

**OFFICE OF
THE PARLIAMENTARY BUDGET OFFICER**



**BUREAU DU
DIRECTEUR PARLEMENTAIRE DU BUDGET**

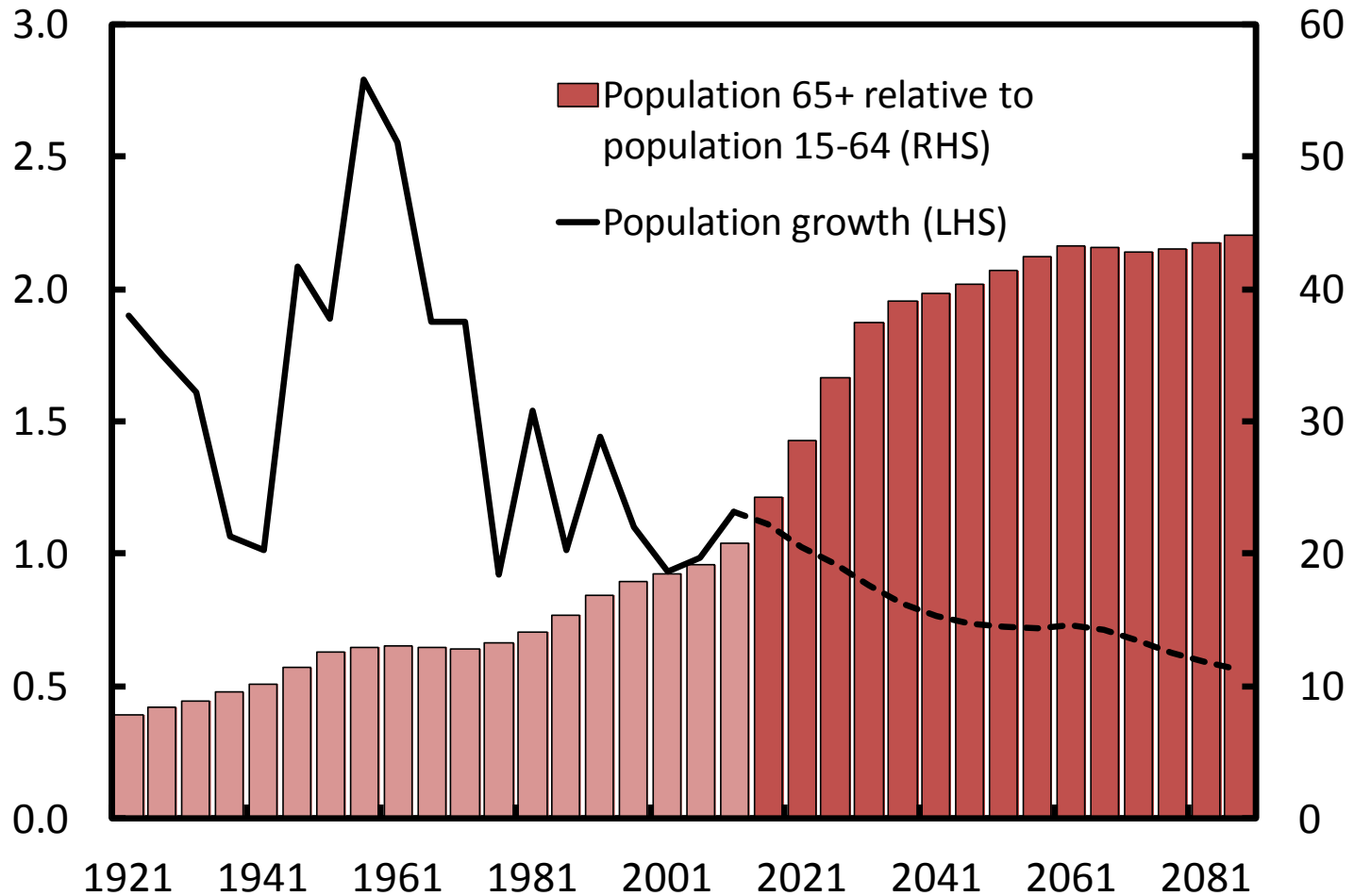
Economic and Fiscal Impacts of population Ageing in Canada

**Presentation to the CEA-CDESG Panel
Calgary
June 9, 2012**

**Mostafa Askari
Assistant Parliamentary Budget Officer,
Economic and Fiscal Analysis**

The Demographic Transition

per cent





Projection of potential output

1. Potential, or trend, GDP is projected from the supply side of the economy using the following identity:

$$Y = L \times \frac{Y}{L}$$

where: Y is real GDP, L is total labour input and (Y/L) is labour productivity

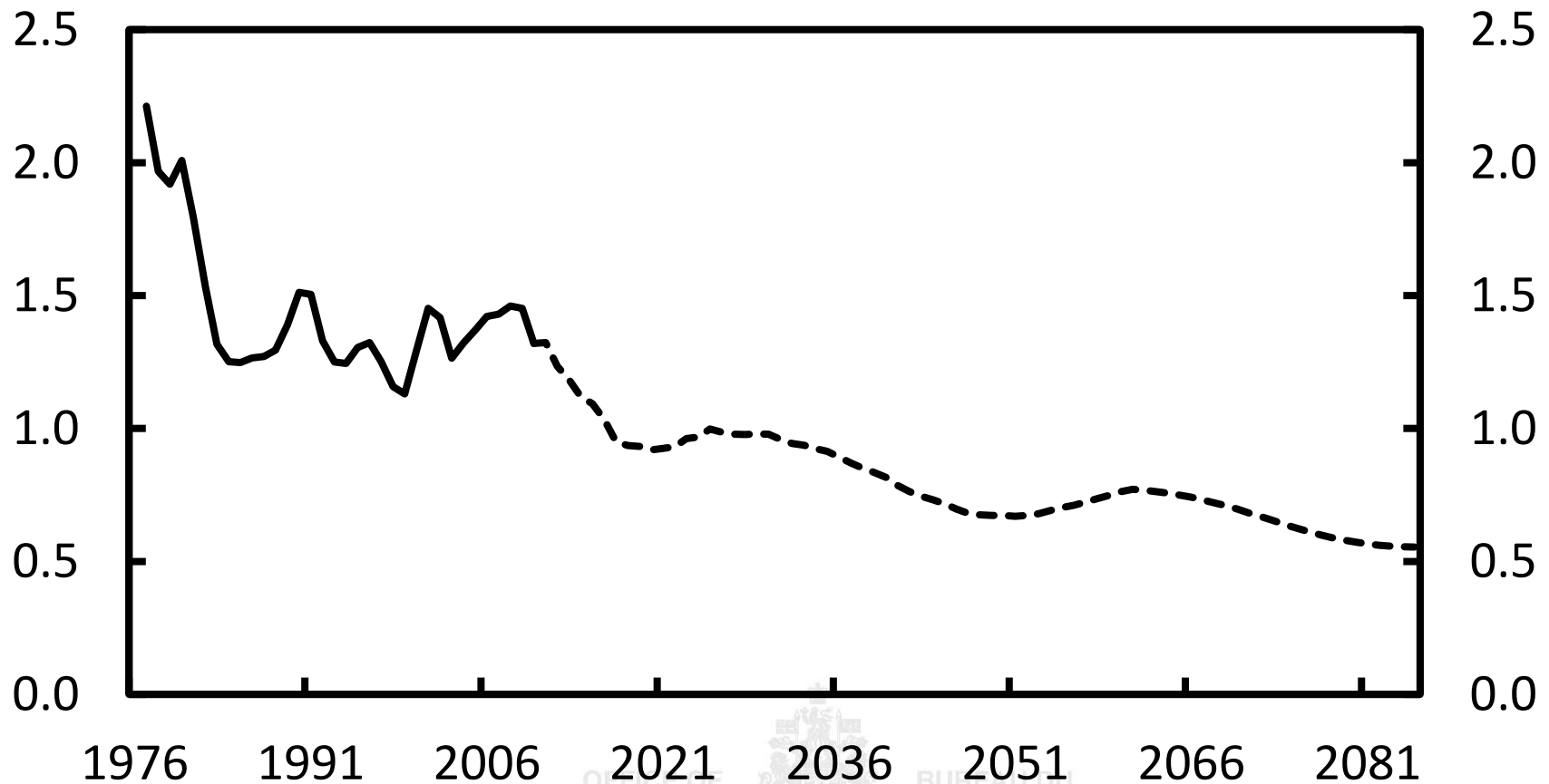
2. Labour input is a function of the size of the working age population (LFPOP), the aggregate employment rate (LFER) and average weekly hours worked by those employed (AHW)

$$L = LFPOP \times LFER \times AHW \times 52$$

3. Labour productivity growth imbeds technological change and capital deepening

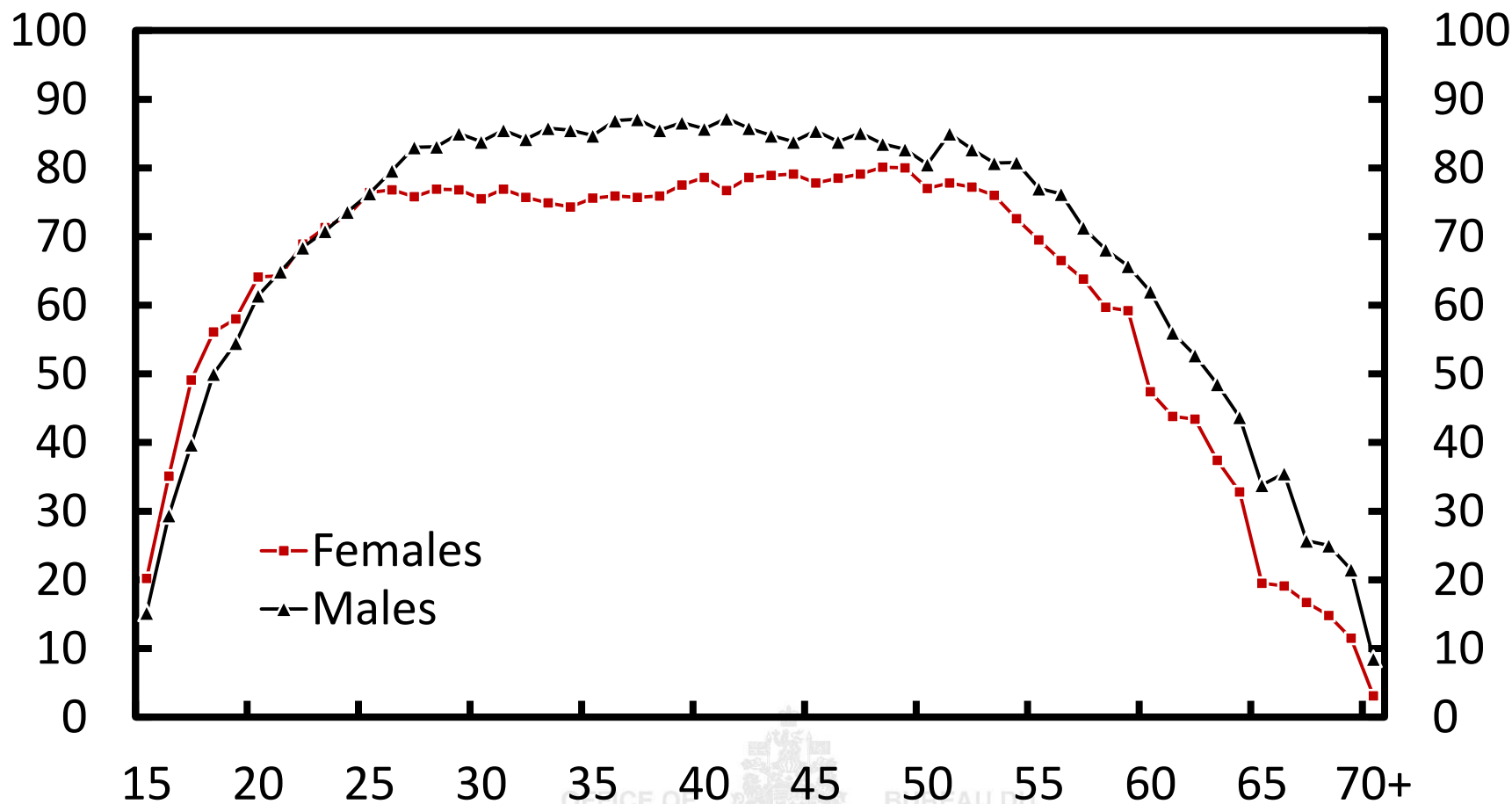
Working Age Population Growth, 1977 to 2085

(Per cent)



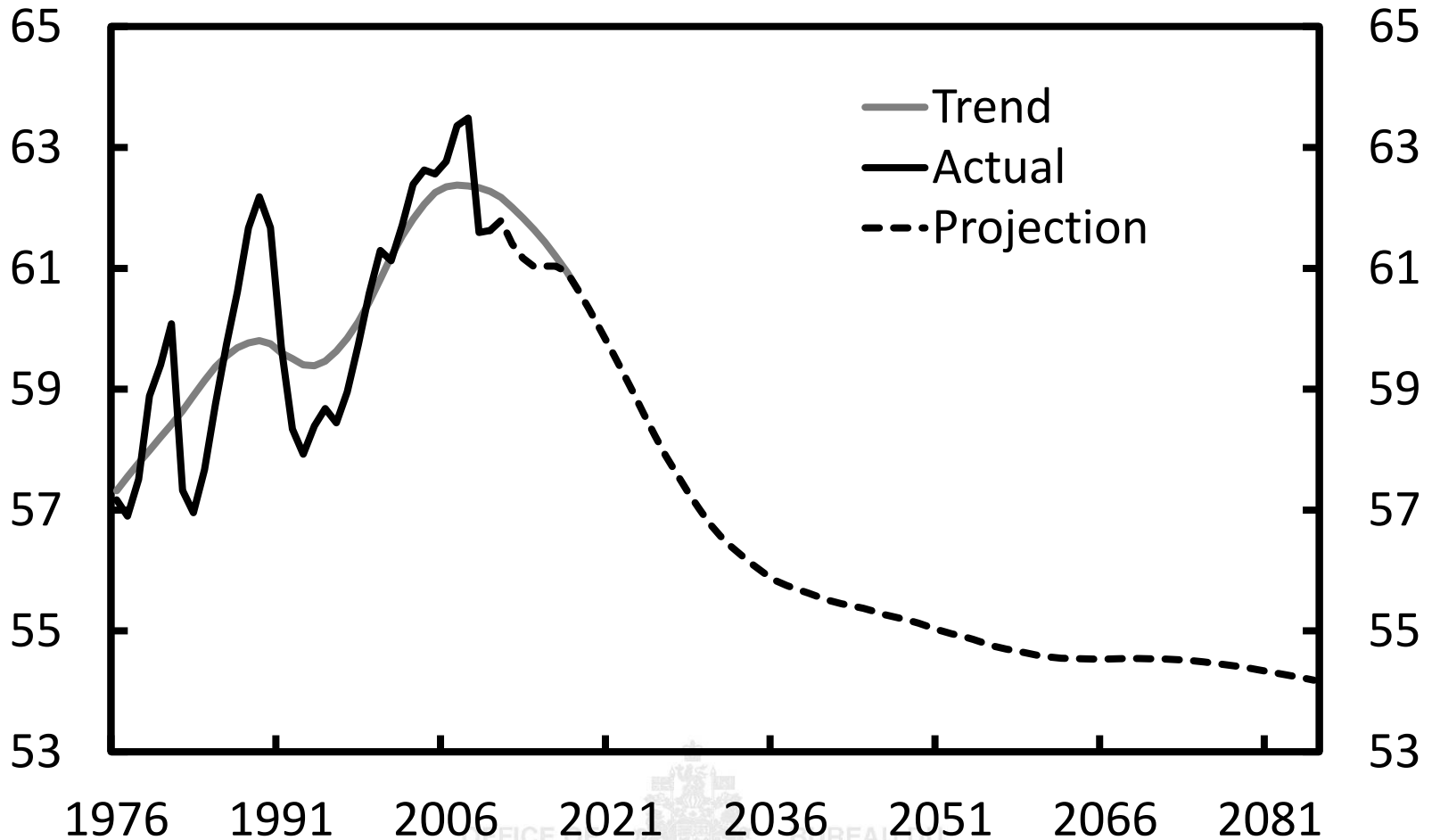
Employment Rate by Age

(Per cent)

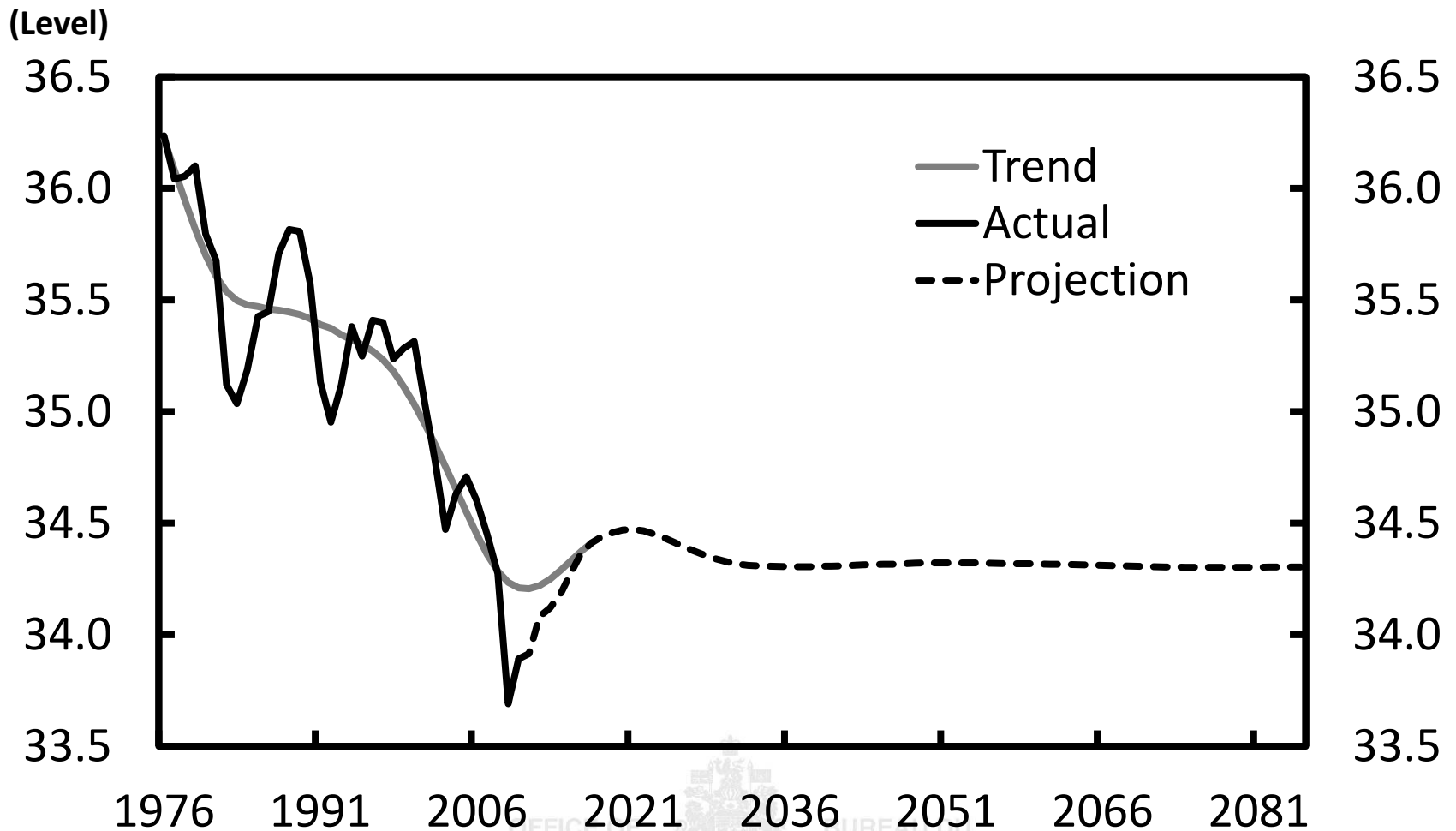


Aggregate Employment Rate, 1976 to 2085

(Per cent)

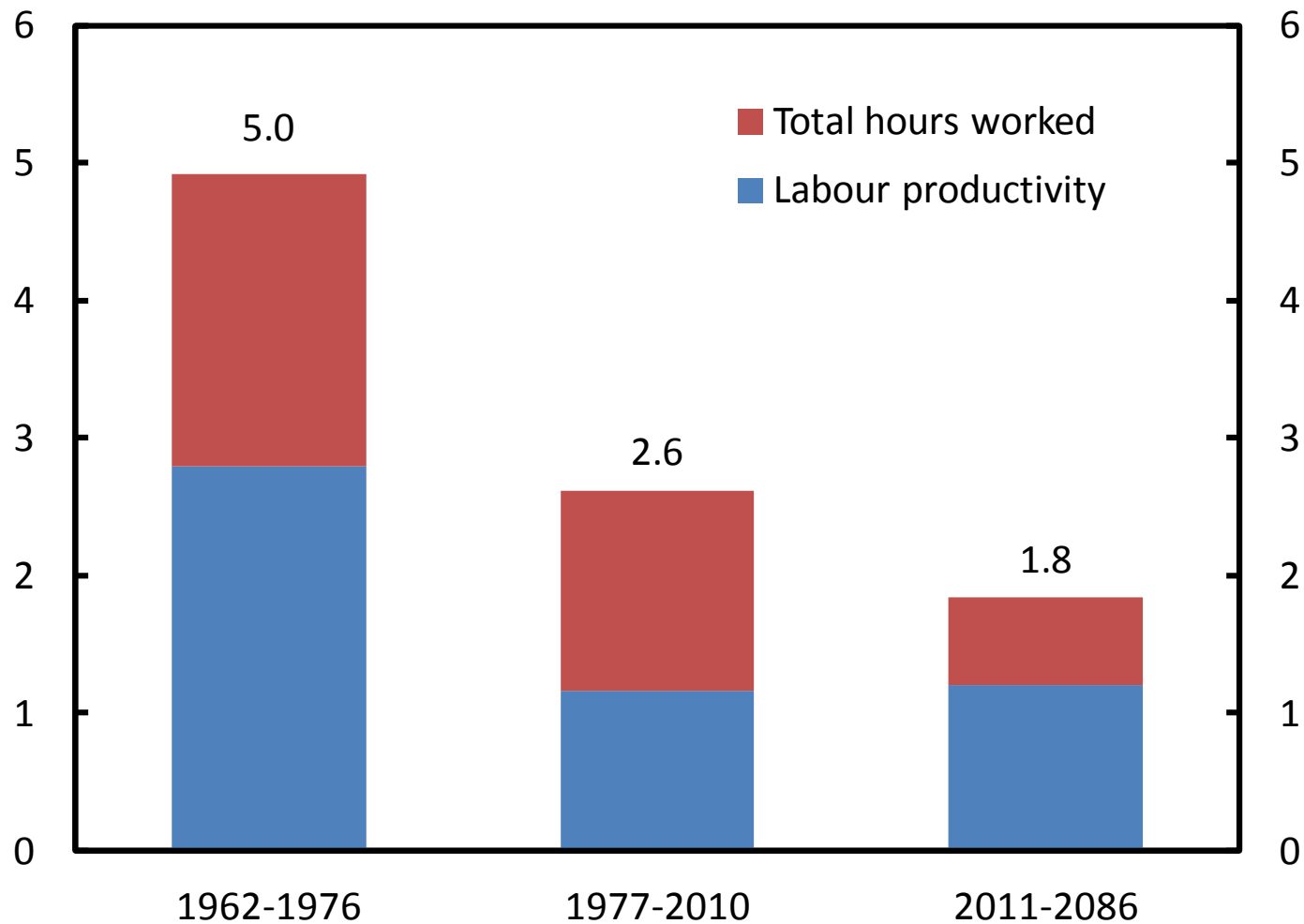


Average Weekly Hours Worked, 1976 to 2085



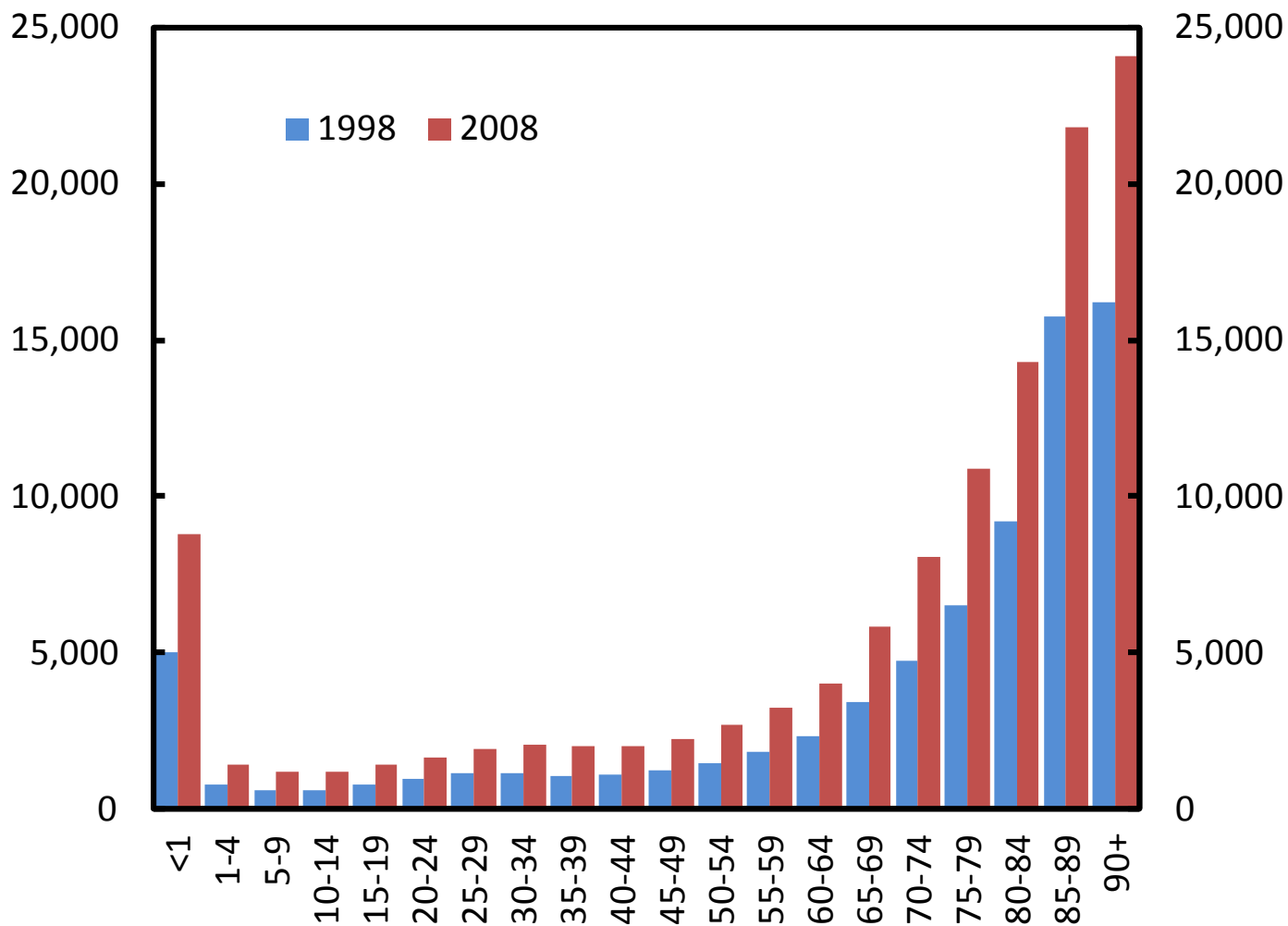
Average Annual Real GDP Growth

(Per cent)



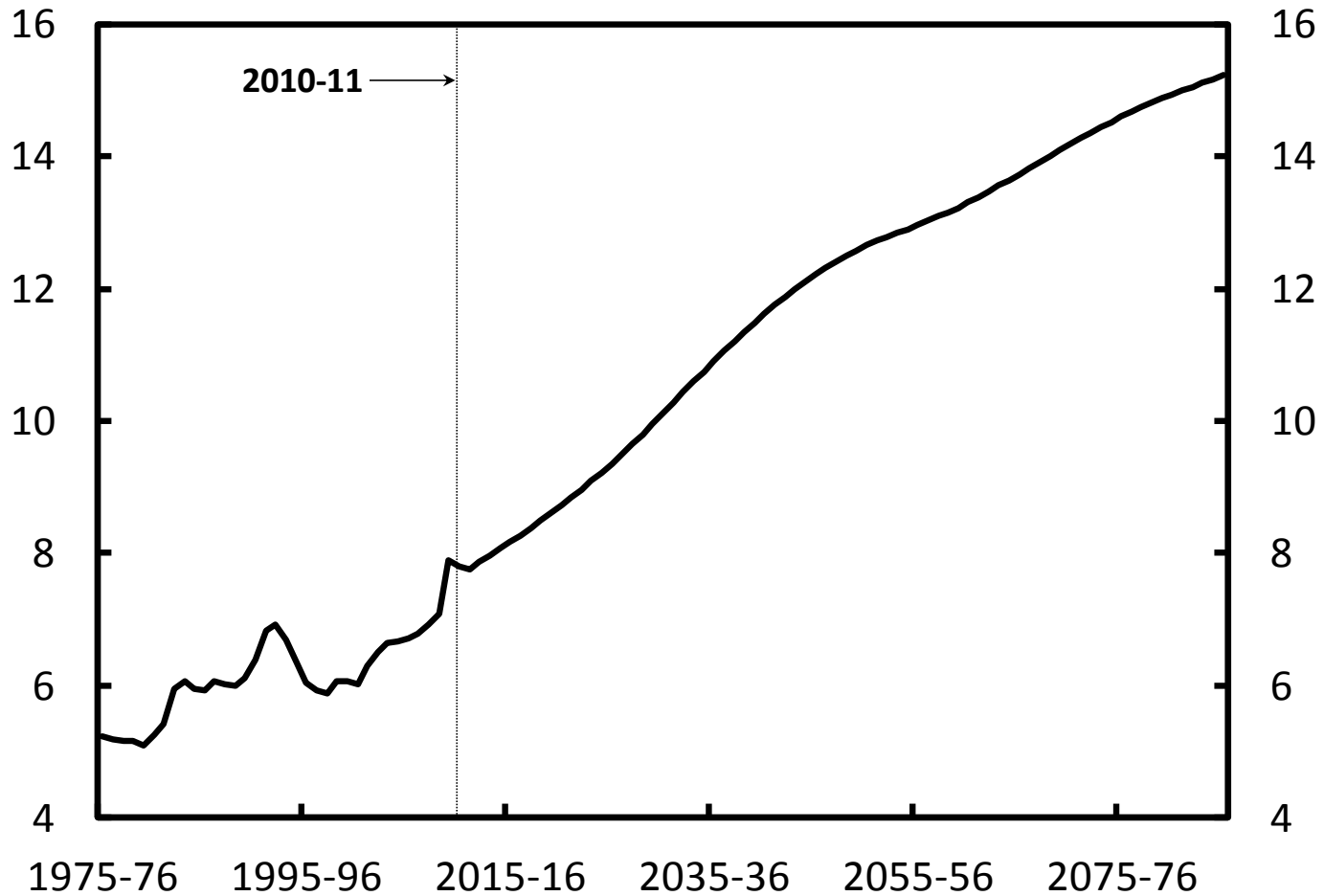
Provincial-Territorial Government Health Expenditures by Age Group, 1998 and 2008

(Dollars per capita)



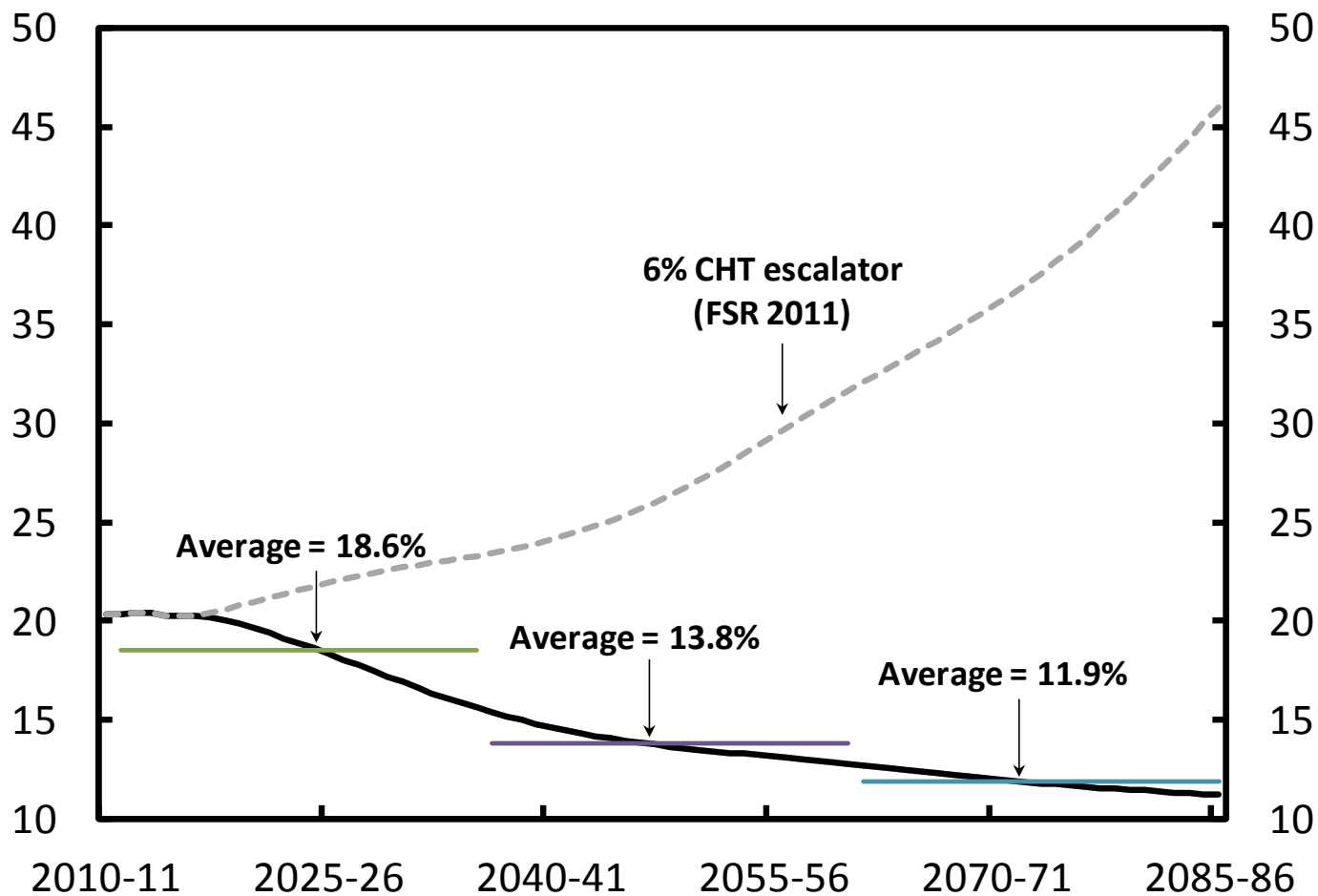
Provincial-Territorial Health Spending

(Per cent of GDP)



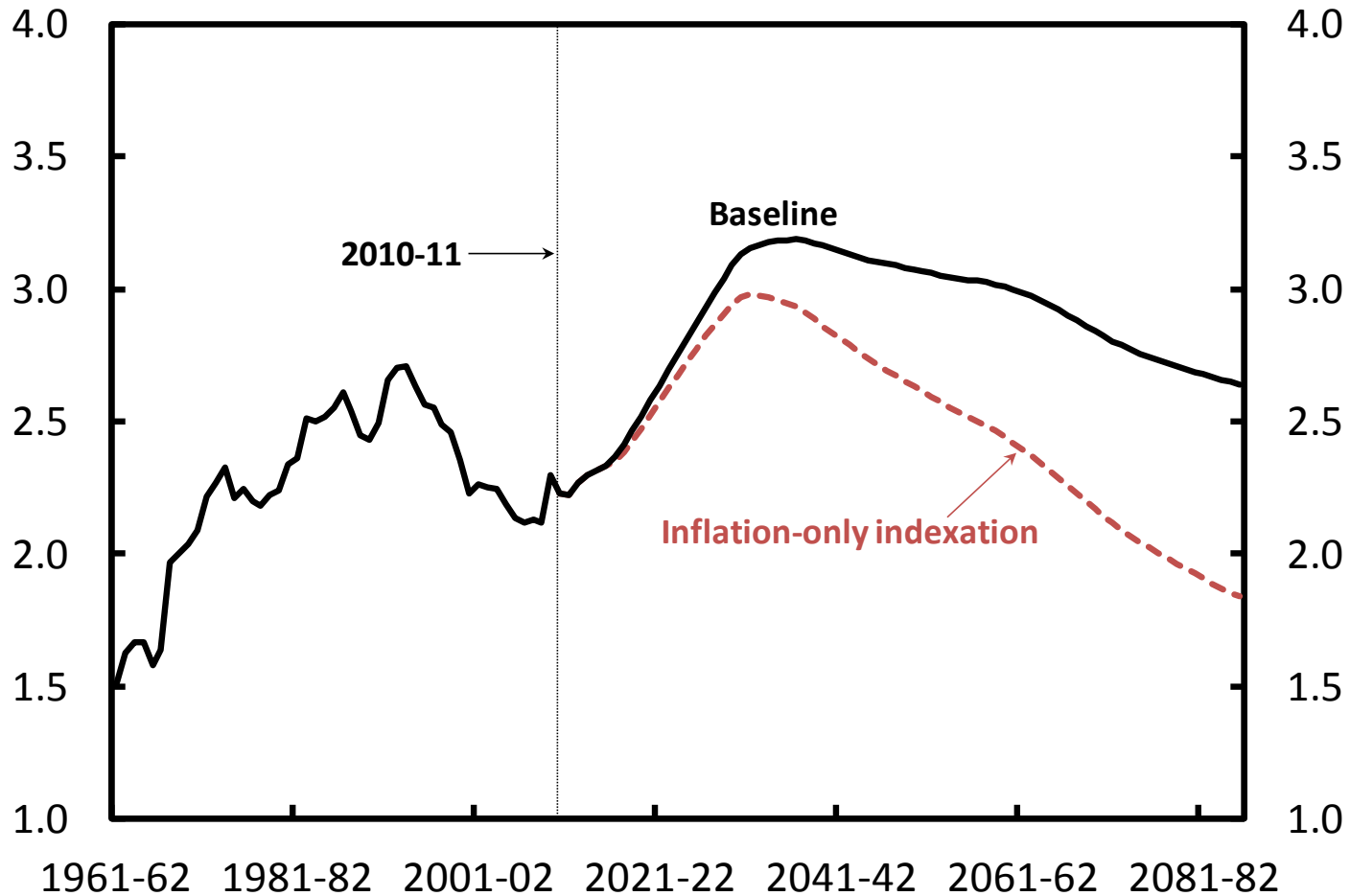
Federal CHT Relative to Provincial-Territorial Health Spending

(Per cent)



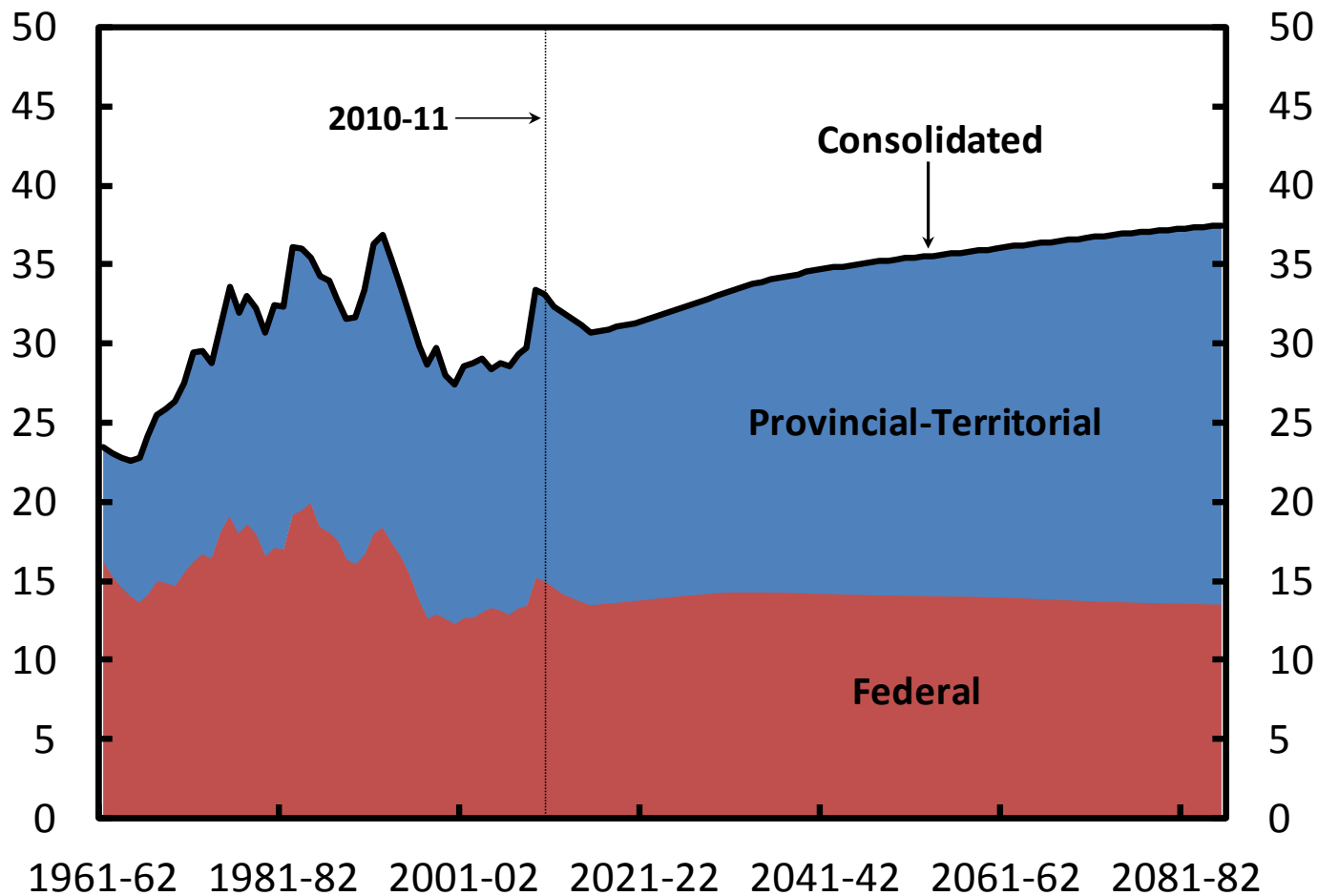
Federal Elderly Benefits

(Per cent of GDP)

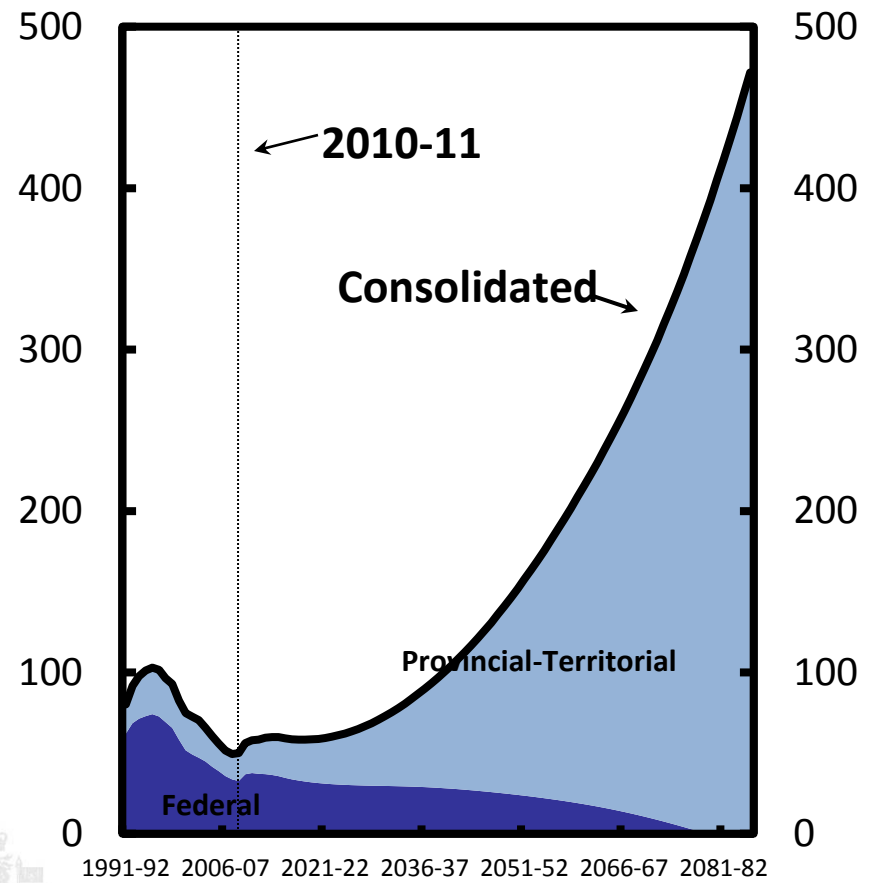
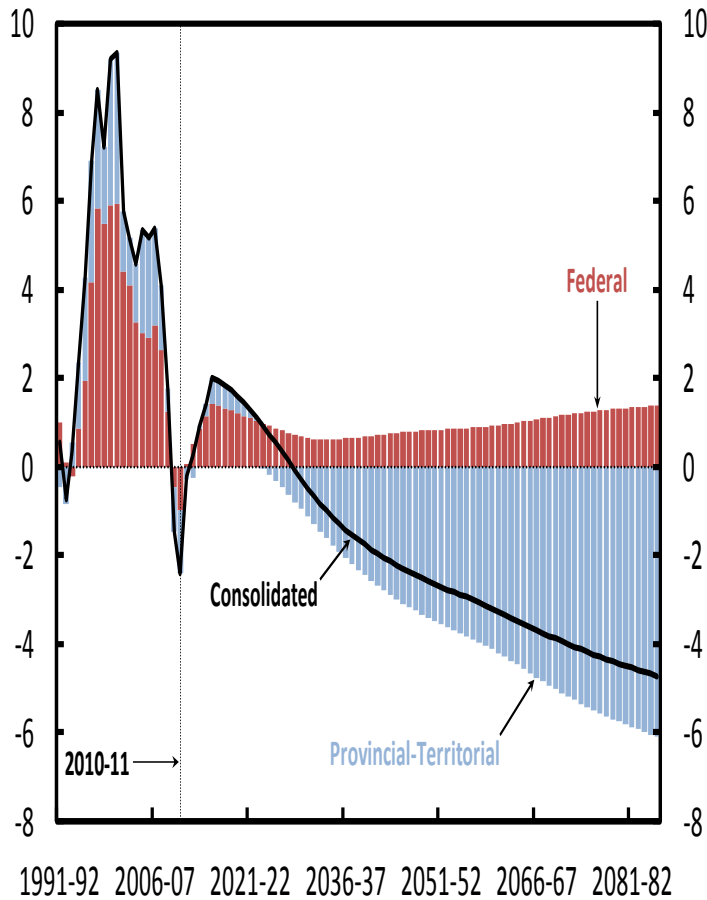


Consolidated Federal and Provincial-Territorial Program Spending

(Per cent of GDP)



Projection of long-term operating balance and debt-to-GDP ratio





Fiscal Gap Estimates

(Per cent GDP)

