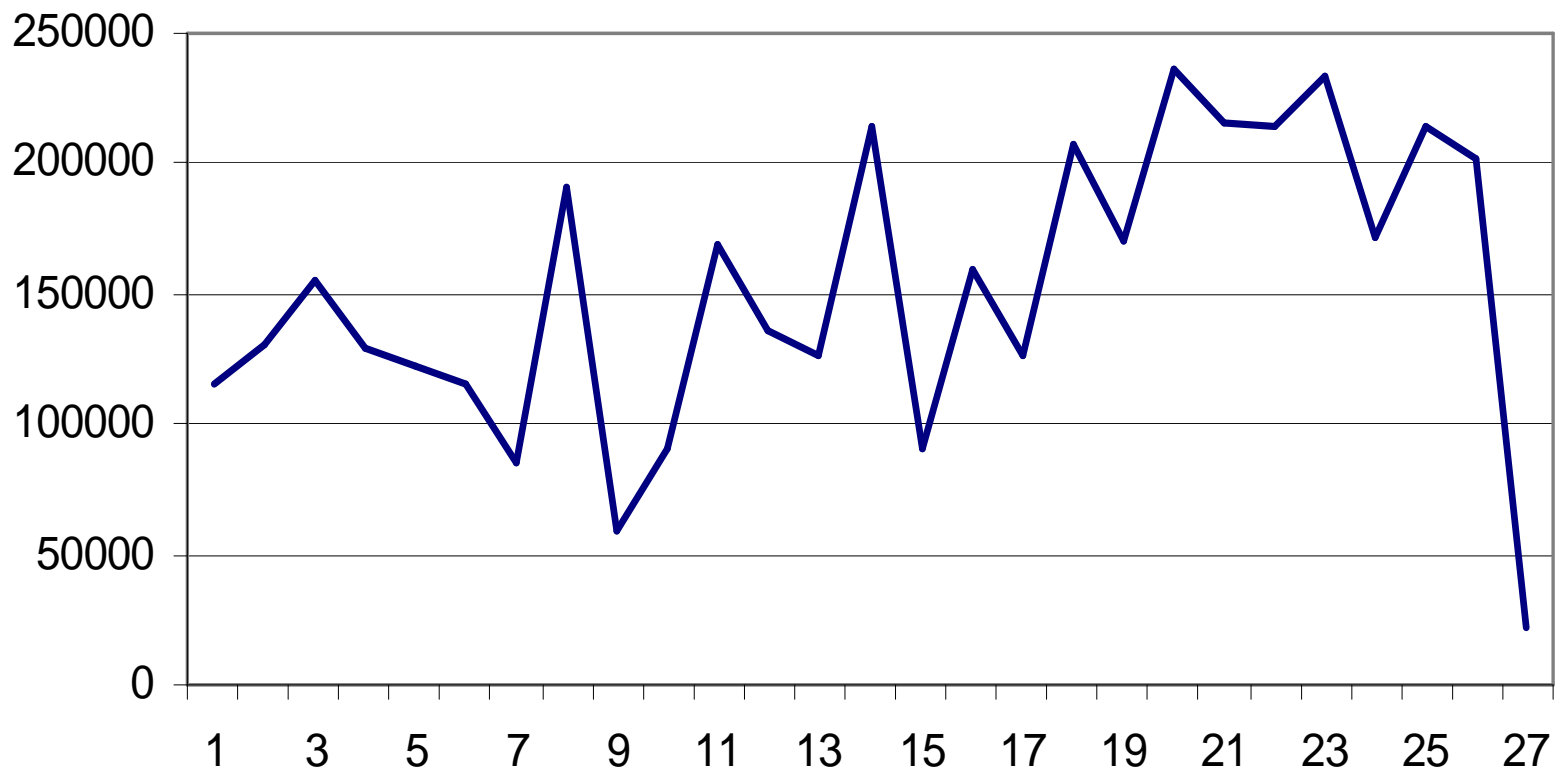
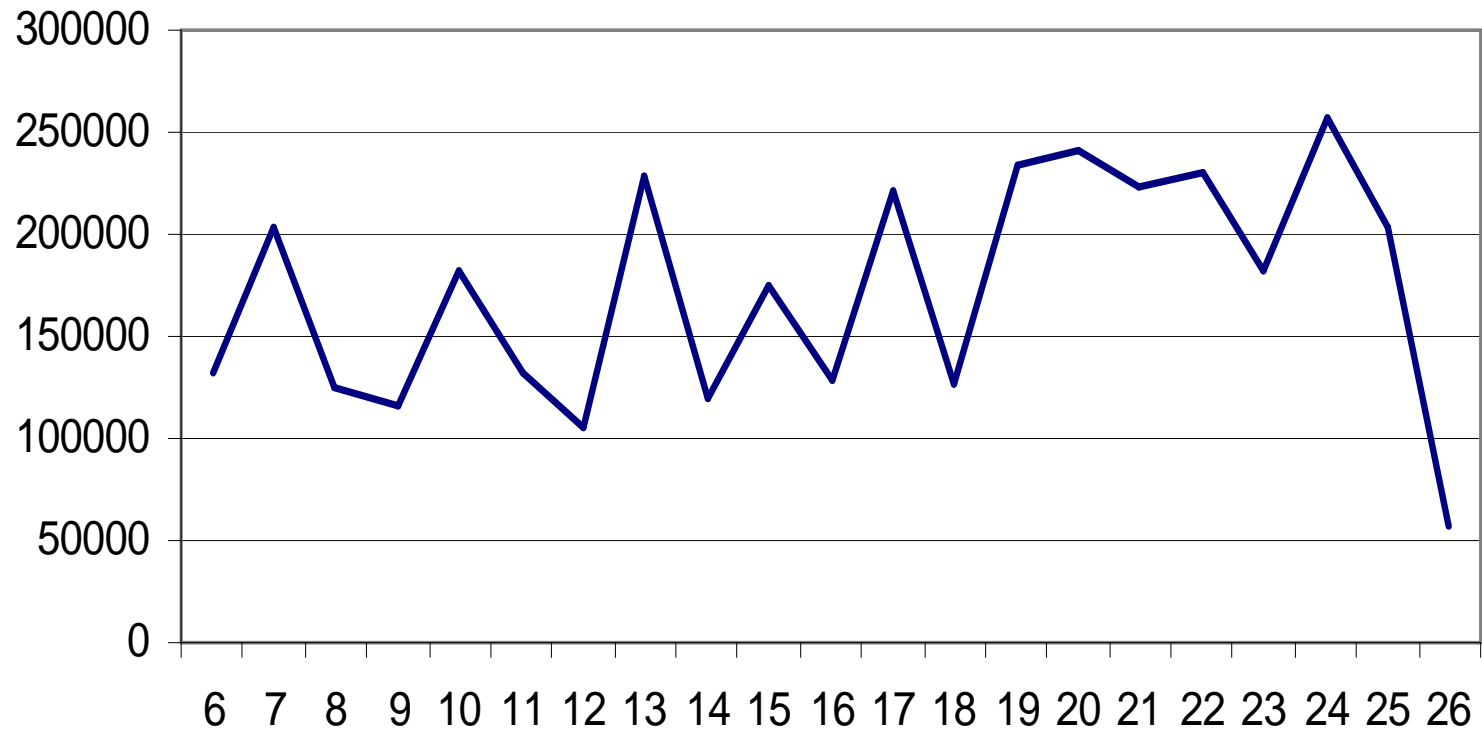


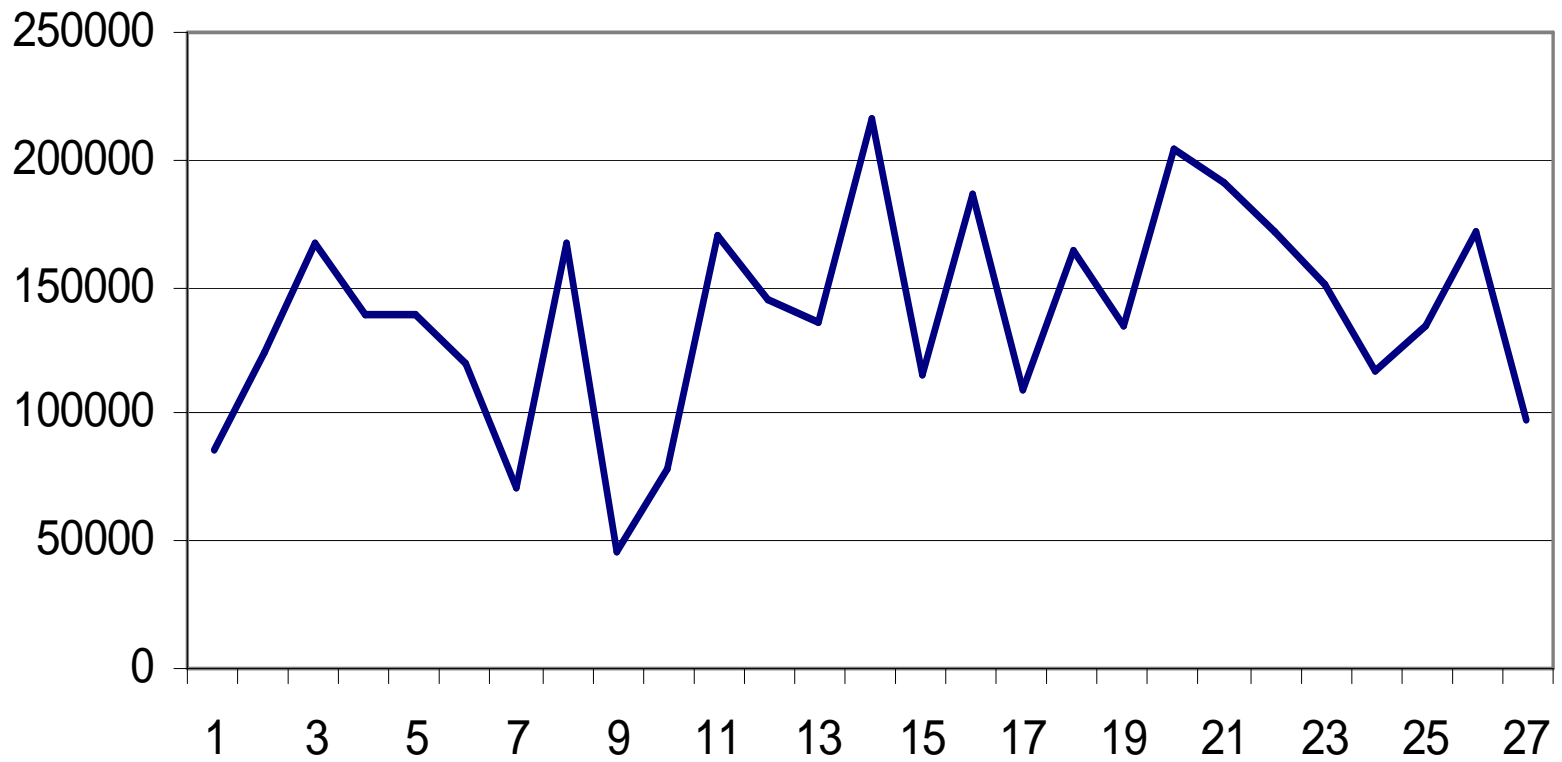
Education cons (with extra cons), Spain, 2000



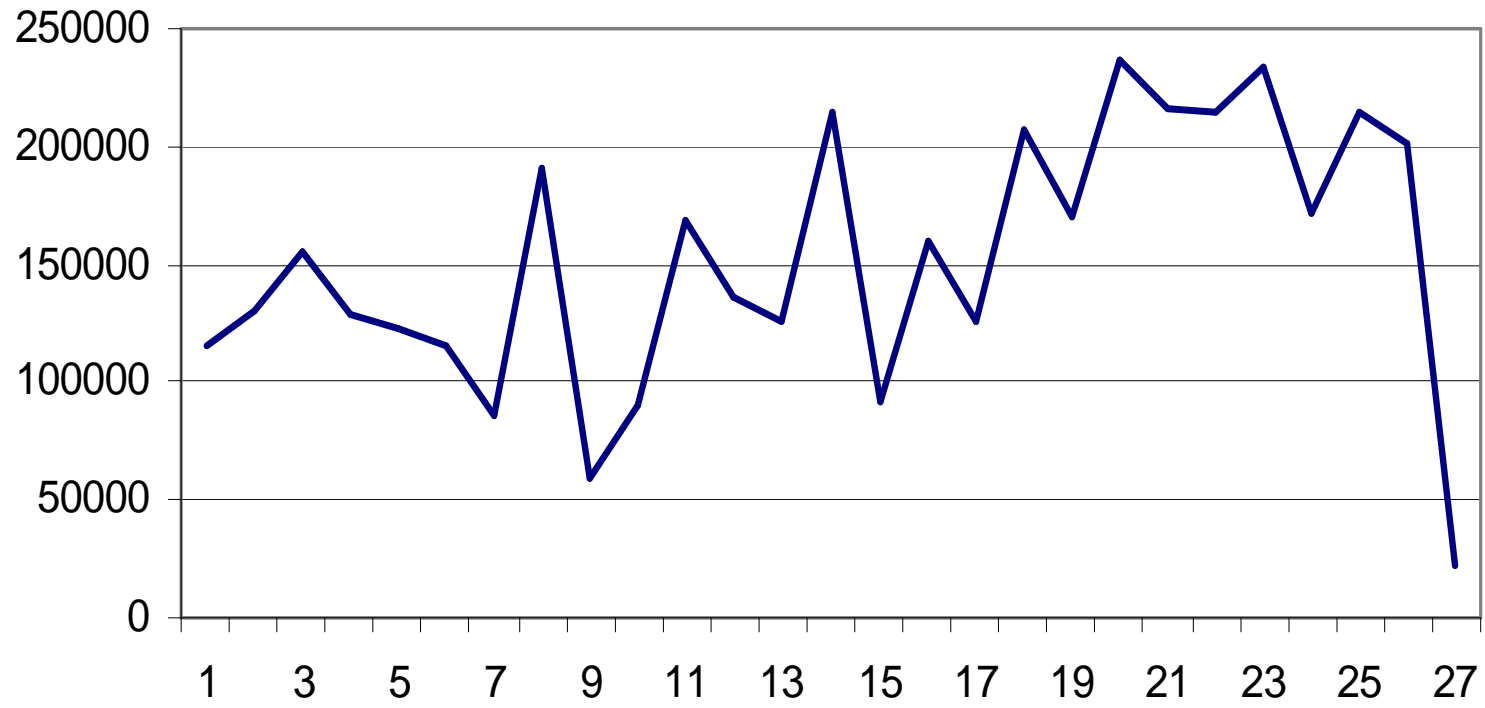
**Education cons (with extra cons), between 6 and 26, Spain, 2000**



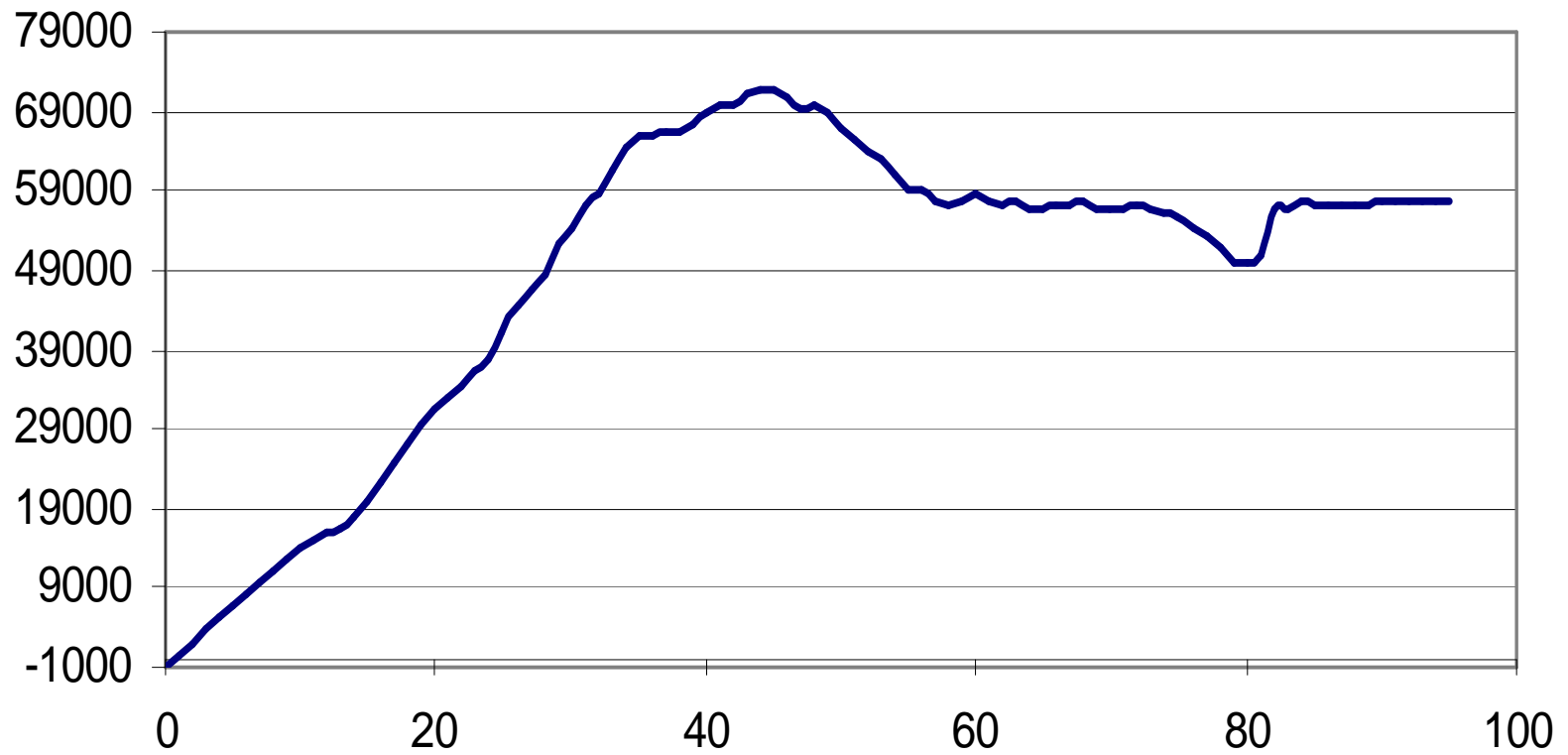
Education cons, regress for all the people, Spain, 2000



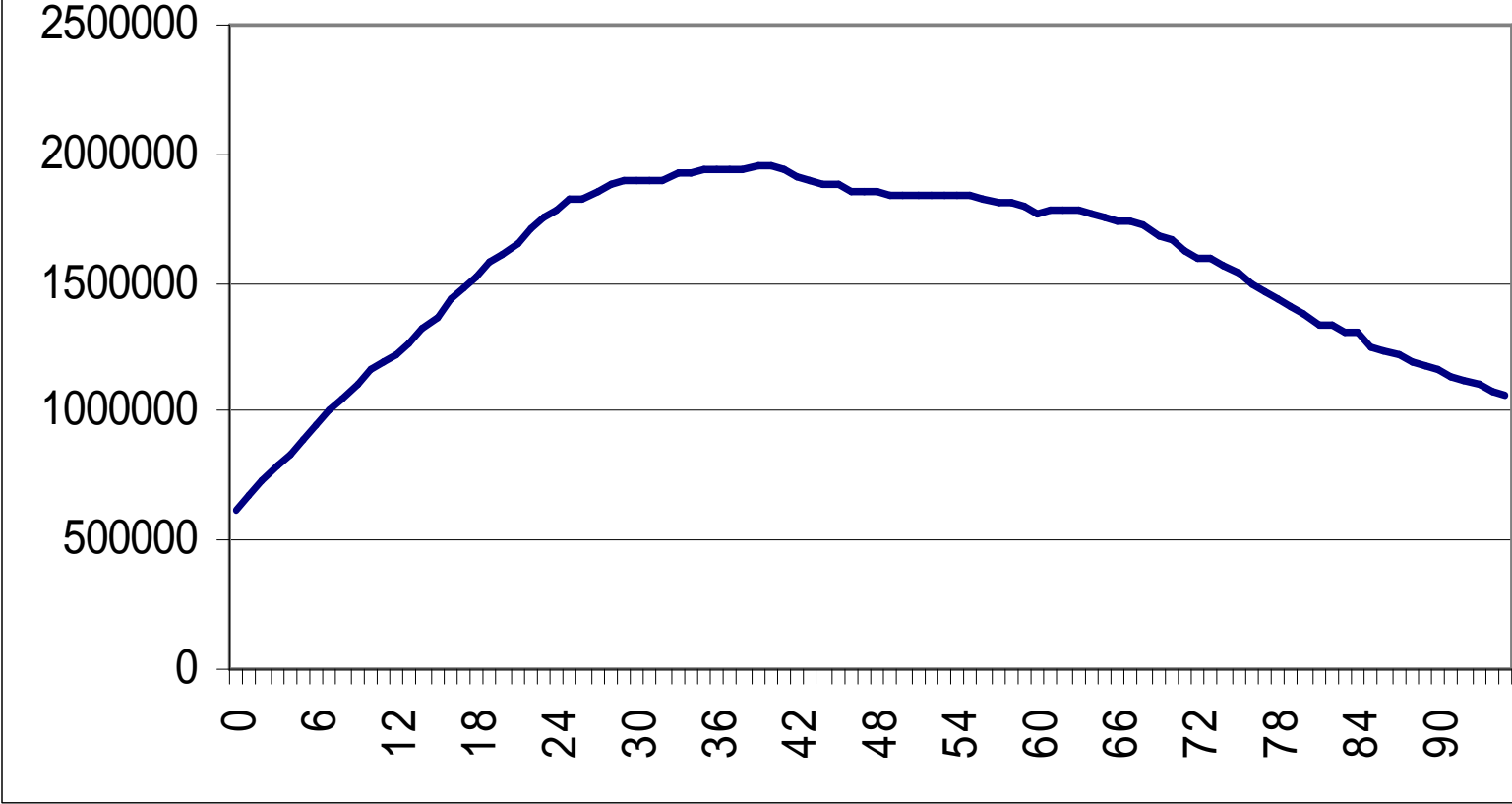
Education cons only for hh consuming educ, Spain, 2000



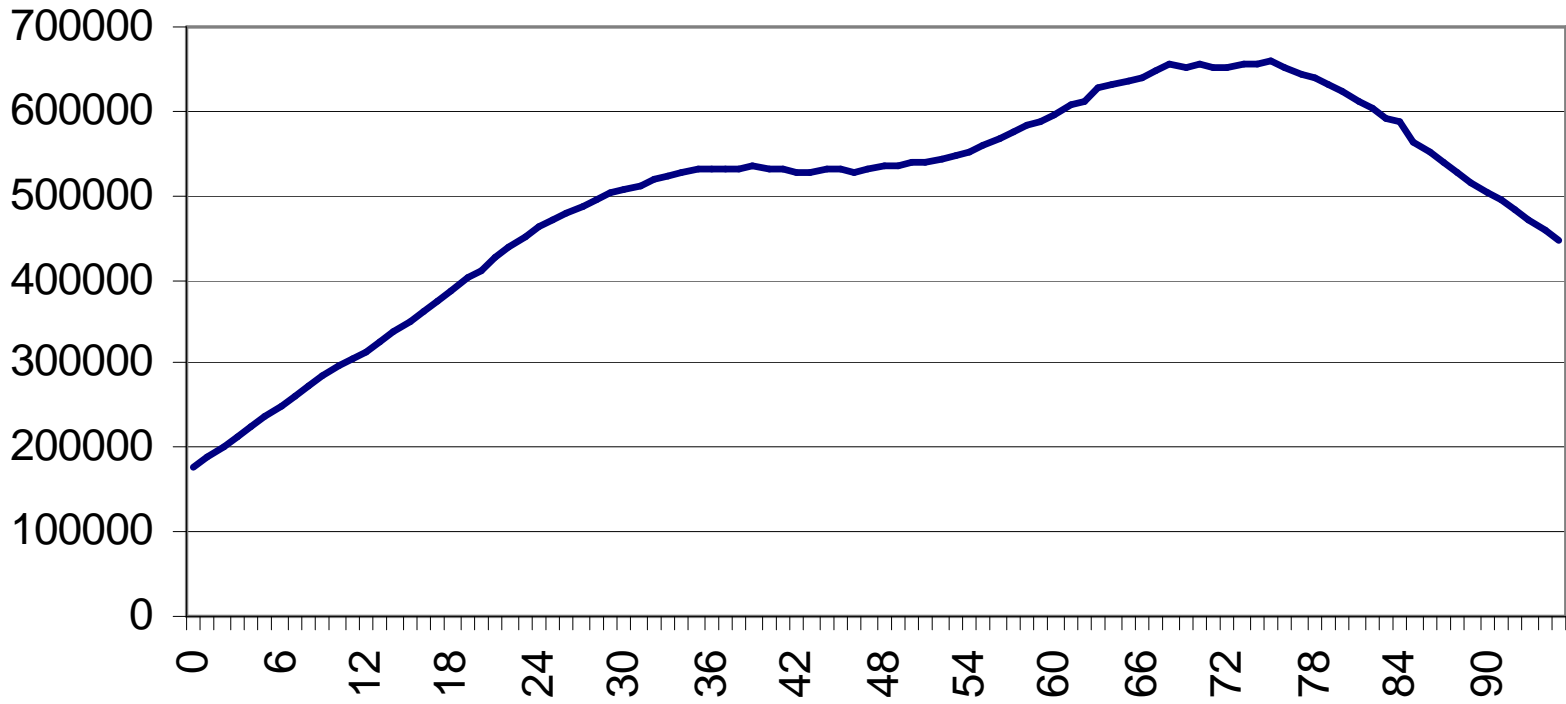
## Private health consumption, Spain, 2000



Other consumption (without housing), Spain, 2000



Housing, Spain, 2000



### Private consumption, Spain, 2000

