



3rd · 8th
June 2013

NATIONAL TRANSFER ACCOUNTS

Barcelona 2013

Faculty of Economics and Business, UB

www.ntaaccounts.org

Analyzing time transfers for Spain

Rosario Ivano Scandurra and Elisenda Rentería Pérez
Universitat de Barcelona

Ninth Meeting of the Working Group on Macroeconomic Aspects
of Intergenerational Transfers, Barcelona, June 2013

Structure of the talk

- ▶ Aim of the study
- ▶ Spain: a Southern European Model
- ▶ Data
- ▶ Methods
- ▶ Preliminary results
- ▶ Discussion



Aim of studying time use

- ▶ Hidden dimension in National Accounts (Simon Kuznets)
- ▶ Lack of visibility of women contribution in national economy
- ▶ Key importance in the configuration of welfare model



Spain

- ▶ Southern European Welfare Regime (Ferrera, 1996)
Low participation of women in the labor market, low levels of spending on families, weak social service provision.

- ▶ “Familism”



Some data

- ▶ Female labor force participation rate: 58,3% in 2008, 55,8% 2010, 54% 2012
- ▶ Part time employment (% of persons in employment)
women 23-24% between 2008-2012
men 4 and 6% between 2008-2012
- ▶ Age at the first son: 31,1 years, INE



DATA

- ▶ Data: TUS, 2009-2010, National Bureau of Statistics, INE, (Encuesta de empleo del tiempo)
- ▶ Population estimates: National Bureau of Statistics, INE
- ▶ Wage structure Survey, WSS: 2010, National Statistics Bureau, INE



DATA

- ▶ TUS 2010,
Sample | 1.538 dwelling
- ▶ WSS, 2010
Sample: | 60 thousand employees

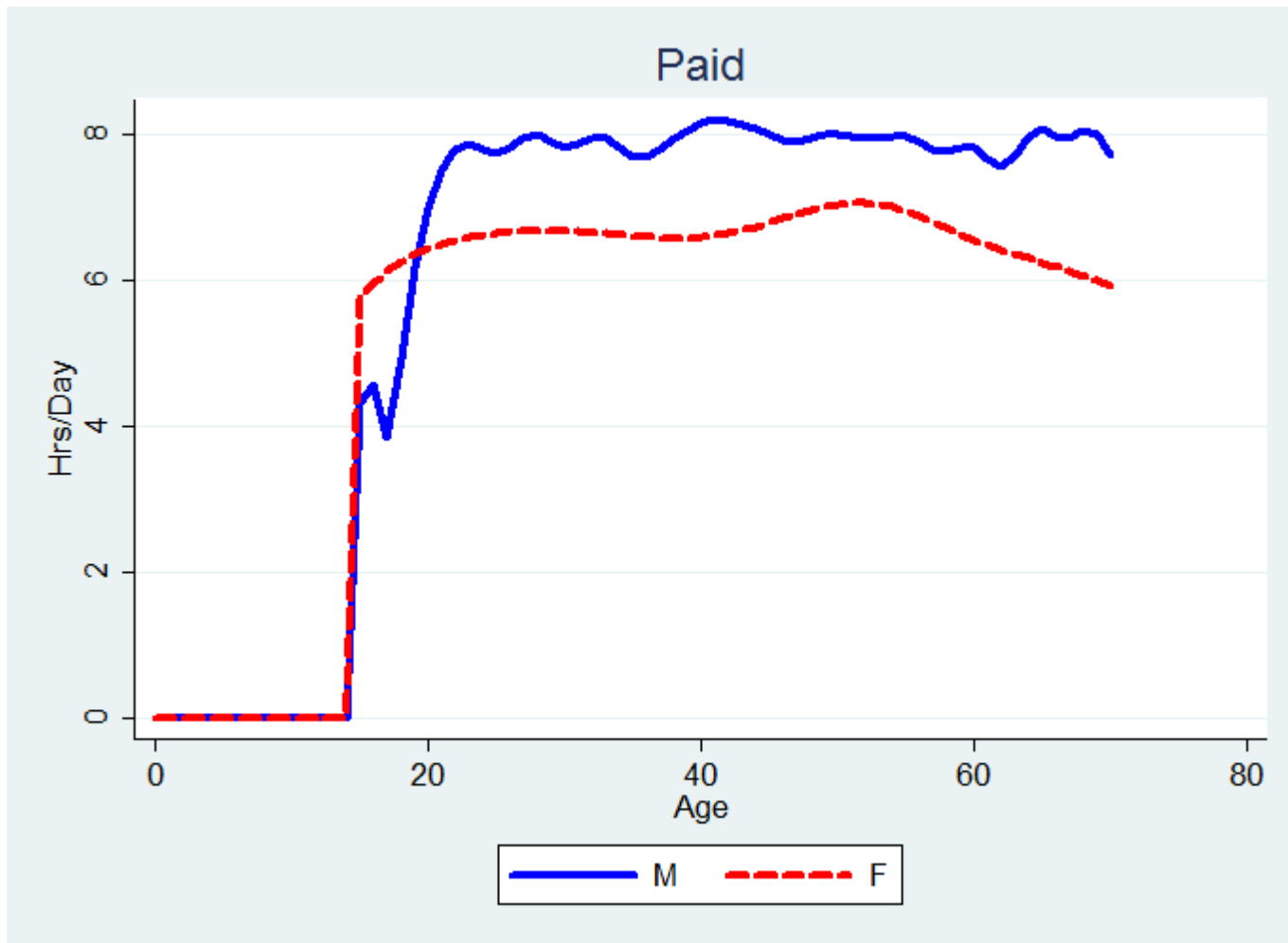


METHODS

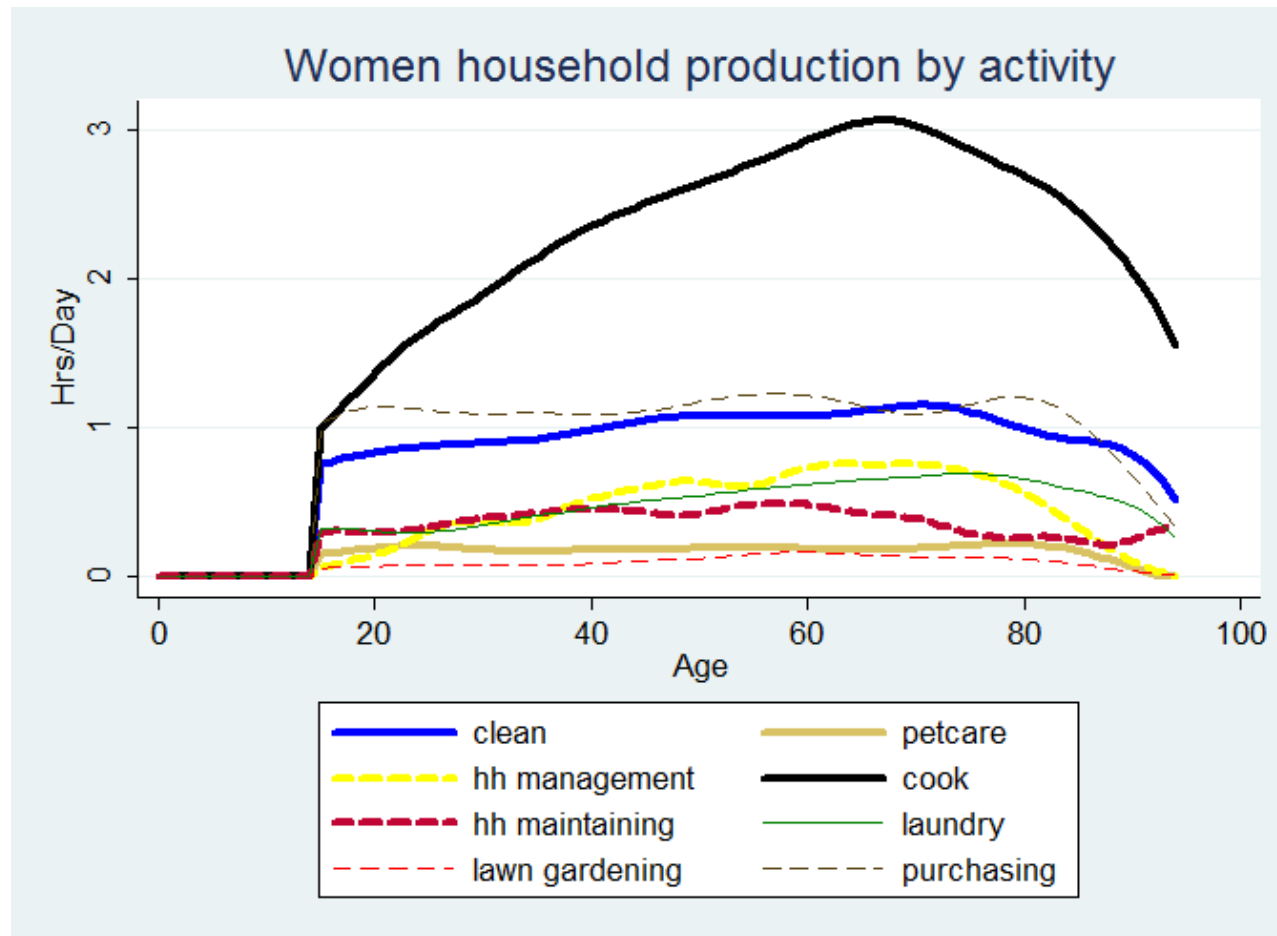
- ▶ Identification of household production
- ▶ Estimate sex specific age profiles of time production and consumption
- ▶ Value non monetary production by assigning a monetary value



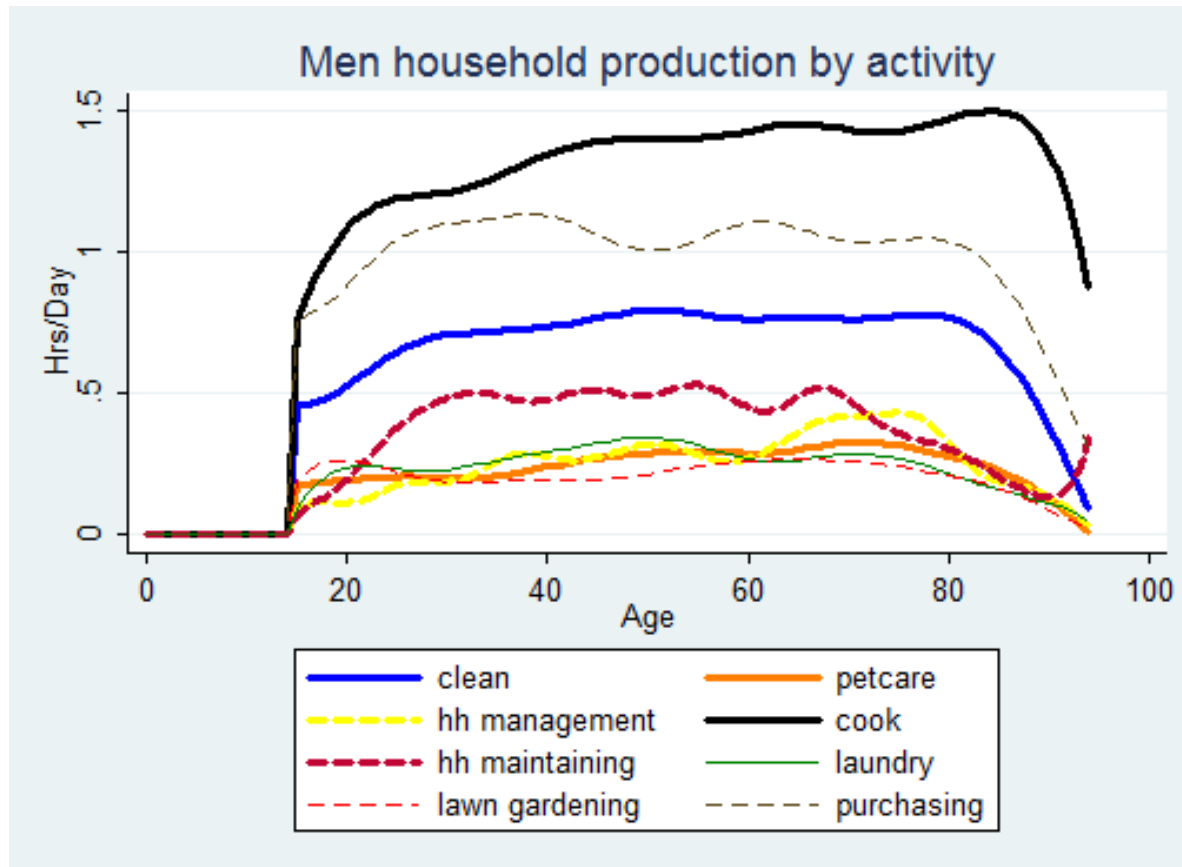
Working hours by gender



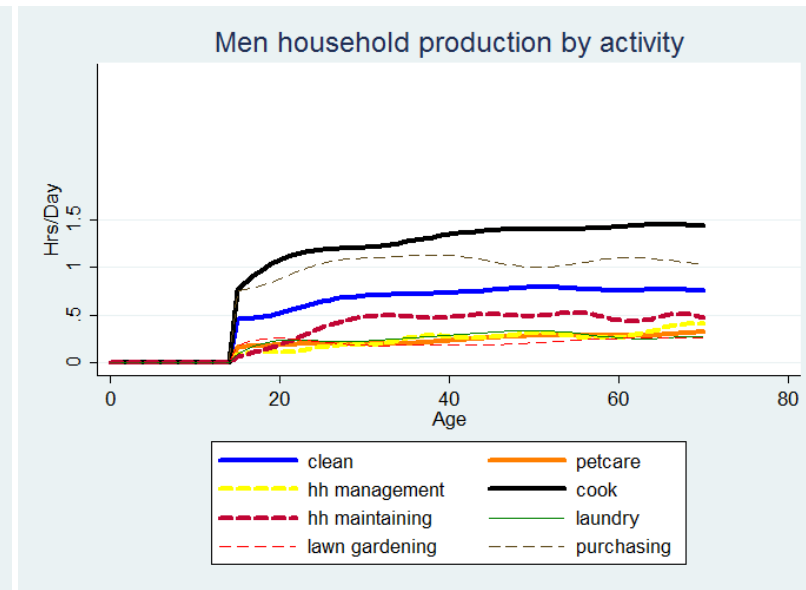
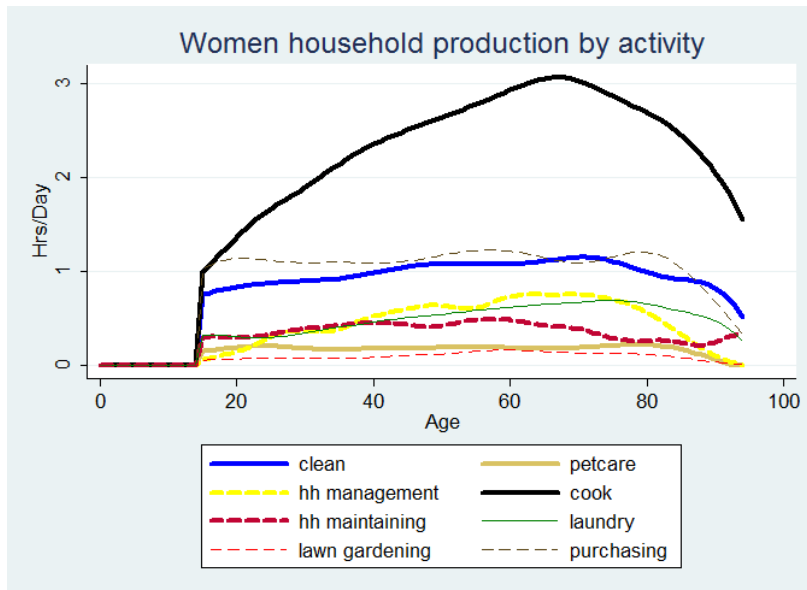
Time use estimates for women, Spain, 2010



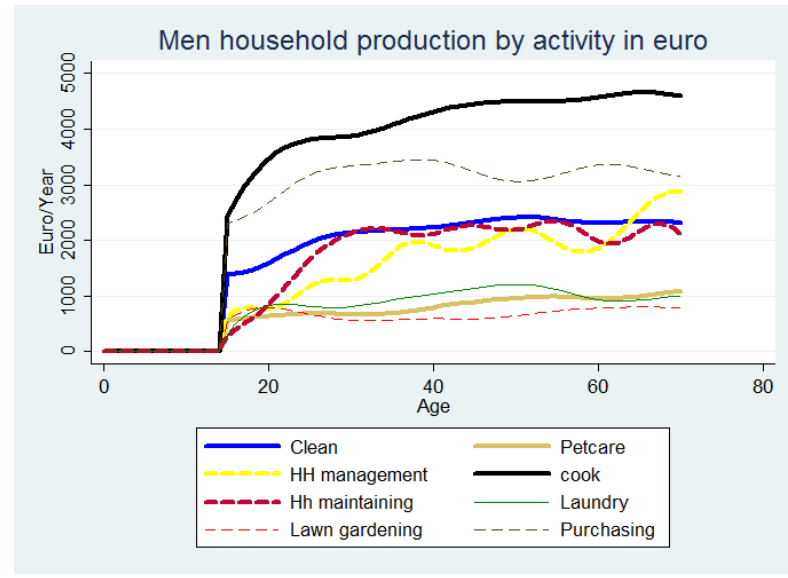
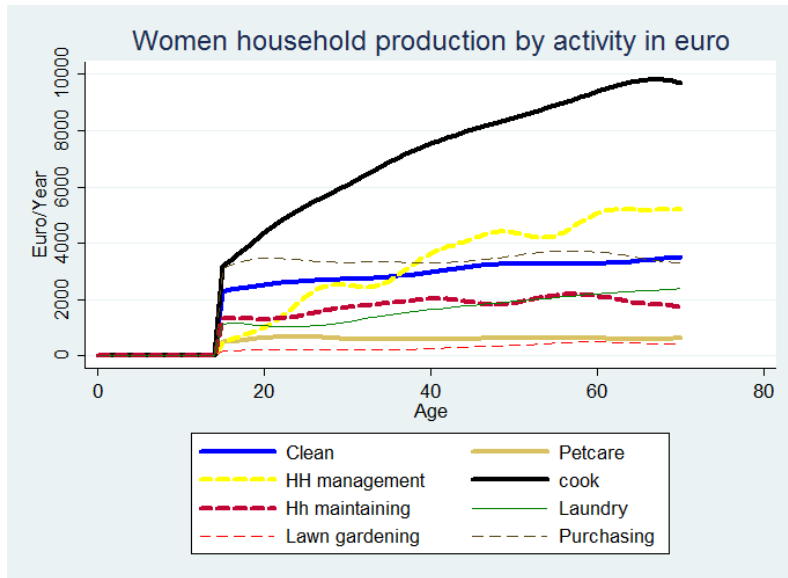
Time use estimates for men, Spain, 2010



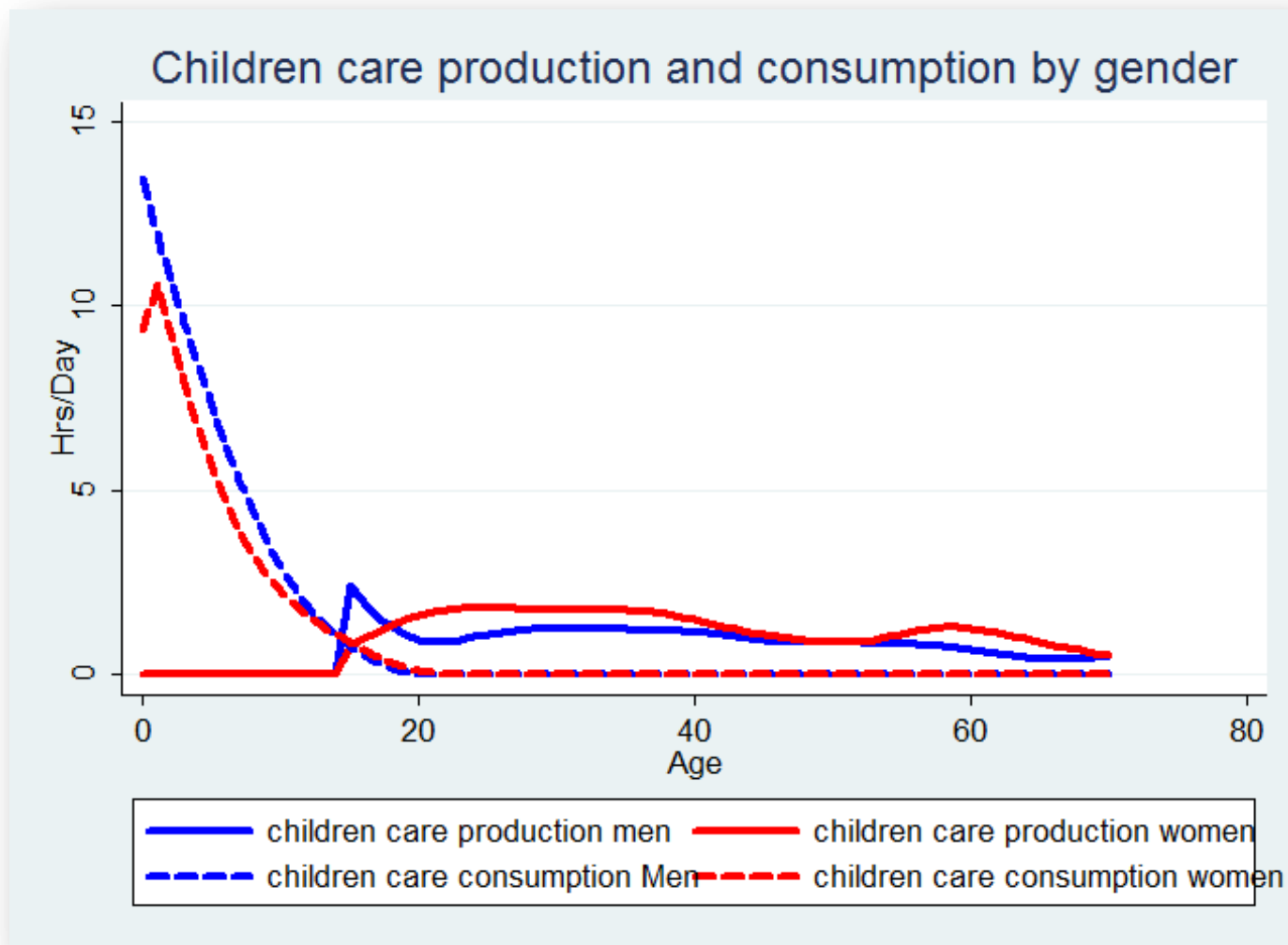
Women and men household production



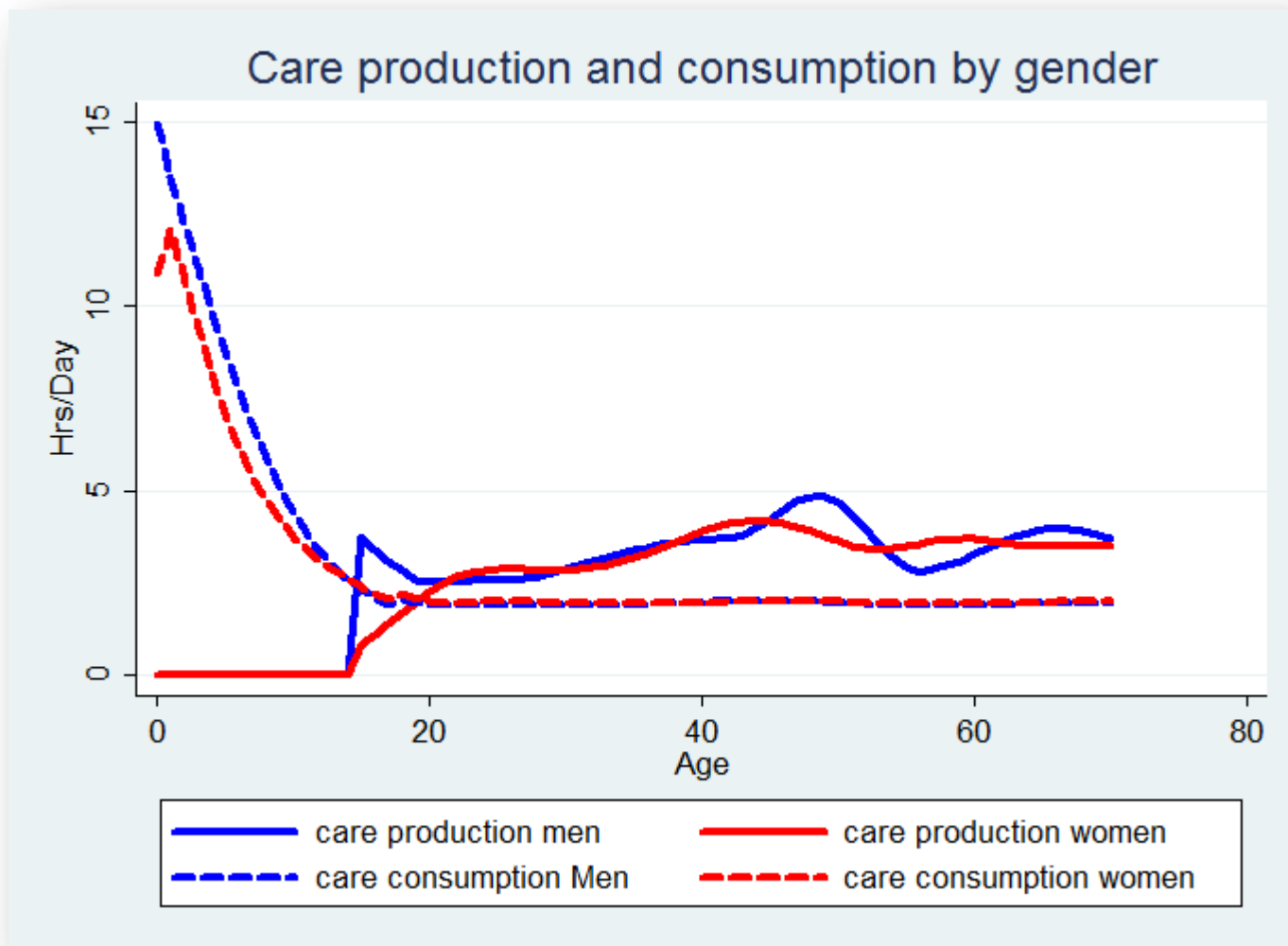
Women and men household production in euro



Care

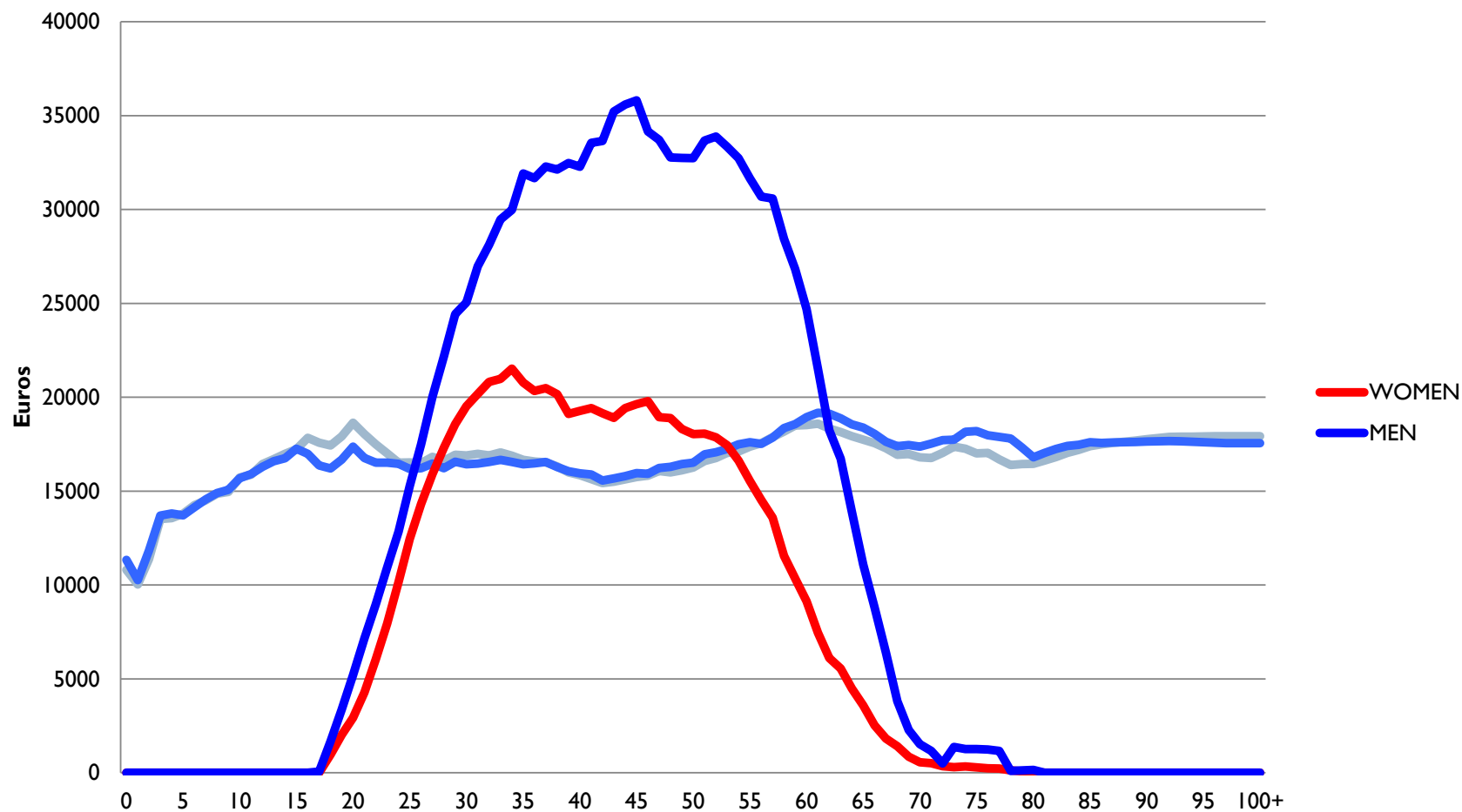


Care



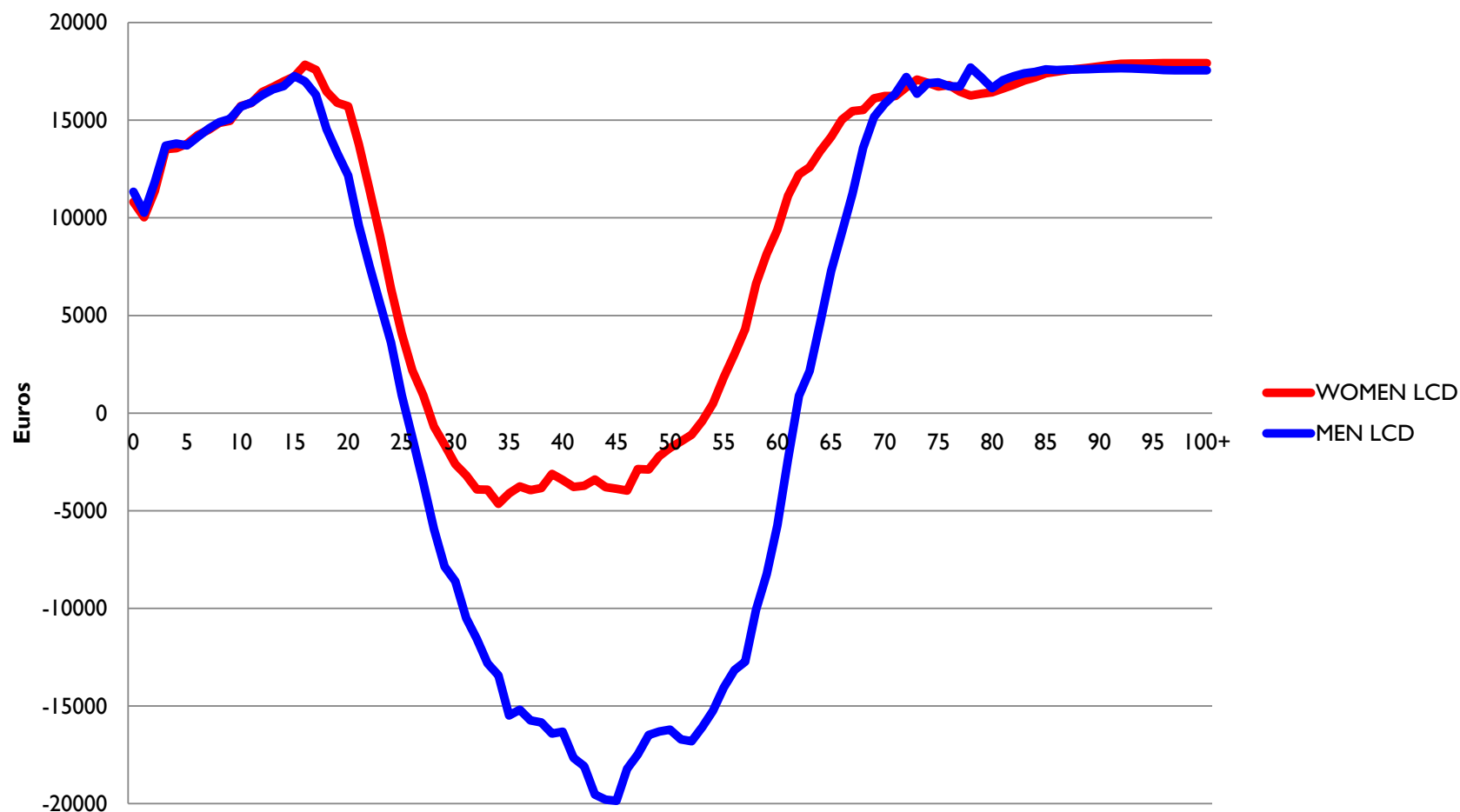
The lifecycle deficit by gender, Spain, 2008

LY and Consumption per capita by sex, Spain 2008

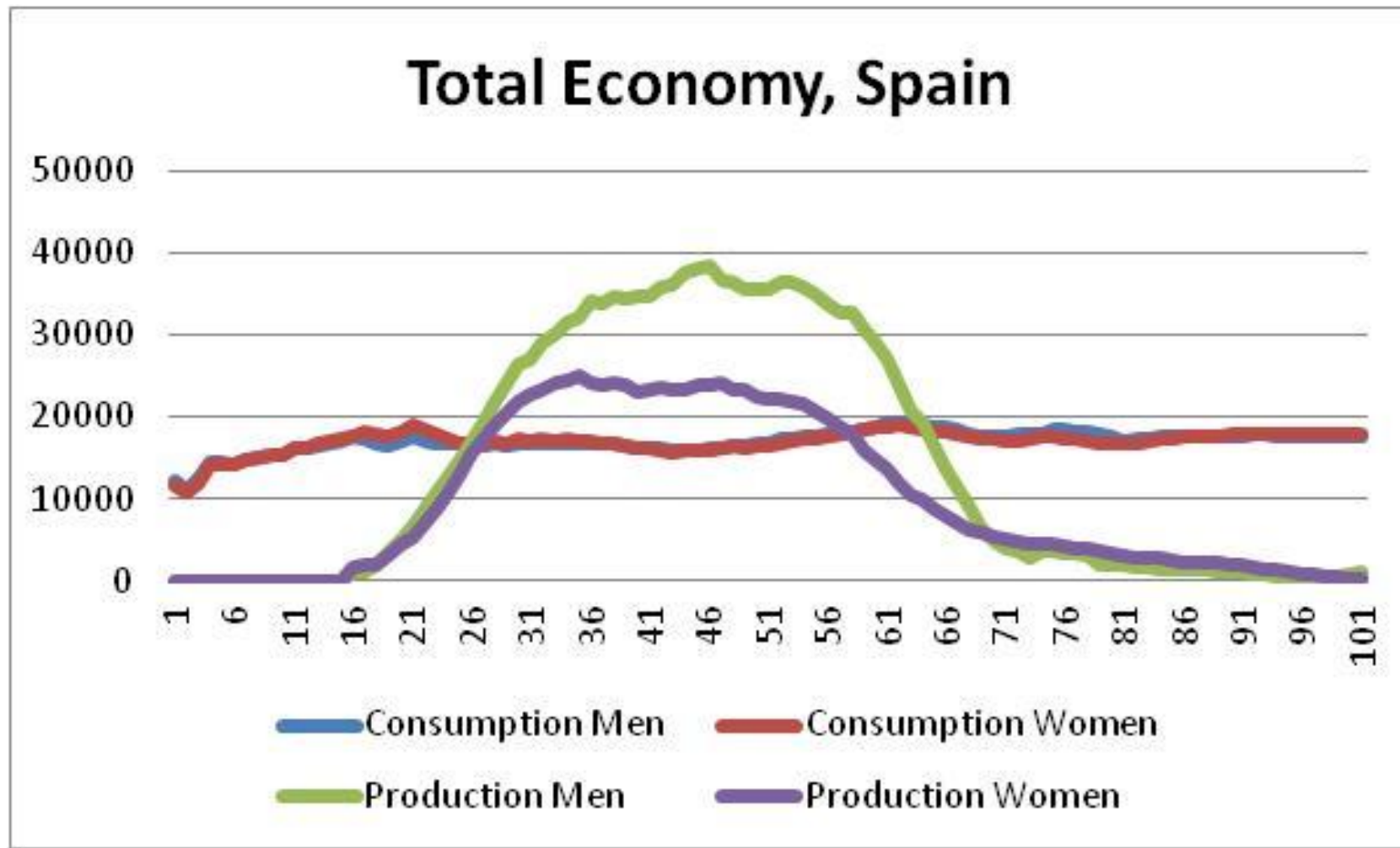


Macroeconomic flows of time and money

Lifecycle Deficit by sex, Spain 2008



NTTA, Spain 2008



Discussion

- ▶ Value of time
- ▶ Public policy implications: Stiglitz commission



Thanks for your attention

Comments and/or questions are
welcome

E-mail: scandurra@ub.edu

