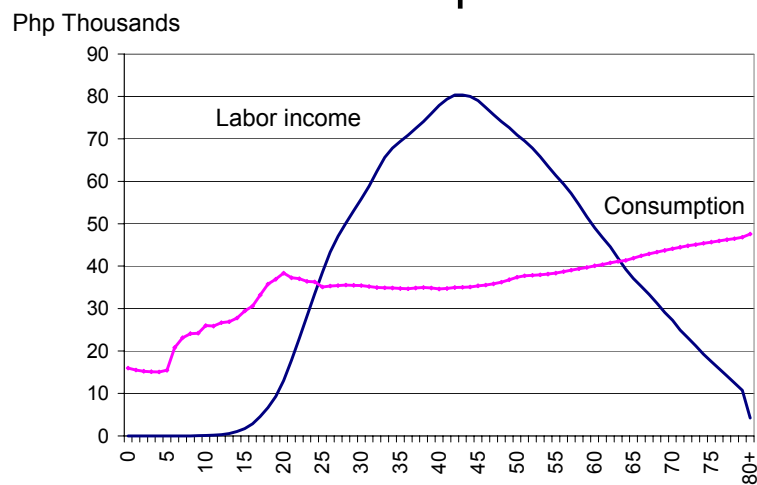


NTA Progress Report: Philippines

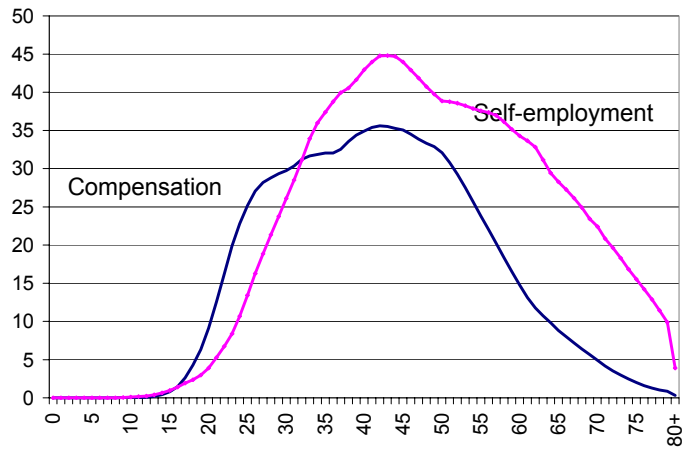
38th Summer Seminar
East-West Center
06 Jun 2007

Per capita labor income and consumption



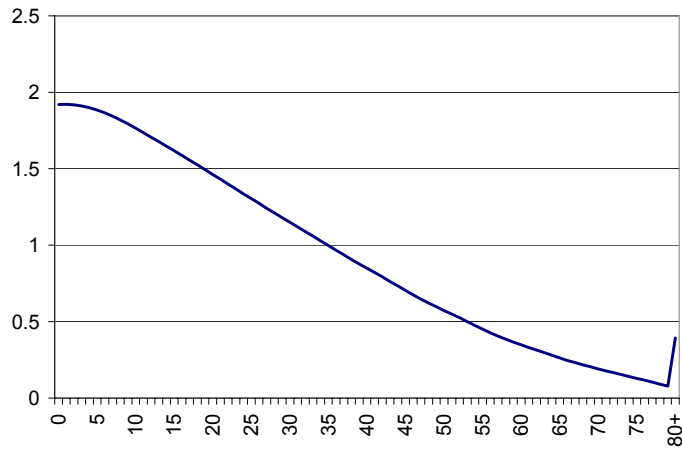
Per capita labor income, compensation and self-employment

Php Thousands

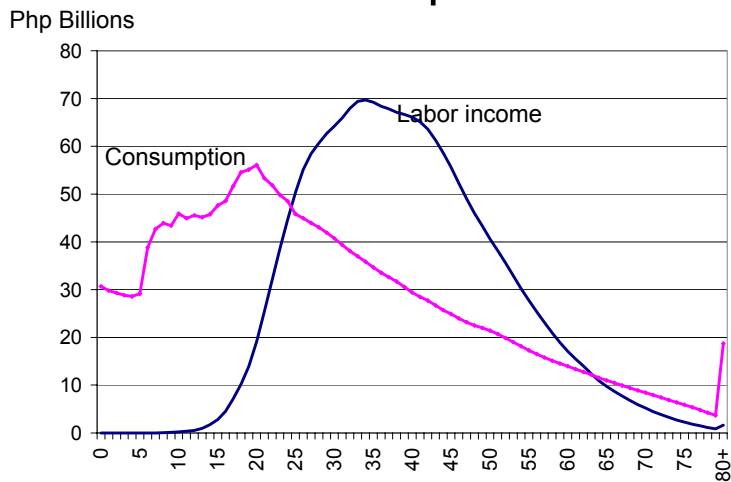


Population distribution

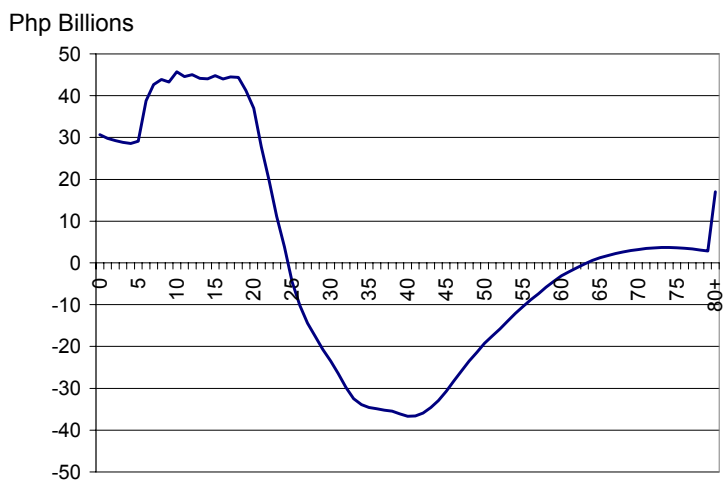
Millions



Aggregate labor income and consumption



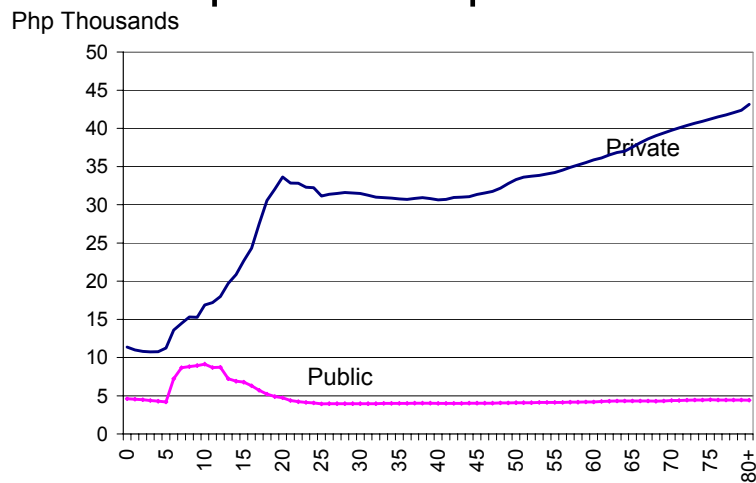
Life-cycle deficit (aggregate)



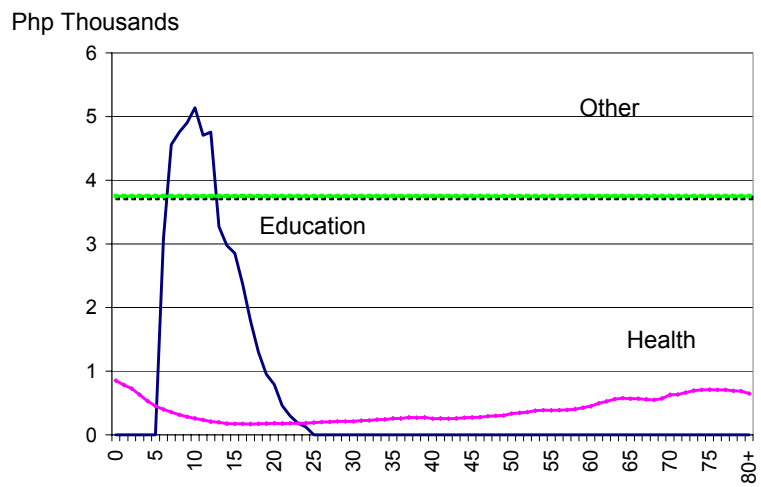
NTA Flow Account, 1999

	Total	Age group		
		0-24	25-63	64+
Lifecycle Deficit	131,003	897,319	(830,361)	64,044
Consumption	2,289,102	1,099,063	1,049,377	140,662
Public	389,238	259,042	116,663	13,532
Education	84,532	84,532	-	-
Health	24,556	14,691	7,935	1,930
Other	280,150	159,820	108,728	11,603
Private	1,899,864	840,021	932,714	127,130
Education	72,563	72,563	-	-
Health	60,978	24,106	26,327	10,545
Other	936,628	408,257	480,399	47,972
Housing	817,518	329,767	419,740	68,011
Durables	12,177	5,327	6,248	602
Labor Income	2,158,099	201,744	1,879,738	76,618
Compensation	1,030,430	136,022	879,534	14,874
Self-employment	1,127,669	65,722	1,000,203	61,745

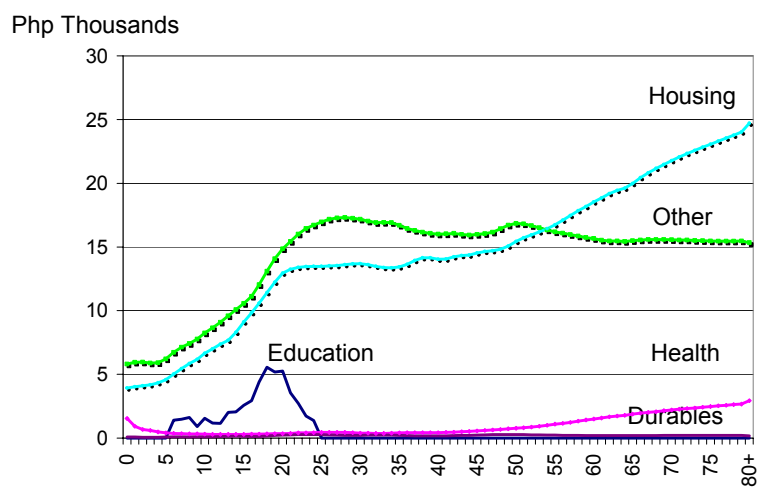
Per capita consumption, public and private



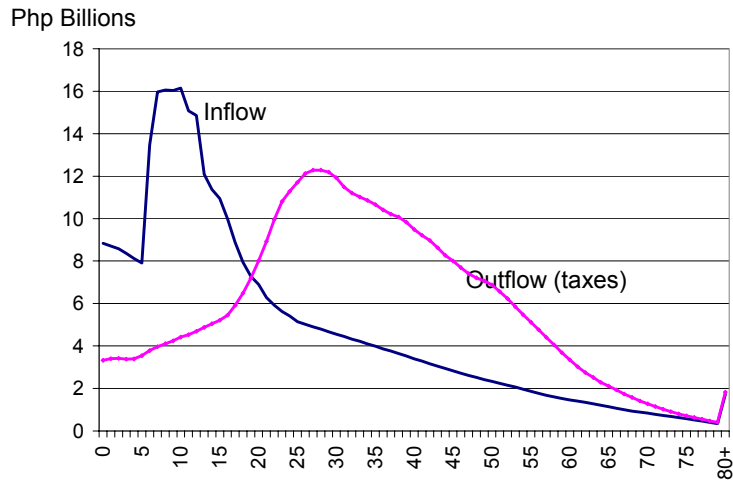
Per capita consumption, public



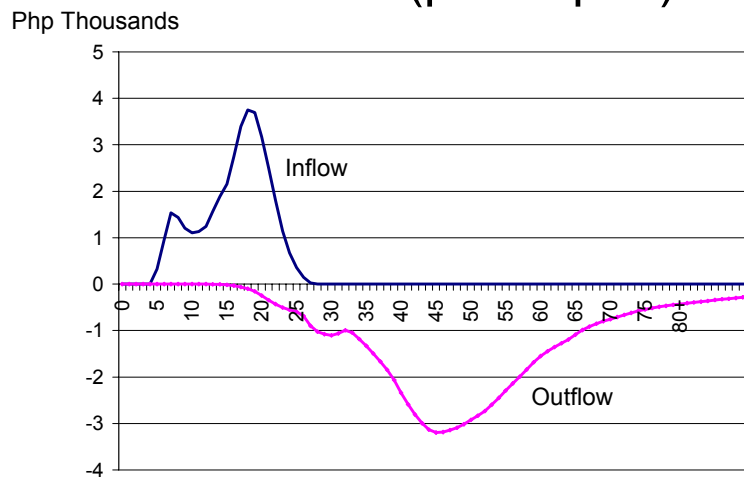
Per capita consumption, private



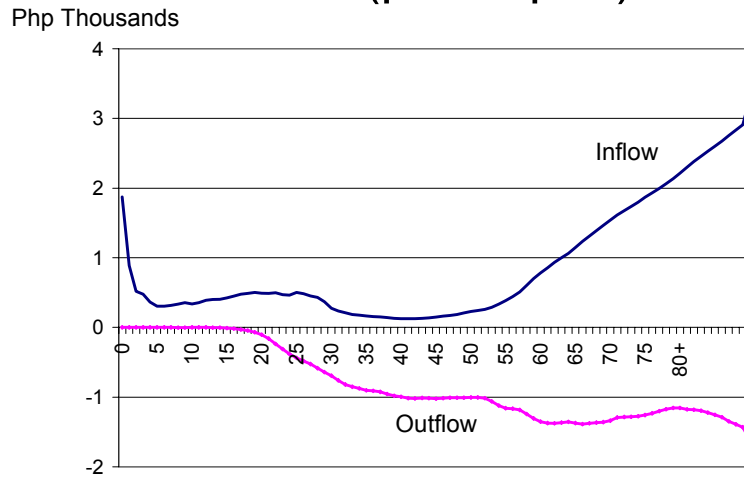
Aggregate public transfers



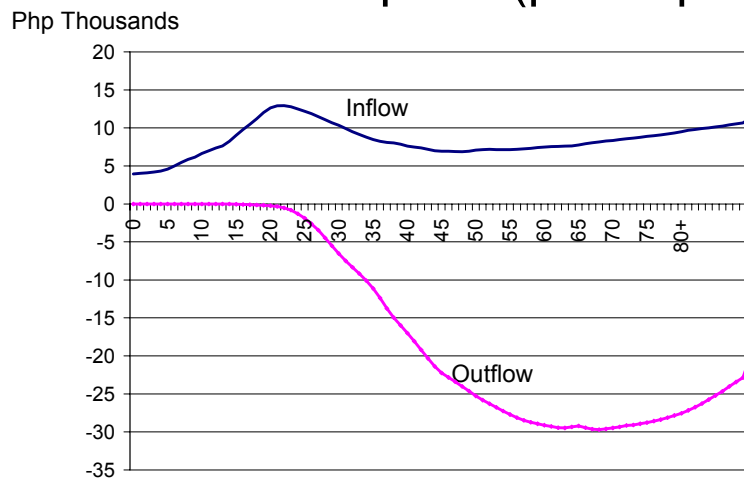
Intra-household transfers, education (per capita)



Intra-household transfers, health (per capita)



Intra-household transfers, other consumption (per capita)



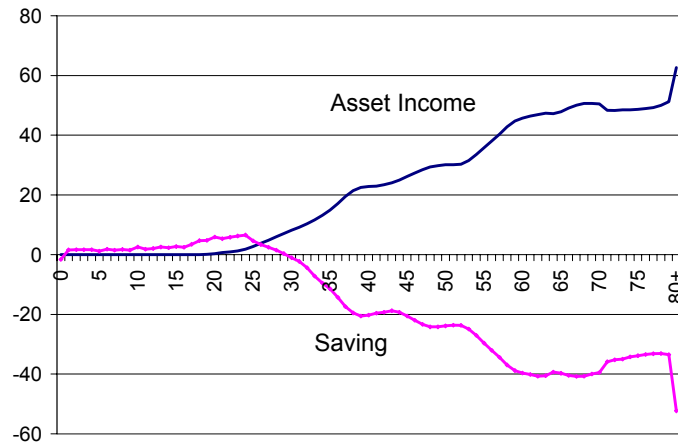
NTA Flow Account, 1999

	Total	Age group		
		0-24	25-63	64+
Age Reallocations	131,003	886,703	(818,164)	62,463
Asset-based Reallocations	116,802	1,329	48,205	67,268
Public	(198,403)	(118,729)	(111,001)	31,328
Asset Income	(27,528)	(31,099)	(7,731)	11,302
Less: Saving	(170,874)	(87,630)	(103,271)	20,026
Private	315,204	120,058	159,206	35,940
Asset Income	752,455	7,513	583,344	161,598
Less: Saving	(437,251)	112,545	(424,138)	(125,657)
Transfers	14,201	885,375	(866,369)	(4,805)
Public	(1,645)	139,510	(137,792)	(3,364)
Private	15,846	745,865	(728,577)	(1,441)
Inter vivos	15,846	745,865	(728,577)	(1,441)
Bequests	-	-	-	-

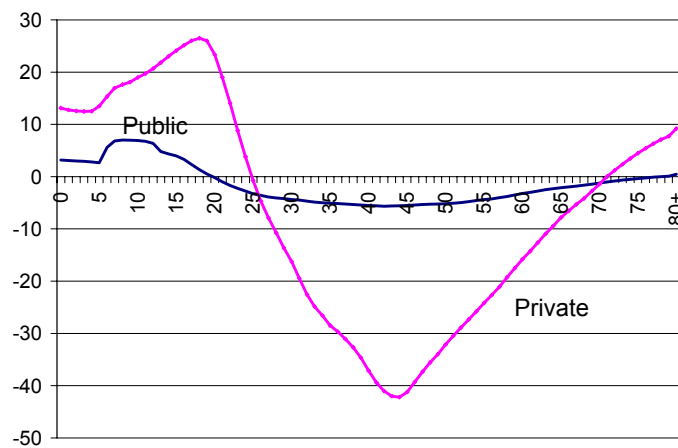
Public Asset-based Reallocation (per capita)



Private Asset-based Reallocation (per capita)



Transfers (per capita)



Some issues

- What was accomplished so far
 - almost complete 1999 estimates
 - need to add transfers from ROW
- Issues that may have
 - Bequests?
 - NIA figures for PCE by purpose/type (imputed rent)
 - 1994 without intraHH transfers
 - use official govt. or UN population projections?
- What will be done during SS07
 - R program smoothing
 - Estimates for 1994 and 2002 + applied paper)