

NTA MEXICO

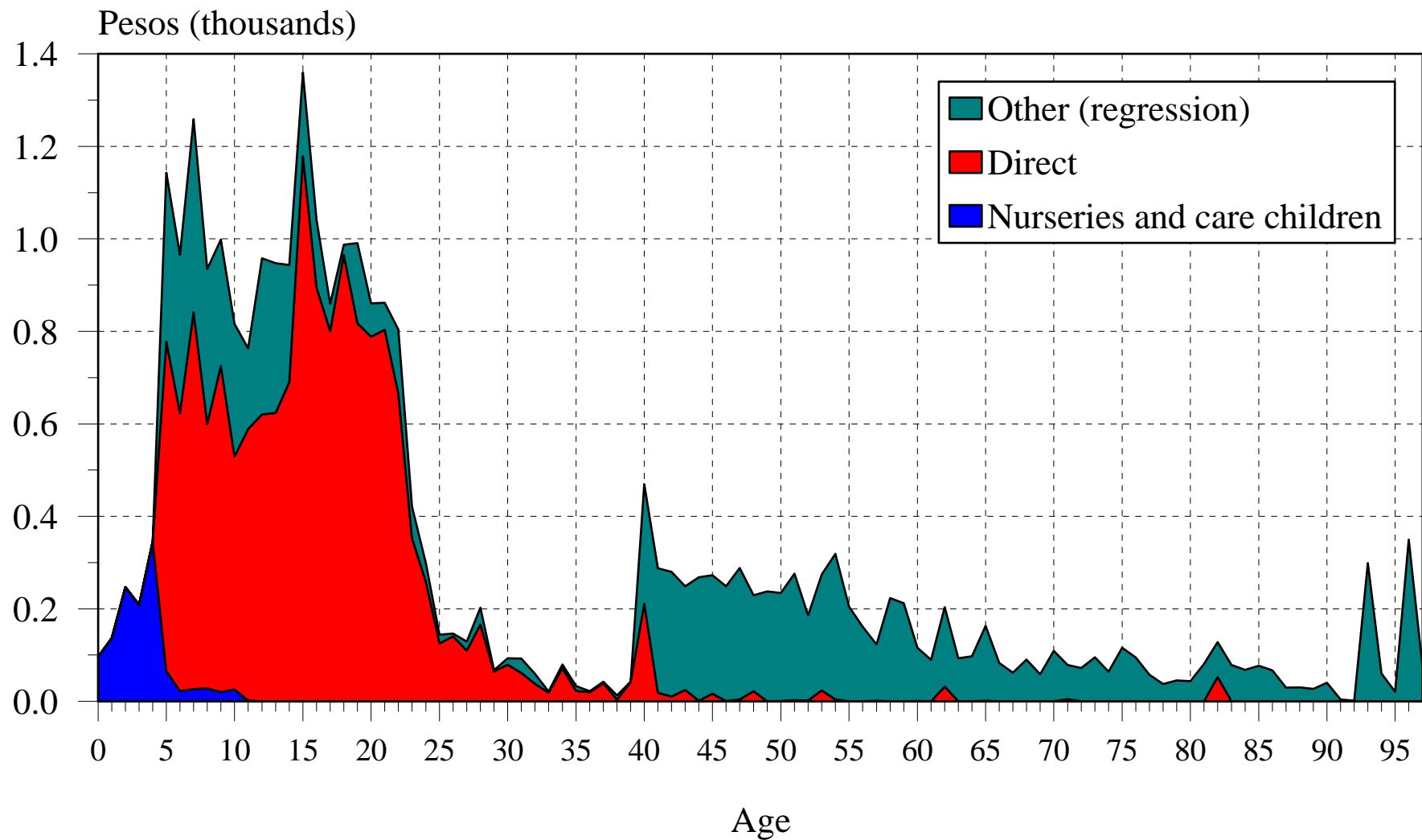
**Virgilio Partida Bush
Iván Mejía Guevara**

06/14/2007

Components of expenditure in education

- Directly assigned expenditure to each household member (well-known age)
- Nurseries (ages 0-5) and children's care (ages 0-11) expenditure
- Other expenditures (unknown age) estimated by the regression method on enrollment (ages 5-39) and non enrollment (ages 40 and over) persons

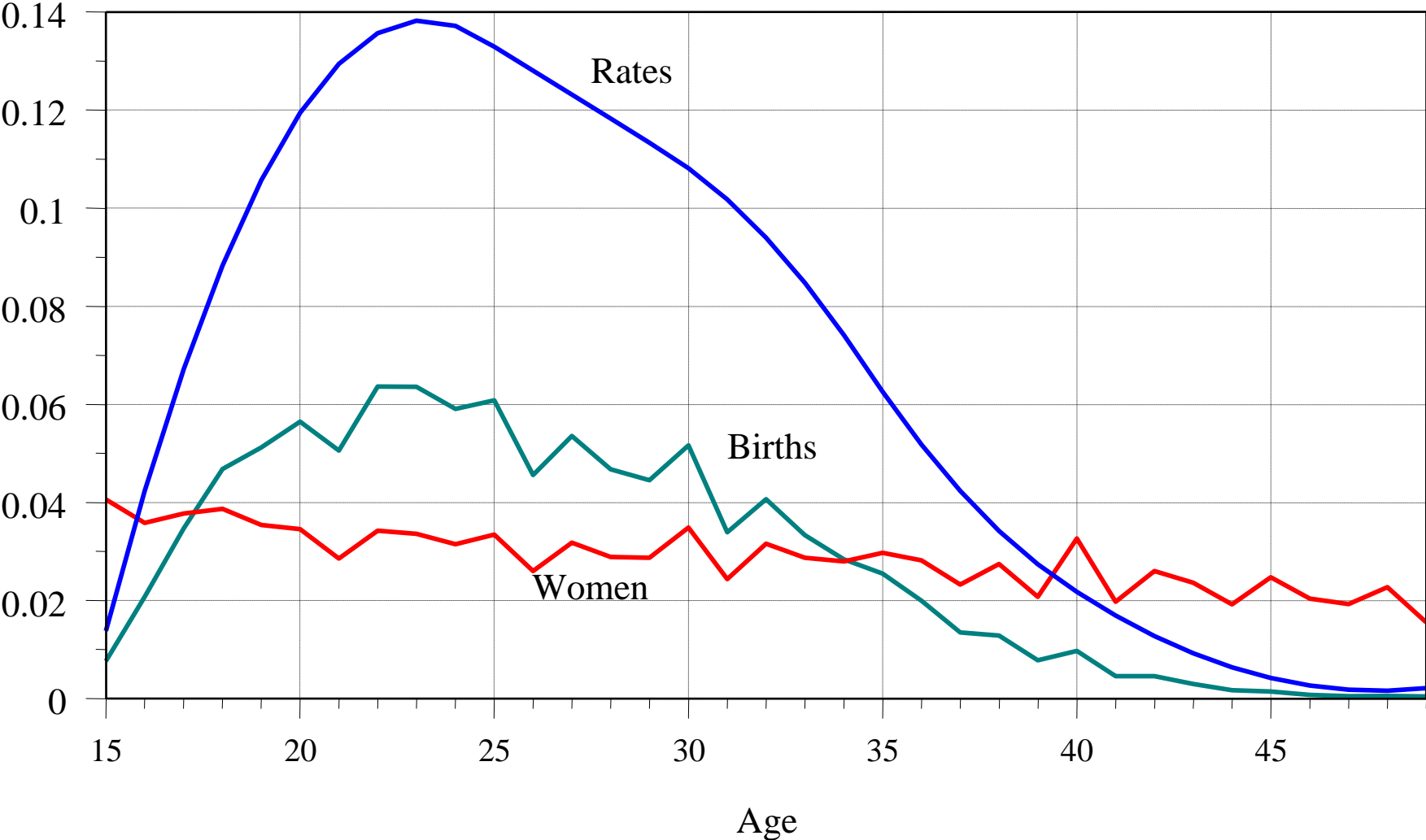
Mean education expenditure by component and age, Mexico, 2005



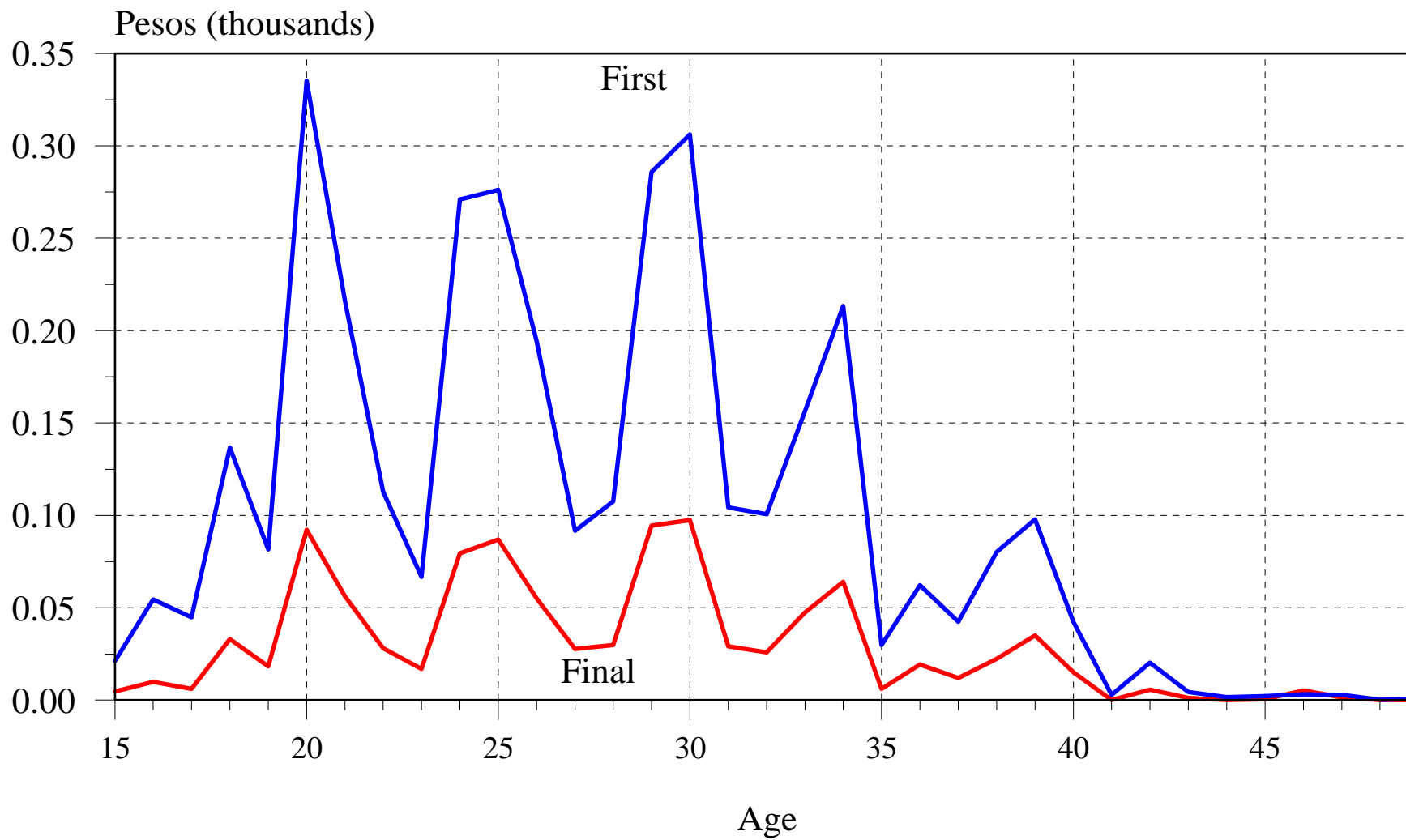
Components of health expenditure

- Maternity (pregnancy and childbirth) only women aged 15-49
- Other expenditures all ages

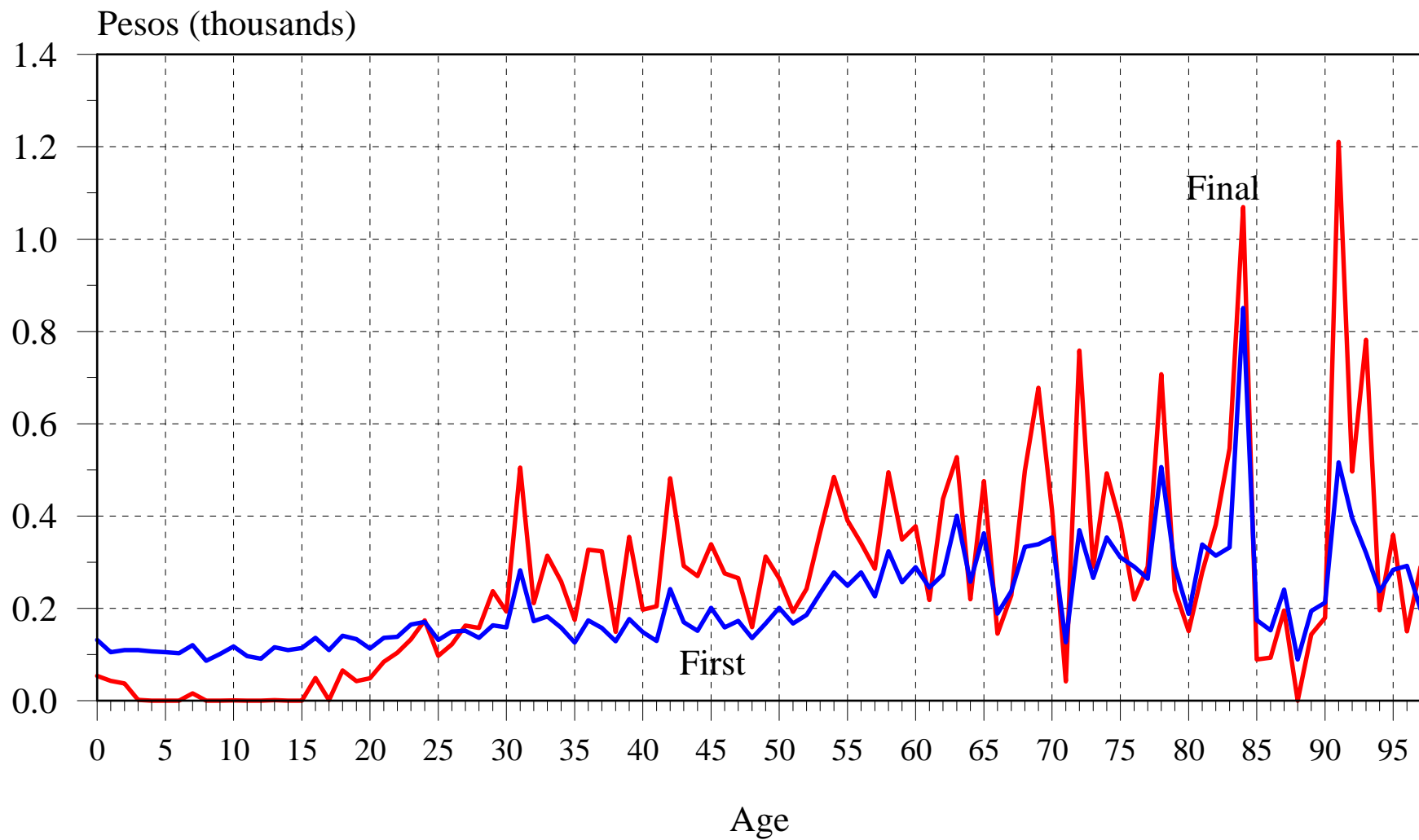
Ages profile of women and births and fertility rates, Mexico, 2005



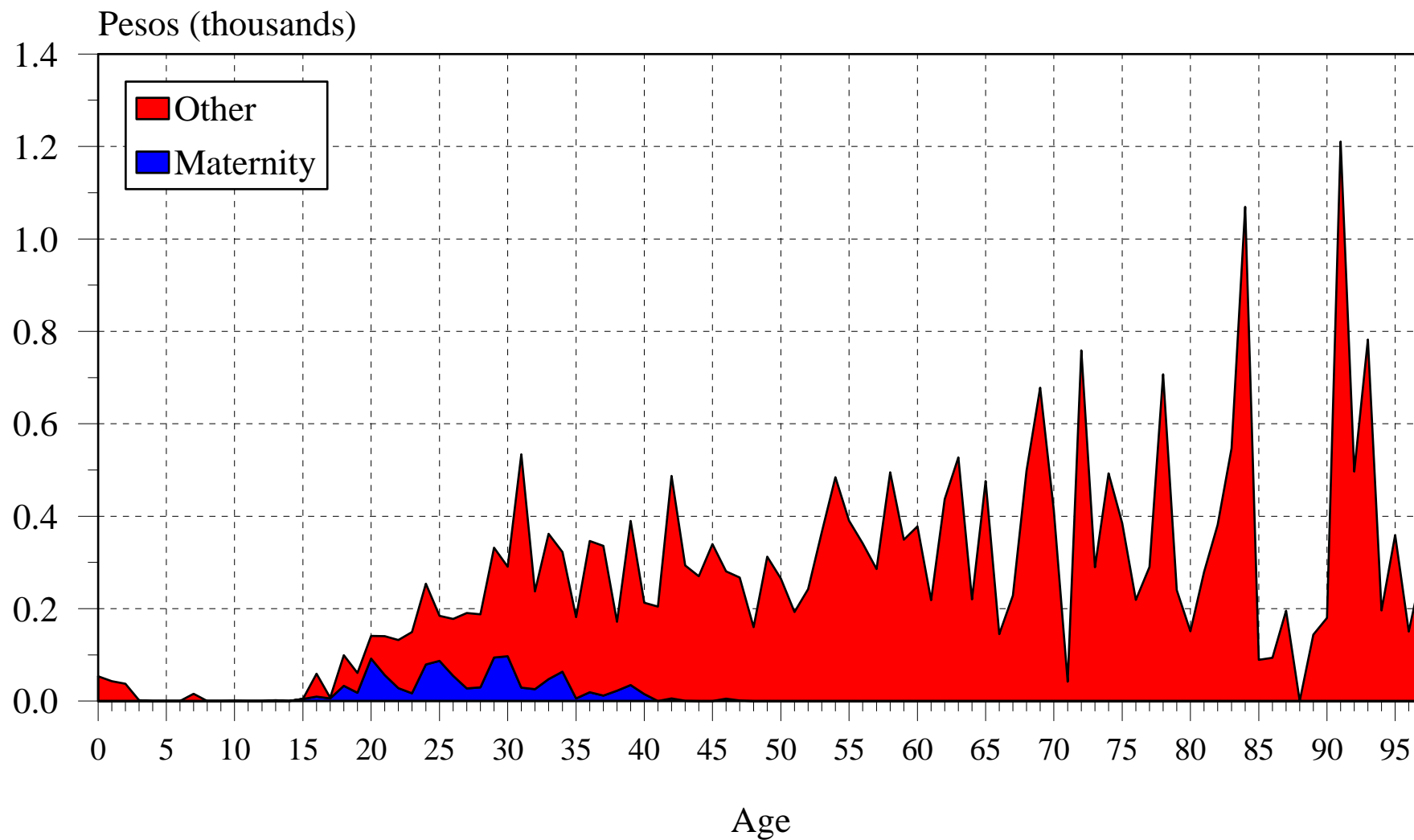
First and final iteration of maternity component, Mexico, 2005



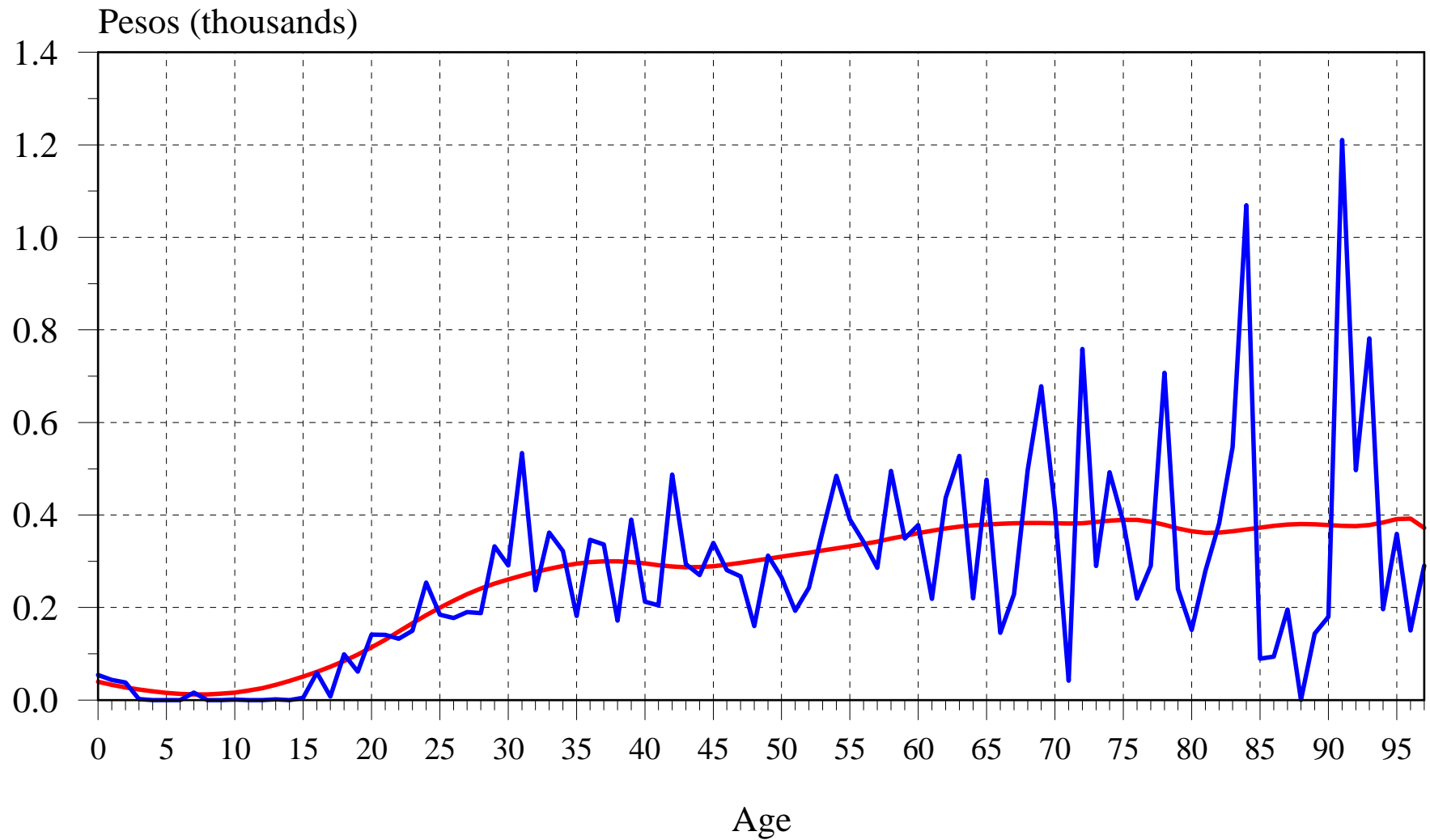
First and final iteration of other health expenditure component, Mexico, 2005



Health education expenditure by component and age, Mexico, 2005



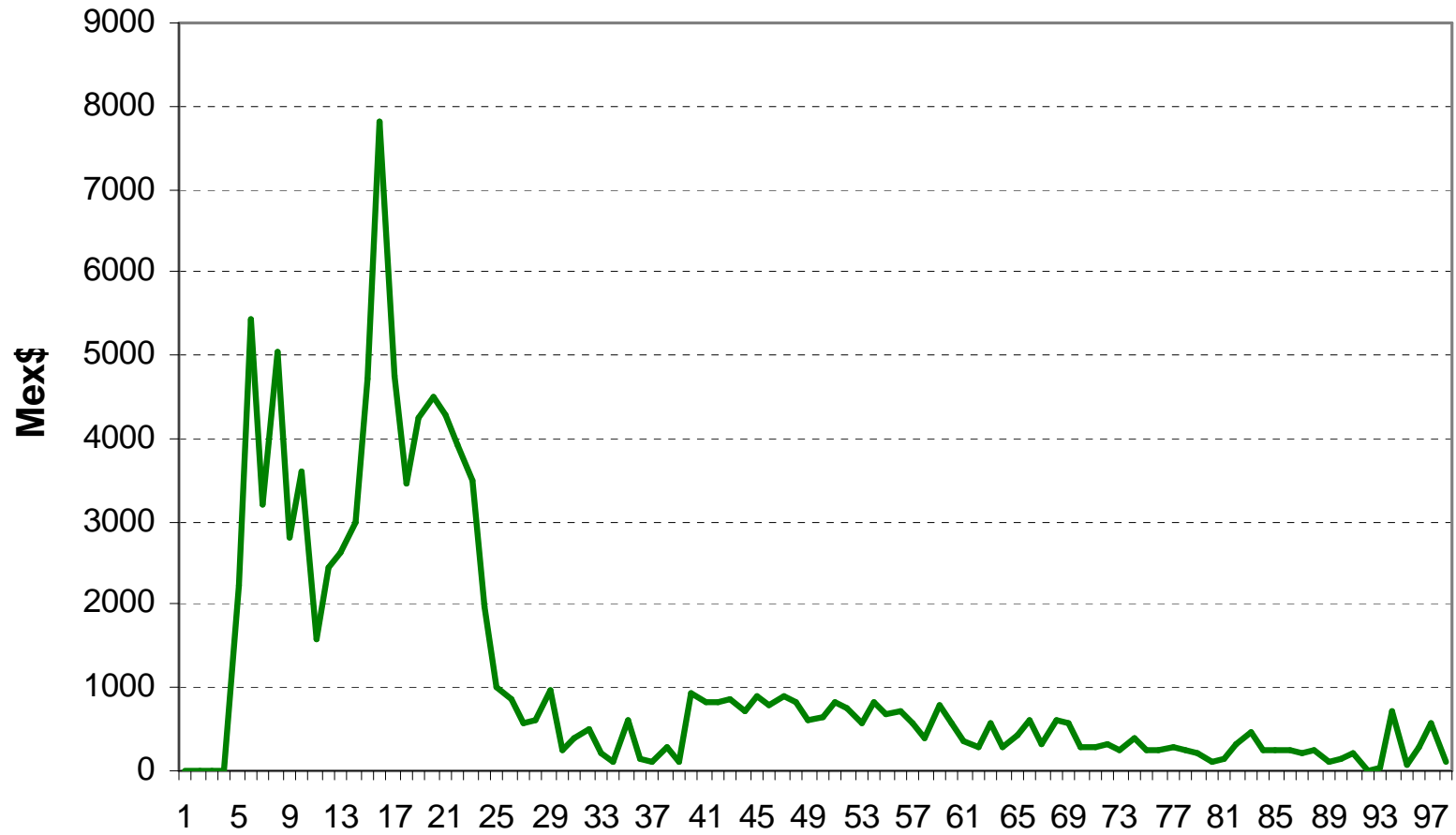
Observed and fitted health expenditure by age, Mexico, 2005



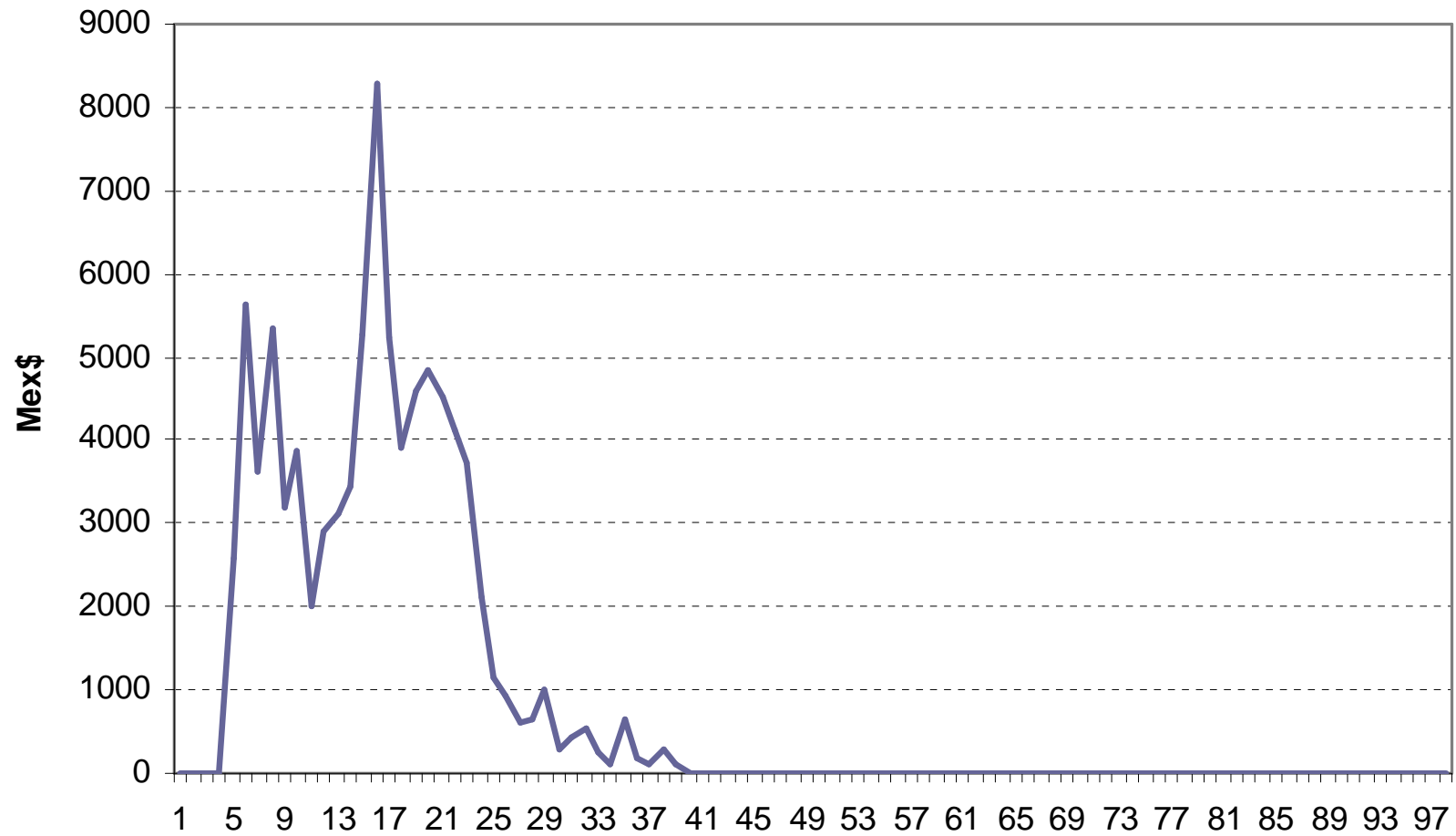
Regression Methods Consumption Profile

- Education**
- Health**
- Housing**
- Other**
- Total**

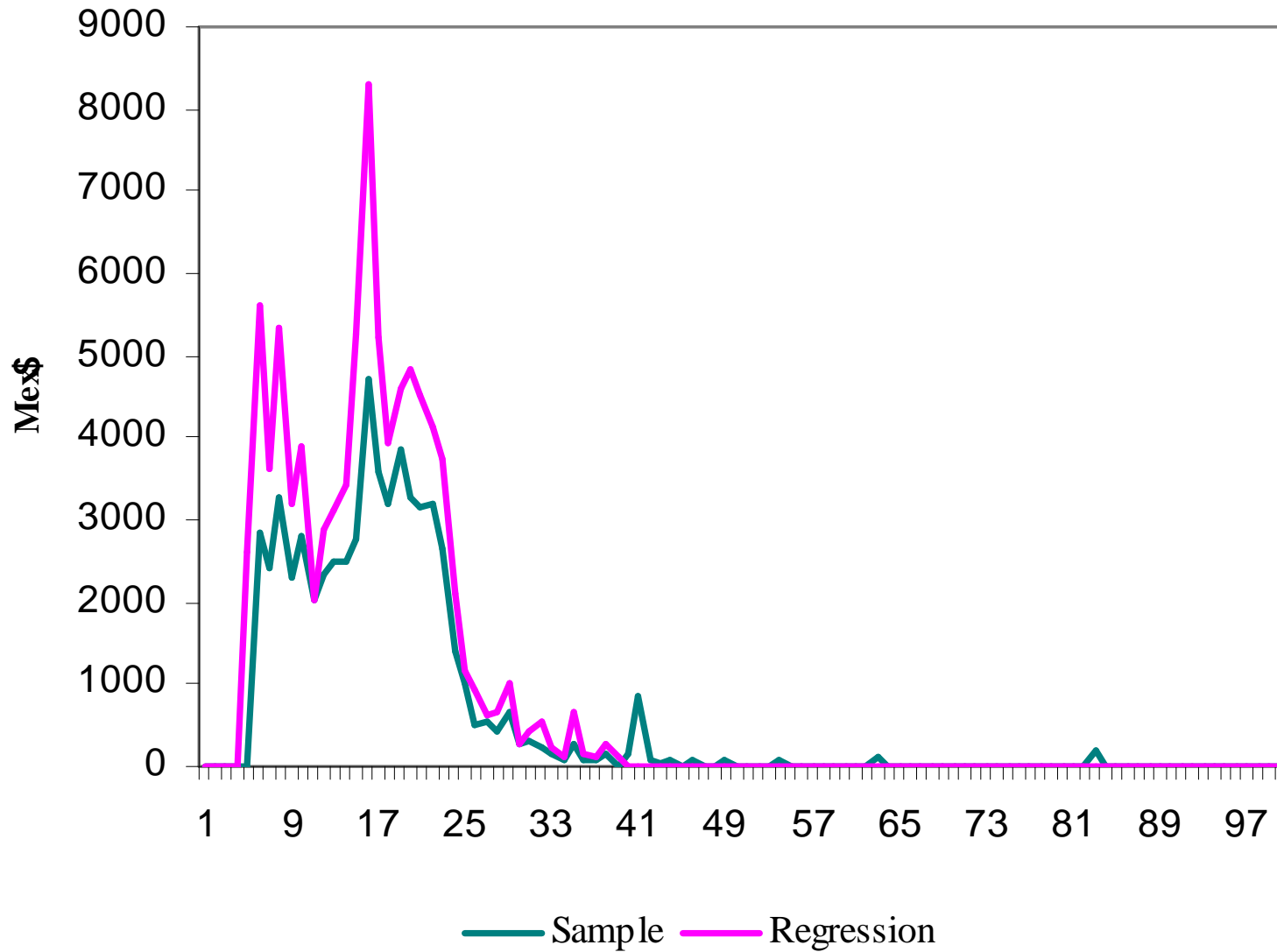
Per capita Private Education, Mexico 2005 (Regression_1)



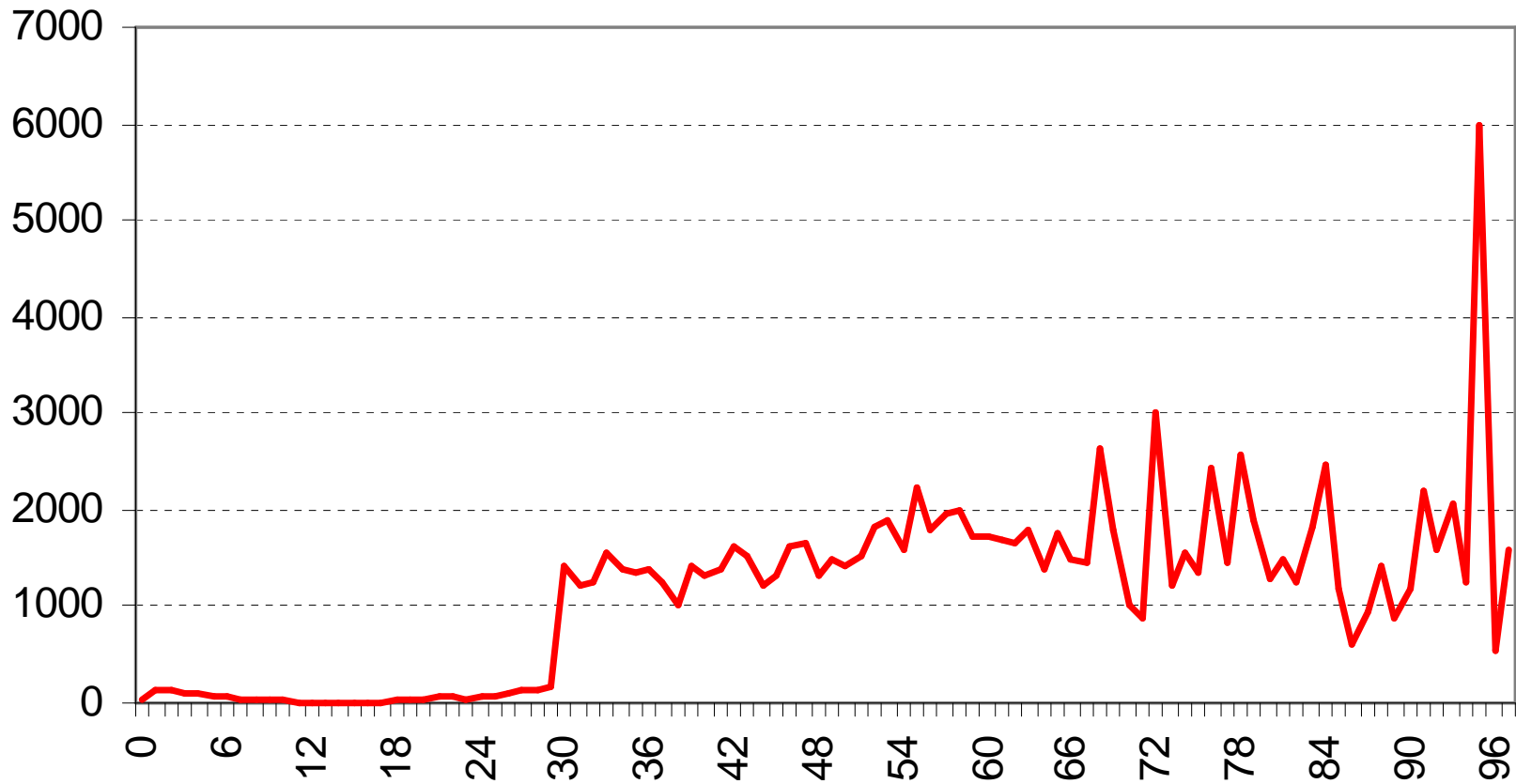
Per capita Private Education, Mexico 2005 (Regression_2)



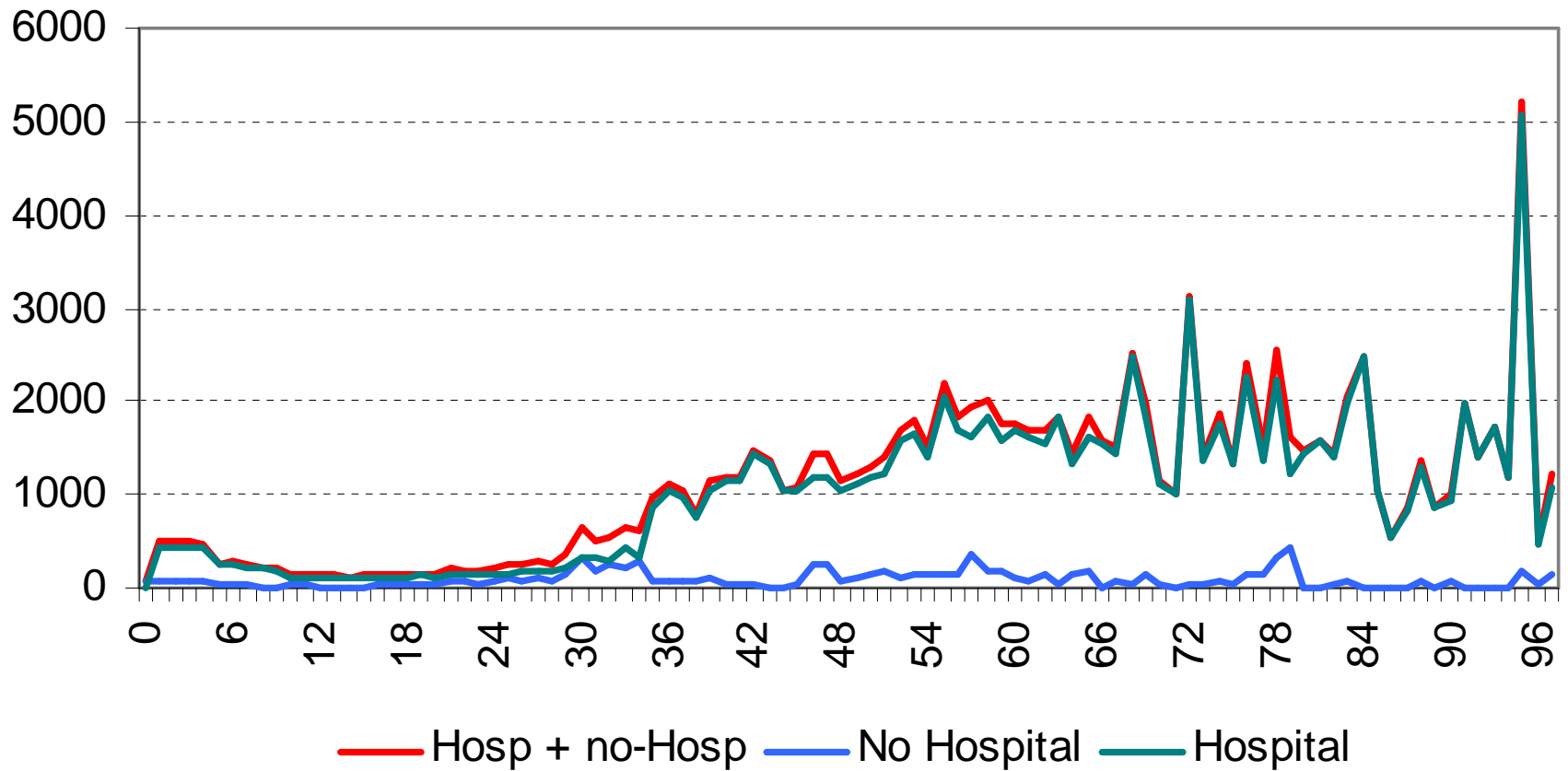
Per capita Private Education Consumption, Mexico 2005 (no AC)



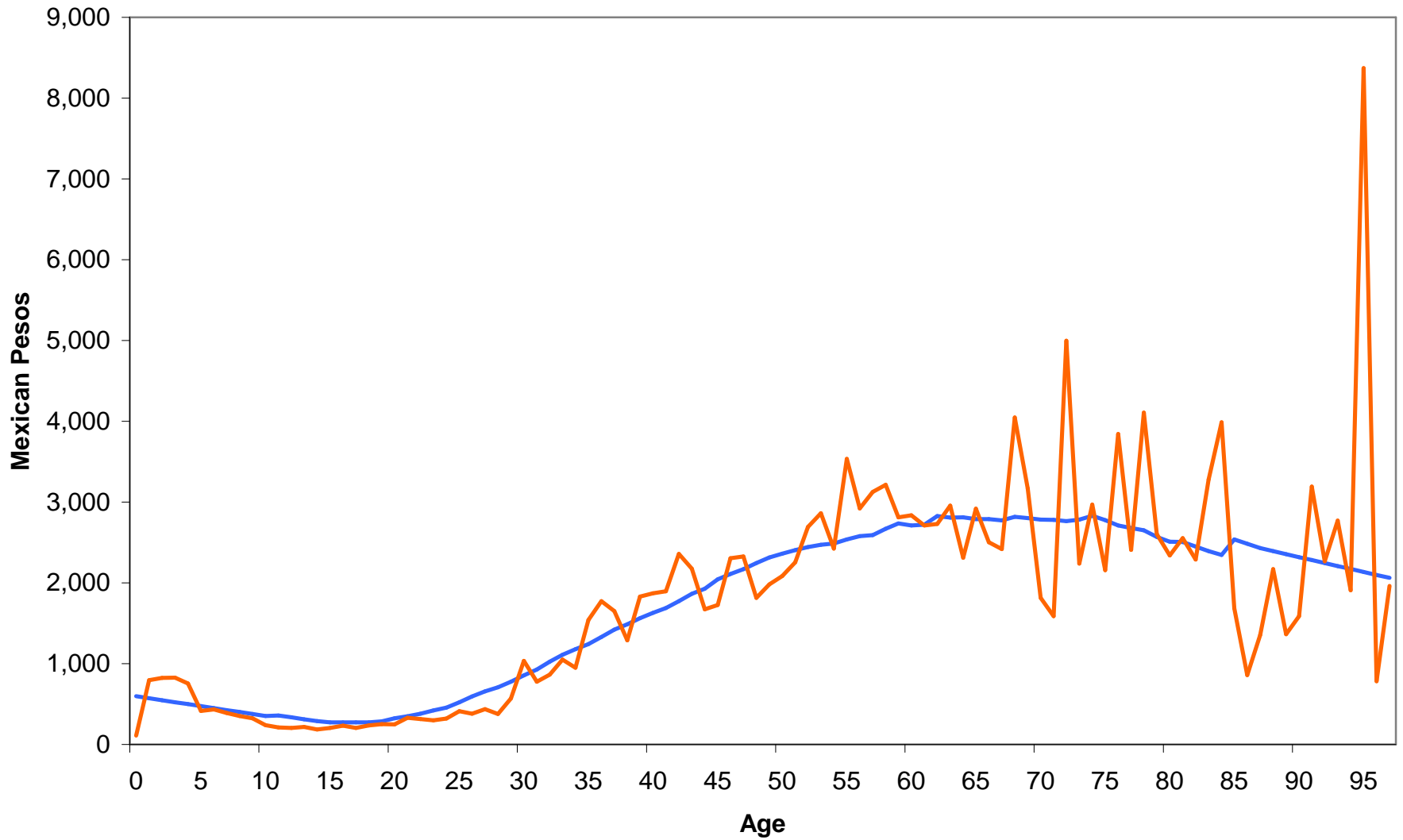
Per capita Private Health, Mexico 2005 (Regression)



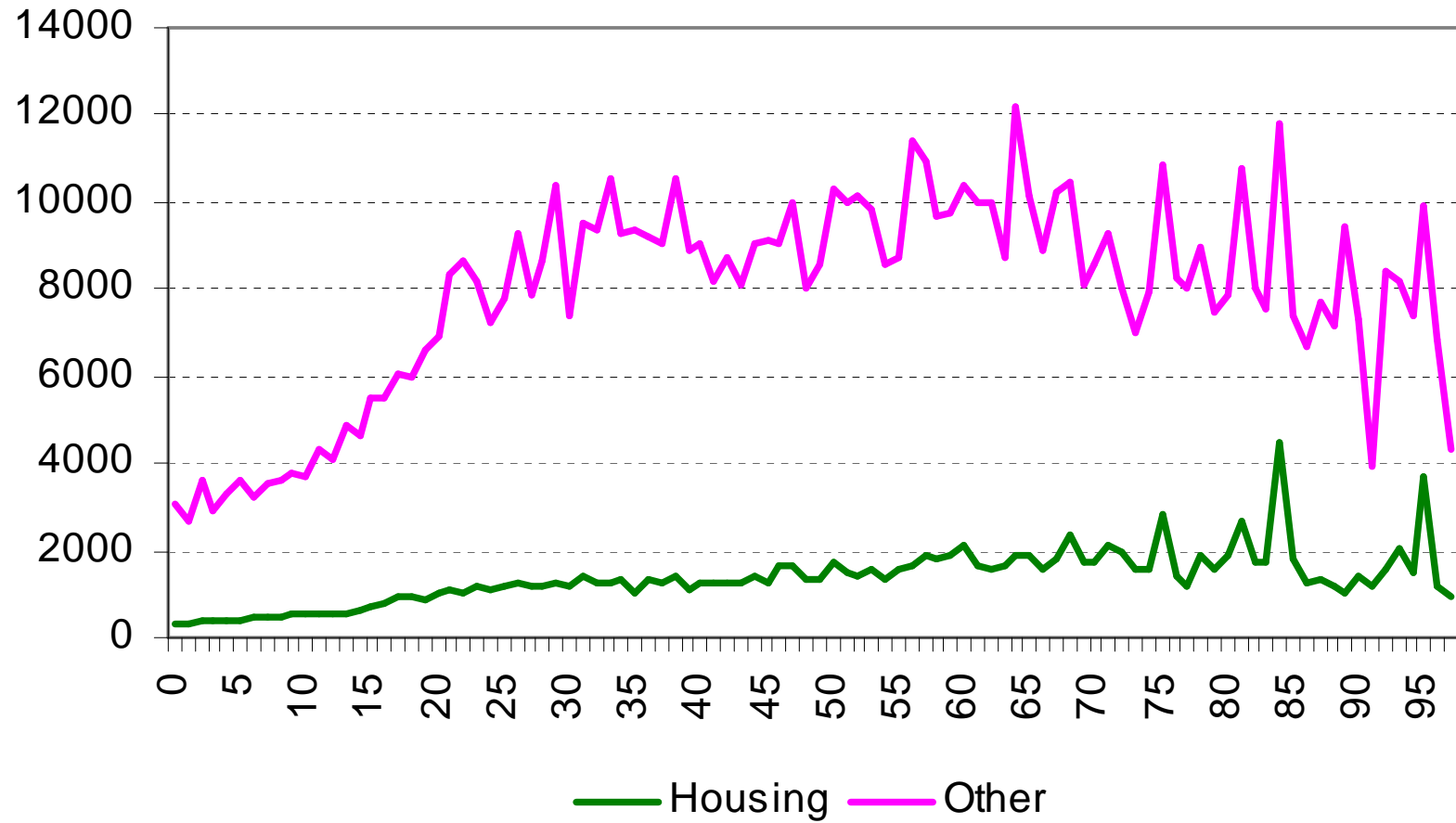
Per capita Private Health, Mexico 2005 (Regression)



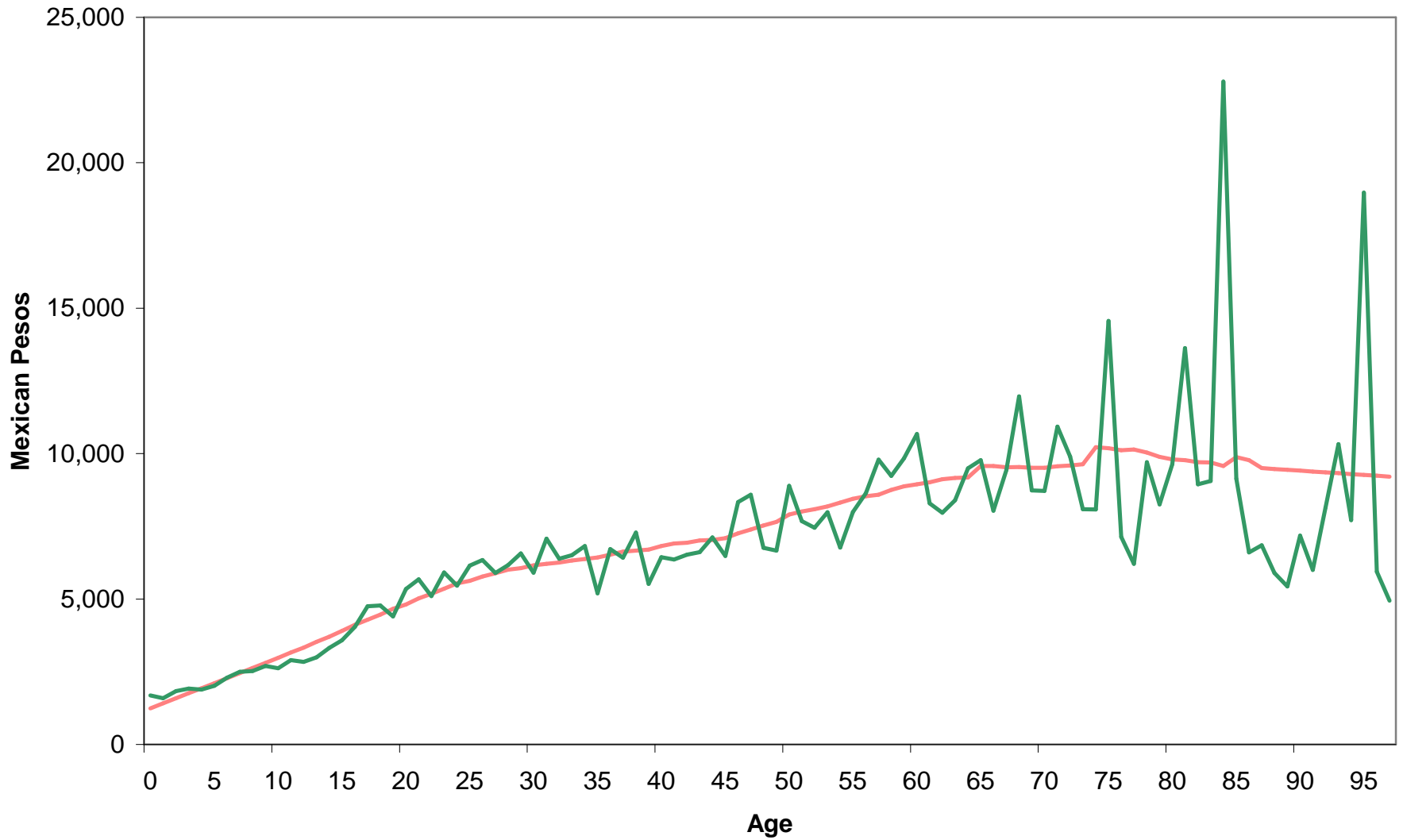
Per Capita Private Health Consumption, Mexico, 2005



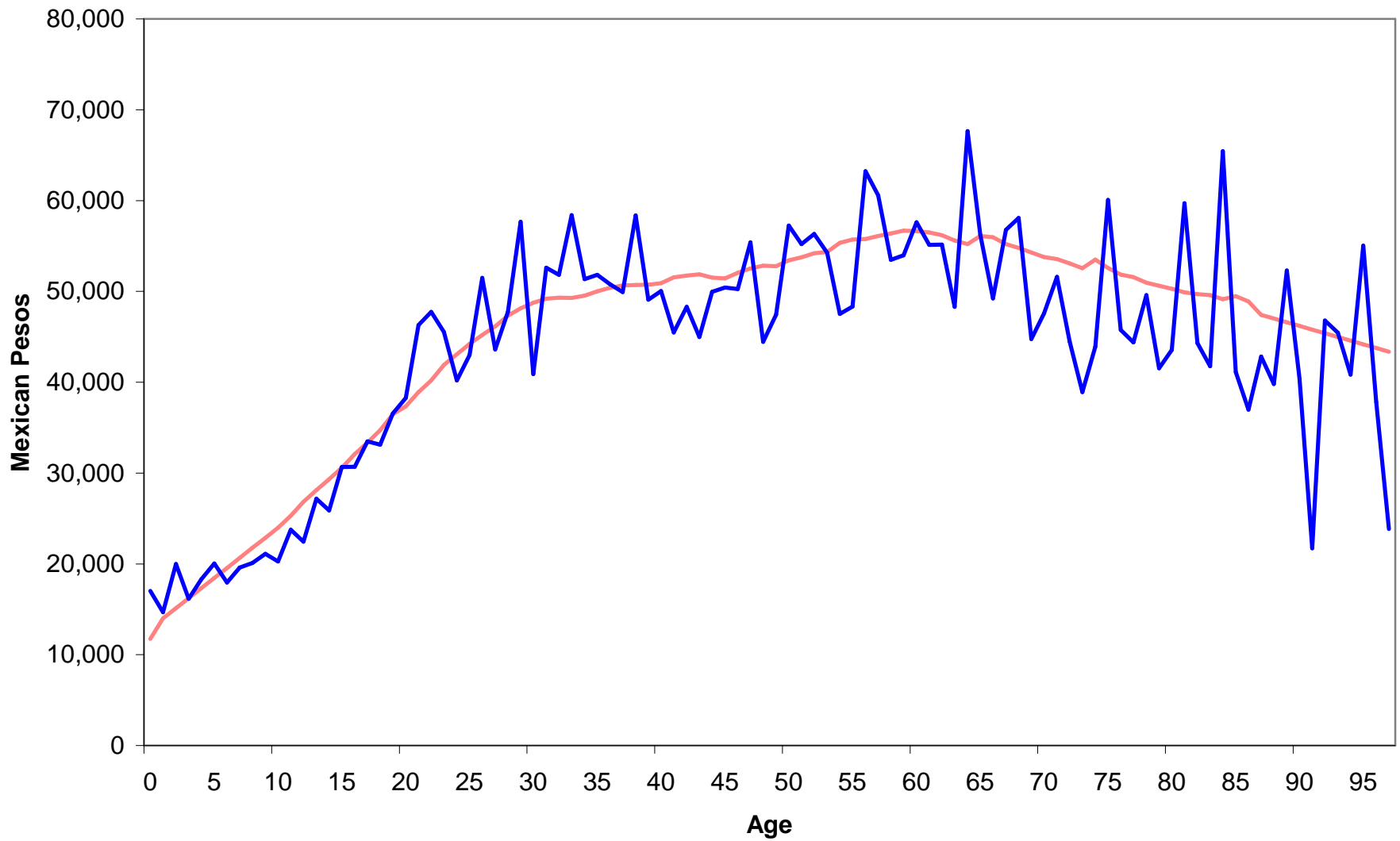
Housing and Other Private Consumption, Mexico 2005



Per Capita Private Housing Consumption, Mexico, 2005



Per Capita Private Other Consumption, Mexico, 2005



Per Capita Private Consumption, Mexico, 2005

