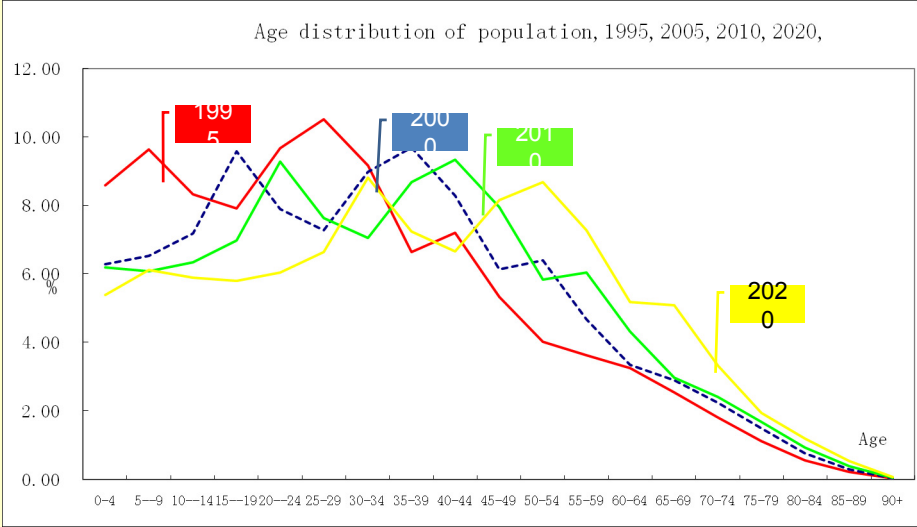


Workshop Report on
National Transfer Accounts

China

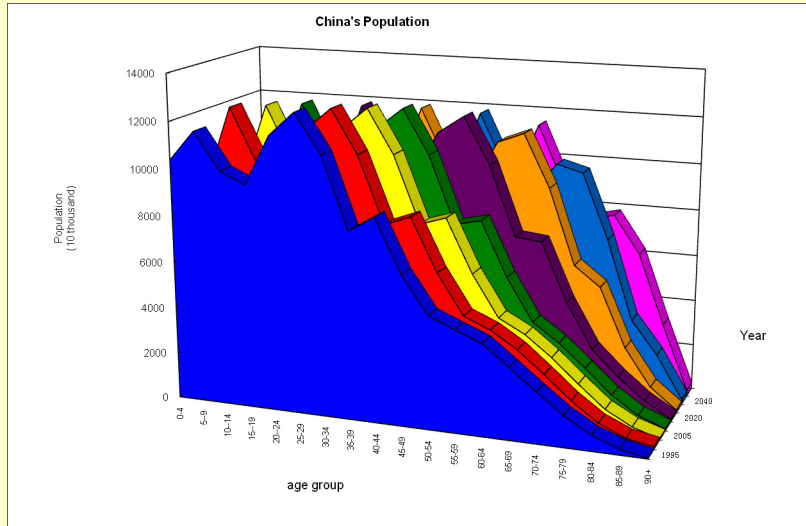
2007-06-26

1995 Age Distribution and Projection



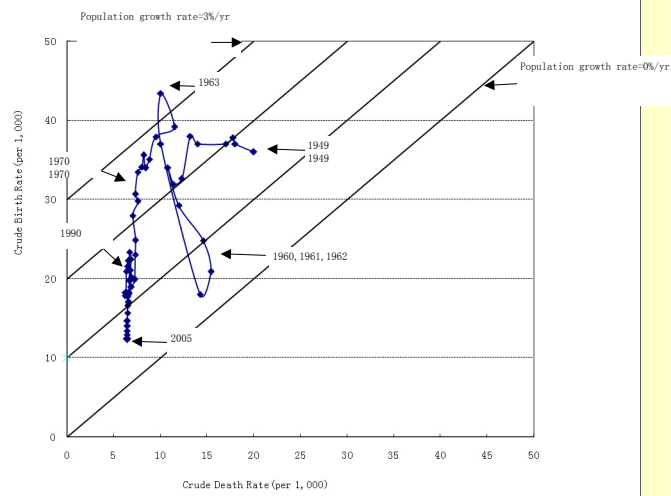
Source: NBS China

China's Population



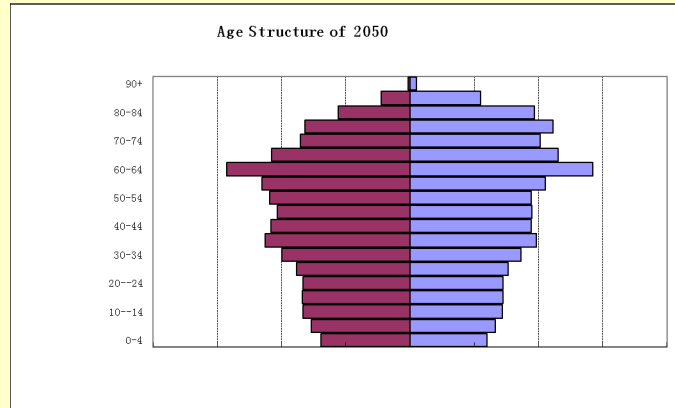
3

Crude Birth Rate vs. Crude Death Rate, China, 1919-2005



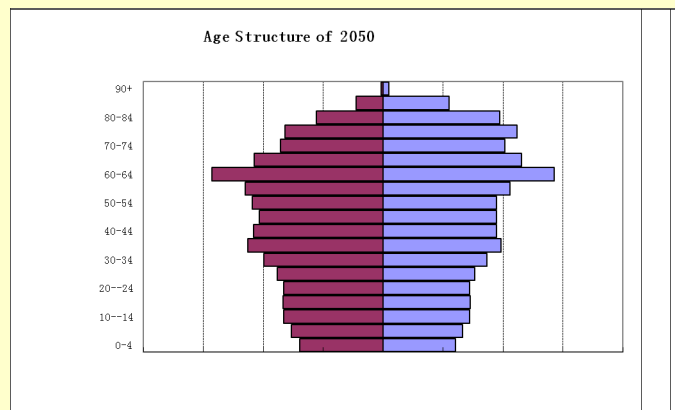
4

Age Structure



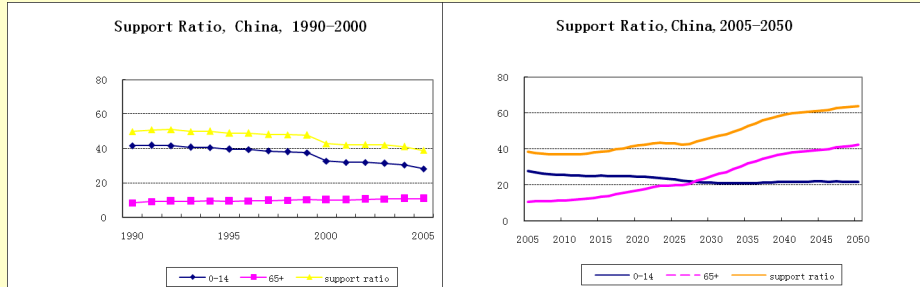
5

Age Structure



6

Support Ratio



Note:

1. Support Ratio Decrease from 1990- 2005
2. Support Ratio will increase since 2015
3. The increase of Support Ratio is mainly due to the increase of aging.

7

1995 National Account (Rural-Urban & Total)

	Total	Rural	Urban
Lifecycle Deficit	(2736.5)	(1774.5)	(962.0)
Consumption	27968.2	9381.9	18586.3
Public	6691.0	1399.1	5291.9
Health	173.3	52.0	121.3
Education	1246.2	518.4	727.8
Others	5271.5	828.7	4442.8
Private	21277.2	7982.8	13294.4
Health	1047.2	416.4	630.8
Education	1924.7	965.9	958.7
Others	25367.8	8554.7	16813.1
Less: Indirect Taxes on Consumption	7062.5	1954.3	5108.2
Less: Labor Income	30704.7	11156.4	19548.3
Age Reallocations	(2736.6)	(1774.5)	(962.0)
Asset-Based Reallocations	(2801.7)	(1233.6)	(1568.1)
Public Asset-Based Reallocations	(8212.4)	(3828.2)	(4384.2)
Public Income on Assets	0.0	0.0	0.0
Less: Public Saving	8212.4	3828.2	4384.2
Private Asset-Based Reallocations	5410.7	2594.6	2816.1
Private Income on Assets	13554.2	3974.2	9580.0
Less: Private Saving	8143.5	1379.6	6763.9
Transfers	65.1	(541.0)	606.1
Private	65.1	11.2	53.9
Public (Rural-Urban)	0.0	(552.2)	552.2

8

1995 National Account (Rural-Urban & Total)

GDP (Income Approach)

Gross Domestic Income	1995	rural	urban
Compensation of Employee	27895.8	10362.9	17532.9
Operating Surplus	16148.6	4561.8	11586.8
Indirect Taxes Less Subsidies	7811.7	2252.3	5559.5
Indirect taxes	8139.5	2252.3	5887.2
Less Subsidies	327.8	0.0	327.8
Consumption of Capital (Depreciation)	7596.3	2066.6	5529.7
Gross Domestic Income	59452.5	19243.6	40208.9
	59452.5	19243.6	40208.9

9

1995 National Account (Rural-Urban & Total)

GDP (Expenditure Approach)

Gross Domestic Product			
Consumption	35030.7	11336.1	23694.5
Government Final Consumption Expenditure	6691.0	1399.1	5291.9
Health	173.3	52.0	121.3
Education	1246.2	518.4	727.8
Others	5271.5	828.7	4442.8
Private Final Consumption Expenditure	28339.7	9937.1	18402.6
Health	1047.2	416.4	630.8
Education	1924.7	965.9	958.7
Others	25367.8	8554.7	16813.1
Gross Investment	23878.8	7261.8	16617.0
Gross Fixed Capital Formation	20302.0	5888.8	14413.2
Increase in Stocks	3576.8	1373.0	2203.8
Net Export	543.0	93.5	449.5
Exports of Goods and Services			
Less: Imports of Goods and Services			
Net Rural subsidy to Urban	0.00	552.19	-552.19
Gross Domestic Product	59452.5	18691.4	40761.1
Rural-Urban GDP	59452.5	18139.2	41313.3

1995 National Account (Public Account)

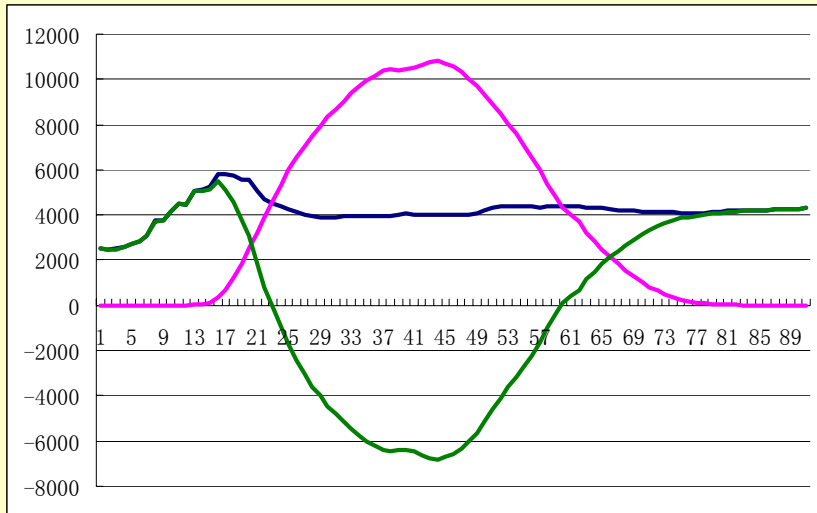
Public Transfers		5,120	Public Investment		1,704
<i>In-kind Transfers</i>		4,639	Production Capital Construction Expenditures		536.67
	Culture, Education Science and health Care	1467.06	Supporting Agriculture production		220.62
	Education	1193.84	Expenditure on Circulating Funds for SOEs		34.8
	Health	163.26	R&D		494.45
	Culture and Science	109.96	Geological Prospecting		66.32
	Other social development and welfare	386.56	City Maintenance Expenditures		285.8
	General Administration	996.54	Other Construction Expenditures		65.32
	Defence	636.72	Public Credit Transactions		882
	Nonproductive Capital Construction Expenditures	252.55	Principal and Interest Payments on Domestic and Foreign Debt		878.36
	Supporting Agriculture Administration	209.6	Interest payment on domestic bonds		779.46
	Administration of Industry, Transportation and Commerce	102.76	Interest payment on Foreign Debts		71.69
	Other Social Services	588	Repayment on People's Bank Loans		27.21
<i>Cash Transfers</i>		480	Key Construction Projects Expenditures Using Foreign Debt		3.98
	Pensions and Social Welfare Relief	115.46	Government Expenditure		7,706
	Expenditures on Pensions	29.11			
	Retire Relief Funds	22.78			
	Relief Funds for Natural Disasters	27.27			
	Social Welfare Relief Funds	24.19			
	Other	12.11			
	Price Subsidies	364.89			

1995 National Account (Cont.) (Public Account)

Tax Revenue		5,710
	Personal Income Tax	0
	Corporate Income Tax	878.44
	Less: Subsidies	327.77
	Industrial and Commercial Tax	4589.68
	Tariff	291.83
	Agricultural and Animal Husbandry Taxes	278.09
	Social Security Contributions	0
Non-tax Revenue		1,996
	Income from Government Enterprises	0
	Fund for Key Construction Projects	17.42
	Fund for Budget Adjustment	34.92
	Extra Charge for Education	83.4
	Other revenue	310
	Total Debt incurred	1549.76
	Domestic Bonds and Treasury Bills	1510.86
	Foreign Debt	38.9
Government Revenue		7,706

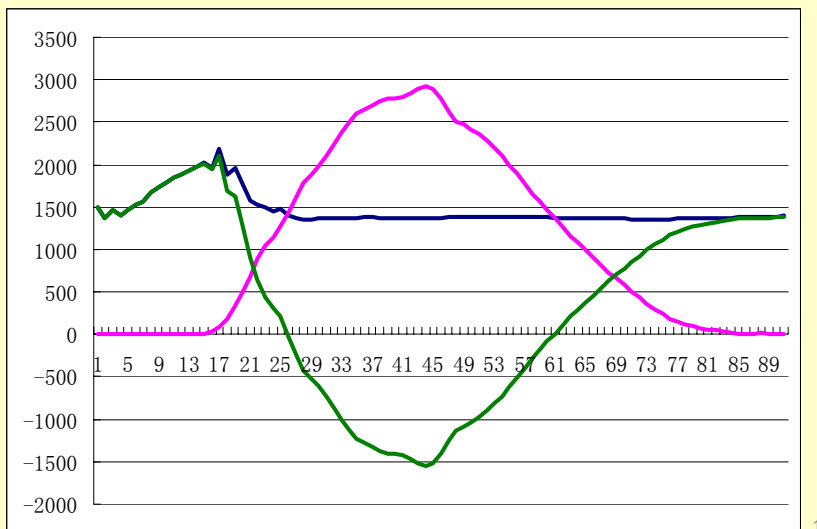
Results: 1995 updated

LCD, Urban, Per capita



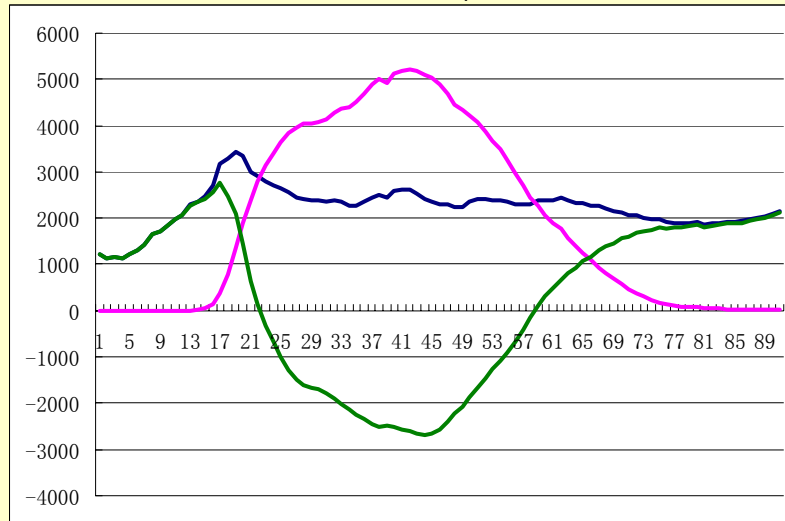
Results: 1995 updated

LCD, Rural, Per capita



Results: 1995 updated

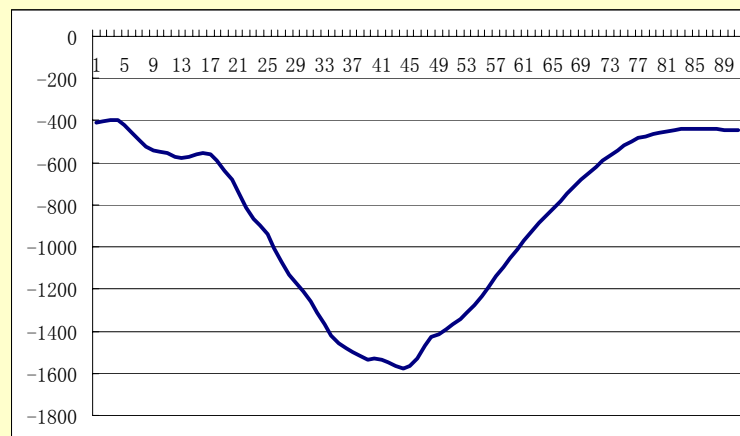
LCD, National, Per capita



15

Results: 1995 updated

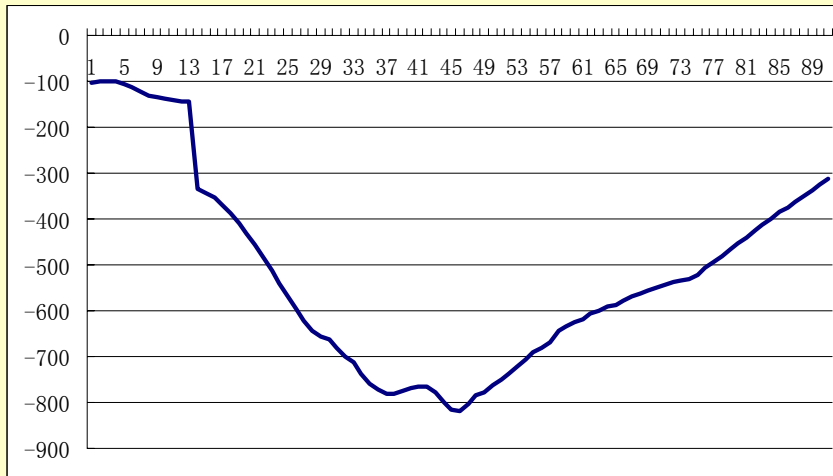
Urban, Public Transfer, outflow



16

Results: 1995 updated

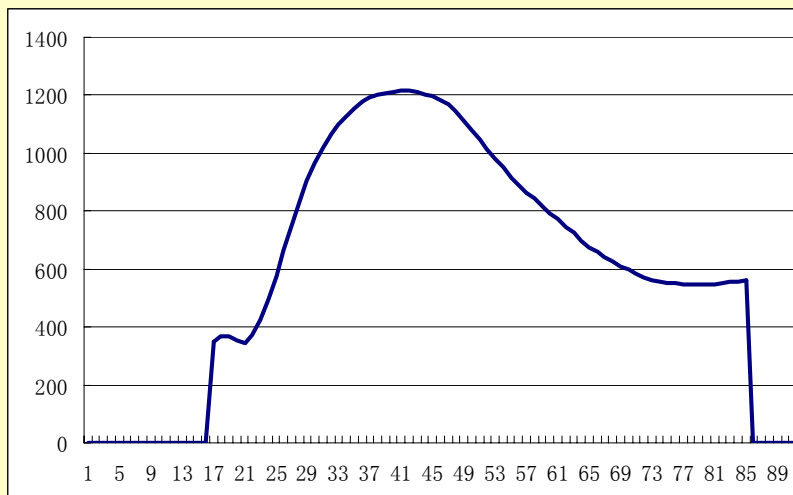
Rural, Public Transfer, outflow



17

Results: 1995 updated

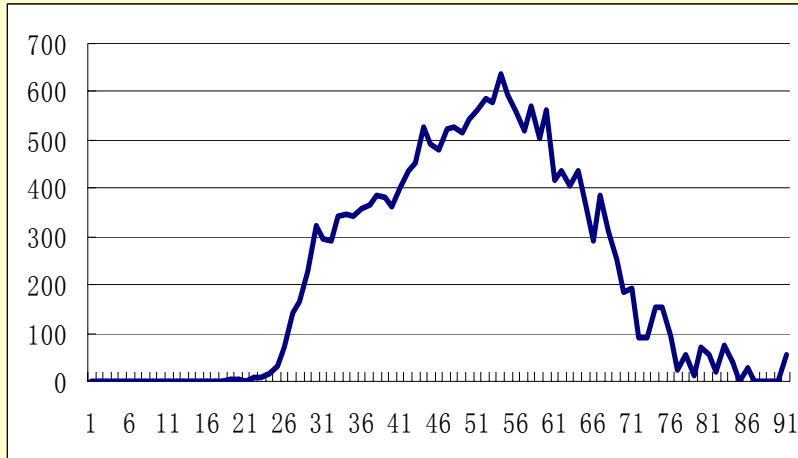
Rural, Assets Income



18

Results: 1995 updated

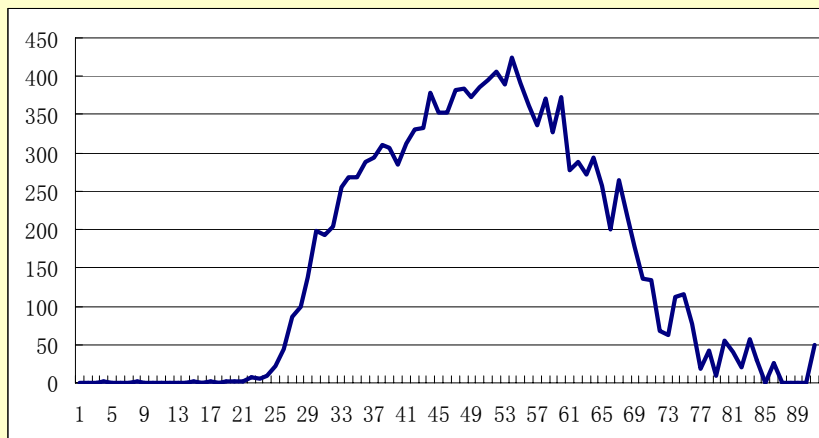
Rural, Public Transfer



19

Results: 1995 updated

Rural, Private saving



20