

Mid Report on
National Transfer Accounts

China

2007-06-14

Contents

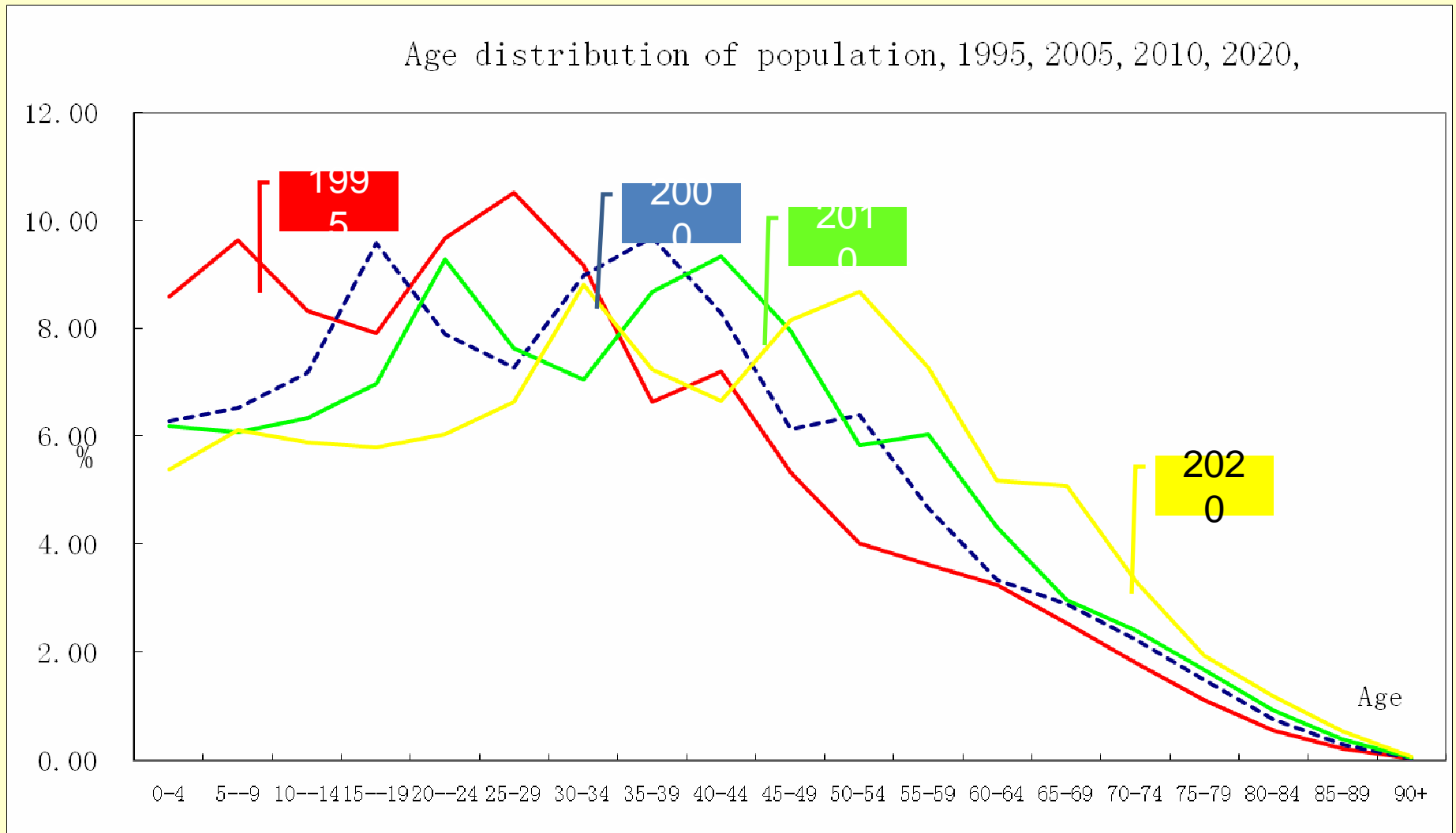
- What we have done here?

DATAs

- Household data source:
 - Rural Household Income Survey (RHIS), 2002
 - National Aged Population Survey (NAPS) ,2004
 - National Health Service Survey (NHSS2003)
 - Chinese Household Income Project (CHIP) , 1995

- Aggregate data source
 - Statistical yearbook
 - Population census data
 - Some specific yearbooks
 - National Healthcare Survey Data

1995 Age Distribution and Projection



Source: NBS China

1995 National Account (Rural-Urban & Total)

	Total		Rural		Urban
Lifecycle Deficit	-2805.3		1899.3		-4704.7
Consumption	27899.4		13055.7		14843.7
Public	7123.0		1489.4		5633.6
Health	184.5		55.3		129.1
Education	1246.2		518.4		727.8
Others	5692.3		915.7		4776.7
Private	20776.4		11566.3		9210.1
Health	1047.2		416.4		630.8
Education	1924.7		965.9		958.7
Others	24867.1		12138.2		12728.8
Less: Indirect Taxes on Consumption	7062.5		1954.3		5108.2
Less: Labor Income	30704.7		11156.4		19548.3
Age Reallocations	-2805.3		1899.3		-4704.7
Asset-Based Reallocations	-2913.8		-1167.4		-1746.4
Public Asset-Based Reallocations	-7969.1		-3700.8		-4268.2
Public Income on Assets	0.0		0.0		0.0
Less: Public Saving	7969.1		3700.8		4268.2
Private Asset-Based Reallocations	5055.3		2533.4		2521.9
Private Income on Assets	13198.8		3913.0		9285.8
Less: Private Saving	8143.5		1379.6		6763.9
Transfers	108.4		3066.7		-2958.3
Private (ROW)	108.4		18.7		89.8
Public (Rural-Urban)	0.0		3048.1		-3048.1

1995 National Account (Rural-Urban & Total)

GDP (Expenditure Approach)

NA	1995	Rural	Urban	
Gross Domestic Product				
Consumption		34961.9	15010.0	19951.9
Government Final Consumption Expenditure	7123.0	1489.4	5633.6	
Health	184.5	55.35	129.14	
Education	1246.2	518.42	727.78	
Others	5692.3	915.65	4776.66	
Private Final Consumption Expenditure	27838.9	13520.6	14318.3	
Health	1047.2	416.42	630.76	
Education	1924.7	965.92	958.73	
Others	24867.1	12138.2	12728.8	
Gross Investment		23586.6	7126.0	16460.6
Gross Fixed Capital Formation	20554.0	5961.87	14592.13	
Increase in Stocks	3032.6	1164.09	1868.51	
Net Export		904.0	155.7	748.3
Exports of Goods and Services				
Less: Imports of Goods and Services				
Gross Domestic Product		59452.5	22291.7	37160.8

1995 National Account (Rural-Urban & Total)

GDP (Income Approach)

NA	1995	Rural	Urban
Gross Domestic Income			
Compensation of Employee		27895.8	17532.9
Operating Surplus		16148.6	11586.8
Indirect Taxes Less Subsidies		7811.8	5559.5
Indirect taxes	8139.5	2252.3	5887.2
Less Subsidies	327.8	0.0	327.8
Consumption of Capital (Depreciation)		7596.3	5529.7
Gross Domestic Income		59452.5	40208.9
Gross Domestic Product		59452.5	37160.8

1995 National Account (Rural-Urban & Total)

R-U NA	1995	Rural	Urban
Gross Domestic Product			
Consumption	34961.9	15010.0	19951.9
Government Final Consumption Expenditure	7123.0	1489.4	5633.6
Health	184.5	55.35	129.14
Education	1246.2	518.42	727.78
Others	5692.3	915.65	4776.66
Private Final Consumption Expenditure	27838.9	13520.6	14318.3
Health	1047.2	416.42	630.76
Education	1924.7	965.92	958.73
Others	24867.1	12138.2	12728.8
Gross Investment	23586.6	7126.0	16460.6
Gross Fixed Capital Formation	20554.0	5961.87	14592.13
Increase in Stocks	3032.6	1164.09	1868.51
Net Export	904.0	155.7	748.3
Exports of Goods and Services			
Less: Imports of Goods and Services			
Less Net Rural subsidy to Urban	0.0	3048.1	-3048.1
Gross Domestic Product	59452.5	22291.7	37160.8
Rural-Urban GDP	59452.5	19243.6	40208.9
Gross Domestic Income	59452.5	19243.6	40208.9

Results: 1995

1995 Urban & Rural

Data Source

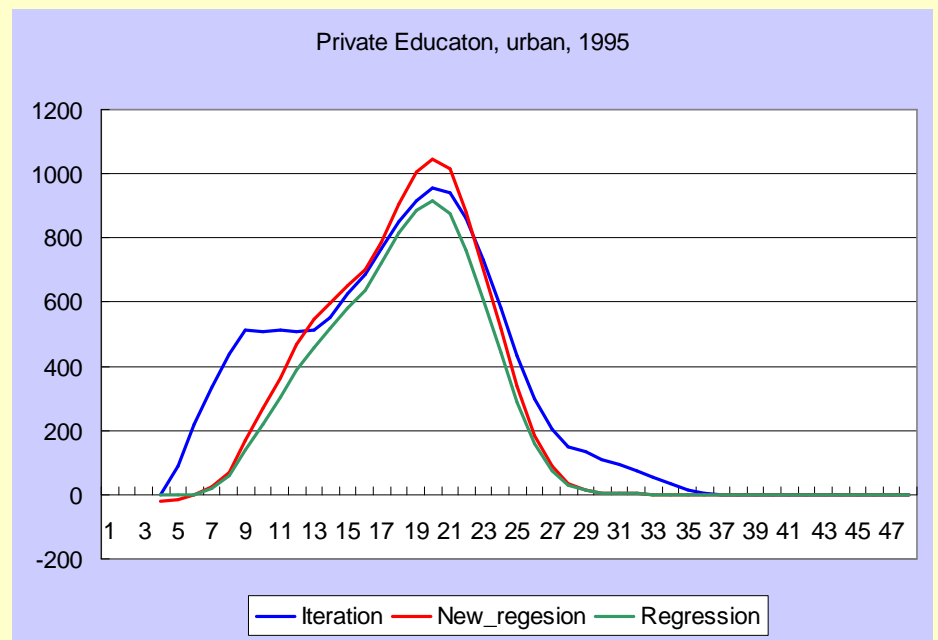
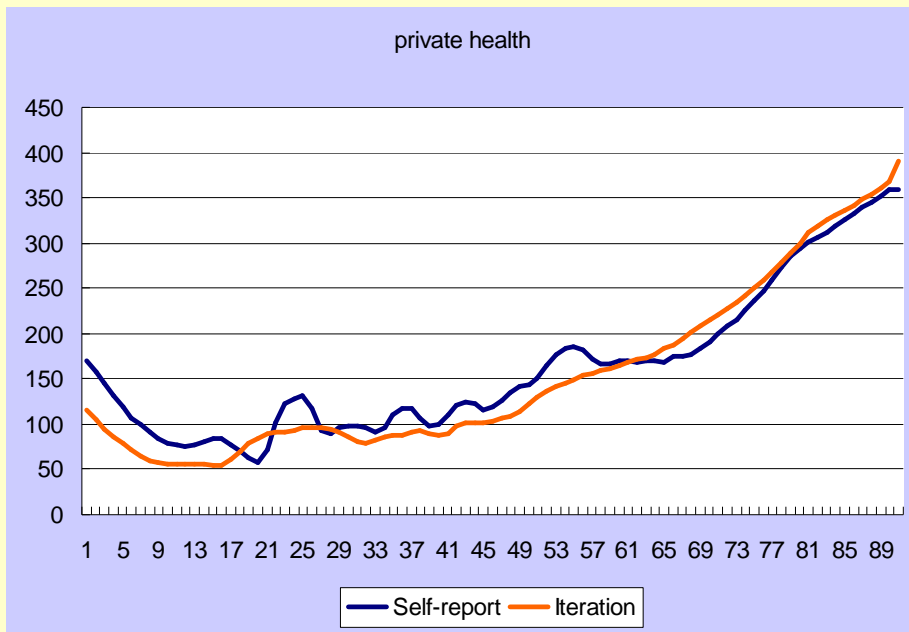
- Chinese Household Income Project (CHIP) data
 - information concerning personal character, Individual income, Saving and assets data at the household level, Expenditure data at the household level,
 - Separated survey between urban and rural
- National Health Service survey
- 1995 Statistical yearbook
- Population census data
- Some specific yearbooks

Recent Progress

- Try now profile methodology
- Estimation of assets reallocation
- Aggregate control under now NIPA

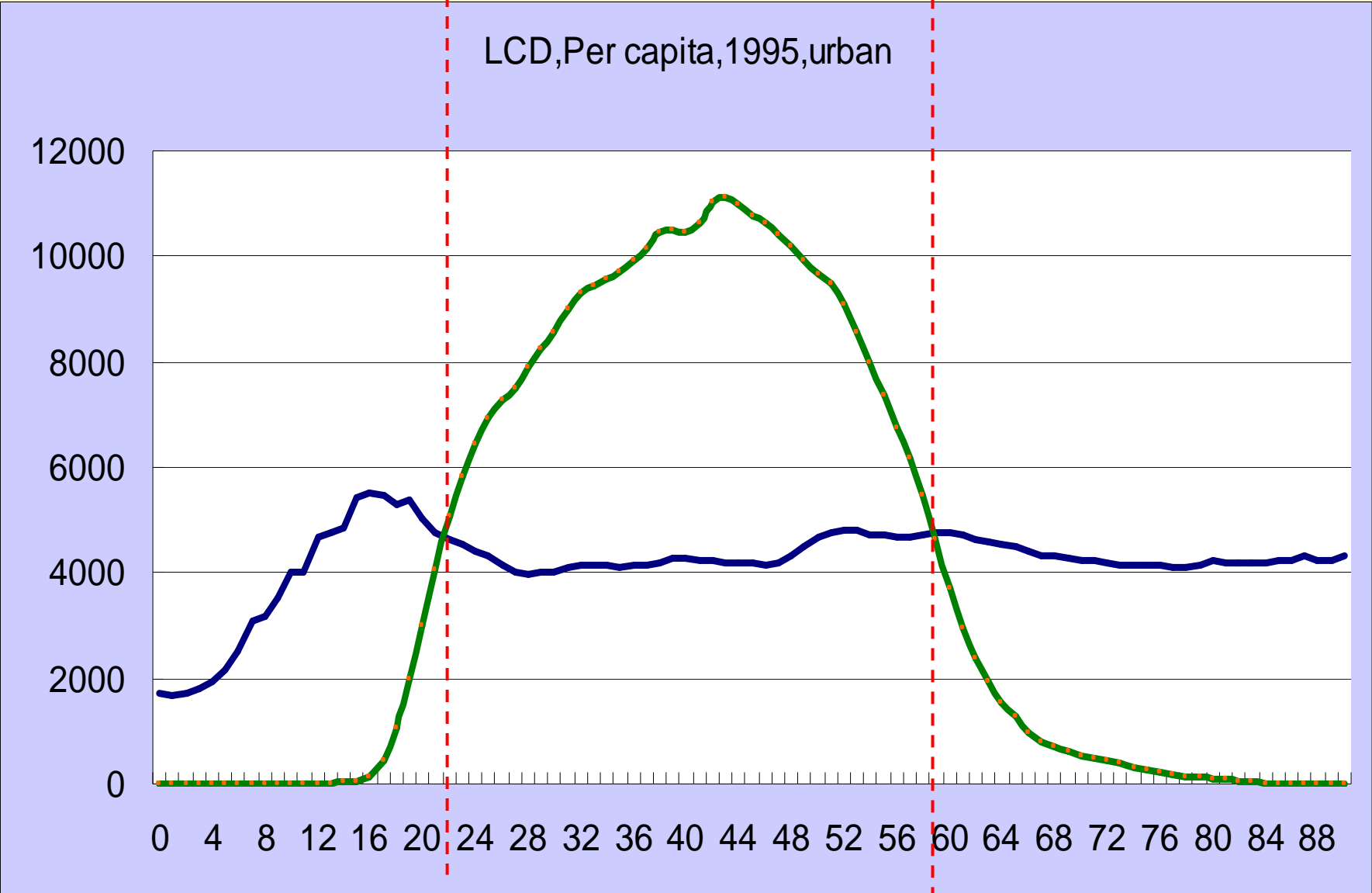
Methodology

- Iteration and regression method match well



China, urban,LCD,1995

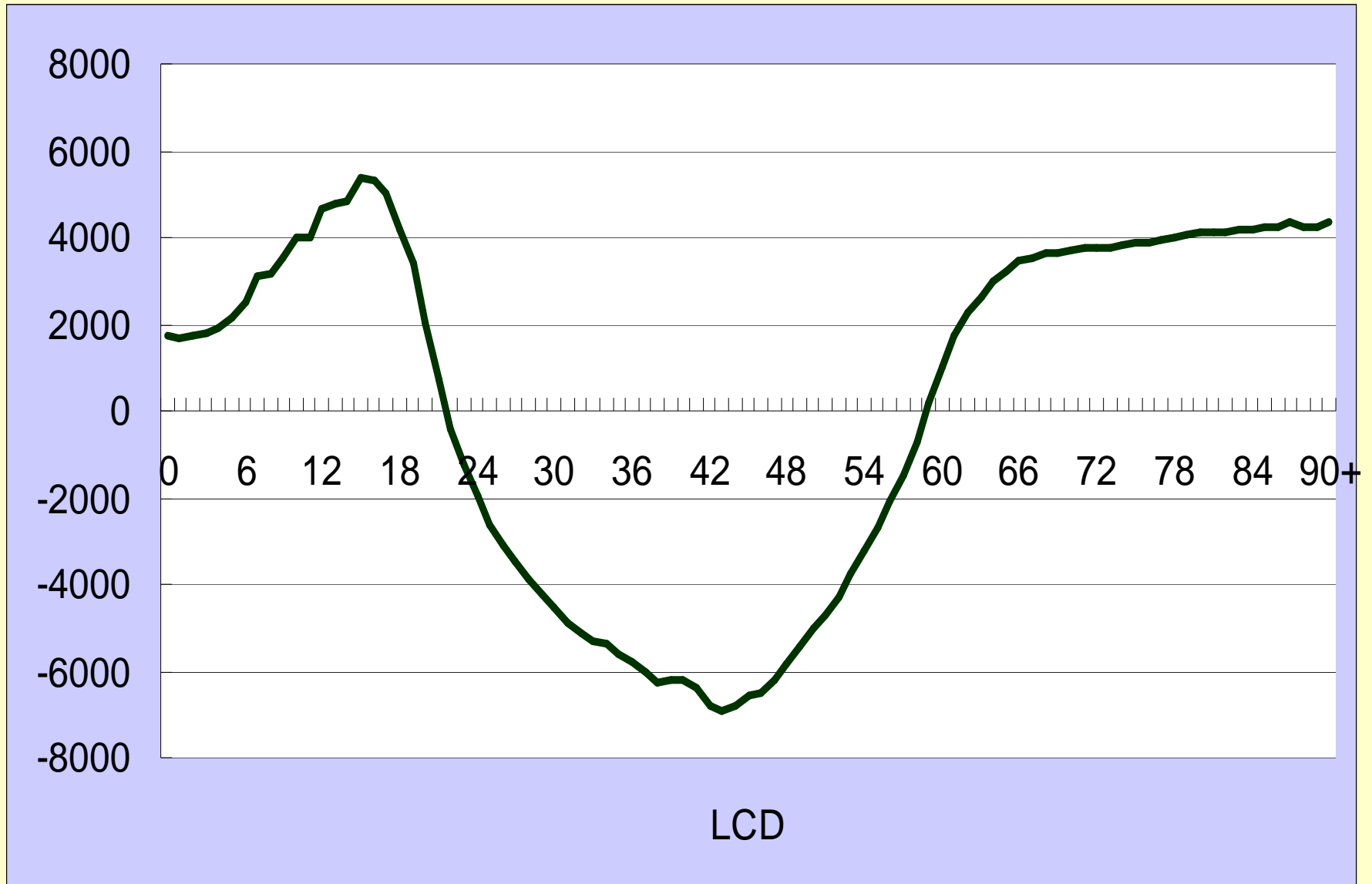
LCD,Per capita,1995,urban



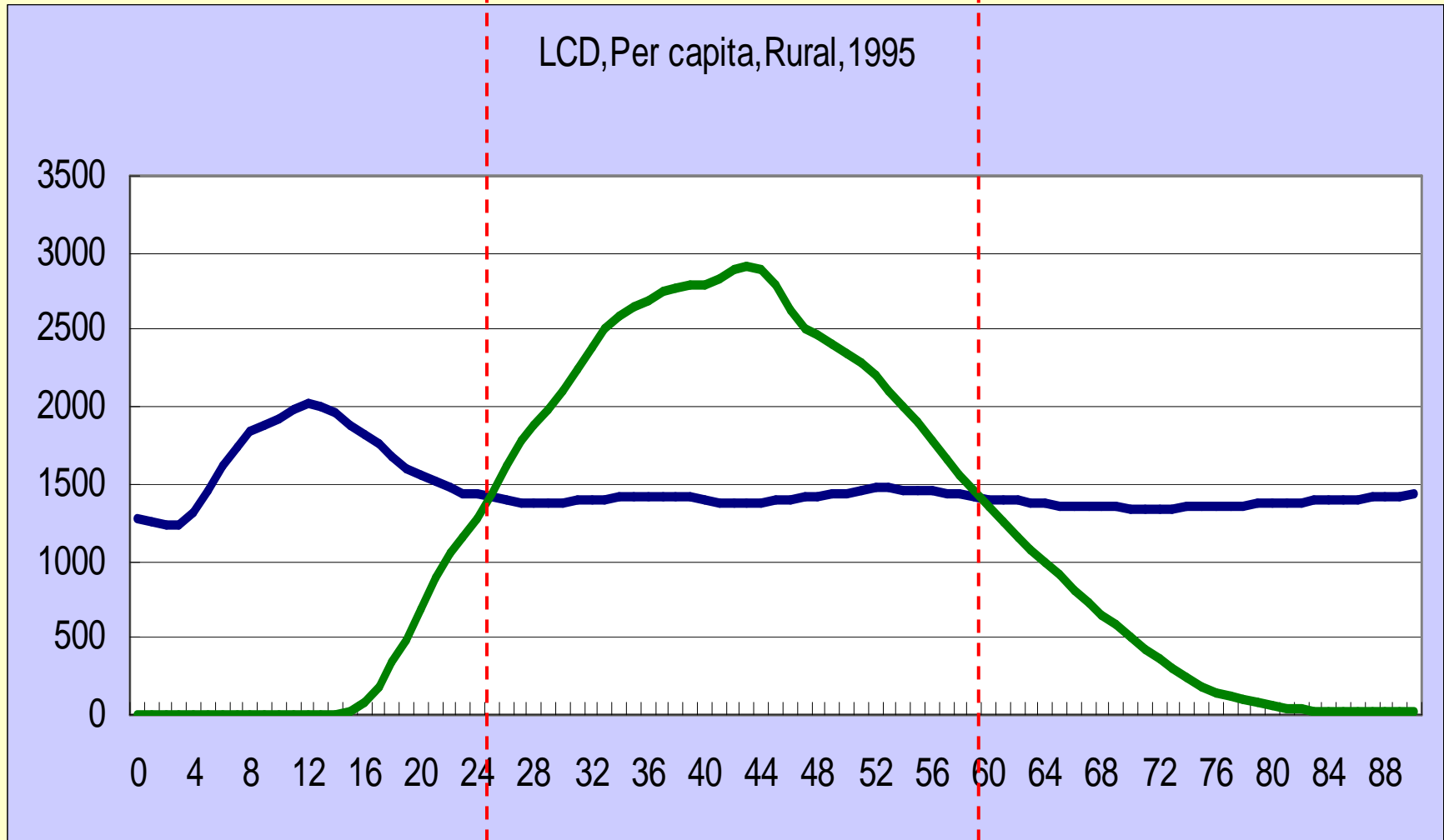
22

59

China, urban,LCD,1995



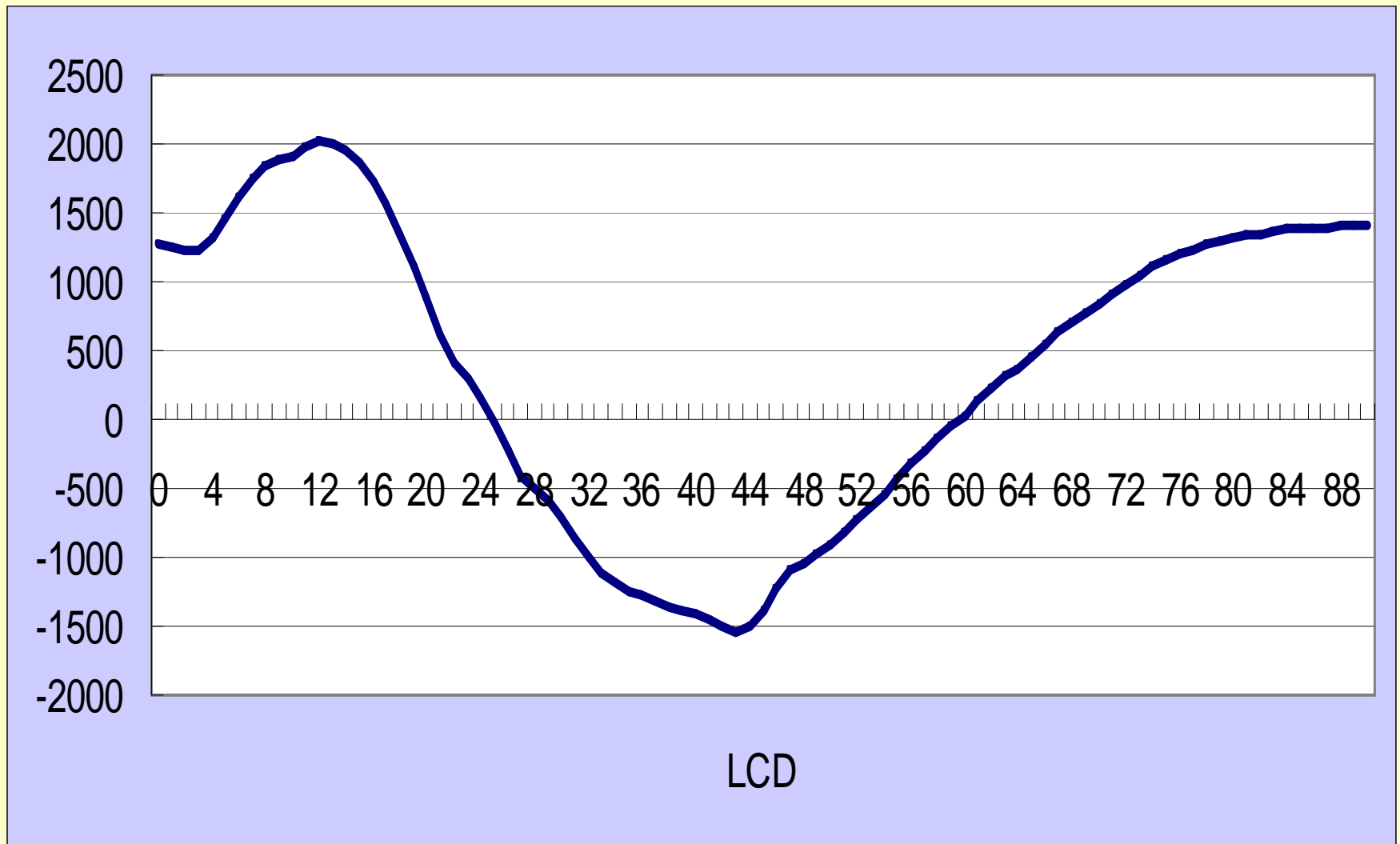
China, rural, LCD, 1995



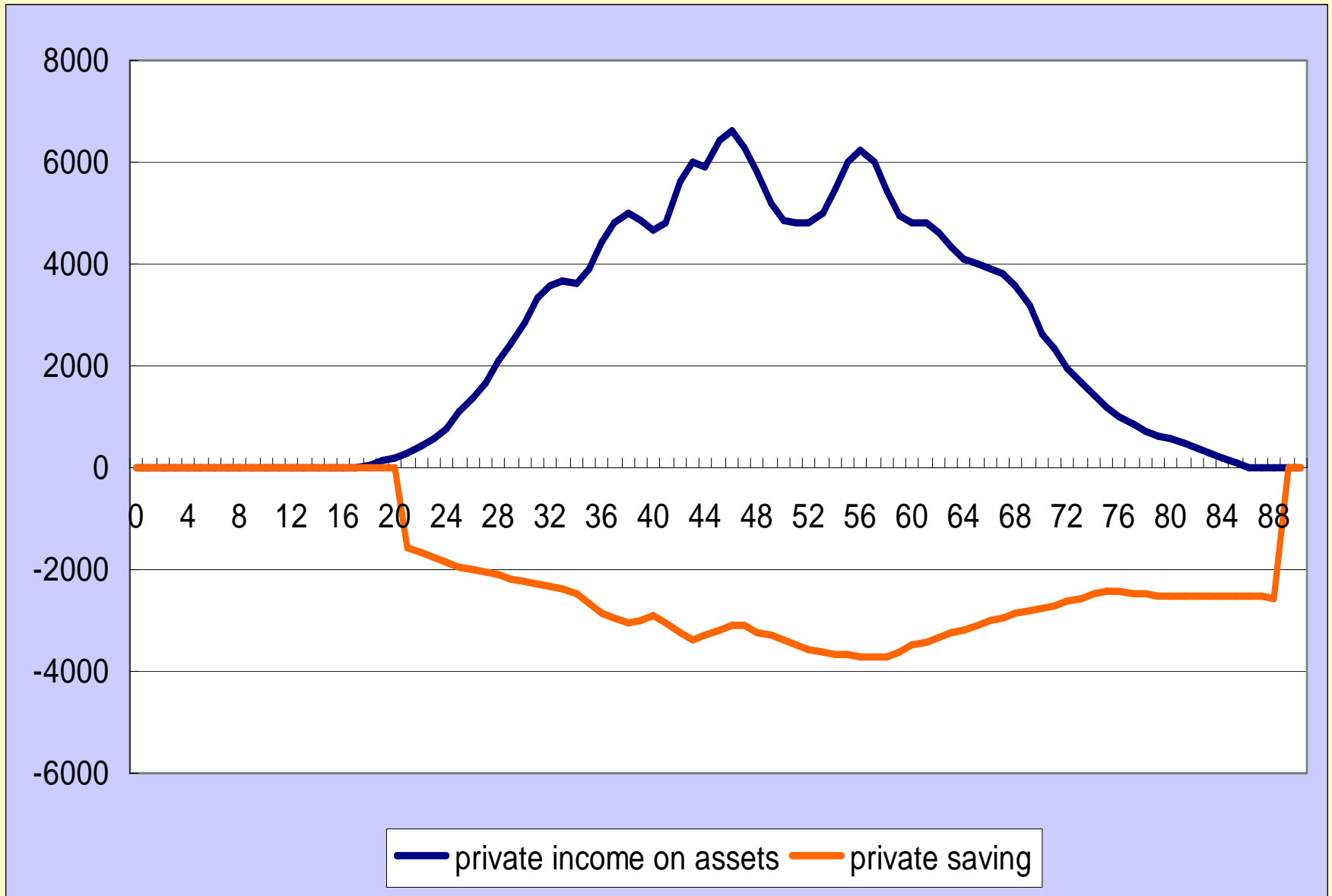
25

60

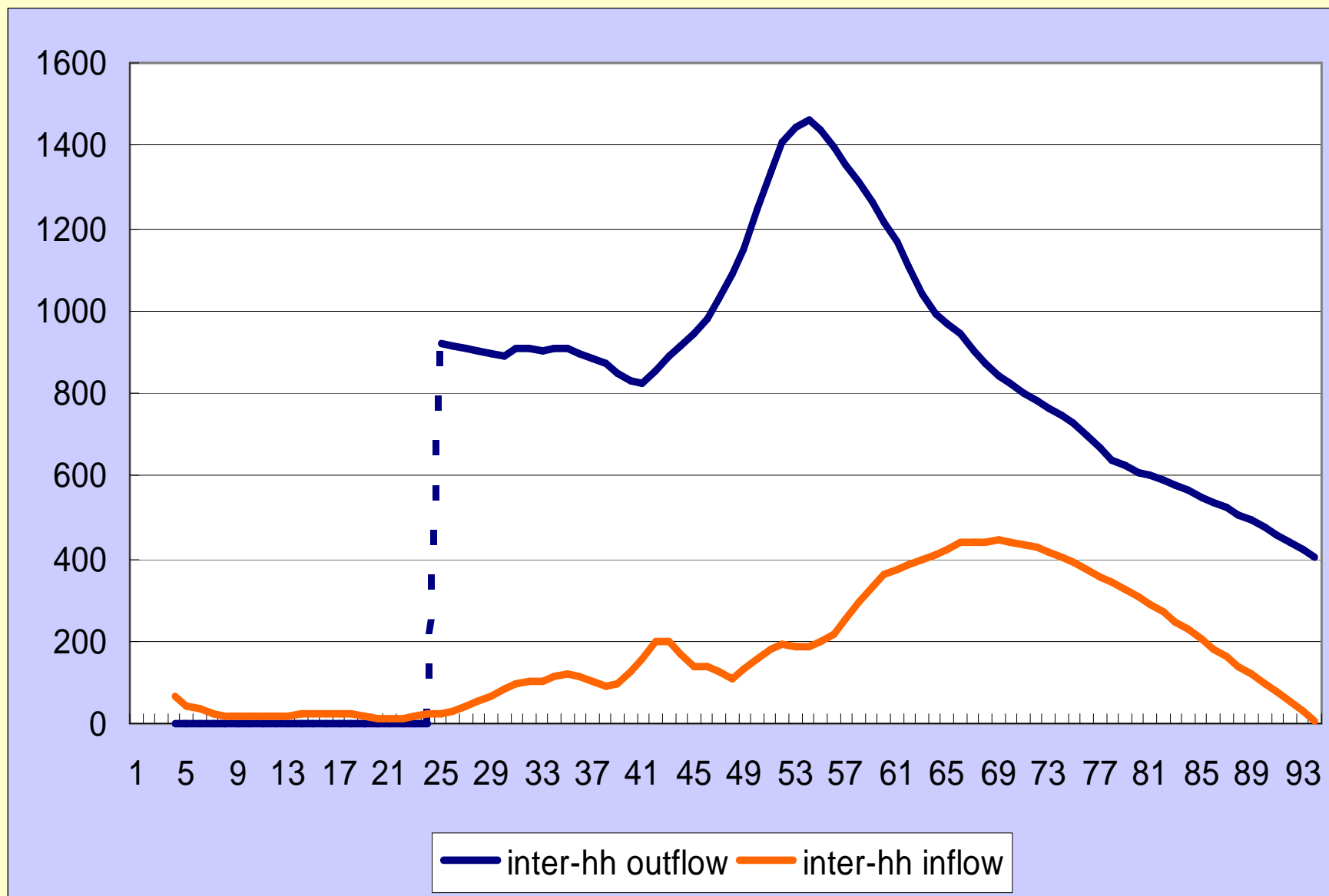
China, rural, LCD, 1995



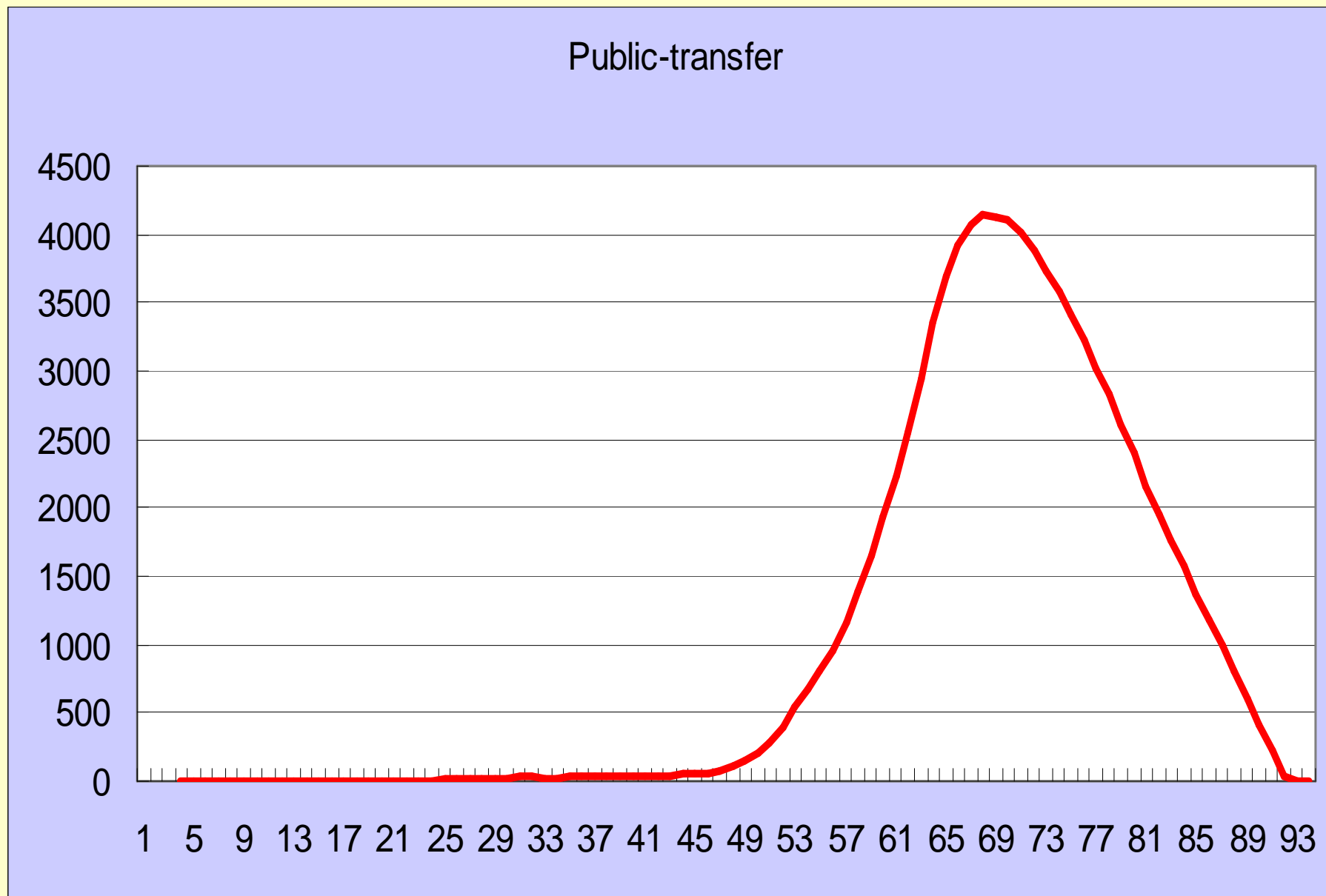
China, urban, Private asset reallocation 1995



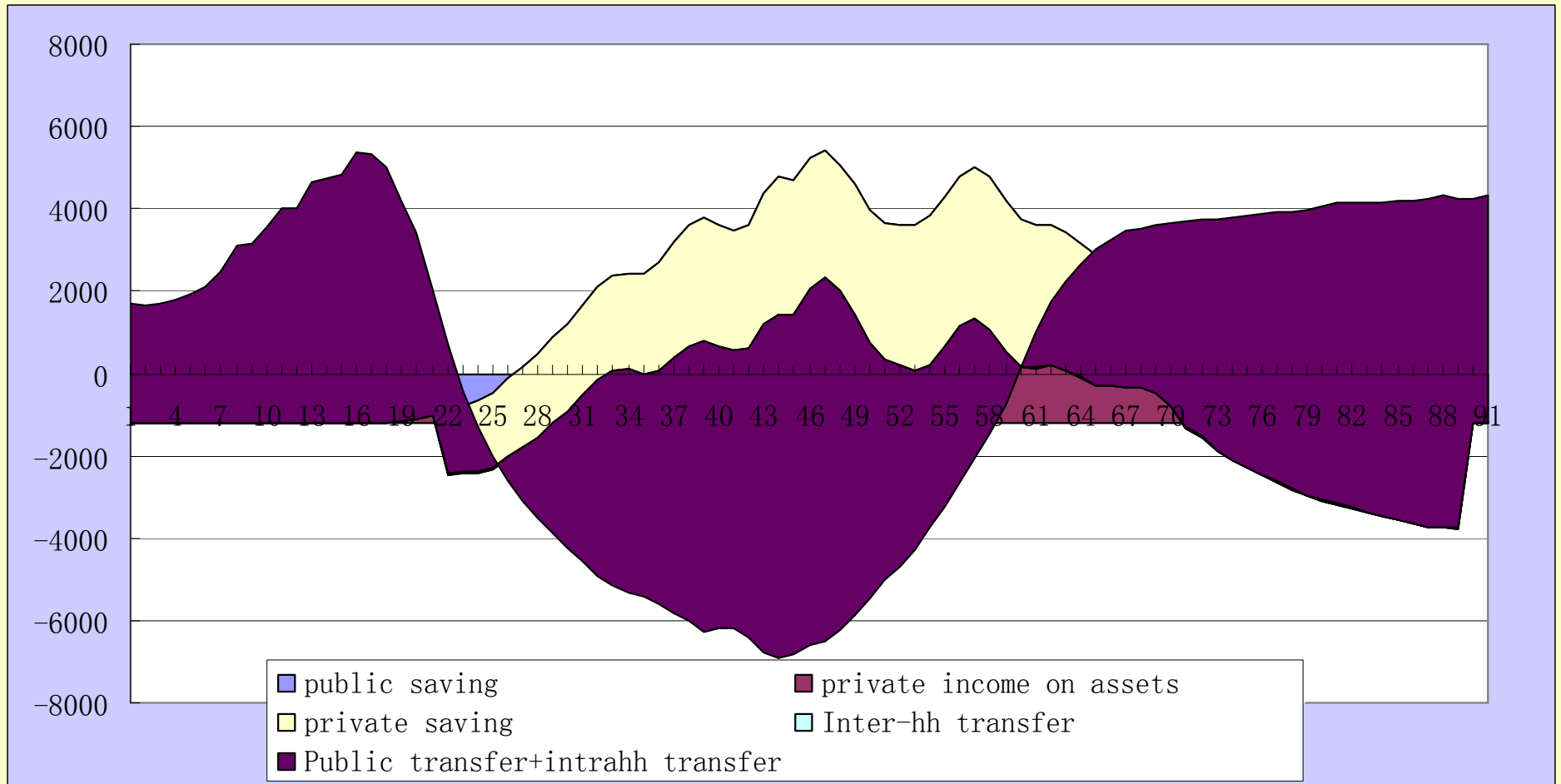
China, urban, Private transfers 1995



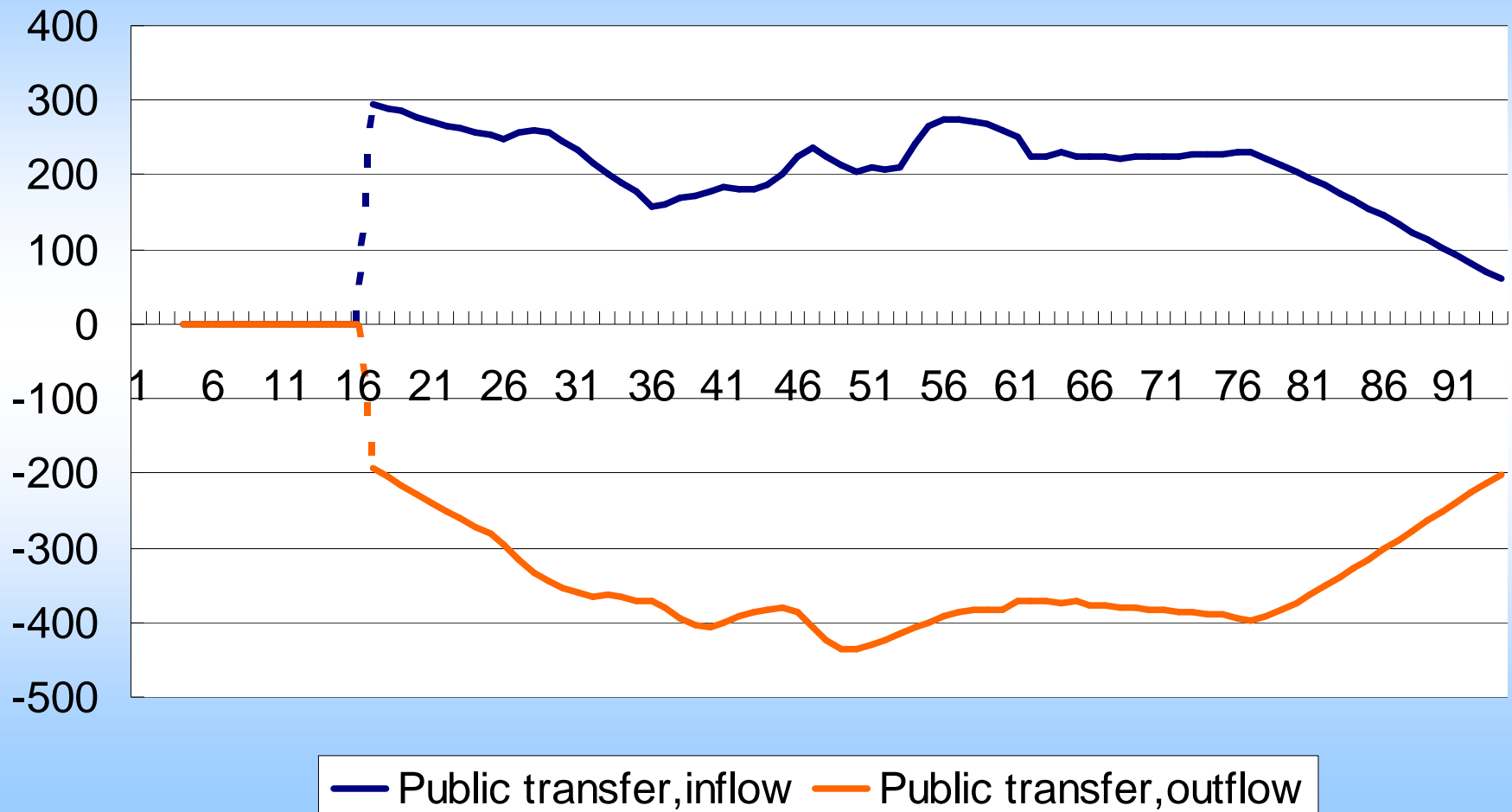
China, urban, Public transfers 1995



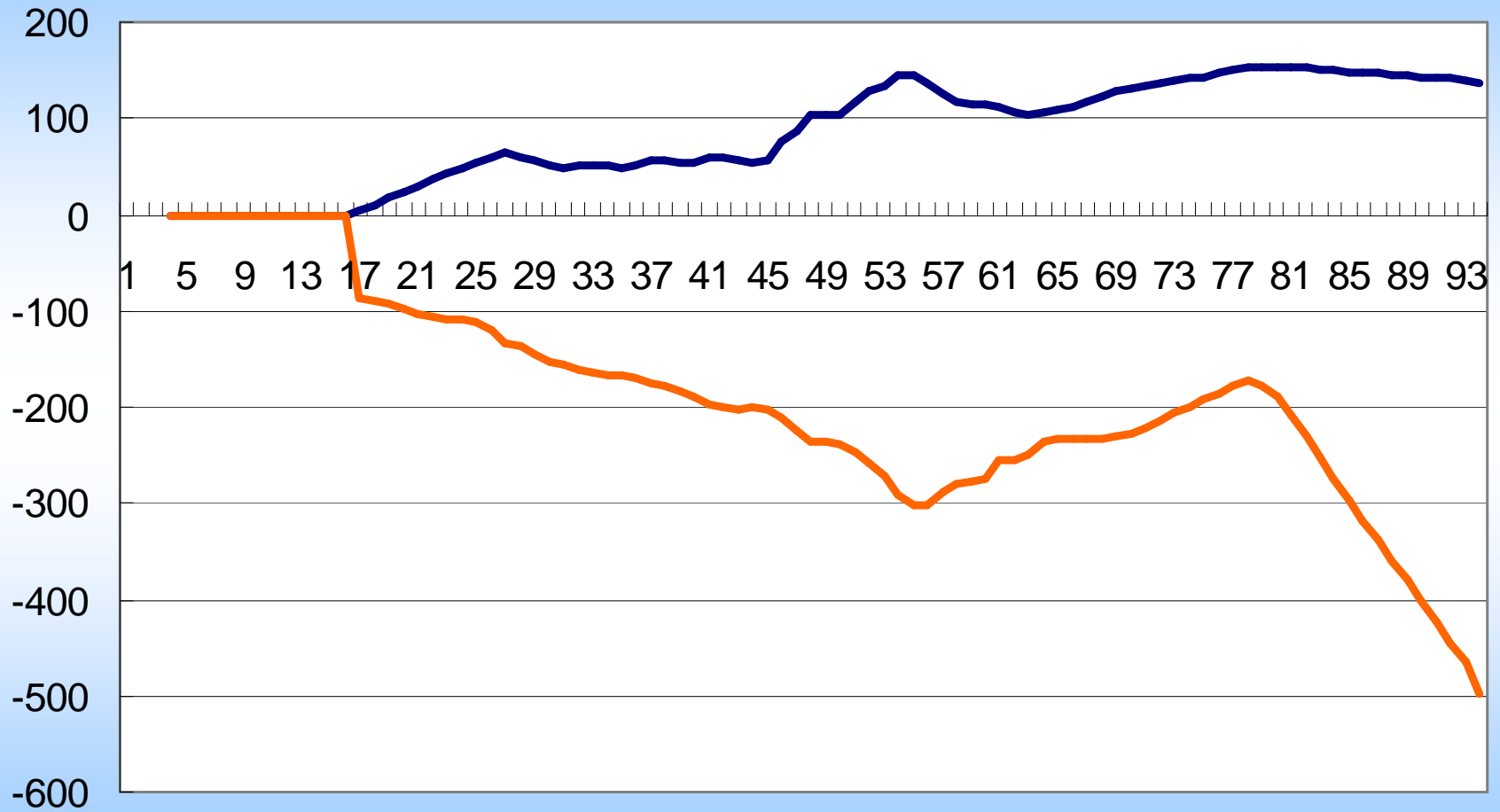
China, urban, component of LCD



Public Transfer, rural, 1995, per capita, China

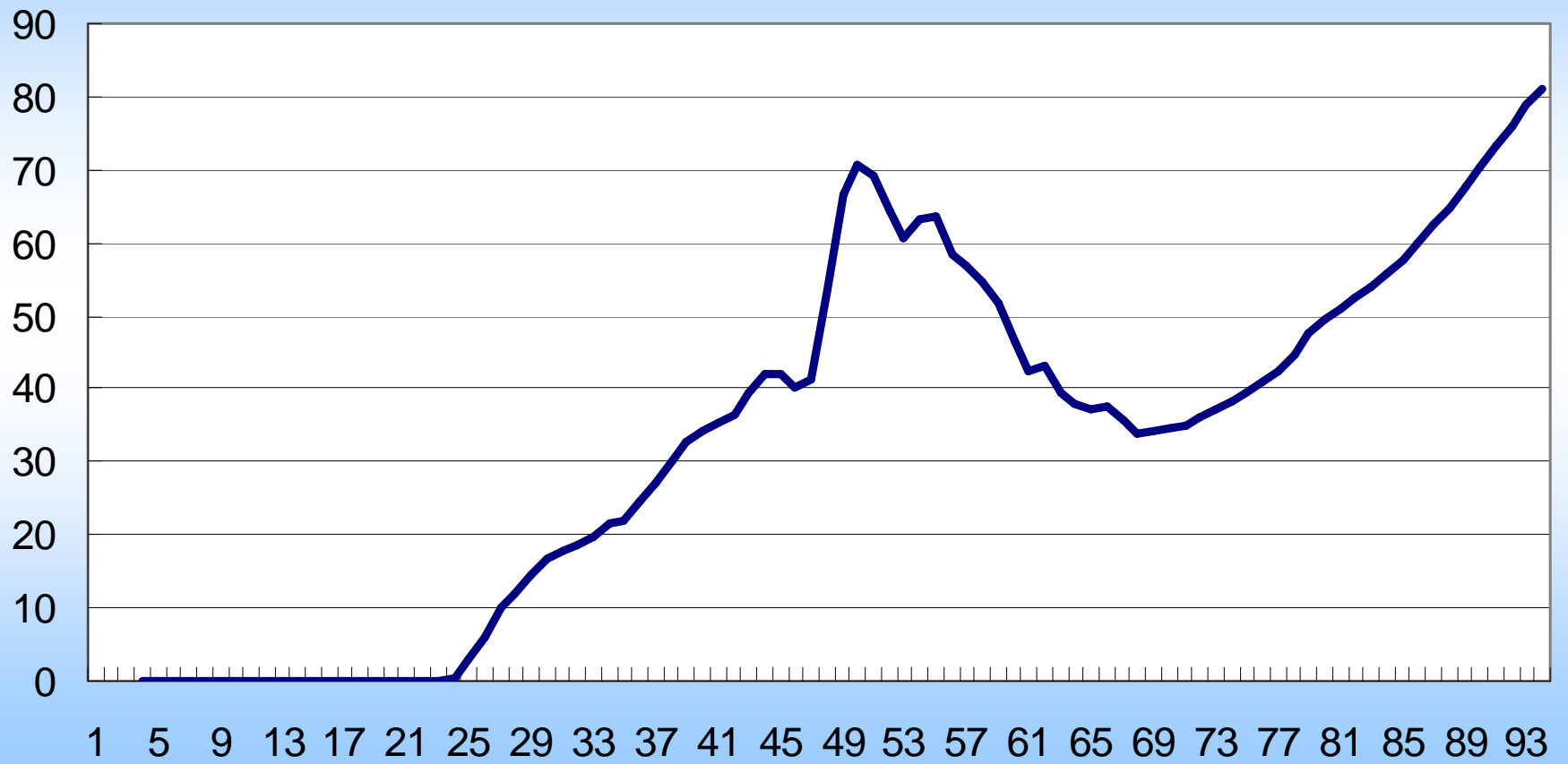


Inter household transfers, 1995, per capita, Rural, China

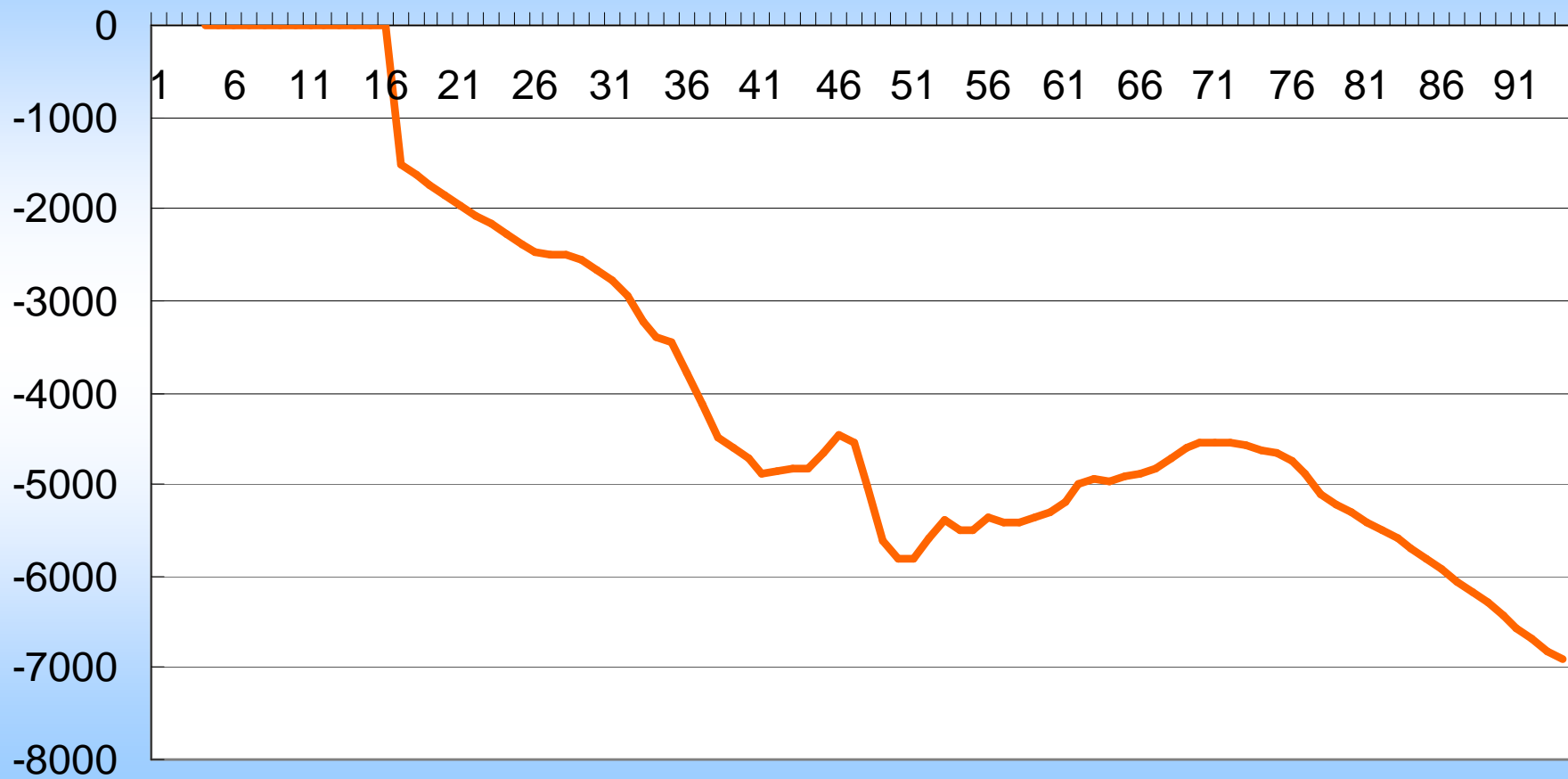


— Inter household transfer, inflow — Inter household transfer, outflow

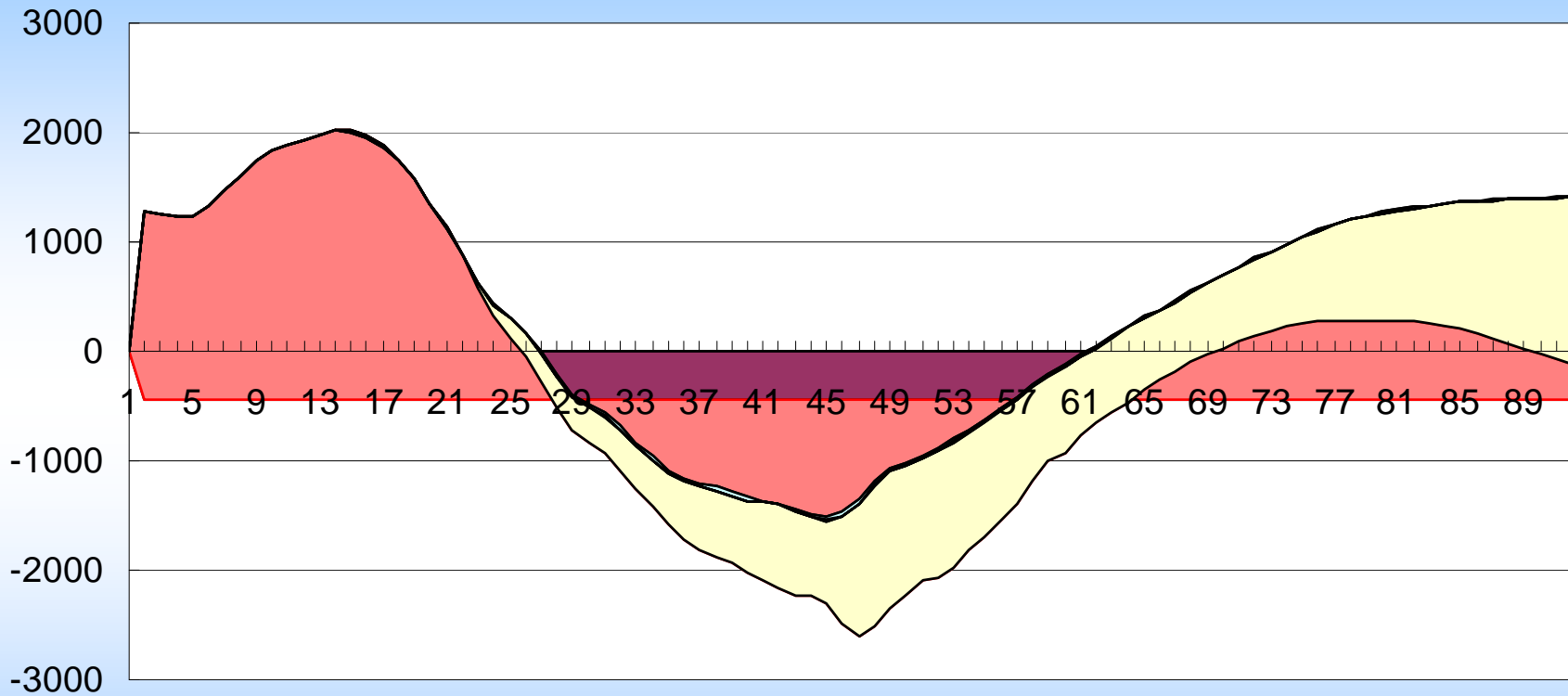
Assets Income, rural,China,1995, per capita



Private saving, 1995, per capita, rural, China



Component of LCD,rural,1995,per capita,China



- Public assets income
- Public transfe+inter-hh transfer
- Private saving
- Public saving
- Private asset income
- Private transfer

Thanks!

