

# Workshop: Longitudinal NTA analysis

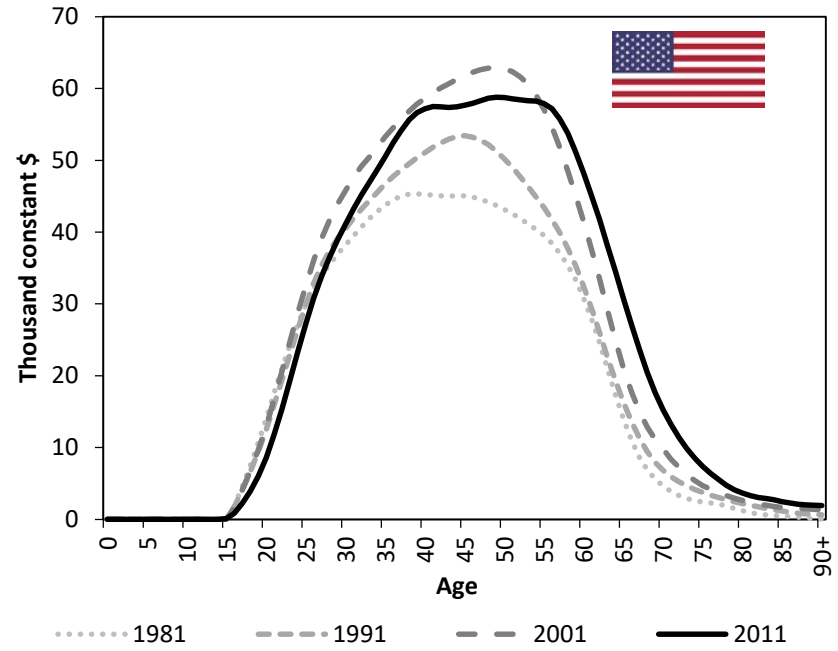
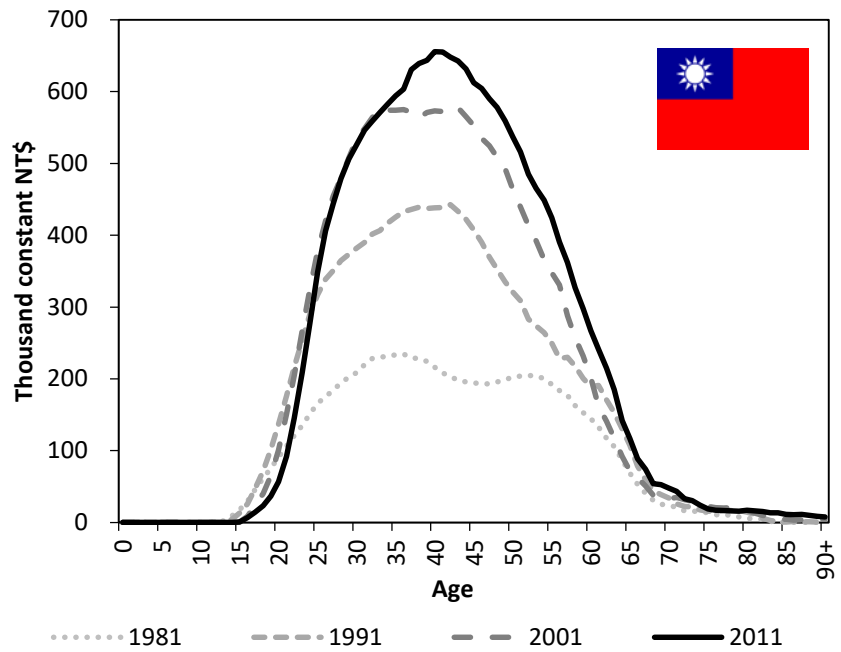
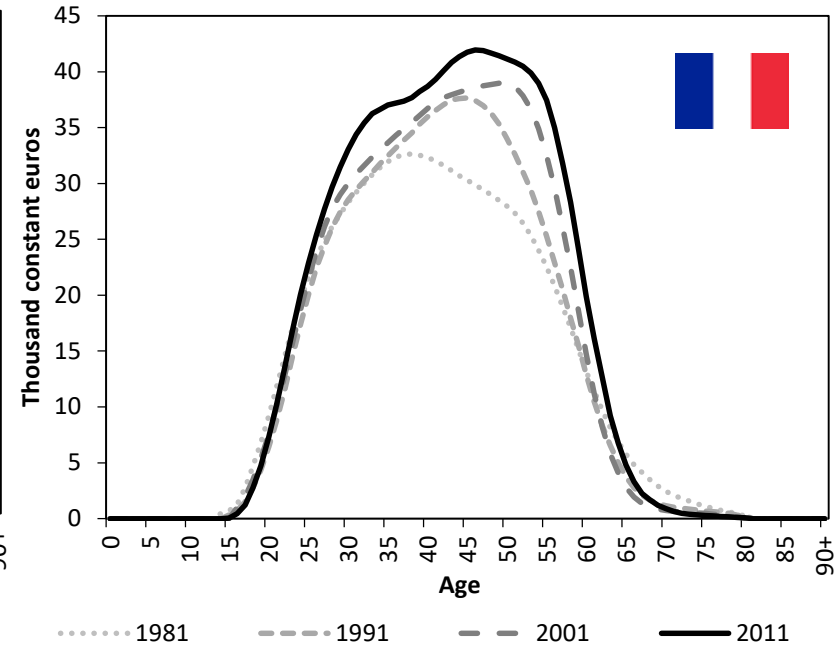
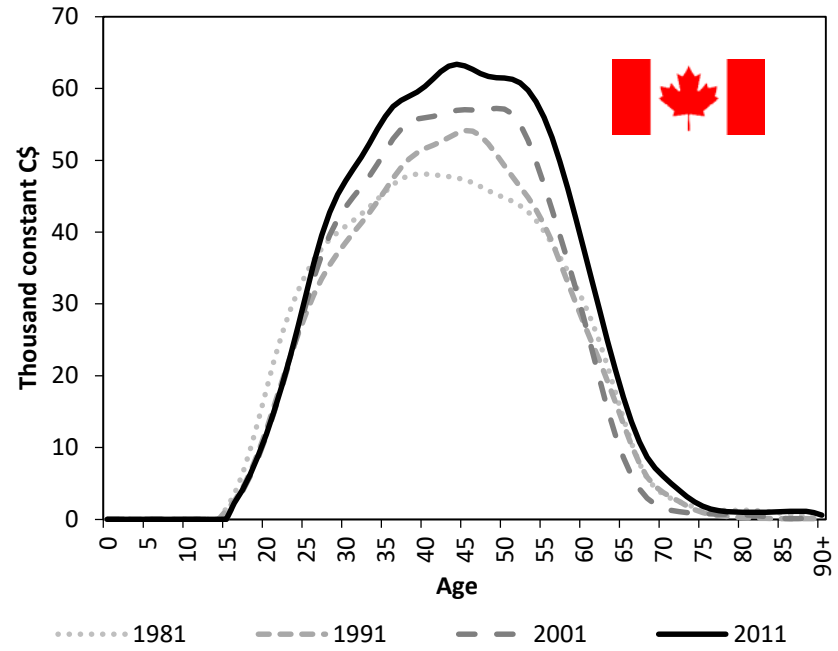
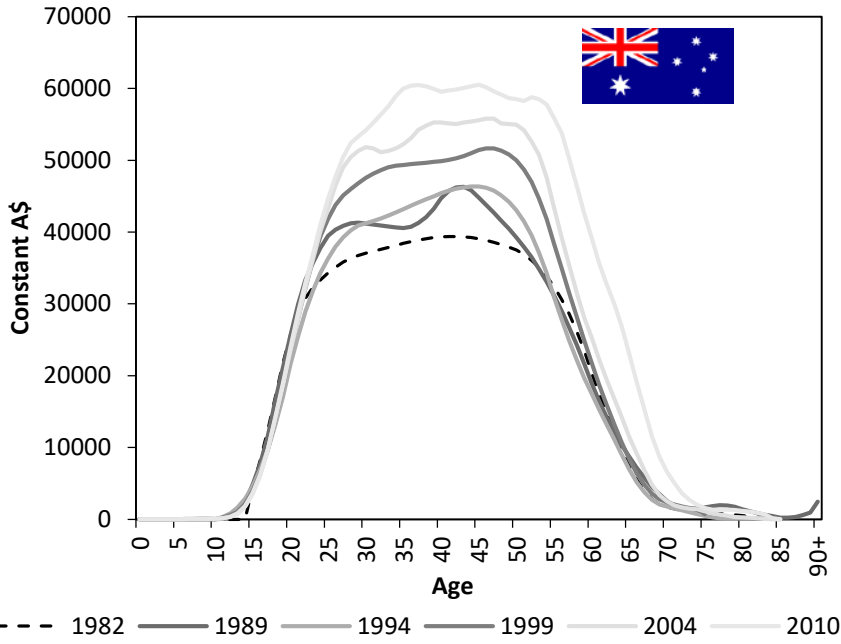
Julien Navaux, University of Ottawa  
NTA Canada and France

# Members

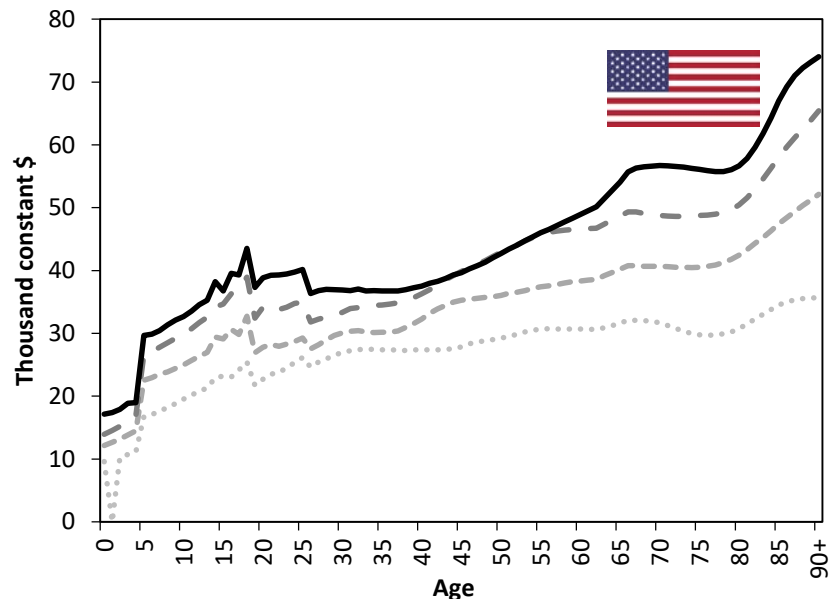
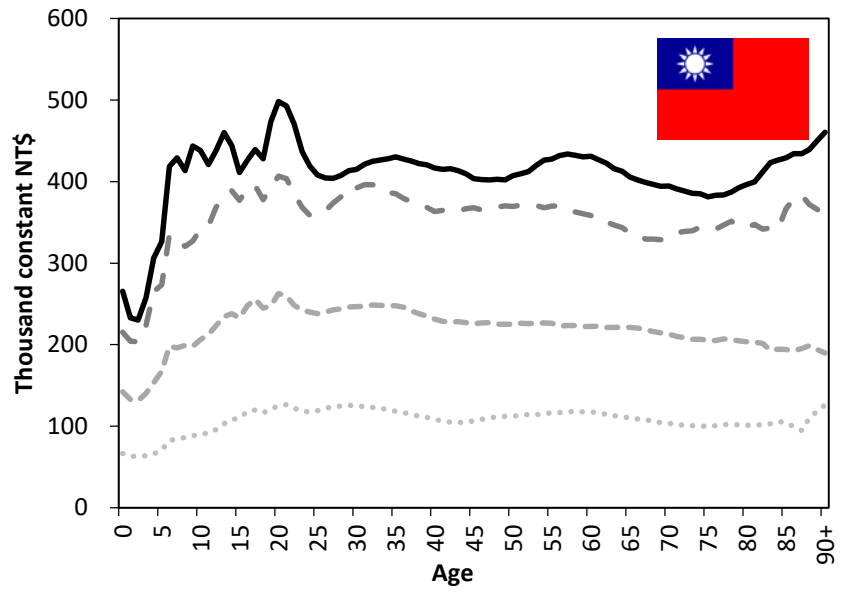
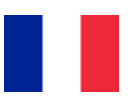
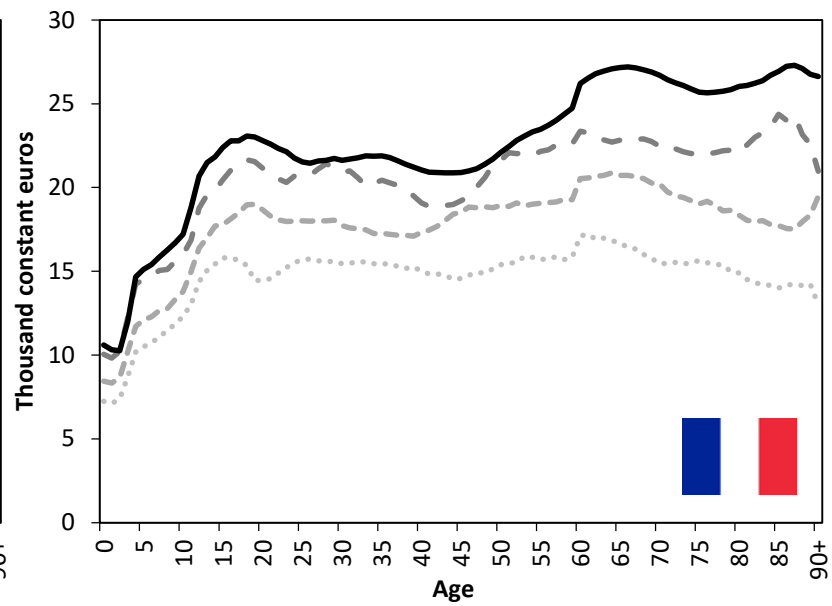
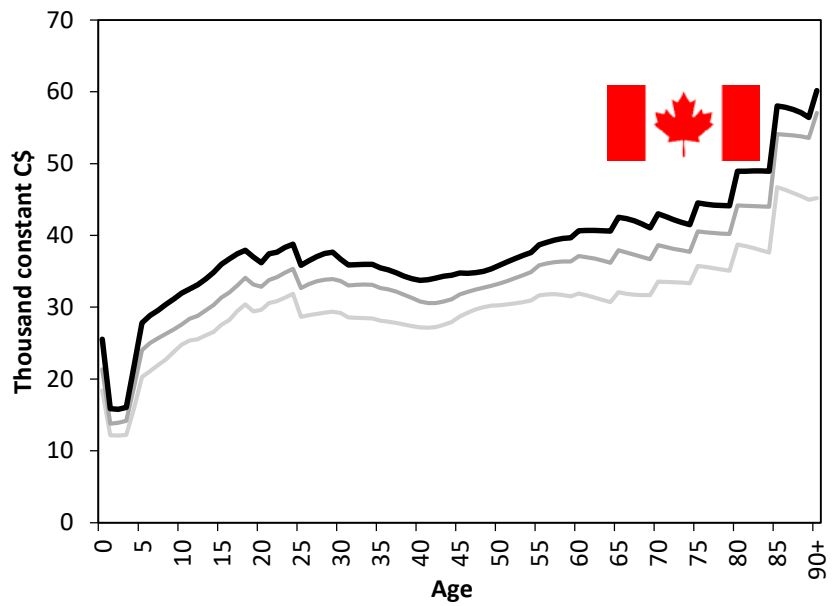
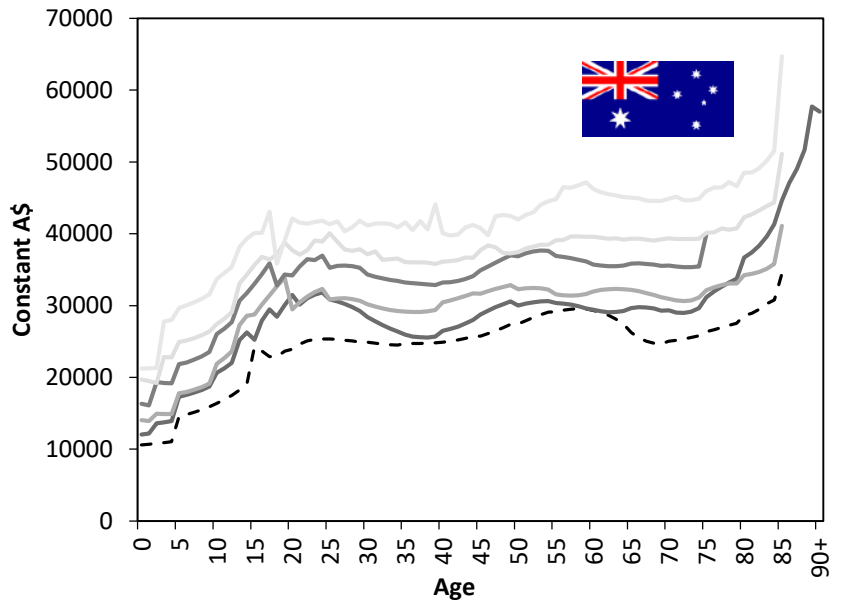
- Australia, Canada, France, Mexico, Taiwan, United States
- New members are welcome!
  - UK, Spain and new friends.

# Lifecycle deficit age profiles

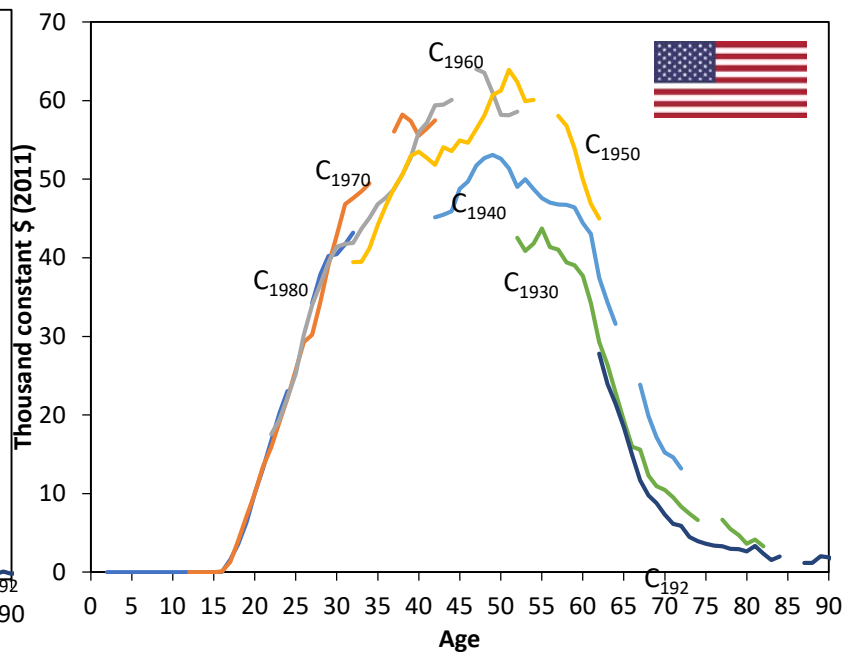
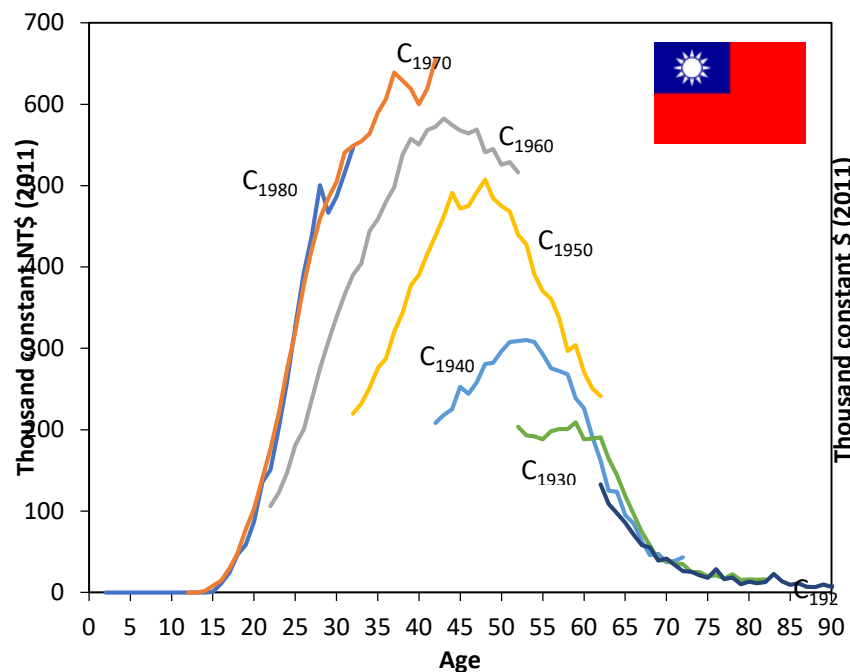
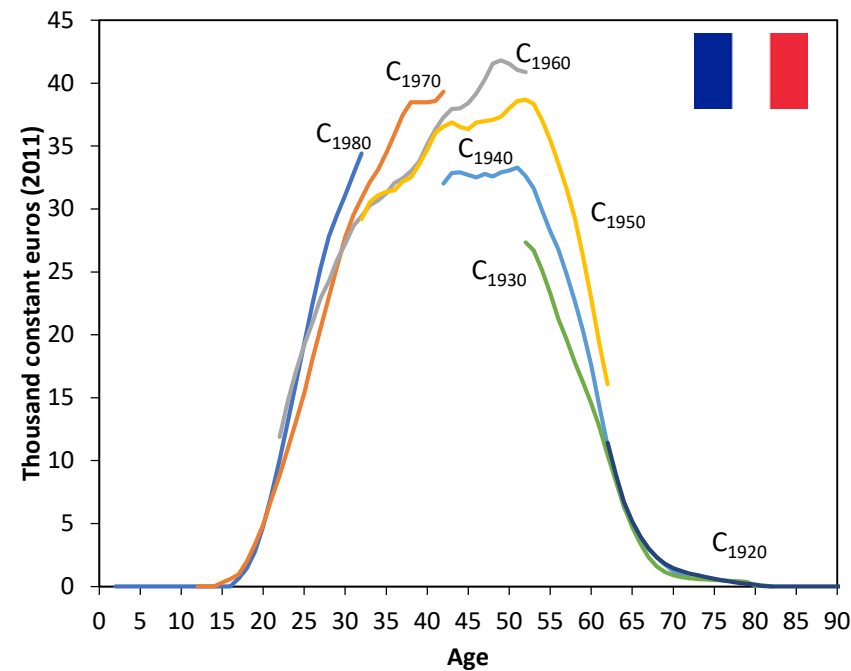
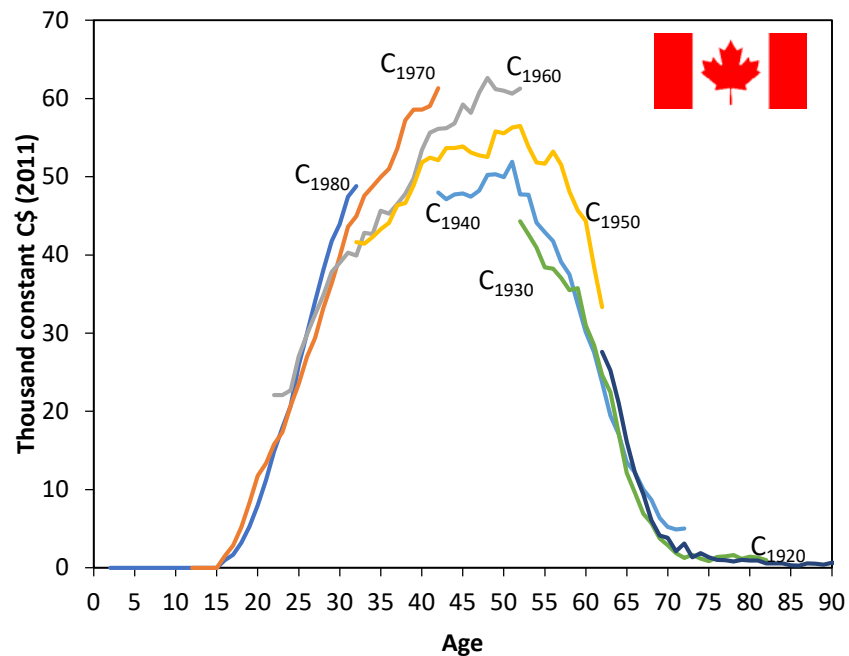
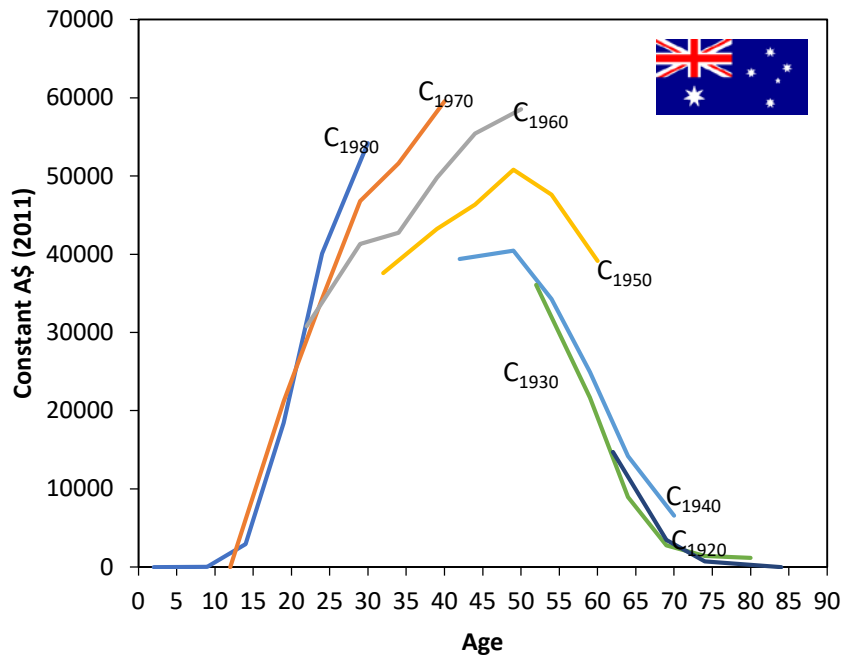
- Australia: 1982-2010
- Canada: 1981-2011 (YL), 1998-2011 (C)
- France: 1981-2011
- Taiwan: 1981-2011
- United States: 1981-2011 (break in 2004 and 2005)



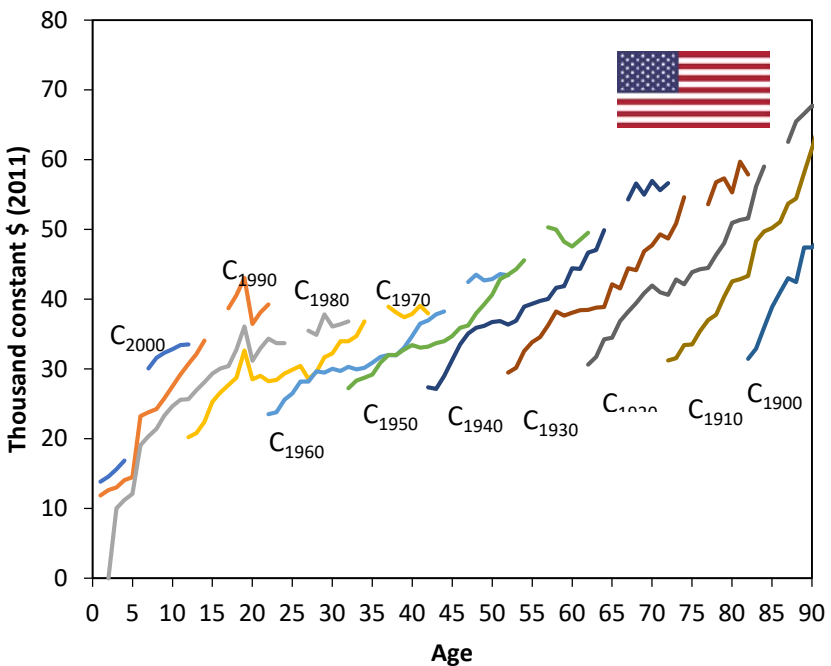
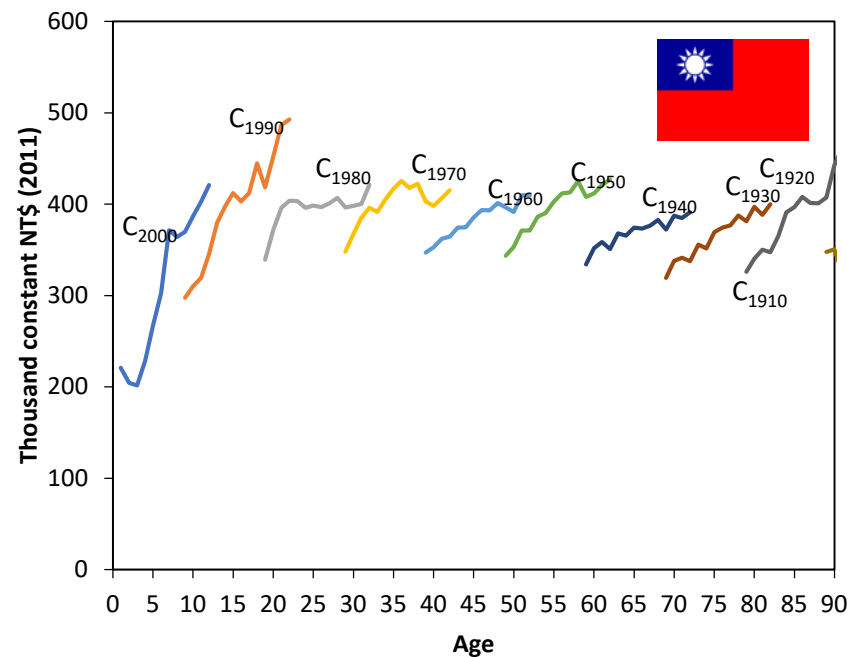
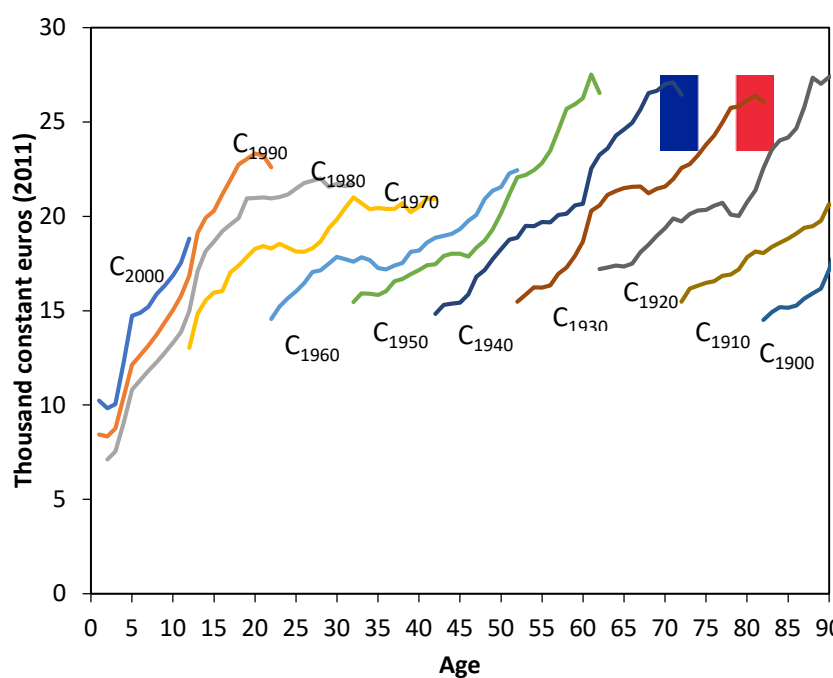
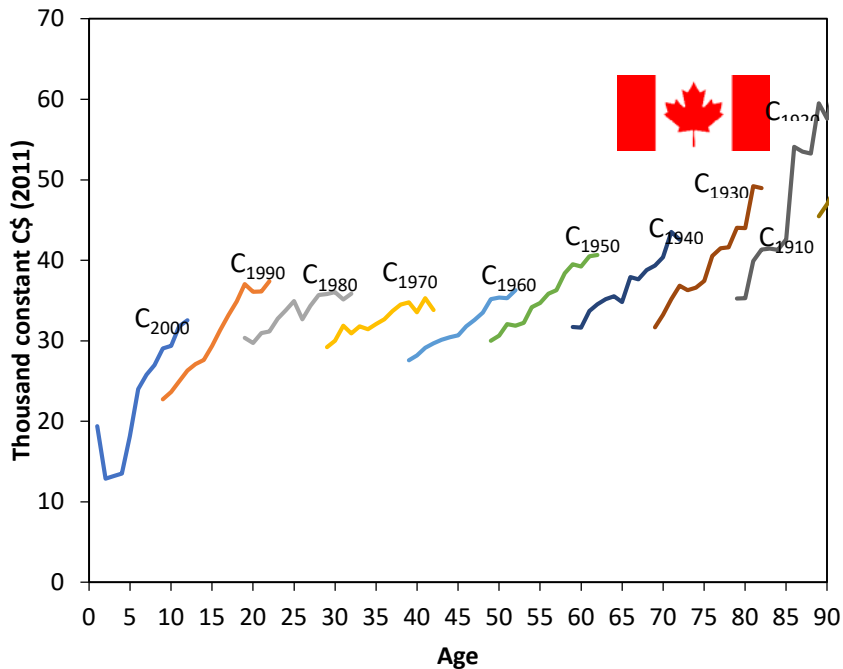
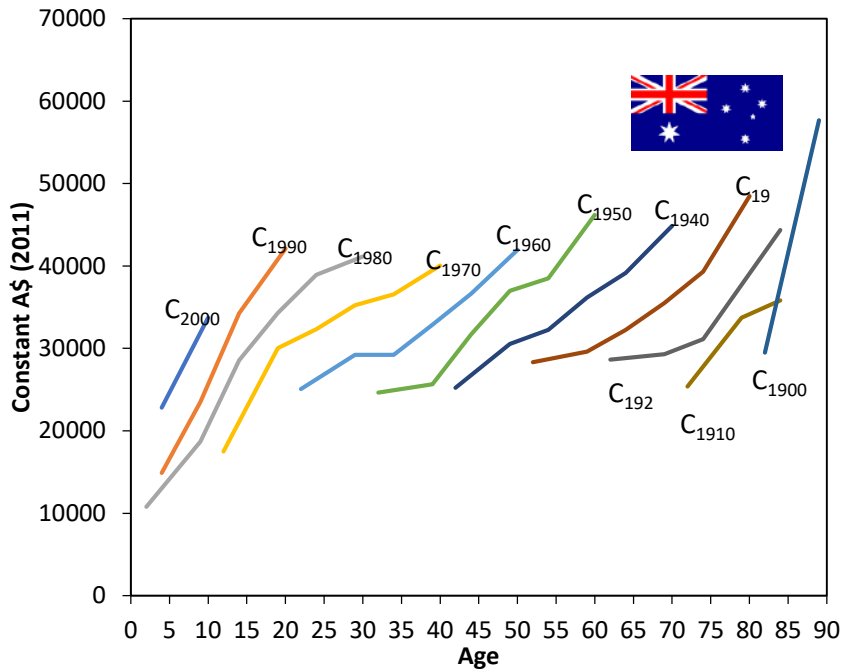
Age profiles of labour income, per capita constant value



Age profiles of consumption,  
per capita constant value



Cohort profiles of labour income, per capita constant value



Cohort profiles of consumption, per capita constant value