

A Tour Through Uruguay NTA

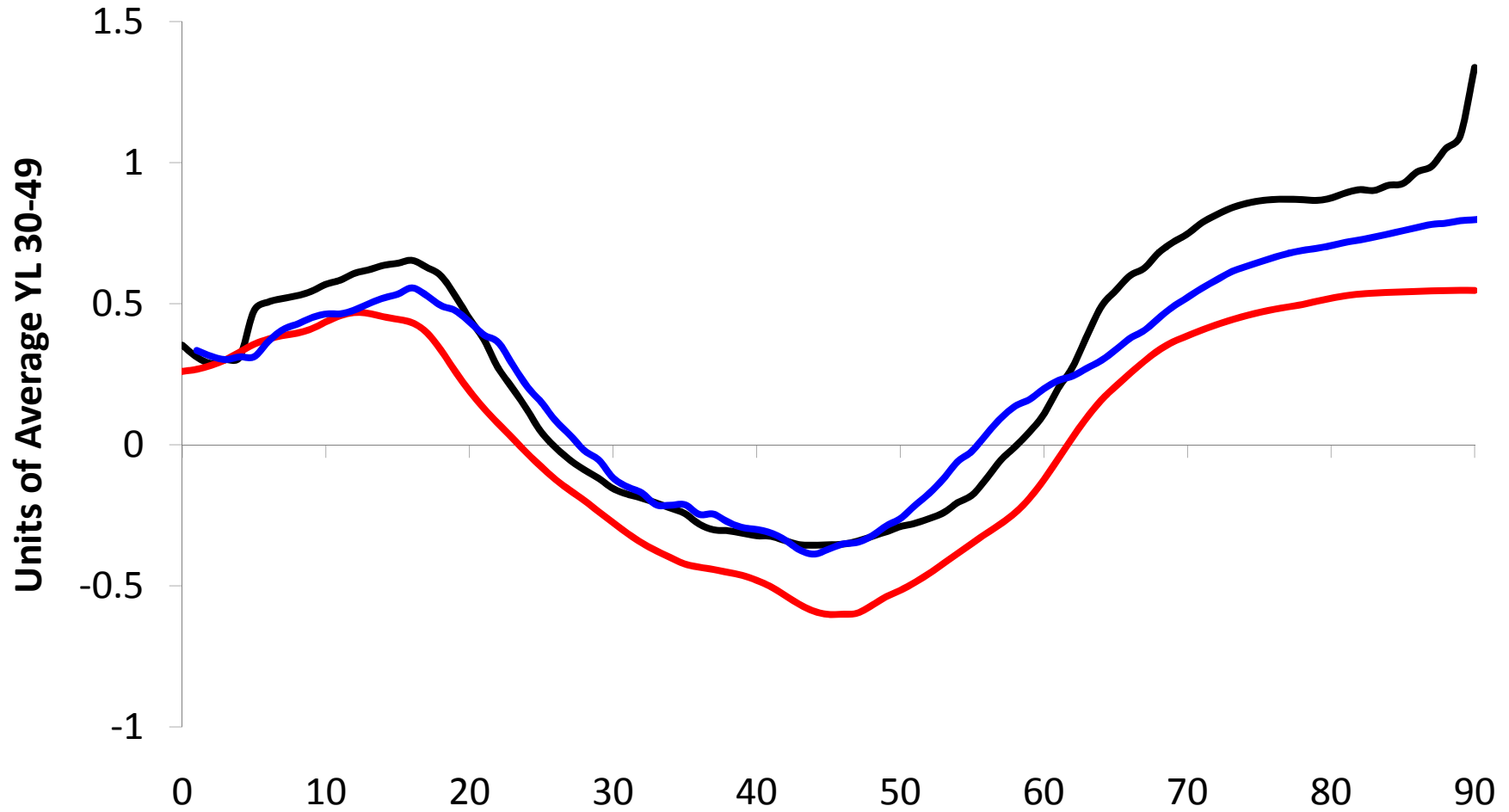
Year 2006

Uploaded to NTA Wiki April 27,2010

(US Team NTA meeting 5/13/2010)

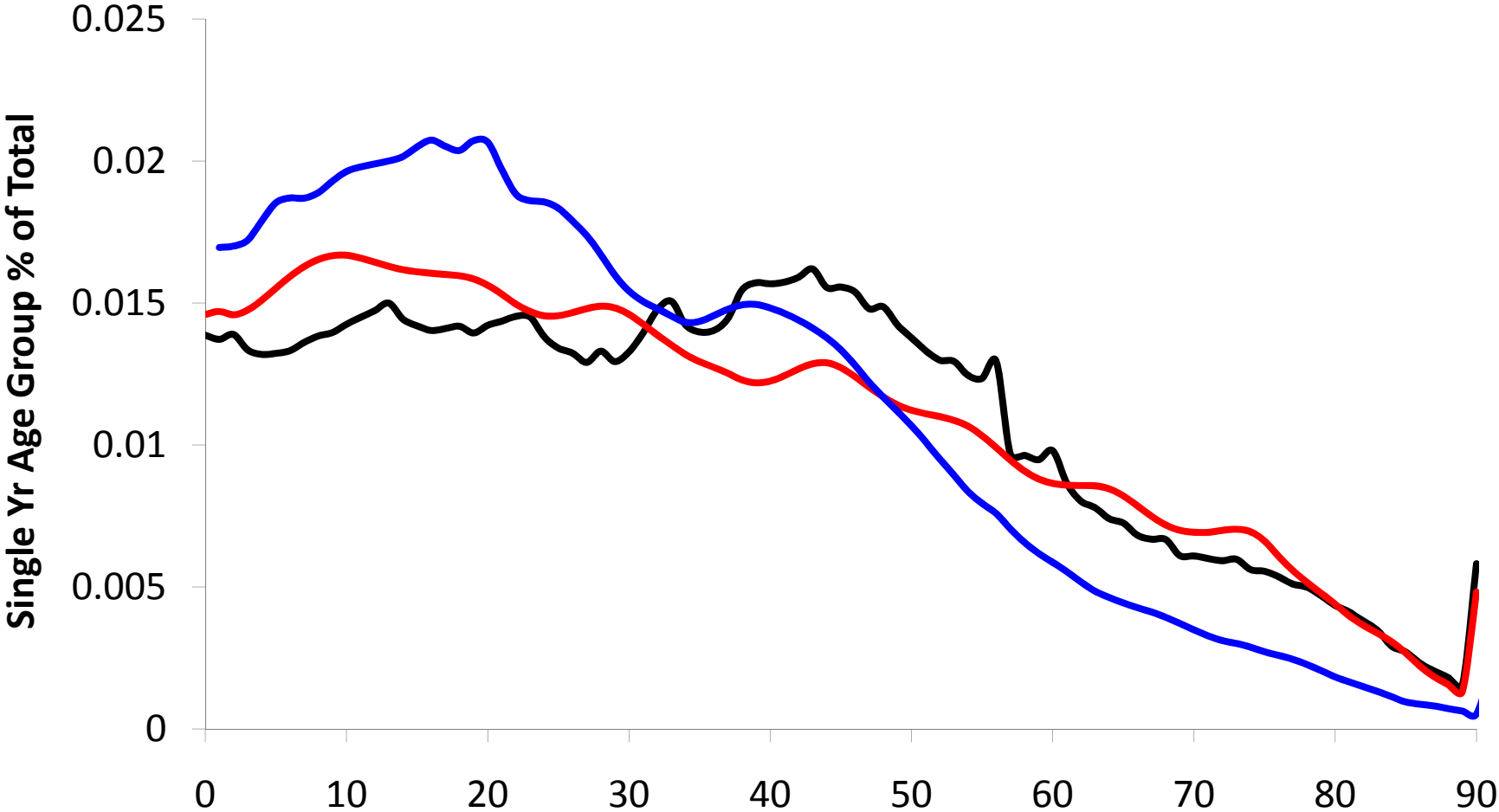
LCD

(Red - Uruguay 2006; Black - US 2003; Blue - Costa Rica 2004)



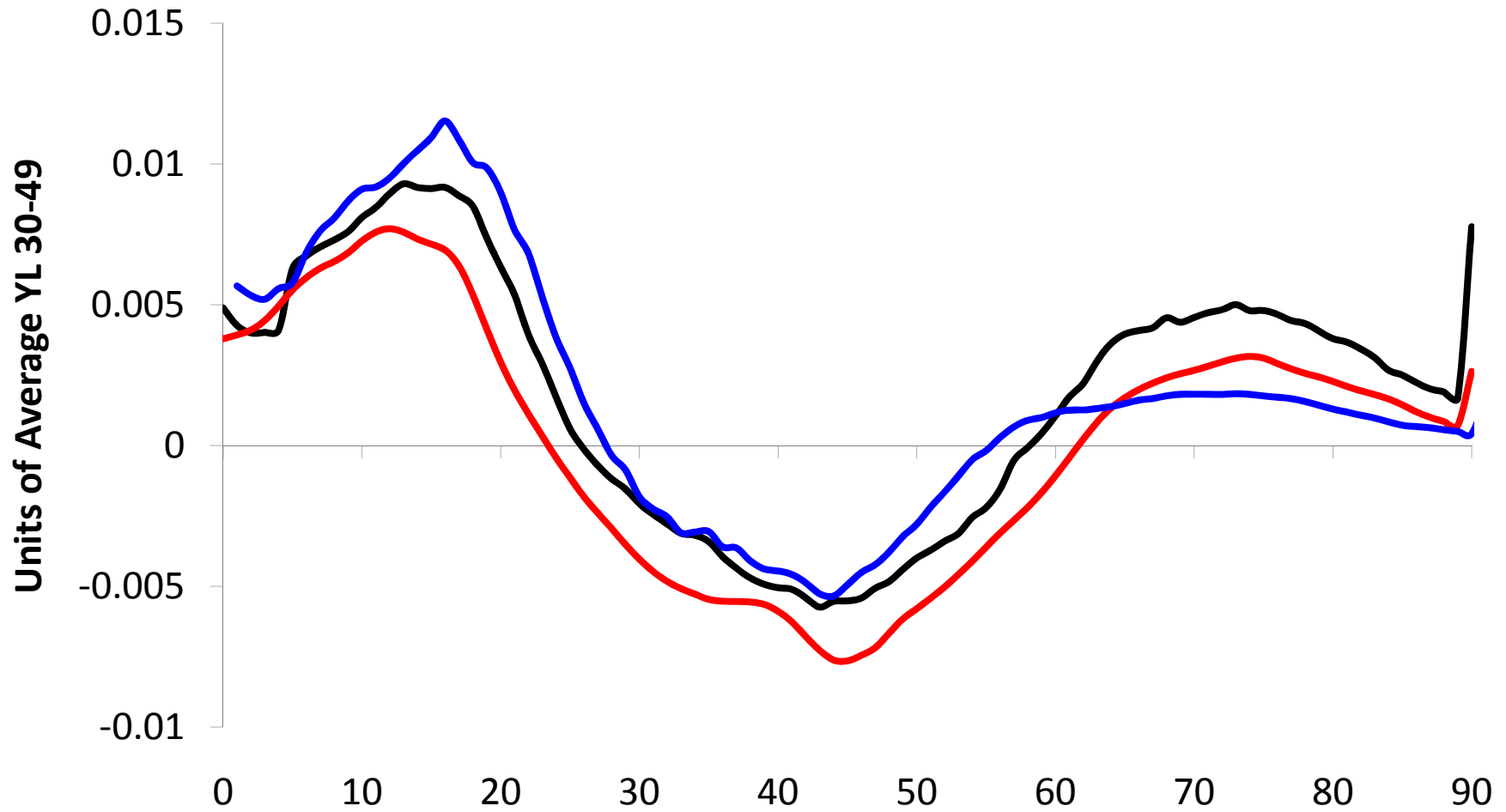
POPULATION AGE DISTRIBUTION

(Red - Uruguay 2006; Black - US 2003; Blue - Costa Rica 2004)



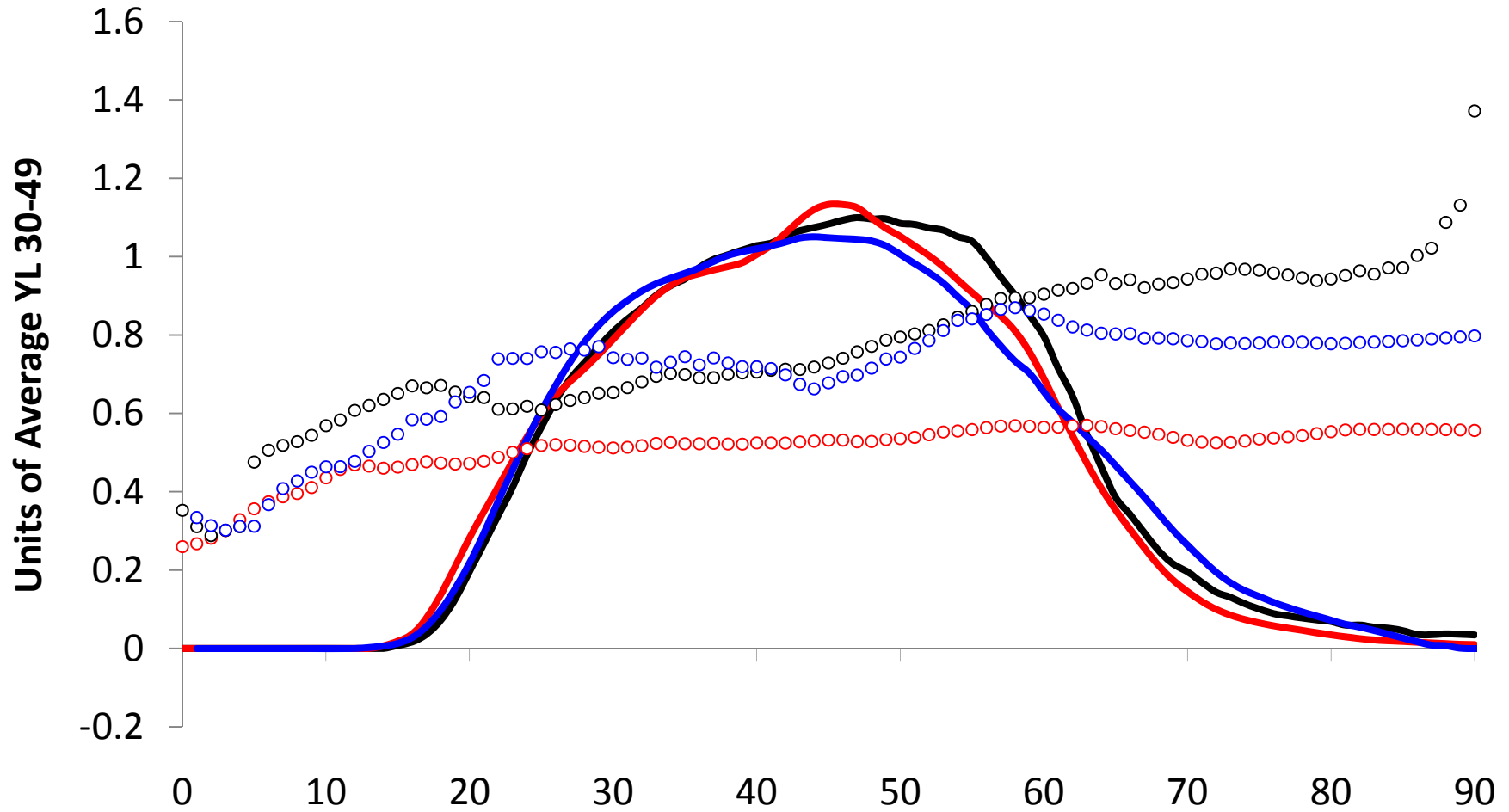
LCD - POPULATION WEIGHTED

(Red - Uruguay 2006; Black - US 2003; Blue - Costa Rica 2004)



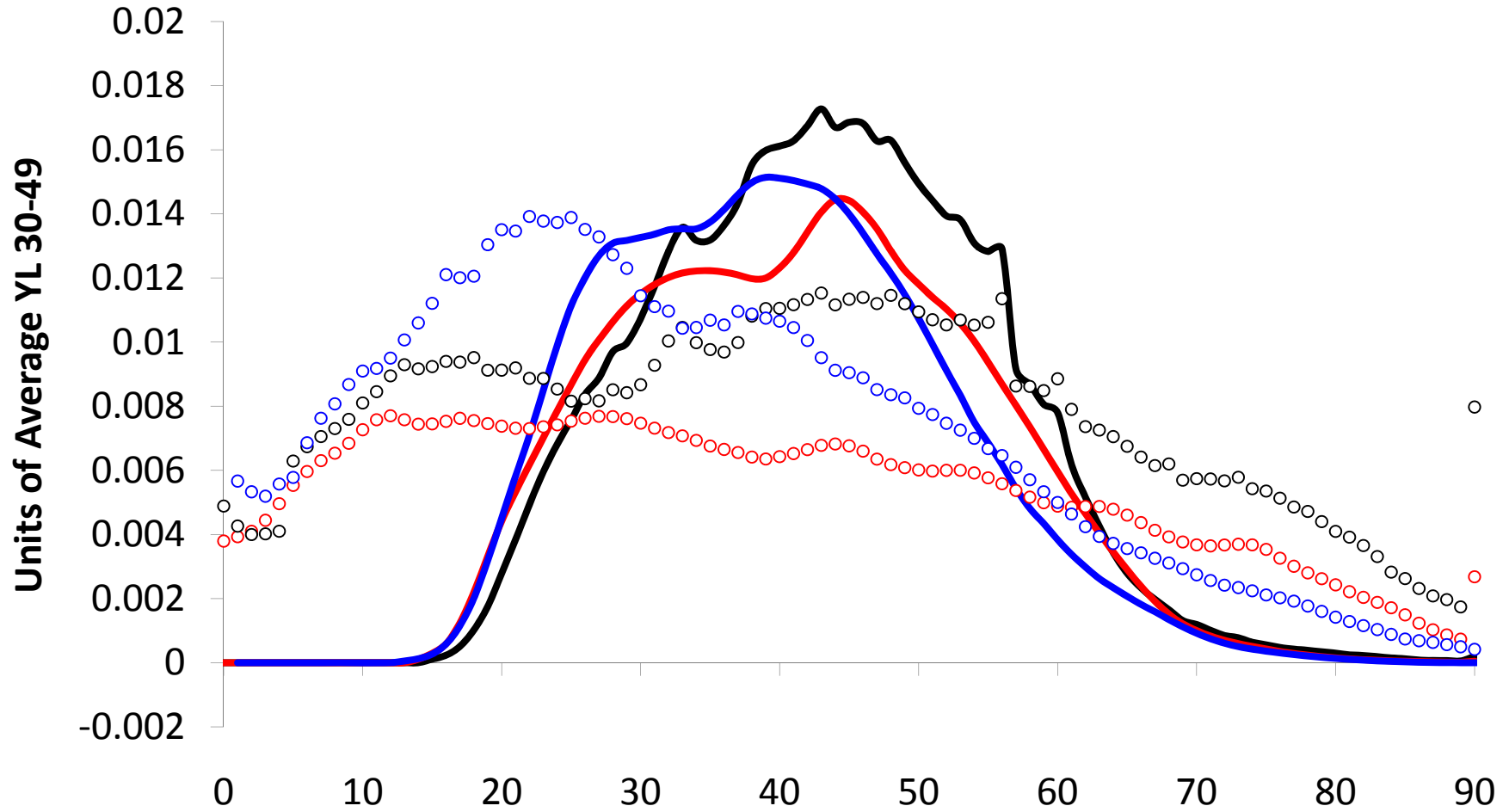
Labor Income and Consumption

(Red - Uruguay 2006; Black - US 2003; Blue - Costa Rica 2004)

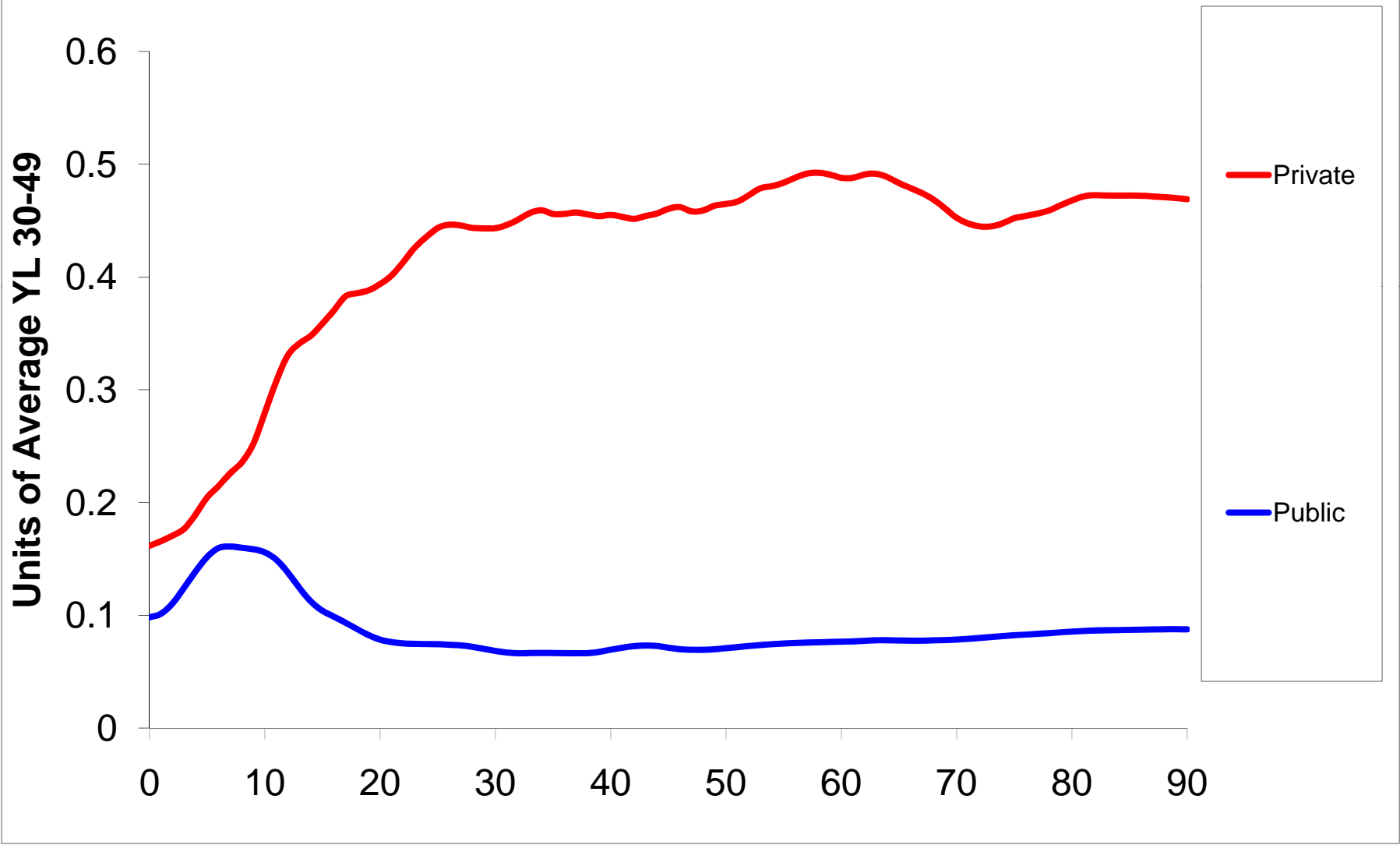


YL & C - POPULATION WEIGHTED

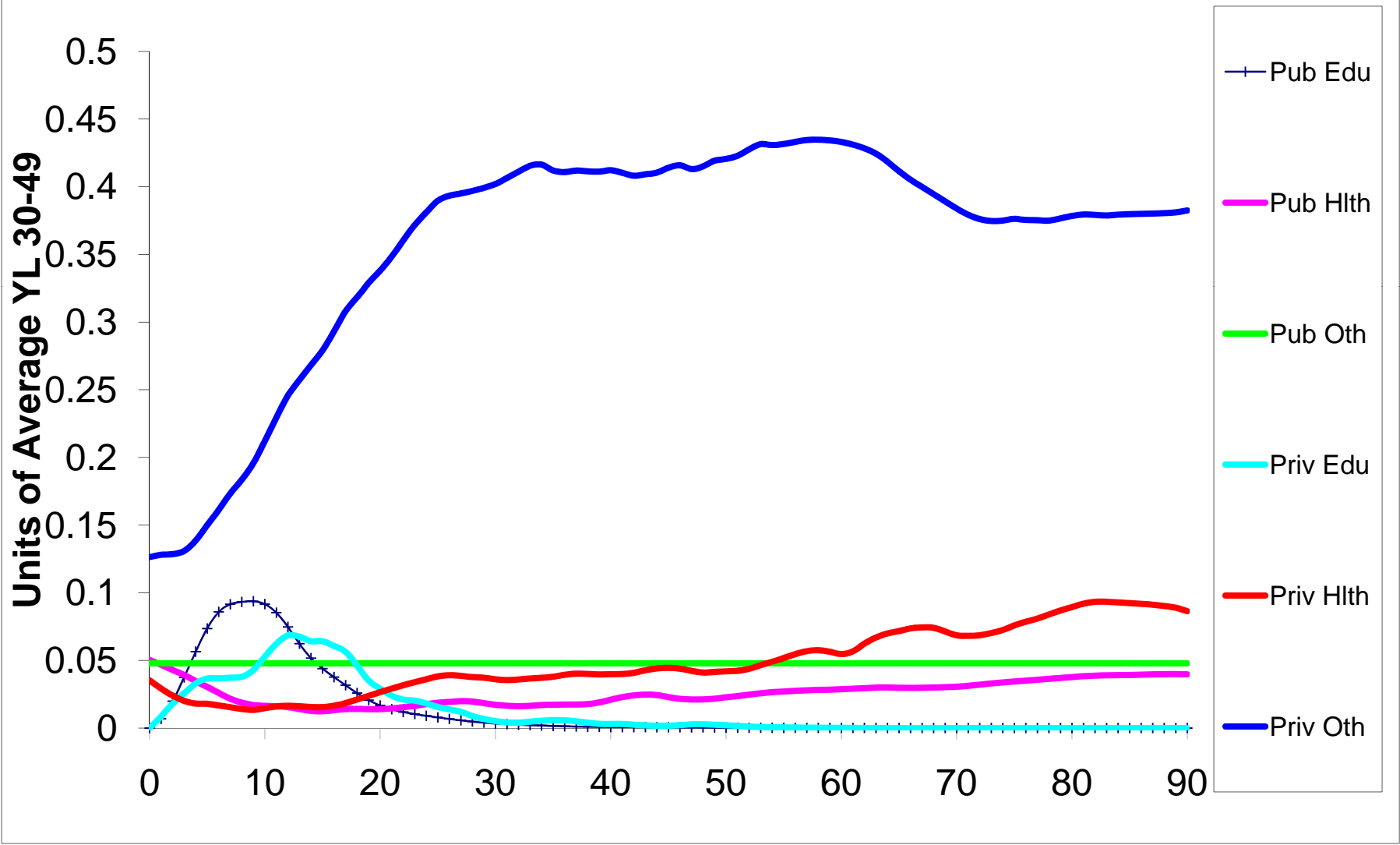
(Red - Uruguay 2006; Black - US 2003; Blue - Costa Rica 2004)



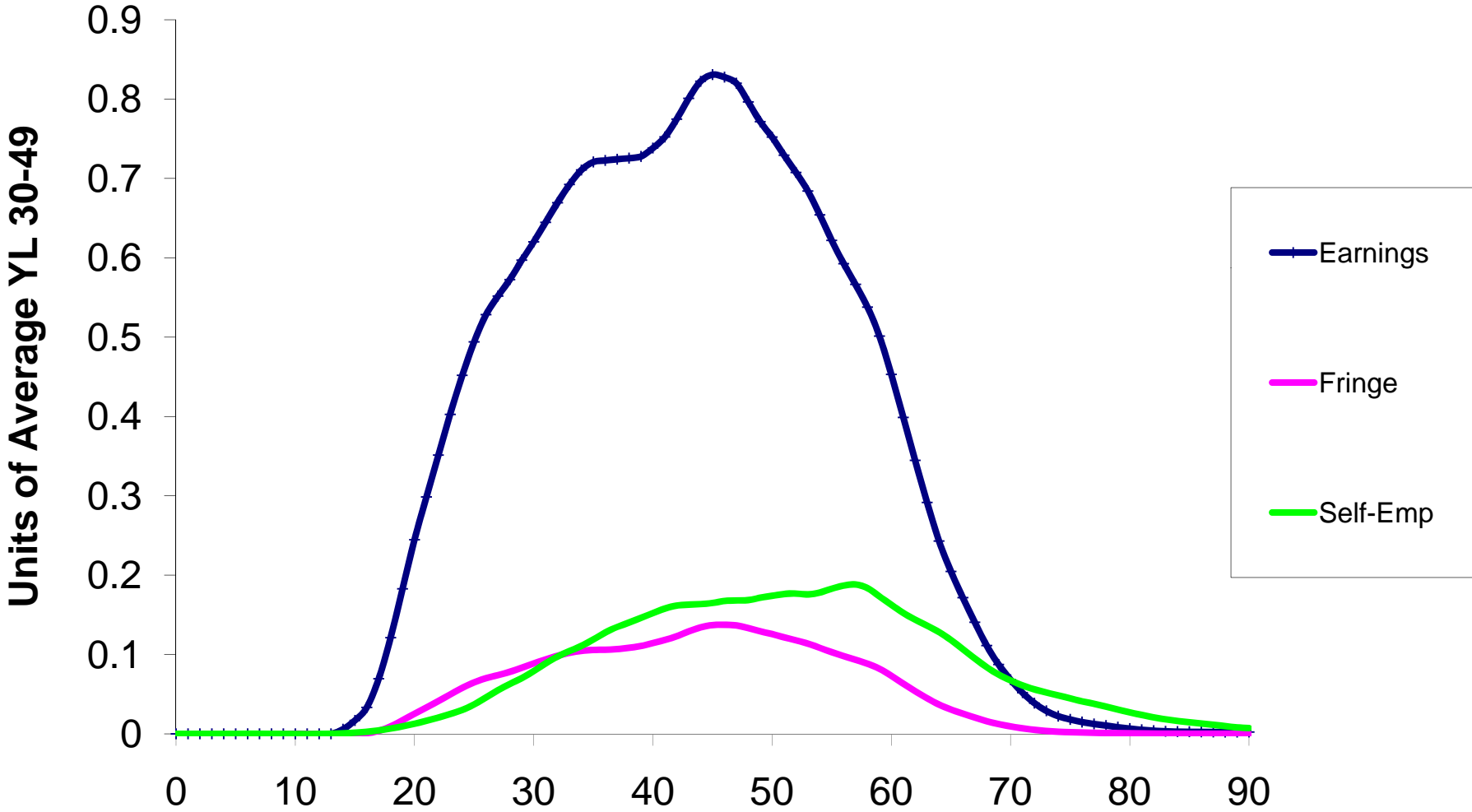
C - Public and Private



C Components

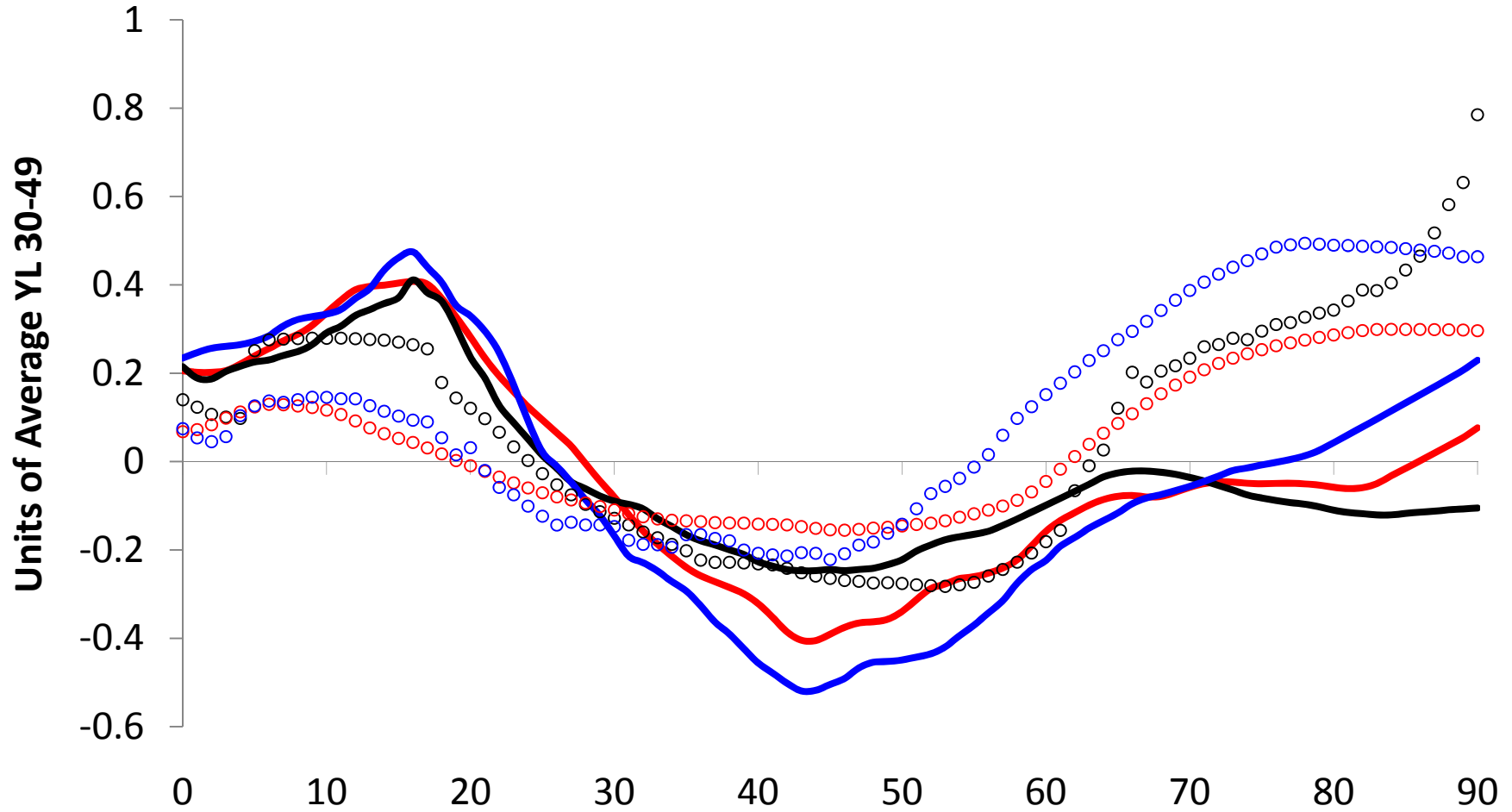


YL Components



Transfers

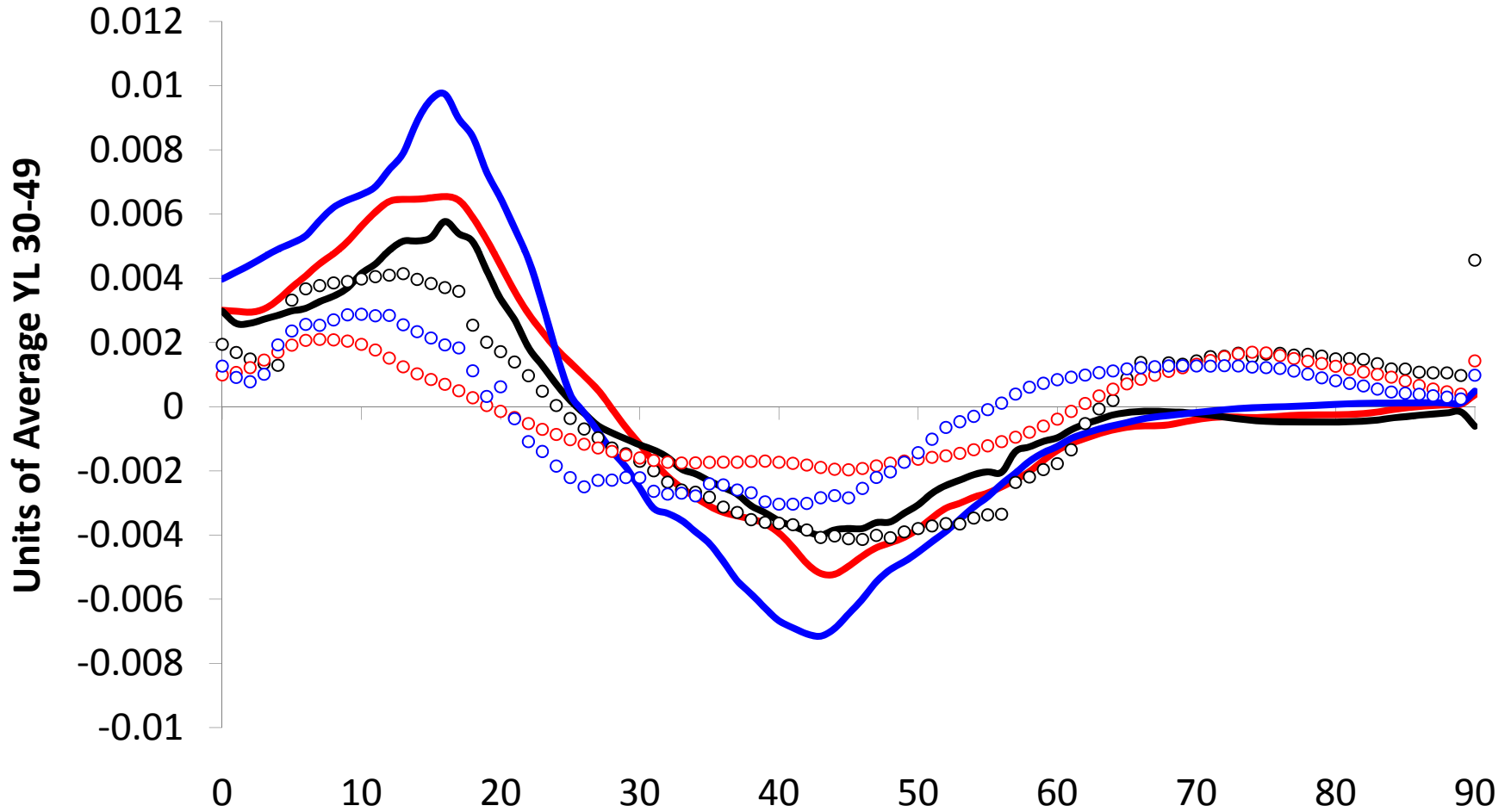
(Red - Uruguay; Black - US; Blue - Costa Rica)
Circles are public transfers, lines are private transfers)



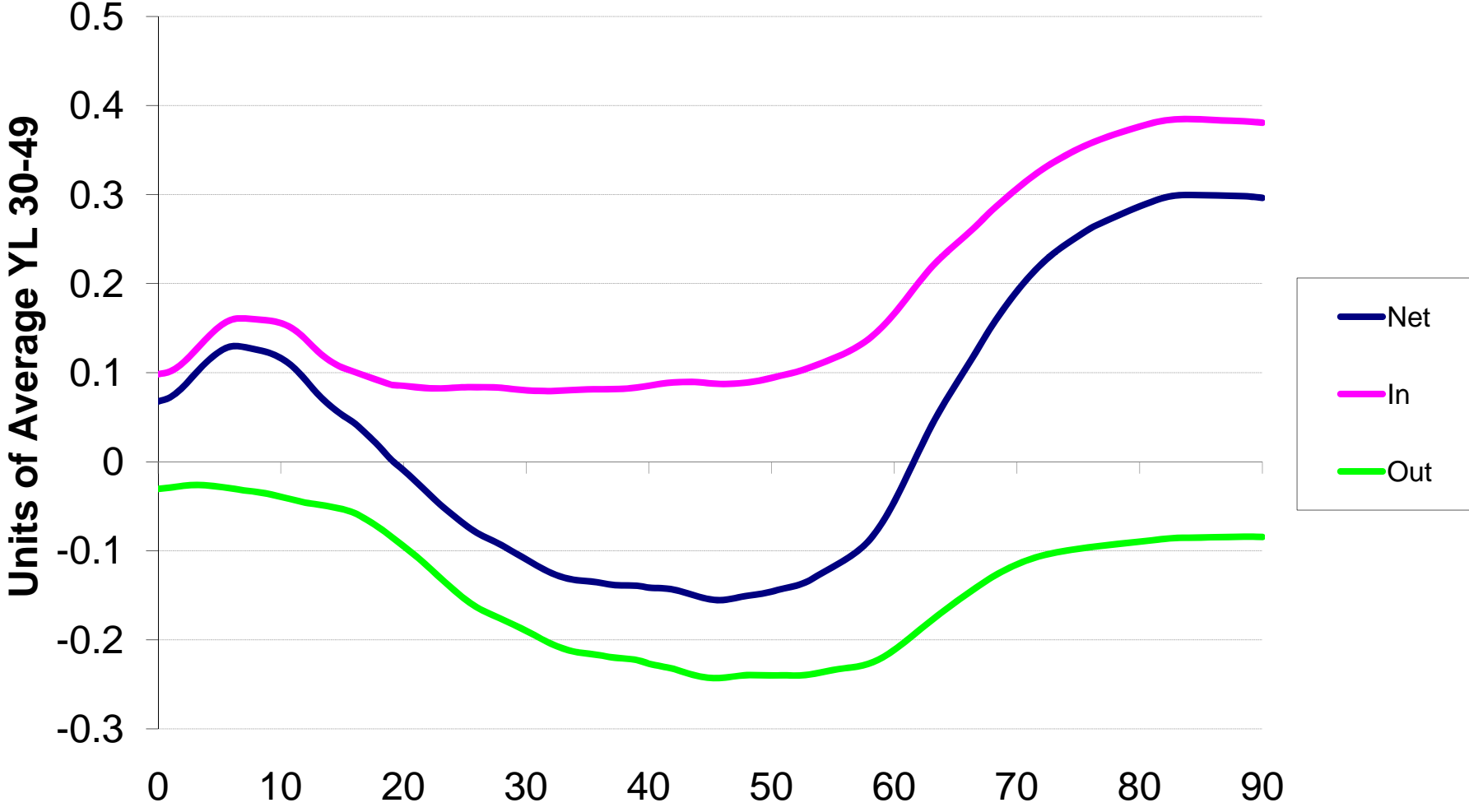
Transfers - POPULATION WEIGHTED

(Red - Uruguay; Black - US; Blue - Costa Rica)

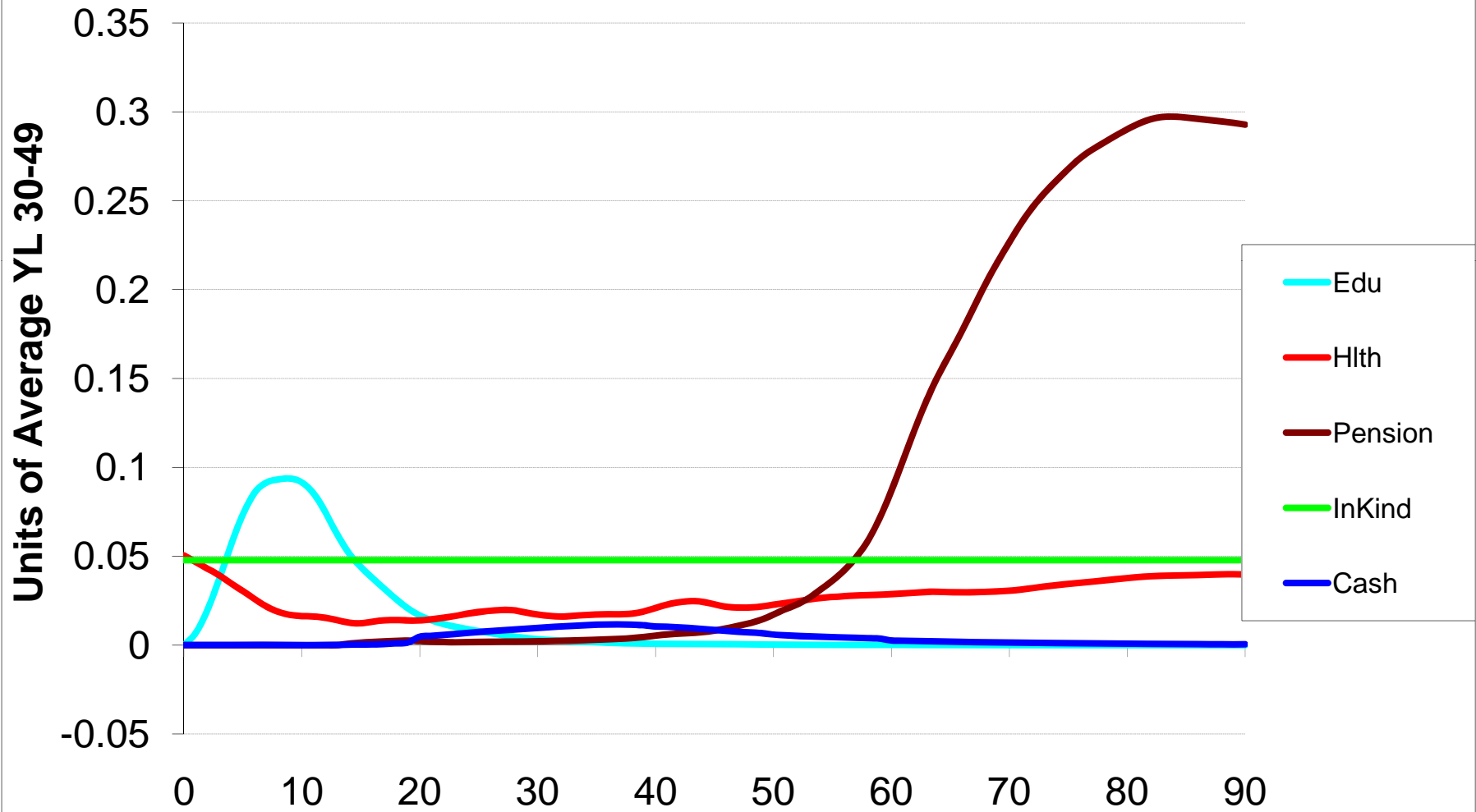
Circles are public transfers, lines are private transfers



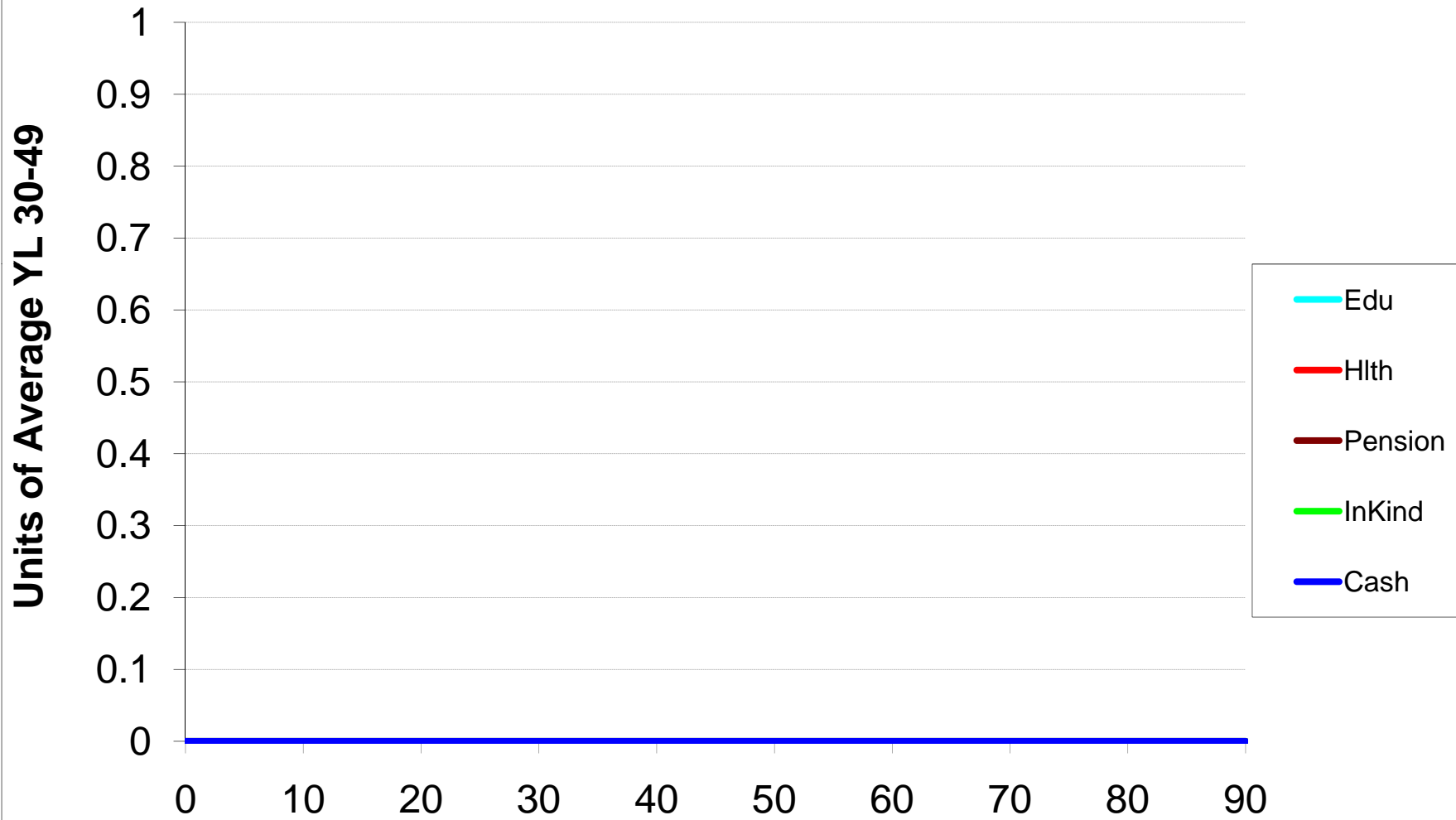
Public Transfers



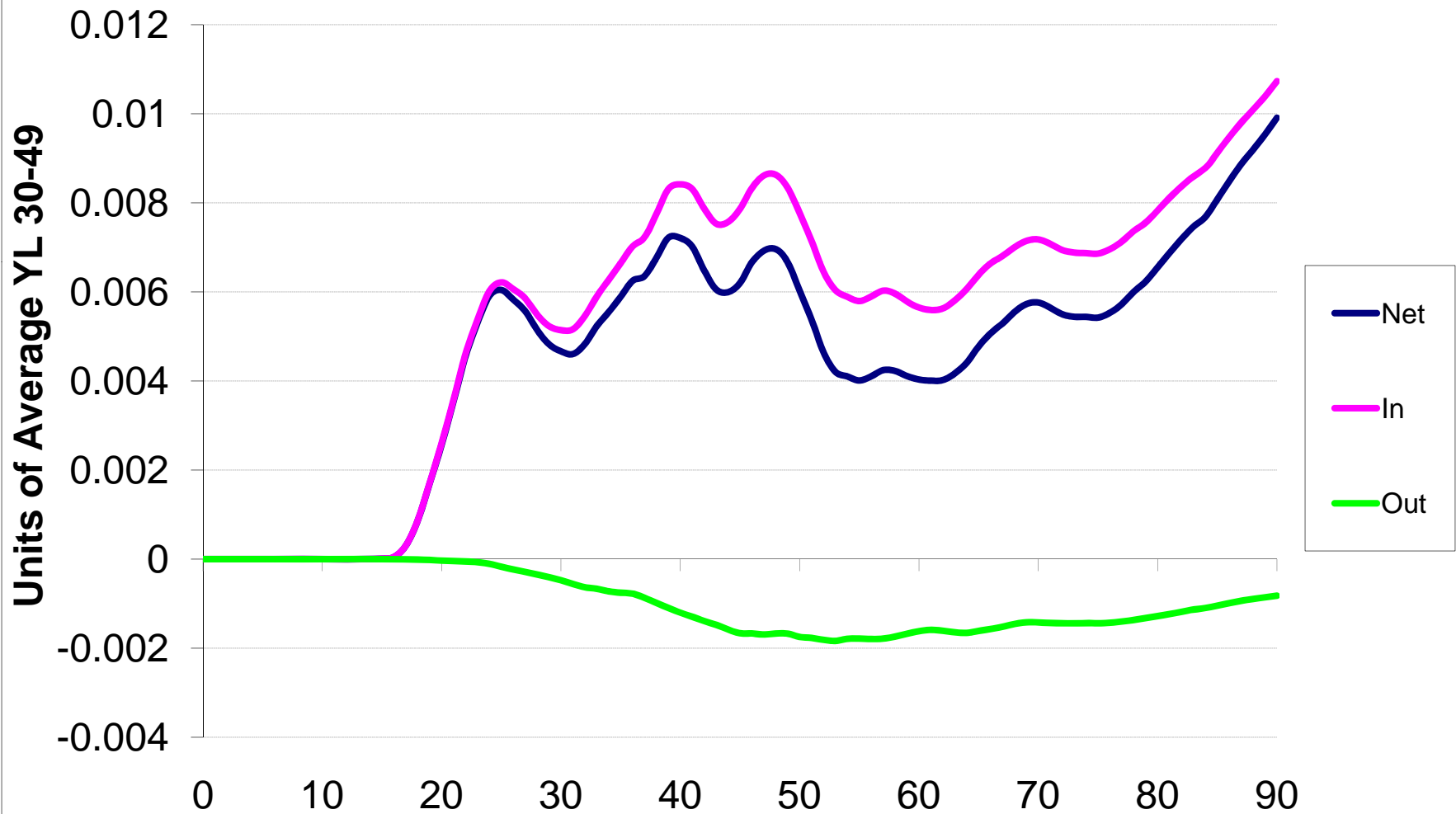
Public Transfer Inflows Components



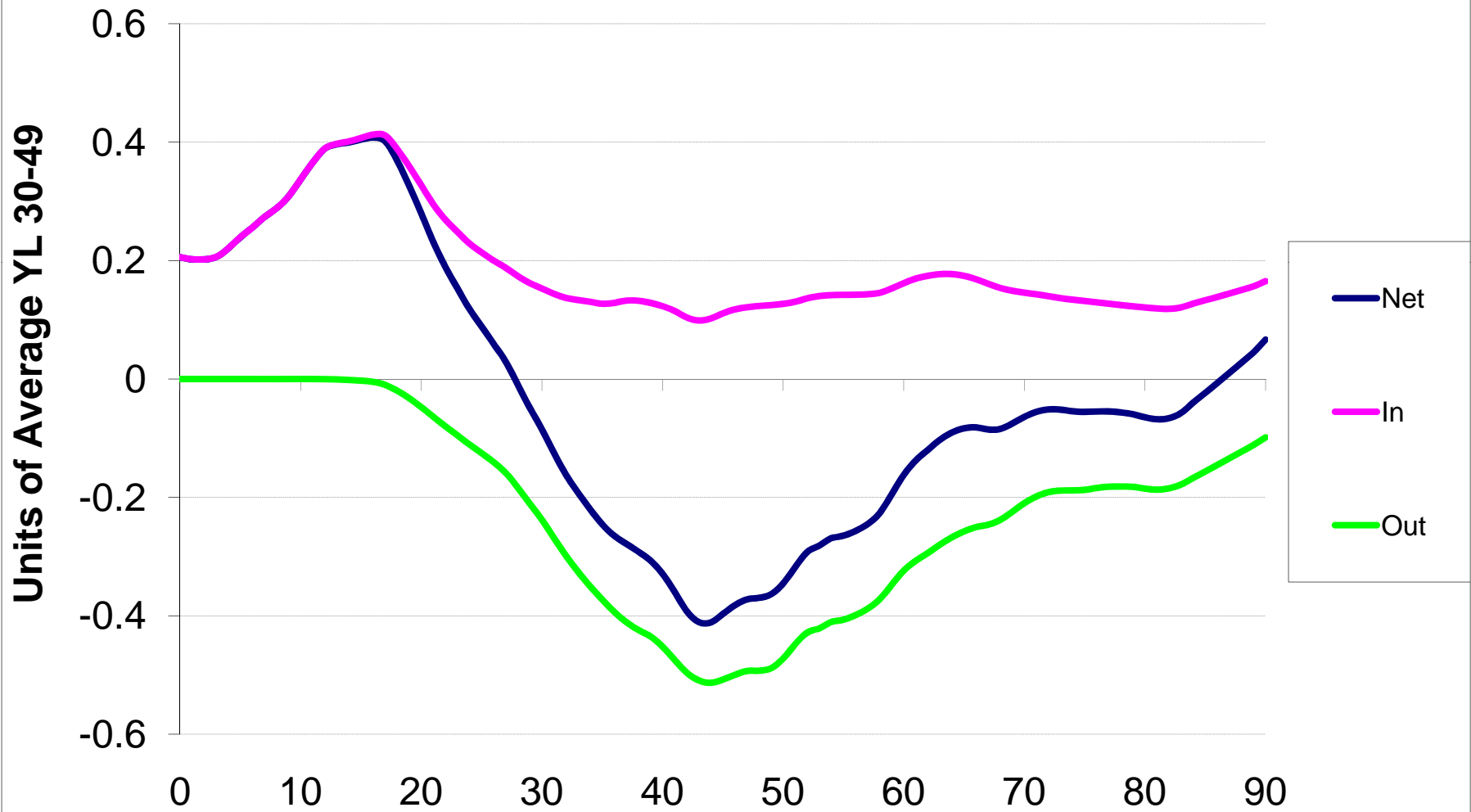
Public Transfer Outflow Components



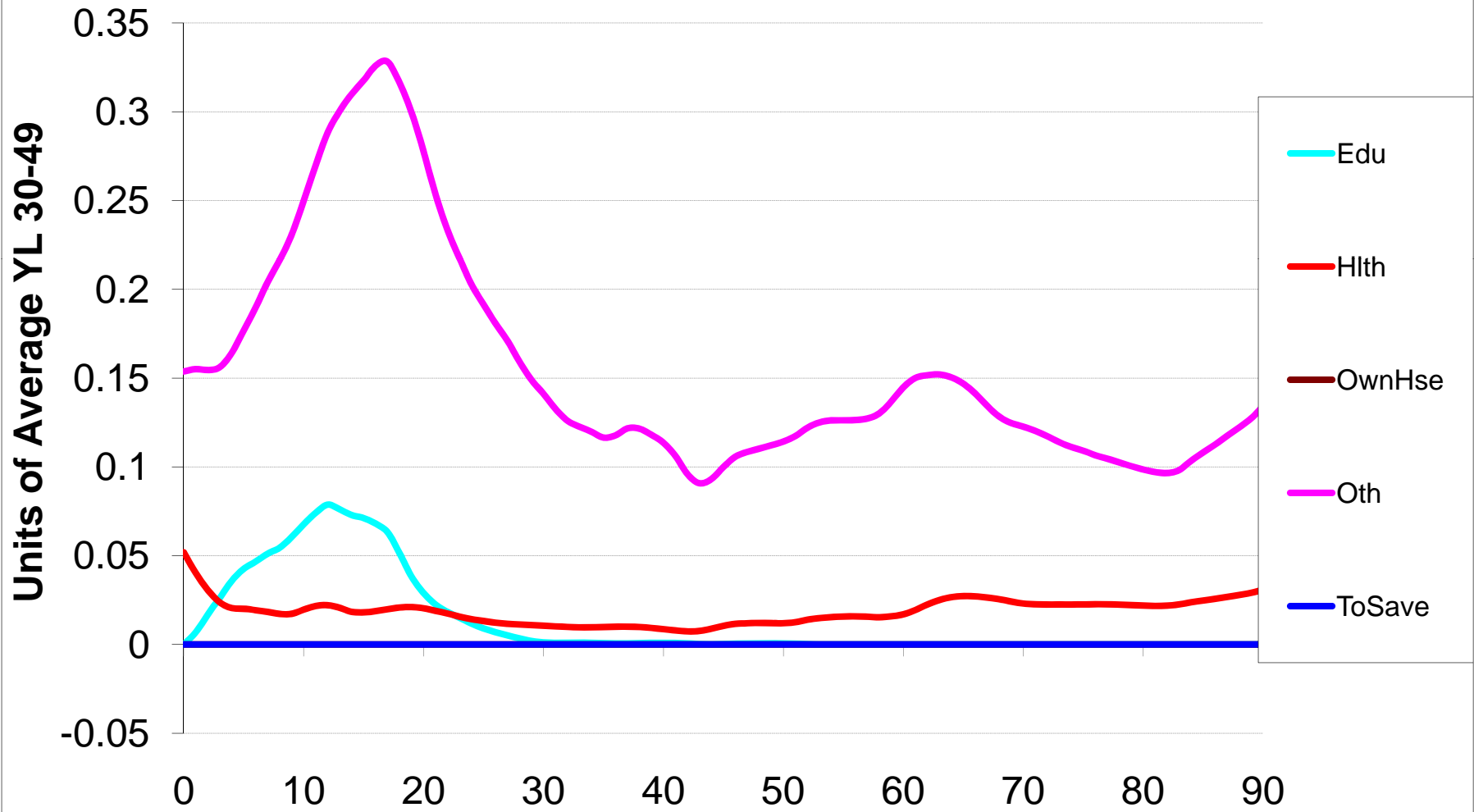
Private Interhousehold Transfers



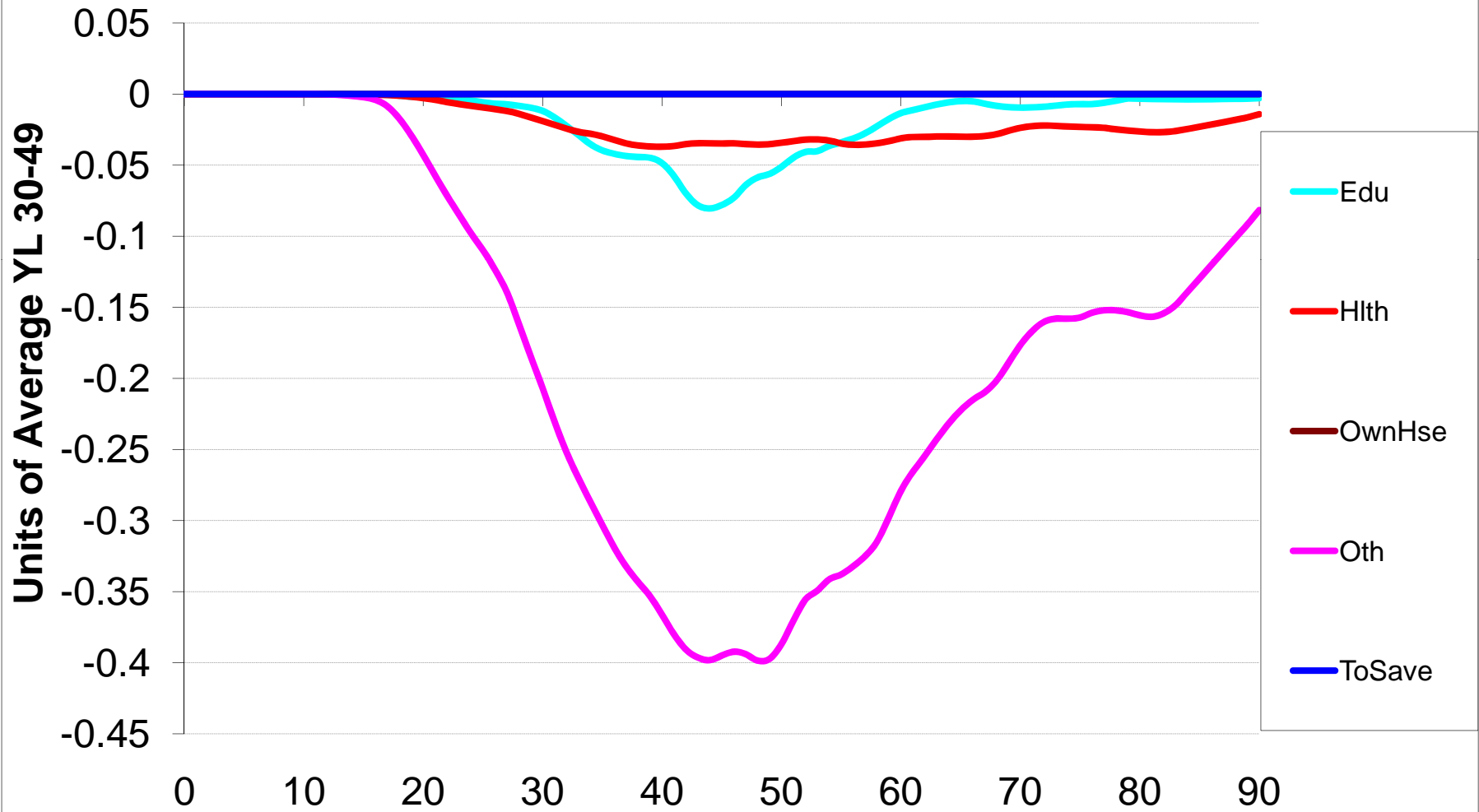
Private Intrahousehold Transfers



Private Intrahousehold Inflows

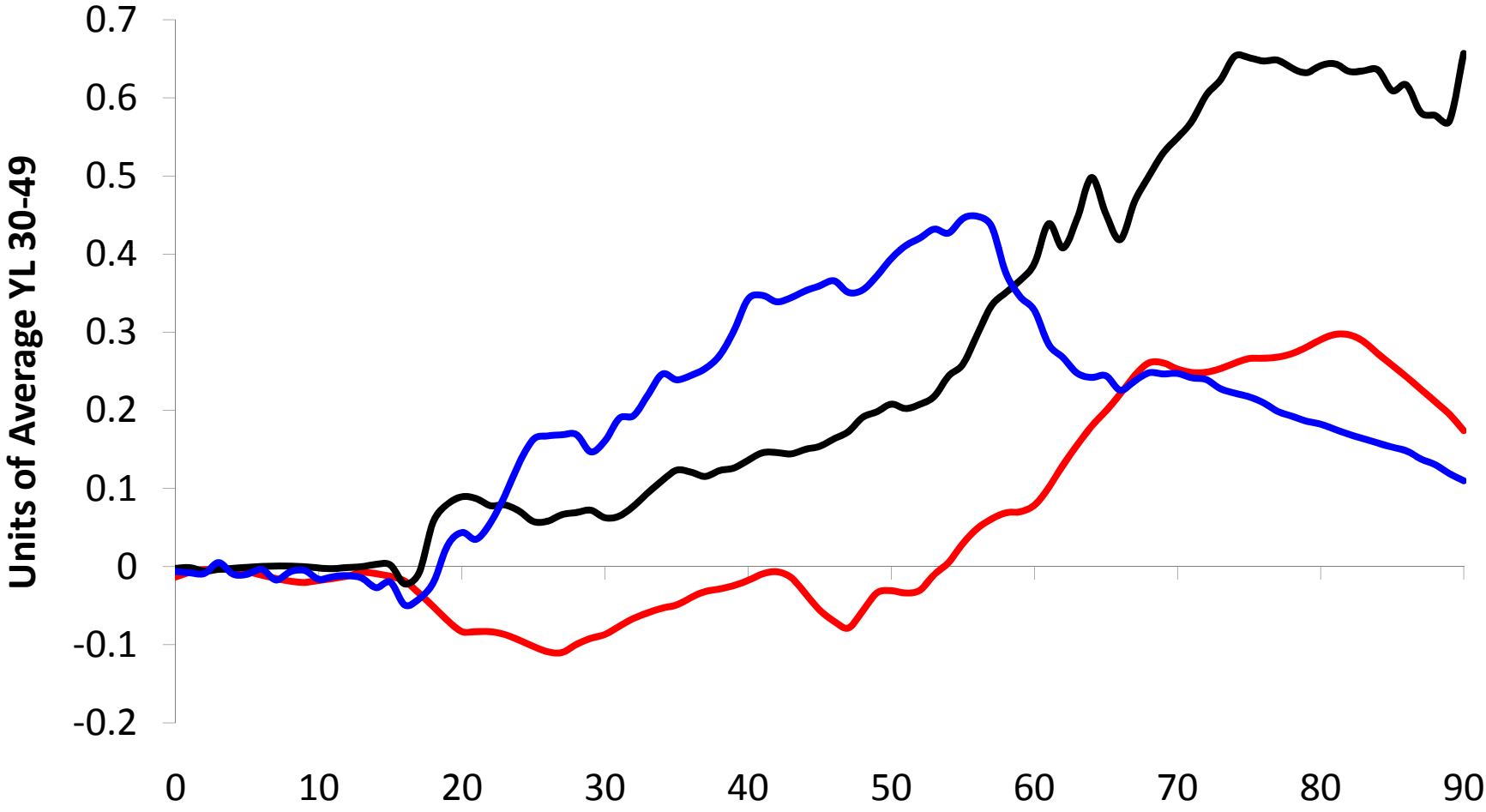


Private Intrahousehold Outflows



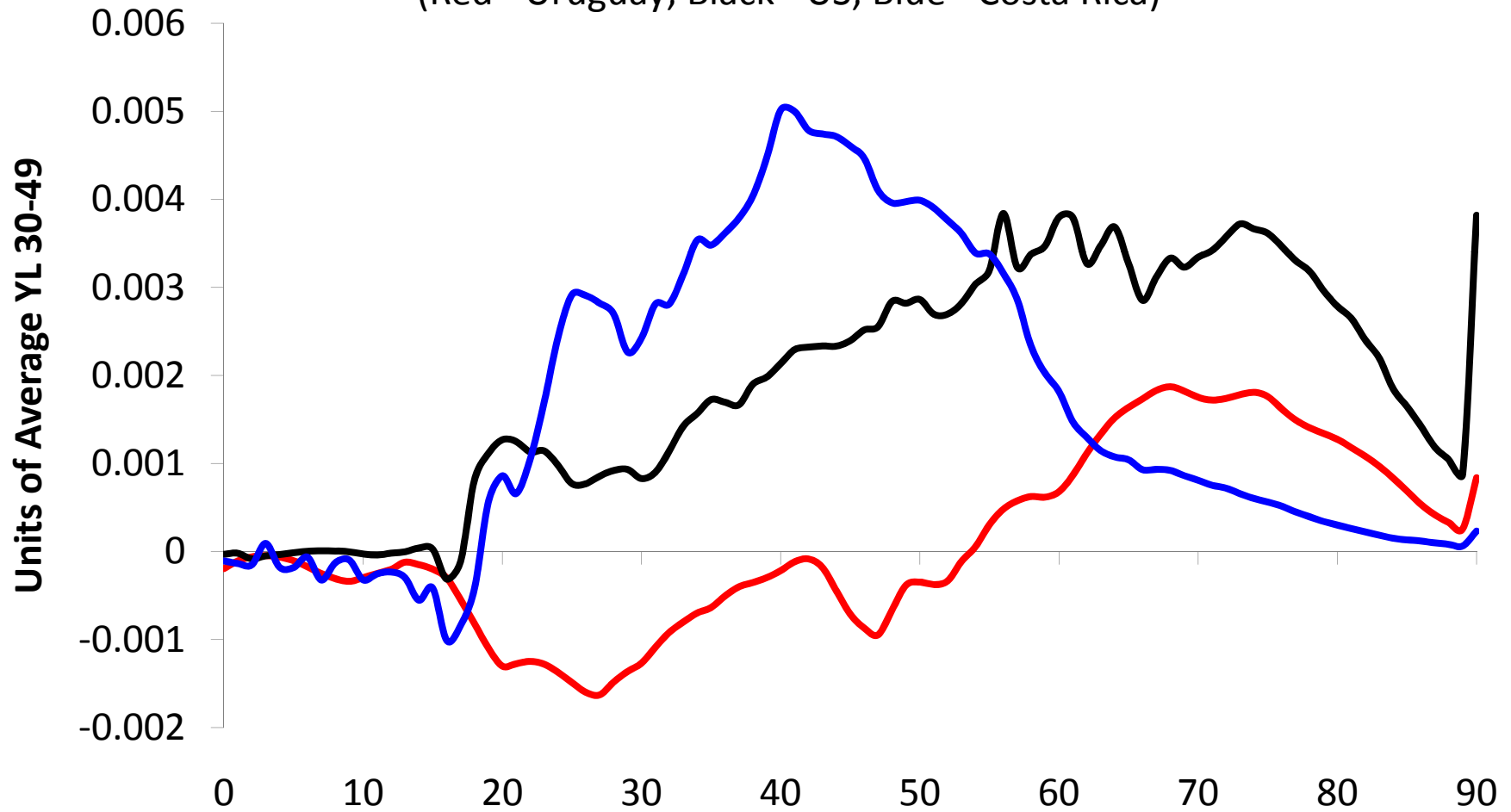
Asset-Based Reallocations

(Red - Uruguay; Black - US; Blue - Costa Rica)

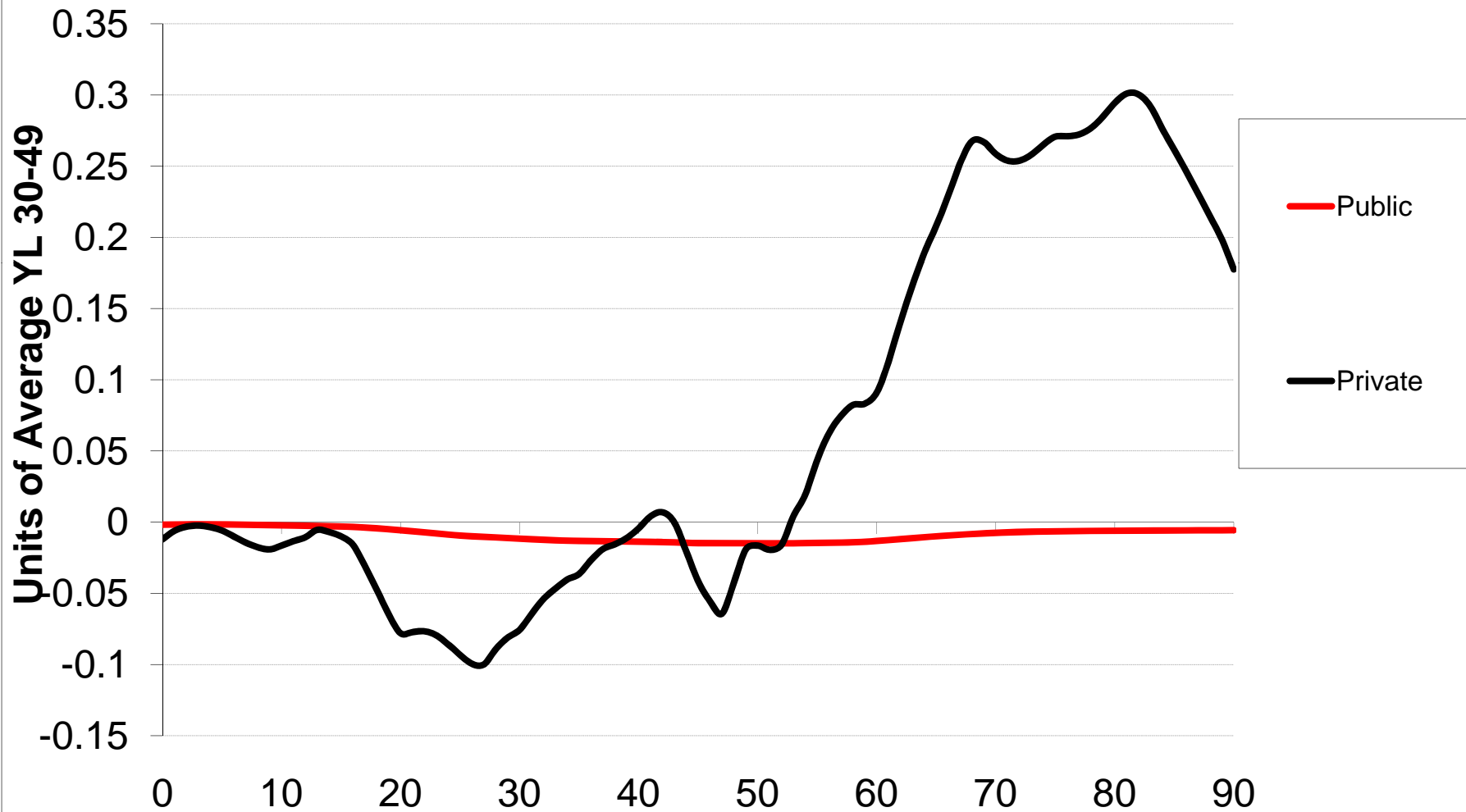


Asset-Based Reallocations POPULATION WEIGHTED

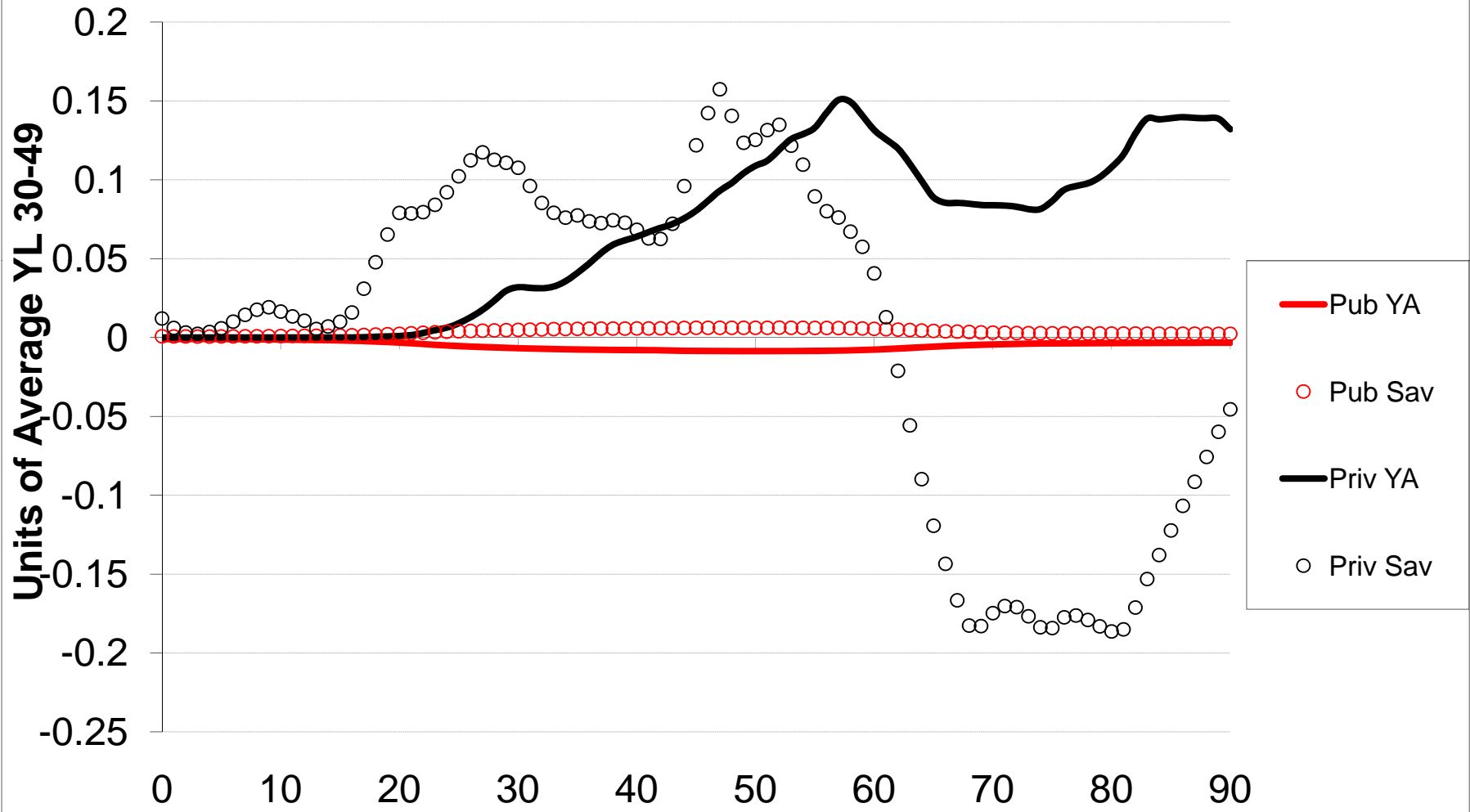
(Red - Uruguay; Black - US; Blue - Costa Rica)



Asset-Based Reallocations, Public and Private

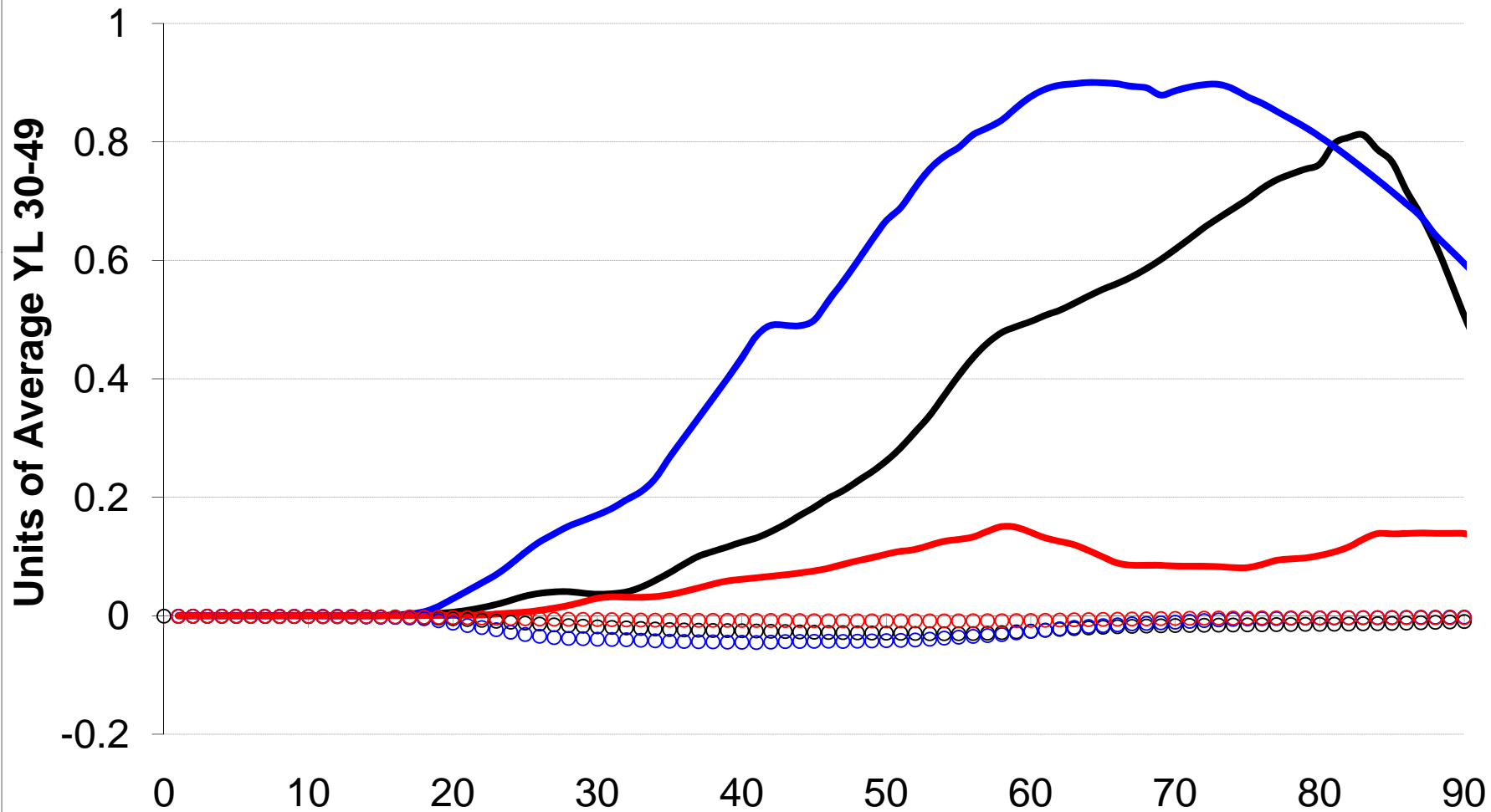


Asset-Based Reallocations, Asset Income & Saving



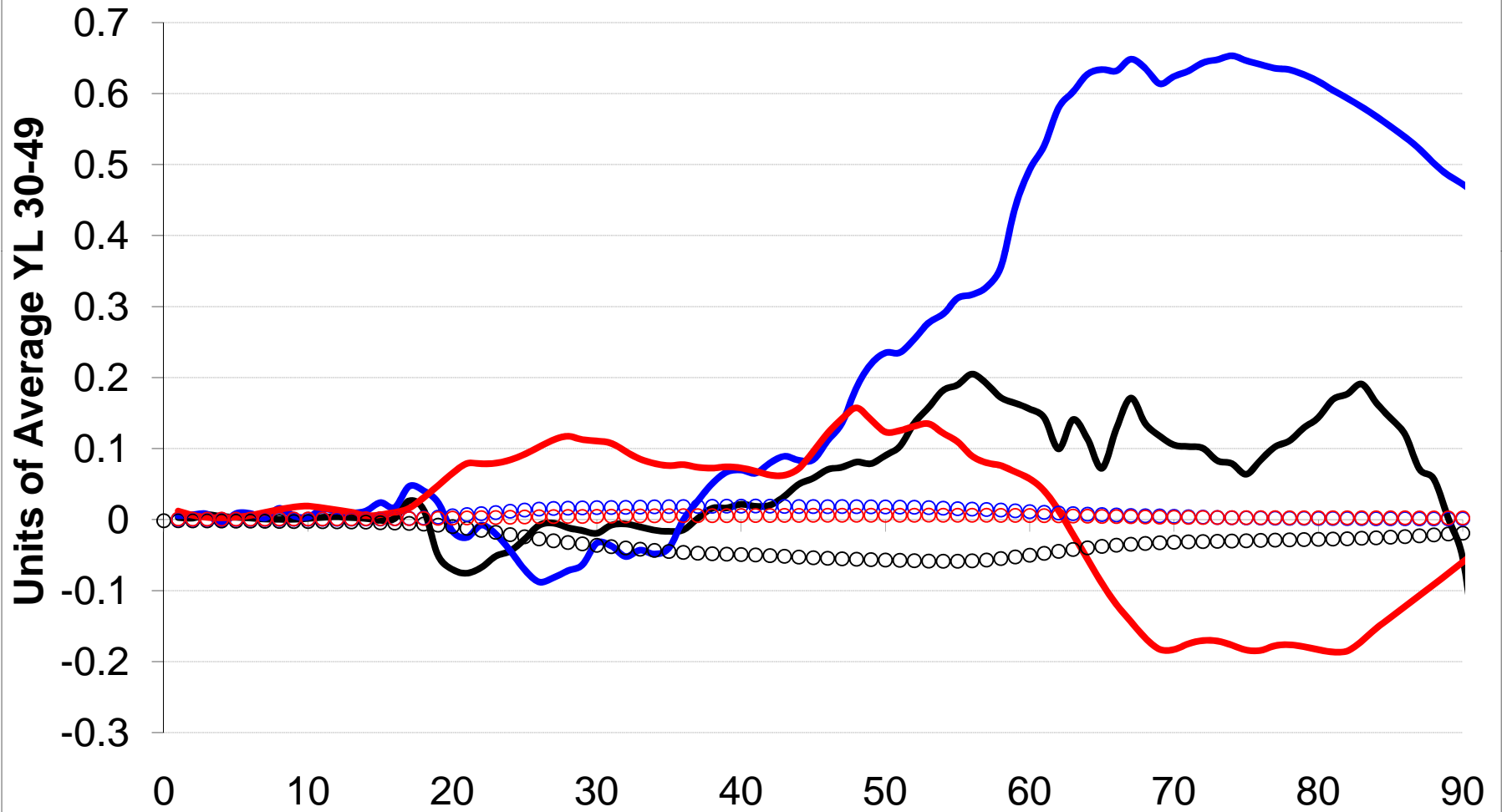
Comparative Asset Income

(Lines Private, Circles Public; Red - UY, Black - US, Blue - CR)



Comparative Saving

(Lines Private, Circles Public; Red - UY, Black - US, Blue - CR)



Financing the Lifecycle Deficit Components at Each Age

