

Canada (2006)

41st Summer Seminar Posters
(Workshop, Track A)

By Yuan Liu

Qi Zhang

Supervisor: Marcel Mérette

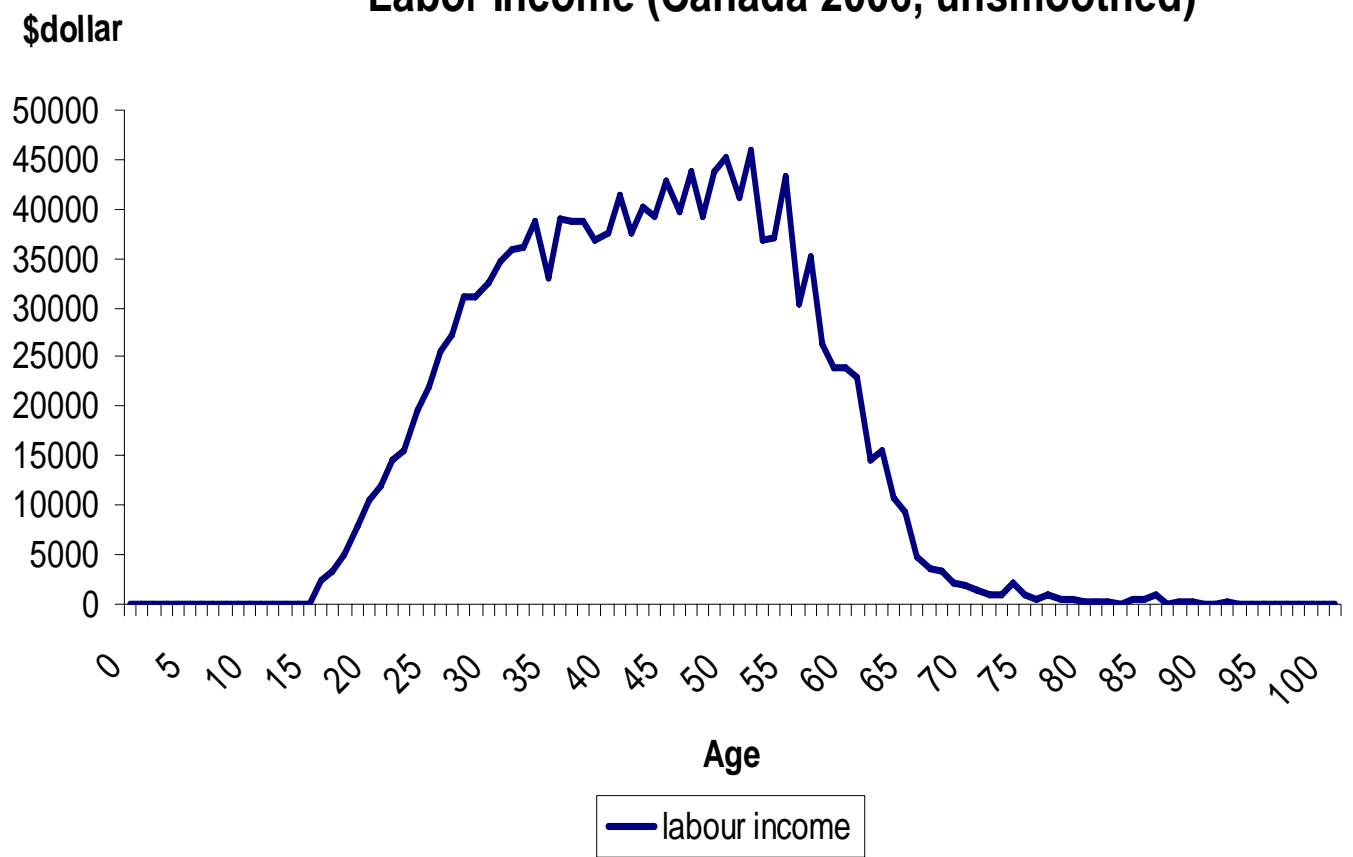
By June 12, 2010

\$CAD Population Profile (Canada Census, 2006)



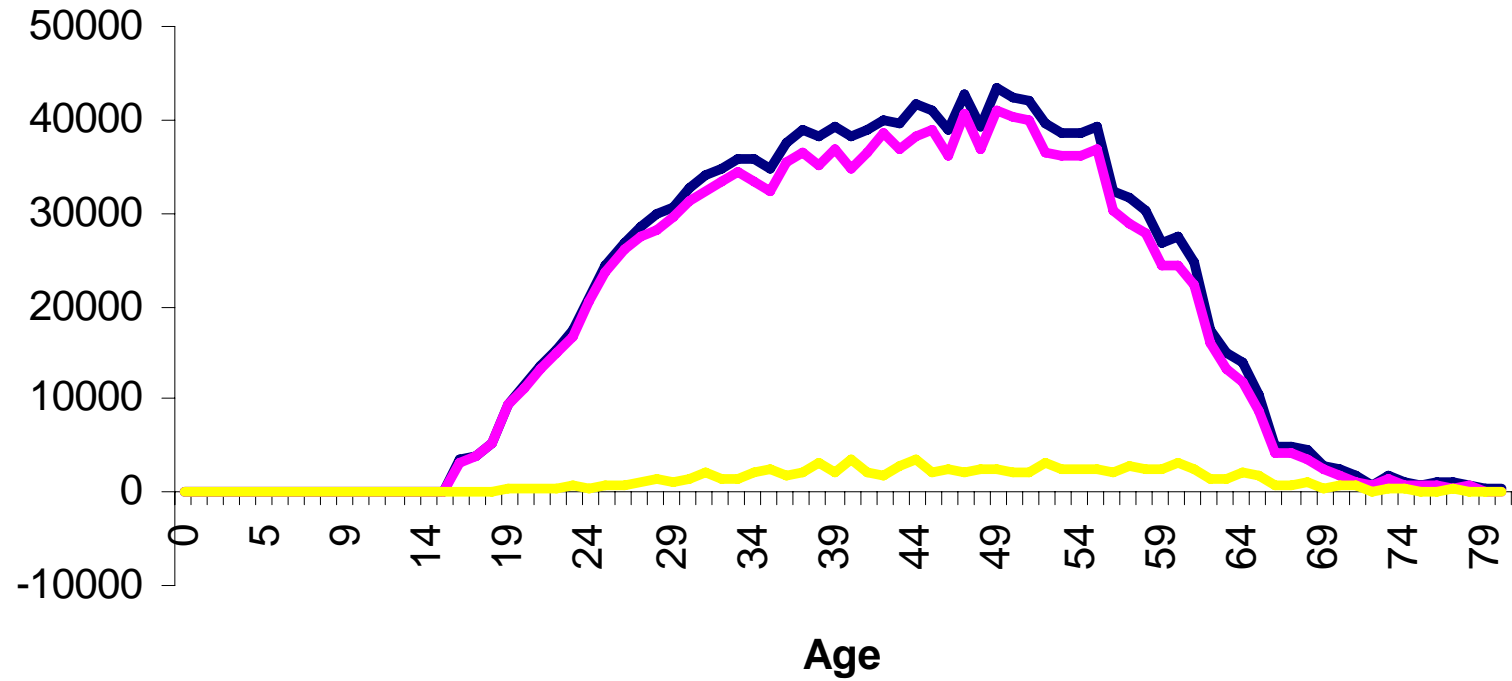
— Pop (persons)

Labor Income (Canada 2006, unsmoothed)



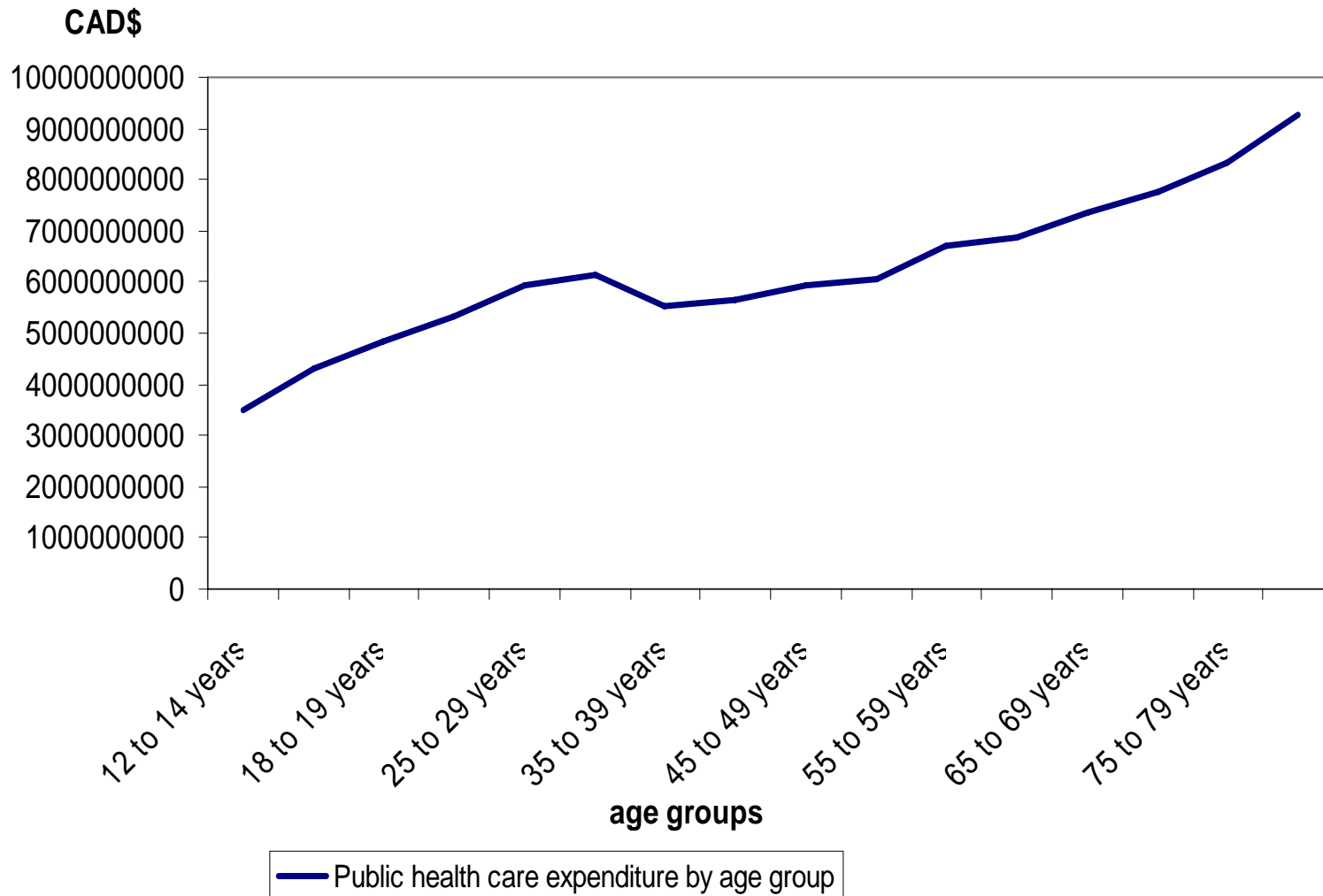
Labour Income

\$ dollar Can

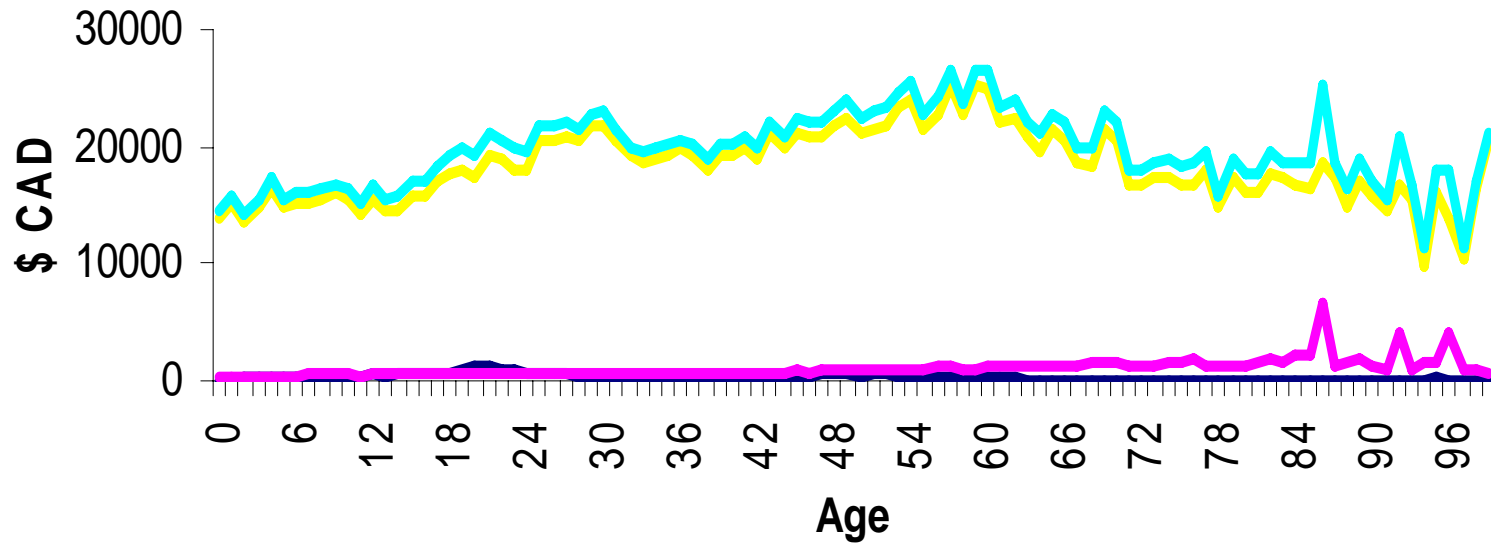


labour income wages and salaries self-employment net income

Public health care expenditure by age group (Canada 2006)

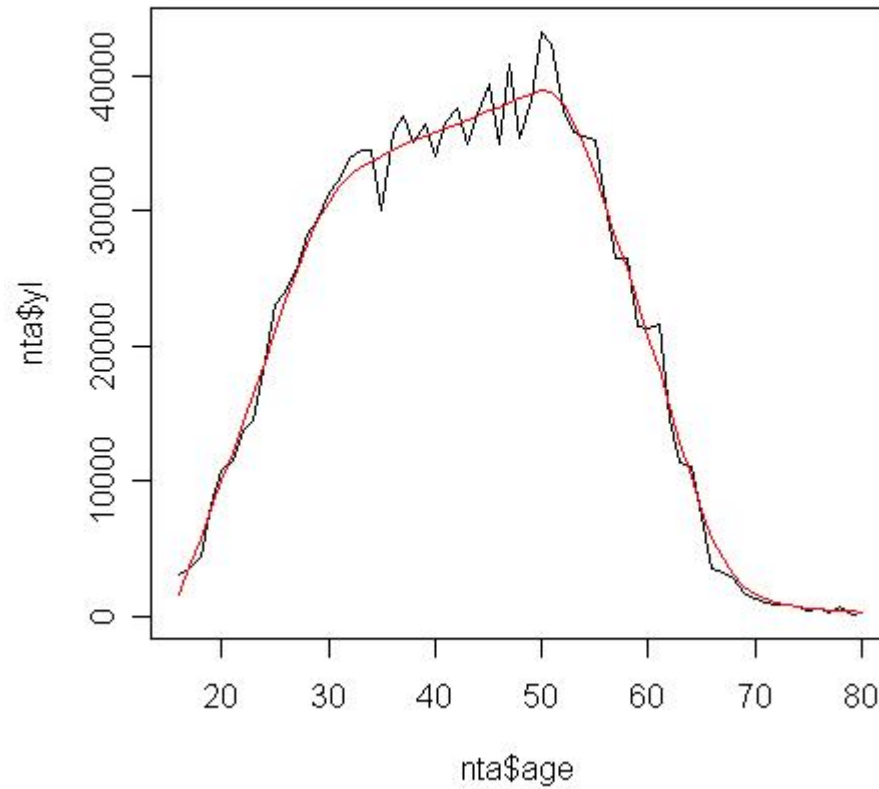


Private consumption by component (Canada, 2006)

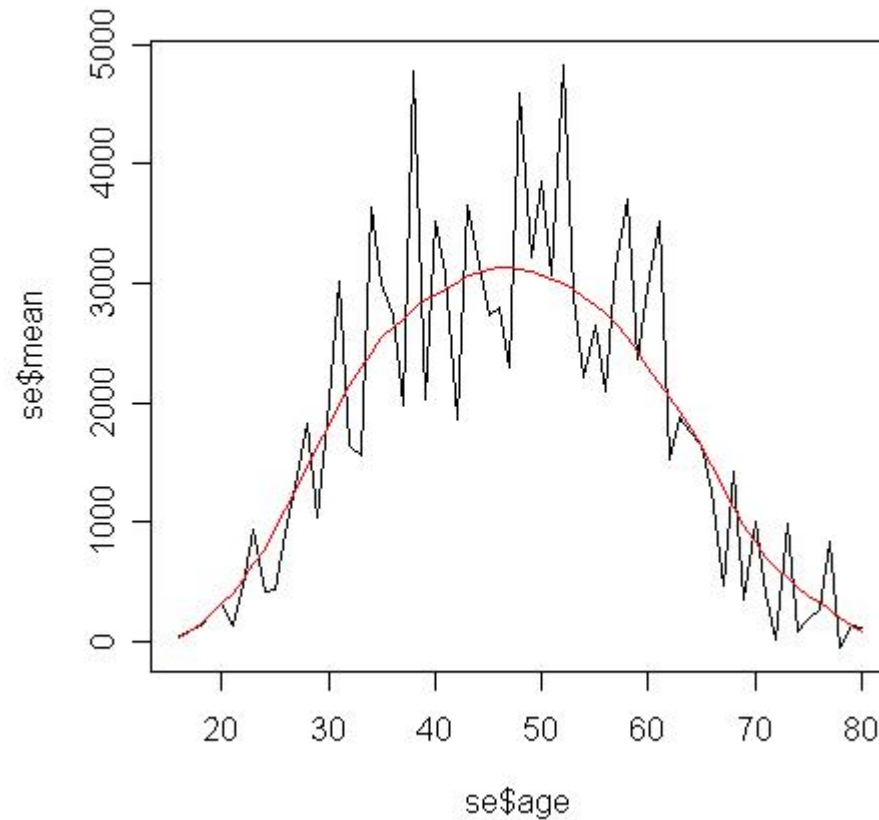


- Edu expenditure (per capita, weighted)
- health expenditure (per capita)
- Other consumption (per capita)
- total current consumption (per capita)

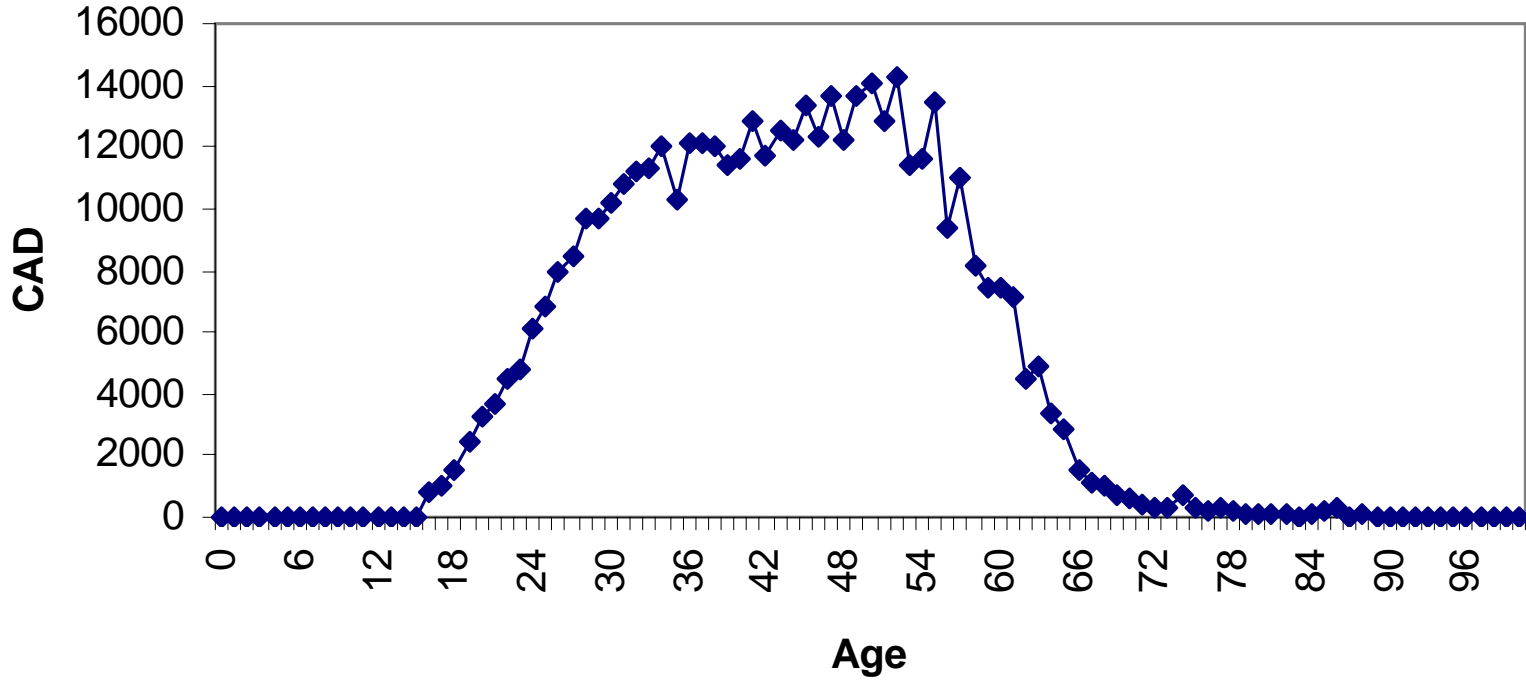
Labour income (smoothed)



Self-employment income (smoothed)

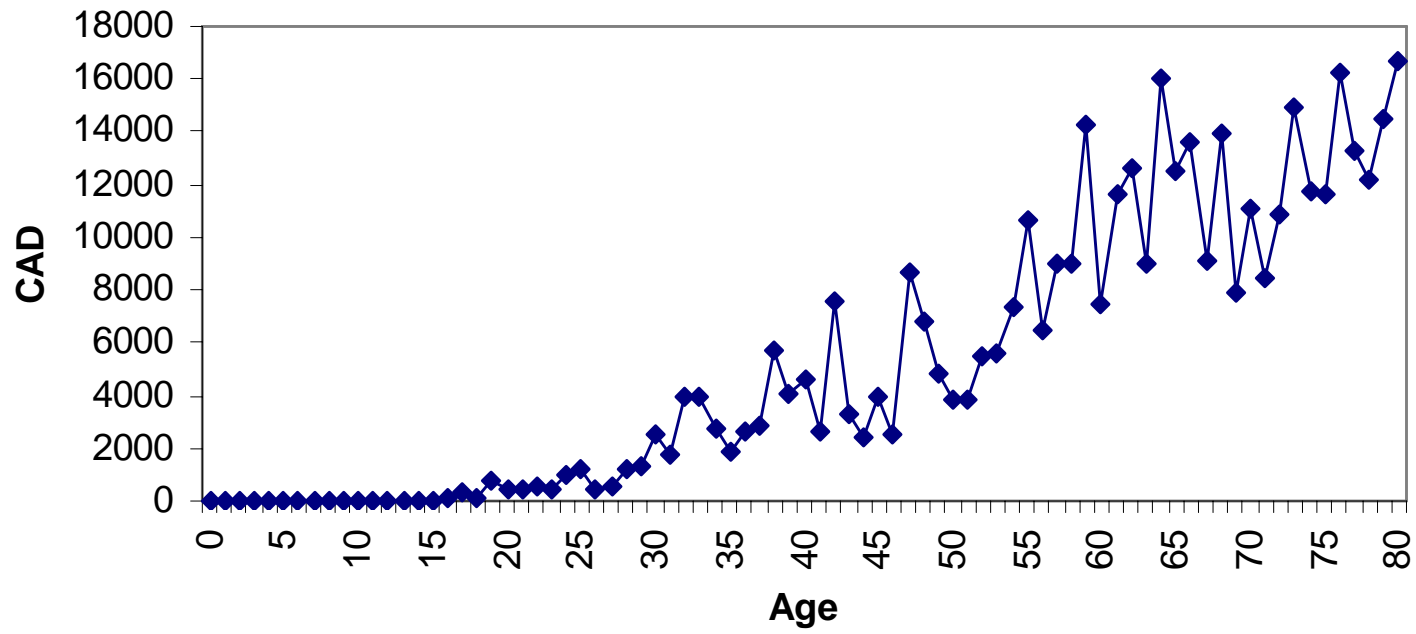


allocation tax rev on YL (per capita)



—◆— allocation tax rev on YL (per capita)

allocation tax rev on YA (per capita)



—◆— allocation tax rev on YA