

39th Summer Seminar: Final Report

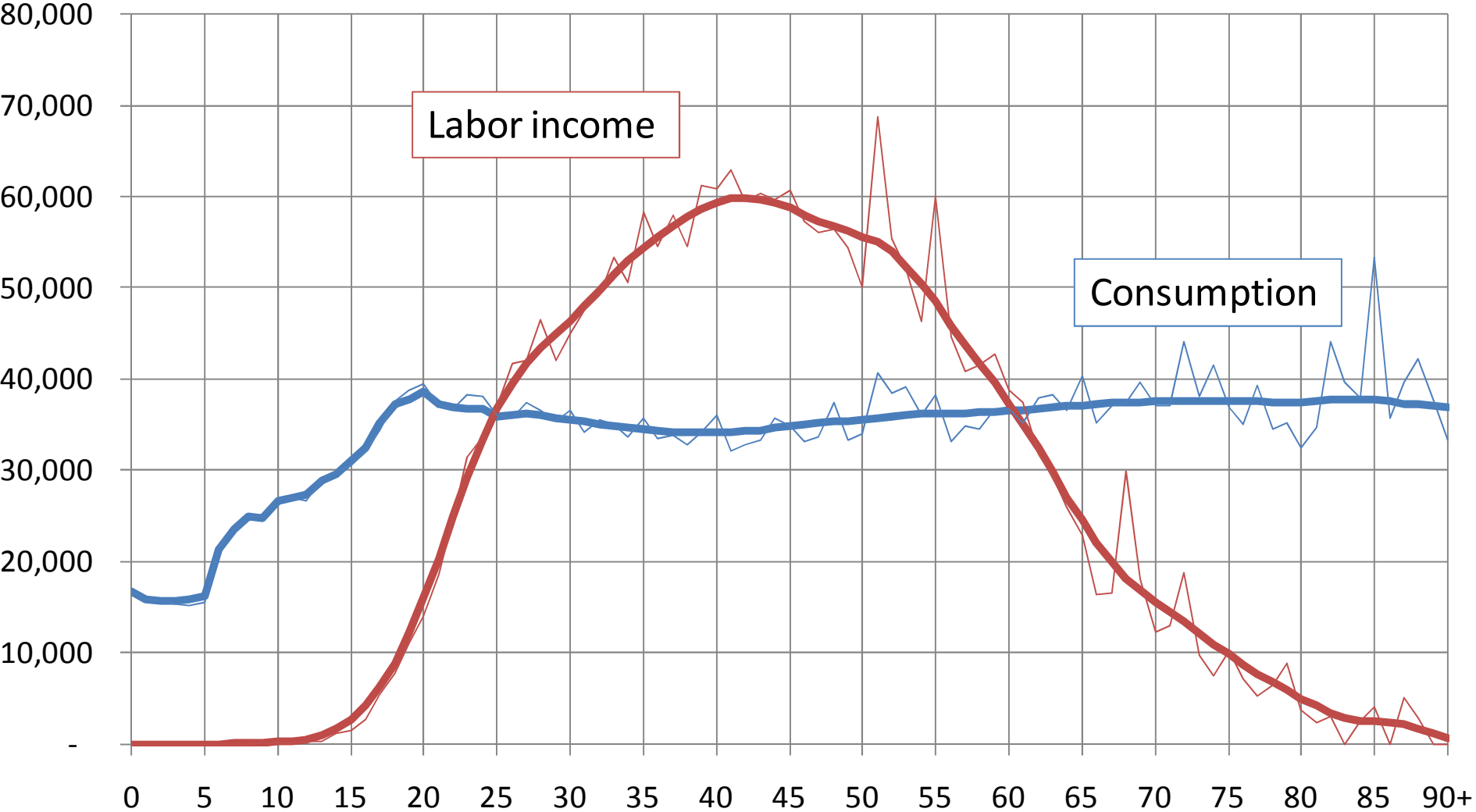
Philippines NTA

J.M. Ian Salas

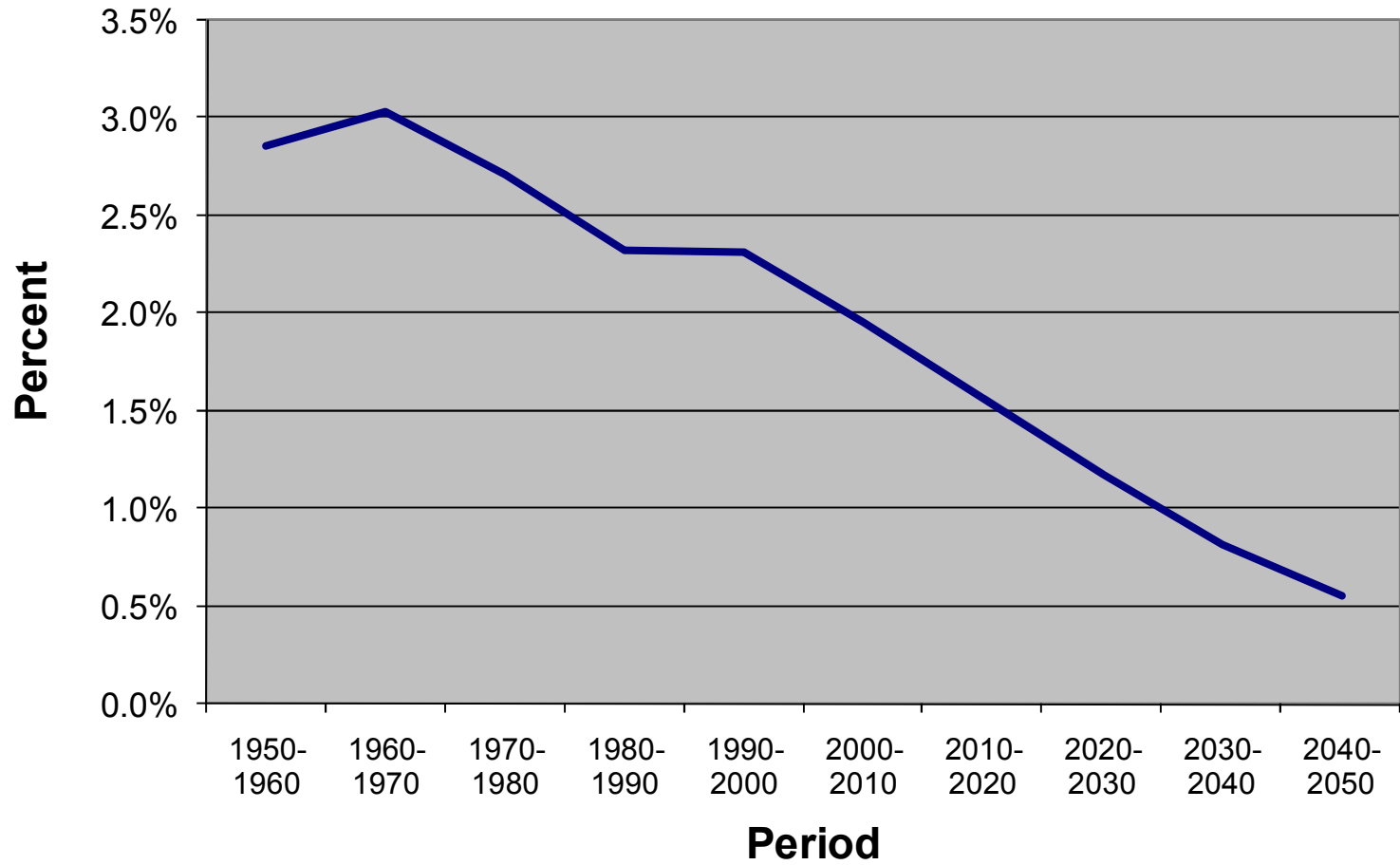
01 Jul 2008

Mean per capita age profiles for consumption and labor income: Philippines, 1999

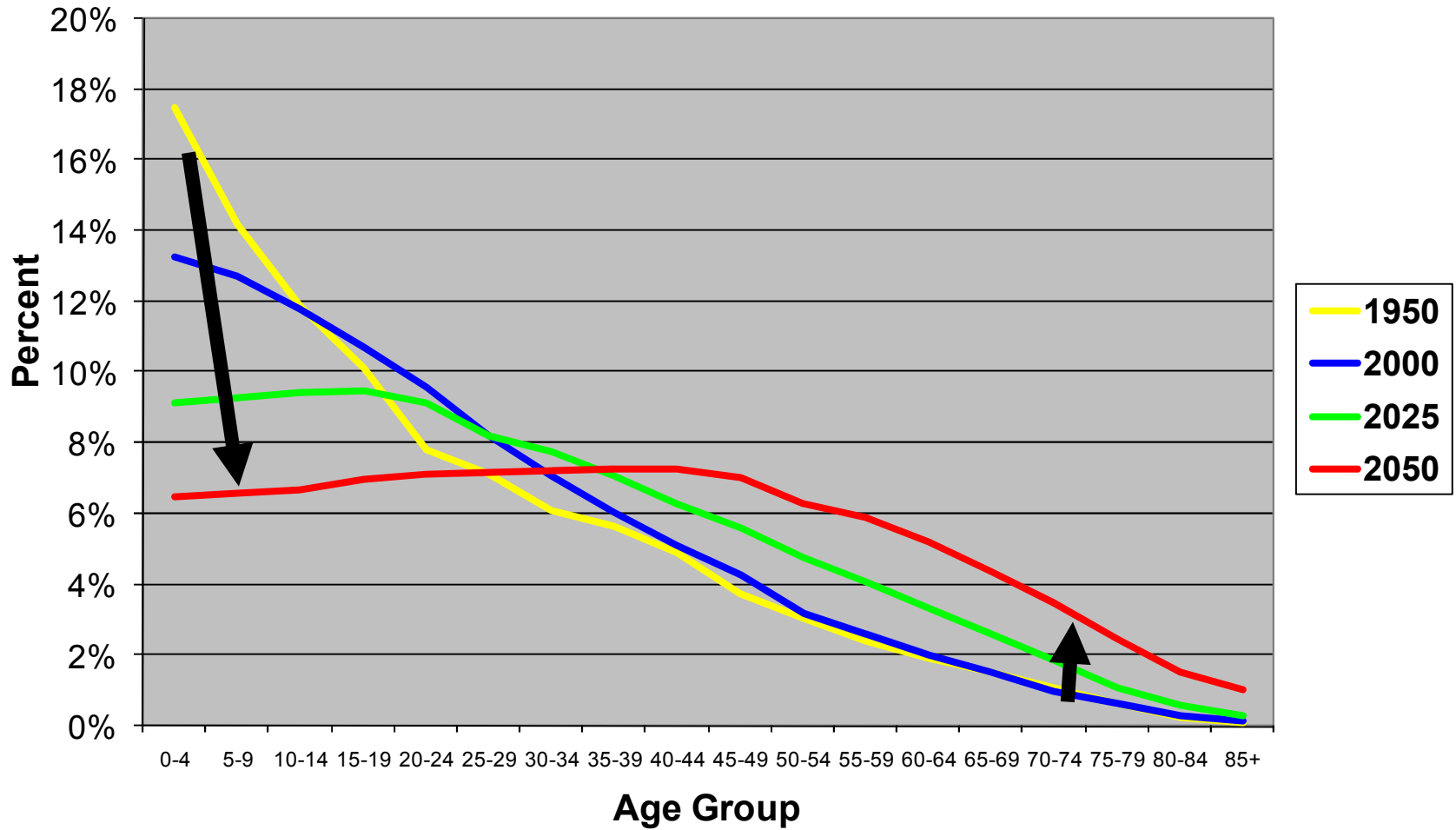
Pesos



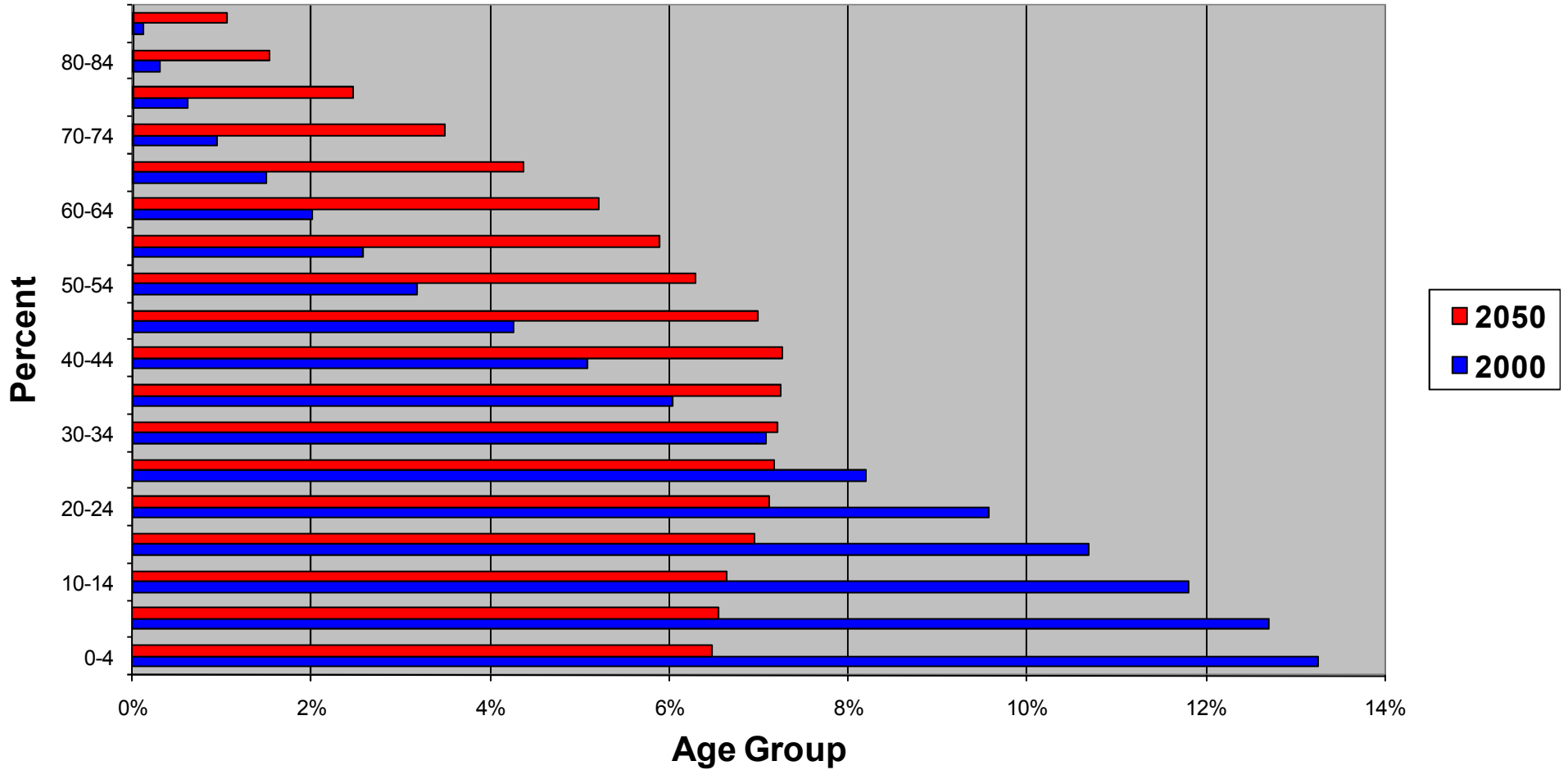
Average Annual Population Growth by Period: Philippines, Actual 1950-2000 and Projected 2000-2050



Population Distribution by Age Group: Philippines - 1950, 2000, 2025 and Estimated 2050



Population Pyramid (Age Distribution): Philippines, 2000 and Projected 2050



Main improvements

- Remittances now divided into compensation from ROW and current transfers from ROW using breakdown from Balance of Payments (BOP) account.
- Income and outlay account from the SNA (unpublished) now fully threshed out to correspond with NTA aggregates.
- Micro survey and macro controls now in sync with respect to inter- and intra-household transfers.

SNA and BOP, 1999

In Million Pesos

- Compensation from ROW = 222,793
- Compensation to ROW = 0
- Average exchange rate = 39 pesos/dollar:
Compensation from ROW = \$5,699

In Million Dollars

- Income receipts, total = 2,723
 - [A] Income receipts, comp. of employees incl. border, seasonal, and other workers = 1,481
- Current transfer receipts, total = 5,969
 - [B] Current transfer receipts, worker remittances = 5,212
- Corresponding payments = 0
- Overseas worker cash remittances = 6,022
- [A] + [B] = 6,693 (includes in kind)
- $[B]/([A]+[B]) = 78\%$

NTA Table: Philippines, 1999

	Total	Domestic by age						Foreign
		Total	0-19	20-29	30-49	50-64	65+	
Lifecycle Deficit	695,285	695,285	844,632	104,721	(273,851)	(38,623)	58,405	-
Consumption	2,266,934	2,266,934	900,631	486,220	579,055	205,434	95,594	-
Public	389,238	389,238	231,637	55,802	66,528	23,956	11,315	-
Education	88,134	88,134	84,057	4,077	-	-	-	-
Health	29,621	29,621	15,020	3,551	5,978	3,118	1,953	-
Other	271,483	271,483	132,559	48,174	60,550	20,839	9,361	-
Private	1,877,696	1,877,696	668,994	430,418	512,527	181,478	84,280	-
Education	91,409	91,409	70,894	20,516	-	-	-	-
Health	41,579	41,579	17,004	5,029	7,718	6,437	5,389	-
Housing	115,070	115,070	33,595	26,516	33,993	13,648	7,318	-
Durables	-	-	-	-	-	-	-	-
Other, net of indirect taxes	1,629,638	1,629,638	547,501	378,356	470,816	161,392	71,573	-
Less: Labor Income	1,571,649	1,571,649	55,998	381,498	852,906	244,057	37,189	-
Compensation	856,936	856,936	37,132	258,274	446,912	107,701	6,917	-
Earnings	780,791	780,791	34,735	240,395	403,832	95,875	5,954	-
Benefits	76,144	76,144	2,397	17,879	43,081	11,825	963	-
Self-employment	714,713	714,713	18,867	123,224	405,993	136,357	30,273	-
Entrepreneurial activities	668,359	668,359	16,848	114,248	381,951	127,598	27,713	-
Household production	46,354	46,354	2,019	8,976	24,042	8,759	2,559	-

NTA Table: Philippines, 1999

	Total	Domestic by age						Foreign
		Total	0-19	20-29	30-49	50-64	65+	
Lifecycle Reallocations	695,285	695,285	844,632	104,721	(273,851)	(38,623)	58,405	-
Transfers	466,117	232,115	847,538	71,289	(525,872)	(163,484)	2,644	234,001
Public	1,886	0	158,735	(31,975)	(91,052)	(34,673)	(1,036)	1,886
Inflows	449,794	447,186	235,485	58,942	77,154	42,396	33,209	2,608
Outflows	(447,908)	(447,186)	(76,750)	(90,917)	(168,205)	(77,069)	(34,244)	(722)
Transfers surplus(+)/deficit	(79,402)	(79,402)	(13,532)	(16,214)	(29,973)	(13,651)	(6,031)	-
Education	-	-	67,498	(12,769)	(31,555)	(15,685)	(7,489)	-
Inflows	88,134	88,134	84,057	4,077	-	-	-	-
Outflows	(88,134)	(88,134)	(16,559)	(16,846)	(31,555)	(15,685)	(7,489)	-
Health	0	0	9,455	(2,110)	(4,627)	(2,154)	(564)	-
Inflows	29,621	29,621	15,020	3,551	5,978	3,118	1,953	-
Outflows	(29,621)	(29,621)	(5,565)	(5,662)	(10,605)	(5,272)	(2,517)	-
Pensions	-	-	(1,910)	(14,779)	(16,098)	11,599	21,188	-
Inflows	48,855	48,855	-	-	9,493	17,779	21,583	-
Outflows (obligated)	(48,855)	(48,855)	(1,910)	(14,779)	(25,591)	(6,180)	(395)	-
Transfers surplus(+)/deficit	(12,921)	(12,921)	(505)	(3,909)	(6,768)	(1,634)	(104)	-
Other, In-kind	0	0	81,552	(3,718)	(36,649)	(27,476)	(13,709)	-
Inflows	271,483	271,483	132,559	48,174	60,550	20,839	9,361	-
Outflows	(271,483)	(271,483)	(51,007)	(51,892)	(97,199)	(48,315)	(23,070)	-
Other, Cash	1,886	0	2,140	1,402	(2,123)	(957)	(462)	1,886
Inflows	11,701	9,093	3,849	3,140	1,132	661	311	2,608
Outflows	(9,815)	(9,093)	(1,708)	(1,738)	(3,256)	(1,618)	(773)	(722)

NTA Table: Philippines, 1999

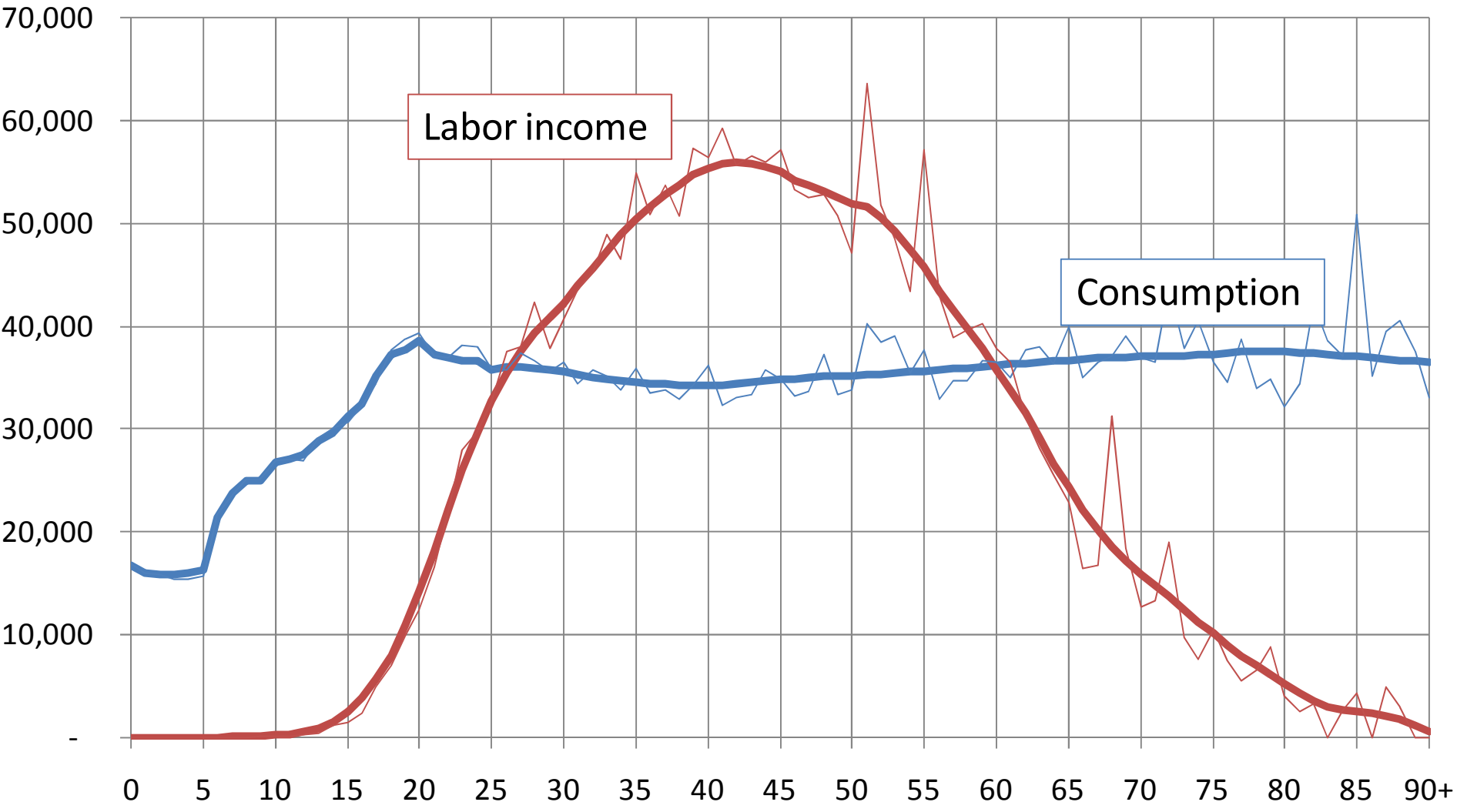
	Total	Domestic by age						Foreign
		Total	0-19	20-29	30-49	50-64	65+	
Lifecycle Reallocations	695,285	695,285	844,632	104,721	(273,851)	(38,623)	58,405	-
Transfers	466,117	232,115	847,538	71,289	(525,872)	(163,484)	2,644	234,001
Private	464,231	232,115	688,803	103,265	(434,820)	(128,811)	3,680	232,115
Inter-household	464,231	232,115	-	23,266	109,087	61,213	38,550	232,115
Inflows	535,839	298,617	-	30,845	141,388	79,140	47,244	237,222
Outflows	(71,609)	(66,502)	-	(7,579)	(32,301)	(17,927)	(8,694)	(5,107)
Domestic	0	0	-	40	(3,859)	485	3,334	-
Inflows	61,395	61,395	-	7,037	25,962	17,035	11,360	-
Outflows	(61,395)	(61,395)	-	(6,997)	(29,821)	(16,550)	(8,026)	-
Rest of the World	464,231	232,115	-	23,225	112,946	60,728	35,216	232,115
Inflows	474,445	237,222	-	23,807	115,426	62,105	35,884	237,222
Outflows	(10,214)	(5,107)	-	(582)	(2,481)	(1,377)	(668)	(5,107)

NTA Table: Philippines, 1999

	Total	Domestic by age						Foreign
		Total	0-19	20-29	30-49	50-64	65+	
Lifecycle Reallocations	695,285	695,285	844,632	104,721	(273,851)	(38,623)	58,405	-
Transfers	466,117	232,115	847,538	71,289	(525,872)	(163,484)	2,644	234,001
Private	464,231	232,115	688,803	103,265	(434,820)	(128,811)	3,680	232,115
Intra-household	0	0	688,803	79,999	(543,907)	(190,024)	(34,870)	-
Inflows	1,313,756	1,313,756	705,875	265,858	206,942	84,417	50,664	-
Outflows	(1,313,756)	(1,313,756)	(17,072)	(185,859)	(750,849)	(274,442)	(85,535)	-
Education	(0)	(0)	70,744	8,992	(52,508)	(23,025)	(4,203)	-
Inflows	88,098	88,098	71,566	16,532	-	-	-	-
Outflows	(88,098)	(88,098)	(823)	(7,540)	(52,508)	(23,025)	(4,203)	-
Health	0	0	14,899	(471)	(9,235)	(4,097)	(1,096)	-
Inflows	24,394	24,394	15,102	2,823	2,228	2,001	2,240	-
Outflows	(24,394)	(24,394)	(203)	(3,294)	(11,463)	(6,098)	(3,337)	-
Housing	(0)	(0)	32,475	17,291	(21,964)	(18,797)	(9,006)	-
Inflows	83,863	83,863	32,706	22,984	19,617	5,762	2,795	-
Outflows	(83,863)	(83,863)	(230)	(5,692)	(41,581)	(24,559)	(11,801)	-
Durables								-
Inflows								-
Outflows								-
Other	0	0	574,869	74,235	(453,666)	(162,132)	(33,306)	-
Inflows	1,025,395	1,025,395	586,242	216,834	141,831	48,773	31,715	-
Outflows	(1,025,395)	(1,025,395)	(11,373)	(142,599)	(595,497)	(210,905)	(65,021)	-
Saving	(0)	(0)	(4,184)	(20,048)	(6,534)	18,026	12,741	-
Inflows	92,005	92,005	259	6,685	43,266	27,881	13,914	-
Outflows	(92,005)	(92,005)	(4,443)	(26,733)	(49,800)	(9,855)	(1,173)	-
Asset-based Reallocations	229,168	463,170	(2,906)	33,432	252,021	124,861	55,761	

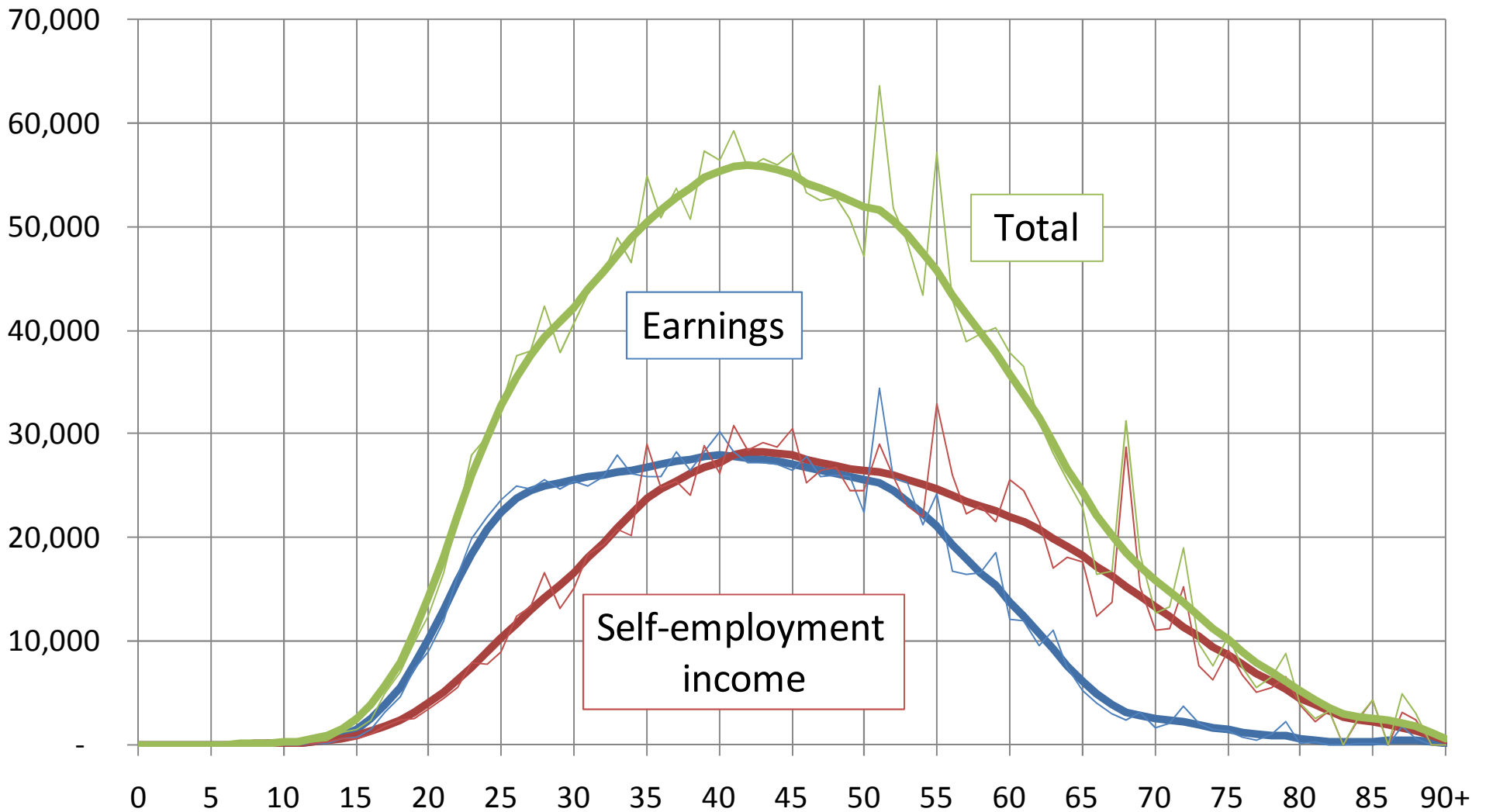
Mean per capita age profiles for consumption and labor income: Philippines, 1999

Pesos



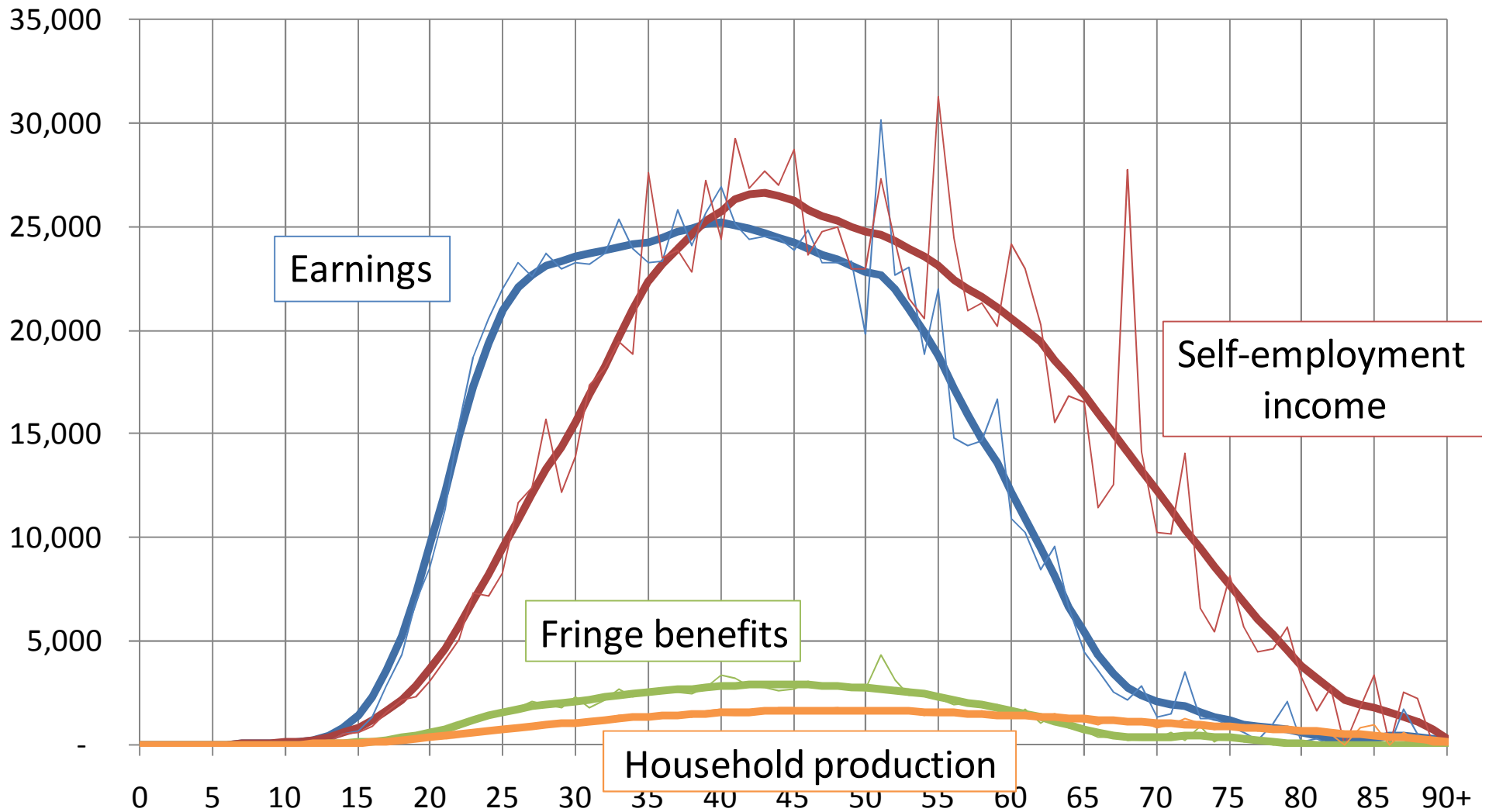
Mean per capita age profiles for labor income: Philippines, 1999

Pesos



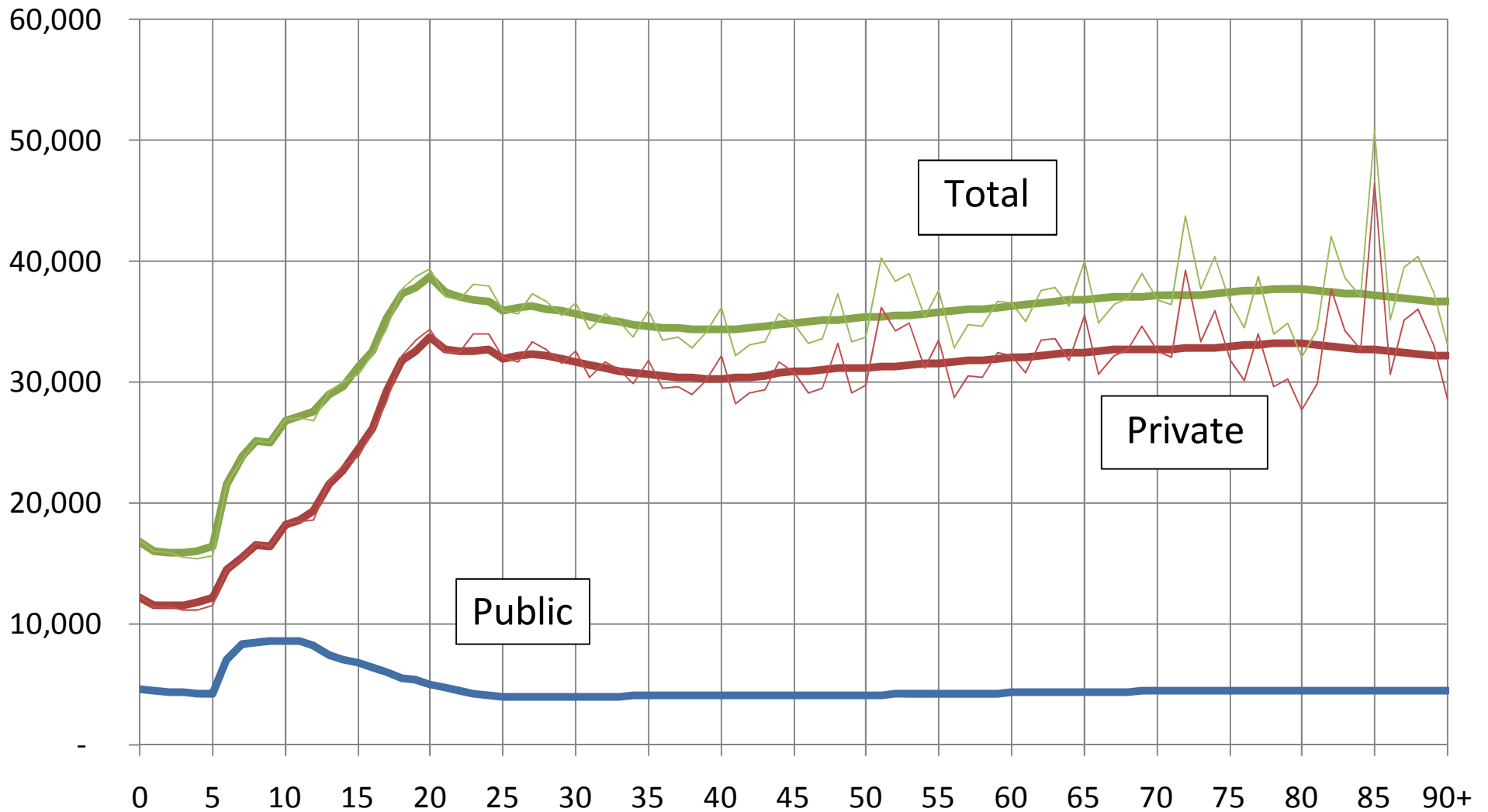
Mean per capita age profiles for labor income: Philippines, 1999

Pesos



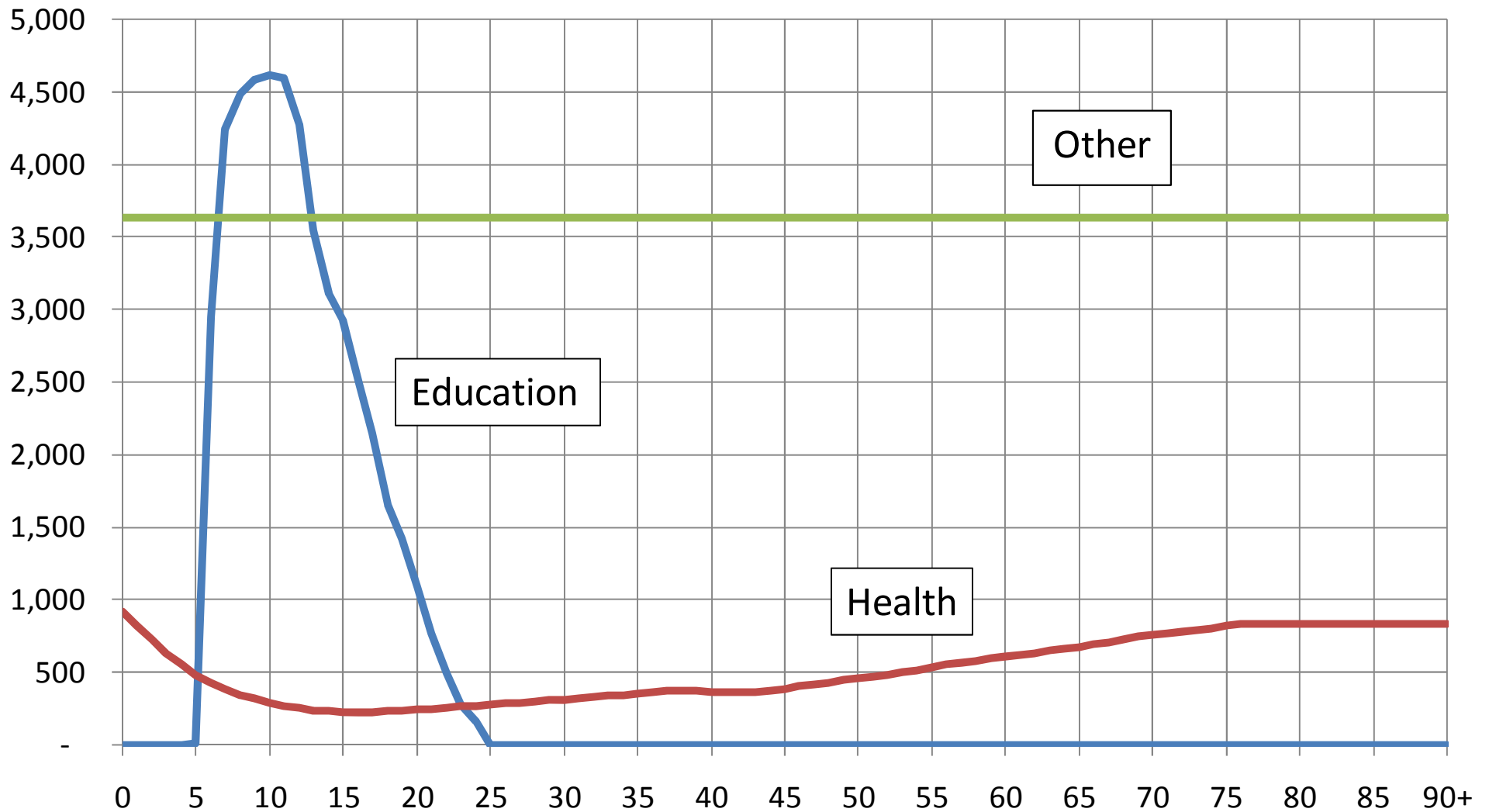
Mean per capita age profiles for consumption: Philippines, 1999

Pesos



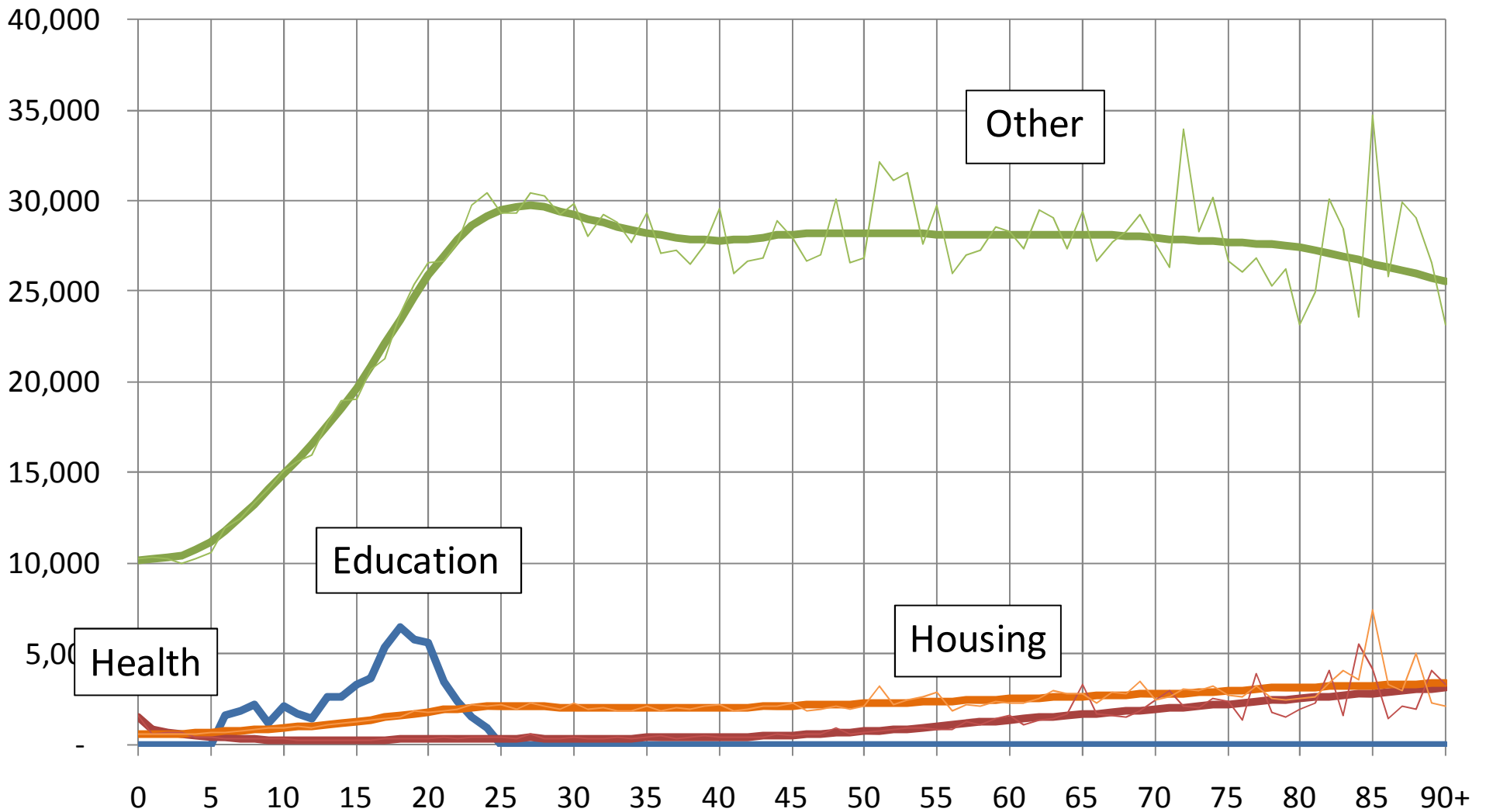
Mean per capita age profiles for public consumption: Philippines, 1999

Pesos



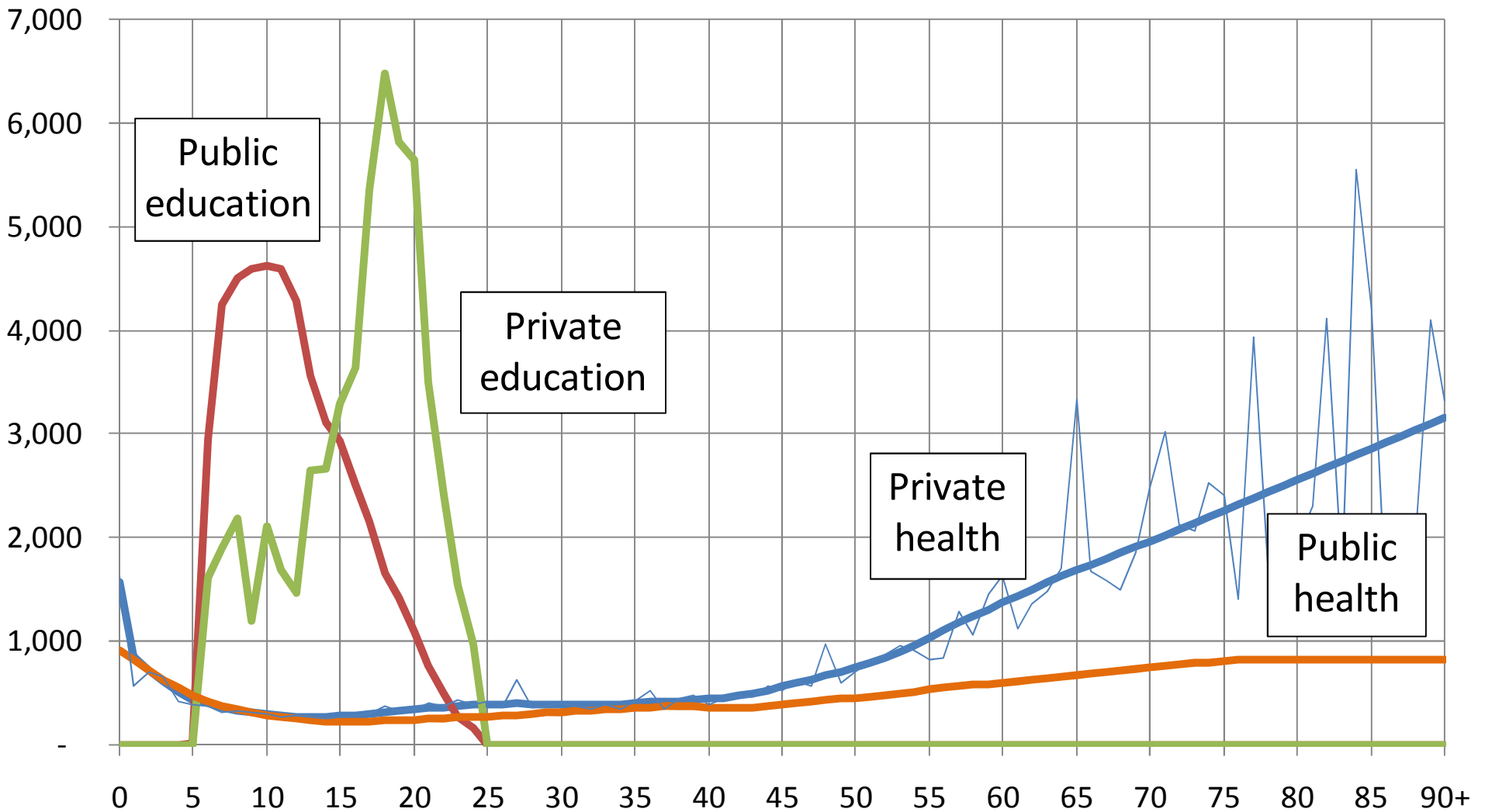
Mean per capita age profiles for private consumption: Philippines, 1999

Pesos



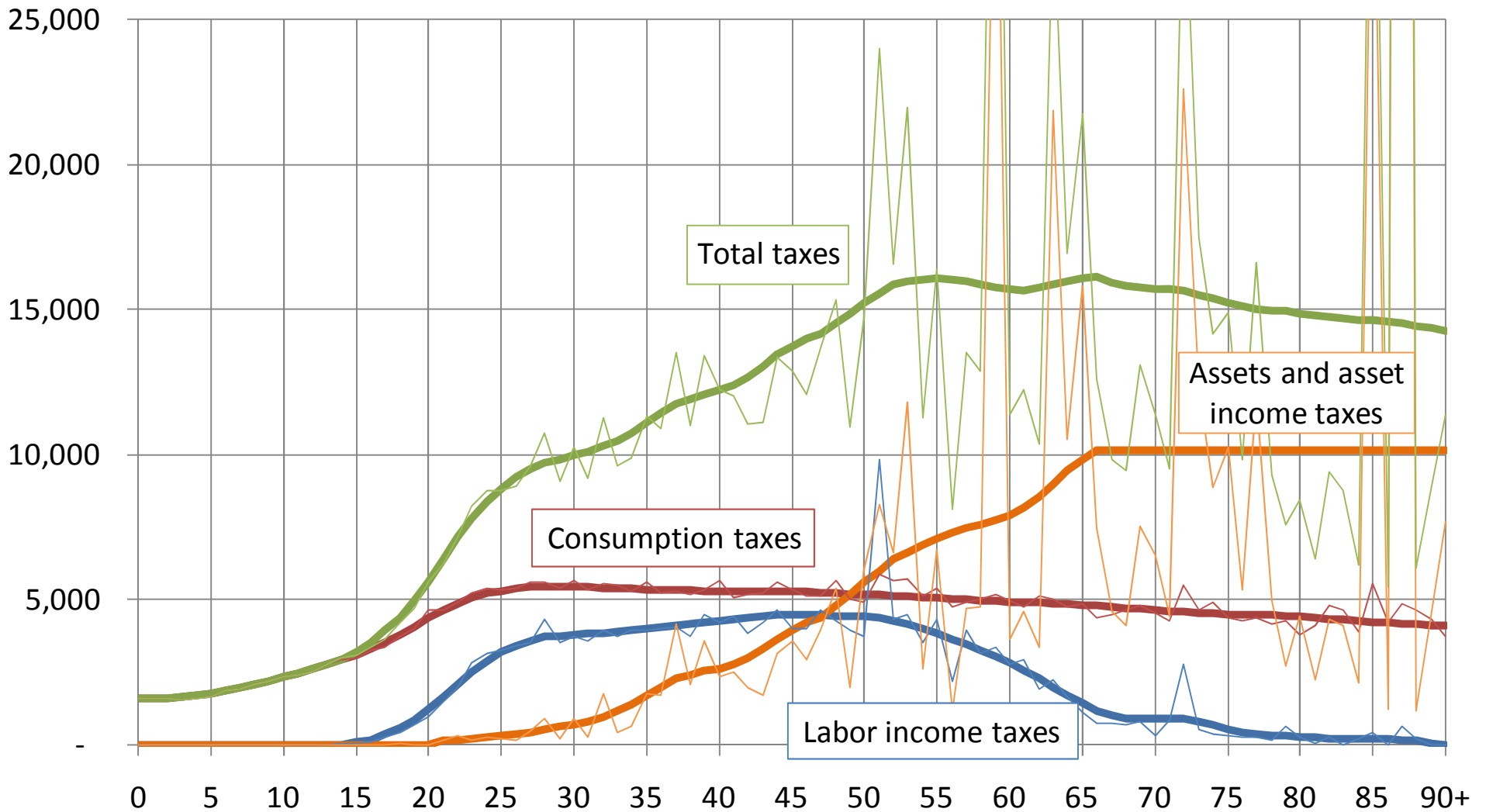
Comparative mean per capita age profiles for public and private consumption: Philippines, 1999

Pesos



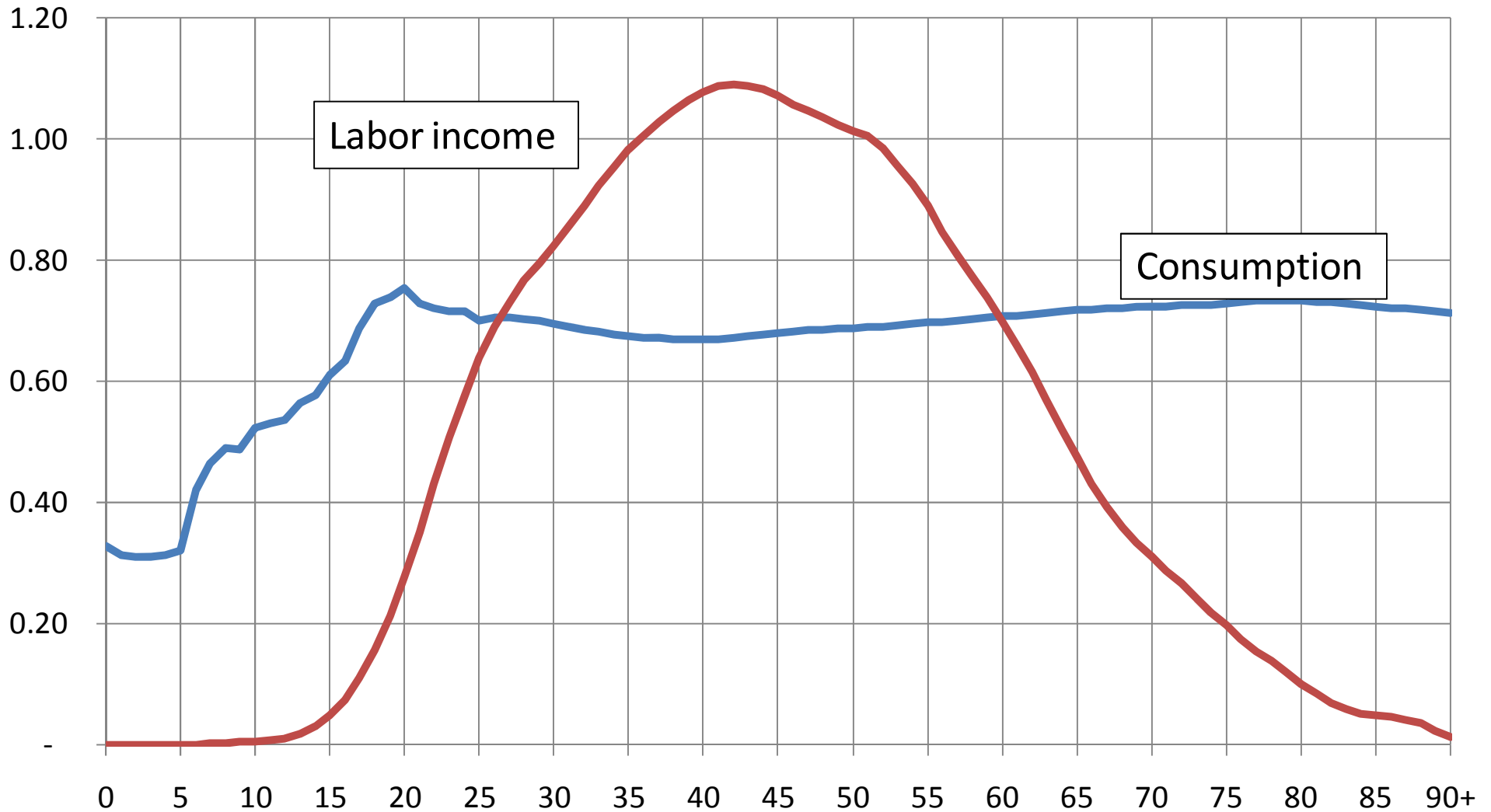
Mean per capita age profiles for general taxes: Philippines, 1999

Pesos



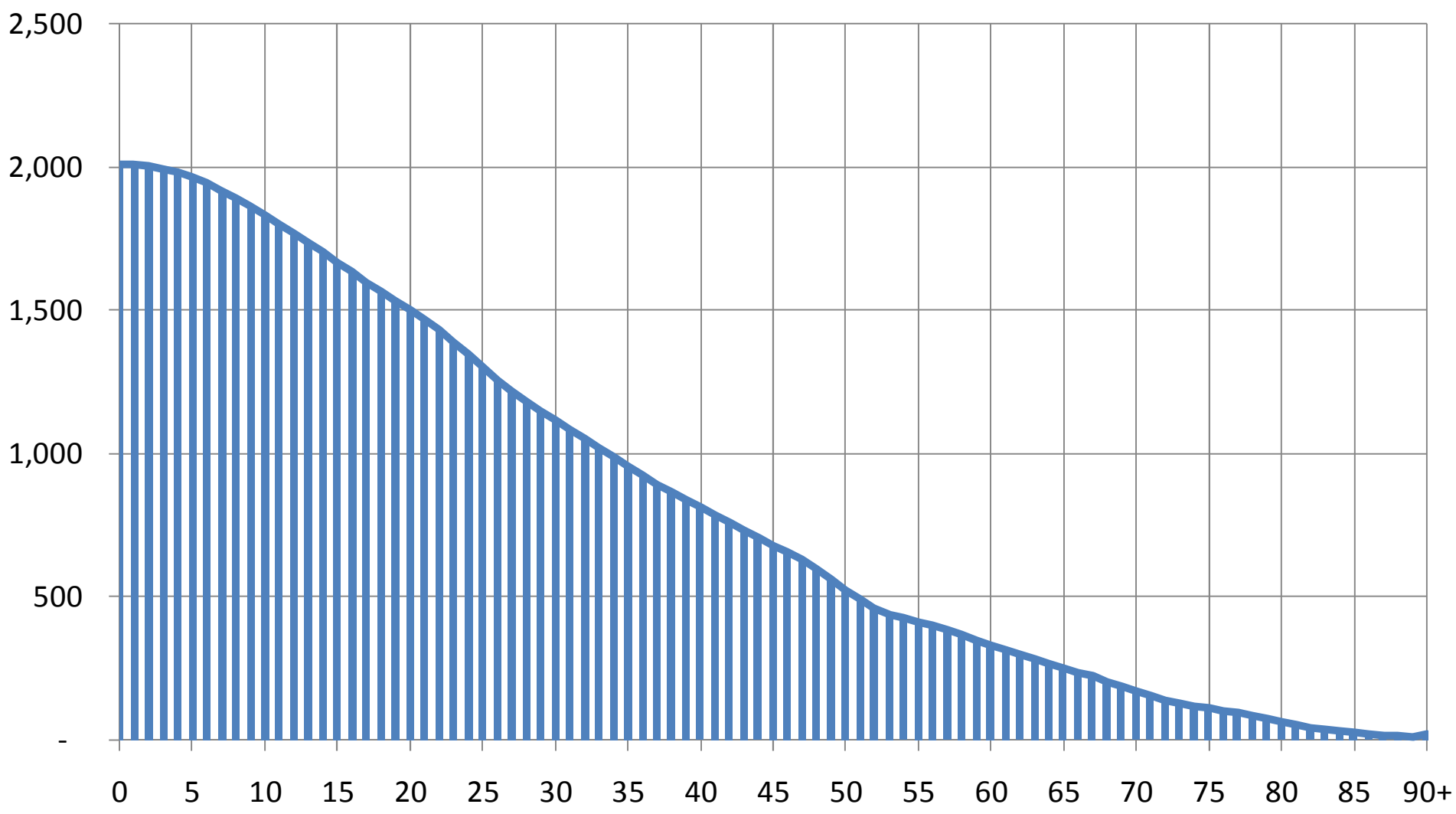
Scale relative
to average YL
for age 30-49

Mean per capita age profiles for consumption and labor income, standardized: Philippines, 1999



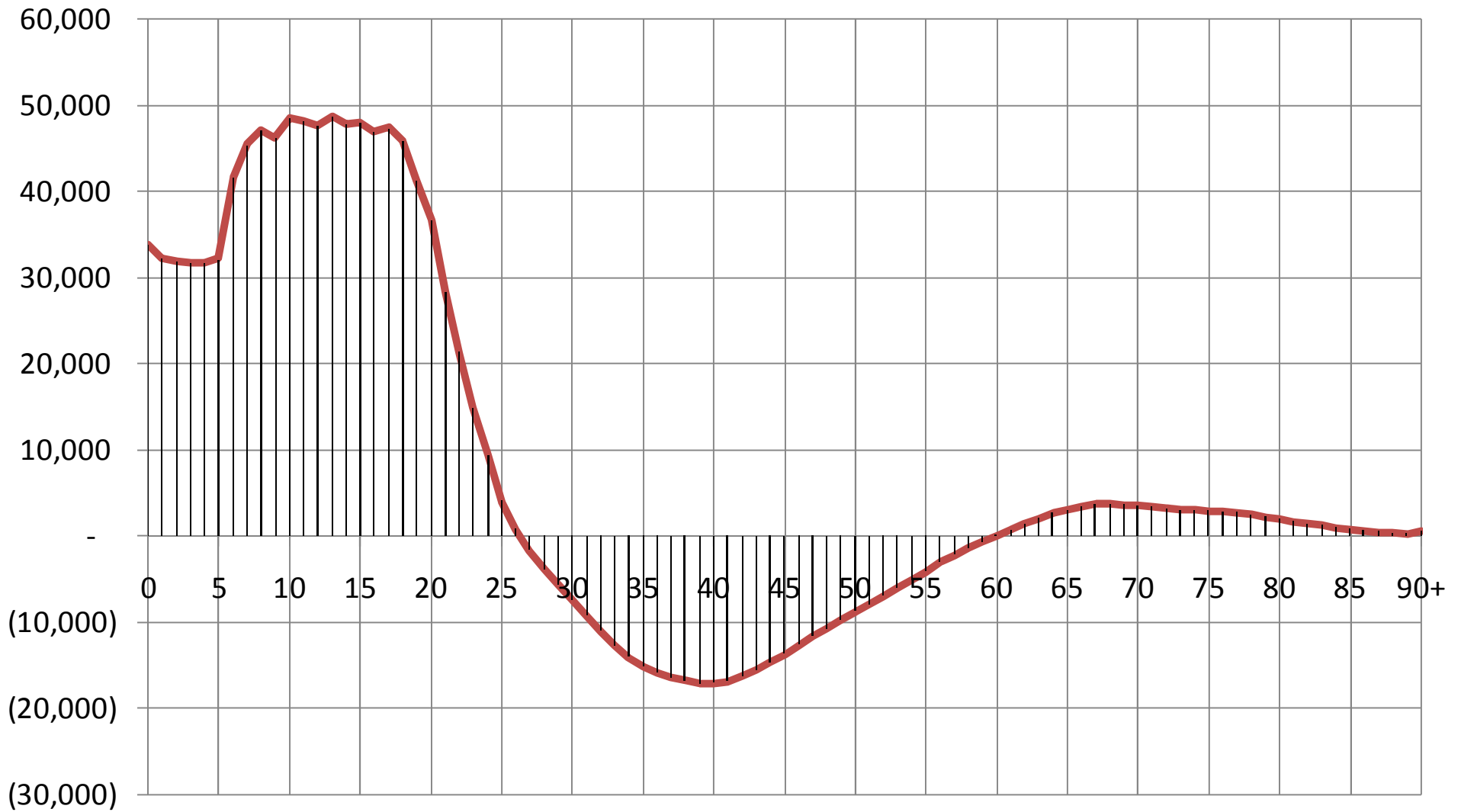
Population age structure (UN data): Philippines, 1999

Thousand
Persons



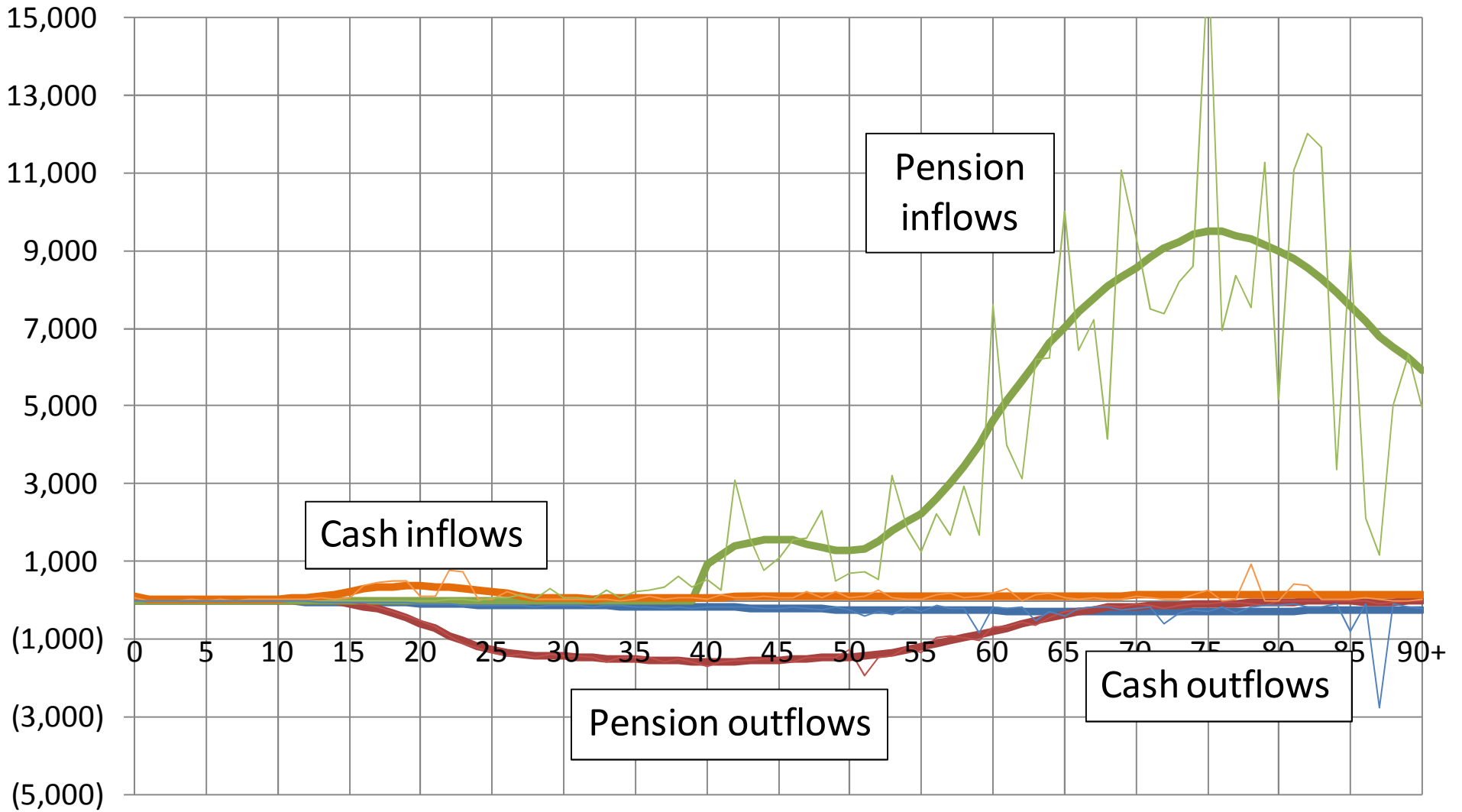
Age profile of aggregate lifecycle deficit: Philippines, 1999

Million
Pesos



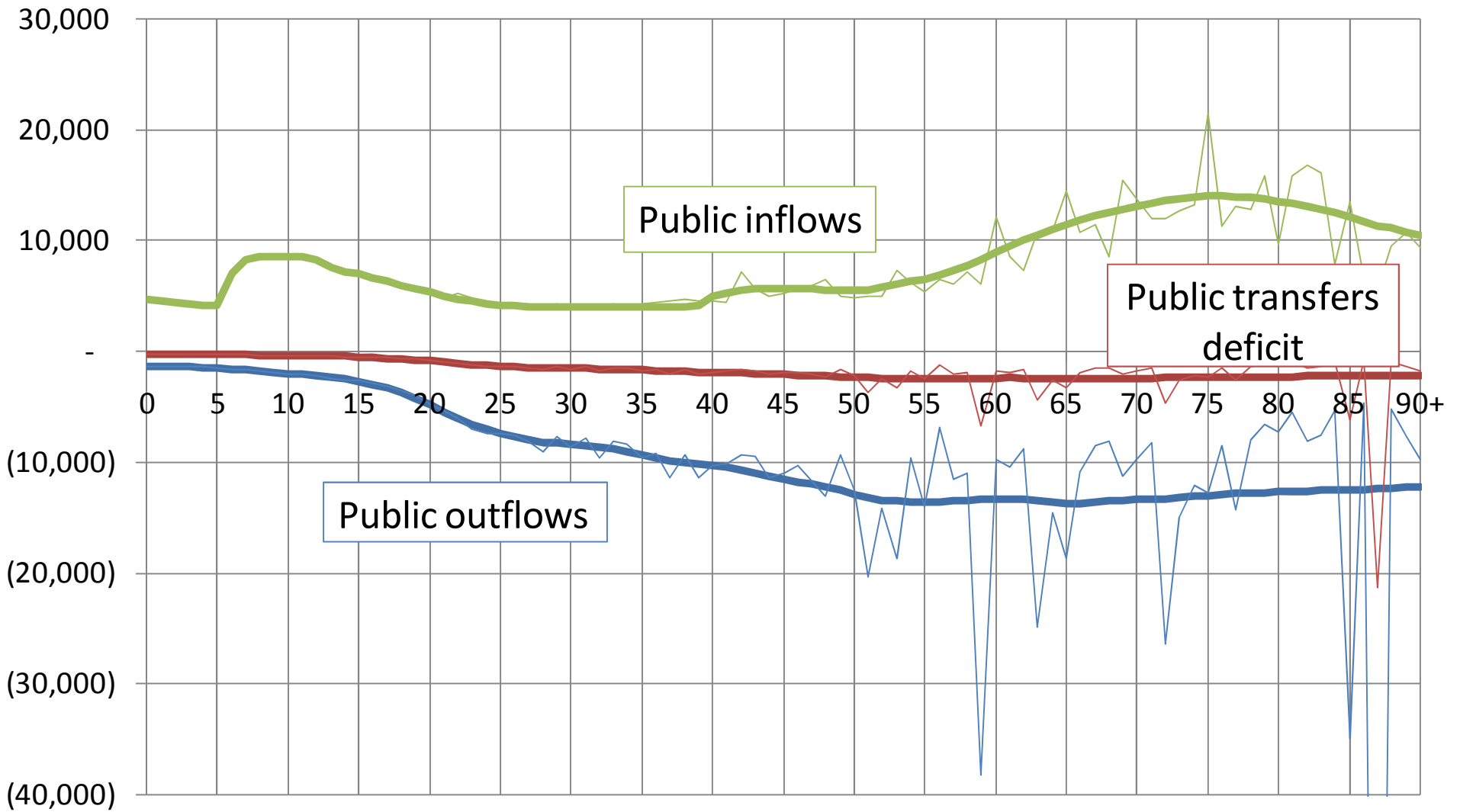
Mean per capita age profiles for public transfers: Philippines, 1999

Pesos



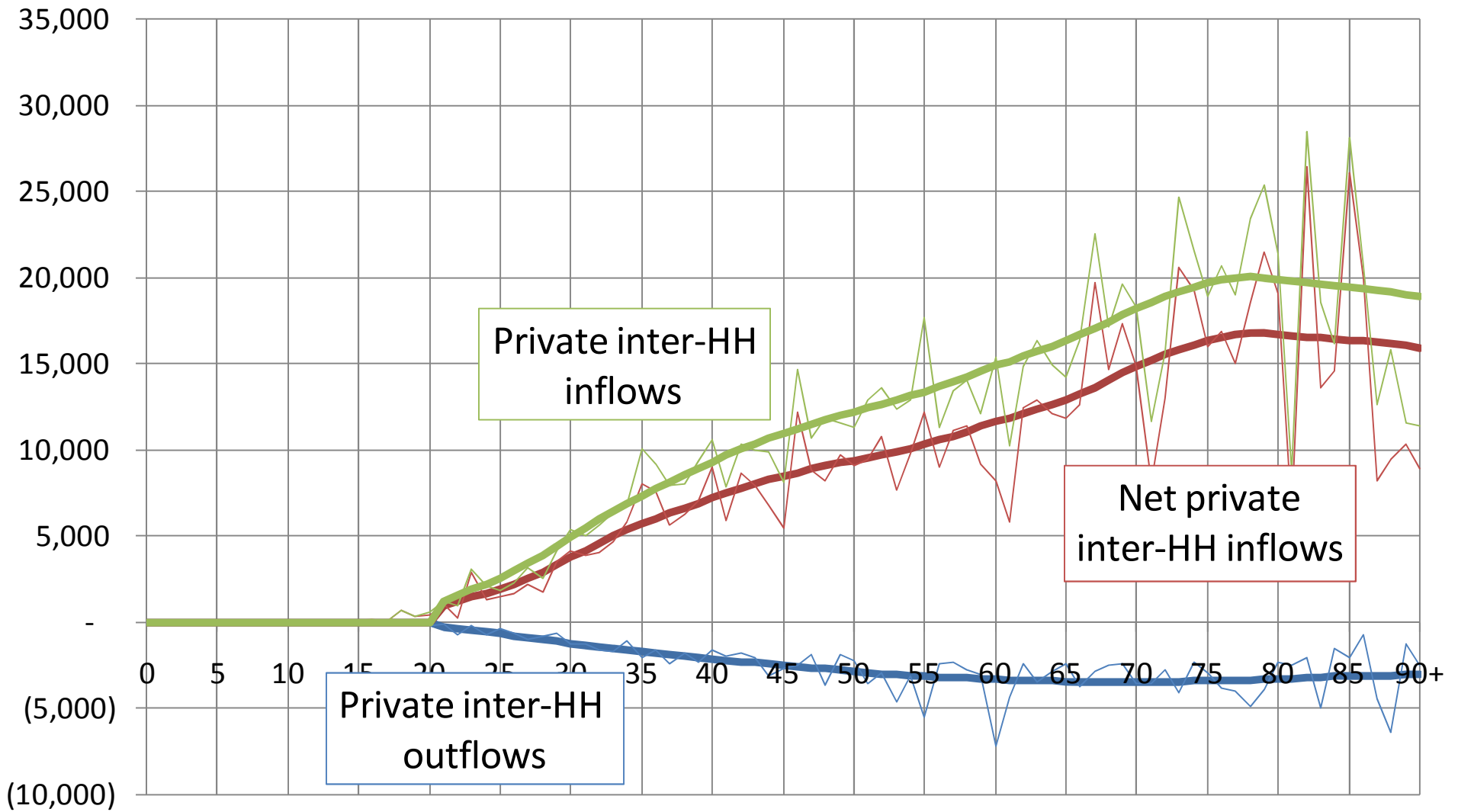
Mean per capita age profiles for public transfers: Philippines, 1999

Pesos



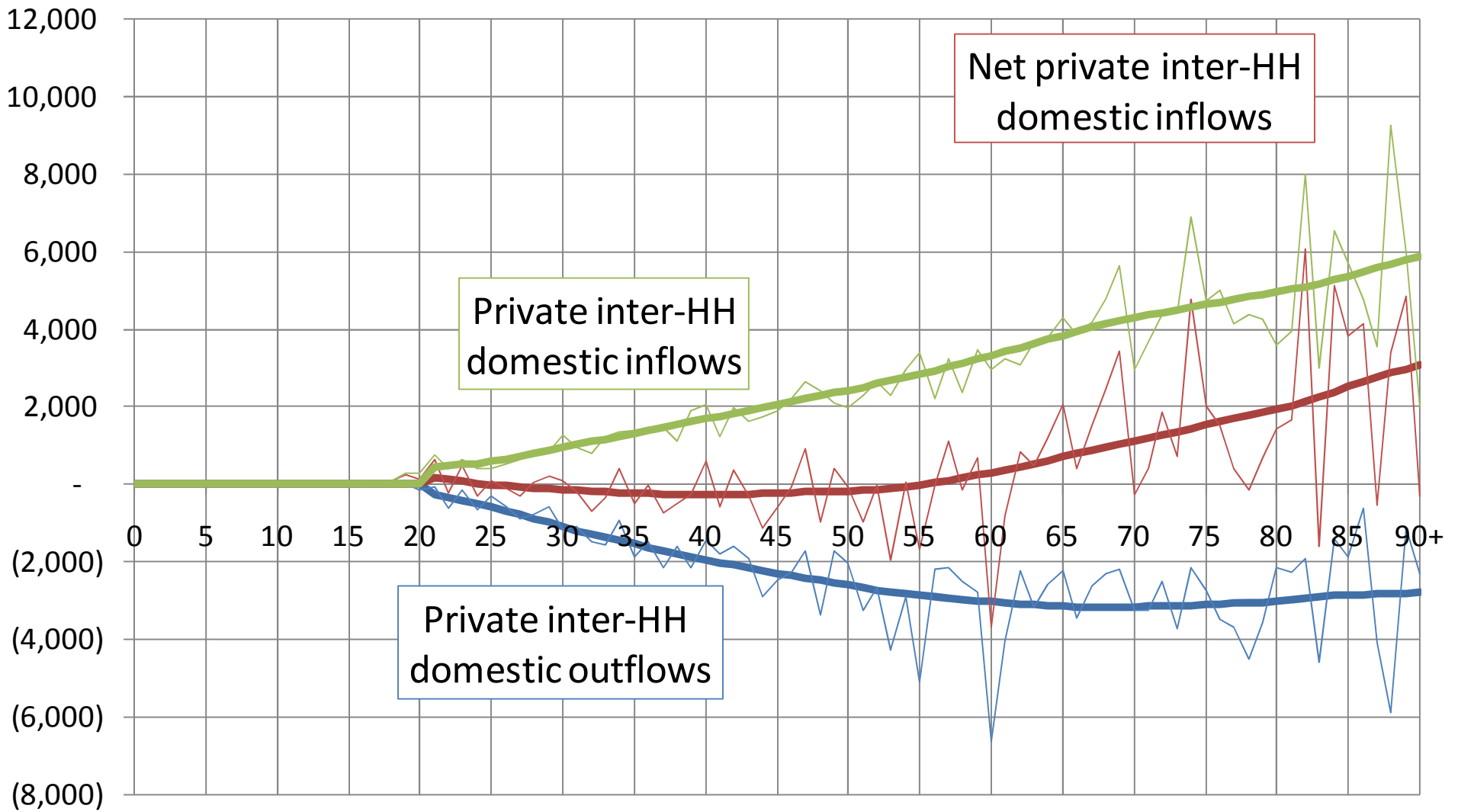
Mean per capita age profiles for private inter-HH transfers (domestic and ROW combined): Philippines, 1999

Pesos



Mean per capita age profiles for private inter-HH transfers (domestic): Philippines, 1999

Pesos



Mean per capita age profiles for private inter-HH transfers (rest of the world): Philippines, 1999

Pesos

25,000

20,000

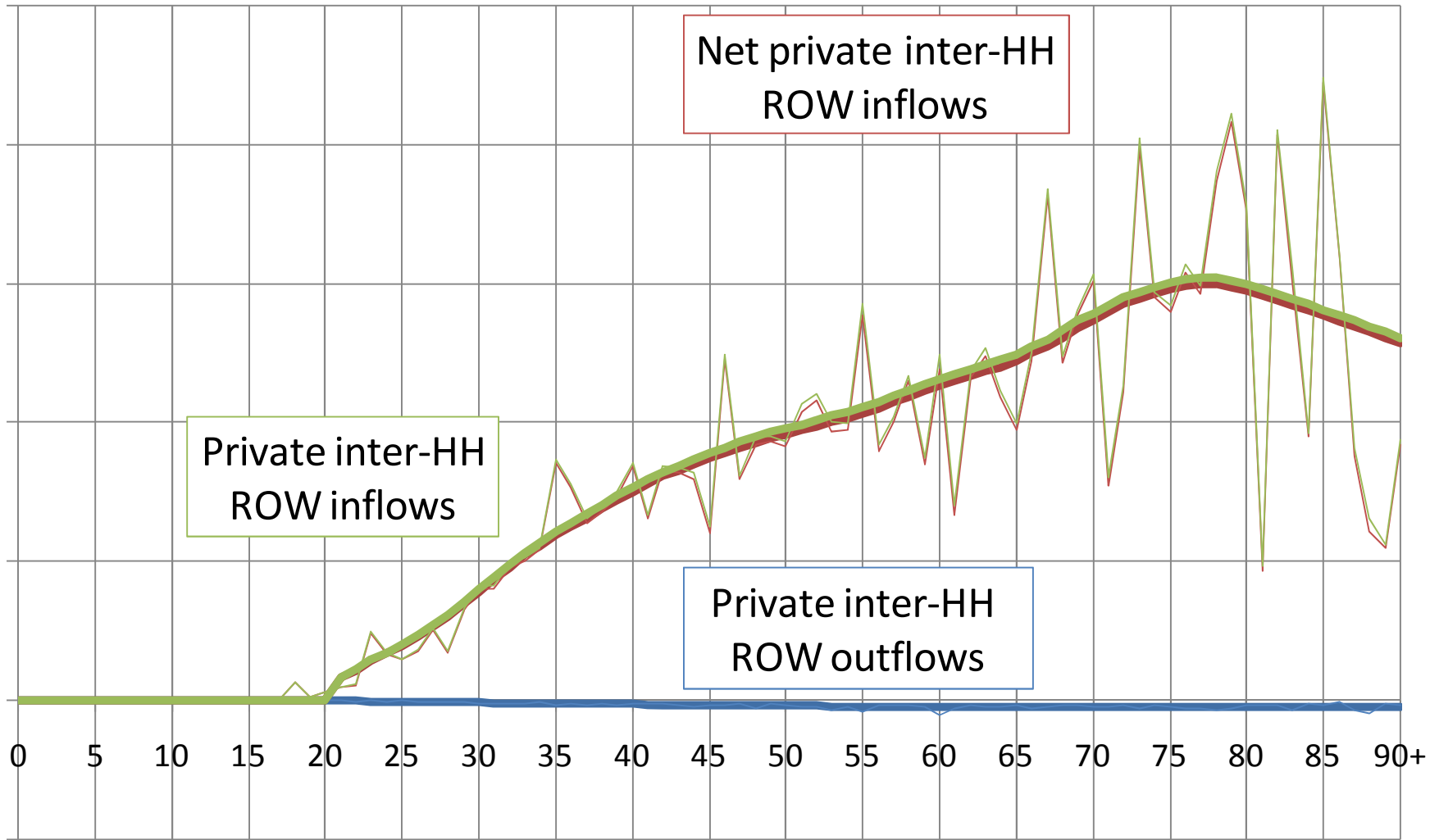
15,000

10,000

5,000

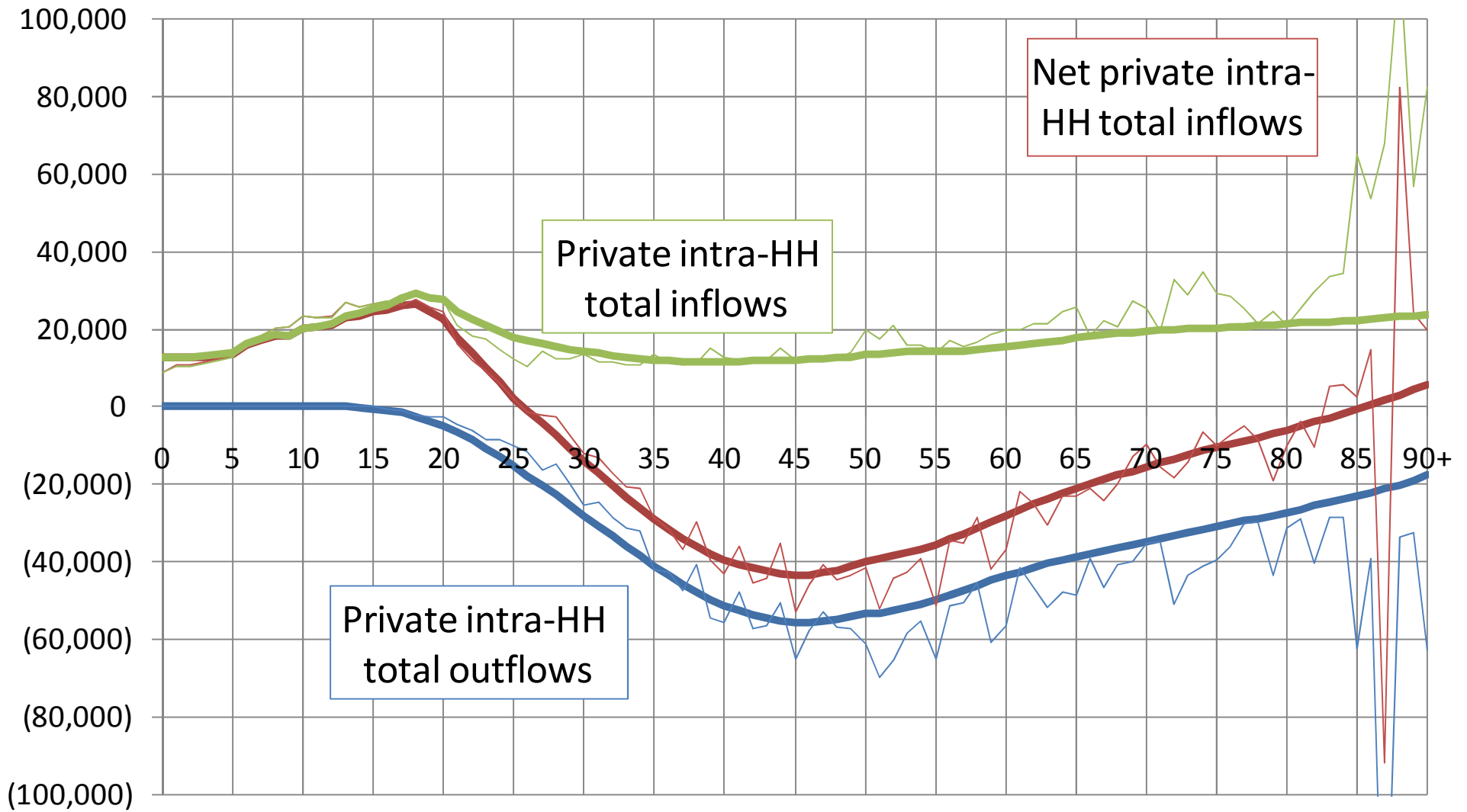
-

(5,000)



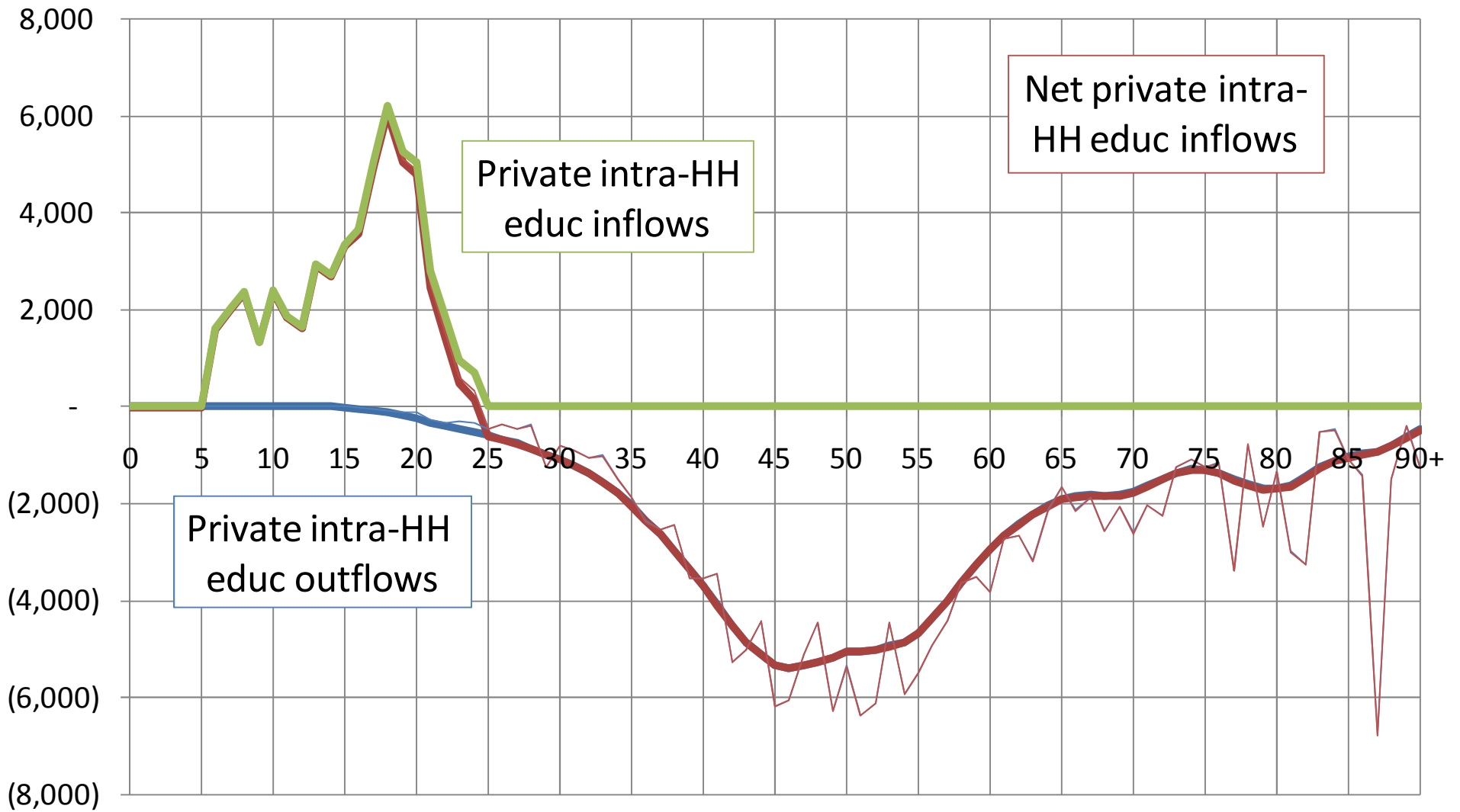
Mean per capita age profiles for private intra-HH transfers: Philippines, 1999

Pesos



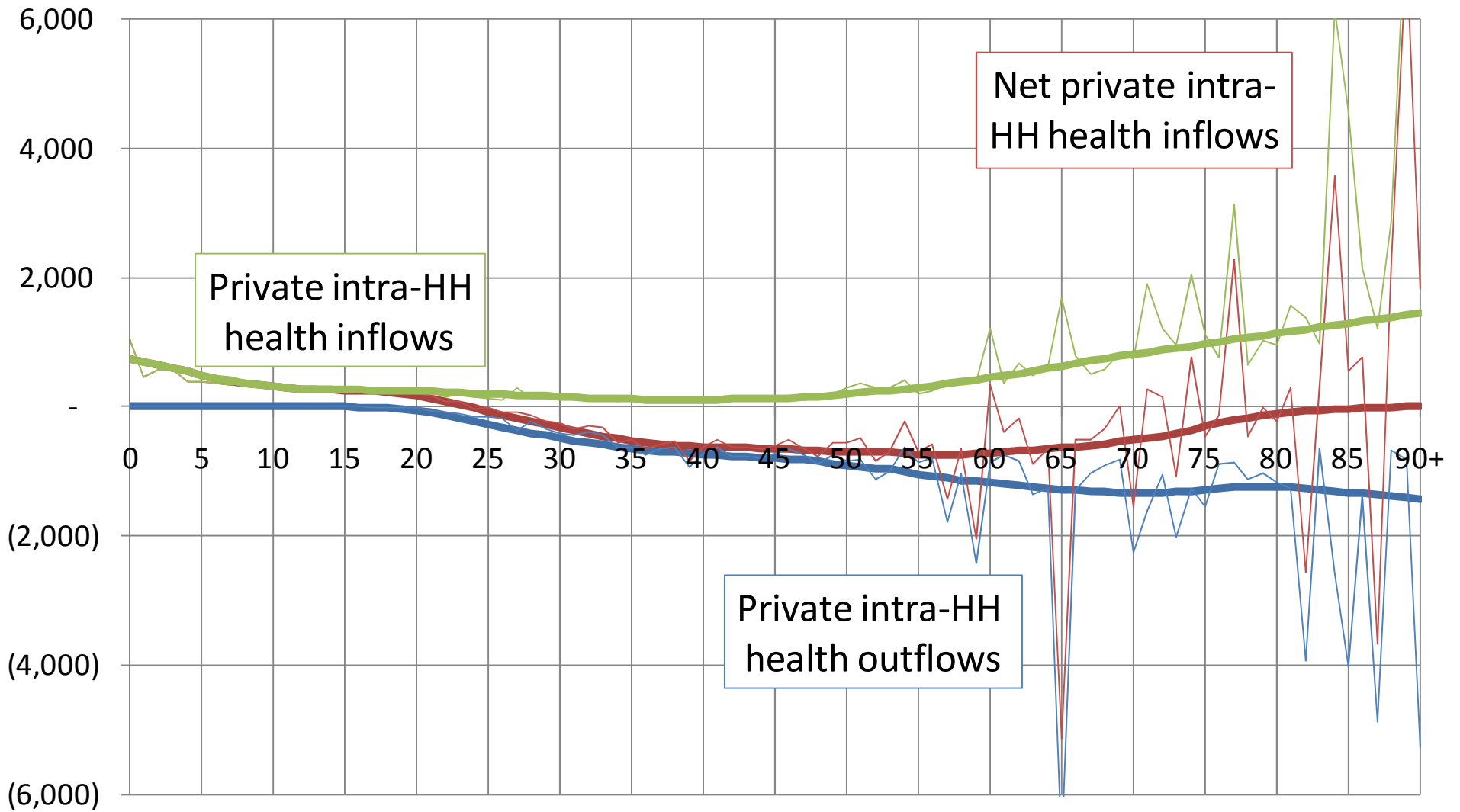
Mean per capita age profiles for private intra-HH transfers in education: Philippines, 1999

Pesos



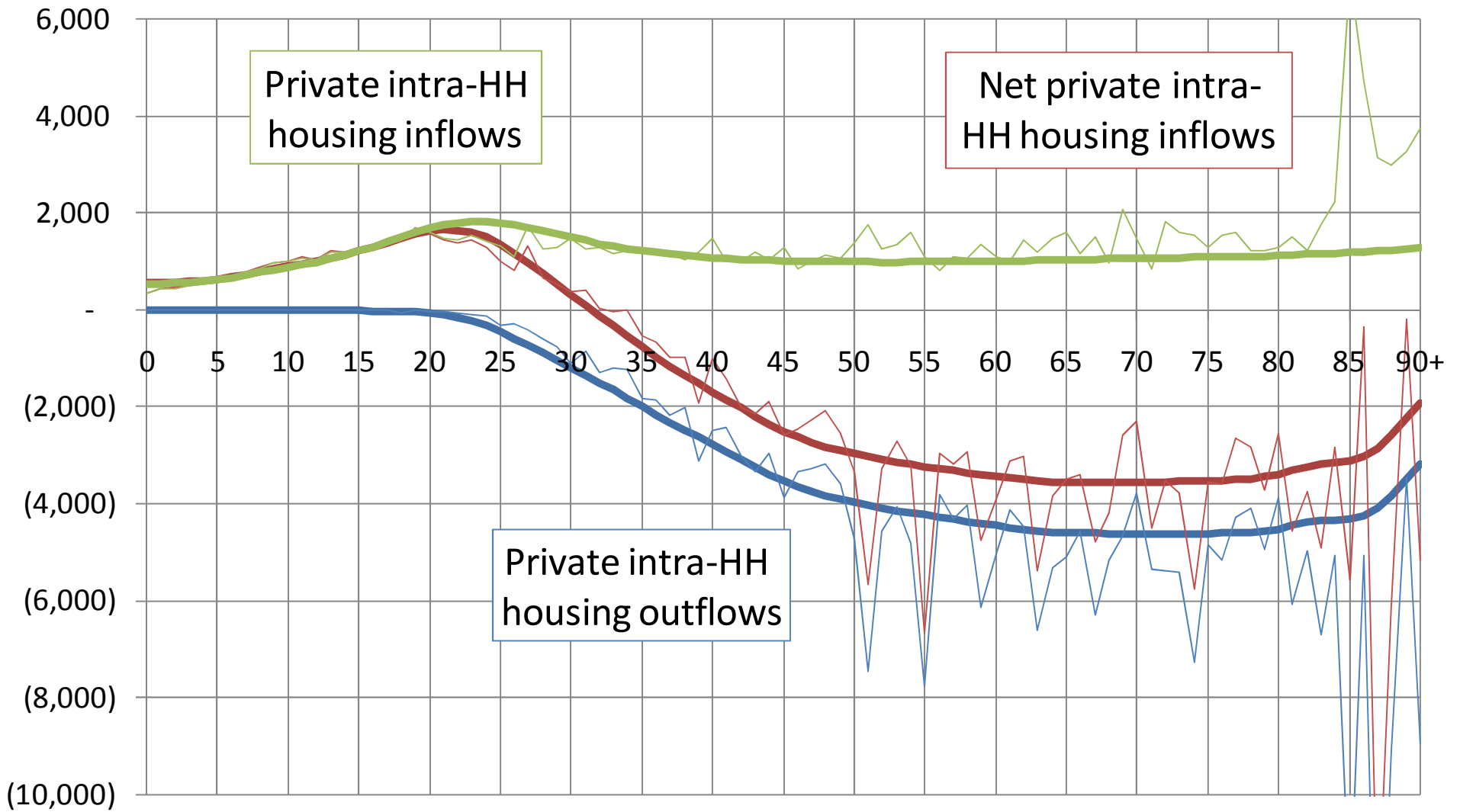
Mean per capita age profiles for private intra-HH transfers in health: Philippines, 1999

Pesos



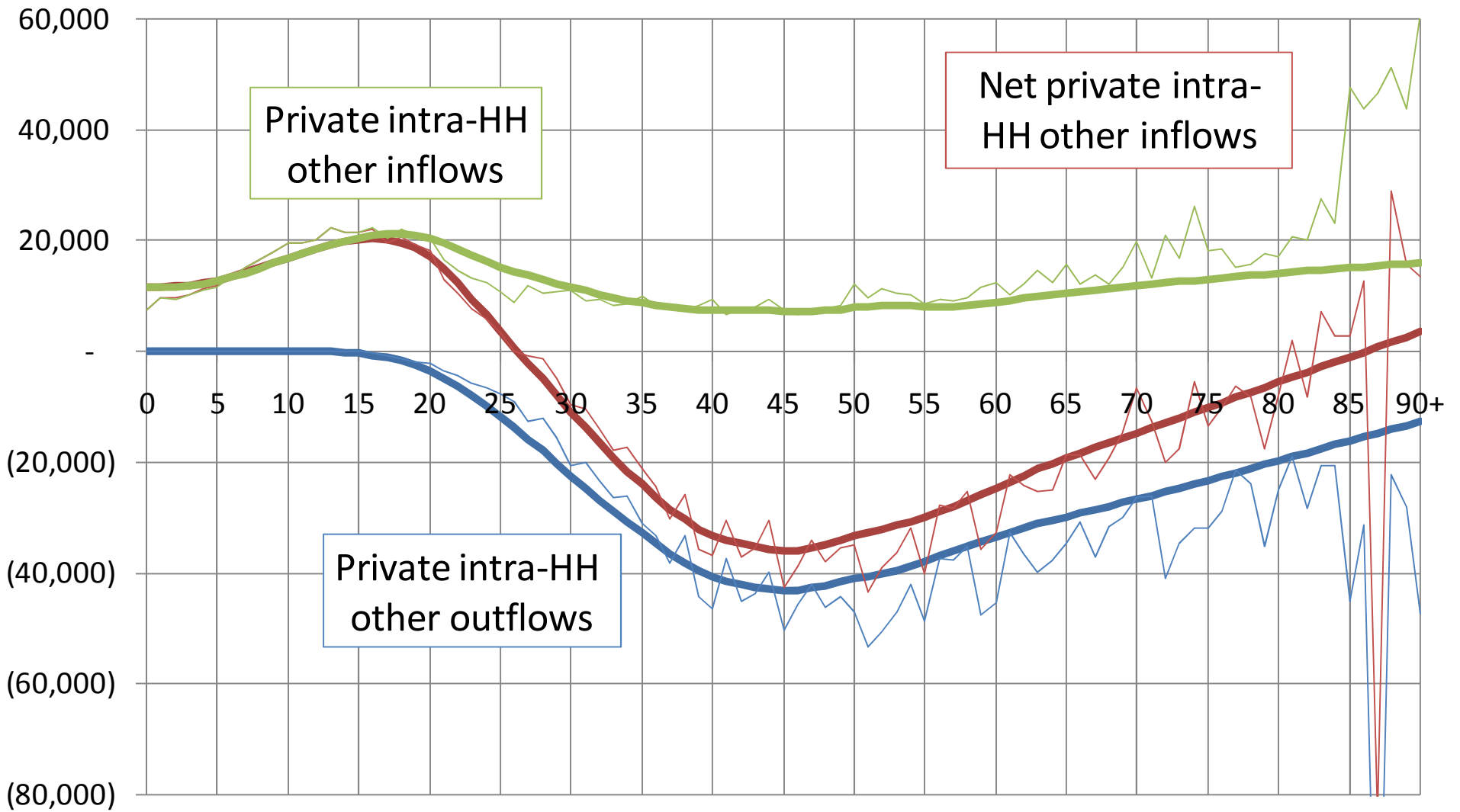
Mean per capita age profiles for private intra-HH transfers in owner-occupied dwelling: Philippines, 1999

Pesos



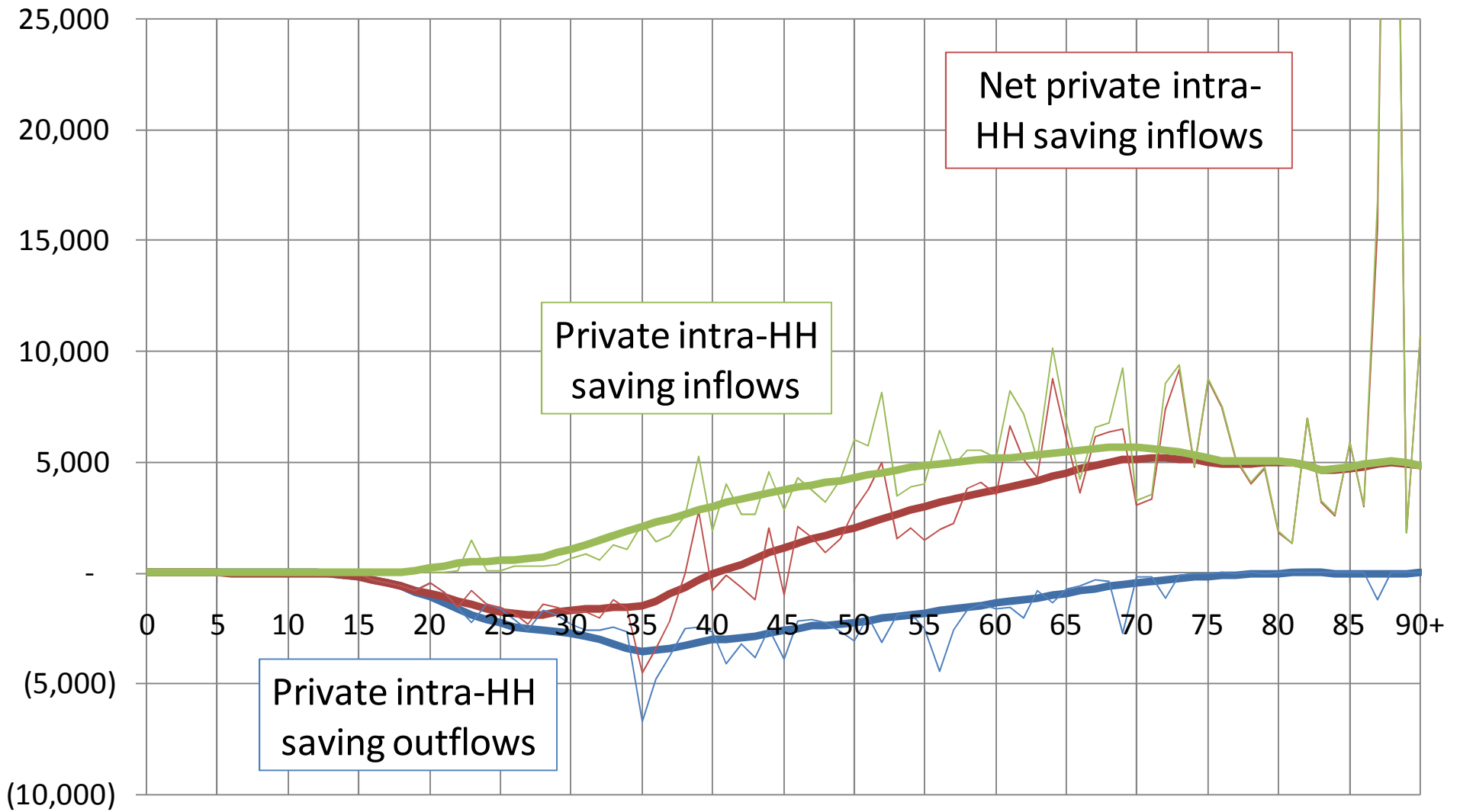
Mean per capita age profiles for private intra-HH transfers in other consumption: Philippines, 1999

Pesos



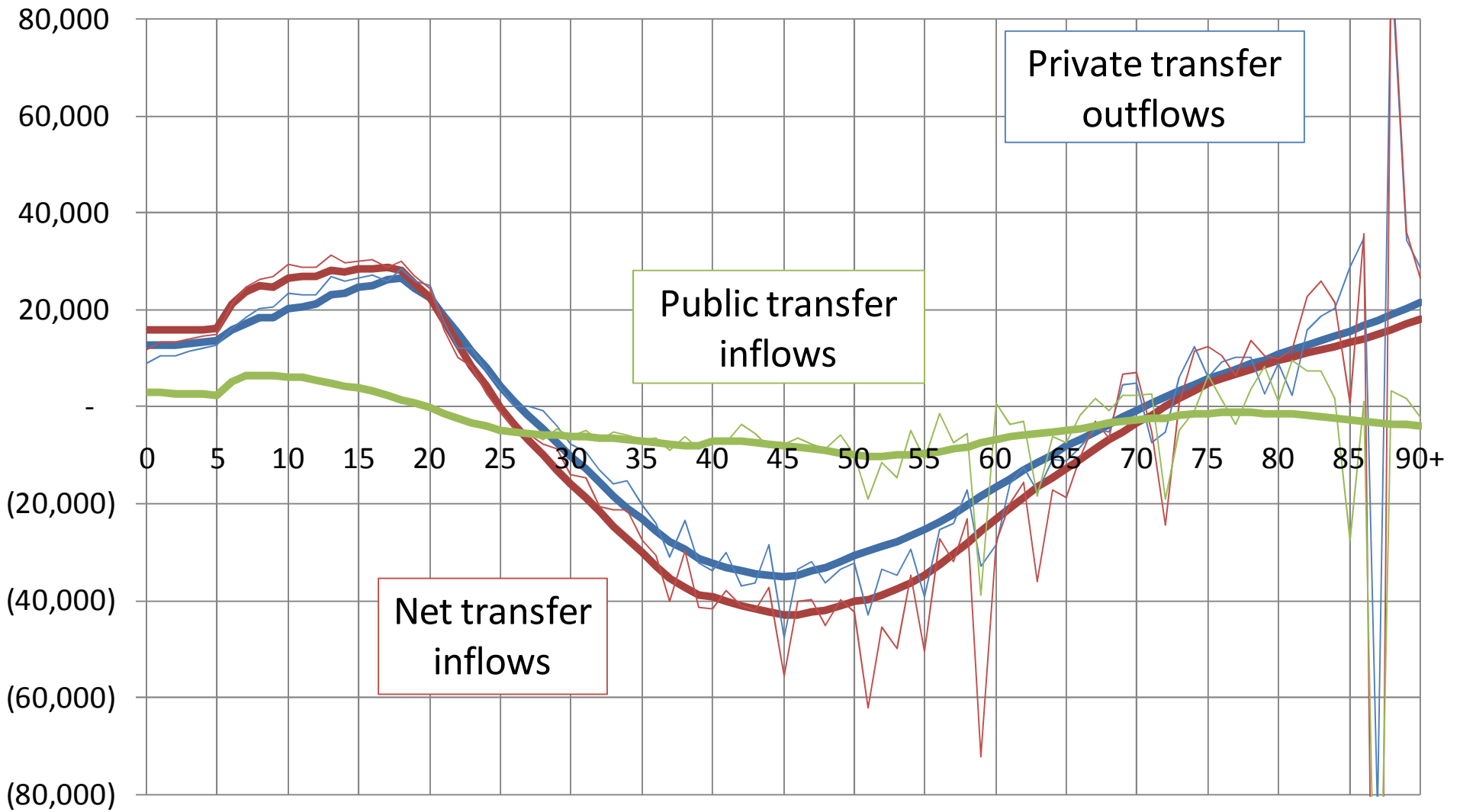
Mean per capita age profiles for private intra-HH transfers in saving: Philippines, 1999

Pesos

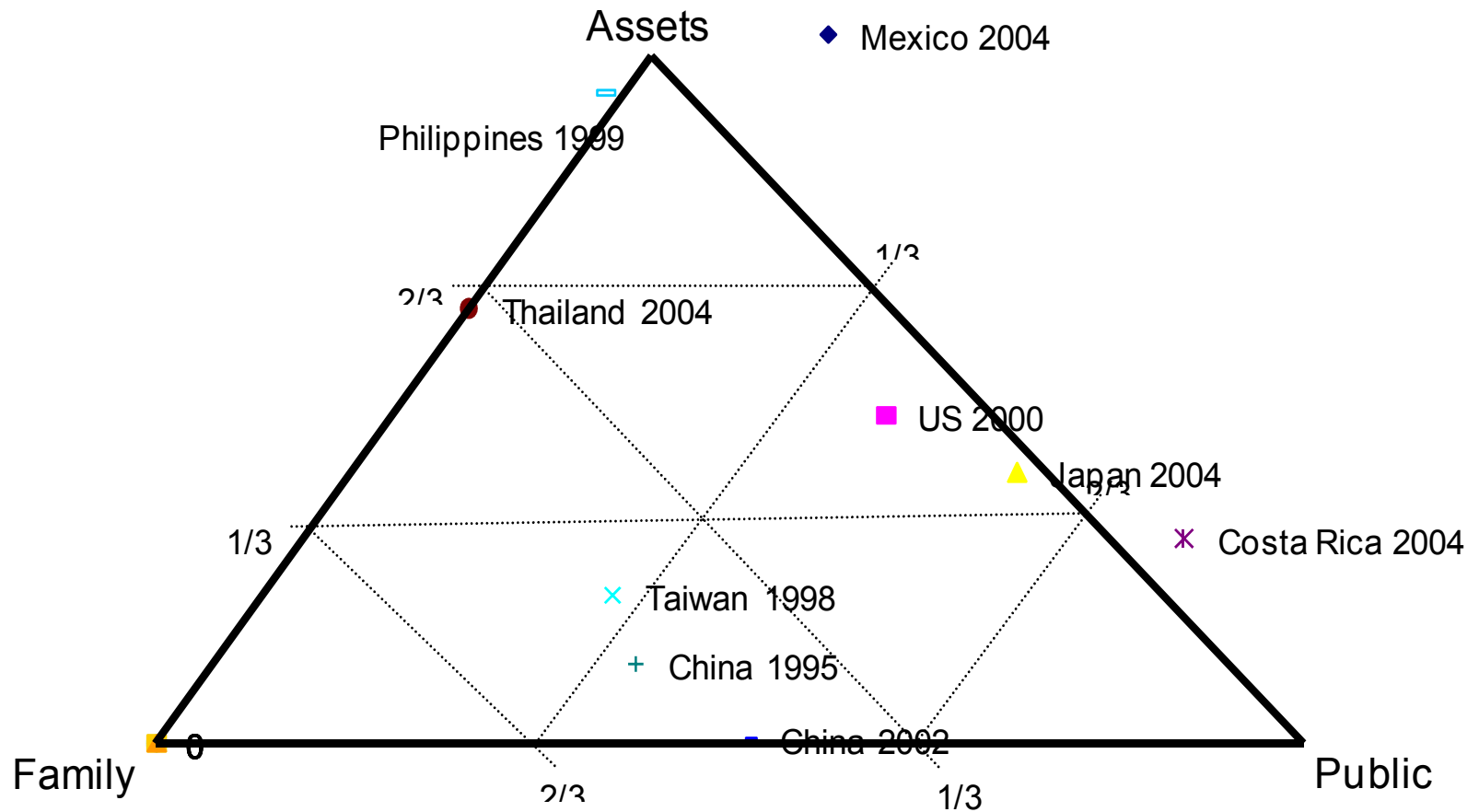


Mean per capita age profiles for private inter-HH transfers (domestic and ROW combined): Philippines, 1999

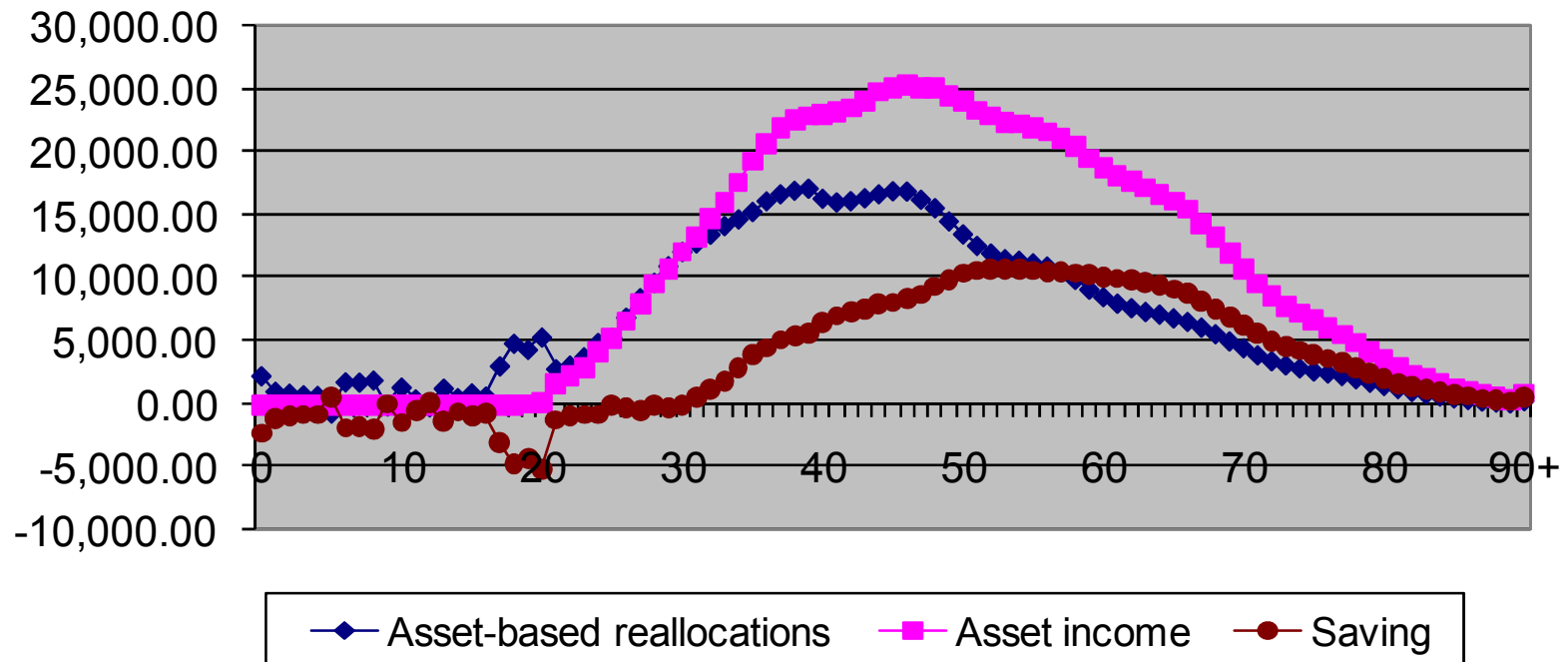
Pesos



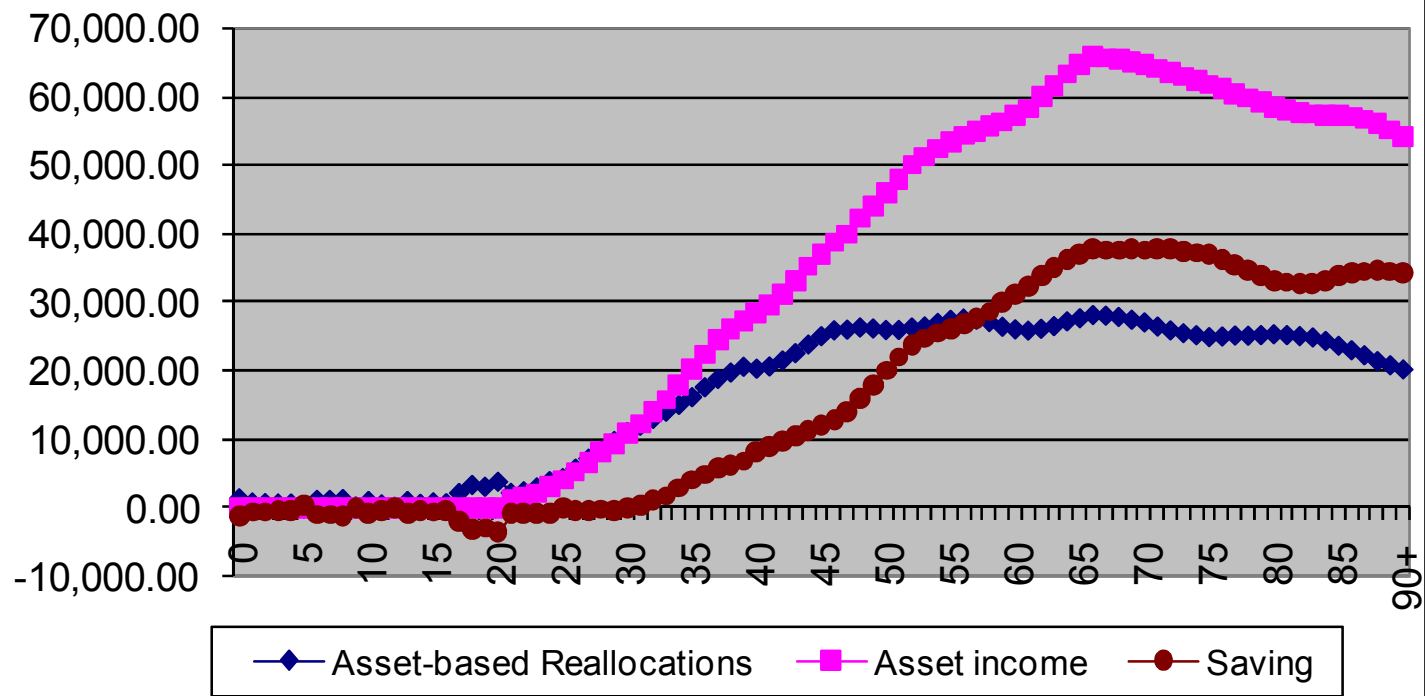
Triangle graph: Philippines, 1999



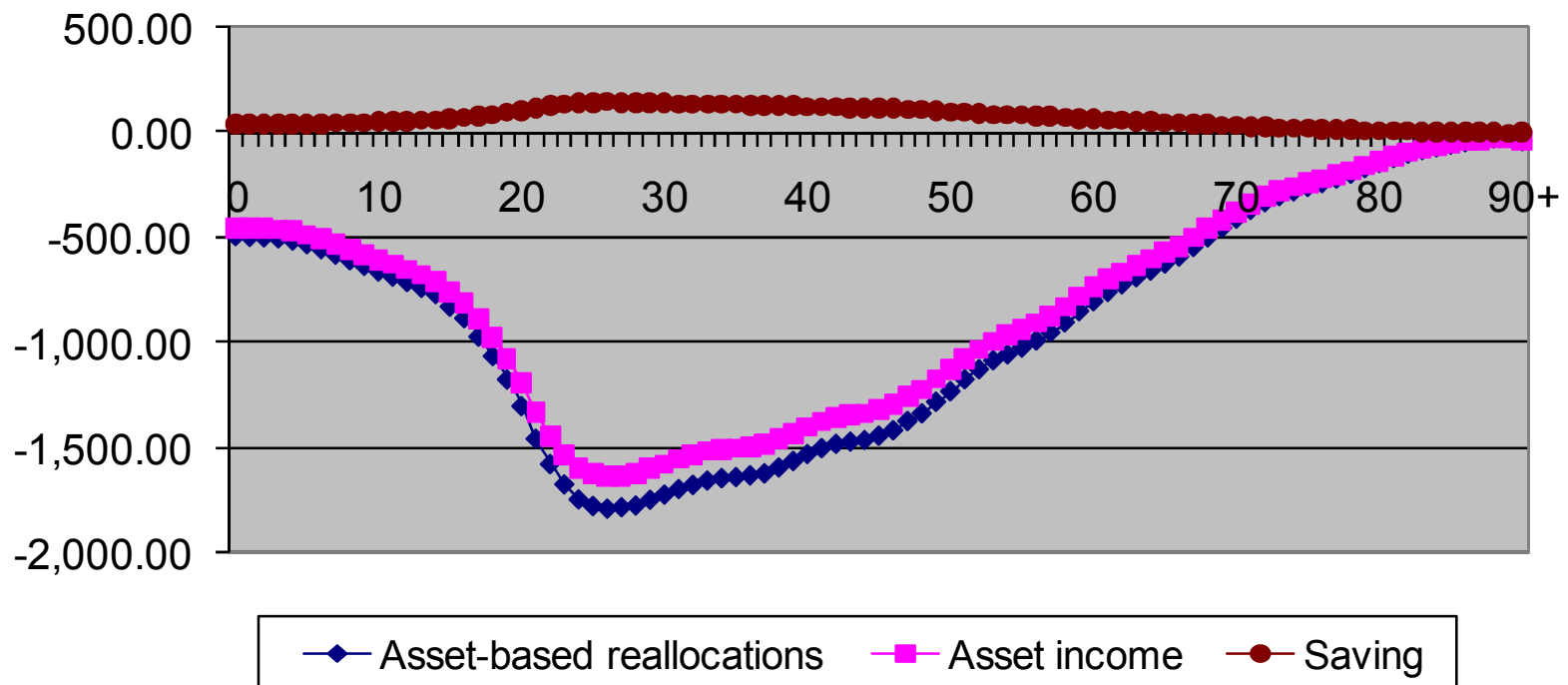
Aggregate Private Asset-based Reallocations, Philippines, 1999



**Per Capita Private Asset-based Reallocations,
Philippines, 1999**



Aggregate Public Asset-based Reallocations, Philippines, 1999



Per Capita Public Asset-based Reallocations, Philippines, 1999

