



NTA Mexico

Iván Mejía Guevara
Carlos Galindo

CONSEJO NACIONAL DE POBLACIÓN
CEPAL/IDRC PROJECT

Honolulu, June 19 2008

National Transfer Accounts



Inter Household Transfers

National Transfer Accounts

Inter-household Transfers

Data from survey

► Inflows

59,500 million pesos

(components)

► Outflows

91,607 million pesos

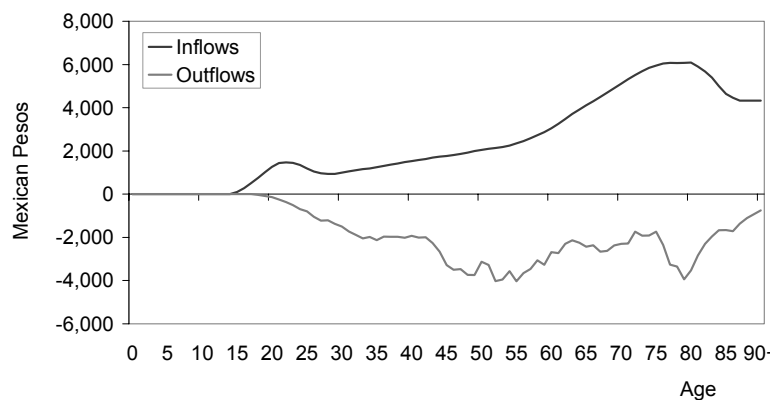
(components)

► Domestic aggregate control on Outflows = 117,715 million pesos
— taken from Other Current Transfers, Household (uses) —

National Transfer Accounts

Inter-household Transfers

Per Capita, Domestic, Inter-household Transfers,
Mexico, 2004

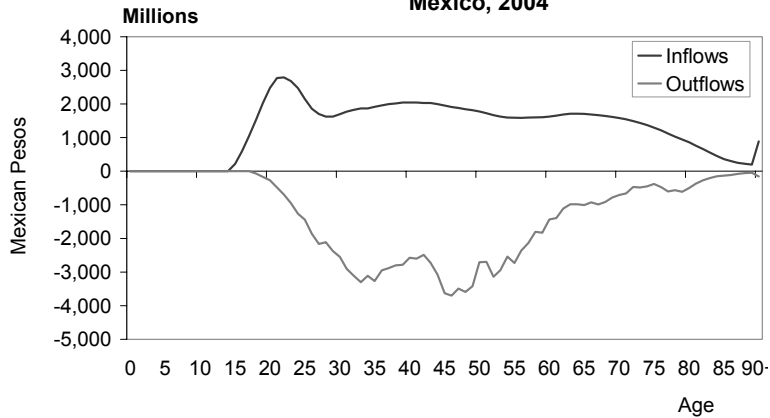


► Domestic balance = zero domestic net inter-hh transfers

National Transfer Accounts

Inter-household Transfers

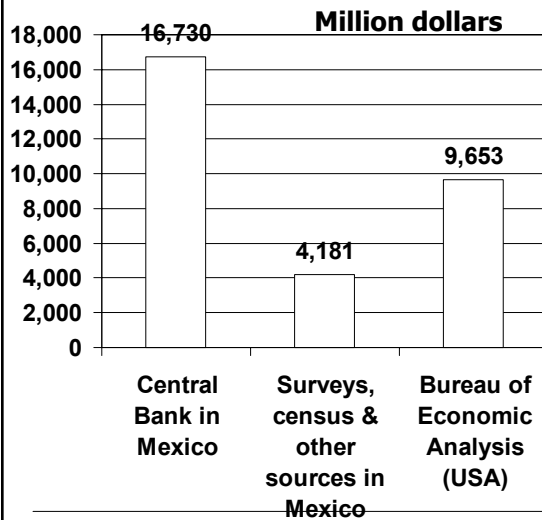
Aggregate, Domestic, Inter-household Transfers, Mexico, 2004



► Domestic balance = zero domestic net inter-hh transfers

National Transfer Accounts

Remittances



► Several inconsistencies in central bank data

Levels and trends do not correspond with other aspects of migration phenomena (i.e. receiving households, regions of origin of migrants, trend of Mexican population in the US, estimations of the Bureau of Economic Analysis in US and estimations from Mexican census and surveys).

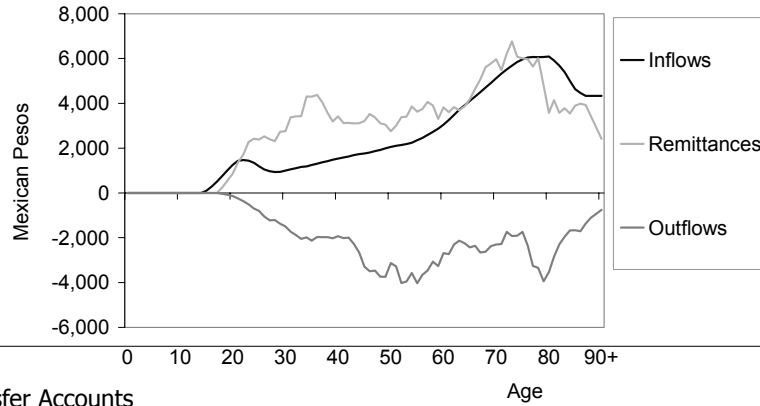
Central Bank figures might include other money transfers.

National Transfer Accounts

Inter-household Transfers

- ▶ Aggregate control for Net Inter-household Transfers = 193,619 million pesos taken from Other Current Transfers, Rest of the World (ROW uses) = Remittances data from Central Bank

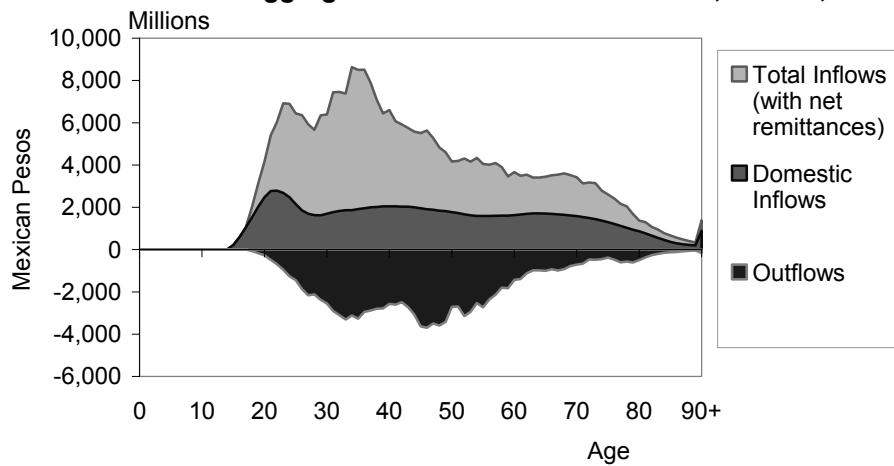
Per Capita Inter-household Transfers, Mexico, 2004



National Transfer Accounts

Inter-household Transfers

Aggregate Inter-household Transfers, Mexico, 2004

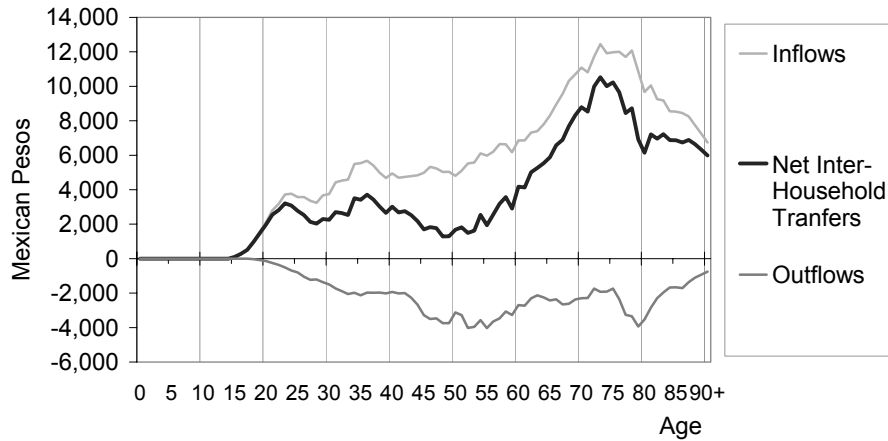


National Transfer Accounts

Inter-household Transfers



Per Capita, Net Inter-household Transfers, Mexico, 2004

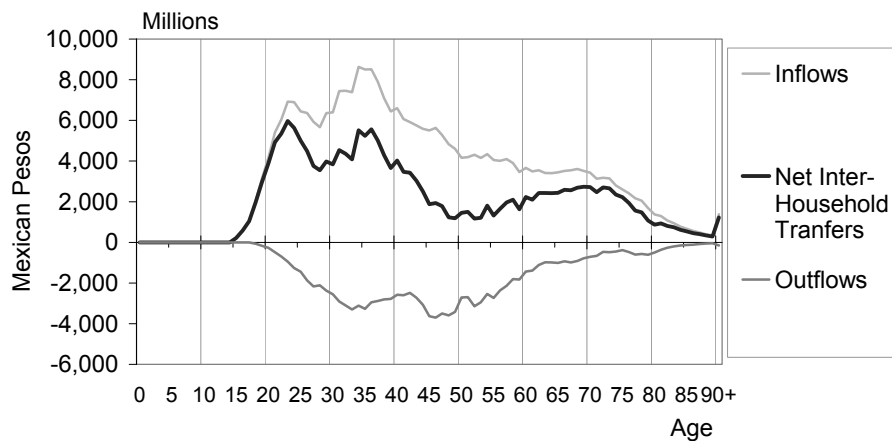


National Transfer Accounts

Inter-household Transfers



Aggregate, Net Inter-household Transfers, Mexico, 2004

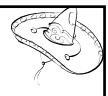


National Transfer Accounts

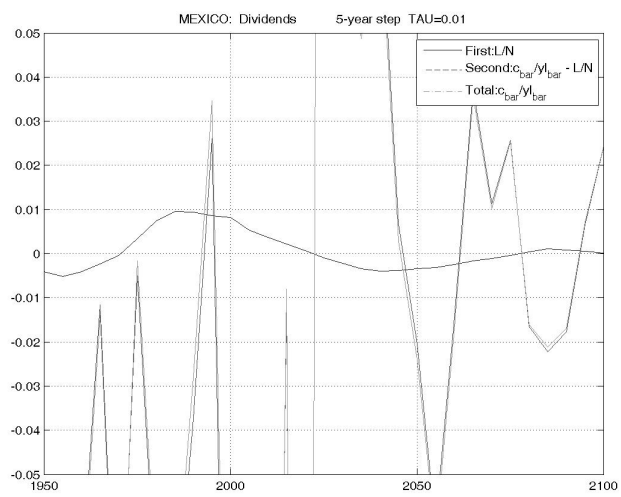


DIVIDENDS

National Transfer Accounts



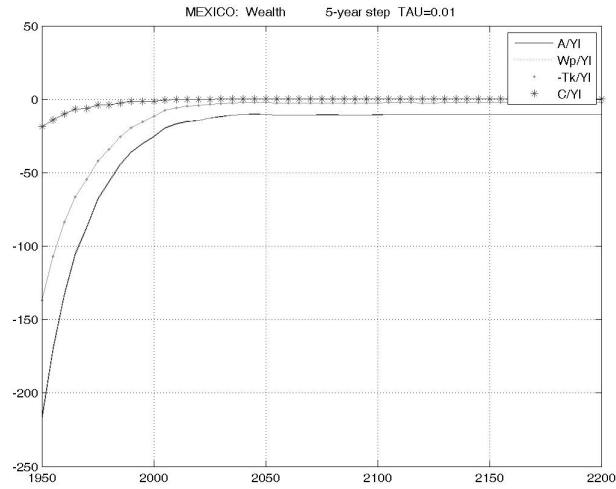
Dividend



au=0.5
G=0.015
VD=0.03
IR=0.06

National Transfer Accounts

Wealth



National Transfer Accounts

Public Outflows

National Transfer Accounts

Aggregate Controls

Transfer Outflows (UN SNA Classification): Mexico 2004 (million pesos)	
TOTAL	(1,509,301)
Taxes on production and imports [1]	(819,276)
Taxes on products	(777,816)
Value added type taxes (VAT)	(291,147) ← VAT
Taxes and duties on imports excluding VAT	(29,693) ← Imports
Export Taxes	(110,711) ← ?
Taxes on products except VAT, import and export taxes	(346,264)
Monopoly revenues and excise and stamp taxes from tobacco and alcohol	(86,387) ← IEPS
Taxes on financial transactions	-
Other	(218,417) ← ?
Other taxes on production	(41,460)
Subsidies [1]	32,778
Subsidies on products	32,778
Import subsidies	-
Export subsidies	-
Other subsidies on products	32,778
Other subsidies on production	-
Current taxes on income, wealth, etc. [2]	(405,613) ← ISR
Taxes on income	(368,114)
Other current taxes	(37,499)
Social contributions [2,3]	(175,415) ← SSC
Employers' actual social contributions	(153,351)
Employees' actual social contributions	-
Social contributions by self- and non-employed persons	-
Imputed social contributions	(22,065)
Other current transfer outflows [2]	(141,775) ← Other
Other current transfers, domestic [4]	(141,039)
Other current transfers, rest of the world [5]	(736)

Classification from UN SNA 1993.

National Transfer Accounts

Aggregate Controls

Public Transfer Inflows Classified by Sector: Mexico 2004 (million pesos)			
Sector	Public Transfer Inflows		
	Total Inflows	In-kind Transfer Inflows	Cash Transfer Inflows
Total	1,236,040	913,971	322,069
Education	332,544	332,544	-
Health	171,207	171,207	-
Pensions	-	-	-
Other Social Protection	-	83,817	147,973
Other	500,499	326,403	174,096
ROW	-	-	-

National Transfer Accounts

Aggregate Controls



Structure of Public Flow Account: Mexico 2004 (million pesos)		
Public Transfers		
Net Public Transfers		-
Public Transfer Inflows	-	1,236,040
In-kind Transfer Inflows	913,971	-
Cash Transfer Inflows	322,069	-
Public Transfer Outflows	-	(1,236,040)
Taxes and Grants	(1,509,301)	-
Transfers Surplus(+)/Deficit(-)	273,261	-
Public Asset-based Flows		
Public Asset-based Reallocations	-	(208,174)
Asset Income	-	-
Less: Public Saving [1]	0	208,174

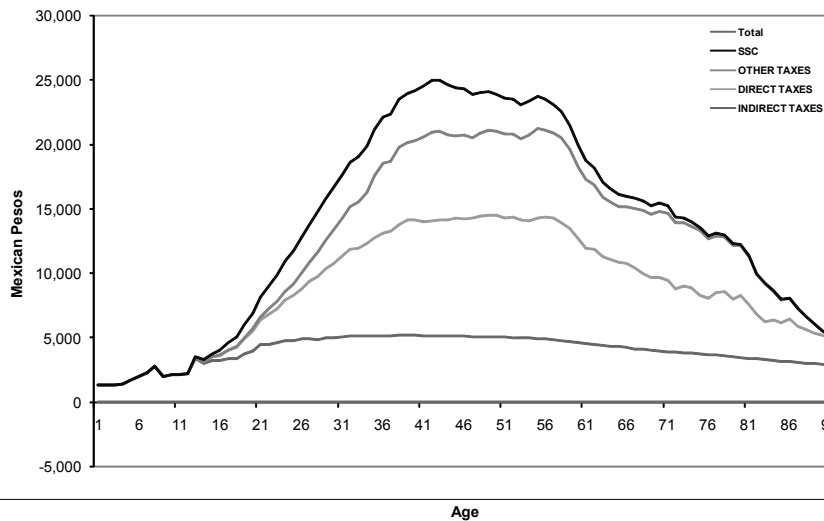
1. Table 9.1 Use of disposable income account (p 204) Saving, net for general government.

National Transfer Accounts

Aggregate Controls



Public Transfers Indirect Taxes (VAT, IEPS), Mexico, 2004



National Transfer Accounts



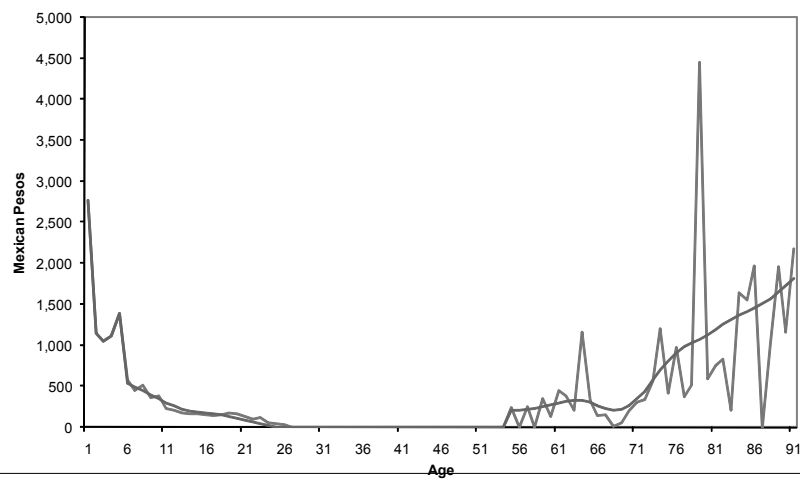
Intra Household Transfers

National Transfer Accounts



First Results

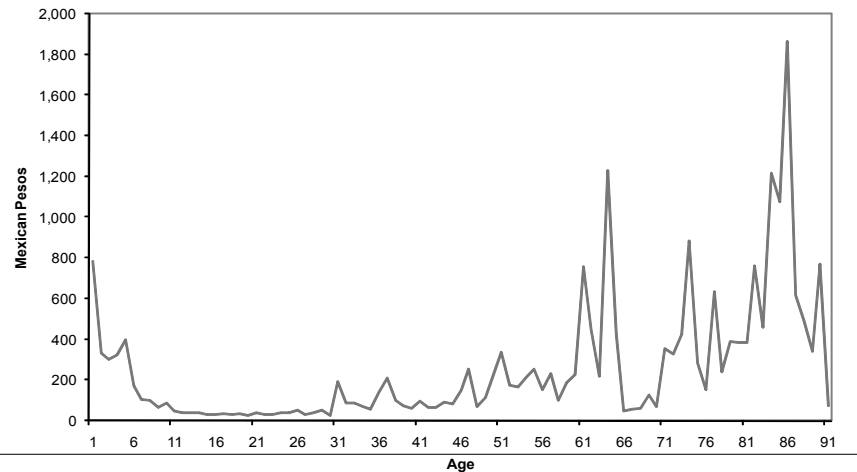
Intra-household Health Transfers (Inflows), Mexico, 2004



National Transfer Accounts

New Preliminary Estimation

Intra-household Health Transfers (Inflows), Mexico, 2004



National Transfer Accounts

Problem

- Adjusted profiles (cce, cch, ccx, tgtax,...) in micro level
- Many profiles (taxes for instances)
- Different strategies used for estimation

National Transfer Accounts



Thank You!