

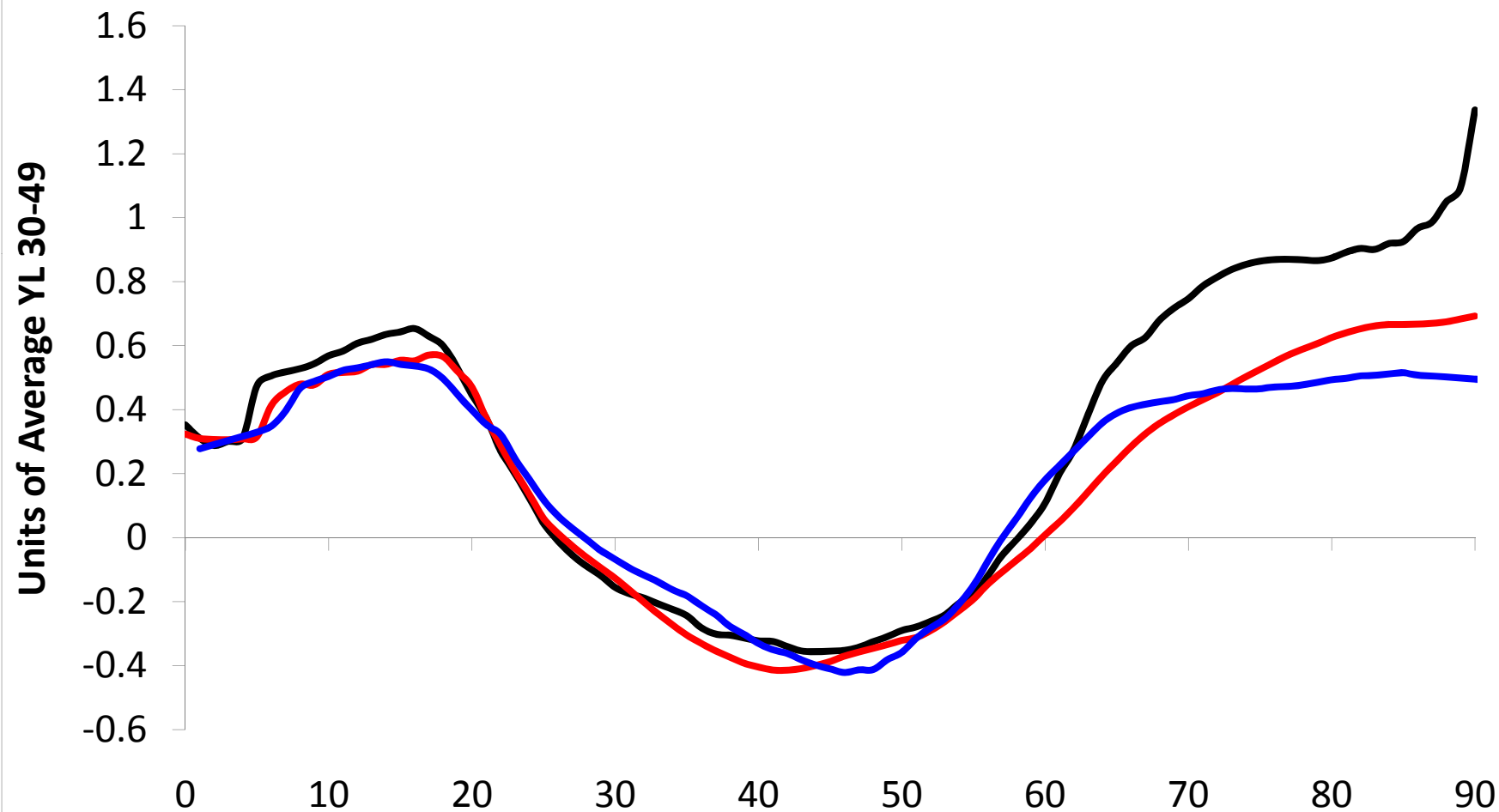
A Tour Through the Philippines NTA

Year 1999

(US Team NTA meeting 3/18/2010)

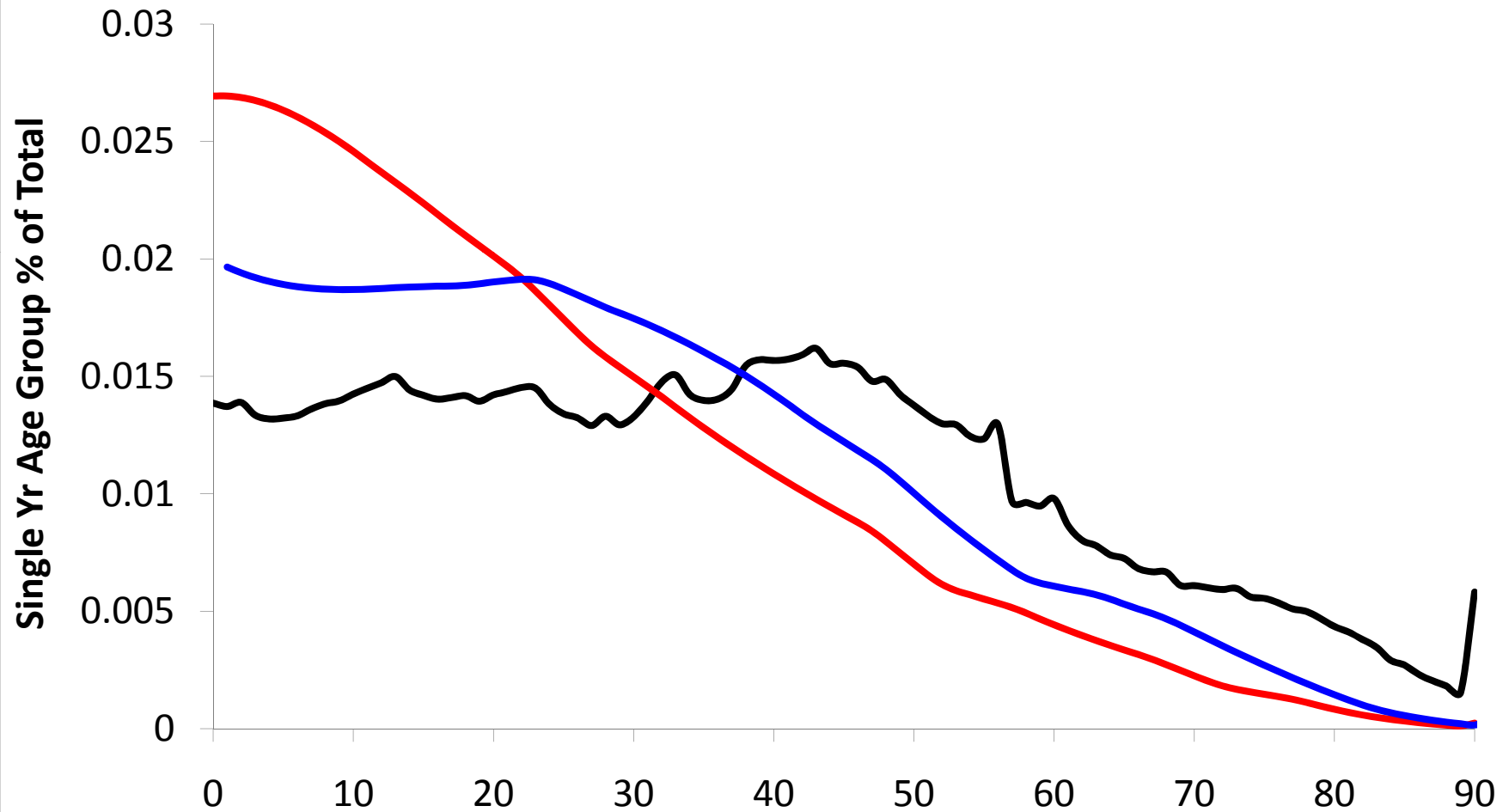
LCD

(Red - Philippines 1999; Black - US 2003; Blue - Indonesia 2005)



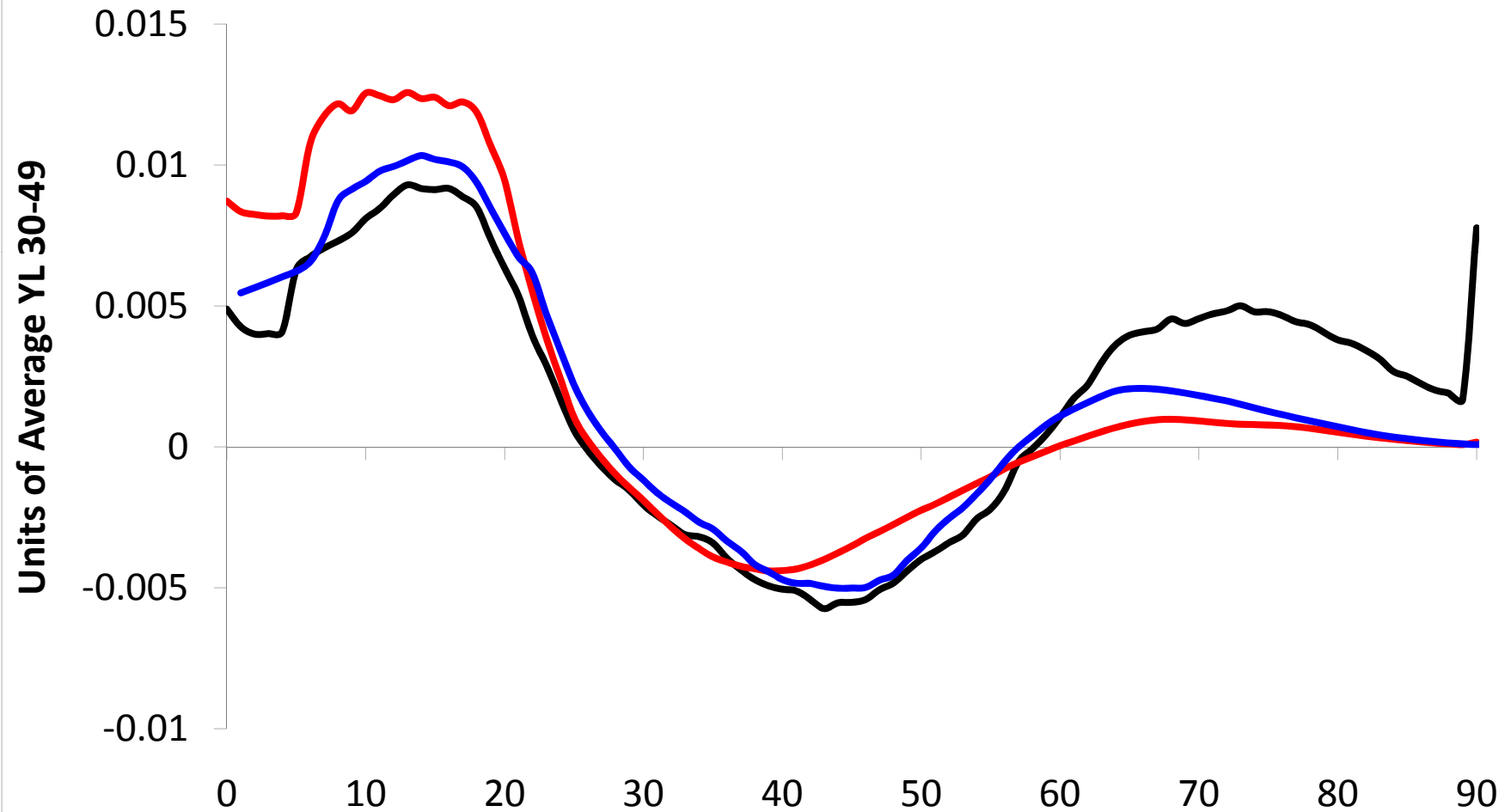
POPULATION AGE DISTRIBUTION

(Red - Philippines 1999; Black - US 2003; Blue - Indonesia 2005)



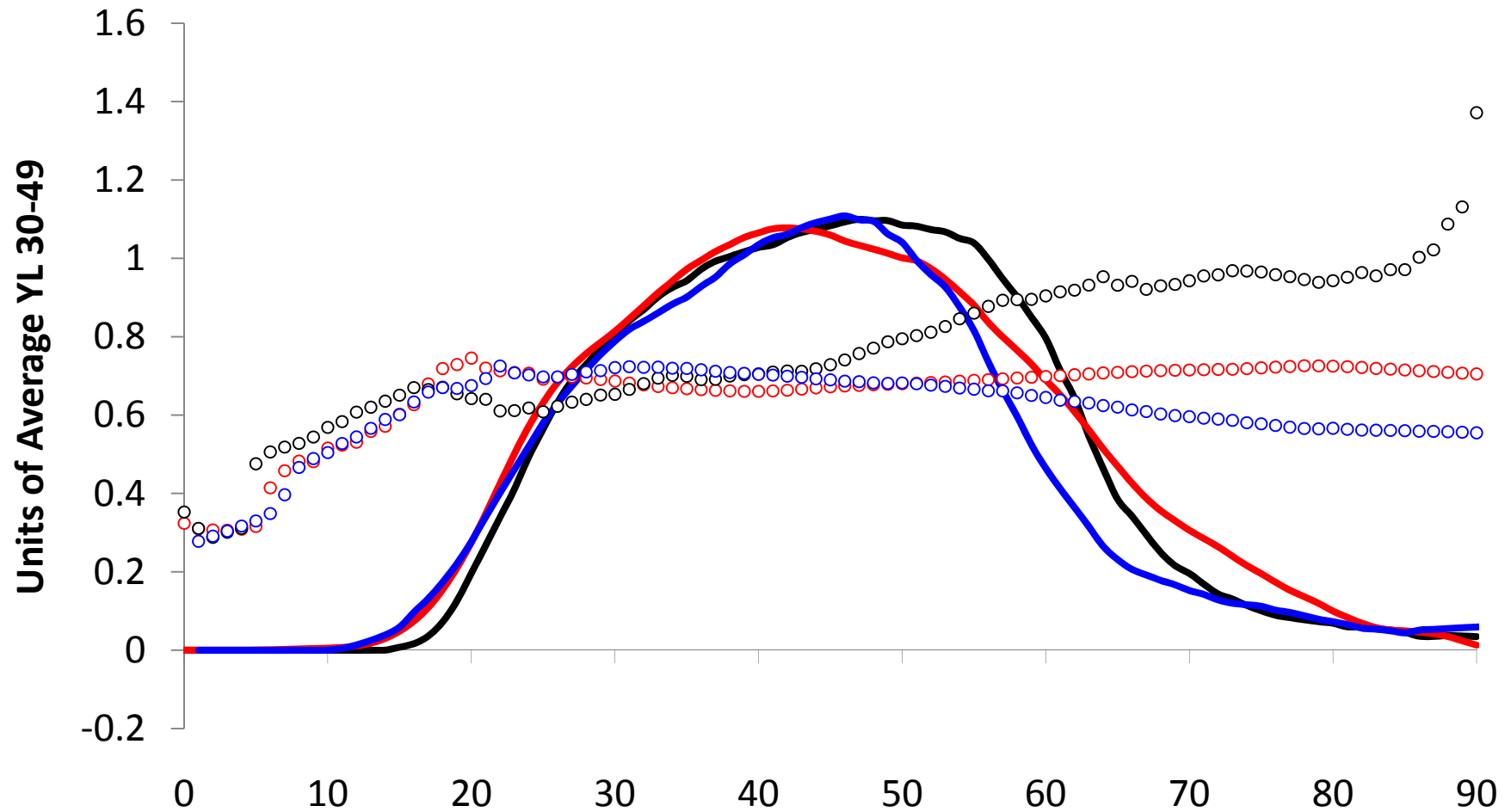
LCD - POPULATION WEIGHTED

(Red - Philippines 1999; Black - US 2003; Blue - Indonesia 2005)



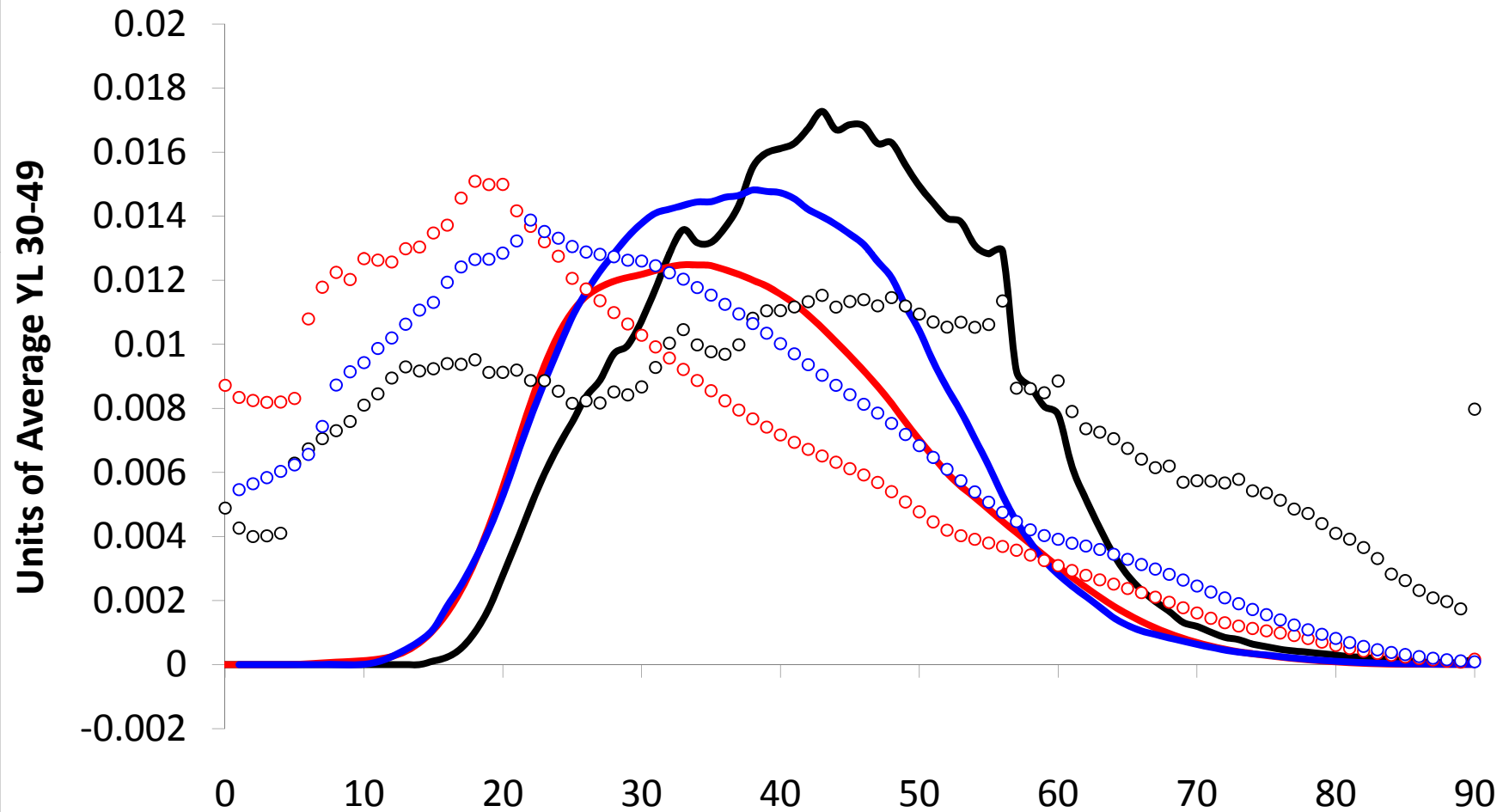
Labor Income and Consumption

(Red - Philippines 1999; Black - US 2003; Blue - Indonesia 2005)

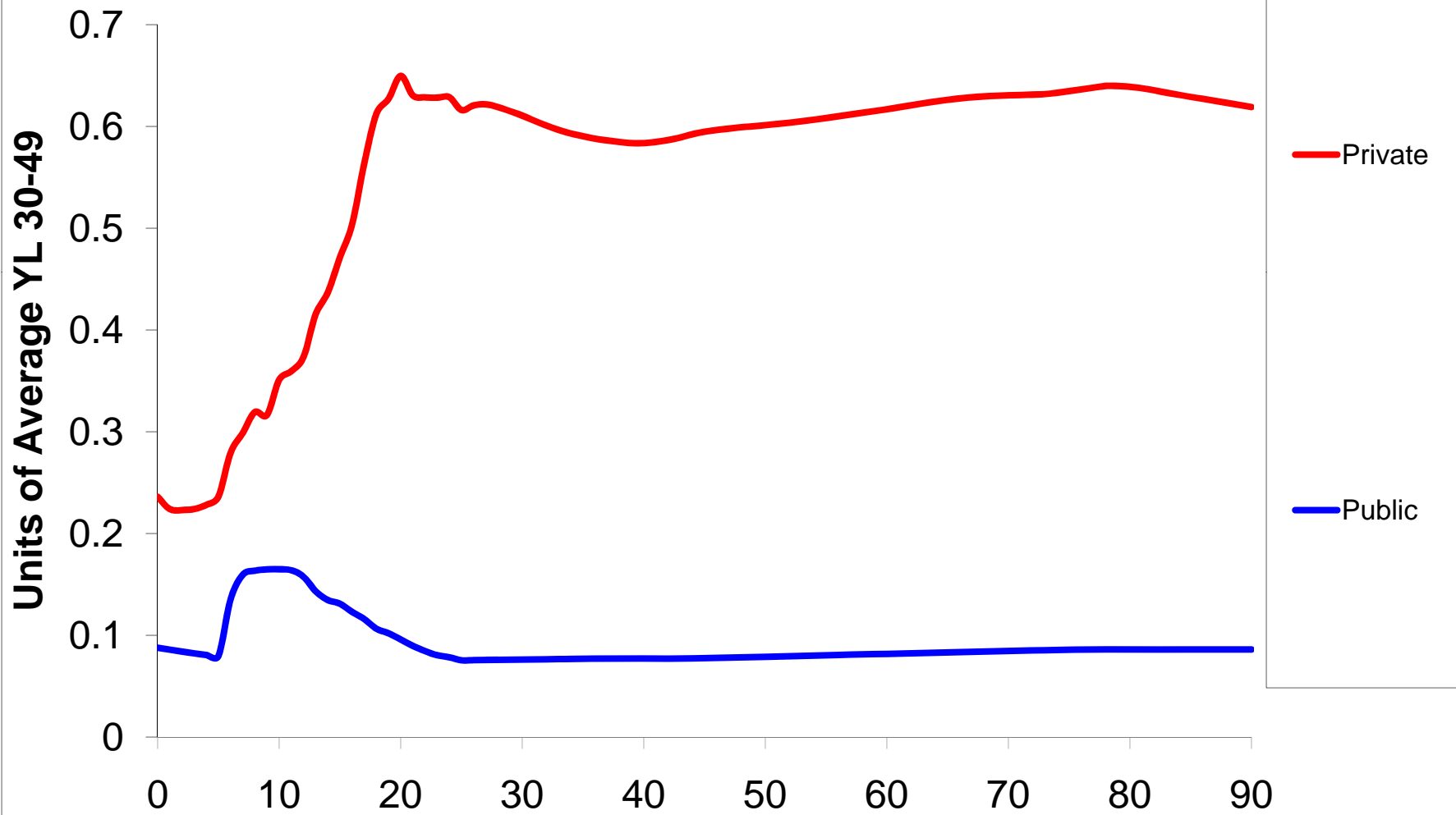


YL & C - POPULATION WEIGHTED

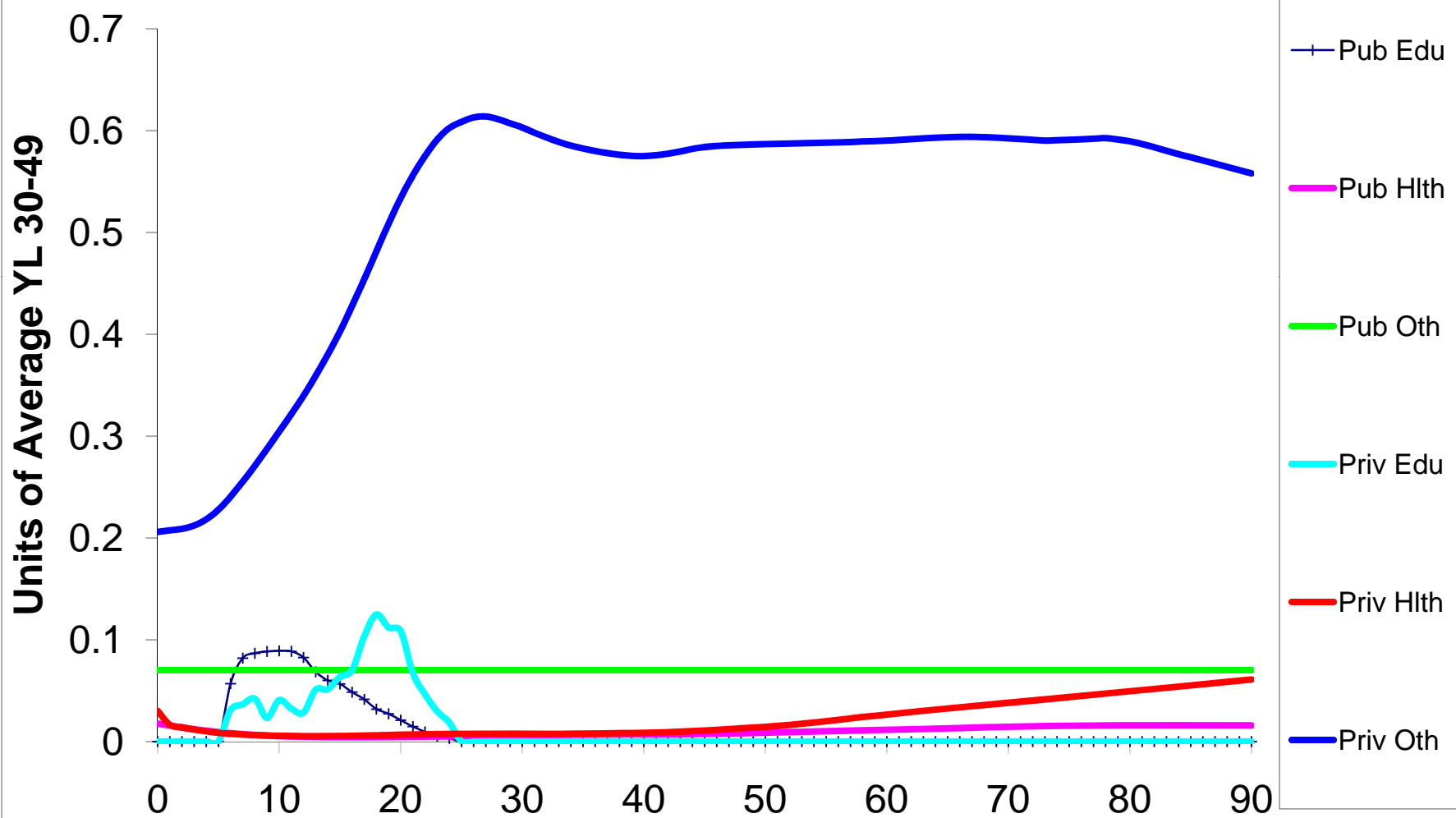
(Red - Philippines 1999; Black - US 2003; Blue - Indonesia 2005)



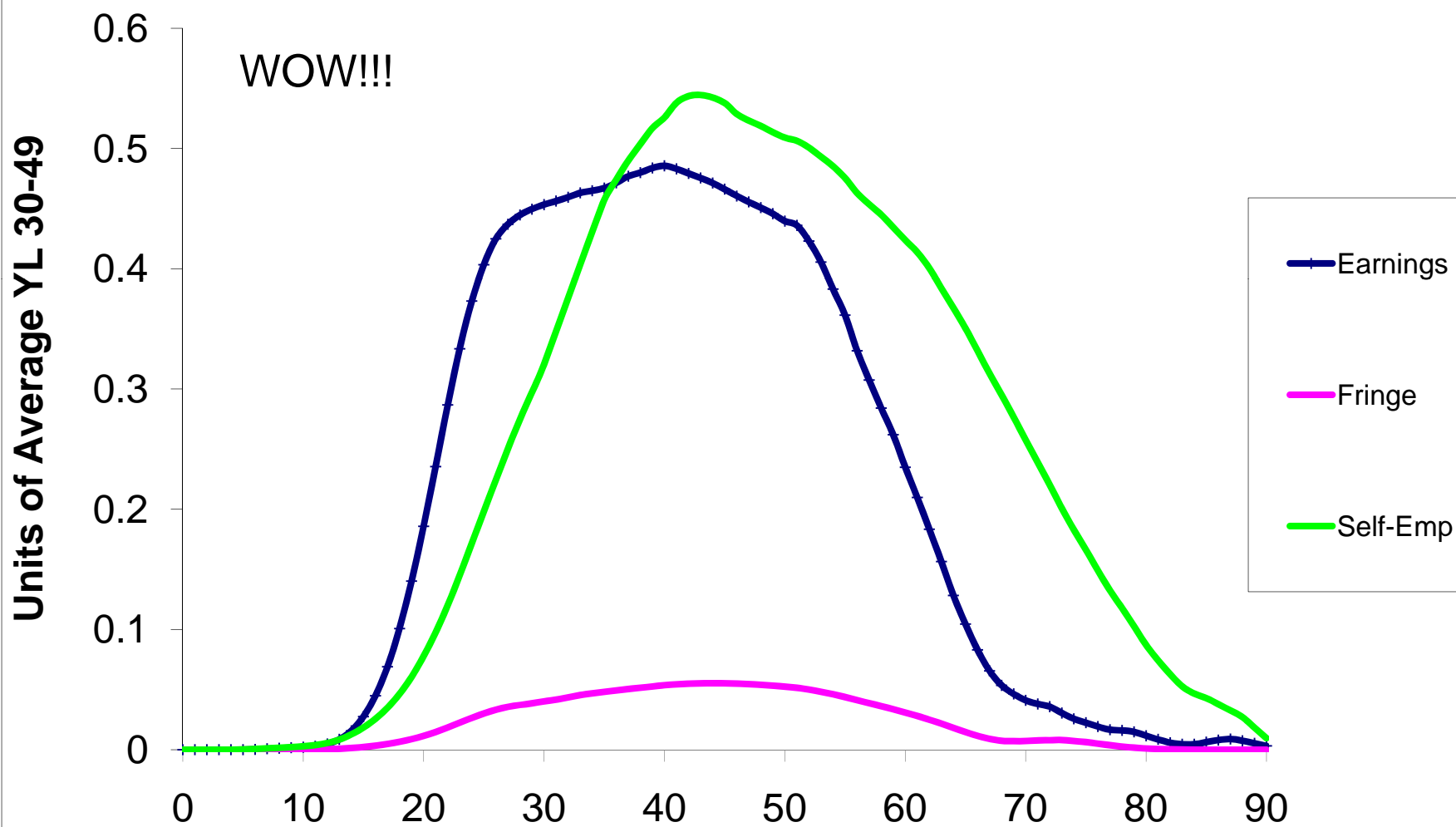
C - Public and Private



C Components

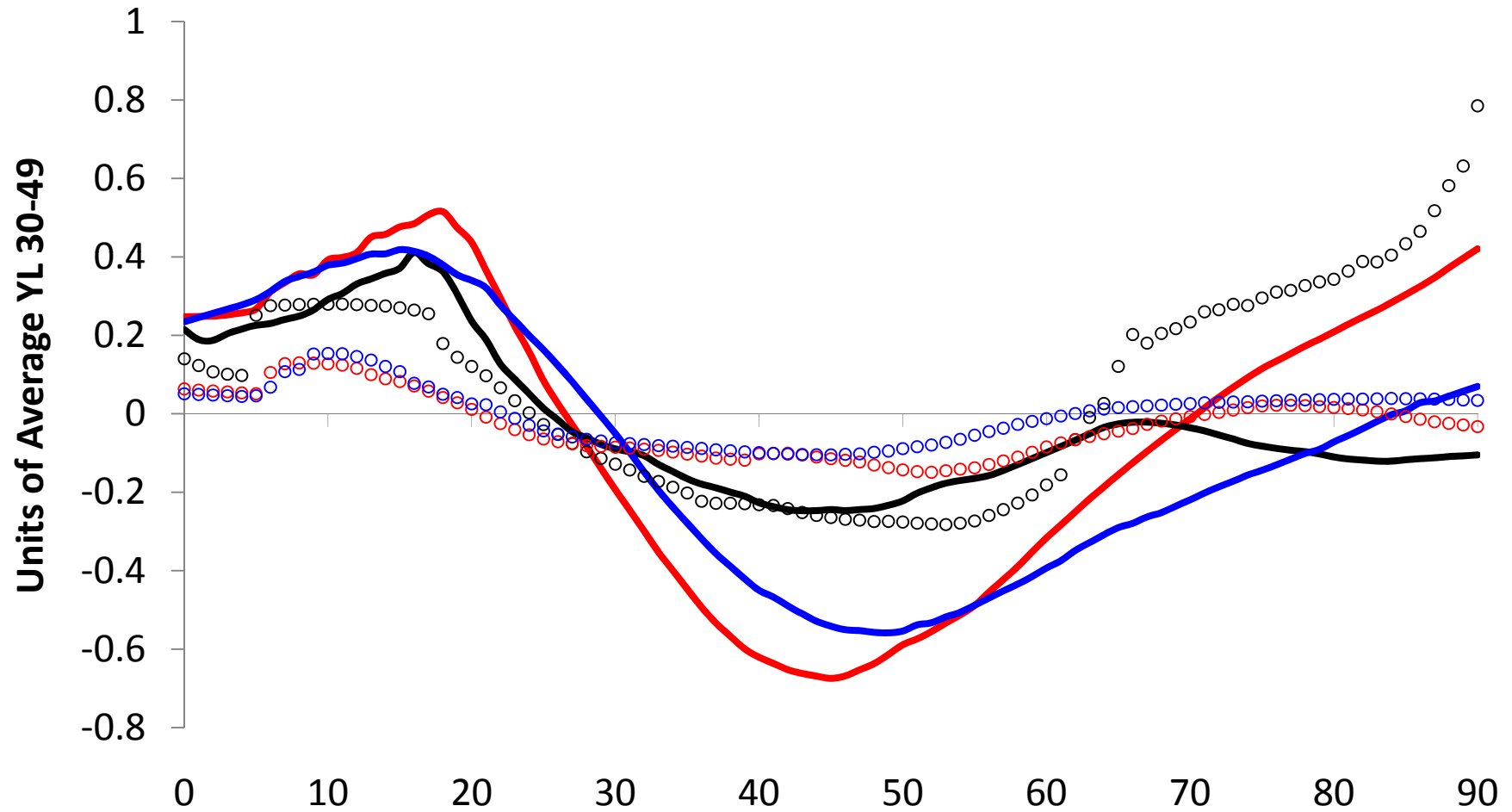


YL Components



Transfers

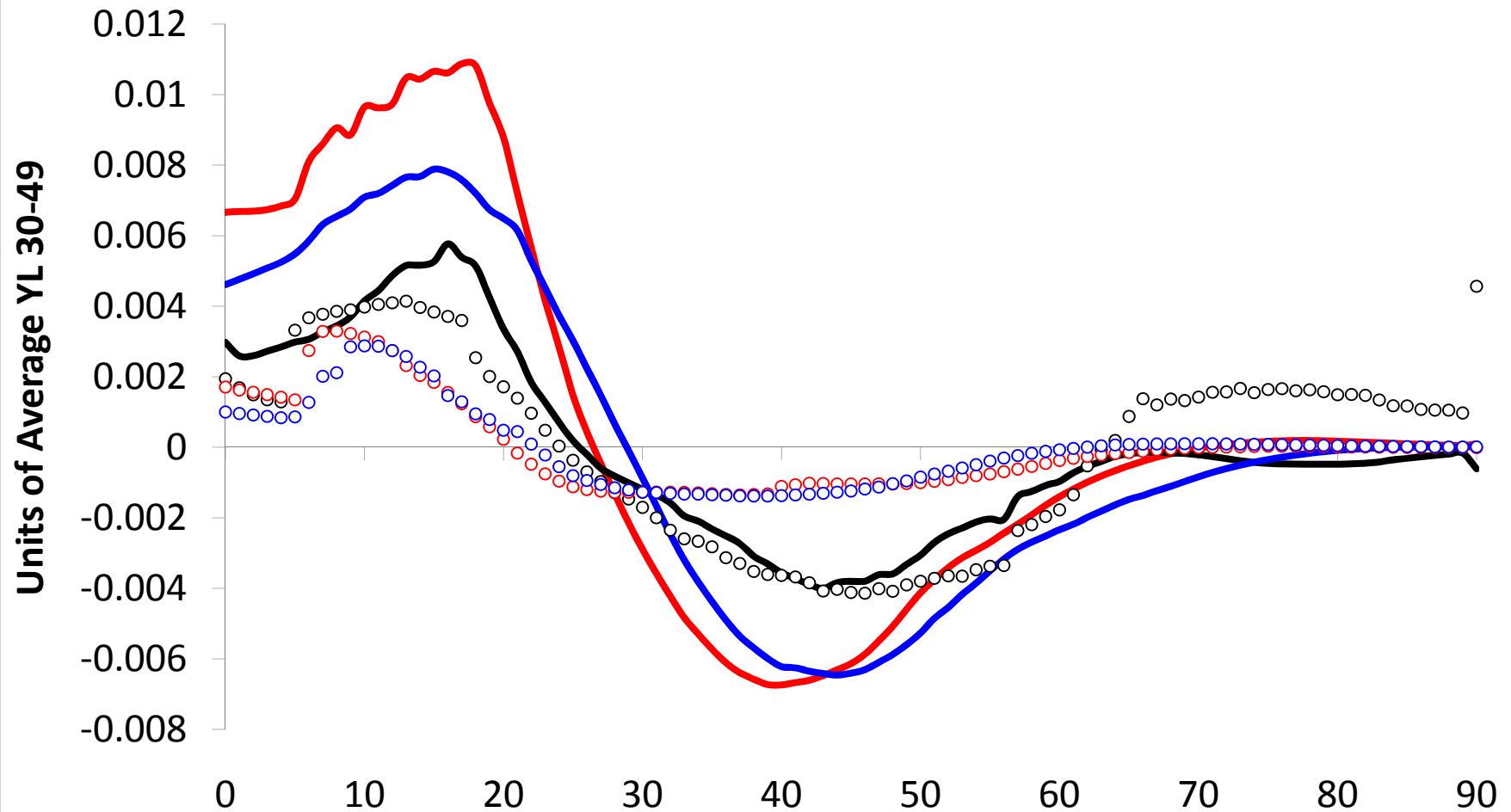
(Red - Philippines; Black - US; Blue - Indonesia)
Circles are public transfers, lines are private transfers)



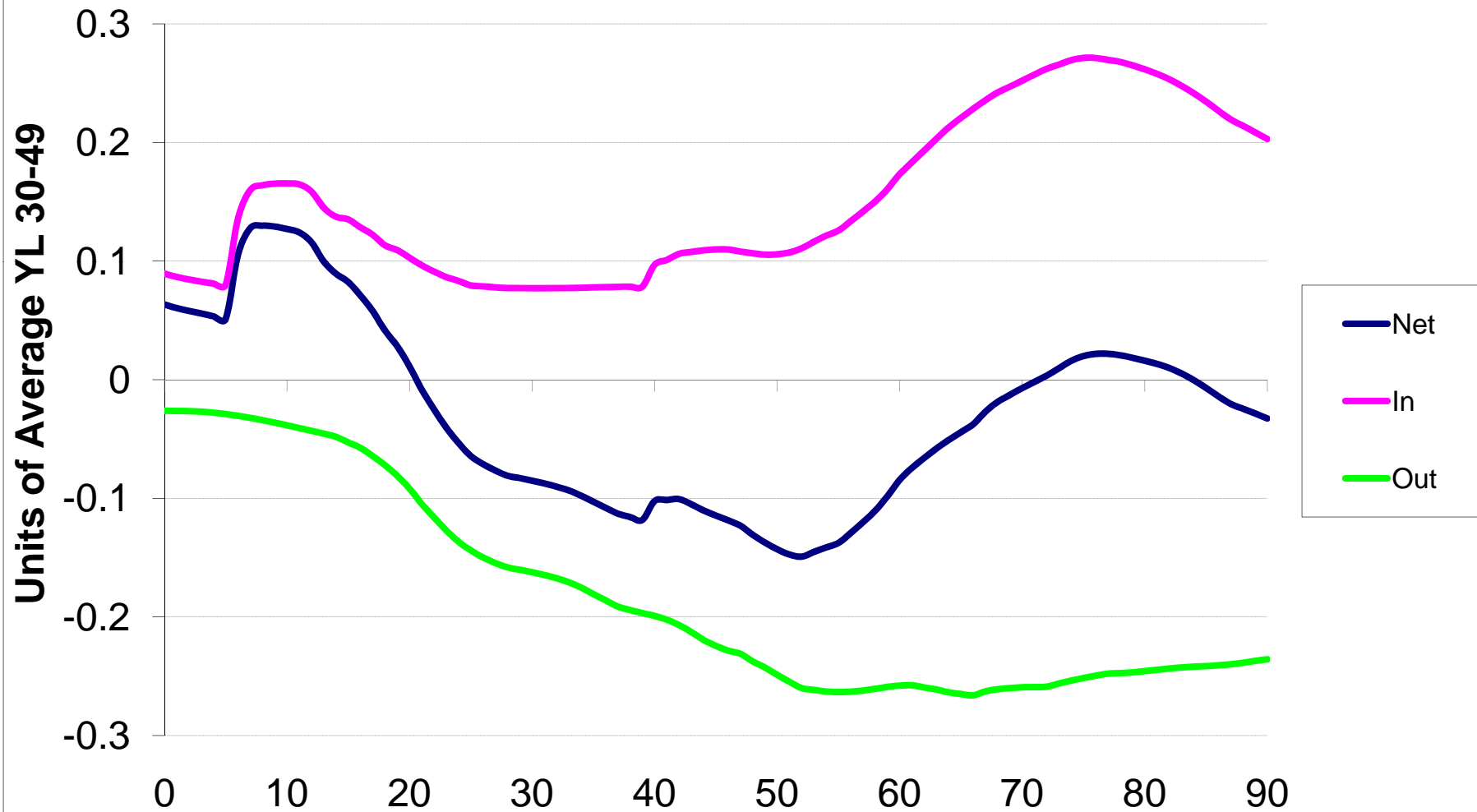
Transfers - POPULATION WEIGHTED

(Red - Philippines; Black - US; Blue - Indonesia)

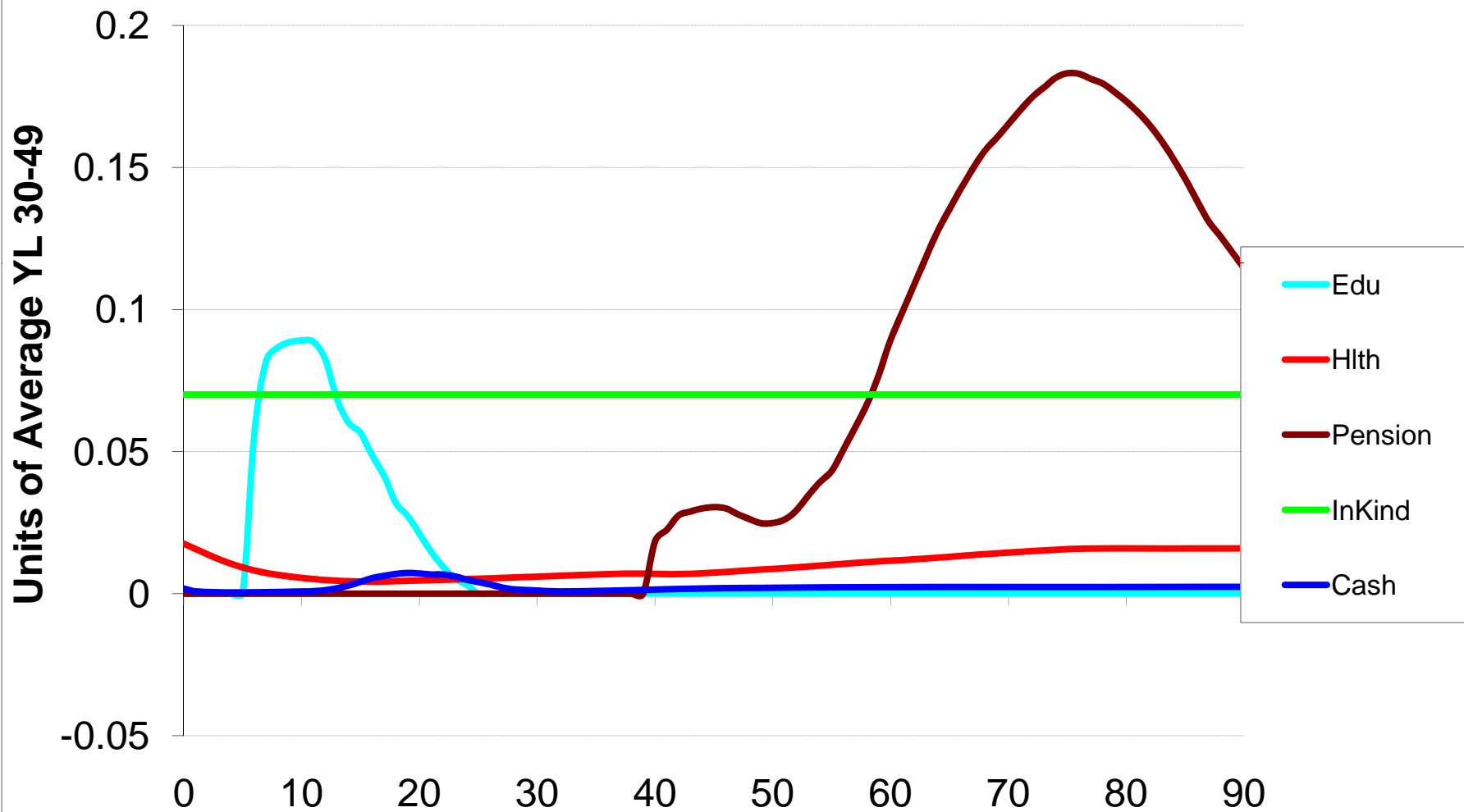
Circles are public transfers, lines are private transfers



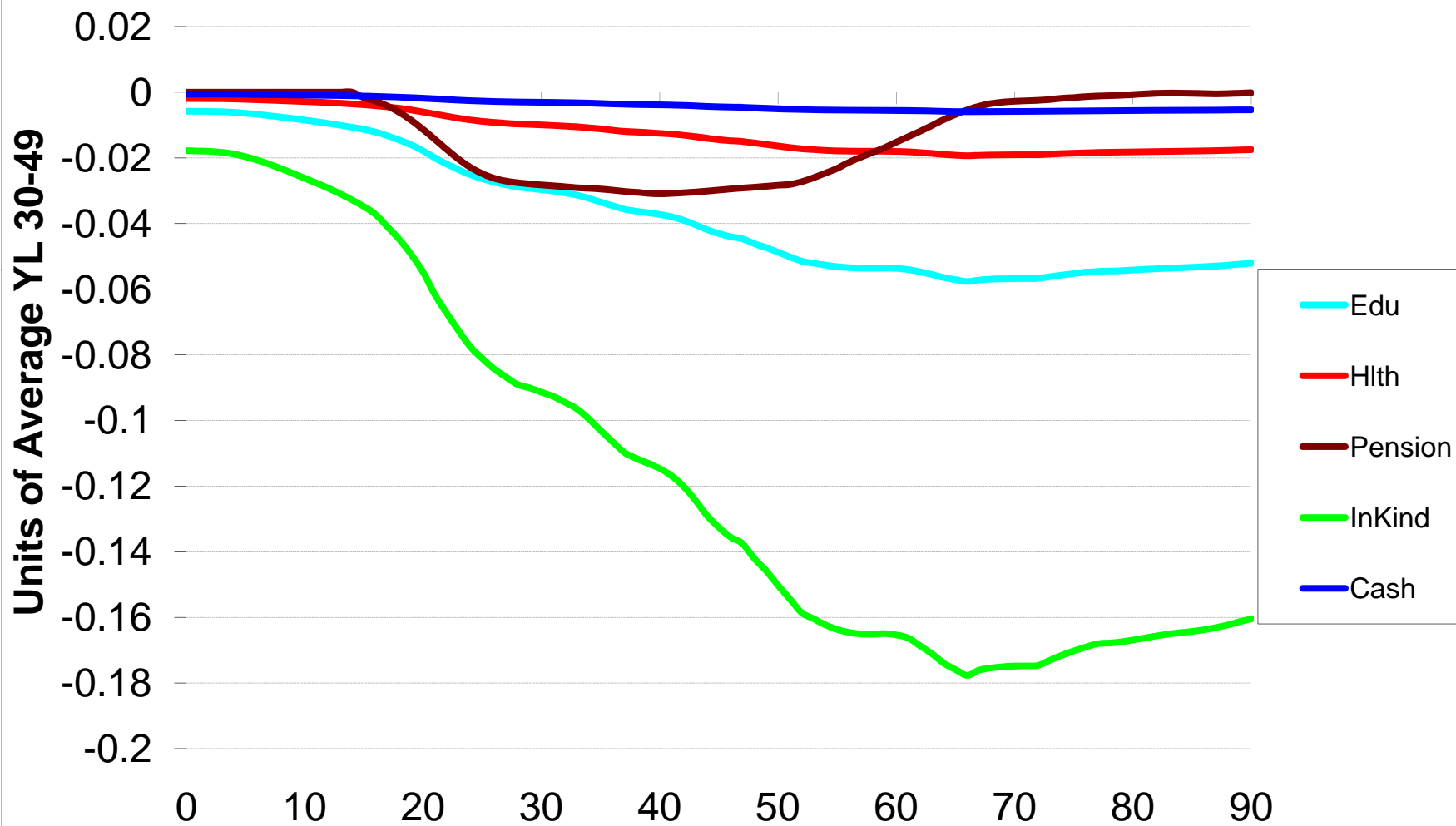
Public Transfers



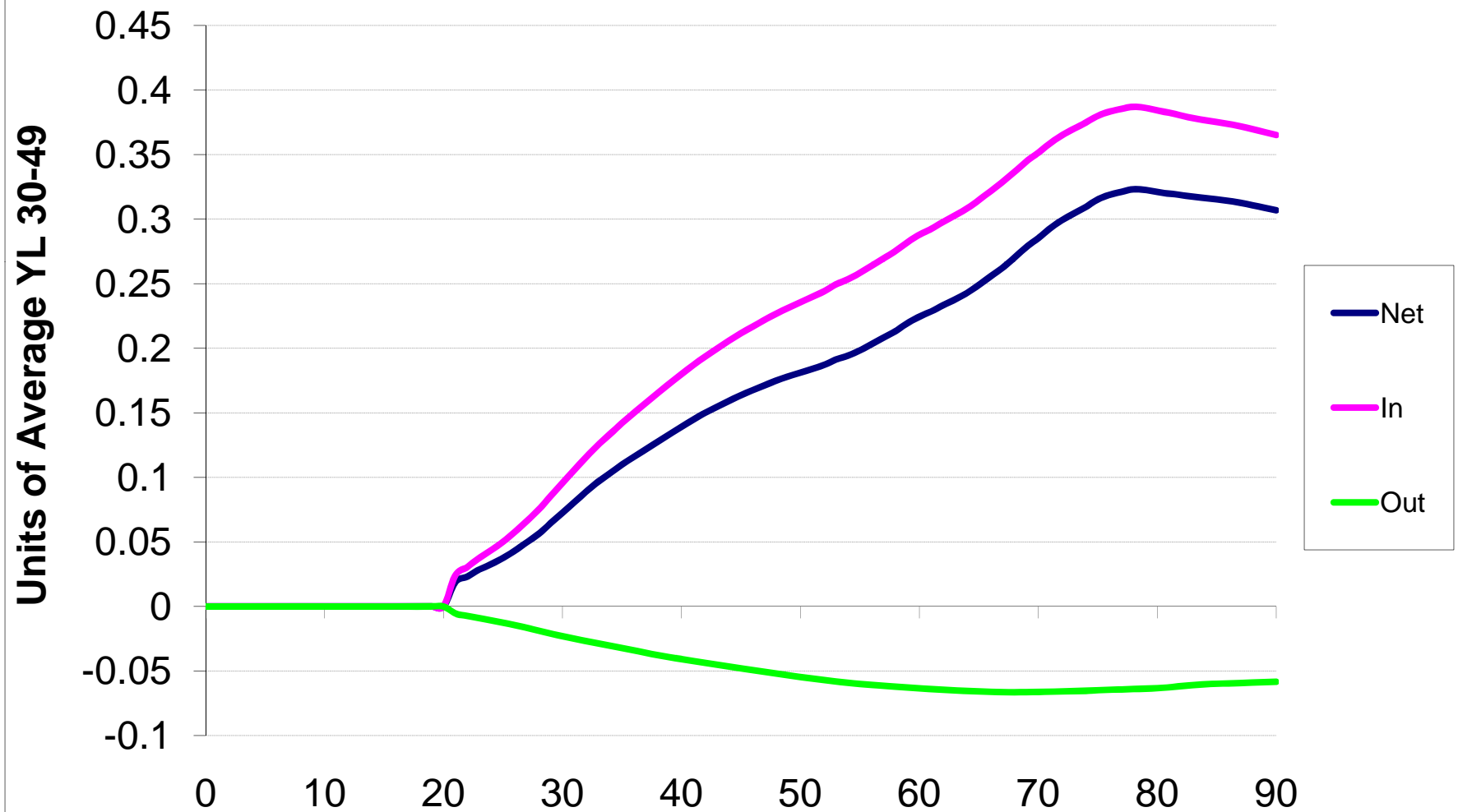
Public Transfer Inflows Components



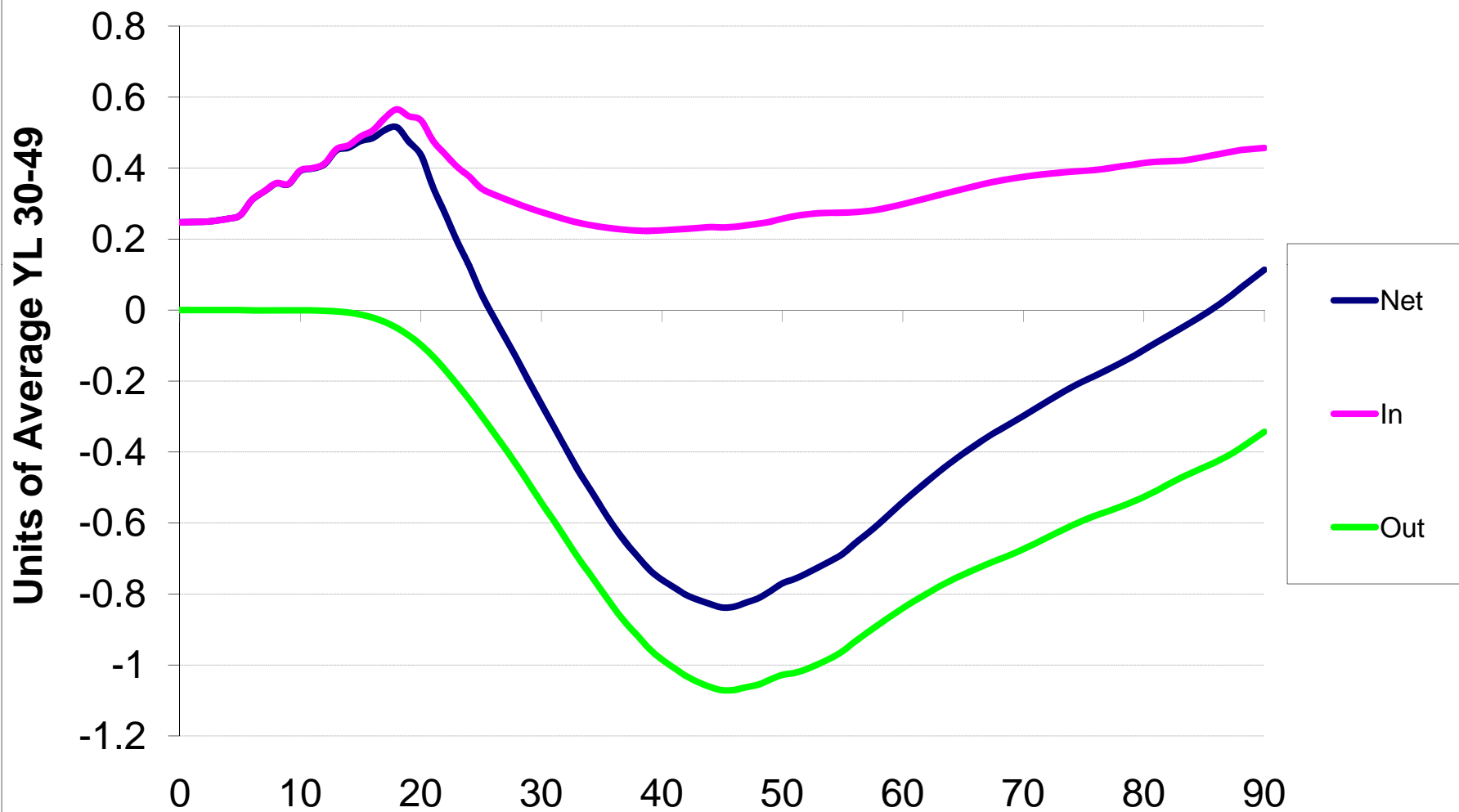
Public Transfer Outflow Components



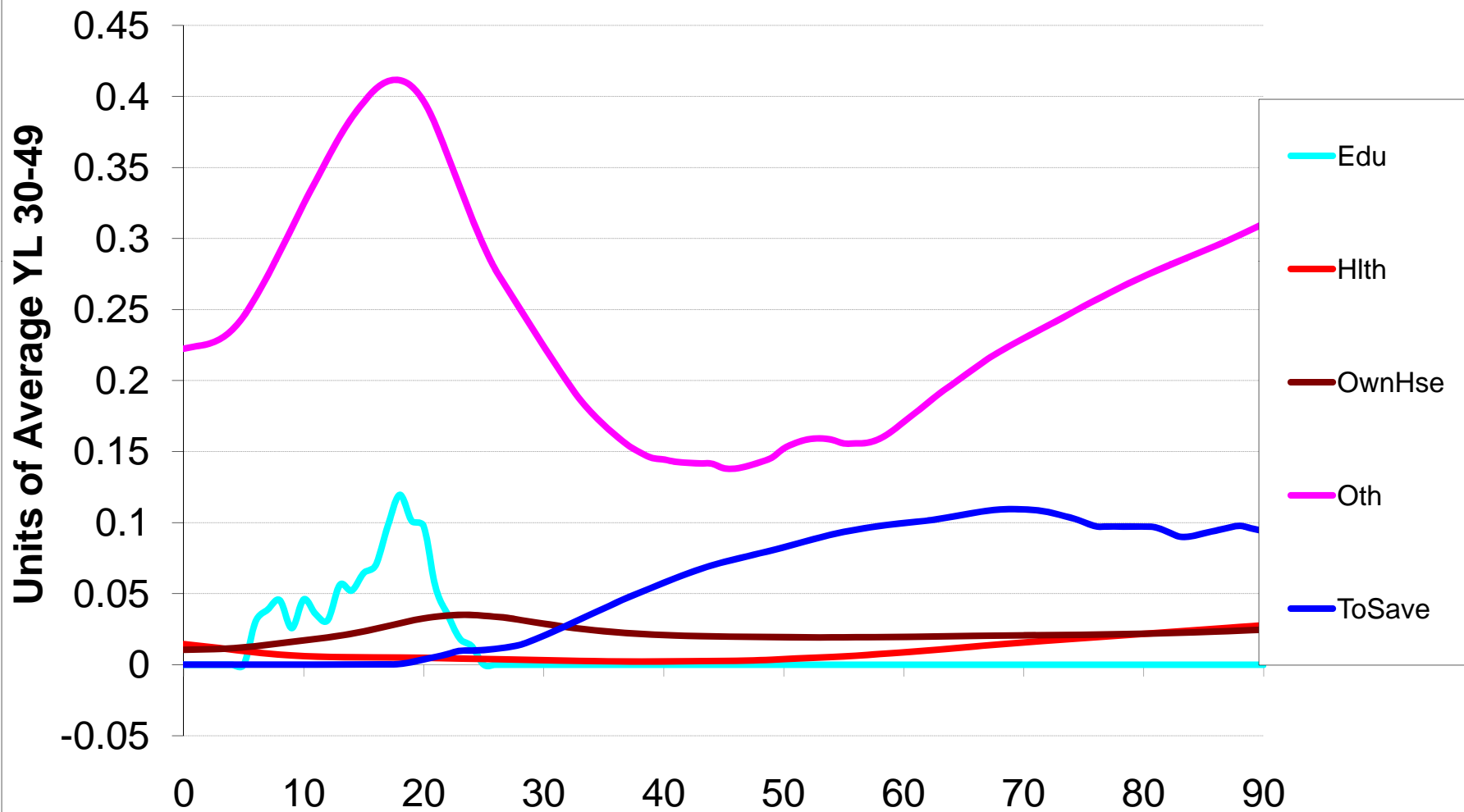
Private Interhousehold Transfers



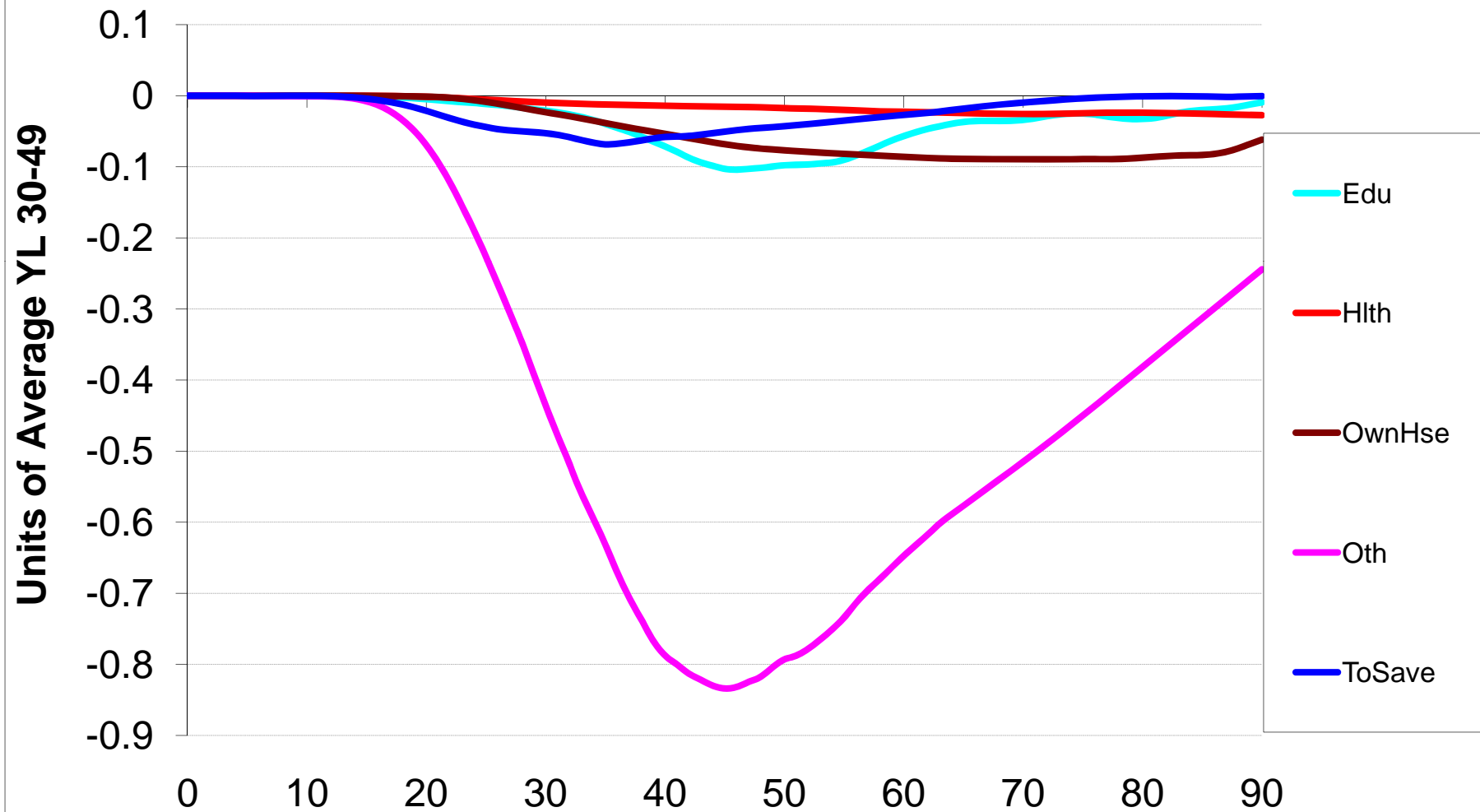
Private Intrahousehold Transfers



Private Intrahousehold Inflows

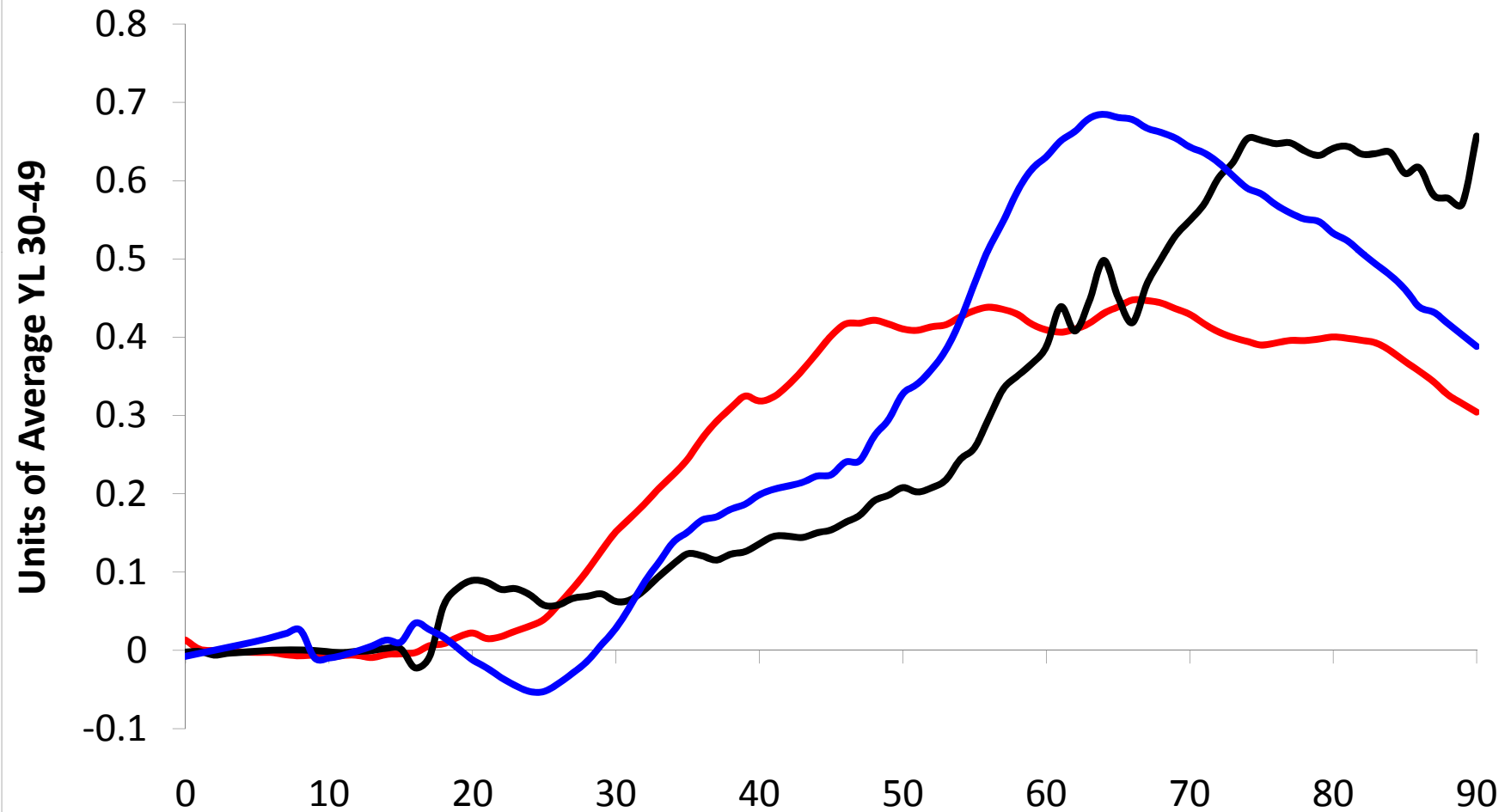


Private Intrahousehold Outflows



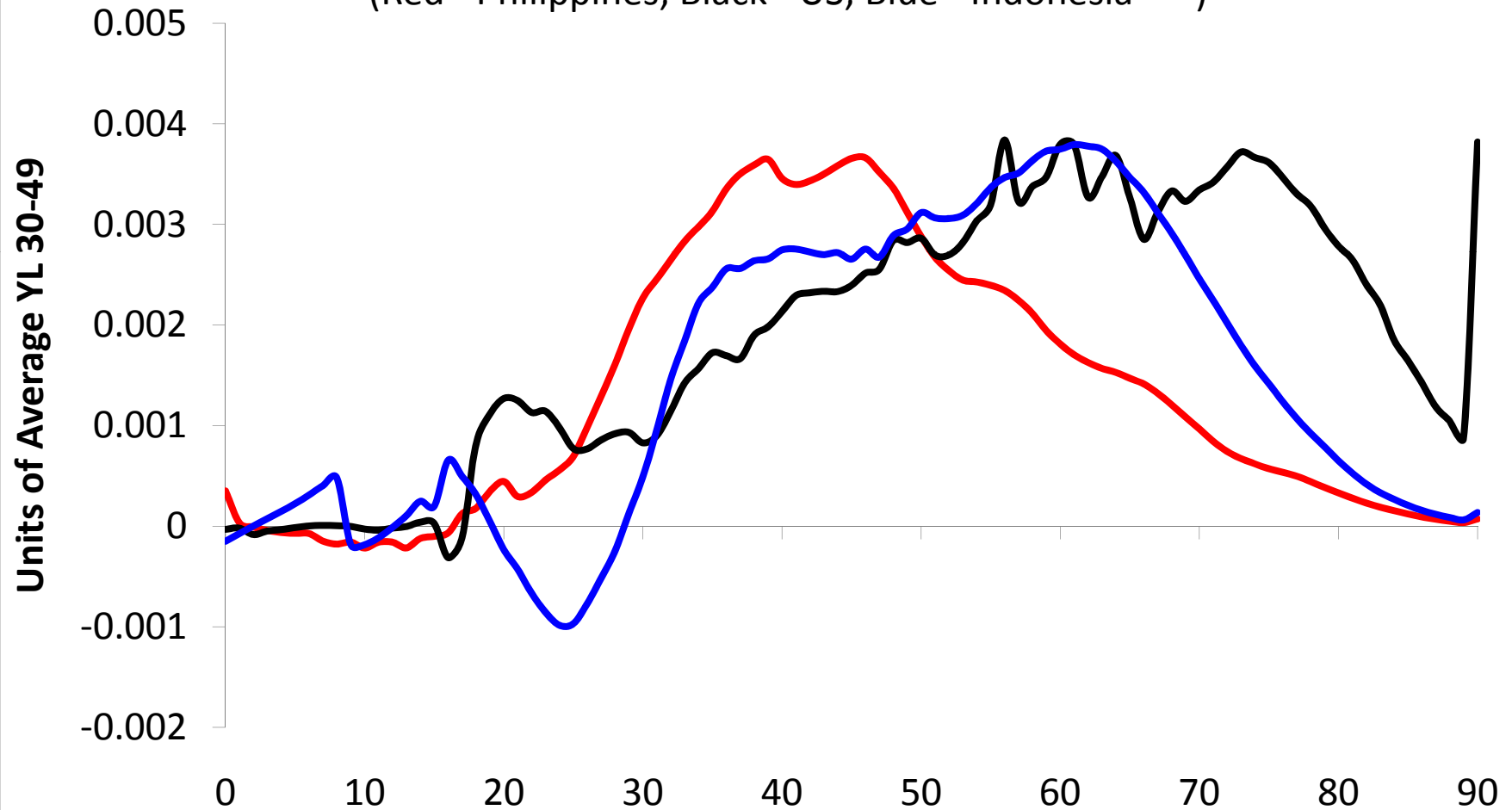
Asset-Based Reallocations

(Red - Philippines; Black - US; Blue - Indonesia***)

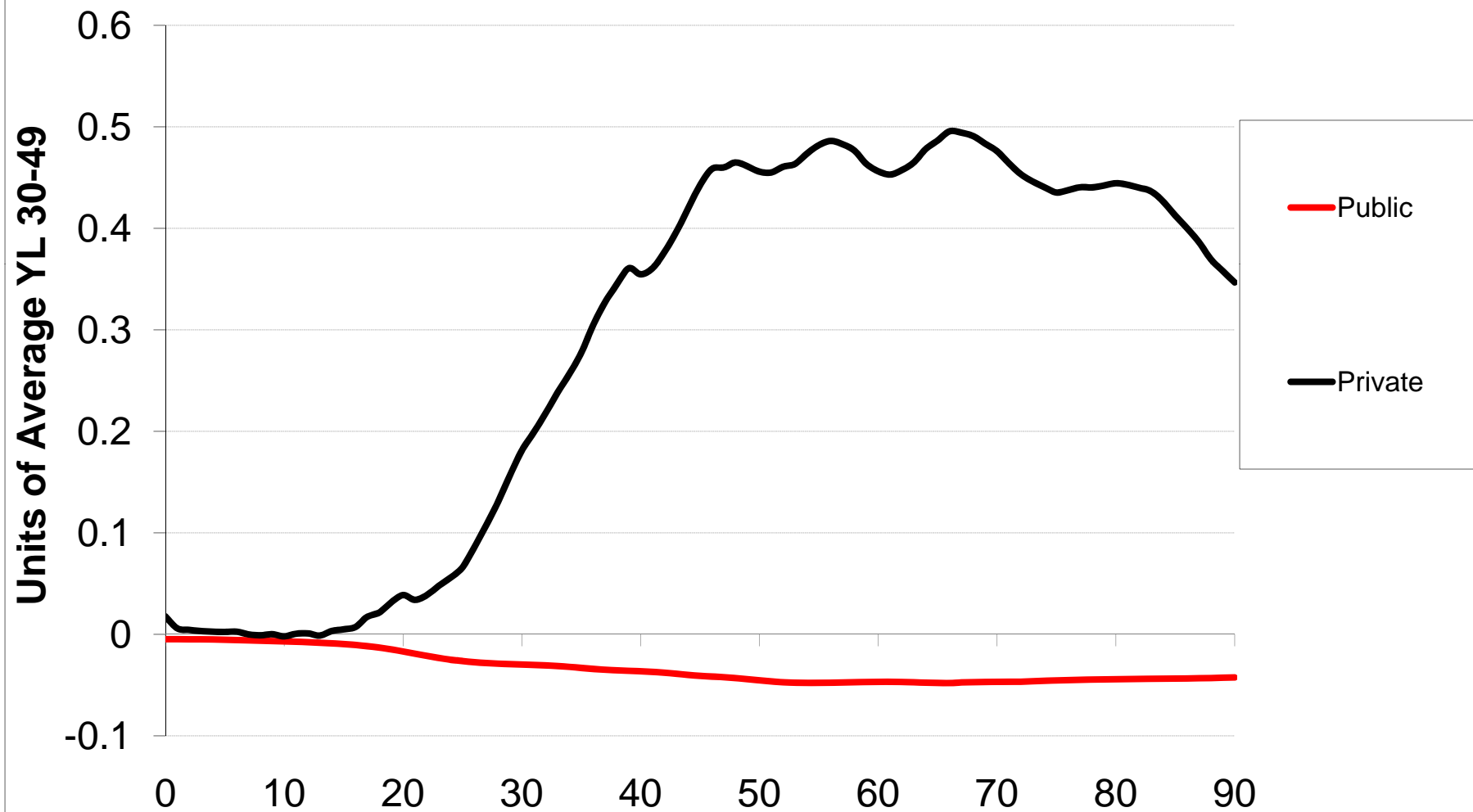


Asset-Based Reallocations POPULATION WEIGHTED

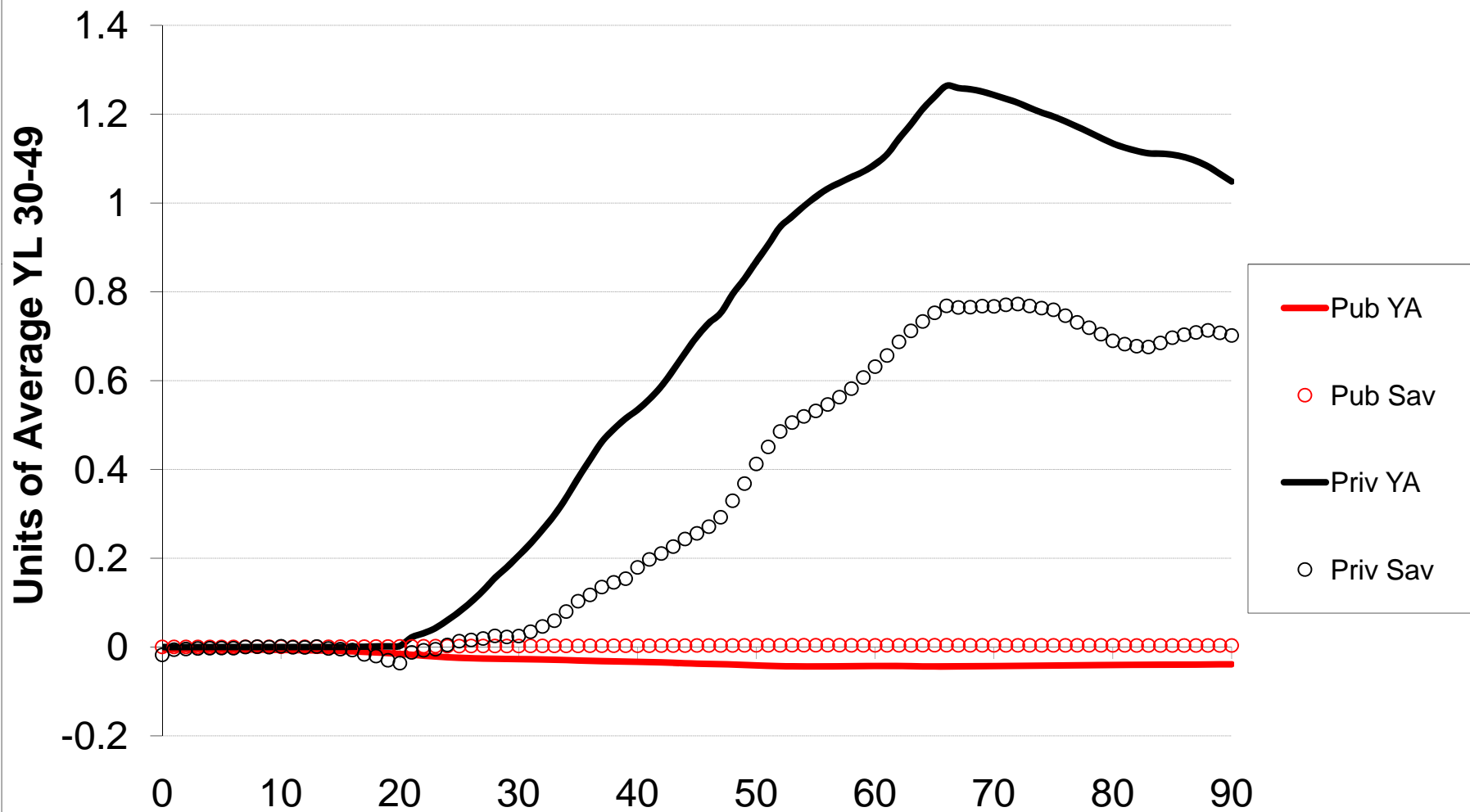
(Red - Philippines; Black - US; Blue - Indonesia***)



Asset-Based Reallocations, Public and Private

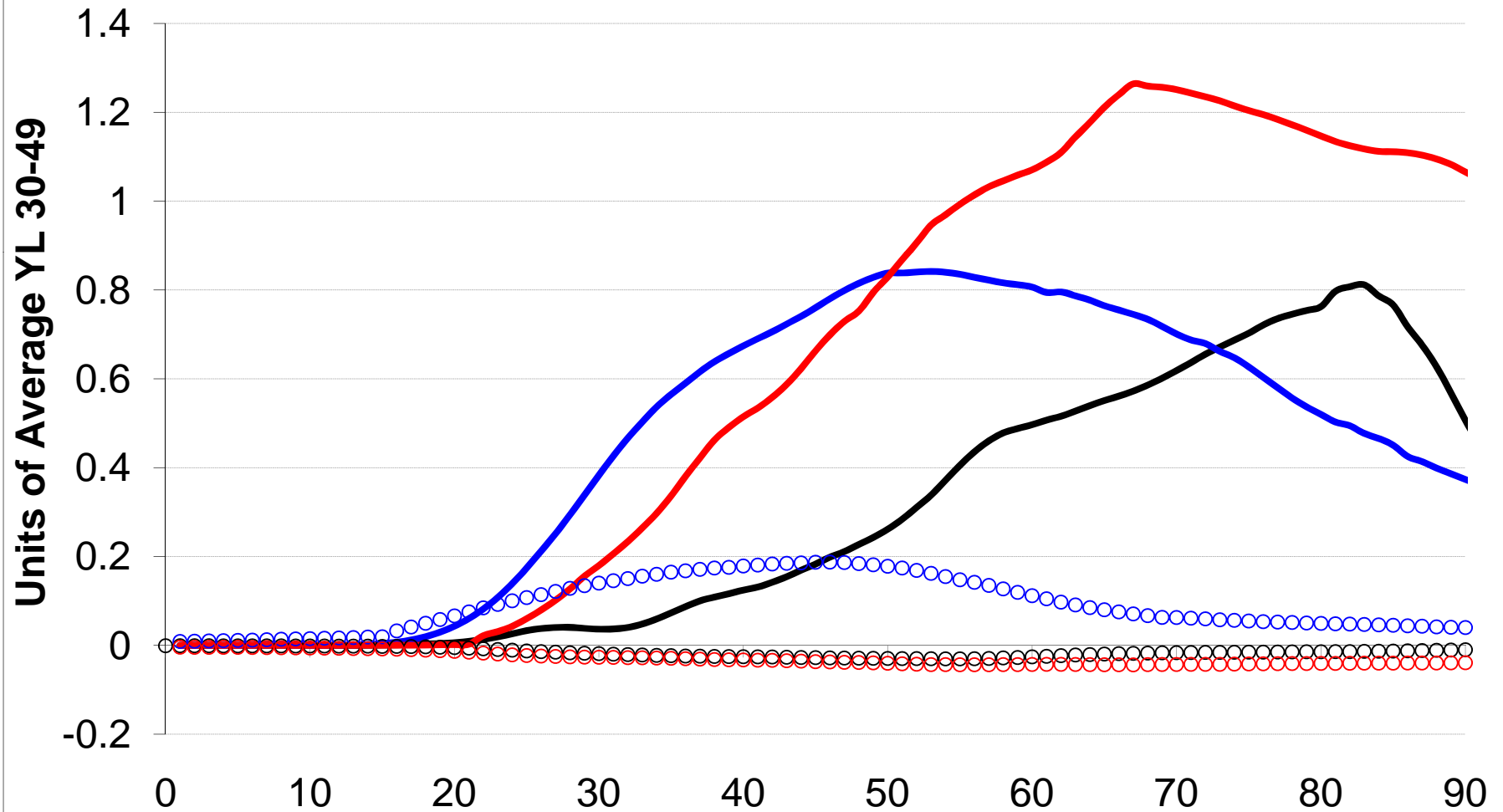


Asset-Based Reallocations, Asset Income & Saving



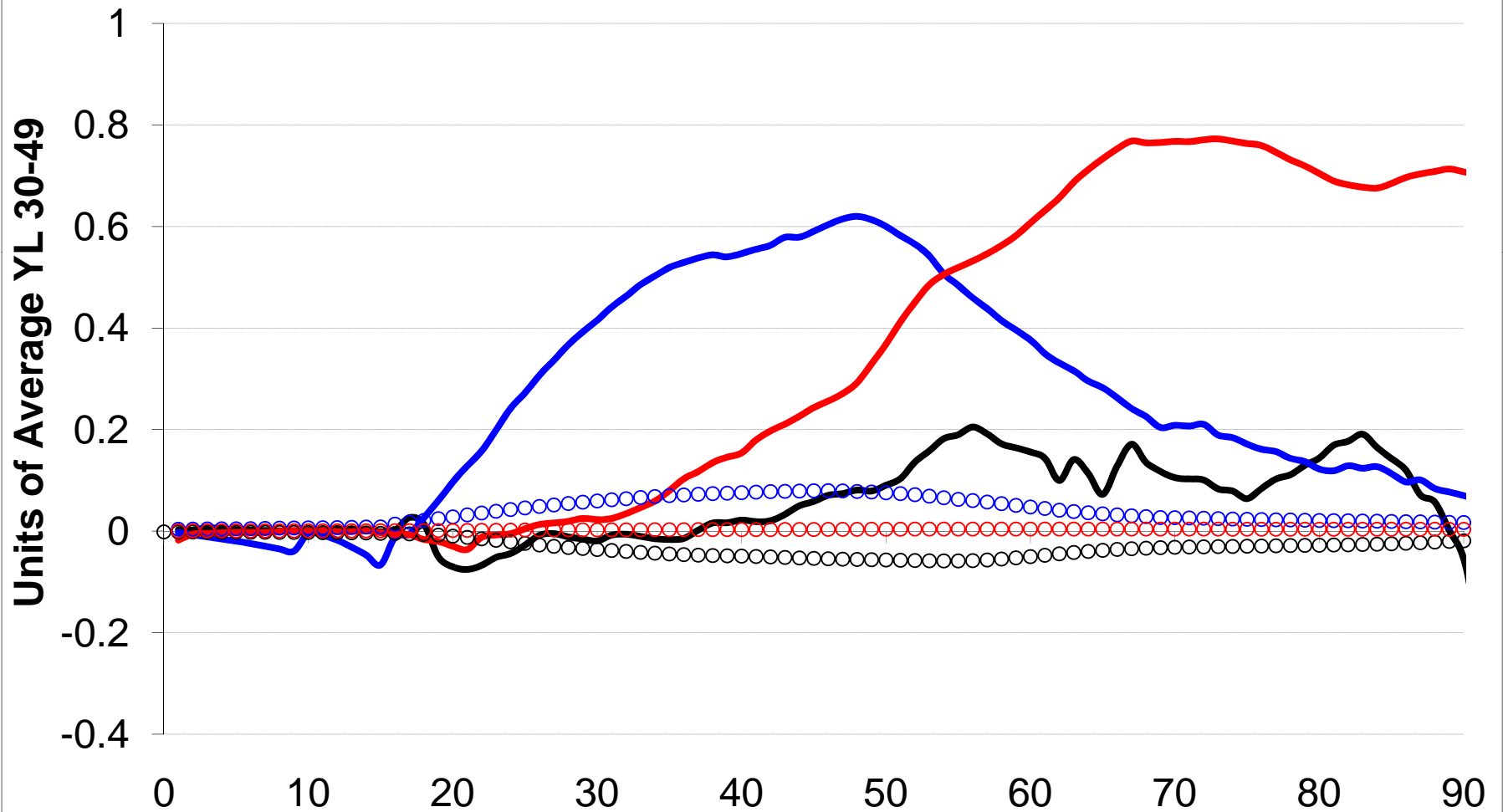
Comparative Asset Income

(Lines Private, Circles Public; Red - PH, Black - US, Blue - ID***)

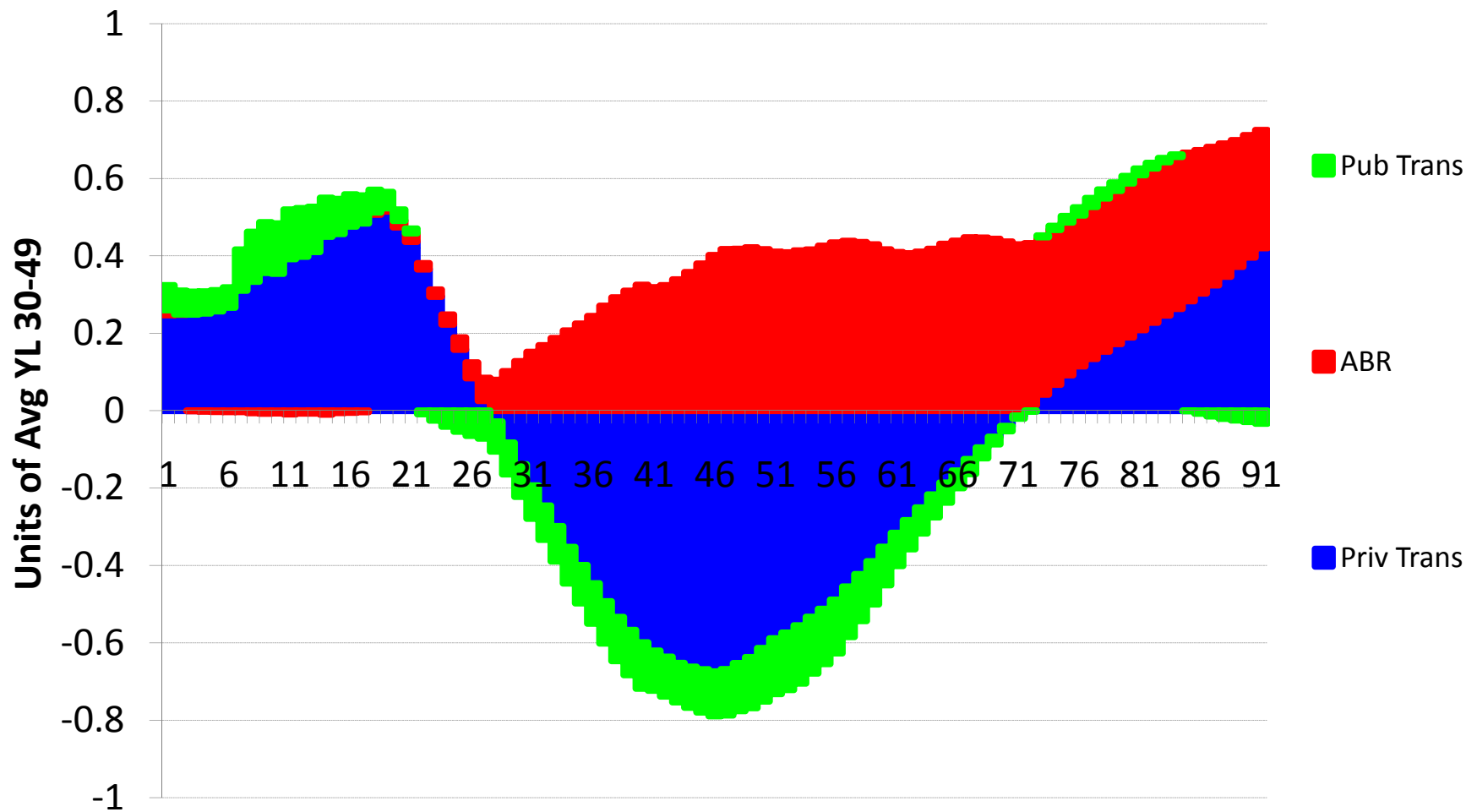


Comparative Saving

(Lines Private, Circles Public; Red - PH, Black - US, Blue - ID***)



Financing the Lifecycle Deficit Components at Each Age



FROM NIPA TO NTA									
	GDP BY EXPENDITURE APPROACH				GDP BY INCOME APPROACH				
	Final Consumption Expenditures	+ Gross Investment	+ Net Exports	= Compensation of Employees	+ Gross Operating Surplus	+ Gross Mixed Income	+ Taxes Less Subsidies on Products	+ Taxes Less Subsidies on Production	
1. Go from domestic to national basis by including relevant ROW accounts			PLUS net Primary Income from ROW	PLUS net Compensation of Employees from ROW	PLUS net property income from ROW		PLUS net Taxes Less Subsidies on Products from ROW	PLUS net Taxes Less Subsidies on Production from ROW	
2. Reallocate Gross Mixed Income to Labor (2/3) versus Capital (1/3)				PLUS (2/3) Gross Mixed Income	PLUS (1/3) Gross Mixed Income	LESS Gross Mixed Income			
3. Go from net to gross by removing CFC from both sides. (Take all CFC out of capital share of profits.)		LESS Consumption of Fixed Capital			LESS Consumption of Fixed Capital				
4. Reallocate taxes less subsidies on products by subtracting from both sides	LESS Taxes less subsidies on products						LESS Taxes less subsidies on products		
5. Reallocate taxes less subsidies on production by adding it to labor share of profits or capital share of profits				PLUS Taxes less subsidies on production assessed to labor	PLUS Taxes less subsidies on production assessed to capital			LESS Taxes less subsidies on production	
6. Reallocate net external balance from investment (i.e. saving) to net exports		LESS net external balance	PLUS net external balance						
Add up columns to get basic elements of NTA flow equation:	C	S	-T	=	YL	YA			
Sep public and private pieces of some main aggregates:	CF	SF	-TF	=	YL	YAF			
	CG	SG	-TG			YAG			

Life Cycle Deficit (LCD)					=	Transfers (T)		+	Asset-Based Reallocations (RA)				
Consumption (C)		-	Labor Income (YL)						Asset Income (YA)		-	Net Saving (S)	
Private (CF)	Public (CG)		Labor Earnings (YLE)	Fringe Benefits (YLF)	Self-Emp Income (YLS)	Private (TF)	Public (TG)		Private (YAF)	Public (YAG)		Private (SF)	Public (SG)
↓	↓			↓		↓	↓		↓	↓			
Health (CFH)	Health (CGH)			Health (YLFH)		IntraHH (TFW)	Health (TGH)		Capital Income	Capital Income			
Edu (CFE)	Edu (CGE)			Edu (YLFE)		InterHH (TFB)	Edu (TGE)		Property Income	Property Income			
Durables (CFD)	Other (CGX)			Other (YLFX)			Other In-Kind (TGXI)						
Owned Housing (CFR)							Other Cash (TGXC)						
Other (CFX)							Public Pensions (TGSOA)						