

INTEGRATED RESULTS FOR GA AND NTA FOR SPAIN: SOME IMPLICATIONS FOR THE SUSTAINABILITY OF THE WELFARE STATE*

Autores: *Concepció Patxot*⁽¹⁾

Elisenda Rentería⁽²⁾

Miguel Romero⁽³⁾

Guadalupe Souto⁽⁴⁾

P. T. N.º 7/10

(*) This work received institutional support from the Spanish Science and Technology System (Project Nos. ECO2009-10003 and ECO2008-04997/ECON) and from the Catalan Government Science network (Project Nos. SGR2009-600 and SGR2009-359 as well as from XREPP- Xarxa de referència en Economia i Política Públiques) and the Fulbright Commission (reference number 2007-0445).

(1) Centre d'Anàlisi Econòmica i de les Polítiques Socials (CAEPS), Universitat de Barcelona and Instituto de Estudios Fiscales (Spain).

(2) Universidade Federal de Minas Gerais, Belo Horizonte (Brazil).

(3) Center on the Economics and Demography of Aging, University of California, Berkeley (USA).

(4) Departamento de Economía Aplicada, Universidad Autónoma de Barcelona (Spain).

N.B.: Las opiniones expresadas en este trabajo son de la exclusiva responsabilidad de los autores, pudiendo no coincidir con las del Instituto de Estudios Fiscales.

Desde el año 1998, la colección de Papeles de Trabajo del Instituto de Estudios Fiscales está disponible en versión electrónica, en la dirección: ><http://www.minhac.es/ief/principal.htm>.

Edita: Instituto de Estudios Fiscales

N.I.P.O.: 602-10-026-2

I.S.S.N.: 1578-0252

Depósito Legal: M-23772-2001

INDEX

1. INTRODUCTION

2. METHODOLOGY

2.1. The national transfer accounts methodology

2.2. Measuring the demographic dividends using national transfer accounts

2.3. Comparing national transfer accounts and generational accounting

3. RESULTS FOR SPAIN

3.1. National transfer accounts for Spain (2000)

3.2. The first demographic dividend: pure demography and NTA approaches

3.3. NTA and GA integrated results: sustainability indicators

4. CONCLUDING REMARKS

APPENDIX

REFERENCES

SÍNTESIS. Principales implicaciones de política económica

ABSTRACT

The aim of this paper is twofold. First, the first estimates for Spanish National Transfers Accounts (NTA) are presented. The excess of total consumption on labour income –the life cycle deficit– and the way it is financed through age reallocations via market, public, or private transfers, is obtained. These estimates are then used to estimate the first demographic dividend. Second, this technique and Generational Accounting (GA) are combined to give a more complete picture of the effects of ageing on the economy. In particular, GA sustainability indicators are extended to include age reallocations which occur through family and market.

JEL Classification: E62, H55

Keywords: National Transfers Accounts, Generational Accounting.

I. INTRODUCTION

There is a broad literature on the effects of ageing on the sustainability of the welfare state using both pure theoretical and applied models. This literature is somehow fragmented, mostly due to the difficulties involved in obtaining testable predictions from sound theoretical models. This kind of difficulty, quite common in empirical economics, is especially strong in this setting as it involves both micro and macroeconomic aspects and intra and intergenerational distributional issues. While the theoretical tool at work in the analysis of the dynamic effects of fiscal policy is the general equilibrium overlapping generation's model (OLG), the applied works tend to deviate from it to some extent. On the one hand, one can find large scale applied general equilibrium OLG, which usually focus on the macroeconomic effects of ageing by taking as endogenous some key variables besides savings. On the other hand, arithmetic or behavioural microsimulation models, which must necessarily incorporate a simulation module of the main macroeconomic aggregates and the productivity level, aim to analyze intragenerational distributional issues¹. Somewhere in the middle, the so-called aggregate accounting models have been evolving steadily. Usually these models are oriented to macroeconomic issues, abstracting from general equilibrium effects considered in OLG models to avoid their complexities and/or constraints. Their main advantage arises from the fact that they are traditionally designed according to the available statistics and the legal framework in each country and thereafter aim to include a greater level of detail and heterogeneity. Thus, in some cases, accounting models tend to resemble arithmetic dynamic microsimulation models (Baekgaard, 2002).

Generational Accounting (GA) arose in the nineties, precisely to try to design a comprehensive empirical simulation technique avoiding the abovementioned modelling difficulties. It was developed by Auerbach, Gokhale, and Kotlikoff (1991) as a simplification of OLG models – i.e. avoiding general equilibrium considerations². Hence, its structure resembles, somehow, an aggregate accounting model, though the explicit reference to a sound theoretical model –eventually allowing for contrast³– gave way to develop internationally

¹ Behavioural models include some behavioural responses, while in arithmetic models all transitions are merely mechanical. Microsimulation models are also classified as static or dynamic, the latter being those that explicitly model the time, as usually occurs in any pensions model (See Dekkers *et al.*, 2009 chapter 2 for a survey).

² This is the way the method was first proposed although, clearly, some of the indicators obtained in this method can also be obtained in an OLG model.

³ Börstinghaus and Hirte 2001 compare GA results in partial and general equilibrium, concluding that results are not so different when the simulated policy reforms are similar enough.

comparable studies of welfare state sustainability (Auerbach *et al.*, 1999 and European Commission, 1999)⁴.

Another main drawback to this kind of simulation studies modelling the effects of ageing arises from data constraints. The National Transfers Accounts (NTA) research project started precisely to obtain internationally comparable, reliable estimations of the transfers occurring between age groups in an economy (Lee *et al.* 2003; Lee and Mason, 2004; Mason *et al.* 2006). A cooperative international network was established in order to assure that input data and estimates were fully comparable⁵. This implies not only the availability of a meaningful database but also a substantial improvement in input data for many of the abovementioned modelling approaches.

Interestingly, both applied methodologies –NTA and GA– come from quite different theoretical frameworks, while they turn out to be complementary to a great extent. On the one hand, GA started from the abovementioned dynamic fiscal policy literature. Focused on measuring the sustainability of the public budget in face of ageing, this method abstracts from general equilibrium changes in the factor prices to obtain forward-looking indicators of the implicit government debt. In practice, starting from the base year stock of debt and assuming constant *per capita* net tax payments by age, GA evaluates the sustainability of current fiscal policy using demographic projections. On the other hand, NTA came from the field of Demographic Economics. This methodology converts the whole set of a given base year National Accounts into age-specific flows full of economic meaning. Hence, age profiles are obtained for each aggregate, informing about how resources are transferred across generations through family, public sector or capital market saving. Quite intuitively, these profiles can be used to make predictions on the effects of demographic changes. For instance, the implications of changes in age structures on economic growth, the so-called *demographic dividends*, can be computed using NTA profiles. The *first demographic dividend* measures the increase in *per capita* income due to the rise in the share of working-age population characteristic in a demographic baby boom. The subsequent ageing process can also originate a *second demographic dividend* if capital accumulation is incentivized to meet this challenge. In this second case, population ageing could produce a permanent increase in capital (Mason, 2005; Lee and Mason, 2006; Mason and Lee, 2006).

The aim of this paper is to show the information provided by NTA for Spain in the year 2000 and to discuss how these estimates can complement the

⁴ See Jimeno *et al.* (2006) for a survey comparing aggregate accounting models, general equilibrium models and individual life-cycle profiles – the latter referring to cohort micro simulation models. See also Bonin (2001) and Bonin and Patxot (2005) for a survey focused on GA and related techniques.

⁵ See www.ntaccounts.org for details of the project and the participant countries.

projections derived in the GA tradition in order to analyze the direct effects of ageing, not only on the welfare state but also on the whole economy. The paper is organized as follows. Section 2 describes the main features of the NTA methodology, and discusses the way it can be used to analyze demographic dividends. Also, a combination of NTA data with GA is proposed in order to obtain indicators of public and private sustainability and hence some insights into the room left for the second demographic dividend. Section 3 is devoted to explaining the results for Spain. Finally, Section 4 gives some final remarks. The description of the databases employed is left for the Appendix.

2. METHODOLOGY

In this section we describe the methods employed in our analysis. First, we present the recently derived standardized NTA methodology, which mainly focuses on giving a cross-sectional picture of the intergenerational transfers occurring in an economy in a given year, in a manner consistent with National Accounts. Second, the way the so-called demographic dividends have been measured using NTA estimates is stated. Third, after a brief description of the GA method, well known in the literature, we describe the way in which the NTA and the forward-looking GA approach can be combined in order to obtain an illustration of the main trends affecting the demographic dividends in the future.

2.1. The National Transfer Accounts methodology

In all societies, a system to transfer resources across ages is necessary due to the fact that individuals consume throughout their life cycle, while they produce only during a limited period. National Accounts (NA) provides information about the main aggregates of the economic activity in a year, but not about the transfers across ages. NTA basically tries to disentangle those resources that move among the different age groups –called *age reallocations*– either through the capital market –called *asset-based reallocations*– through government intervention –tax payment and transfers receipts– or through both inter or intra family transfers. In order to do so, it translates all the NA aggregates in a given year into age-specific values as follows. The starting point is a transformation of the base year NA identity as:

$$Y_l + Y_a + \tau_g^+ + \tau_f^+ = C + I + \tau_g^- + \tau_f^- \quad [1]$$

Where Y stands for labour (l) and asset (a) income, τ for public (g) or family (f) transfer inflows (+) or outflows (-), C for consumption and S for saving. Rearranging, we obtain,



$$C - Y_l = Y_a - S + \tau_g^+ - \tau_g^- + \tau_f^+ - \tau_f^- \quad [2]$$

For the whole economy, though it also holds for each age group (e),

$$C(e) - Y_l(e) = Y_a(e) - S(e) + \tau_g^+(e) - \tau_g^-(e) + \tau_f^+(e) - \tau_f^-(e) \quad [3]$$

The left-hand side in [3], called *life cycle deficit* (LCD), is the excess of resources consumed by each age group. This must be financed either by asset-based reallocations (ABR) –asset income minus savings– or net public ($\tau_g^+ - \tau_g^-$) or family ($\tau_f^+ - \tau_f^-$) transfers, called TG and TF, respectively. Hence, we can also express [3] as,

$$LCD = ABR + TG + TF \quad [4]$$

Or,

$$LCD(e) = ABR(e) + TG(e) + TF(e) \quad [5]$$

As it holds both for the whole economy [4] and for each age cohort [5]. In the Appendix, the data employed to compute the four NTA profiles for Spain are detailed.

2.2. Measuring the Demographic Dividends using National Transfer Accounts

NTA standardized methodology works basically in a cross-sectional dimension. Nevertheless, some attempts have been made in this setting to obtain forward-looking and backward-looking estimates. The first and second demographic dividends are the main ones. In particular, estimations of the demographic dividends for the past and the future have been obtained by Mason (2005) and Mason and Lee (2006). The basic idea behind the first demographic dividend is that a baby boom generates a higher relative size of the working population and, hence, a demographically driven positive effect on income *per capita*. Starting from the decomposition of GDP or income (Y) *per capita* at year t as,

$$\frac{Y(t)}{N(t)} = \frac{L(t)}{N(t)} \frac{Y(t)}{L(t)} \quad [6]$$

Where N and L stand for the number of consumers and producers, respectively. The first term on the right-hand side is the so-called *support ratio*, while the other two terms are income *per capita* (income per consumer) and productivity (income per worker), respectively. Equation [6] does indeed show that income *per capita* can rise due to an increase in productivity, but also due to an increase in the demographic support ratio. More specifically, on transforming it into growth rates (g) by taking logs and deriving with respect to time, we obtain:

$$g_{\frac{Y}{N}} = g_{\frac{L}{N}} + g_{\frac{Y}{L}} \quad [7]$$

Showing that the income *per capita* growth rate is the sum of both productivity and the support ratio growth rates. The latter –the support ratio growth rate– has been called the *first demographic dividend*. Although it seems to be a pure demographical variable, Mason (2005) derives it by weighting the pure demographic variables –the number of people of working age and the total population– with the consumption and labour income age profiles obtained in NTA. Specifically, Mason (2005) uses the NTA profiles to compute the number of effective consumers and effective producers. Interestingly, this approach combines a strictly demographic concept –the demographic support ratio– with its economic counterpart, i.e. the number of effective consumers and workers⁶. Indeed, as Equations [8]-[11] show, the number of workers and consumers in a period t can be computed in a strictly demographic sense (D superscript) or in an economic sense (E superscript), weighting the number of people at each age by its appropriate economic magnitude,

$$L(t)^D = \sum_{e=16}^{75} N(e,t) \quad [8]$$

$$L(t)^E = \sum_{e=16}^{75} N(e,t) \cdot \eta(e,t) \quad [9]$$

$$C(t)^D = \sum_e N(e,t) \quad [10]$$

$$C(t)^E = \sum_e N(e,t) \cdot \lambda(e,t) \quad [11]$$

Where $\eta(e,t)$ and $\lambda(e,t)$ are, respectively, labour and consumption weights. In fact, Cutler *et al.* (1990) approached this issue obtaining four different estimates for the support ratio, deriving the four possible combinations of these measures of the number of consumers and producers. Given that combining a strictly demographic measure with a not-weighted measure seems less meaningful, we only obtain two combinations, a strictly demographic support ratio and an *economic* one. In the latter, we follow Mason (2005) in using the abovementioned NTA labour income and consumption *per capita* profiles to weight the population.

⁶ An even more refined measure can be obtained by decomposing Equation [6] further by introducing participation and employment rates. However, this is not helpful if appropriate age-specific data for the whole period analyzed are not available. Therefore, clearly, it is important to keep in mind that changes in Equation [7] ignore changes in unemployment and participation rates, which are kept constant in the NTA profile computed per person for the base year.



Going a step forward, it is worth considering that the increase in income *per capita* driven by the first demographic dividend allows –usually helped by an increase in longevity– for an increase in savings that might also foster productivity growth (Mason, 2005 and Cutler *et al.*, 1990)⁷. This so-called *second demographic dividend* is not as direct as the first. Besides, it is very much dependant on the way in which intergenerational transfers are financed. The second demographic dividend has also been measured by the same authors (Mason, 2005; Mason and Lee, 2006). In particular, they derive a life cycle forward-looking exercise, based on the available NTA cross-sectional profiles. They aim to estimate the present value of the wealth needed to finance the excess of future consumption over the labour income in each cohort of people aged 50 and older⁸. This is obtained as the excess of the present value of future consumption over the present value of future production. This estimation requires more elaboration and stronger assumptions referring to a steady state situation, which is far beyond what occurs during a demographic transition. Clearly, a general equilibrium approach is needed in order to obtain a sensible measure of the second demographic dividend. Hence, in our analysis we opt for using the NTA estimates in a more transparent way in order to give some insights into the expected trends shown by savings and other age reallocation devices, emphasizing the effect of a detailed demographic evolution. In Section 3 we show the results obtained by extending the GA projection method, obtaining a more intuitive illustration of the second demographic dividend.

2.3. Comparing National Transfer Accounts and Generational Accounting

As explained above, NTA and GA come from different theoretical frameworks. Nevertheless, given the coincidence of the phenomena analyzed –the interaction between Economics and Demography– both methods end up sharing very common features. Furthermore, the disparities due to their different focus, far

⁷ Cutler *et al.* (1990) pointed out the question in similar terms. They argue that the changing age-structure has the potential to yield benefits to a society for two reasons. First, it lowers the dependency ratio, which means that more resources can be invested in the economy. Together with this they mentioned a consumption dividend to be enjoyed while the labour force is relatively abundant. They were basically arguing that what Mason (2005) calls the first demographic dividend can be either consumed or invested. Second, the increase in longevity improves the population's savings behaviour, thus creating positive effects on income levels. See also Bloom and Williamson (1998), who showed that part of the Asian economic miracle was explained because the working-age population grew at faster rates than the dependent population from 1960 to 1995.

⁸ The justification comes from the fact that at age 50 one can assume that individuals are at a moment of higher capital accumulation, where their responsibilities from childbearing are over and their earnings have arrived at a peak (Mason, 2005).

from being an obstacle to combine them, give way to complementarities. Below we outline the fundamentals of GA in order to show how these potential complementarities can be exploited to shed some light on the debate on the economic consequences of ageing.

GA was shaped in order to measure the sustainability of the overall fiscal policy –especially the welfare state programmes– in the face of demographic ageing. In practice, it evaluates the extent to which the intertemporal budget constraint of the public sector holds, i.e. the extent to which the outstanding debt in the base year (B_t) will be covered by future net surpluses (S_s), assuming a constant discount rate (r),

$$B_t = \sum_{s=0}^{\infty} S_s (1+r)^{t-s} = \sum_{k=t-D}^t N_{t,k} + \sum_{k=t+1}^{\infty} N_{t,k} \quad [12]$$

Besides, the last expression in Equation [12] indicates that future surpluses are, in turn, raised from net payments (N) from present and future generations. With D being the maximum life span, by adding $N_{t,k}$, the first term adds up net payments from currently living generations –born from the base year t to the last D years– while the second groups the net payments of generations born from the base year on.

The estimation procedure starts from the aggregate net payments of living generations obtained by imputing the base year budget aggregates by age and gender. The assumption of constant fiscal policy permits these payment profiles to be maintained constant for future generations and, hence, to obtain the value of the right-hand side in Equation [12]. A positive (negative) residual means an implicit debt (wealth) called *sustainability gap*. The method keeps the age profiles constant for all tax payments and transfer receipts. Note that these profiles are very similar to those derived to obtain TG in NTA. Then, in order to properly account for the fact that subsequent cohorts are, in principle, more productive, a constant productivity growth rate is applied to obtain the longitudinal profiles.

The basic sustainability indicator obtained in the GA tradition is the present value of total liabilities –the residual estimated in equation [12]– in relation to the payment capacity – the present value of predicted future GDP⁹. Other indicators usually produced in GA studies are *generational accounts*, i.e. the *per capita* net payment made by each of the presently living generations and the representative of the future generations. Similar indicators could be derived

⁹ The first GA studies used to show future liabilities as a share of base year GDP, but this indicator was subsequently refined. Given that the sustainability gap –the measure of intertemporal implicit debt– refers to the future, a similar figure is included for payment capacity: the sum of the present value of future expected GDP.



using NTA information, but for our purpose we will mainly focus on the cross-sectional indicators.

Hence GA and NTA share some basic elements. Both methods start from a given base year t , and analyze the interaction among some basic macroeconomic aggregates and the age structure of the population. Also, in both cases the incidence of the aggregates is reflected in age profiles extracted from micro data which are considered somehow constant. The following are the main differences between the two techniques. First, in GA the interest in obtaining long-term projections necessarily implies a forward-looking perspective by projecting the estimates obtained for the base year to the future, while NTA only focus on the base year. Second, NTA apply the same imputation method to all the National Accounts aggregates in the base year, while GA does so only to public sector aggregates. In this respect, both methods turn out to be complementary. Though for the moment standard NTA sticks to the base year, it takes a more comprehensive perspective of this. It can thus complement the picture of the future given by GA. On the one hand, both methods might be helpful to derive backward-looking and cohort analysis as long as data are available¹⁰. On the other hand, the cross-sectional estimates obtained in NTA can enrich the forward-looking estimates obtained in GA¹¹.

Following the GA procedure we can hold the age structure of the four basic NTA profiles constant in Equations [4-5] and project them to the future by using a given productivity growth rate. Thus, the projection of all the NTA profiles complements the picture given by GA projections. Clearly, the mere projection of the age profiles with productivity is less reliable in the case of capital income and savings –the two components of the *ABR*. Hence, we will take this into account when interpreting the results. Basically, one should bear in mind that the main limits of the GA approach apply– in particular, the failure to capture the general equilibrium changes in prices due to changes in the population structure. Indeed, these changes can be non-negligible although some of them, like the change in the interest rate due to the change foreseen in capital intensity, might be reduced in an open economy framework. In any case, as shown in the next Section, a battery of informative economic indicators, in the spirit of the demographic dependency rate, can be obtained.

¹⁰ In fact, in GA it is usual to obtain life cycle indicators of the net payments of each cohort though those are all based on cross-sectional data. There are also some attempts to use NTA estimates both for backward and forward-looking analysis. The former has been basically employed to compute the first demographic dividend (Mason, 2005). The latter has been used to obtain a future forecast of different welfare state programmes.

¹¹ Another technical similarity is that both methods aim to obtain both flow and stock estimates. Specifically, GA estimates the implicit stock of debt by means of adding future net surpluses to the initial outstanding debt. The NTA standard method has only established clear bases to estimate the flow account while it is aiming to estimate a stock account.

Furthermore, this might give interesting insights regarding the first and the second demographic dividends.

3. RESULTS FOR SPAIN

Below we show the results obtained in our analysis for Spain. First, the NTA estimates are presented taking 2000 as the base year. Second, the evolution of the first demographic dividend during the Spanish demographic transition is shown. Third, by integrating the NTA age profiles into the GA projection method, several economic indicators of the impact of demographic evolution on the economy are obtained.

3.1. National Transfer Accounts for Spain (2000)

As explained above, NTA disentangle aggregate transfer flows among ages in the economy for a given year in a way consistent with National Accounts (NA). Table I shows the main aggregates of Spanish National Accounts for 2000, and their correspondence to NTA aggregates. Most of the rearrangements are for the purpose of assigning all those aggregates that can be attributed by age to one of the main NTA aggregates summarized in Equation [1]. The detailed procedure and micro data sources employed in estimating the age profiles are summarized in the Appendix. Only two specific NTA assumptions are applied to the aggregate accounts. First, indirect taxes are imputed either to capital or consumption, adopting a standardized hypothesis: all indirect taxes are overconsumption except those on financial transactions and 1/3 of the residual category “other taxes on consumption.” Second, in order to disaggregate labour and non-labour income it is assumed that 1/3 of the mixed income is capital income, the other 2/3 being labour income. This is also a common hypothesis in NTA methodology.

As shown in Table I, the aggregate life cycle deficit represents more than 10% of the net national disposable income in year 2000. This excess of consumption over labour income is covered mainly through private asset-based reallocations. Public asset reallocations are negative because the net public asset income is negative and higher than the –positive– public saving. The aggregate value of family transfers should be equal to zero in a closed economy, while it is equal to the net transfers –a relatively small negative amount– from the rest of the world in Spain, in an open economy. The same happens for *TG* as the excess of taxes over transfers –the *transfers surplus*– equals public *ABR*. *TG* is then equal to the rest of the world net public current transfers. As seen above, in this case it is devoted to paying net asset income and to saving.



Table I
FROM NATIONAL ACCOUNTS TO NATIONAL TRANSFER ACCOUNTS,
SPAIN (2000) (in million of current euros)

| A) National Accounts: Net National Disposable Income | | | |
|---|----------------|-------------------------------------|----------------|
| Consumption | 484,359 | Compensation of Employees (CE) | 312,176 |
| Government Final Consumption | 108,360 | Net CE from ROW | -156 |
| Private Final Consumption | 375,999 | Operating Surplus (OS) | 255,488 |
| Net Saving | 54,235 | Net Prop & Entrep Income from ROW | -6,983 |
| Public Saving | 9,103 | Indirect Taxes Less Subsidies (NIT) | 62,599 |
| Private Saving | 45,132 | NIT from ROW | 1,831 |
| | | Net Current Transfers from ROW | -304 |
| | | Consumption of Fixed Capital | 86,057 |
| Total | 538,594 | Total | 538,594 |
| B) National Accounts: Public Sector Accounts | | | |
| Property income, payable | 20,424 | Taxes on production and imports | 64,430 |
| Social benefits other than in kind | 75,470 | Property income, receivable | 6,979 |
| Other current transfers | 7,960 | Current taxes on income and wealth | 64,002 |
| Government final consumption | 108,360 | Social contributions | 81,146 |
| Saving, net | 9,103 | Other current transfers | 4,760 |
| Total | 221,317 | Total | 221,317 |
| Net lending (+)/Net borrowing (-) | -6,283 | | |
| C) National Transfer Accounts Aggregates | | | |
| Lifecycle Deficit (LCD) | | | 56,955 |
| Consumption (C) | | | 427,361 |
| Private Consumption ⁽¹⁾ | | | 319,001 |
| Public Consumption | | | 108,360 |
| Less: Labour Income (Y _l) | | | 370,406 |
| Age Reallocations (AR = ABR + TG + TF) | | | 56,955 |
| Asset Based Reallocations (ABR) | | | 57,259 |

| C) National Transfer Accounts Aggregates | |
|---|---------|
| Public ABR | -22,548 |
| Public Income on Assets | -13,445 |
| Less: Public Saving | 9,103 |
| Private ABR | 79,807 |
| Private Income on Assets | 124,939 |
| Less: Private Saving | 45,132 |
| Transfers (TG + TF) | -304 |
| Public Transfers (TG) | 358 |
| Private Transfers (TF) | -662 |

(1) Private consumption in NTA is obtained as Private Final Consumption in National Accounts less net indirect taxes on consumption.

Source: Panel A from INE (*Contabilidad Nacional de España*) and Panel B from own elaboration.

In Table 2, the NTA aggregates by age groups are presented. One can observe that young LCD is mainly financed with private transfers. Old people use public transfers and asset income to cover their excess consumption, but also to make transfers to the young, a particular characteristic for Spain. Probably, the relatively high co-residence of elderly has a role in the explanation of this phenomenon.

Table 2
NTA AGGREGATES BY AGE GROUP (in million of current euros)

| | 0-15 | 16-64 | 65 and more | Total |
|-----|-------------|--------------|--------------------|--------------|
| LCD | 53,978 | -67,238 | 70,214 | 56,955 |
| TG | 21,193 | -65,338 | 44,503 | 358 |
| TF | 33,418 | -24,811 | -9,269 | -662 |
| ABR | -633 | 22,912 | 34,981 | 57,259 |

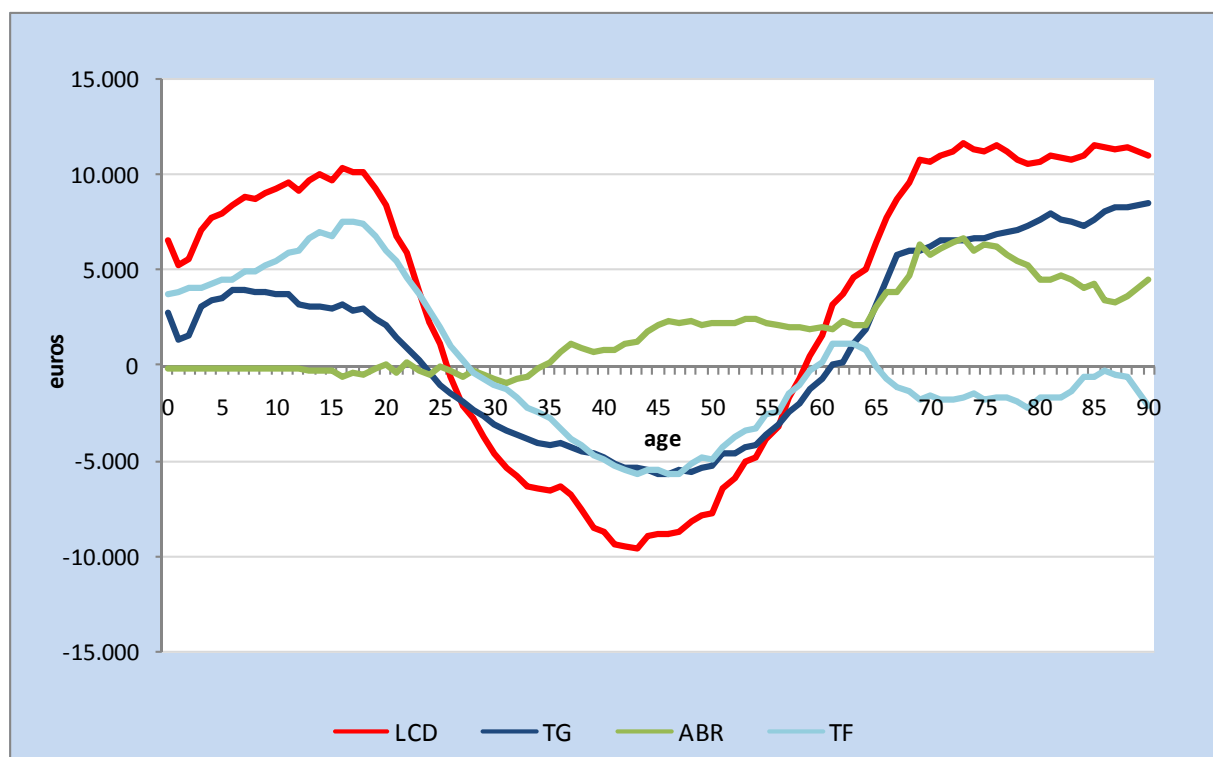
Source: Own elaboration.

In Figure 1, the National Transfer Accounts age profiles obtained for Spain in 2000 are shown. It plots the four main *per capita* age profiles as in Equation [5], i.e. the life cycle deficit (LCD), together with the three possible ways of reallocating resources between age groups: public transfers (TG), private transfers (TF) or asset-based reallocations (ABR). The figure is quite illustrative. First, as expected, LCD is positive outside working age (from 26 to 58 in this

case), that is, individual consumption exceeds labour income for those ages, while it is negative during working age. Second, as a consequence of their economic dependence, the young and the old receive net transfers from the government –TG is positive– while they contribute –TG becomes negative– during the productive ages. Note that the cut-off ages for LCD and TG are not exactly the same – TG is negative from 24 to 60. This is due to the role of the other age reallocation devices, i.e. asset-based reallocations and private transfers.

If we consider strictly lifecycle savings, omitting bequests, the natural age shape of ABR is zero until age 15, as there are neither assets, nor asset income. Later, as individuals can enter the labour market and start saving, ABR becomes negative and stays so, as long as savings exceed asset income. ABR becomes nil if all asset income is saved and starts being positive when saving is overtaken by asset income. The absence of a negative initial ABR can be due either to a bequest received that generates Y_a higher than S or to the fact that adults become indebted to finance their consumption or transfers to their children. Intergenerational transfers can interact in many more ways as, together with bequests, *inter vivos* transfers from grandparents to children or grandchildren, or from children to parents can occur. For Spain, ABR is clearly positive only from age 35 and it is especially high from age 65. This could contribute to the positive transfers of elderly shown in the TF profile.

Figure 1
PER CAPITA NATIONAL TRANSFER ACCOUNTS, SPAIN (2000)



Source: Own elaboration.

3.2. The first demographic dividend: pure demography and NTA approaches

The main trends of the Spanish population during the XX century and its expected future evolution are shown in Figure 1. It plots the dependency rate obtained for total population (TDR) as well as for the young (YDR) and the old (ODR) separately. Population data are obtained as follows. On the one hand, past population is taken from the Human Mortality Database (HMD) containing population data by age and gender from 1908 to 2006, though some adjustments are needed¹².

On the other hand, future population is projected using Leslie projection matrices. These projections are based on assumptions similar to the most recent Eurostat population projections (Eurostat, 2008). First, future fertility is taken from projections developed by INE, detailing age-specific fertility rates for the period 2002-2031. The total fertility rate thus goes from 1.34 in 2006 to 1.53 children per woman in 2030 and stabilizes from then on. Mortality is assumed to increase linearly, so that average life expectancy increases by three years. Finally, in line with Eurostat assumptions, future immigrants –the observed level is taken until year 2008– are assumed to decrease first sharply until 2020 and later more steadily. The final value is 130,000 from 2060 on¹³.

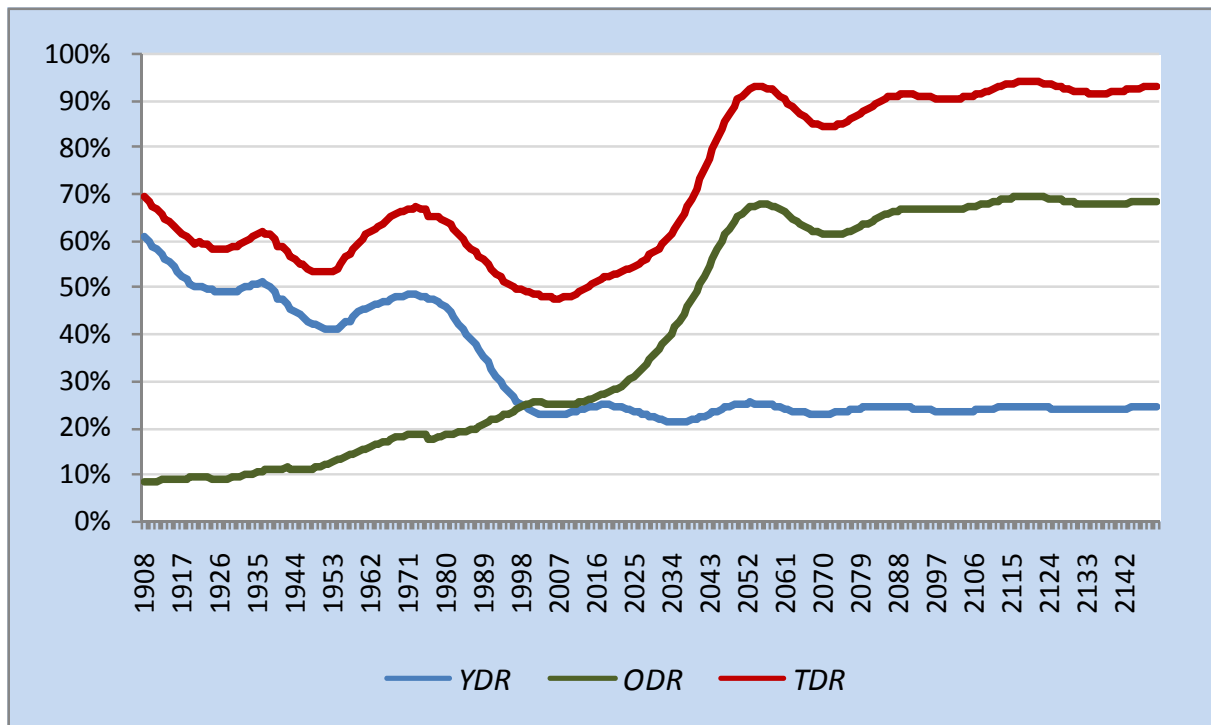
Clearly, uncertainties in demographic projections are not as serious as they are in other economic settings. It might seem irresponsible to say this in the Spanish case, given the recent immigration flow which increased the population by more than 5 million from 2000 to 2008. Nevertheless, although the absolute number of people can vary quite erratically, the indicators shown in Figure 2 are much more predictable. In fact, one can observe the effect of the abovementioned migration inflow in a scarce increase in ODR from 25.01% in 2000 to 24.55% in 2007, also reflected in the other two ratios (TDR and YDR)¹⁴. It does not seem possible to escape from the doubling of the dependency rate from 2010 to 2060 – the ODR increases by 268% while TDR increases by 189.19%. Even considering a sizeable entry of migrants, the retirement of the baby boom generations will imply a huge increase in the dependency rate.

¹² For the first decades –until the year 1960– an unrealistic peak is observed in ages finishing in “9”. Hence, a smoothing procedure is applied using inverse projection matrices.

¹³ The last official projections derived by INE (2005) assumed in the baseline a gradual reduction of the annual net immigrants, from the current more than half a million to a constant value of 260,000 in 2060. A low immigration hypothesis (tending to 100,000) was derived in order to give a similar outcome to the past European projections (Eurostat, 2006). The new Eurostat projections are more realistic in the initial value of immigrants but still assume a lower long-term level.

¹⁴ This decrease in dependency is also due to a decrease in the elderly as a result of the smaller generations born during the Spanish Civil War and post-war period.

Figure 2
DEMOGRAPHIC DEPENDENCY RATES IN SPAIN (1908-2150)



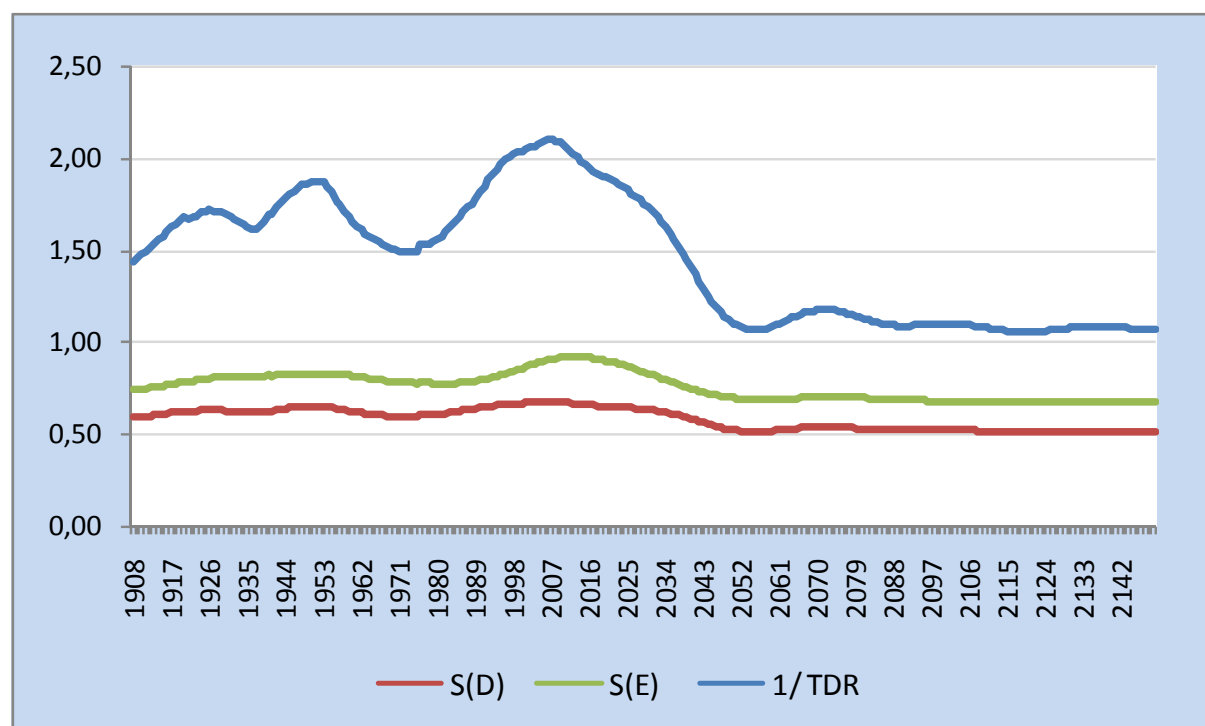
Source: Own elaboration

But the positive counterpart of this ageing, giving way to the first demographic dividend, is an often forgotten striking demographic fact. According to Figure 2, the present situation is, in terms of demographic dependency, the best possible in more than two centuries. On the one hand, despite the constant increase in ODR over the period analyzed, around 2000, the rate of increase was still moderate. On the other hand, the YDR has reached a stable value after a whole century of steep decrease. Hence, total dependency is the lowest in the first decade of the XXI century, and will become the worst once the steep increase in ODR starts in 2020. Moreover, its final value will be clearly worse than the initial one at the beginning of the XIX century. Overall, the TDR has gone from a high value at the beginning of the XX century - due to young dependency - to a low value at the beginning of the next century - due to a huge increase in the working age population. In the coming decades, it will go up to a constant higher level, once the baby boom generations pass away and stable population is reached with higher life expectancy and lower fertility.

These well-known purely demographic indicators can be enriched by using NTA estimates. In particular, as seen in Section 2.2, one can weight producers and consumers as in Equations [9] and [11], using the labour income (Y_l) and consumption (C) age profiles. Figure 3 compares this *economic support ratio* (S^E) to the strictly demographic indicator (S^D) obtained from Equations [8] and [10]

and to the inverse of the total dependency ratio shown above. By construction, the inverse of TDR is higher and changes more than S^D . The time path of S^E and S^D is quite similar though some differences remain. The level of S^E is above the one of S^D . Also, the main peaks of S^E occur after the corresponding peaks of S^D . The evolution of the S^D is slightly smoother. The maximum and minimum values due to the ageing of the baby boom generations go from 0.68 in 2007 to 0.52 in 2055 for S^D , while for S^E they go from 0.92 to 0.69 in the same period. Hence, the consideration of the NTA profiles does not at all reduce the threats ageing poses on the economy and on public finances.

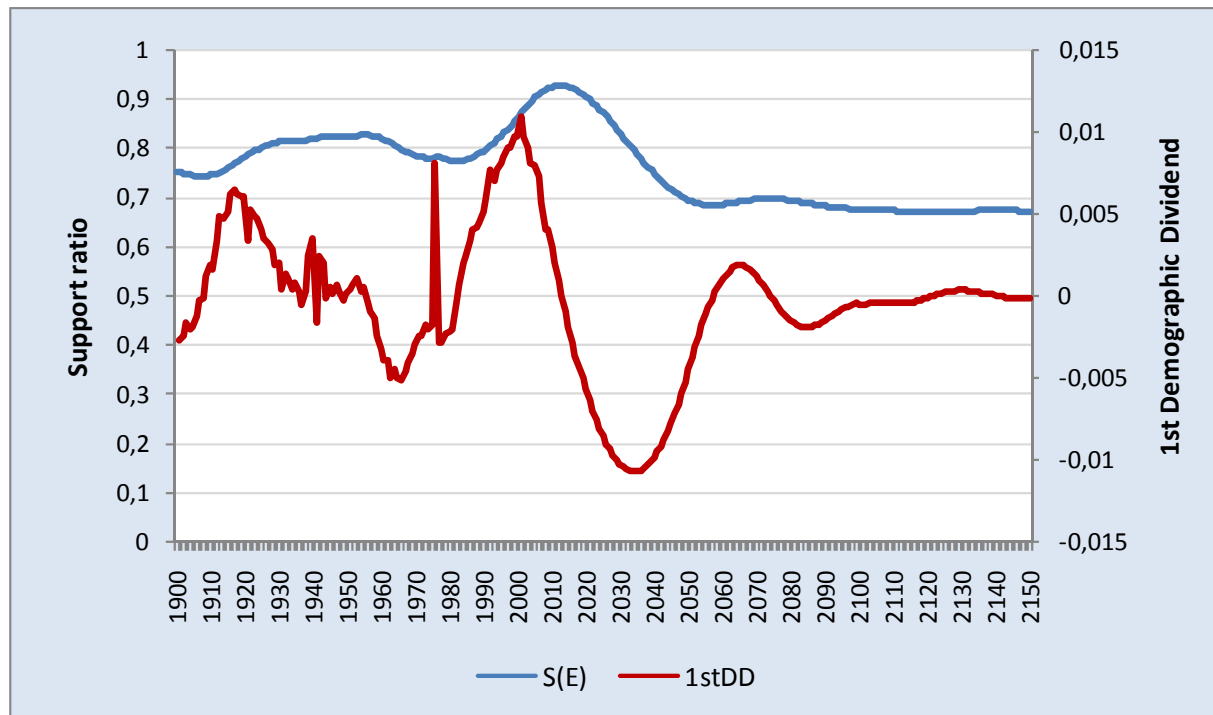
Figure 3
DEMOGRAPHIC S^D AND ECONOMIC S^E SUPPORT RATIO
IN SPAIN (1908-2150)



Source: Own elaboration.

As explained in Section 2, Mason (2005) measured the first demographic dividend as the increase in the economic support ratio estimated using the NTA age profiles for consumption and labour income. Figure 4 shows the evolution of the S^E ratio together with its increase –the first demographic dividend– obtained for Spain. One can observe that there have been some periods of positive demographic dividend during the past century in Spain, but the longest one is the demographic dividend due to the working period of the baby boom generation, occurring from 1982 to 2013. Clearly, this golden period would have been precious in terms of reform opportunities, but it is coming to an end.

Figure 4
ECONOMIC SUPPORT RATIO AND FIRST DEMOGRAPHIC DIVIDEND IN SPAIN (1908-2150)



Source: Own elaboration.

3.3. NTA and GA integrated results: Sustainability indicators

The combination of NTA and GA methods as set forth in Section 2.3 allows some informative indicators to be extracted on the effects of demographic changes on the economy. Indeed, the application derived above for the first demographic dividend is an example of how the cross-sectional information given by NTA profiles might be used to derive forward and backward looking projections. Below we show how some other indicators in the spirit of the demographic dependency rate can be derived using the NTA age profiles to give them economic meaning¹⁵.

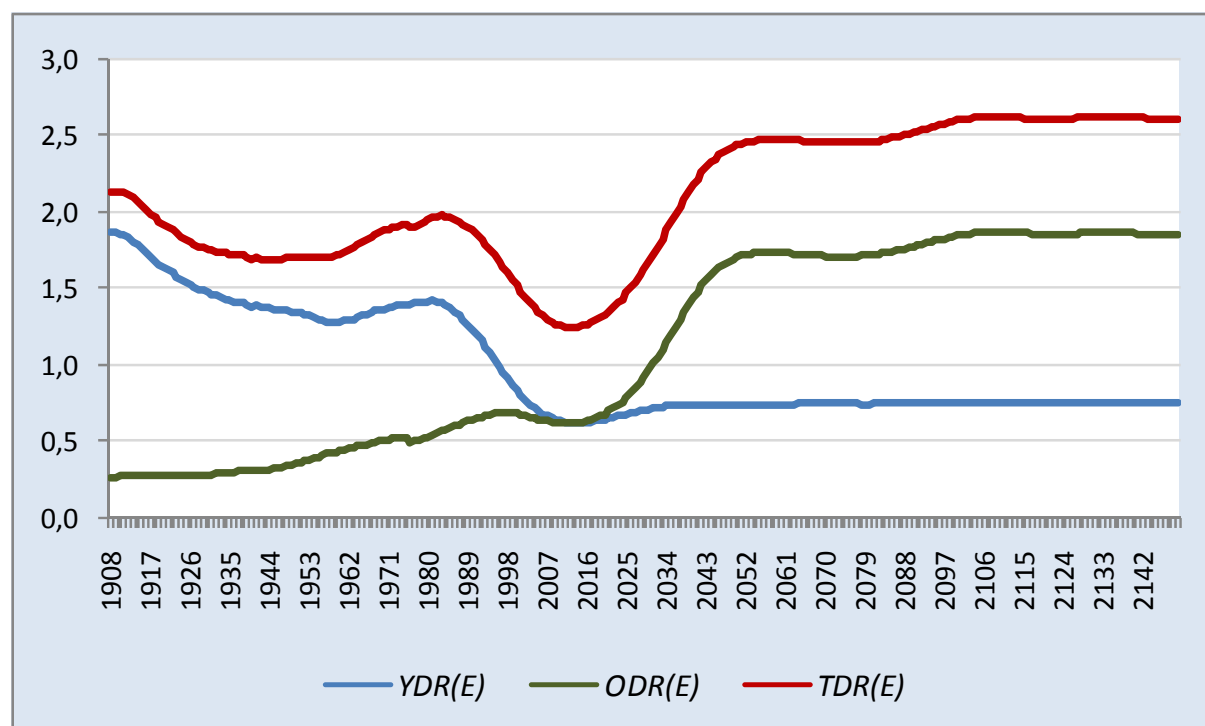
The computation starts from the four NTA *per capita* age profiles shown in Figure I, assuming they remain constant in *per capita* terms though updated by a given productivity rate¹⁶. As mentioned above, this procedure is far from reliable

¹⁵ These indicators are built similarly to the demographic dependency rate, but it should be noted that the assumptions included in economic indicators are far stronger than those included in the strictly demographic indicator.

¹⁶ The productivity up-rating transforms the cross-sectional age profiles into longitudinal profiles. Note that, as long as all profiles are projected using the same rate, the ratios obtained are not affected by the value chosen.

in the case of the ABR profiles, but this is only done in hypothetical terms. It is equivalent to assuming that there is no limit to public or private indebtedness. Then, these *per capita* profiles are combined with the past and future demographic evolution. Once the aggregate profiles have been obtained, we add them up and analyze their relative aggregate evolution. First, starting from the shape of the LCD –again in the year 2000– and assuming it evolves with productivity, we can obtain an *economic dependency rate* (TDR^E) as the aggregate value of positive LCD (the deficit, registered for ages 0-25 and 59 and more), divided by the aggregate value of negative LCD (the surplus, for ages 26-58). It is obtained for the whole economy, as well as for the young (YDR^E) and the old dependants (ODR^E). As Figure 5 shows, not surprisingly, the time path of these ratios is quite similar to the one followed by their demographic counterparts in Figure 2, although some differences remain. Interestingly, while the demographic TDR ratio rises by 96% from 2007 to 2055, the TDR^E rises by 100% from 2013 to 2059.

Figure 5
EVOLUTION OF ECONOMIC DEPENDENCY RATES (1908-2150)

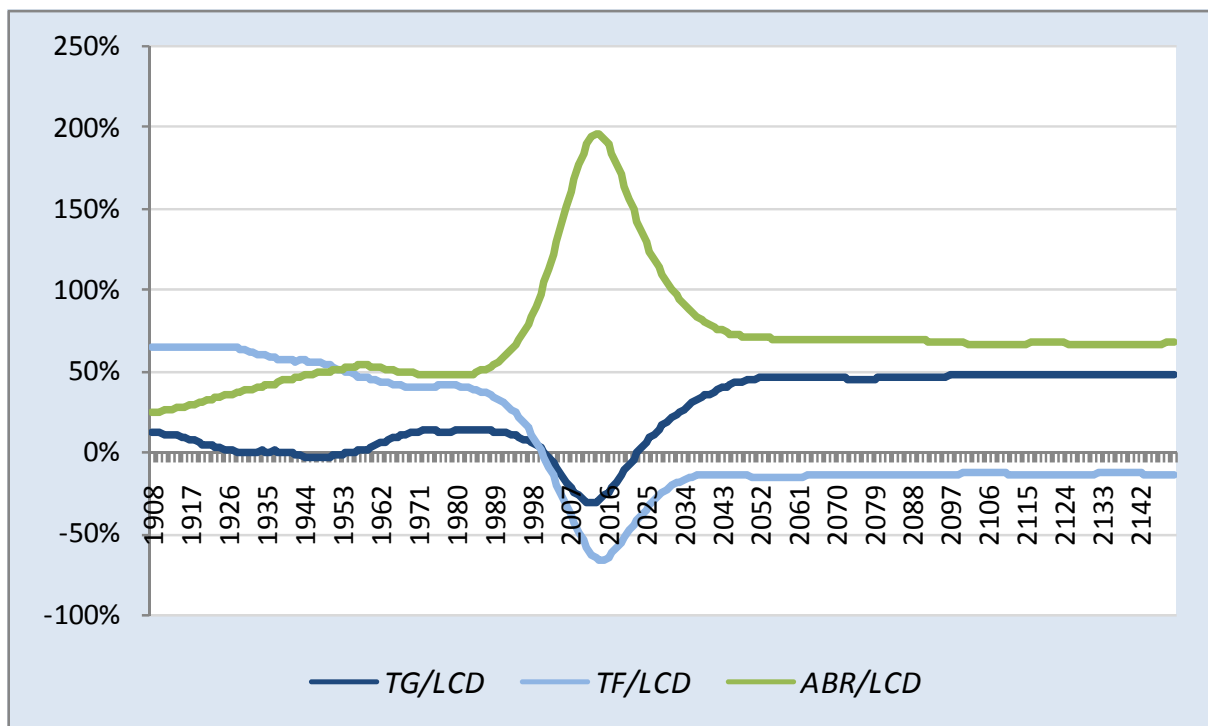


Source: Own elaboration.

Going a step forward, one can analyze how the share of LCD financed by each of the available age reallocations evolves with demographic changes. If one applies the same projection method used above to the NTA profiles for TG, TF and ABR, one can observe the evolution of the so-called *share of family transfers* (TF/LCD), *share of public transfers* (TG/LCD) and *share of asset-based reallocations* (ABR/LCD) on financing the aggregate LCD. In order to interpret these

indicators, it is important to note that only their value in 2000 is true and feasible, while the rest are projected, their feasibility being conditional on the evolution of the stock of capital and wealth. Figure 6 shows their evolution over time due to demographic change. As seen above, in 2000 the share of family transfers in LCD is near zero. The same happens with public transfers, so that more than 100% – 100.53% – is financed through asset-based reallocations. Then, assuming that the present fiscal and economic age flows remain constant, we move across the past and future considering changes in the population age structure. Going back to the past, the young dependency ratio increases. Hence, given that the young dependants are mainly sustained by TF (as shown by the *per capita* profiles in Figure 1), the share of TF in LCD also increases. This pattern continues until 2015 when TF/LCD increases due to the slight fertility recovery and to the increase in the elderly – who give positive transfers to the rest of the family. From 2040 on it stays stable at a negative value around 13-15%.

Figure 6
EVOLUTION OF THE SHARE OF TG, TF AND ABR IN LCD (1908-2150)



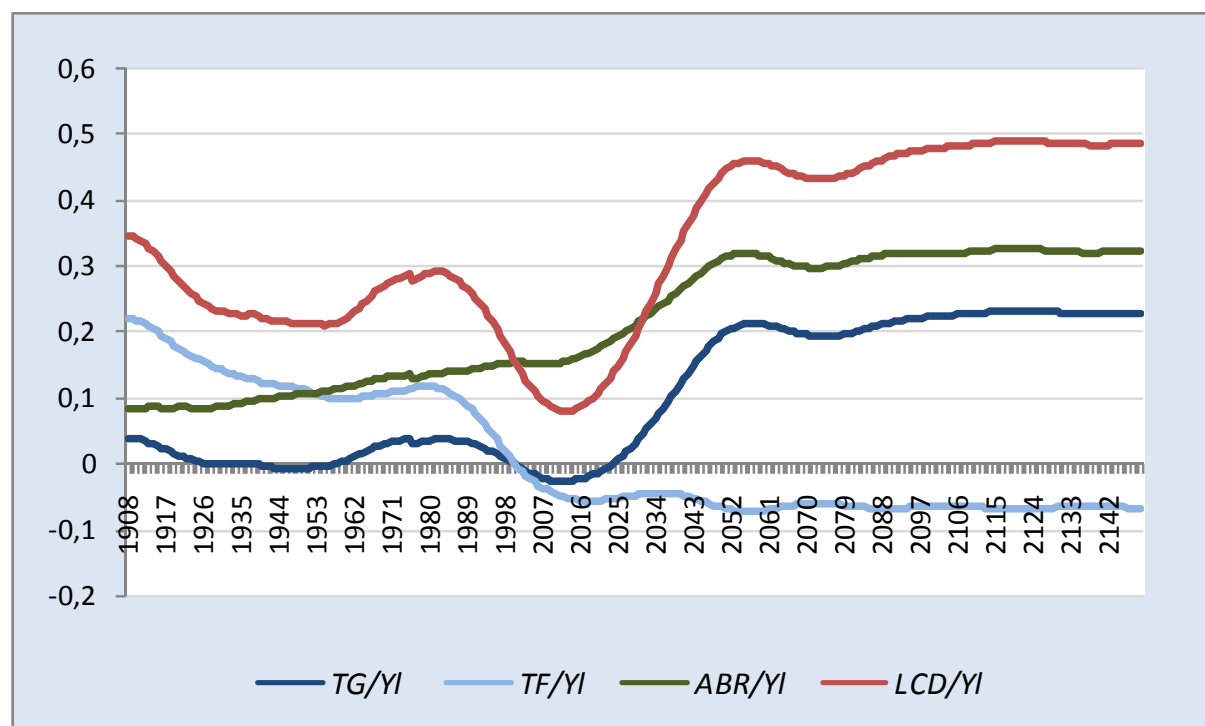
Source: Own elaboration.

The pattern is quite different for TG. Before 2000 there is not a clear pattern. On the contrary, when moving from 2000 to the future, the opposite happens: the ODR is increasing and, given that it is mainly financed by TG (see Figure 1), the share of TG in LCD increases sharply until the baby boom generations end their retirement period, stabilizing at a higher level. The latter is due to the higher life expectancy of baby boomers and the lower fertility fixed in the final

stable population. The share of ABR simply closes the gap between LCD and the other financing sources explaining the huge increase, which is far from being feasible. Clearly, a thorough analysis of the feasible evolution of the four NTA profiles requires a general equilibrium framework. The development of the stock of NTA would also complement the analysis, but this is still work in progress in the project work plan¹⁷.

Finally, to complete the picture shown, we can still construct a set of sustainability indicators, in line with the Generational Accounting (GA) tradition. By dividing equation [4] by the aggregate value of labour income (Y_l), we relate the total LCD and its components to the total labour income –or payment capacity. In this way a measure of the *economic sustainability* is obtained on the left-hand side (LCD/Y_l). Then, using the right-hand side, this indicator is split into three components. First, we obtain a *public sustainability* indicator by relating aggregate public net transfers to labour income (TG/Y_l), similar to the sustainability indicators obtained in GA. Its value starts from 0.03% in 2000 (Figure 7). In the past, the effects of demographic evolution never led this figure to be far from 3%, but this is not so in the future due to the demographic transition. A golden period brings it down to -2.47% in 2012– while the baby boomers are working –and then it rises to 21.34% in 2058– during their retirement.

Figure 7
EVOLUTION OF ECONOMIC SUSTAINABILITY INDICATORS
FOR SPAIN (1908-2150)



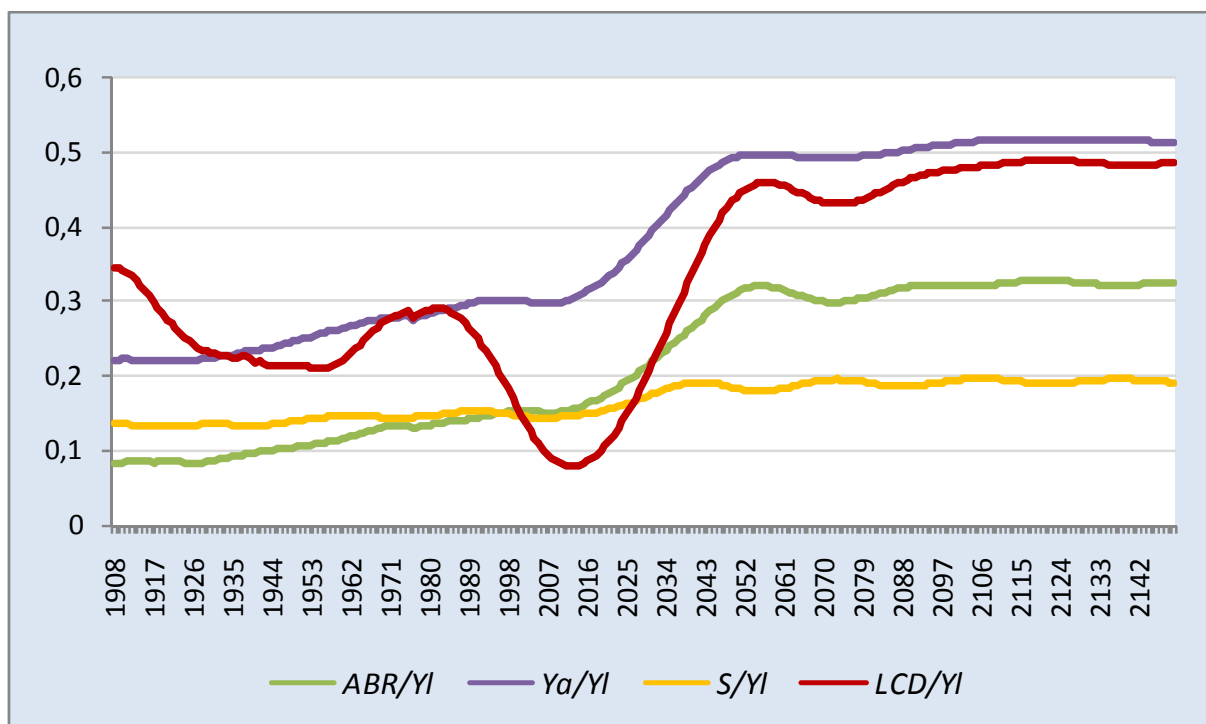
Source: Own elaboration.

¹⁷ See <http://www.ntaccounts.org> for details on the state of the project.

Second and very interesting, an indicator for the private side of the economy is obtained, the *sustainability of private transfers*, which relates the total amount of private transfers to the total aggregate value of labour income (TF/Y_l). Extrapolating the age structure of family transfers in 2000 forward in the future and backward in the past (Figure 7), one can see how the weight of net family transfers would go down during the XX century and the first quarter of the XXI, stabilizing around 2025 at a negative value of around 5%.

Finally, the other indicator for private sustainability –the evolution of the ABR in relation to Y_l – gives a measure of the resulting need for private resources during the retirement of the baby boom. Given the tendencies observed for TG and TF, the need for resources is sharply increasing, even before 2000, and becomes clearly unfeasible from 2020 on. Figure 8 completes this picture by reproducing the total economic dependency rate and those affecting the asset-based reallocations. Clearly, the evolution of the saving rate (S/Y_l) can give us a measure of the room left to the second demographic dividend. Nevertheless, the trends shown in Figure 8 do not seem to give great perspectives. The increase in the saving rate due to the saving of the baby boomers is moderate so that the ABR needed is hypothetically covered by the increase in asset income (Y_a) due to the projection of this NTA profile with productivity. Serving as an illustration, the latter path is by no means unfeasible.

Figure 8
EVOLUTION OF THE ABR AGGREGATES (1908-2150)



Source: Own elaboration.

4. CONCLUDING REMARKS

In this paper, first the NTA results for Spain for year 2000 are presented. In particular, we conclude that the life cycle deficit (LCD) in *per capita* terms is negative (indicating a surplus of labour income overconsumption) while individuals are between ages 26 and 58, while it is positive (deficit) when they are younger or older. Furthermore, we obtain the share of LCD financed through the three possibilities of age reallocations (public transfers, private transfers and asset-based reallocations). These shares are very small for public transfers and family transfers, with the result that more than 100% of the aggregate LCD is financed through asset-based reallocations.

Second, the consumption and labour income NTA age profiles are used, as in the NTA tradition, to illustrate the evolution of the first demographic dividend. We obtain the conclusion that it is especially strong during the period 1982-2013, reflecting the fact that the demographic dependency rate between 1970 and 2010 is the lowest of both the past and present centuries. This is explained by the continuously declining fertility in this period, and the baby boomers entering the labour force. This temporary positive effect of the demographic transition is often forgotten, although it would have given a substantial margin for policy responses.

Third, the NTA *per capita* profiles are combined with population data, in the GA tradition, to derive several economic sustainability indicators and to analyze their hypothetical evolution during the demographic transition. As a first step, an *economic dependency ratio* is defined, as the ratio between the total positive LCD (deficit) and the total negative LCD (surplus). Interestingly, this economy indicator varies slightly more than the strictly demographic one. While the total demographic dependency ratio rises by 96% from 2007 to 2055, the economic dependency rises by 100% from 2013 to 2059.

Fourth, the projected evolution of the way in which the LCD is financed by age reallocations during the demographic transition is obtained. We start from the 2000 situation where ABR finance more than 100% of LCD, covering the small negative balance between TG and TF. Then, the mere changes in the age population structure imply that from 2000 on, the share of TG financing LCD falls from near zero to -30.95% in 2010, and then increases sharply to 46.42% in 2059. In the case of TF, its participation in LCD decreases strongly in the period 1980-2015, becoming negative in 2000, around the middle of the fertility period of the baby boomers. Then it recovers slightly to stabilize at a negative amount around 2040. The extra resources needed during the ageing of the baby boomers from 2020 to 2050 are hypothetically raised from ABR, which must rise sharply to close the increasing financing needs.

Finally, our economic sustainability analysis is complemented by indicators of fiscal and private sustainability. Summarizing, the huge increase in the public



unsustainability during the ageing of the baby boomers is not compensated by the small decrease in the unsustainability of private transfers. Hence, there is an increasing need for ABR, which seems far from being feasible. Definite conclusions on the extent of the second demographic dividend in Spain require a general equilibrium analysis, but the indicators derived for the sustainability of public and private transfers illustrate the small margin left for policy responses. Given their transparency, those indicators can be obtained and compared in international terms. Hence, they could contribute to meet the need for sustainability indicators raised by the so-called Stiglitz commission.

Clearly the indicators proposed and the age profiles from which they are derived, can give way to policy conclusions. It is often forgotten that the threats the ageing process pose on the welfare state have been preceded by decades of relatively numerous working age cohorts –the first demographic dividend– that can give the economy some margin to overcome the ageing process, by implementing policies that foster a second demographic dividend. Operationally, there is no doubt that policy responses are limited once this period has gone and ageing starts hitting the economy. But, in any case, it is worth analyzing this issue and the NTA estimates provide a precious basis for this. Unfortunately, our results indicate that Spain has probably wasted the first demographic dividend and does not have much room left for the second one. Nevertheless, definite conclusions can only be properly derived by developing the stock NTA and through a general equilibrium contrast, considering the changes in factor prices during the demographic transition.

APPENDIX: NATIONAL TRANSFER ACCOUNTS PROFILES FOR SPAIN 2000

Below we detail the data used to estimate the NTA age profiles for Spain in the year 2000, according to:

$$\text{LCD} = C - Y_l = \text{TG} + \text{TF} + \text{ABR} \quad [\text{A.1}]$$

With LCD being the life cycle deficit, defined as the difference between the consumption (C) and the labour income (Y_l). At the same time, LCD must match the sum of the three possible age reallocations of income, i.e. public transfers (TG), private transfers (TF) and the asset-based reallocations (ABR). Equation [A.1] holds both for the whole economy and for each age cohort. The different data sources are also detailed in Table A.1¹⁸.

Table A.1

DATA SOURCES USED IN NATIONAL TRANSFERS ACCOUNTS AGE PROFILES

| Age profiles | Data source |
|---------------------------------|--|
| Lifecycle deficit (LCD) | |
| Private consumption | |
| Private health consumption (CF) | INE: ECPF, 2000 |
| Private education (CFH) | INE: ECPF, 2000 |
| Private housing (CFR) | INE: ECPF, 2000 |
| Other private consumption (CFX) | INE: ECPF, 2000 |
| Public consumption | |
| Public health consumption (CG) | MSC: Estadística del Gasto Sanitario Público, 2002 MSC: Encuesta Nacional de Salud, 1997 |
| Public education (CGH) | MEC: Estadística de Enseñanzas no Universitarias MEC: Estadística del Gasto Público en Educación INE: Estadística de la Enseñanza Superior en España |
| Other public consumption (CGX) | <i>Per capita</i> |

¹⁸ For a first approximation to these estimates, see the chapter devoted to Spain in Lee, R. and A. Mason, eds. (2010) by the same authors (Patxot *et al.*, 2010). In that case the whole ABR profile was obtained as a residual while here asset income is obtained from micro profiles and only savings are obtained as a residual. Some other novelties of this version are the corresponding details in the aggregates and the closing of the accounts. Some other changes are mentioned in the following.



| Age profiles | Data source |
|--|--|
| Labour Income (YL) | Eurostat: EU Household Panel, 2000 |
| Self-employed (YLS) | Eurostat: EU Household Panel, 2000 |
| Earnings (YLE) | Eurostat: EU Household Panel, 2000 |
| Public transfers (outflows) | |
| Social Security contributions | Eurostat: EU Household Panel, 2000 |
| Personal income tax | Eurostat: EU Household Panel, 1998 |
| Capital tax | Eurostat: EU Household Panel, 2000 |
| Value-added tax (VAT) | INE: ECPF, 2000 |
| Property tax | INE: ECPF, 2000 |
| Excise taxes (except tobacco) | INE: ECPF, 2000 |
| Excise tax on tobacco | INE: ECPF, 2000 |
| Public transfers (inflows) | |
| Contributory pensions (retirement, disability, widowhood, survivors) | MTAS: Informe Estadístico del INSS, 2000 |
| Non-contributory pensions (retirement, disability); unemployment and temporary disability benefits | MTAS: Anuario de Estadísticas Laborales y Asuntos Sociales, 2000 |
| Social Security family benefits | MTAS: Informe Estadístico del INSS, 2000 |
| Health benefits (hospital and primary care, pharmaceuticals) | MSC: Encuesta Nacional de Salud, 1997 |
| Education expenditure | MEC: Estadística de Enseñanzas no Universitarias. MEC: Estadística del Gasto Público en Educación. INE: Estadística de la Enseñanza Superior en España |
| Long-term care | CIS: Encuesta sobre la soledad de las personas mayores, 1998 |
| Private transfers | |
| Interhousehold transfers (inflows) | Eurostat: EU Household Panel, 2000 |
| Interhousehold transfers (outflows) | INE: ECPF, 2000 |
| Intrahousehold transfers (in/outflows) | Eurostat: EU Household Panel, 2000. INE: ECPF, 2000 |
| Asset Based Reallocations | |
| Asset income profiles | Eurostat: EU Household Panel, 2000 |
| Interest profiles | Eurostat: EU Household Panel, 2000 |

Source: Own elaboration.

a) Consumption (C)

Total consumption is divided between public and private, both categories being further broken down into various parts depending on data availability.

Private consumption

Age profiles have been estimated for expenditure on health, education, housing and other consumption¹⁹. In all cases, the database used was a household budget survey (ECPF 2000)²⁰.

Information about private consumption of health care in ECPF includes out-of-pocket expenditure on specialist doctors, hospitals and medicines. However, in Spain private health insurance is quite usual. It was therefore necessary to include the insurance premiums as part of private health expenditure. Information in the survey is reported by household, and was allocated by age using a simple regression analysis²¹.

Information about private education expenditure available in ECPF is not very complete. Only tuition, fees and tutoring expenses are included. Books and school supplies are only registered as bookstore expenditure. Thus, families with students enrolled in public schools do not report any private education expenditure. Furthermore, there is no information about school enrolment before age 16. In order to allocate education consumption to household members who are at school, the official enrolment rate among people younger than 16 years within households was used. Once this was done, a regression among students and non-students was performed, allocating expenditure only among those people that were between 4 and 26 years old. The results turned out to be quite erratic, but this could be due to the lack of information about expenditure of public school students and to the enrolment rates in private schools.

The age profile of private housing expenditure was also obtained from information in ECPF on imputed rent for owner-occupied housing. The equivalence scale proposed by NTA to allocate the household expenditure by age was applied.

Finally, the category “other private consumption” groups together the remaining private consumption categories. Those items only consumed by adults, such as alcoholic drinks and tobacco, are separated and imputed only to adults in the household²². For the rest of the items, the equivalence scale proposed by the NTA methodology is used.

¹⁹ The latter includes the estimated consumption flow of owner-occupied housing, while the actual rent paid is considered as other private consumption following NTA methodology.

²⁰ Encuesta Continua de Presupuestos Familiares.

²¹ All profiles were smoothed using R with a 0.01 span.

²² In Spain in 2000, beer and tobacco is legally consumed from 16 years old. We therefore divided household consumption on these items by all household members older than 16 years. Other alcoholic drinks were divided per capita among household members older than 18 years.



Public consumption

Public consumption is broken down into three main categories: health and long-term care, education and other public expenses. Information on public health consumption is further disaggregated into four items. Hospital utilization and specialist assistance, primary healthcare and pharmaceutical products, represent more than 90% of total health expenditure. The rest is due to general services and other general expenditure. The Ministry of Health and Consumption (MSC) provides information about this expenditure, but not by age. The age allocation was made following Ahn *et al.* (2003). In particular, hospital care expenditure is allocated by age combining the estimated cost of the different Diagnostic Related Groups (DRG) and the entry rates by age and sex with those processes. Although the estimated cost of DRG only represents 50% of total public health expenditure, the profile based on entry rates is used to allocate the other expenditure categories as well. The other two categories, pharmaceutical expenditure and primary healthcare, are retrieved from a health survey – the *Encuesta Nacional de Salud* (ENS) carried out by the Ministry of Health (MSC) for 1997. The information given by this survey is rather limited as it only asks individuals if they use this kind of services, omitting any information on the number of units/visits or their cost. Nevertheless, this information allows the total expenditure on pharmaceuticals and on primary healthcare to be imputed by age²³. The long-term care age profile was obtained following Costa and Patxot (2004) and Comas-Herrera *et al.* (2006). Both dependency rates and service utilization rates were estimated by age and gender from CIS (1998). This information, together with the cost of each type of service, allows an age profile to be obtained for long-term care expenditure. The services considered were residential care, home care and day care.

Regarding educational public expenditure, age allocation was carried out using information provided by the Ministry of Education and Culture (MEC). It provides data on public expenditure in public and private schools by level of education, on the number of students enrolled by school type (private, state-subsidized private and public and also on the cost per student enrolled at university. Using these data, first the public cost per student enrolled in public and in semi-private schools, including universities, was calculated. Second, the age profile of public consumption in education was obtained by multiplying this cost by the number of students, and then dividing by the total population in each age group.

Finally, the aggregate public consumption not allocated by age in the abovementioned categories was divided among the total population to calculate the simple *per capita* amount of “other public consumption”.

²³ As information from MSC is reported by 5-year age groups, we smoothed data using span of 0.01, excluding expenditure from newborns that should be clearly higher.

b) Labour income (Y_i)

There is no reliable information about individual income in the ECPF²⁴. To find this information, the 2000 wave of the European Union Household Panel (PHOGHE) was used. This survey has information about all kinds of income on an individual and household level, although it does not have any information about consumption. Following NTA methodology, labour income is broken down into earnings –for salaried workers– and self-employed income. Earnings declared by individuals working as employees were extracted directly from the survey, calculating the mean by age. For self-employed income, NTA methodology recommends using –both in the aggregate value and in micro profile– 2/3 of declared self-employed earnings, as it is assumed that 1/3 of these earnings are due to capital, and not to labour income. As Figure A.1 shows, the earnings profile rises quite quickly and peaks at 42 years old. Self-employment income starts later and rises very slowly with age, having its peak at 58. It is also important to remark that the share of self-employment income in total labour income is quite high for Spain compared with other European countries. It represents 17% of the total labour income, and is usually less than 10% in northern and central European countries.

c) Net public transfers (TG)

Inflows: public transfers received by individuals

Public transfers can be in kind or in cash. The former show the same age profile as public consumption in education, health and other public consumption, as explained above. The latter are broken down into several items, following Abío *et al.* (2005). In Spain there are different kinds of social benefit, some of them contributory and others non-contributory. Among the contributory social security benefits, there are all the Social Security benefits – retirement, disability, survivors, family and maternity - and unemployment benefits. Profiles of average pension receipts by age are directly available from administrative data (MTAS, 2000) for the main categories (retirement, permanent disability and survivors). Similarly, data provided by INEM (2002) on average monthly gross unemployment income by age are used to obtain unemployment benefit profiles. Regarding maternity benefits, given the absence of information by age, the imputation procedure relies on observed age-specific fertility rates²⁵. Similarly, as direct evidence on sickness benefits is unavailable, transfers are assigned using age-related data on industrial accidents during the working day and the average period of discharge reported by MTAS (2002). Finally, child benefits group together both contributory and non-

²⁴ As explained above, ECPF has no reliable information on income. There is only a variable reporting total household labour income that seems to be strongly underreported.

²⁵ We follow the standard NTA assumption. Alternatively, one could consider newborns as the ultimate beneficiaries.



contributory payments and are imputed using the total amount given to those below and above 18 years old – the latter relating to handicapped children. Concerning other non-contributory transfers, we considered the number of beneficiaries by age, the monthly uniform insurance amount for each type of benefit taken from MTAS (2002) and the underlying population structure, to derive age-profiles for non-contributory old age and disability pensions²⁶.

Retirement benefits are clearly the most important (Figure A.1), being received by people over 55 years, but especially over 65. Survivor's pensions are the second source of public transfers for people over 60. Unemployment and disability benefits are received by working age individuals. Other types of public benefits, such as non-contributory pensions, family aids or maternity benefits have little importance in the Spanish system.

Outflows: Public taxes paid by individuals

The control aggregates are in the aggregate values from National Accounts published by the INE. The age profiles are extracted either from ECPF or PHOGUE, as explained below.

Regarding Valued Added Tax, the allocation procedure was based on the above-described consumption profiles extracted from ECPF. In particular, those items with both an identifiable separate aggregate and a micro-based age profile were separated. This was possible for excise taxes (tobacco, beer, other alcoholic drinks and oil).

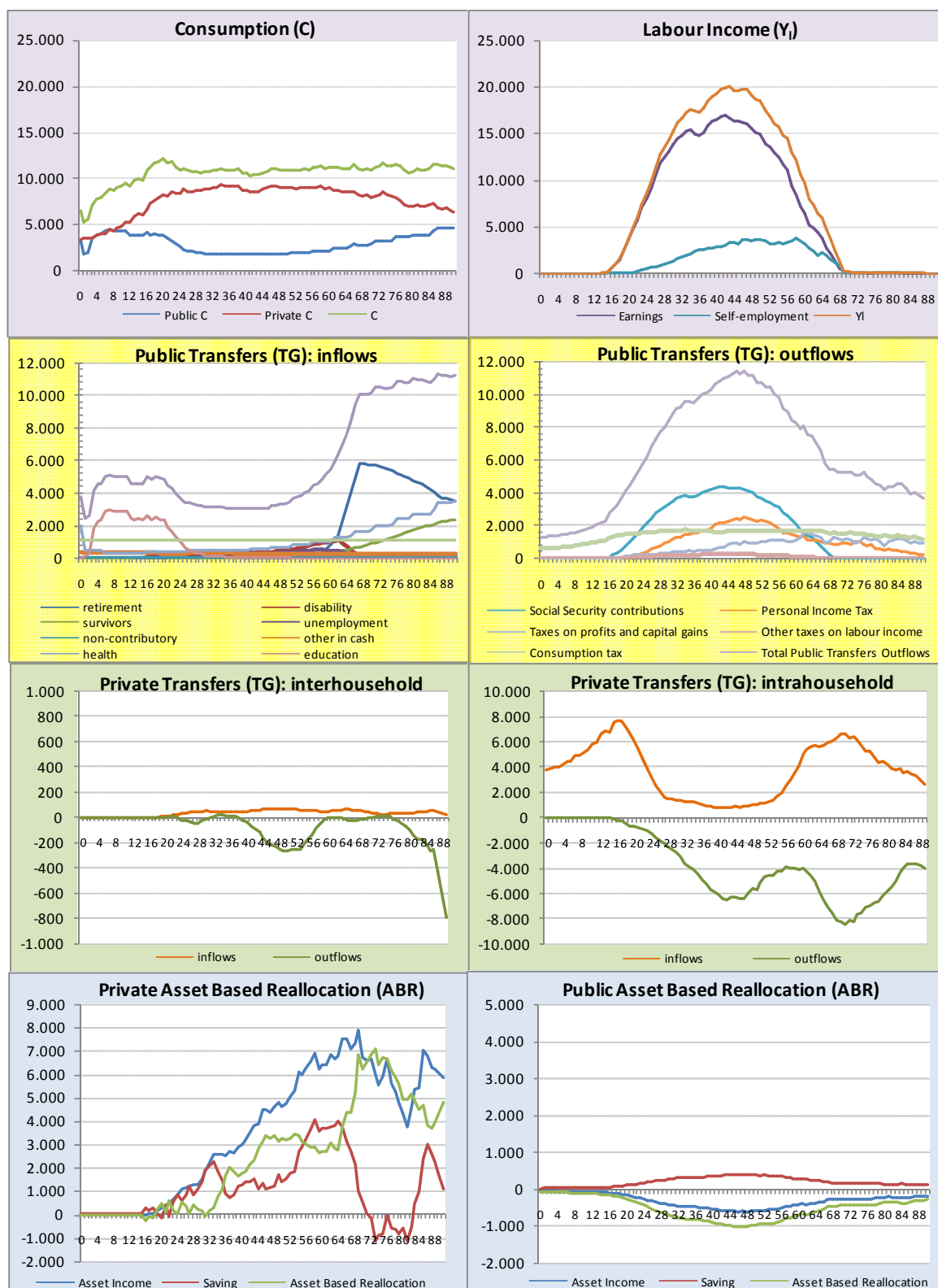
The personal income tax profiles were obtained following Abío *et al.* (2005) aimed at reproducing the 1998 individual personal income tax return using data from PHOGUE. First, net wage earnings, as well as pension and unemployment benefits (also taxed as personal labour income in Spain) were converted into gross terms by considering the respective income retention and the corresponding worker social security contribution rates. Second, disposable income was determined by application of the appropriate allowable expenses. Third, adding up disposable income from different sources, the total tax liability for each taxpayer was inferred from the tax rate schedule. The tax finally paid was derived after accounting for tax allowances related to rent, healthcare, dependent relatives and children, housing and mortgage interest (all imputed to the head of the household) and labour earnings.

The rest of taxes were derived from some of the other profiles described. Social Contributions were obtained using the labour income age profile, given that the contribution rate is almost proportional – except for those affected by the upper and lower thresholds. For the other taxes and transfers we used age profiles of labour income, consumption or asset income, depending on where taxes are imposed. For the rest of the world transfers, we calculated the net transfers, and applied the total taxpayers' profiles.

²⁶ Again, as information is reported by 5-year age groups, data are smoothed.

As expected, tax profiles (Figure A.1) are concentrated especially at working ages, when individuals contribute to the social security system and start having assets and labour income.

Figure A.1
NATIONAL TRANSFER ACCOUNTS AGE PROFILES



Source: Own elaboration.



d) Net private transfers (TF)

Private transfers are decomposed between those occurring within (intrahousehold) and between (interhousehold) households. According to NTA standards, interhousehold transfers were estimated first, as they are necessary to obtain intrahousehold transfers. For this it is necessary to turn to the two main surveys referred to above, as information on inflows is only available in PHOGUE while information on outflows is only available in ECPF.

Regarding intrahousehold transfers, data availability constrains their estimation for Spain to a greater extent. According to standard NTA methodology, it is crucial to have a single survey providing both income and consumption data, but this is not the Spanish case in 2000. Hence, it is necessary to derive an estimation procedure to start from a survey containing all the information needed. Specifically, consumption information from ECPF and income information from PHOGUE are combined, the PHOGUE being the reference survey²⁷.

The imputation procedure consists of two steps. First, the average *per capita* profiles by age groups of consumption and public transfer outflows (taxes paid), not recorded in the PHOGUE database, are imputed to each household member. The average income by age groups and the total cash transfer inflows are also imputed in the same way to each member, although this information already exists in the database. The aim of this latter imputation is to use the ratio between the average income and public transfers and the real ones as a household-specific scaling factor. Second, consumption and taxes paid are revaluated using the abovementioned scaling factor. As a result of this procedure, the standard NTA methodology can be applied to obtain the age profile of intrahousehold transfers²⁸.

The estimated age profiles of intrahousehold transfers for Spain show that only children and people younger than 28 are net recipients of family transfers (Figure A.1). The elderly, despite not having labour income, give more transfers to other family members than they receive, especially over age 80. This negative net transfer flow for the elderly can possibly be explained by the fact that elderly household arrangements in Spain present a high share of cohabitation if compared with other countries of Europe.

e) Asset-based reallocations (ABR)

Asset-based reallocations profiles are estimated separately for the public and private sector. As a consequence of the standard NTA assumption that

²⁷ It was also decided to use all variables needed from PHOGUE in order to avoid further distortions. In particular, all income variables and public cash transfer inflows are taken from the micro data set. The alternative would be to use the estimated age profiles, but this could eliminate variability and hence produce unreliable results.

²⁸ A similar process was used in order to impute the average profile of inter-household transfer outflows to Phogue, as information on this item is available only for inflows.

households own public debt, public asset-based flows are assigned to age groups in proportion to each age group's general (non-earmarked) tax payments. Private asset flows must be separated into two components, asset income profiles and savings. The first one is estimated through the property and capital income profiles plus the imputed rent from owner-occupied households and the portion of mixed income of the household sector profiles. In addition, it is important to notice that, in NTA, assets and, therefore, asset income, are assigned to the age group of the household head²⁹. Finally, only private savings remain to be estimated and this is obtained as a residual of all the other components of the National Transfers Accounts equation presented earlier (taking into account Equations [2] and [3] in the text).

²⁹ With respect to Patxot *et al.* (2010) there is a change in the assumption of the household head. It was the eldest in the household, while it is now the main income earner. Additionally, for coherence with the assumption that savings are done by the household head, a small amount of savings obtained for the youngest are adjusted to zero and redistributed to adults.

REFERENCES

- ABÍO, G.; BERENGUER, E.; BONIN, H.; GIL, J. and PATXOT, C. (2003): "Is the Deficit under Control? A Generational Accounting Perspective on Fiscal Policy and Labour Market Trends in Spain," *Investigaciones Económicas*, n.º 27(2), pp. 309-341.
- ABÍO, G.; BERENGUER, E.; BONIN, H.; BORGMAN, H.; GIL, J. and PATXOT, C. (2005): *Contabilidad Generacional en España*, Estudios de Hacienda Pública, Instituto de Estudios Fiscales, Madrid.
- AHN, N.; ALONSO-MESSEGUER, J. and HERCE, J.A. (2003): *Gasto Sanitario y Envejecimiento de la Población en España*, Documento de Trabajo, n.º 7, FBBVA.
- AUERBACH, A.J. (1997): "Quantifying the Current U.S. Fiscal Imbalance", *National Tax Journal*, n.º 50, pp. 387-398.
- AUERBACH, A. and KOTLIKOFF, L. (1987): *Dynamic Fiscal Policy*. Cambridge University Press, Cambridge.
- (1999): "The Methodology of Generational Accounting," in *Generational Accounting around the World*, ed. by A. Auerbach, L. Kotlikoff and W. Leibfritz, pp. 31-41. University of Chicago Press.
- AUERBACH, A.; GOKHALE, J. and KOTLIKOFF, L. (1991): "Generational Accounting: A Meaningful Alternative to Deficit Accounting," *Tax Policy and the Economy*, n.º 5, pp. 55-110.
- (1992): "Generational Accounting: a New Approach to Understanding the Effects of Fiscal Policy", *Scandinavian Journal of Economics*, n.º 94, pp. 303-318.
- (1994): *Generational Accounting: A Meaningful Way to Evaluate Fiscal Policy*, *Journal of Economic Perspectives*, n.º 8(4), pp. 73-94.
- (1995): "Restoring Generational Balance in US Fiscal Policy: What will it Take?", *Federal Reserve Bank Cleveland Economic Review*, n.º 31, pp. 2-12.
- AUERBACH, A.; GOKHALE, J.; KOTLIKOFF, L. and STEIGUM, E. (1993): *Generational Accounting in Norway: Is Norway Overconsuming its Petroleum Wealth*, Working Paper, n.º 9305, Federal Reserve Bank of Cleveland.
- AUERBACH, A.J.; KOTLIKOFF, L. and LEIBFRITZ, W. (1999): *Generational Accounting around the World*, University of Chicago Press.
- AUERBACH, A. and OREOPOULOS, P. (2000): "The Fiscal Effect of U.S. Immigration: A Generational Accounting Perspective," *Tax Policy and the Economy*, n.º 14, pp. 123-156.

- BAEKGAARD, H. (2002): *Micro-Macro Linkage and the Alignment of Transition Processes: Some Issues, Techniques and Examples*. Online Technical Paper - TP25.
- BLOOM & WILLIAMSON (1998): "Demographic Transitions and Economic Miracles in Asia". *World Bank Economic Review*, n.º 12 (3), pp. 419-55.
- BOLL, S.; RAFFELHÜSCHEN, B. and WALLISER, J. (1994): "Social Security and Intergenerational Redistribution: A Generational Accounting Perspective", *Public Choice*, n.º 81, pp. 79-100.
- BONIN, H. (2001): *Generational Accounting: Theory and Application*, Berlin: Springer Verlag.
- BONIN, H. and PATXOT, C. (2005): "La Contabilidad Generacional como una Herramienta de Análisis de la Sostenibilidad Fiscal: Panorama de la Metodología", in Abío et al (2005), *Contabilidad Generacional en España*, Instituto de Estudios Fiscales, Madrid.
- BONIN, H.; GIL, J. and PATXOT, C. (2001): "Beyond the Toledo Agreement: the Intergenerational Impact of Spanish Pension Reform", *Spanish Economic Review*, n.º 3, pp. 111-130.
- BÖRSTINGHAUS, V. and HIRTE, G. (2001): "Generational Accounting versus Computable General Equilibrium", *FinanzArchiv*, n.º 58 (3), pp. 227-243.
- COMAS-HERRERA, A.; WITTENBERG, R.; GORI, C.; COSTA-FONT, J.; DI MAIO, A.; PATXOT, C.; PICKARD, L.; POZZI, A. and ROTHGANG, H. (2006): "Future Long-Term Care Expenditure in Germany, Spain, Italy and the United Kingdom", *Ageing and Society*, n.º 26(2), pp. 285-302.
- COSTA, J. and PATXOT, C. (2004): "The Intergenerational Impact of Long-term Care Financing Alternatives in Spain", *Geneva Papers on Risk and Insurance Theory, Issues and practice*, Vol 29, n.º 4. October 2004.
- CUTLER, D.; POTERBA, J.; SHEINER, L. and SUMMERS, L. (1990): "An Ageing Society: Opportunity or Challenge", *Brookings Papers on Economic Activity*, n.º 1, pp. 1-74.
- DEKKERS, G.; BUSLEI, H.; COZZOLINO, M.; DESMET, R.; GEYER, J.; HOFMANN, D.; RAITANO, M.; STEINER, V.; TANDA, P.; TEDESCHI, S. and VERSCHUEREN, F. (2009): What are the consequences of the AWG-projections for the adequacy of social security pensions? An application of the dynamic micro simulation model MIDAS for Belgium, Italy and Germany. Enepri Research Report, n.º 65, AIM WP4, January 2009
- DIAMOND, P. (1965): "National Debt in a Neoclassical Growth Model," *American Economic Review*, n.º 55, pp. 1126-1150.
- DIAMOND, P.A. (1994): "Generational Accounts and Generational Balance: an Assessment", *National Tax Journal*, n.º 49, pp. 597-607.
- EUROPEAN COMMISSION (1999): *Generational Accounting in Europe*, European Economy Reports and Studies 1999/6, Brussels.

- EUROSTAT (2006): *Population Projections (2004-2050)*.
- (2008): *Population Projections (2008-2060)*.
- FEHR, H. and KOTLIKOFF, L. (1996): “Generational Accounting in General Equilibrium”, *FinanzArchiv*, n.º 53, pp. 1-27.
- INE (2005): *Proyecciones de Población para España (Base Censo 1991)*.
- JIMENO, J.F.; ROJAS, J. and PUENTE, S. (2006): *Modelling the Impact of Aging in Social Security Expenditure*. Documentos Ocasionales 0601, Banco de España
- LEE, R. and MASON, A. (eds) (2010): *Population Aging and the Generational Economy: A Global Perspective*. Under contract to Edward Elgar. (Forthcoming).
- (2004): *Macroeconomic Demography of Intergenerational Transfers*, National Institute on Aging.
- (2006): "Back to Basics: What is the Demographic Dividend," *Finance and Development*, n.º 43(3), pp. 16-17.
- LEE, R.; MASON, A. and MILLER, T. (2003): "Saving, Wealth, and the Transition from Transfers to Individual Responsibility: the Cases of Taiwan and the United States", *The Scandinavian Journal of Economics*, n.º 105, pp. 339-357.
- LEE, R. and EDWARDS, R. (2002): "The Fiscal Effects of Population Aging in the US: Assessing the Uncertainties," in James M. Poterba, ed., *Tax Policy and Economy*, NBER: MIT Press, 2002, pp. 141-181.
- MASON, A. (2005): *Demographic Transition and Demographic Dividends in Developed and Developing Countries*. United Nations Expert Group Meeting on Social and Economic Implications of Changing Population Age Structure, Mexico. UN/POP/PD/2005/2.
- MASON, A. and LEE, R. (2006): "Reform and Support System for the Elderly in Developing Countries: capturing the second demographic dividend." *Genus* LXII(2), pp. 11-35.
- MASON, A.; LEE, R.; TUNG, A.; LAI, M. and MILLER, T. (2006): *Population Aging and Intergenerational Transfers: Introducing Age Into National Accounts*. NBER, working paper 12770.
- PATXOT, C.; RENTERÍA, E.; SÁNCHEZ-ROMERO, M. and SOUTO, G. (2010): “How Intergenerational Transfers Finance Lifecycle Deficit in Spain” in. Lee, R. and A. Mason, eds. *Population Aging and the Generational Economy: A Global Perspective*. Under contract to Edward Elgar. (Forthcoming).

SÍNTESIS

PRINCIPALES IMPLICACIONES DE POLÍTICA ECONÓMICA

A menudo se olvida que la amenaza que supone el envejecimiento demográfico para el estado del bienestar tiene, o ha tenido, algunos aspectos positivos. En primer lugar, el envejecimiento es precedido por décadas del llamado *primer dividendo demográfico*: un aumento del ratio entre productores y consumidores que aumenta la renta per cápita y genera un margen para realizar posibles reformas que eviten los efectos negativos en el futuro. En segundo lugar, si la política de transferencias generacionales lo permite, este primer dividendo demográfico de carácter claramente transitorio puede preceder a un *segundo dividendo demográfico*: una mayor acumulación de capital, que puede tener, además, efectos permanentes.

Este artículo persigue dos objetivos fundamentales. El primer objetivo es presentar las primeras estimaciones de cuentas de transferencias nacionales (NTA) para España en el año 2000. Este método parte de los agregados de contabilidad nacional y los imputa por edades con el fin de estimar los flujos de recursos que se dan entre los distintos grupos de edad y por las distintas vías disponibles: mercado, familia y sector público. El trabajo se enmarca en un proyecto de alcance internacional cuyo objetivo es obtener estimaciones plenamente comparables para países con distintos grados de desarrollo económico y social.

Los resultados permiten obtener, a cada edad, el llamado déficit de ciclo vital (LCD) –el exceso del consumo total, suma del consumo público y privado, respecto a la renta laboral. En el caso español, para el año 2000 y en términos per cápita, se observa que esa magnitud es positiva excepto entre las edades 26 y 58 en que la renta laboral excede las necesidades de consumo. Asimismo, los perfiles por edad del consumo y la renta laboral pueden emplearse para medir el peso del primer dividendo demográfico. En el caso español, a lo largo del siglo XX y de cara al futuro, se obtiene que es especialmente relevante en el período 1982-2013, reflejando el hecho de que es el período de menor dependencia demográfica del siglo XX y previsiblemente del siglo XXI. Por el contrario, a partir de 2020 la dependencia demográfica comenzará a aumentar como resultado de la continua caída de la fecundidad y la entrada de la generación de la explosión demográfica en el mercado de trabajo.

La metodología NTA permite, también, desagregar las fuentes de financiación del LCD en tres tipos de reasignaciones de recursos entre edades: reasignaciones basadas en activos (ABR) –que, a su vez resultan de restarle el ahorro a la renta de los activos–, transferencias públicas (TG) y transferencias privadas (TF) –si bien estas últimas no constan explícitamente en la contabilidad nacional se estiman a partir de micro datos. En términos agregados, para la España del año 2000 se obtienen un valor reducido y negativo tanto de las transferencias públicas como privadas, de modo que más del 100% del déficit de ciclo vital es financiado con reasignaciones basadas en activos.

En términos operativos, está claro que el margen de actuación política de cara al envejecimiento es reducido una vez pasado el primer dividendo demográfico. Pero, en cualquier caso es necesario analizarlo y las estimaciones de NTA ofrecen un punto de partida valioso al respecto. Lamentablemente nuestros resultados indican que España ha desperdiciado buena parte del primer dividendo demográfico y no queda mucho margen de actuación para fomentar el segundo. Con el fin de profundizar en esta cuestión, el segundo objetivo del trabajo es explotar las complementariedades que se dan entre NTA y las proyecciones al futuro realizadas en contabilidad generacional (GA). En particular se extienden los indicadores de sostenibilidad futura de GA –basados únicamente en datos de transferencias públicas– incluyendo las reasignaciones que se dan vía mercado y familia provenientes de las estimaciones de NTA. Así, en primer lugar se obtiene un ratio de dependencia económica, como el ratio entre el agregado de LCD positivo (déficit) y LCD negativo (superávit) y se obtiene un aumento del mismo entre 2007 y 2055 del 96%. Asimismo se obtiene la proyección al futuro, teniendo en cuenta la evolución demográfica, de las reasignaciones entre edades observadas en 2000. Partiendo de que en 2000 más del 100% del LCD se financia con ABR, siendo la fracción de TG y TF negativa y reducida, la mera evolución demográfica esperada en el futuro provoca una reducción de la fracción financiada vía TG. Ésta cae de un valor cercano al cero, al -30.95% en 2010, para desde ahí aumentar bruscamente alcanzando un +46,42% en 2059. En el caso de las transferencias familiares (TF) cuyo peso en el LCD venía decreciendo desde 1980 para llegar a cero alrededor de 2000 –en medio del período fértil de la generación del baby boom–, se observa una leve recuperación hasta que se estabiliza en un valor negativo alrededor de 2040. Los recursos extras necesarios durante el envejecimiento de los baby boomers se lograrían hipotéticamente aumentando el ABR, que para ello deben crecer drásticamente.

Finalmente cabe complementar los indicadores de sostenibilidad fiscal –similares a los obtenidos en GA– con indicadores de sostenibilidad privada, poniendo los agregados obtenidos en relación a la renta laboral agregada. Los resultados muestran que el enorme aumento del indicador de insostenibilidad de la política pública no se compensa por la leve reducción del indicador de sostenibilidad de las transferencias privadas. Por tanto, se produce una necesidad creciente de ABR, que no parece factible. Es necesario recurrir a un análisis de equilibrio general y la obtención de la cuenta de stock de NTA para sacar conclusiones definitivas respecto a la importancia del segundo dividendo demográfico en España. En cualquier caso, los indicadores obtenidos y los perfiles por edades de los que provienen, ofrecen una información muy valiosa e ilustran el margen que queda para la actuación política. Además, dada su transparencia, estos indicadores pueden obtenerse de modo asequible y comparable internacionalmente y son, por ello, candidatos claros a la necesidad de indicadores de sostenibilidad reivindicada por la llamada Comisión Stiglitz.

NORMAS DE PUBLICACIÓN DE PAPELES DE TRABAJO DEL INSTITUTO DE ESTUDIOS FISCALES

Esta colección de *Papeles de Trabajo* tiene como objetivo ofrecer un vehículo de expresión a todas aquellas personas interesadas en los temas de Economía Pública. Las normas para la presentación y selección de originales son las siguientes:

1. Todos los originales que se presenten estarán sometidos a evaluación y podrán ser directamente aceptados para su publicación, aceptados sujetos a revisión, o rechazados.
2. Los trabajos deberán enviarse por duplicado a la Subdirección de Estudios Tributarios. Instituto de Estudios Fiscales. Avda. Cardenal Herrera Oria, 378. 28035 Madrid.
3. La extensión máxima de texto escrito, incluidos apéndices y referencias bibliográficas será de 7000 palabras.
4. Los originales deberán presentarse mecanografiados a doble espacio. En la primera página deberá aparecer el título del trabajo, el nombre del autor(es) y la institución a la que pertenece, así como su dirección postal y electrónica. Además, en la primera página aparecerá también un abstract de no más de 125 palabras, los códigos JEL y las palabras clave.
5. Los epígrafes irán numerados secuencialmente siguiendo la numeración arábica. Las notas al texto irán numeradas correlativamente y aparecerán al pie de la correspondiente página. Las fórmulas matemáticas se numerarán secuencialmente ajustadas al margen derecho de las mismas. La bibliografía aparecerá al final del trabajo, bajo la inscripción "Referencias" por orden alfabético de autores y, en cada una, ajustándose al siguiente orden: autor(es), año de publicación (distinguiendo a, b, c si hay varias correspondientes al mismo autor(es) y año), título del artículo o libro, título de la revista en cursiva, número de la revista y páginas.
6. En caso de que aparezcan tablas y gráficos, éstos podrán incorporarse directamente al texto o, alternativamente, presentarse todos juntos y debidamente numerados al final del trabajo, antes de la bibliografía.
7. En cualquier caso, se deberá adjuntar un disquete con el trabajo en formato word. Siempre que el documento presente tablas y/o gráficos, éstos deberán aparecer en ficheros independientes. Asimismo, en caso de que los gráficos procedan de tablas creadas en excel, estas deberán incorporarse en el disquete debidamente identificadas.

Junto al original del Papel de Trabajo se entregará también un resumen de un máximo de dos folios que contenga las principales implicaciones de política económica que se deriven de la investigación realizada.

PUBLISHING GUIDELINES OF WORKING PAPERS AT THE INSTITUTE FOR FISCAL STUDIES

This serie of *Papeles de Trabajo* (working papers) aims to provide those having an interest in Public Economics with a vehicle to publicize their ideas. The rules governing submission and selection of papers are the following:

1. The manuscripts submitted will all be assessed and may be directly accepted for publication, accepted with subjections for revision or rejected.
2. The papers shall be sent in duplicate to Subdirección General de Estudios Tributarios (The Deputy Direction of Tax Studies), Instituto de Estudios Fiscales (Institute for Fiscal Studies), Avenida del Cardenal Herrera Oria, nº 378, Madrid 28035.
3. The maximum length of the text including appendices and bibliography will be no more than 7000 words.
4. The originals should be double spaced. The first page of the manuscript should contain the following information: (1) the title; (2) the name and the institutional affiliation of the author(s); (3) an abstract of no more than 125 words; (4) JEL codes and keywords; (5) the postal and e-mail address of the corresponding author.
5. Sections will be numbered in sequence with arabic numerals. Footnotes will be numbered correlatively and will appear at the foot of the corresponding page. Mathematical formulae will be numbered on the right margin of the page in sequence. Bibliographical references will appear at the end of the paper under the heading "References" in alphabetical order of authors. Each reference will have to include in this order the following terms of references: author(s), publishing date (with an a, b or c in case there are several references to the same author(s) and year), title of the article or book, name of the journal in italics, number of the issue and pages.
6. If tables and graphs are necessary, they may be included directly in the text or alternatively presented altogether and duly numbered at the end of the paper, before the bibliography.
7. In any case, a floppy disk will be enclosed in Word format. Whenever the document provides tables and/or graphs, they must be contained in separate files. Furthermore, if graphs are drawn from tables within the Excell package, these must be included in the floppy disk and duly identified.

Together with the original copy of the working paper a brief two-page summary highlighting the main policy implications derived from the research is also requested.

ÚLTIMOS PAPELES DE TRABAJO EDITADOS POR EL INSTITUTO DE ESTUDIOS FISCALES

2004

- 1/04 Una propuesta para la regulación de precios en el sector del agua: el caso español.
Autores: M.^a Ángeles García Valiñas y Manuel Antonio Muñoz Pérez.
- 2/04 Eficiencia en educación secundaria e *inputs* no controlables: sensibilidad de los resultados ante modelos alternativos.
Autores: José Manuel Cordero Ferrera, Francisco Pedraja Chaparro y Javier Salinas Jiménez.
- 3/04 Los efectos de la política fiscal sobre el ahorro privado: evidencia para la OCDE.
Autores: Montserrat Ferre Carracedo, Agustín García García y Julián Ramajo Hernández.
- 4/04 ¿Qué ha sucedido con la estabilidad del empleo en España? Un análisis desagregado con datos de la EPA: 1987-2003.
Autores: José María Arranz y Carlos García-Serrano.
- 5/04 La seguridad del empleo en España: evidencia con datos de la EPA (1987-2003).
Autores: José María Arranz y Carlos García-Serrano.
- 6/04 La ley de Wagner: un análisis sintético.
Autor: Manuel Jaén García.
- 7/04 La vivienda y la reforma fiscal de 1998: un ejercicio de simulación.
Autor: Miguel Ángel López García.
- 8/04 Modelo dual de IRPF y equidad: un nuevo enfoque teórico y su aplicación al caso español.
Autor: Fidel Picos Sánchez.
- 9/04 Public expenditure dynamics in Spain: a simplified model of its determinants.
Autores: Manuel Jaén García y Luis Palma Martos.
- 10/04 Simulación sobre los hogares españoles de la reforma del IRPF de 2003. Efectos sobre la oferta laboral, recaudación, distribución y bienestar.
Autores: Juan Manuel Castañer Carrasco, Desiderio Romero Jordán y José Félix Sanz Sanz.
- 11/04 Financiación de las Haciendas regionales españolas y experiencia comparada.
Autor: David Cantarero Prieto.
- 12/04 Multidimensional indices of housing deprivation with application to Spain.
Autores: Luis Ayala y Carolina Navarro.
- 13/04 Multiple occurrence of welfare reciprocity: determinants and policy implications.
Autores: Luis Ayala y Magdalena Rodríguez.
- 14/04 Imposición efectiva sobre las rentas laborales en la reforma del impuesto sobre la renta personal (IRPF) de 2003 en España.
Autoras: María Pazos Morán y Teresa Pérez Barrasa.
- 15/04 Factores determinantes de la distribución personal de la renta: un estudio empírico a partir del PHOGUE.
Autores: Marta Pascual y José María Sarabia.
- 16/04 Política familiar, imposición efectiva e incentivos al trabajo en la reforma de la imposición sobre la renta personal (IRPF) de 2003 en España.
Autoras: María Pazos Morán y Teresa Pérez Barrasa.
- 17/04 Efectos del déficit público: evidencia empírica mediante un modelo de panel dinámico para los países de la Unión Europea.
Autor: César Pérez López.

- 18/04 Inequality, poverty and mobility: Choosing income or consumption as welfare indicators.
Autores: Carlos Gradín, Olga Cantó y Coral del Río.
- 19/04 Tendencias internacionales en la financiación del gasto sanitario.
Autora: Rosa María Urbanos Garrido.
- 20/04 El ejercicio de la capacidad normativa de las CCAA en los tributos cedidos: una primera evaluación a través de los tipos impositivos efectivos en el IRPF.
Autores: José María Durán y Alejandro Esteller.
- 21/04 Explaining. budgetary indiscipline: evidence from spanish municipalities.
Autores: Ignacio Lago-Peñas y Santiago Lago-Peñas.
- 22/04 Local governments' asymmetric reactions to grants: looking for the reasons.
Autor: Santiago Lago-Peñas.
- 23/04 Un pacto de estabilidad para el control del endeudamiento autonómico.
Autor: Roberto Fernández Llera
- 24/04 Una medida de la calidad del producto de la atención primaria aplicable a los análisis DEA de eficiencia.
Autora: Mariola Pinillos García.
- 25/04 Distribución de la renta, crecimiento y política fiscal.
Autor: Miguel Ángel Galindo Martín.
- 26/04 Políticas de inspección óptimas y cumplimiento fiscal.
Autores: Inés Macho Stadler y David Pérez Castrillo.
- 27/04 ¿Por qué ahorra la gente en planes de pensiones individuales?
Autores: Félix Domínguez Barrero y Julio López-Laborda.
- 28/04 La reforma del Impuesto sobre Actividades Económicas: una valoración con microdatos de la ciudad de Zaragoza.
Autores: Julio López-Laborda, M.^a Carmen Trueba Cortés y Anabel Zárata Marco.
- 29/04 Is an inequality-neutral flat tax reform really neutral?
Autores: Juan Prieto-Rodríguez, Juan Gabriel Rodríguez y Rafael Salas.
- 30/04 El equilibrio presupuestario: las restricciones sobre el déficit.
Autora: Belén Fernández Castro.

2005

- 1/05 Efectividad de la política de cooperación en innovación: evidencia empírica española.
Autores: Joost Heijs, Liliana Herrera, Mikel Buesa, Javier Sáiz Briones y Patricia Valadez.
- 2/05 A probabilistic nonparametric estimator.
Autores: Juan Gabriel Rodríguez y Rafael Salas.
- 3/05 Efectos redistributivos del sistema de pensiones de la seguridad social y factores determinantes de la elección de la edad de jubilación. Un análisis por comunidades autónomas.
Autores: Alfonso Utrilla de la Hoz y Yolanda Ubago Martínez.
- 4/05 La relación entre los niveles de precios y los niveles de renta y productividad en los países de la zona euro: implicaciones de la convergencia real sobre los diferenciales de inflación.
Autora: Ana R. Martínez Cañete.
- 5/05 La Reforma de la Regulación en el contexto autonómico.
Autor: Jaime Vallés Giménez.

- 6/05 Desigualdad y bienestar en la distribución intraterritorial de la renta, 1973-2000.
Autores: Luis Ayala Cañón, Antonio Jurado Málaga y Francisco Pedraja Chaparro.
- 7/05 Precios inmobiliarios, renta y tipos de interés en España.
Autor: Miguel Ángel López García.
- 8/05 Un análisis con microdatos de la normativa de control del endeudamiento local.
Autores: Jaime Vallés Giménez, Pedro Pascual Arzoz y Fermín Cabasés Hita.
- 9/05 Macroeconomics effects of an indirect taxation reform under imperfect competition.
Autor: Ramón J. Torregrosa.
- 10/05 Análisis de incidencia del gasto público en educación superior: nuevas aproximaciones.
Autora: María Gil Izquierdo.
- 11/05 Feminización de la pobreza: un análisis dinámico.
Autora: María Martínez Izquierdo.
- 12/05 Efectos del impuesto sobre las ventas minoristas de determinados hidrocarburos en la economía extremeña: un análisis mediante modelos de equilibrio general aplicado.
Autores: Francisco Javier de Miguel Vélez, Manuel Alejandro Cardenete Flores y Jesús Pérez Mayo.
- 13/05 La tarifa lineal de Pareto en el contexto de la reforma del IRPF.
Autores: Luis José Imedio Olmedo, Encarnación Macarena Parrado Gallardo y María Dolores Sarrión Gavilán.
- 14/05 Modelling tax decentralisation and regional growth.
Autores: Ramiro Gil-Serrate y Julio López-Laborda.
- 15/05 Interactions inequality-polarization: characterization results.
Autores: Juan Prieto-Rodríguez, Juan Gabriel Rodríguez y Rafael Salas.
- 16/05 Políticas de competencia impositiva y crecimiento: el caso irlandés.
Autores: Santiago Díaz de Sarralde, Carlos Garcimartín y Luis Rivas.
- 17/05 Optimal provision of public *inputs* in a second-best scenario.
Autores: Diego Martínez López y A. Jesús Sánchez Fuentes.
- 18/05 Nuevas estimaciones del pleno empleo de las regiones españolas.
Autores: Javier Capó Parrilla y Francisco Gómez García.
- 19/05 US deficit sustainability revisited: a multiple structural change approach.
Autores: Óscar Bajo-Rubio, Carmen Díaz-Roldán y Vicente Esteve.
- 20/05 Aproximación a los pesos de calidad de vida de los “Años de Vida Ajustados por Calidad” mediante el estado de salud autopercibido.
Autores: Anna García-Altés, Jaime Pinilla y Salvador Peiró.
- 21/05 Redistribución y progresividad en el Impuesto sobre Sucesiones y Donaciones: una aplicación al caso de Aragón.
Autor: Miguel Ángel Barberán Lahuerta.
- 22/05 Estimación de los rendimientos y la depreciación del capital humano para las regiones del sur de España.
Autora: Inés P. Murillo.
- 23/05 El doble dividendo de la imposición ambiental. Una puesta al día.
Autor: Miguel Enrique Rodríguez Méndez.
- 24/05 Testing for long-run purchasing power parity in the post bretton woods era: evidence from old and new tests.
Autor: Julián Ramajo Hernández y Montserrat Ferré Cariacedo.

- 25/05 Análisis de los factores determinantes de las desigualdades internacionales en las emisiones de CO₂ *per cápita* aplicando el enfoque distributivo: una metodología de descomposición por factores de Kaya.
Autores: Juan Antonio Duro Moreno y Emilio Padilla Rosa.
- 26/05 Planificación fiscal con el impuesto dual sobre la renta.
Autores: Félix Domínguez Barrero y Julio López Laborda.
- 27/05 El coste recaudatorio de las reducciones por aportaciones a planes de pensiones y las deducciones por inversión en vivienda en el IRPF 2002.
Autores: Carmen Marcos García, Alfredo Moreno Sáez, Teresa Pérez Barrasa y César Pérez López.
- 28/05 La muestra de declarantes IEF-AEAT 2002 y la simulación de reformas fiscales: descripción y aplicación práctica.
Autores: Alfredo Moreno, Fidel Picos, Santiago Díaz de Sarralde, María Antiquera y Lucía Torrejón.

2006

- 1/06 Capital gains taxation and progressivity.
Autor: Julio López Laborda.
- 2/06 Pigou's dividend versus Ramsey's dividend in the double dividend literature.
Autores: Eduardo L. Giménez y Miguel Rodríguez.
- 3/06 Assessing tax reforms. Critical comments and proposal: the level and distance effects.
Autores: Santiago Díaz de Sarralde Míguez y Jesús Ruiz-Huerta Carbonell.
- 4/06 Incidencia y tipos efectivos del impuesto sobre el patrimonio e impuesto sobre sucesiones y donaciones.
Autora: Laura de Pablos Escobar.
- 5/06 Descentralización fiscal y crecimiento económico en las regiones españolas.
Autores: Patricio Pérez González y David Cantarero Prieto.
- 6/06 Efectos de la corrupción sobre la productividad: un estudio empírico para los países de la OCDE.
Autores: Javier Salinas Jiménez y M.^a del Mar Salinas Jiménez.
- 7/06 Simulación de las implicaciones del equilibrio presupuestario sobre la política de inversión de las comunidades autónomas.
Autores: Jaime Vallés Giménez y Anabel Zárate Marco.
- 8/06 The composition of public spending and the nationalization of party systems in western Europe.
Autores: Ignacio Lago-Peñas y Santiago Lago-Peñas.
- 9/06 Factores explicativos de la actividad reguladora de las Comunidades Autónomas (1989-2001).
Autores: Julio López Laborda y Jaime Vallés Giménez.
- 10/06 Disciplina crediticia de las Comunidades Autónomas.
Autor: Roberto Fernández Llera.
- 11/06 Are the tax mix and the fiscal pressure converging in the European Union?
Autor: Francisco J. Delgado Rivero.
- 12/06 Redistribución, inequidad vertical y horizontal en el impuesto sobre la renta de las personas físicas (1982-1998).
Autora: Irene Perrote.

- 13/06 Análisis económico del rendimiento en la prueba de conocimientos y destrezas imprescindibles de la Comunidad de Madrid.
Autores: David Trillo del Pozo, Marta Pérez Garrido y José Marcos Crespo.
- 14/06 Análisis de los procesos privatizadores de empresas públicas en el ámbito internacional. Motivaciones: moda política versus necesidad económica.
Autores: Almudena Guarnido Rueda, Manuel Jaén García e Ignacio Amate Fortes.
- 15/06 Privatización y liberalización del sector telefónico español.
Autores: Almudena Guarnido Rueda, Manuel Jaén García e Ignacio Amate Fortes.
- 16/06 Un análisis taxonómico de las políticas para PYME en Europa: objetivos, instrumentos y empresas beneficiarias.
Autor: Antonio Fonfría Mesa.
- 17/06 Modelo de red de cooperación en los parques tecnológicos: un estudio comparado.
Autora: Beatriz González Vázquez.
- 18/06 Explorando la demanda de carburantes de los hogares españoles: un análisis de sensibilidad.
Autores: Santiago Álvarez García, Marta Jorge García-Inés y Desiderio Romero Jordán.
- 19/06 Cross-country income mobility comparisons under panel attrition: the relevance of weighting schemes.
Autores: Luis Ayala, Carolina Navarro y Mercedes Sastre.
- 20/06 Financiación Autonómica: algunos escenarios de reforma de los espacios fiscales.
Autores: Ana Herrero Alcalde, Santiago Díaz de Sarralde, Javier Loscos Fernández, María Antiquera y José Manuel Tránchez.
- 21/06 Child nutrition and multiple equilibria in the human capital transition function.
Autores: Berta Rivera, Luis Currais y Paolo Rungo.
- 22/06 Actitudes de los españoles hacia la hacienda pública.
Autor: José Luis Sáez Lozano.
- 23/06 Progresividad y redistribución a través del IRPF español: un análisis de bienestar social para el periodo 1982-1998.
Autores: Jorge Onrubia Fernández, María del Carmen Rodado Ruiz, Santiago Díaz de Sarralde y César Pérez López.
- 24/06 Análisis descriptivo del gasto sanitario español: evolución, desglose, comparativa internacional y relación con la renta.
Autor: Manuel García Goñi.
- 25/06 El tratamiento de las fuentes de renta en el IRPF y su influencia en la desigualdad y la redistribución.
Autores: Luis Ayala Cañón, Jorge Onrubia Fernández y María del Carmen Rodado Ruiz.
- 26/06 La reforma del IRPF de 2007: una evaluación de sus efectos.
Autores: Santiago Díaz de Sarralde Míguez, Fidel Picos Sánchez, Alfredo Moreno Sáez, Lucía Torrejón Sanz y María Antiquera Pérez.
- 27/06 Proyección del cuadro macroeconómico y de las cuentas de los sectores institucionales mediante un modelo de equilibrio.
Autores: Ana María Abad, Ángel Cuevas y Enrique M. Quilis.
- 28/06 Análisis de la propuesta del tesoro Británico “Fiscal Stabilisation and EMU” y de sus implicaciones para la política económica en la Unión Europea.
Autor: Juan E. Castañeda Fernández.

- 29/06 Choosing to be different (or not): personal income taxes at the subnational level in Canada and Spain.
Autores: Violeta Ruiz Almendral y François Vaillancourt.
- 30/06 A projection model of the contributory pension expenditure of the Spanish social security system: 2004-2050.
Autores: Joan Gil, Miguel Ángel Lopez-García, Jorge Onrubia, Concepció Patxot y Guadalupe Souto.

2007

- 1/07 Efectos macroeconómicos de las políticas fiscales en la UE.
Autores: Oriol Roca Sagalés y Alfredo M. Pereira.
- 2/07 Deficit sustainability and inflation in EMU: an analysis from the fiscal theory of the price level.
Autores: Óscar Bajo-Rubio, Carmen Díaz-Roldán y Vicente Esteve.
- 3/07 Contraste empírico del modelo monetario de tipos de cambio: cointegración y ajuste no lineal.
Autor: Julián Ramajo Hernández.
- 4/07 An empirical analysis of capital taxation: equity vs. tax compliance.
Autores: José M.^a Durán Cabré y Alejandro Esteller Moré.
- 5/07 Education and health in the OECD: a macroeconomic approach.
Autoras: Cecilia Albert y María A. Davia.
- 6/07 Understanding the effect of education on health across European countries.
Autoras: Cecilia Albert y María A. Davia.
- 7/07 Polarization, fractionalization and conflict.
Autores: Joan Esteban y Debraj Ray.
- 8/07 Immigration in a segmented labor market: the effects on welfare.
Autor: Javier Vázquez Grenno.
- 9/07 On the role of public debt in an OLG Model with endogenous labor supply.
Autor: Miguel Ángel López García.
- 10/07 Assessing profitability in rice cultivation using the Policy Matrix Analysis and profit-efficient data.
Autores: Andrés J. Picazo-Tadeo, Ernest Reig y Vicent Estruch.
- 11/07 Equidad y redistribución en el Impuesto sobre Sucesiones y Donaciones: análisis de los efectos de las reformas autonómicas.
Autores: Miguel Ángel Barberán Lahuerta y Marta Melguizo Garde.
- 12/07 Valoración y determinantes del stock de capital salud en la Comunidad Canaria y Cataluña.
Autores: Juan Oliva y Néboa Zozaya.
- 13/07 La nivelación en el marco de la financiación de las Comunidades Autónomas.
Autores: Ana Herrero Alcalde y Jorge Martínez-Vázquez.
- 14/07 El gasto en defensa en los países desarrollados: evolución y factores explicativos.
Autor: Antonio Fonfría Mesa.
- 15/07 Los costes del servicio de abastecimiento de agua. Un análisis necesario para la regulación de precios.
Autores: Ramón Barberán Ortí, Alicia Costa Toda y Alfonso Alegre Val.
- 16/07 Precios, impuestos y compras transfronterizas de carburantes.
Autores: Andrés Leal Marcos, Julio López Laborda y Fernando Rodrigo Saucó.

- 17/07 Análisis de la distribución de las emisiones de CO₂ a nivel internacional mediante la adaptación del concepto y las medidas de polarización.
Autores: Juan Antonio Duro Moreno y Emilio Padilla Rosa.
- 18/07 Foreign direct investment and regional growth: an analysis of the Spanish case.
Autores: Óscar Bajo Rubio, Carmen Díaz Mora y Carmen Díaz Roldán.
- 19/07 Convergence of fiscal pressure in the EU: a time series approach.
Autores: Francisco J. Delgado y María José Presno.
- 20/07 Impuestos y protección medioambiental: preferencias y factores.
Autores: María de los Ángeles García Valiñas y Benno Torgler.
- 21/07 Modelización paramétrica de la distribución personal de la renta en España. Una aproximación a partir de la distribución Beta generalizada de segunda especie.
Autores: Mercedes Prieto Alaiz y Carmelo García Pérez.
- 22/07 Desigualdad y delincuencia: una aplicación para España.
Autores: Rafael Muñoz de Bustillo, Fernando Martín Mayoral y Pablo de Pedraza.
- 23/07 Crecimiento económico, productividad y actividad normativa: el caso de las Comunidades Autónomas.
Autor: Jaime Vallés Giménez.
- 24/07 Descentralización fiscal y tributación ambiental. El caso del agua en España.
Autores: Anabel Zárata Marco, Jaime Vallés Giménez y Carmen Trueba Cortés.
- 25/07 Tributación ambiental en un contexto federal. Una aplicación empírica para los residuos industriales en España.
Autores: Anabel Zárata Marco, Jaime Vallés Giménez y Carmen Trueba Cortés.
- 26/07 Permisos de maternidad, paternidad y parentales en Europa: algunos elementos para el análisis de la situación actual.
Autoras: Carmen Castro García y María Pazos Morán.
- 27/07 ¿Quién soporta las cotizaciones sociales empresariales?. Una panorámica de la literatura empírica.
Autor: Ángel Melguizo Esteso.
- 28/07 Una propuesta de financiación municipal.
Autores: Manuel Esteban Cabrera y José Sánchez Maldonado.
- 29/07 Do R&D programs of different government levels overlap in the European Union.
Autoras: Isabel Busom y Andrea Fernández-Ribas.
- 30/07 Proyecciones de tablas de mortalidad dinámicas de España y sus Comunidades Autónomas.
Autores: Javier Alonso Meseguer y Simón Sosvilla Rivero.
- 2008**
- 1/08 Estudio descriptivo del voto económico en España.
Autores: José Luis Sáez Lozano y Antonio M. Jaime Castillo.
- 2/08 The determinants of tax morale in comparative perspective: evidence from a multilevel analysis.
Autores: Ignacio Lago-Peñas y Santiago Lago-Peñas.
- 3/08 Fiscal decentralization and the quality of government: evidence from panel data.
Autores: Andreas P. Kyriacou y Oriol Roca-Sagalés.
- 4/08 The effects of multinationals on host economies: A CGE approach.
Autores: María C. Latorre, Oscar Bajo-Rubio y Antonio G. Gómez-Plana.

- 5/08 Measuring the effect of spell recurrence on poverty dynamics.
Autores: José María Arranz y Olga Cantó.
- 6/08 Aspectos distributivos de las diferencias salariales por razón de género en España: un análisis por subgrupos poblacionales.
Autores: Carlos Gradín y Coral del Río.
- 7/08 Evaluating the regulator: winners and losers in the regulation of Spanish electricity distribution (1988-2002).
Autores: Leticia Blázquez Gómez y Emili Grifell-Tatjé.
- 8/08 Interacción de la política monetaria y la política fiscal en la UEM: tipos de interés a corto plazo y déficit público.
Autores: Jesús Manuel García Iglesias y Agustín García García.
- 9/08 A selection model of R&D intensity and market structure in Spanish firms.
Autor: Joaquín Artés.
- 10/08 Outsourcing behaviour: the role of sunk costs and firm and industry characteristics.
Autoras: Carmen Díaz Mora y Angela Triguero Cano.
- 11/08 How can the decommodified security ratio assess social protection systems?.
Autor: Georges Menahem.
- 12/08 Pension policies and income security in retirement: a critical assessment of recent reforms in Portugal.
Autora: Maria Clara Murteira.
- 13/08 Do unemployment benefit legislative changes affect job finding? Evidence from the Spanish 1992 UI reform act.
Autores: José M. Arranz, Fernando Muñoz Bullón y Juan Muro.
- 14/08 Migraciones interregionales en España y su relación con algunas políticas públicas.
Autora: María Martínez Torres.
- 15/08 Entradas y salidas de la pobreza en la Unión Europea: factores determinantes.
Autores: Guillermina Martín Reyes, Elena Bárcena Martín, Antonio Fernández Morales y Antonio García Lizana.
- 16/08 Income mobility and economic inequality from a regional perspective.
Autores: Juan Prieto Rodríguez, Juan Gabriel Rodríguez y Rafael Salas.
- 17/08 A note on the use of calendar regressors.
Autor: Leandro Navarro Pablo.
- 18/08 Asimetrías y efectos desbordamiento en la transmisión de la política fiscal en la Unión Europea: evidencia a partir de un enfoque VAR estructural.
Autor: Julián Ramajo.
- 19/08 Institutionalizing uncertainty: the choice of electoral formulas.
Autores: Gonzalo Fernández de Córdoba y Alberto Penadés.
- 20/08 A field experiment to study sex and age discrimination in selection processes for staff recruitment in the Spanish labor market.
Autores: Rocío Albert, Lorenzo Escot, y José A. Fernández-Cornejo.
- 21/08 Descentralización y tamaño del sector público regional en España.
Autor: Patricio Pérez.
- 22/08 Multinationals and foreign direct investment: main theoretical strands and empirical effects.
Autora: María C. Latorre.

- 23/08 Una aproximación no lineal al análisis del impacto de las finanzas públicas en el crecimiento económico de los países de la UE-15, 1965-2007.
Autor: Diego Romero Ávila.
- 24/08 Consolidación y reparto de la base imponible del Impuesto sobre Sociedades entre los Estados Miembros de la Unión Europea: consecuencias para España.
Autores: Félix Domínguez Barrero y Julio López Laborda.
- 25/08 La suficiencia dinámica del modelo de financiación autonómica en España, 2002-2006.
Autores: Catalina Barceló Maimó, María Marquès Caldentey y Joan Rosselló Villalonga.
- 26/08 Ayudas públicas en especie y en efectivo: justificaciones y aspectos metodológicos.
Autores: Laura Piedra Muñoz y Manuel Jaén García.
- 27/08 Las ayudas públicas al alquiler de la vivienda. un análisis empírico para evaluar sus beneficios y costes.
Autores: Laura Piedra Muñoz y Manuel Jaén García.
- 28/08 Decentralization and spatial distribution of regional economic activity: does equalization matter?.
Autores: Santiago Lago-Peñas y Diego Martínez-López.
- 29/08 Childcare costs and Spanish mothers's labour force participation.
Autora: Cristina Borra.
- 30/08 Pro-poor economic growth, inequality and fiscal policy: the case of Spanish regions.
Autores: Luis Ayala y Antonio Jurado.

2009

- 1/09 Does the balance of payments constrain economic growth?. Some evidence for the new EU members.
Autores: Oscar Bajo-Rubio y Carmen Díaz-Roldán.
- 2/09 Imputación a valor de mercado de los rendimientos de la vivienda en Propiedad del IRPF.
Autores: Luis Ayala Cañón, Jorge Onrubia Fernández y María del Carmen Rodado Ruiz.
- 3/09 Income poverty and multidimensional deprivation: lessons from cross-regional analysis.
Autores: Luis Ayala Cañón, Antonio Jurado y Jesús Perez-Mayo.
- 4/09 Reglas fiscales activas: el caso de España (1981-2007).
Autor: Juan E. Castañeda Fernández.
- 5/09 Índices trimestrales de volumen encadenados, ajuste estacional y *Bechmarking*.
Autores: Ana M.^a Abad, Ángel Cuevas y Enrique M. Quilis.
- 6/09 Fiscal decentralization and economic growth in OECD countries: matching spending wit revenue decentralization.
Autores: Norman Gemmell, Richard Kneller e Ismael Sanz.
- 7/09 Una estimación del voto estratégico en las elecciones generales españolas, 2000-2008.
Autores: Enrique García Viñuela y Joaquín Artés.
- 8/09 La tributación del transporte como instrumento frente al cambio climático.
Autor: Miguel Buñuel González
- 9/09 The ins and outs of unemployment and the assimilation of recent immigrants in Spain.
Autores: José I. Silva y Javier Vázquez.
- 10/09 Decomposing the determinants of health care expenditure: the case of Spain.
Autores: David Cantarero Prieto y Santiago Lago-Peña.
- 11/09 La clase beta de medidas de desigualdad.
Autores: Luis José Imedio Olmedo, Elena Bárcena Martín y Encarnación M. Parrado Gallardo.

- 12/09 Right incentives to enhance efficiency in public expenditure.
Autor: Tamón A. Takahashi Iturriaga.
- 13/09 Fiscal decentralization and public sector employment: a cross-country analysis.
Autores: Jorge Martínez-Vázquez y Ming-Hung Yao.
- 14/09 Factores explicativos de los resultados de las Comunidades Autónomas Españolas en PISA 2006.
Autores: José Manuel Cordero Ferrera, Eva Crespo Cebada y Daniel Santín González.
- 15/09 A proposal to empirically evaluate the sensitivity of the speed of convergence in the EU.
Autoras: Sonia de Lucas Santos, Inmaculada Álvarez Ayuso y M.^a Jesús Delgado Rodríguez.
- 16/09 An assessment of the sustainability of current account imbalances in OECD countries.
Autores: Mariam Camarero, Josep Lluís Carrion-i-Silvestre y Cecilio Tamarit.
- 17/09 Tax mimicking among local governments: some evidence from Spanish municipalities.
Autores: Francisco J. Delgado y Matías Mayor-Fernández.
- 18/09 La desigualdad en las intensidades energéticas y la composición de la producción. Un análisis para los países de la OCDE.
Autores: Juan Antonio Duro Moreno, Vicent Alcántara Escolano y Emilio Padilla Rosa.
- 19/09 On the sustainability of government deficits: some long-term evidence for Spain, 1850-2000.
Autores: Oscar Bajo-Rubio, Carmen Díaz-Roldán y Vicente Esteve.
- 20/09 Who bears Social Security taxes? A meta-analysis approach.
Autores: José Manuel González-Paramo and Ángel Melguizo.
- 21/09 Fostering the contributory nature of the Spanish retirement pension system: an arithmetic micro-simulation exercise using the MCVL.
Autores: Ció Patxot, Guadalupe Souto y Jaime Villanueva.
- 22/09 Obtaining lifetime earnings patterns for Spain.
Autores: Ignacio Moral-Arce, Ció Patxot y Guadalupe Souto.
- 23/09 Efectos del gasto militar sobre la rentabilidad de la industria de defensa en España.
Autor: Antonio Fonfría Mesa.
- 24/09 El papel de la igualdad de género en la solución de la crisis económica.
Autora: María Pazos Morán.
- 25/09 Inequality and polarization impact of the European redistribution architecture on the Spanish population: an analysis using microsimulation techniques.
Autores: Xisco Oliver, Luca Piccoli y Amedeo Spadaro.

2010

- 1/10 Fostering delayed retirement in Spain: a micro simulation exercise using the MCVL.
Autores: Ignacio Moral-Arce, Ció Patxot y Guadalupe Souto.
- 2/10 La imposición lineal de las sucesiones y donaciones. Análisis recaudatorio y redistributivo.
Autores: Miguel Ángel Barberán Lahuerta, Julio López Laborda y Marta Melguizo Garde.
- 3/10 Popular support for egalitarian social welfare.
Autores: Rafael Salas y Juan Gabriel Rodríguez.
- 4/10 Equidad y eficiencia en el sistema español de pensiones: una revisión crítica.
Autoras: Diana Alonso San Alberto y María Pazos Morán.

- 5/10 Pérdidas laborales ocasionadas por las enfermedades y problemas de salud en España en el año 2005.
Autor: Juan Oliva.
- 6/10 Combining incrementalism and exogenous factors in analyzing national budgeting: an application to Spain.
Autores: José Caamaño Alegre y Santiago Lago Peñas.
- 7/10 Integrated results for GA and NTA for Spain: some implications for the sustainability of the welfare state.
Autores: Concepció Patxot, Elisenda Rentería, Miguel Romero y Guadalupe Souto