



NTA Mozambique: public and inter household transfers

Belo Horizonte, Brazil
05 – 12th December, 2011

Gilberto Norte
Cassiano Chipembe



Outline

- Objectives
- Demographic background
- LCD
- Structure of Public Transfers and
Structure of Inter household transfer.
- Way forward



Objectives

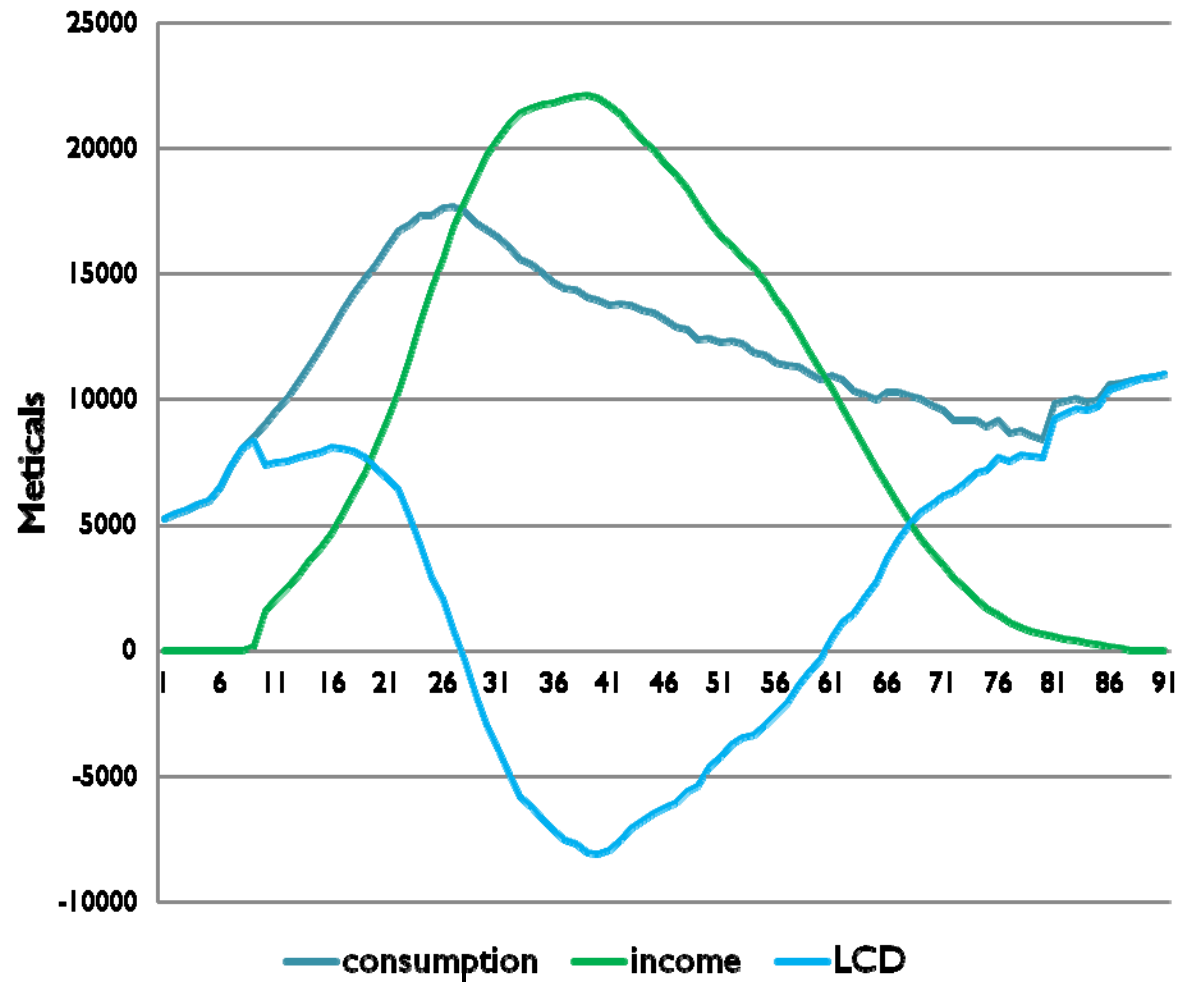
- Show the impact of age structure on Mozambican Economy.
- Understanding the structure of Public and Inter household transfer.

Demographic background

General Socio-demographic Indicators. Mozambique, 2008	
Indicators	2008
Population	21 208 000
size	799,380 km sq
Urban Population (%)	30.4
Rural Population (%)	69.6
Age distribution (%)	
0 -14 years	46.6
15 - 59	48.6
60 +	4.6
Dependency ratio	106
Growth Population rate (%)	2.5
Total Fertility Rate	5.7
Life Expectancy at birth	51.3
Poverty line	54.7

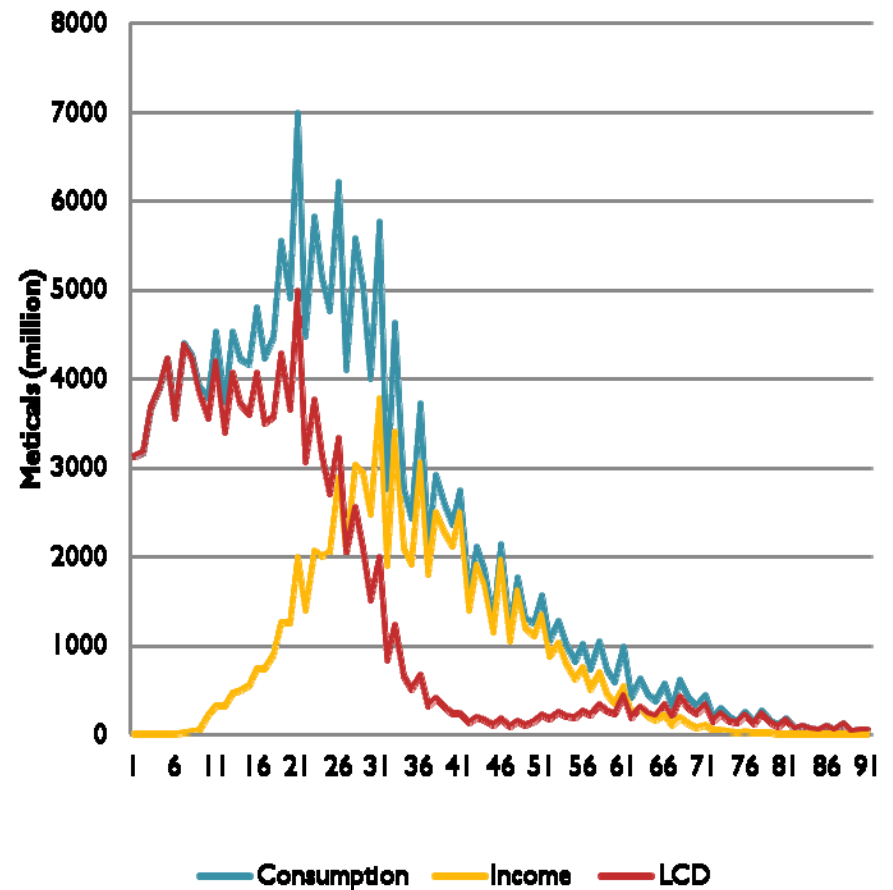
- Individuals between 28 and 58 produce more than they consume.

Consumption, Labour income and LCD – per capita. Mozambique, 2008

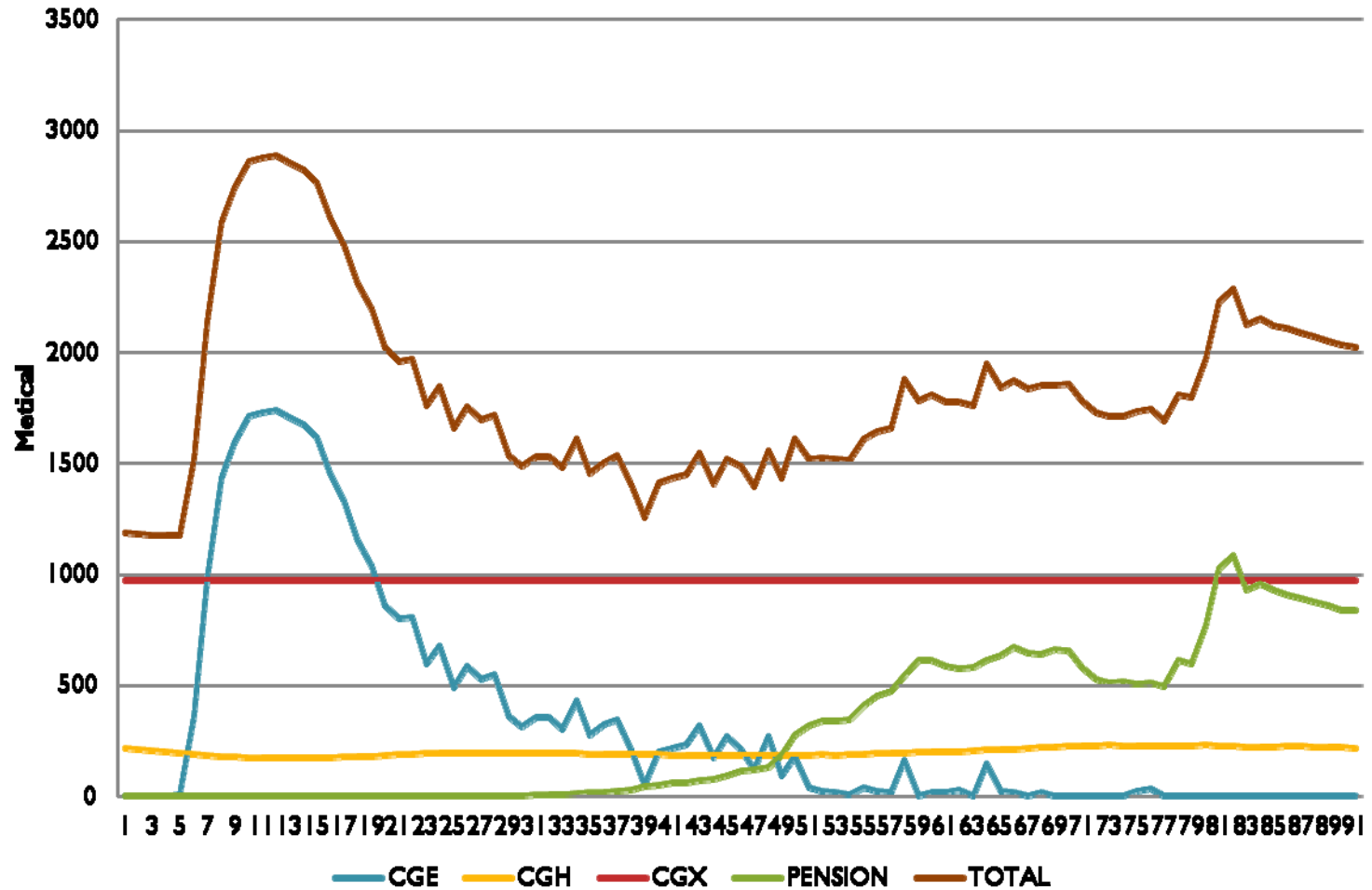


- It is clear that younger people consume more than in older age. What shows the high impact of the population age structure.

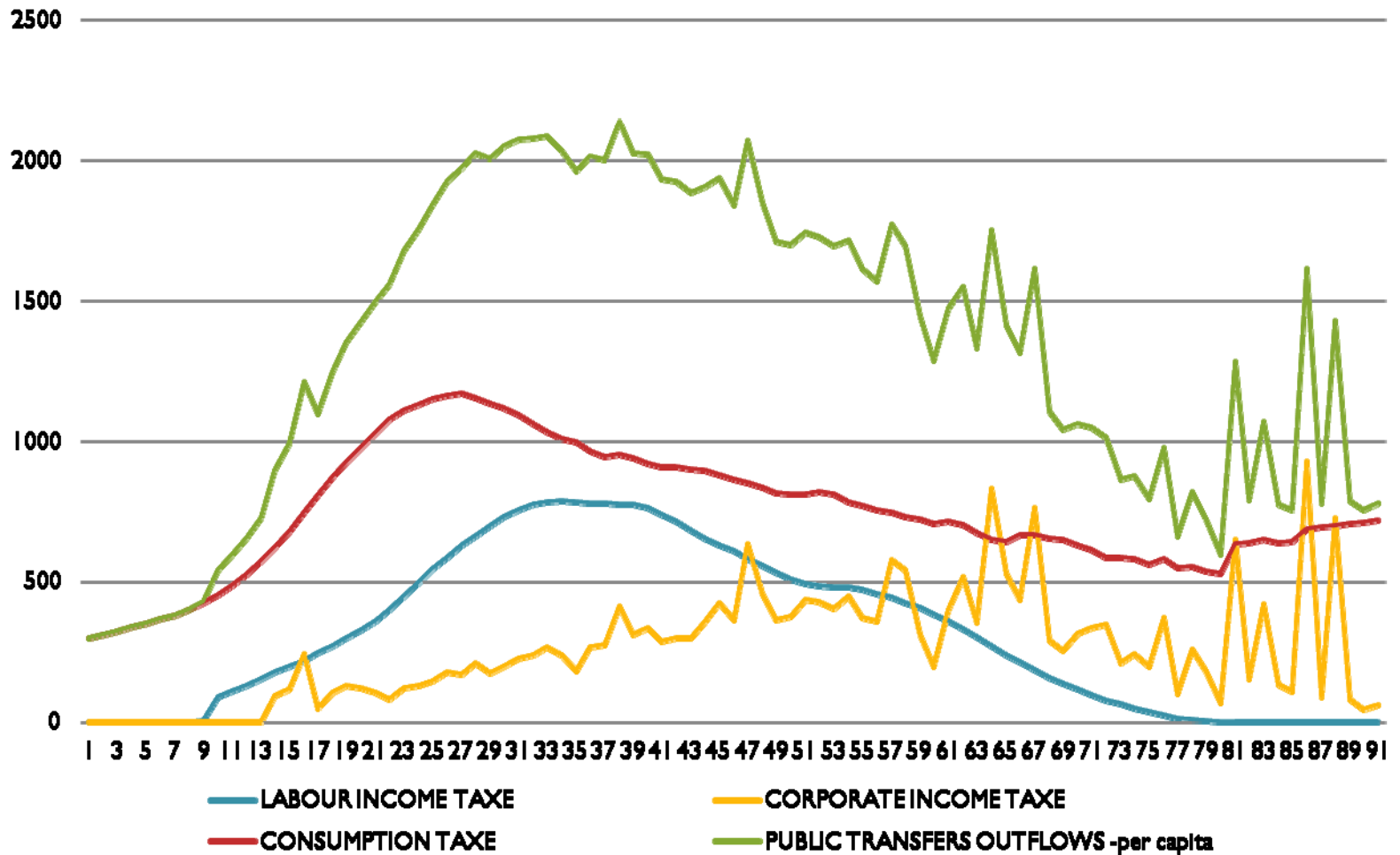
Consumption, Income and LCD (aggregate) - Mozambique, 2008



Public Transfer Inflows. Mozambique, 2008

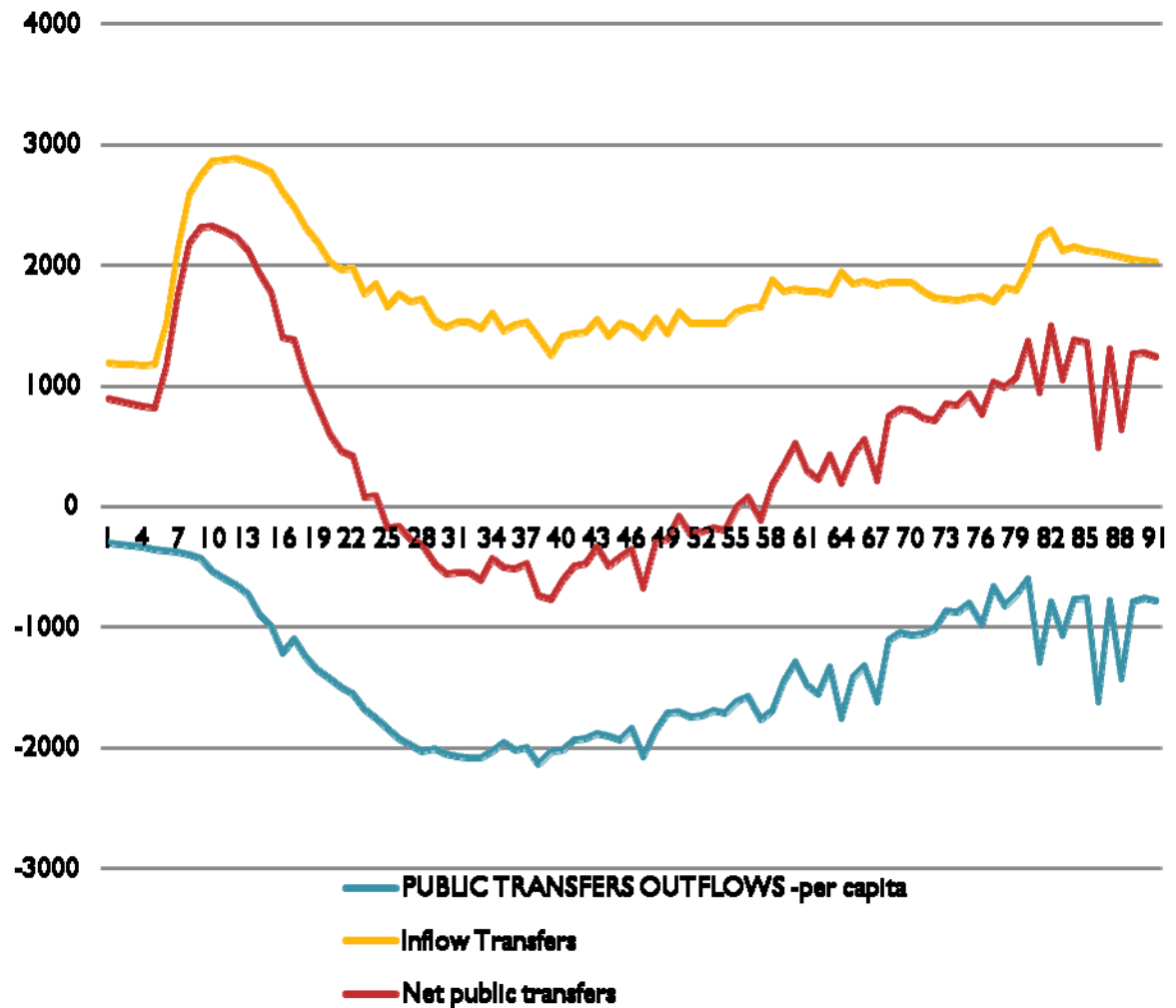


Public Transfer Outflows per capita. Mozambique, 2008



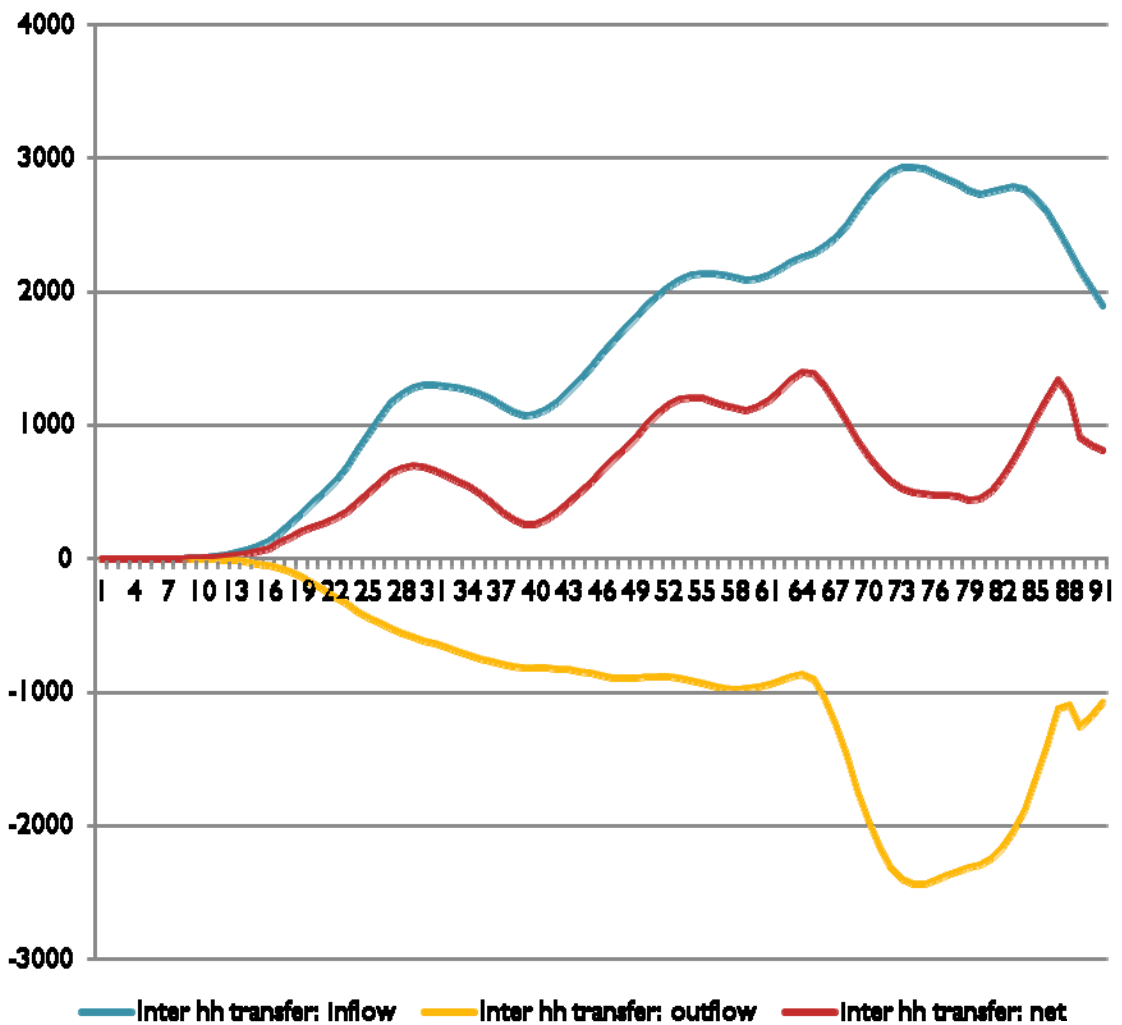
Net Public Transfers. Mozambique, 2008

- There are few taxes that government get from taxes payers, compared to which transfers.
- It results in public deficit.



Inter household transfers. Mozambique, 2008

• Net private inter household transfers is positive because remittances from ROW.





Way forward

- Complete the estimate of public age reallocations.
- Construct Intra Households transfers accounts.



THANK YOU