



This project has received funding from the European Union's Seventh Framework Programme for research, technological development and demonstration under grant agreement no 613247.

# THE ECONOMIC LIFE CYCLE AND ITS FINANCING AMONG DIFFERENT SOCIO-ECONOMIC GROUPS: NTA RESULTS DECOMPOSED BY GENDER, LEVEL OF EDUCATION AND COUNTRY OF BIRTH

11th Global Meeting of the NTA Network  
Saly, Senegal, June 24, 2016

**agenta**

Ageing Europe – An Application of National Transfer Accounts for Explaining and Projecting Trends in Public Finances

Tanja Istenič  
Ana Šeme  
Janez Malačič  
Aleša Lotrič Dolinar  
Jože Sambt

Faculty of Economics,  
University of Ljubljana

# EUROPEAN NTA DATA SET

- Comparable results for 26 EU countries (all except Croatia and Malta) for 2010
- Decomposition by: 1) Gender, 2) Completed level of education, and 3) Country of birth
- All the results are calibrated so that they match original (non-decomposed) NTA age profiles

# DECOMPOSING NTA RESULTS BY:

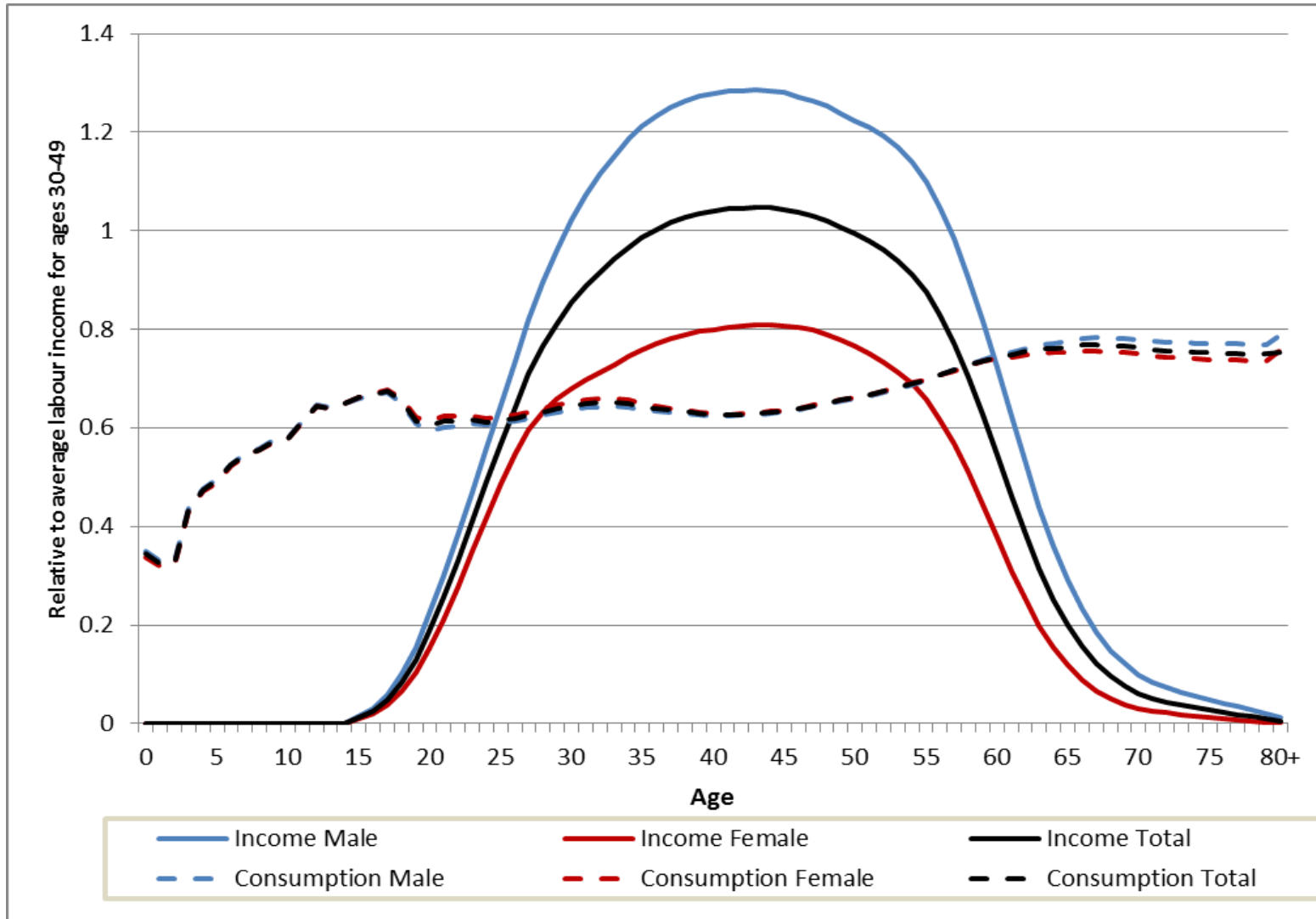
- **Gender** (26 countries)
- **Completed level of education** (20 countries)
  - basic (ISCED 0-2)
  - higher (ISCED 3-4)
  - tertiary (ISCED 5-6)
- **Country of birth** (11 countries)
  - foreign-born individuals
  - natives

# LIMITATIONS

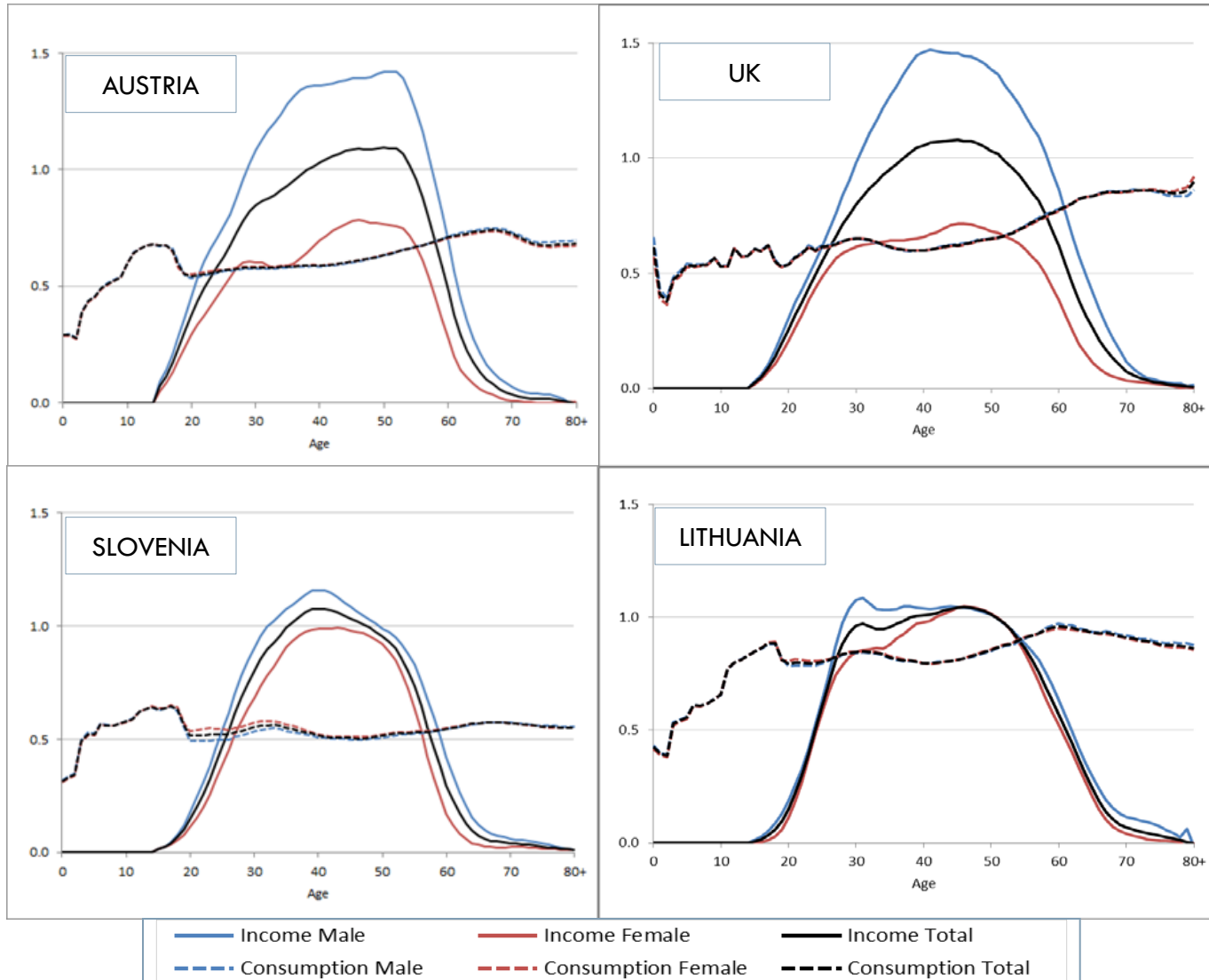
- HBS is still not available for estimating private consumption age profiles
- For NTA countries, we take the age profiles from the past and adjust them to the macro controls for 2010
  - I. Pattern of private consumption is quite stable over time
  - II. There is a small gender gap in private consumption
- For non-NTA countries, we take the average age profile of NTA countries

# NTA BY GENDER

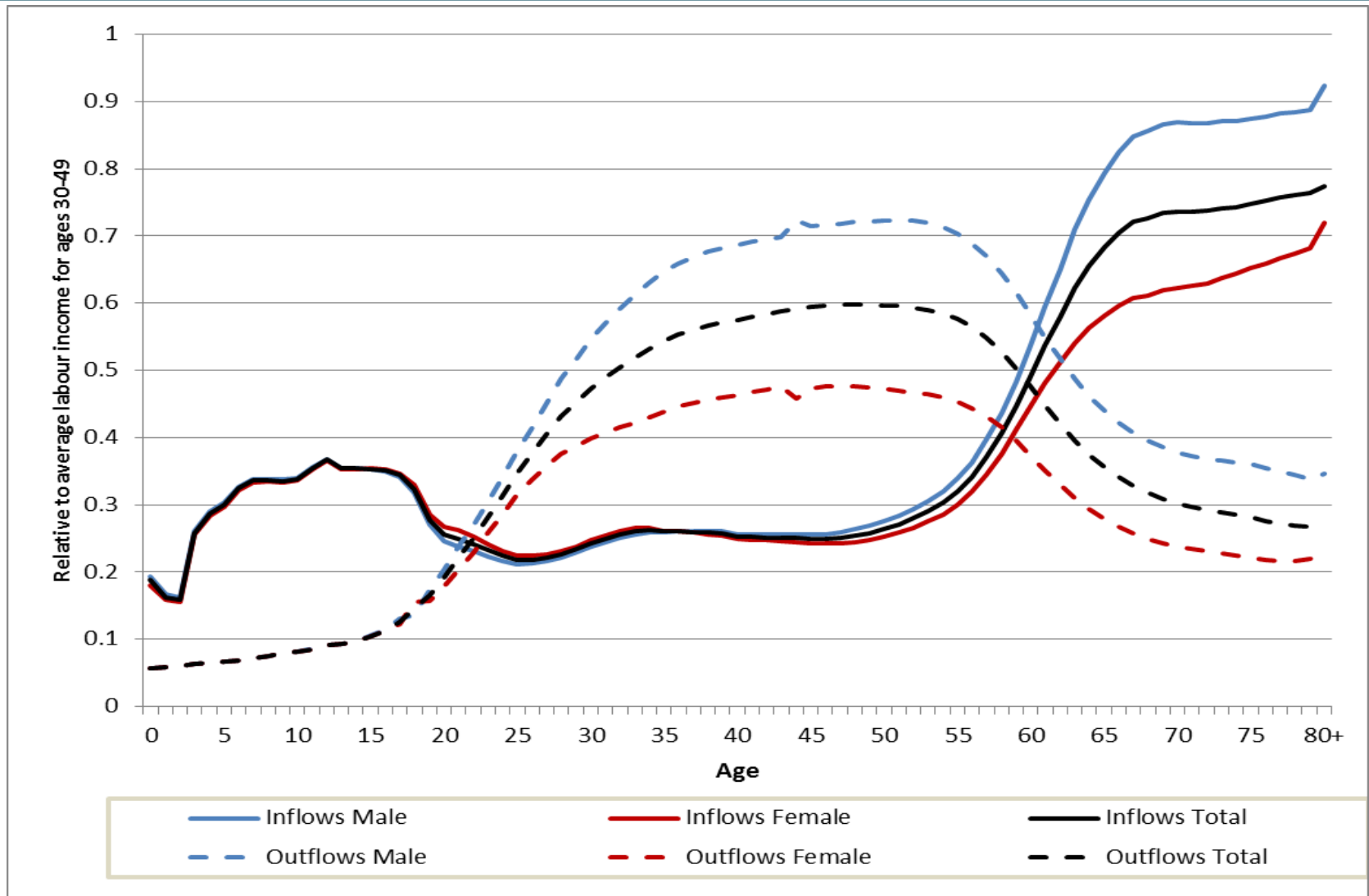
# LABOUR INCOME AND CONSUMPTION (EU 26 AVERAGE)



# LABOUR INCOME AND CONSUMPTION

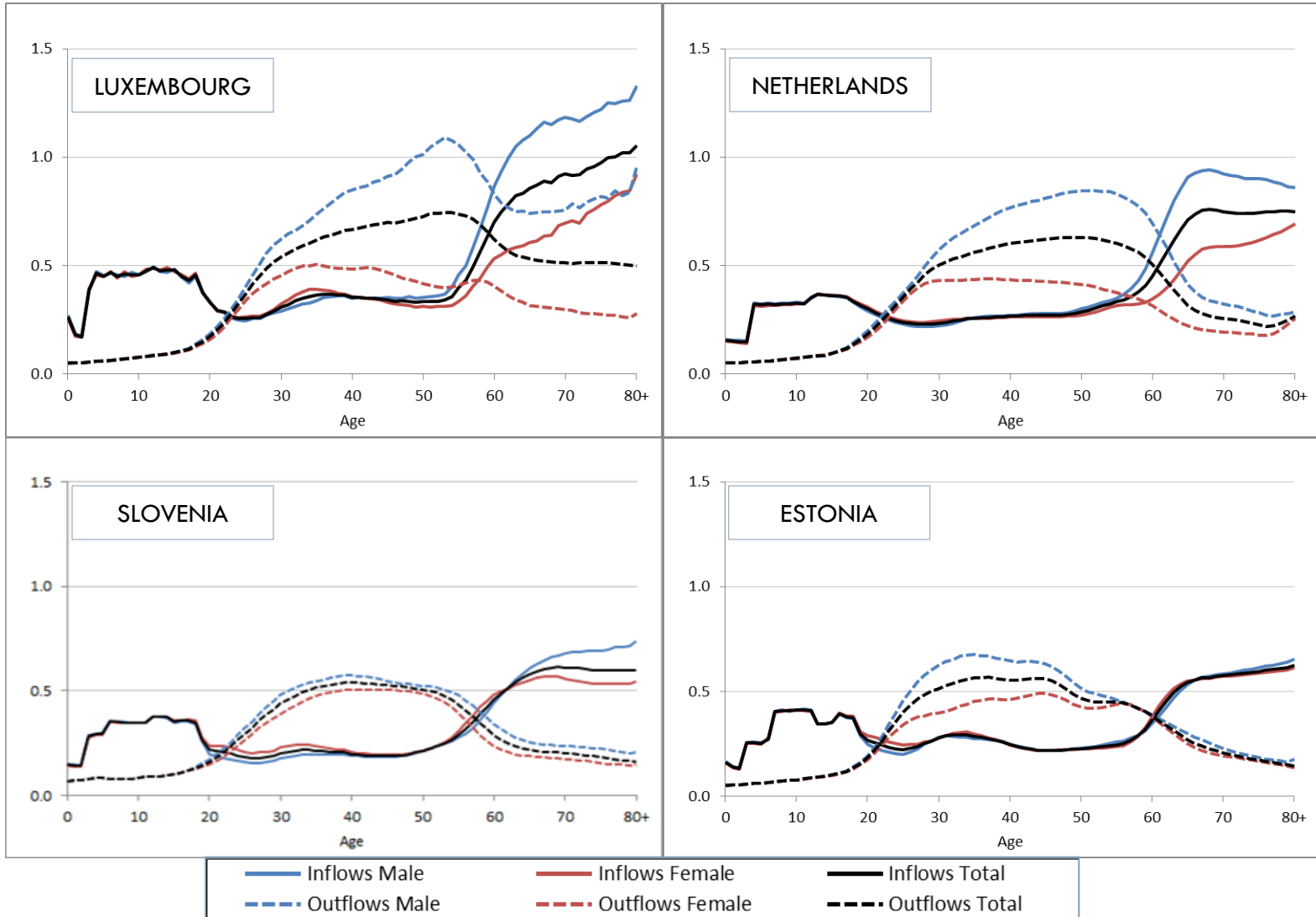


# PUBLIC TRANSFERS (EU 26 AVERAGE)

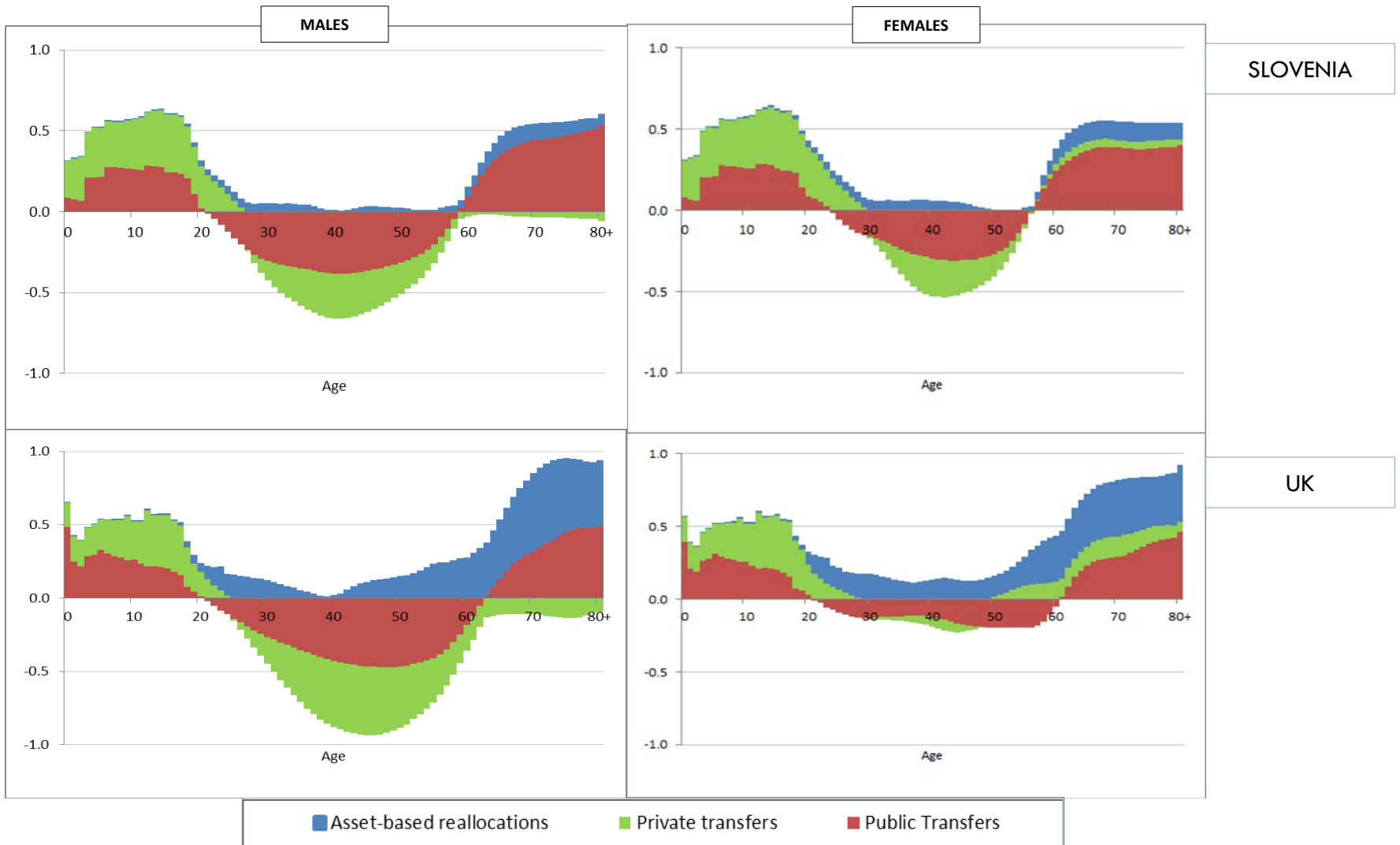




# PUBLIC TRANSFERS

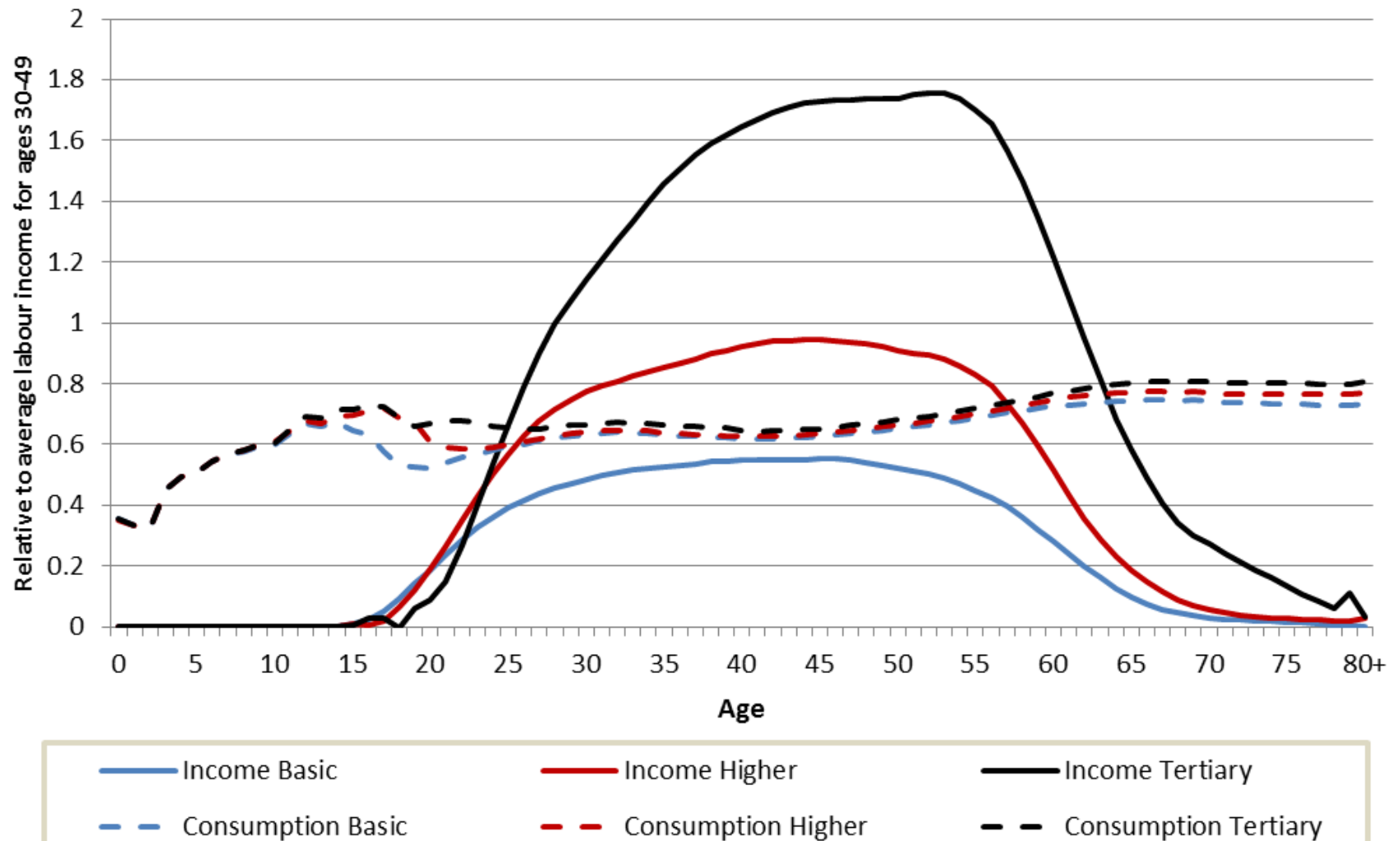


# FINANCING THE LIFE CYCLE DEFICIT

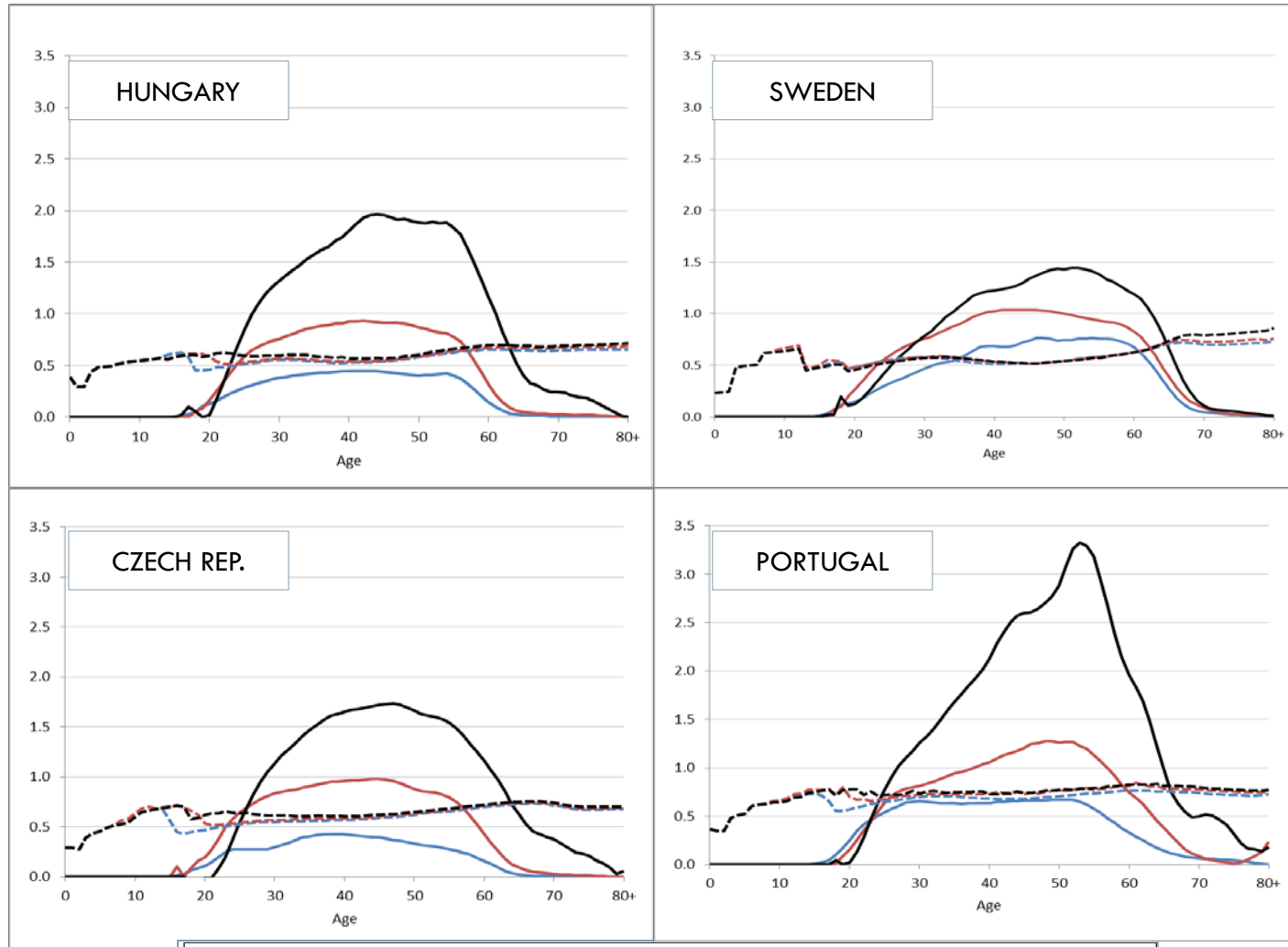


# NTA BY COMPLETED LEVEL OF EDUCATION

# LABOUR INCOME AND CONSUMPTION (EU 20 AVERAGE)

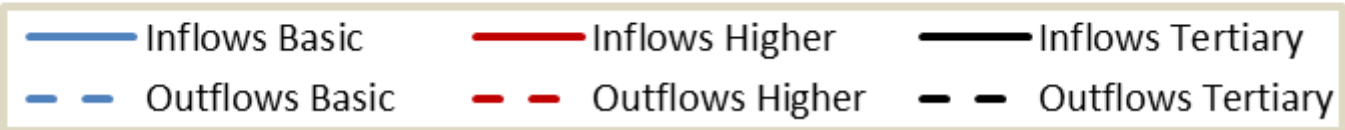
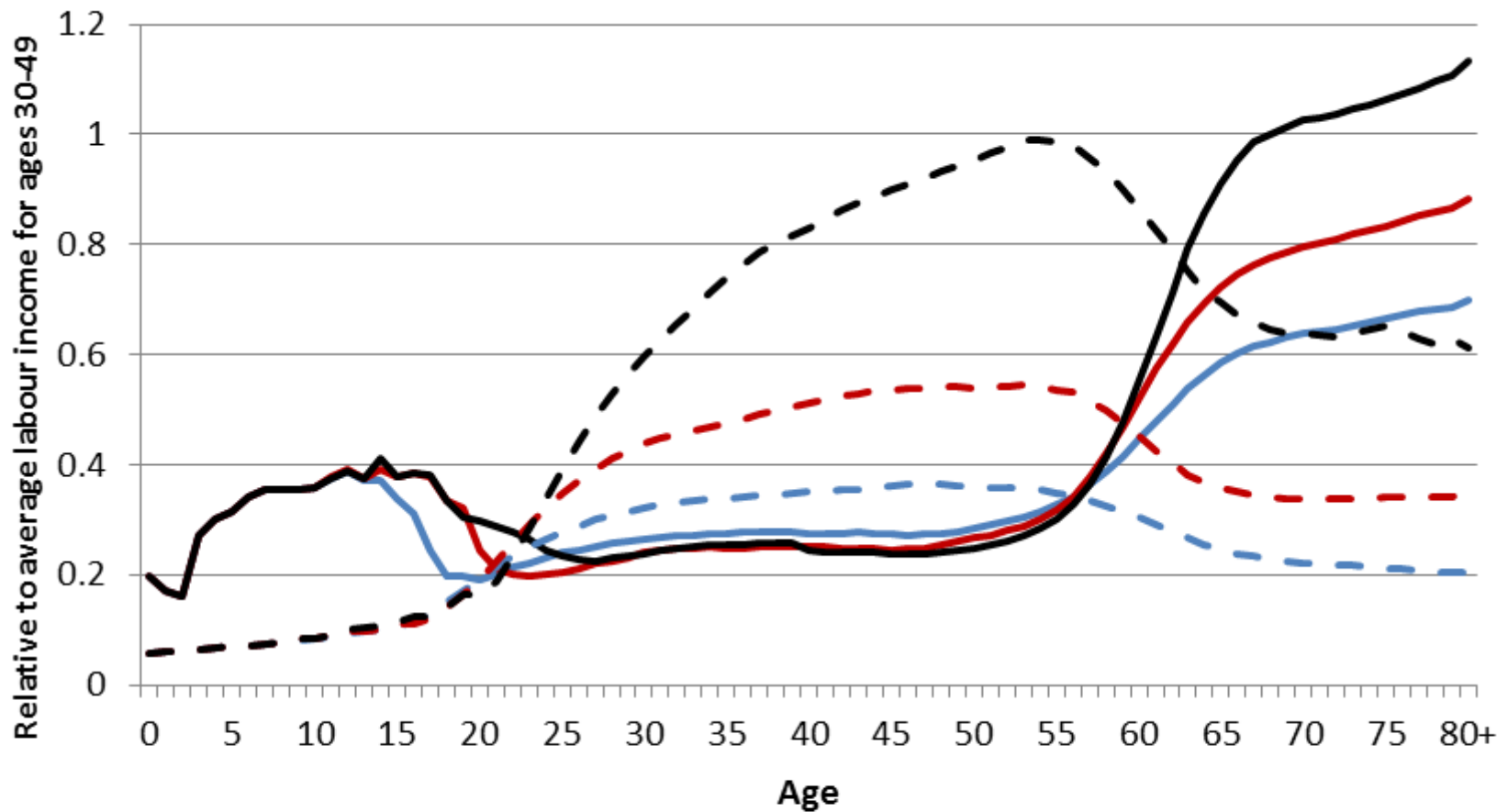


# LABOUR INCOME AND CONSUMPTION

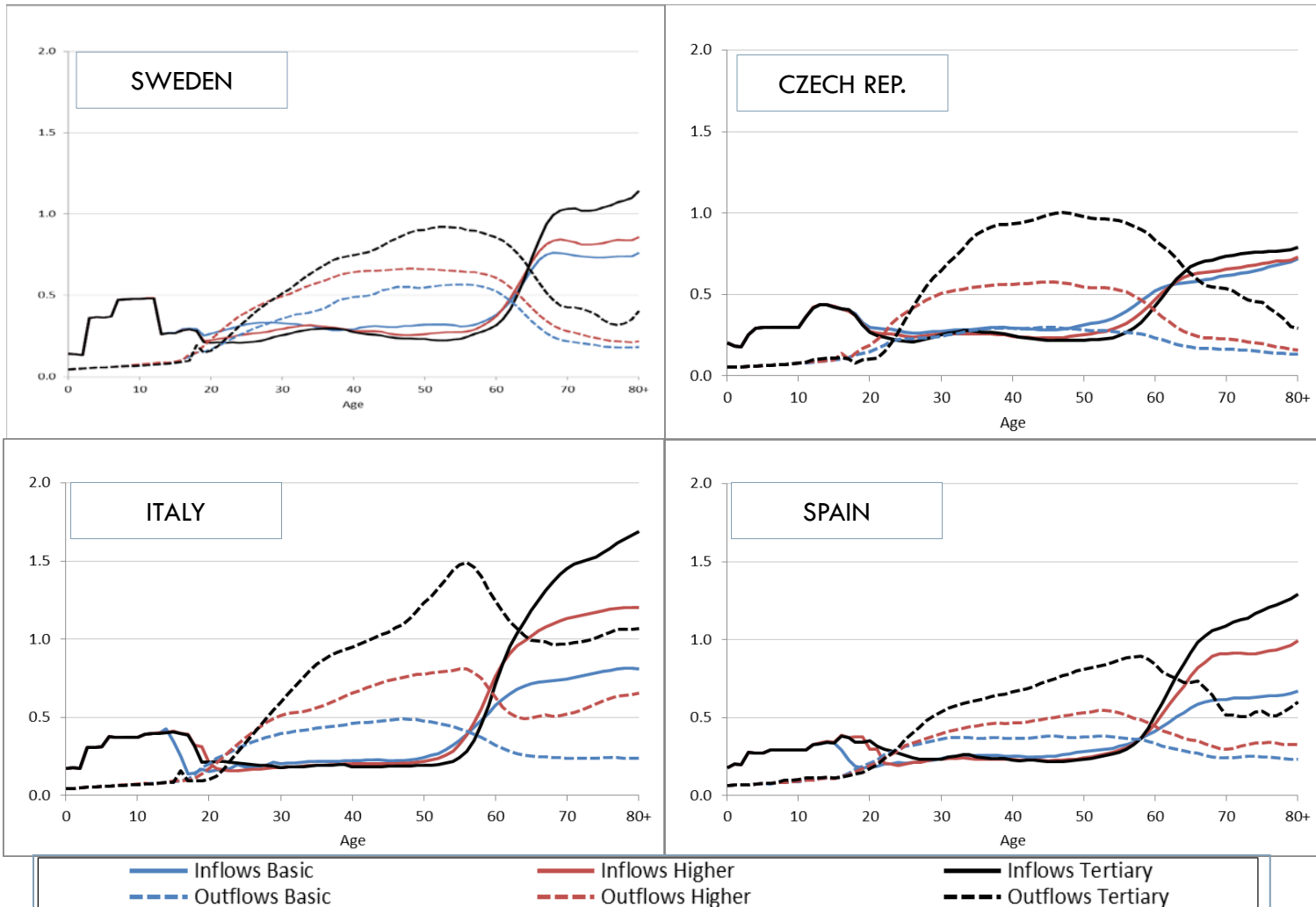


— Income Basic      — Income Higher      — Income Tertiary  
- - - Consumption Basic      - - - Consumption Higher      - - - Consumption Tertiary

# PUBLIC TRANSFERS (EU 20 AVERAGE)



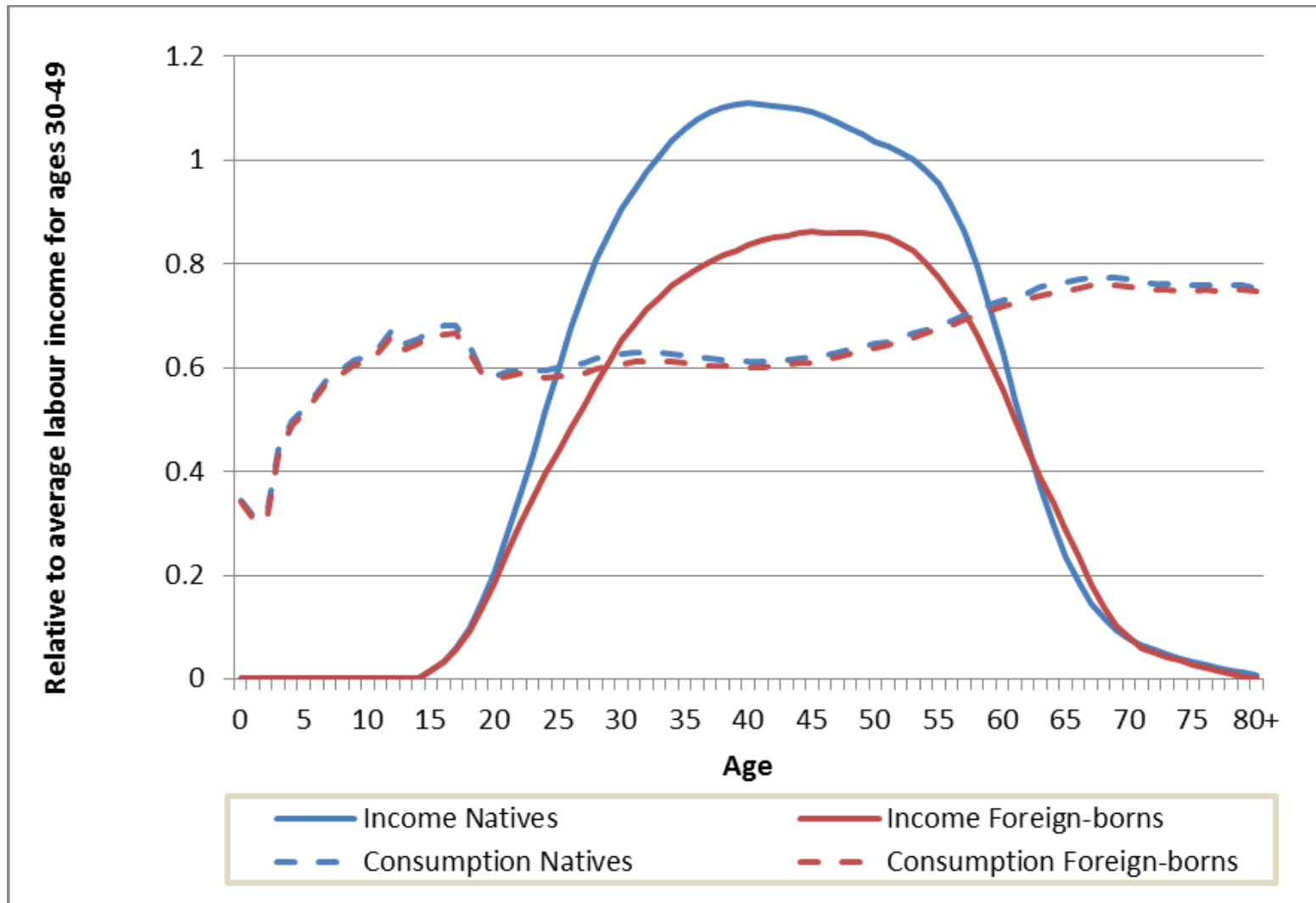
# PUBLIC TRANSFERS



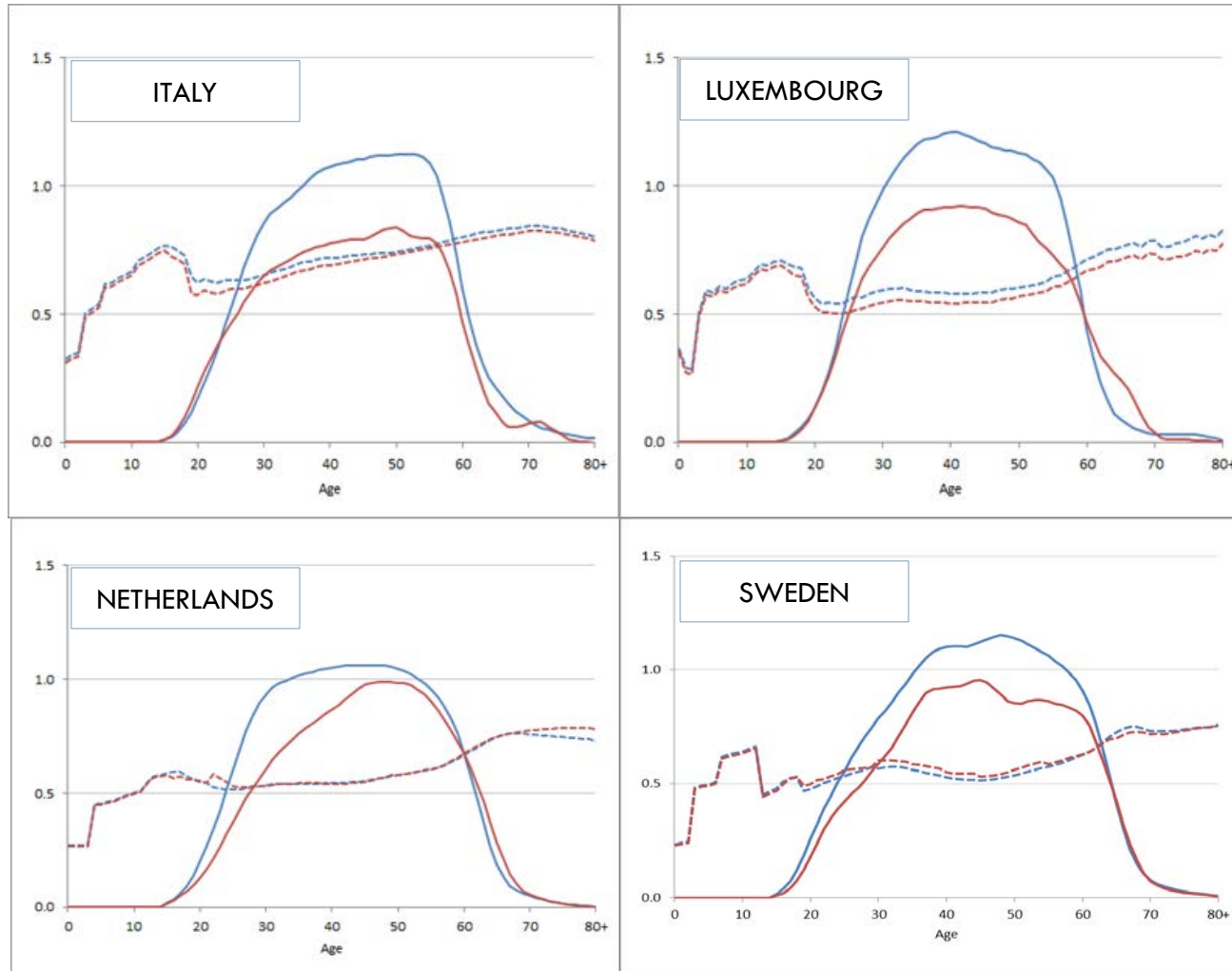
# NTA FOR NATIVE AND FOREIGN BORN



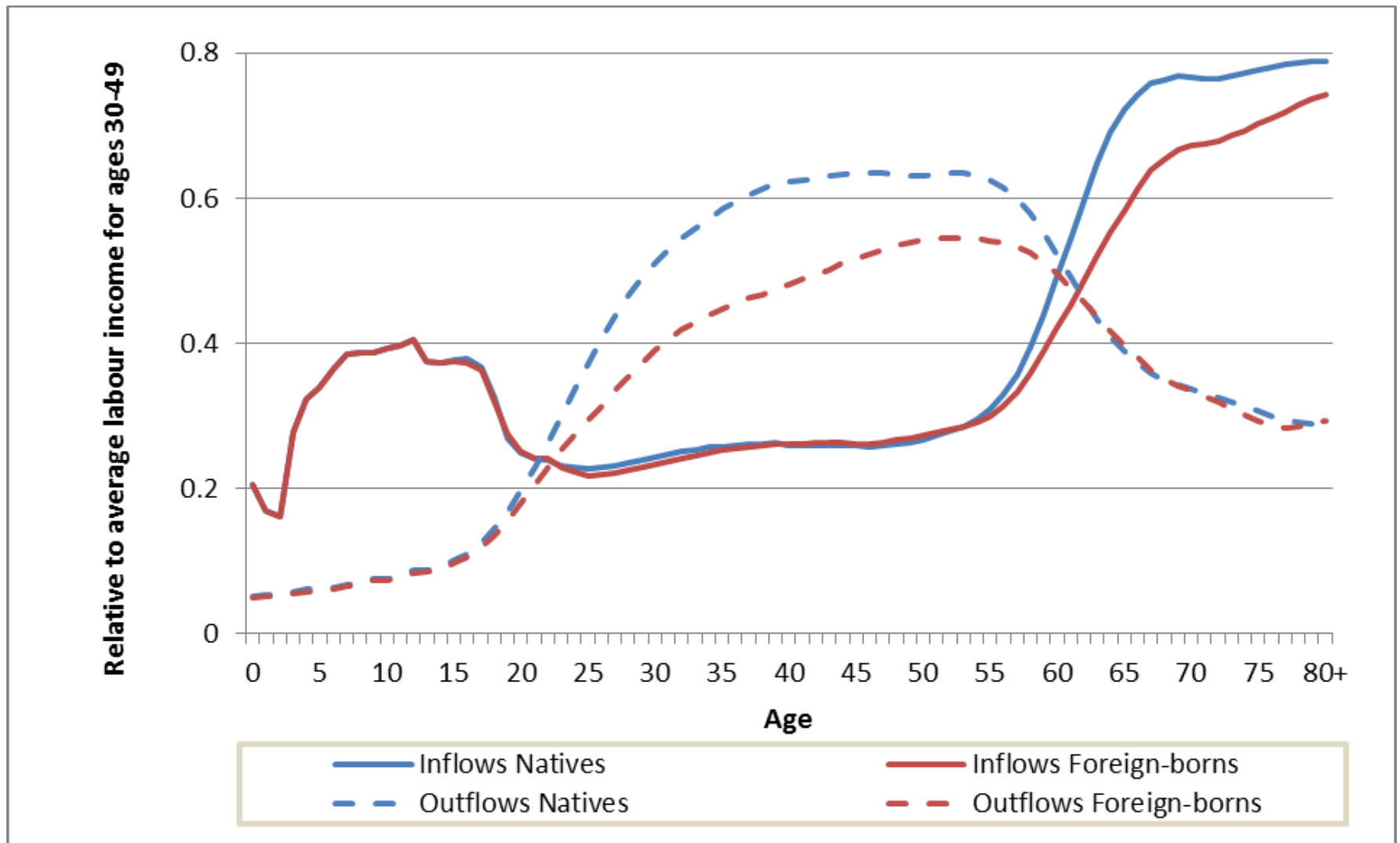
# LABOUR INCOME AND CONSUMPTION (EU 11 AVERAGE)



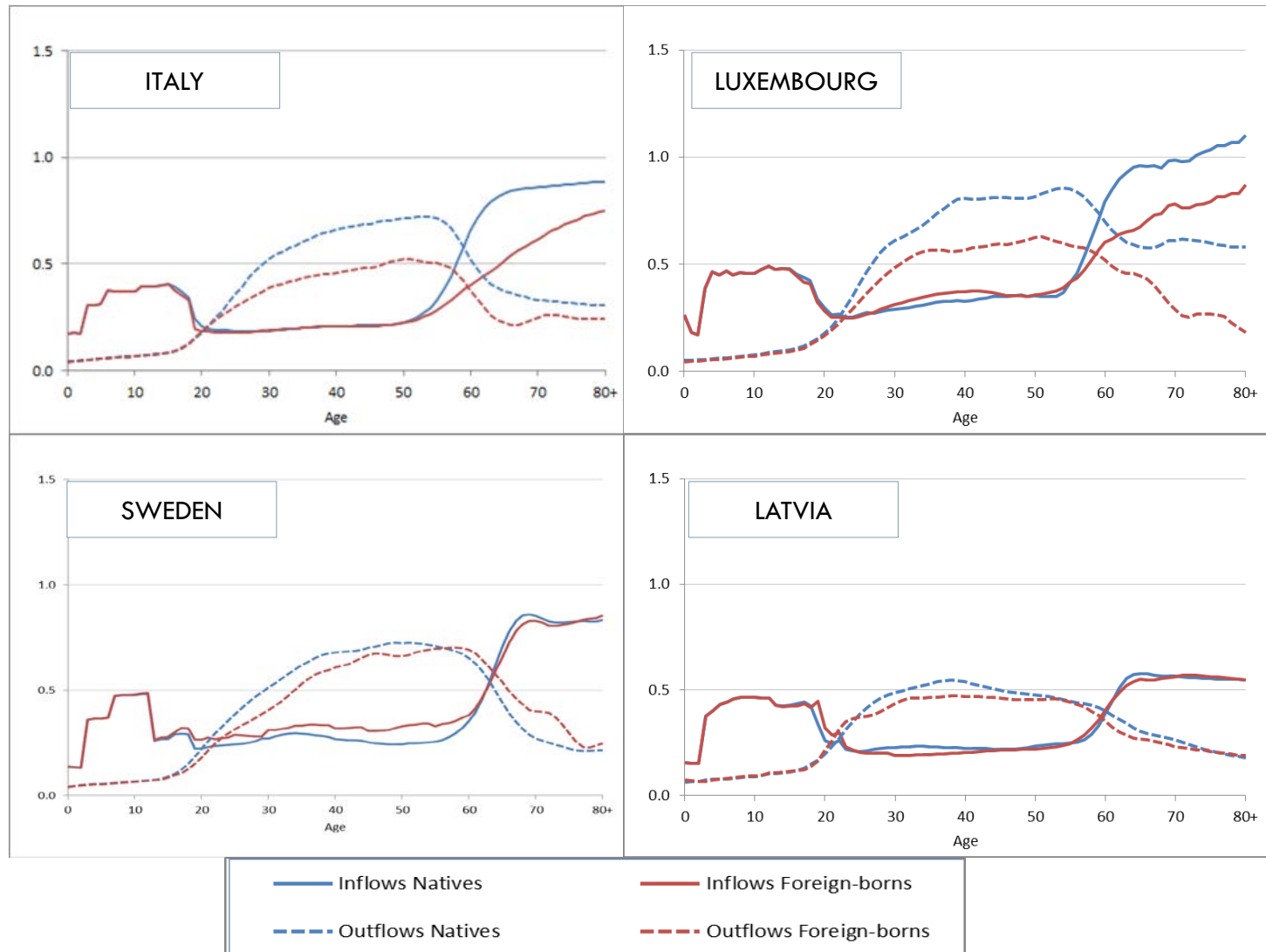
# LABOUR INCOME AND CONSUMPTION



# PUBLIC TRANSFERS (EU 11 AVERAGE)



# PUBLIC TRANSFERS



# ACKNOWLEDGEMENT



This project has received funding from the European Union's Seventh Framework Programme for research, technological development and demonstration under grant agreement no 613247.



Wittgenstein Centre

FOR DEMOGRAPHY AND  
GLOBAL HUMAN CAPITAL

A COLLABORATION OF IIASA, VID/OAW, WU

agenta