

# NTA by SES (NTASES?)

Sang-Hyop Lee  
University of Hawaii at Manoa  
East-West Center

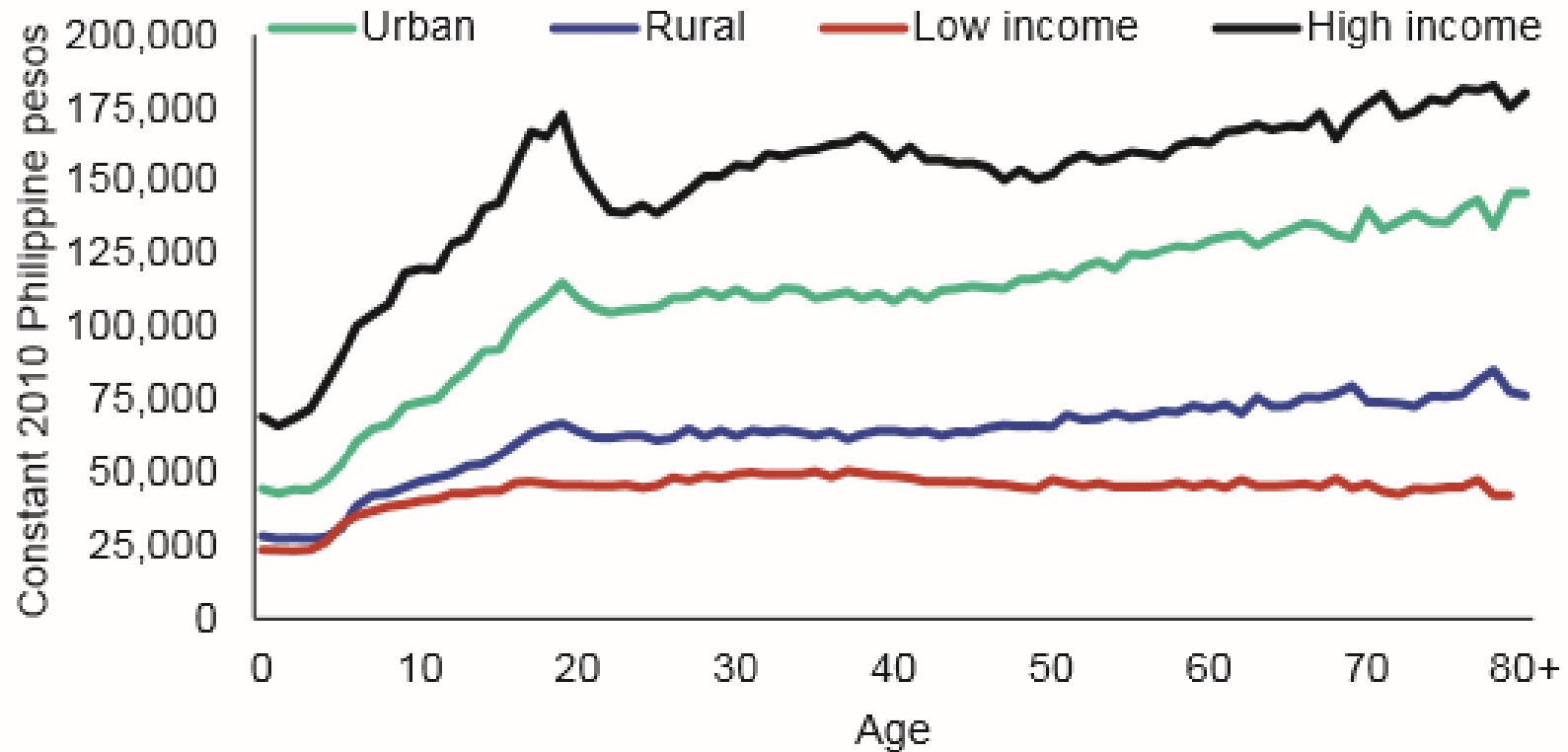
July 24, 2018  
NTA 12, Mexico City, Mexico



# NTA by SES in Asia

- Household type (Taiwan)
- By income/consumption quintile (China, Philippines)
- Rural/urban (China, Philippines, Timor-Leste)
- Regional discrepancies (Korea, Indonesia)
- Formal/informal sector (India)
- Gender (many)

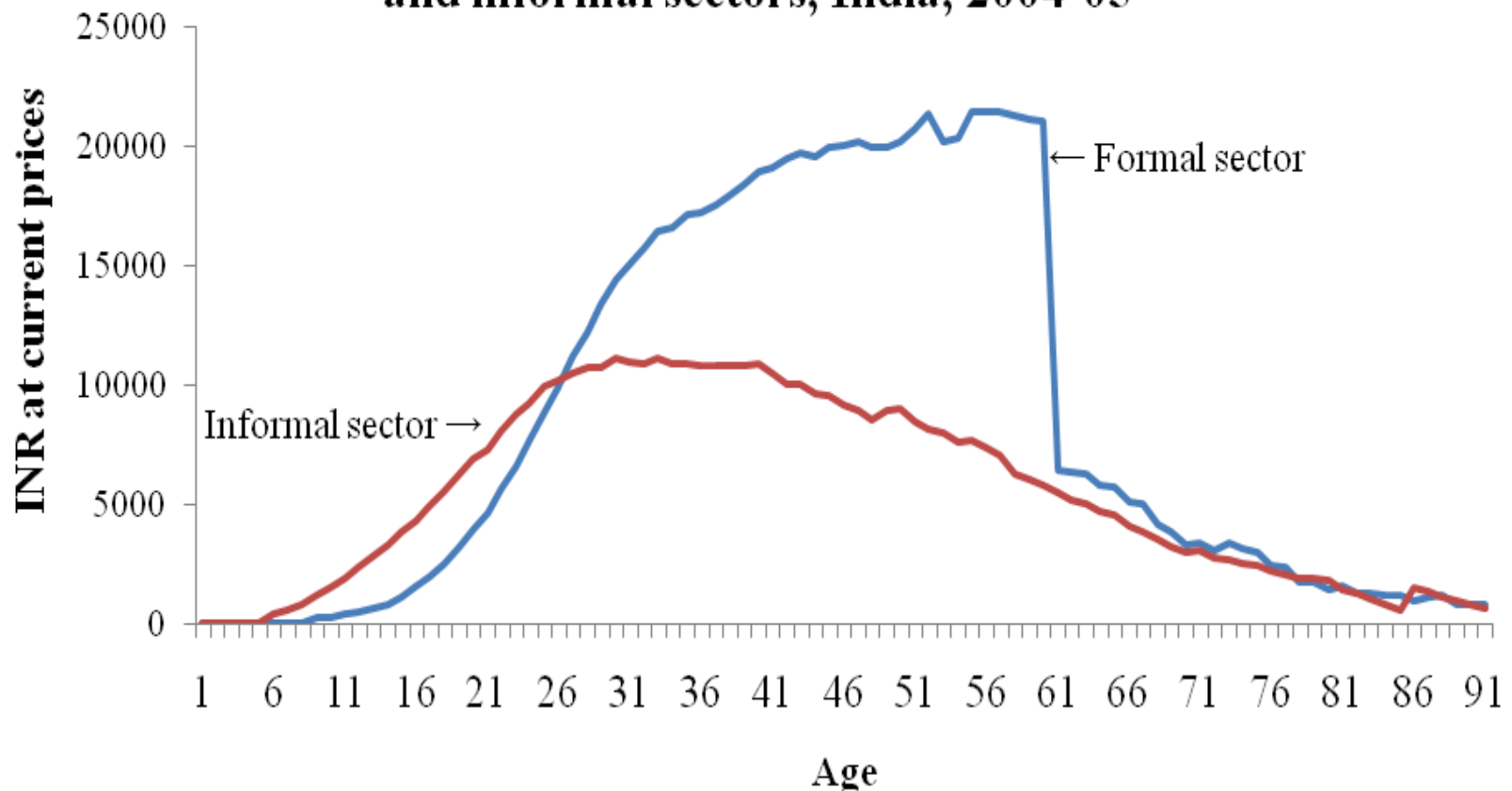
# Per capita consumption by income level and place of residence: Philippines 2011



Source: Abrigo et al. (2016)

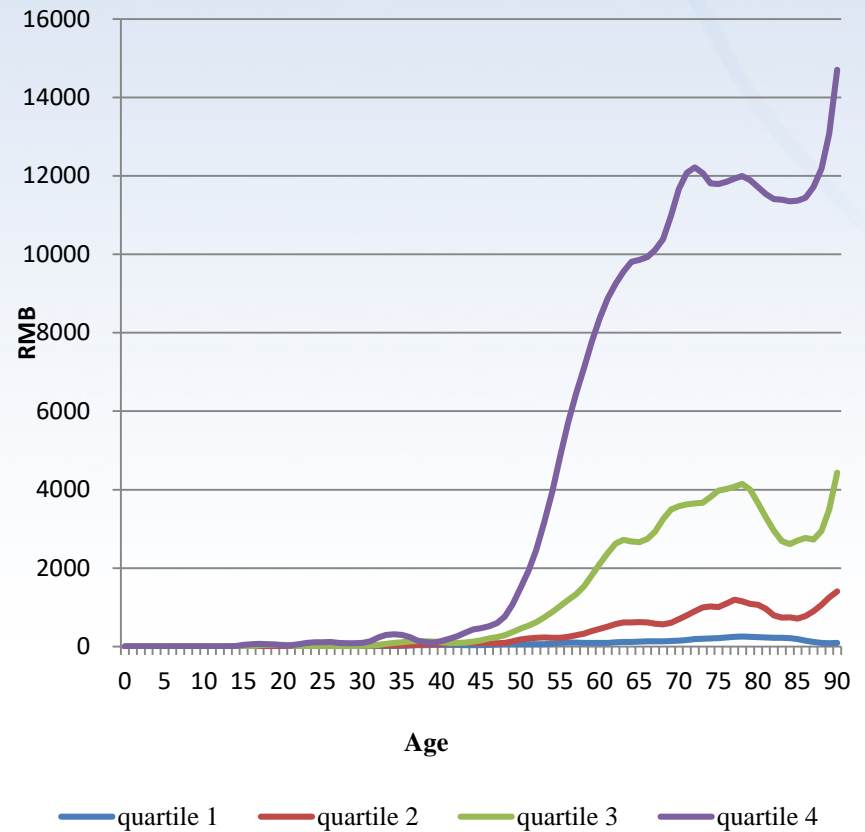
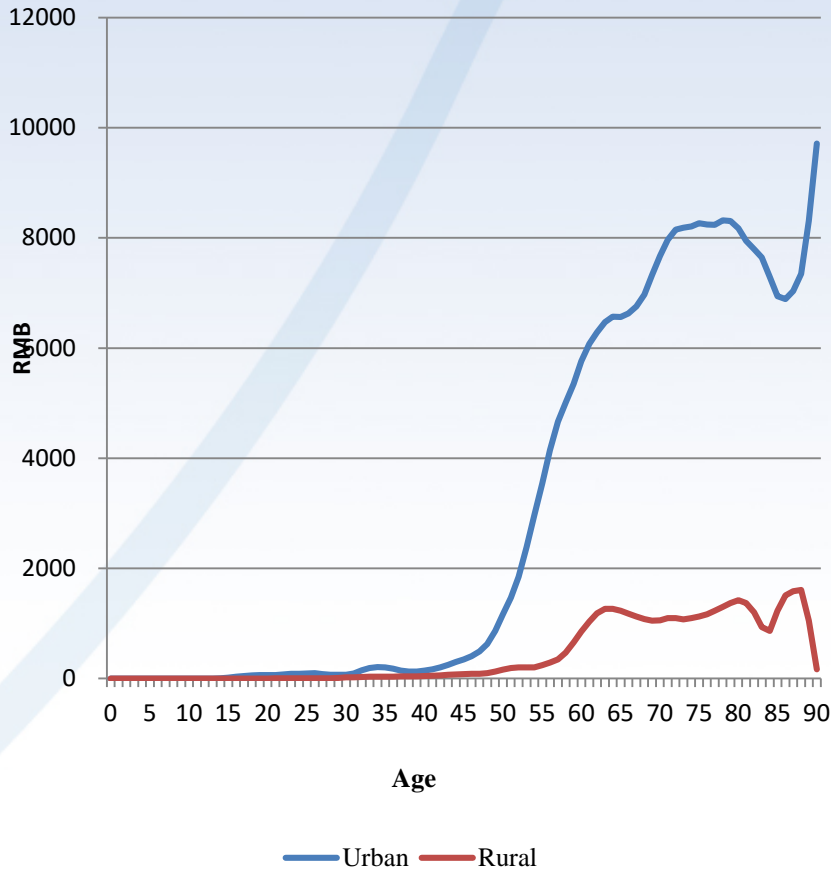
# Labor income profiles by formal vs. informal sector (India, 2004-05)

**Figure 3: Age profile of per capita labour income by formal and informal sectors, India, 2004-05**



Source: Narayana (2014)

# Pension benefit profiles by residence and per capita household income (China, 2009)

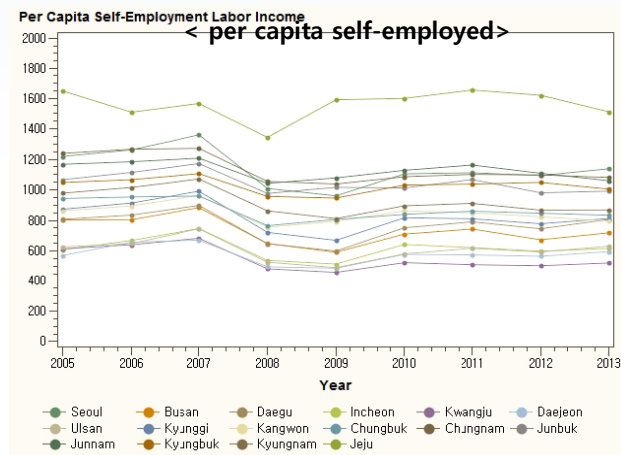
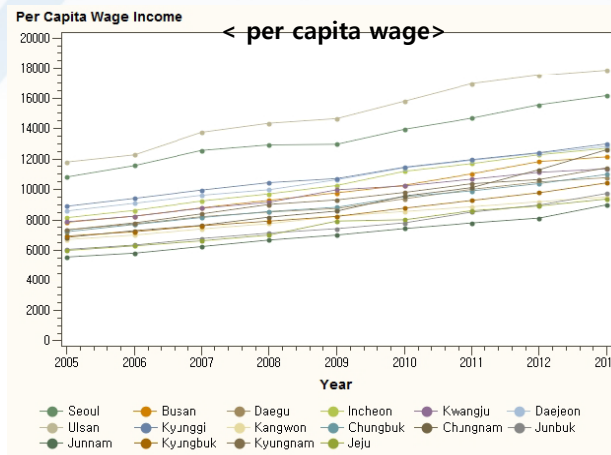
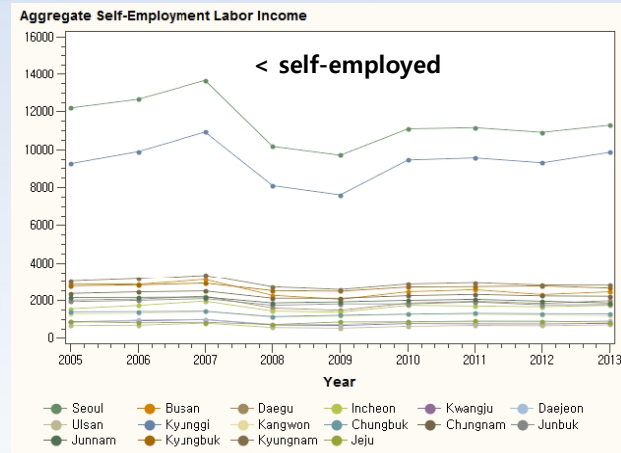
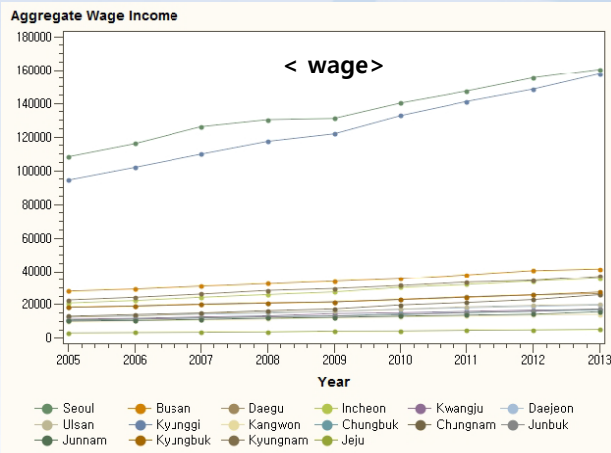


Source: Shen and Lee (2014)

# NTA by region (South Korea, 2005-2013)

## aggregate control (constructed by HK Kim)

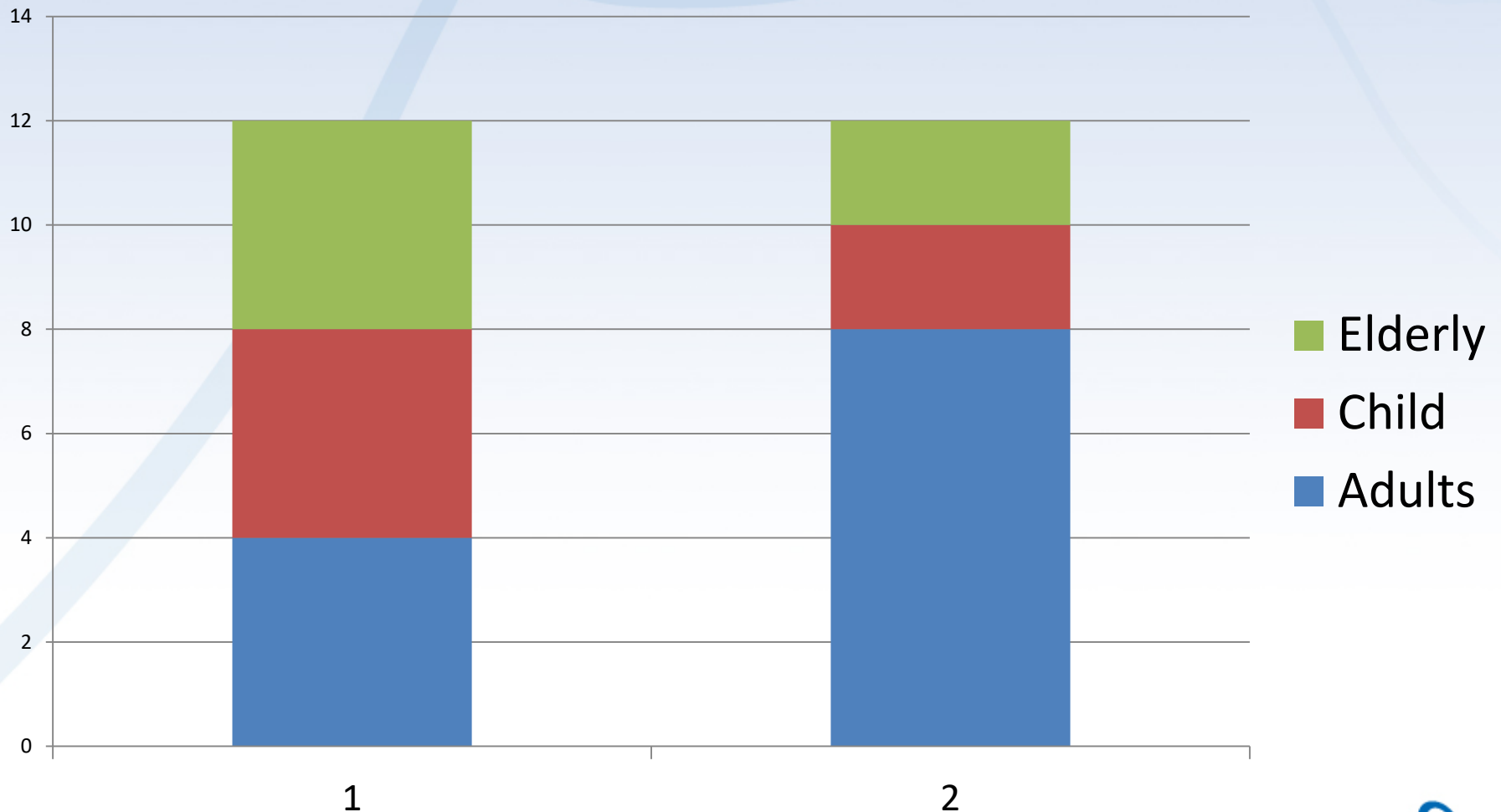
– Compensation of Employees by region (2005-2013)



# Household characteristics? (disaggregation of data)

- 1) Total household income/consumption (labor earnings, self-employment income, asset income, transfer income, consumption)
- 2) Per capita household income/consumption
- 3) Equivalence scale based on per capita household income/consumption
- 4) Measure of inequality: How about measuring inequality based on NTA?

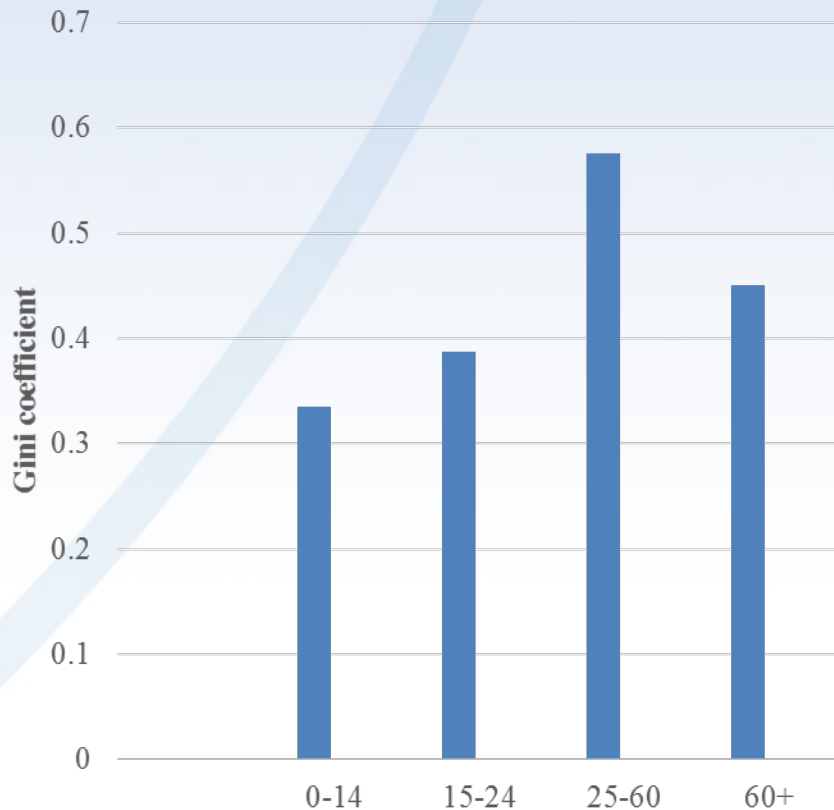
# Example: Two households with same total and per capita consumption



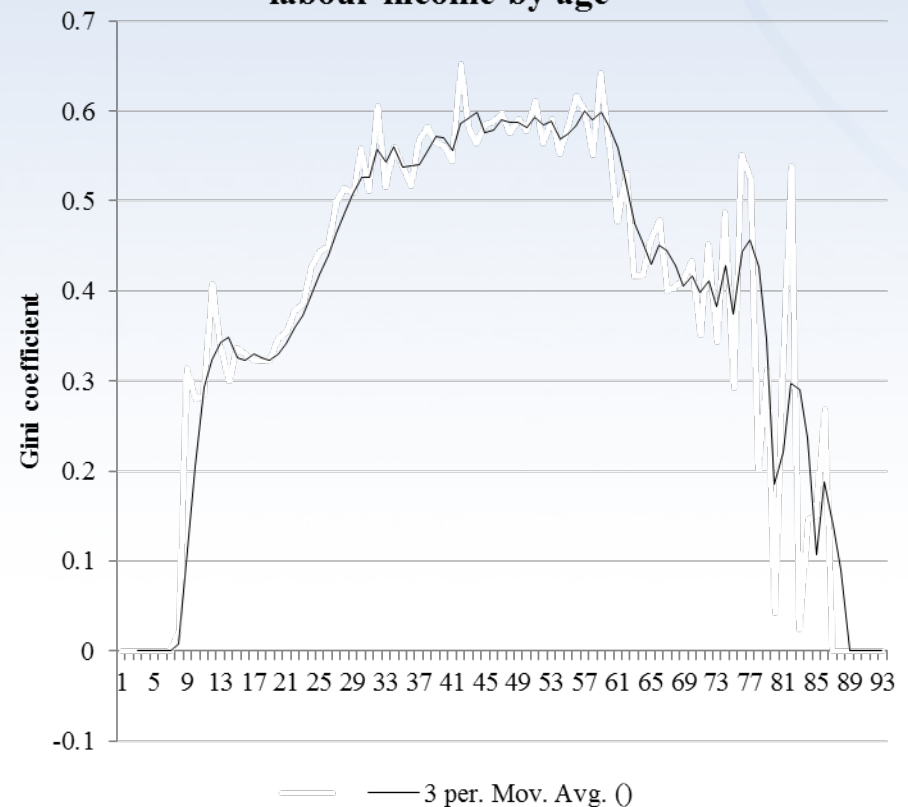


# Inequality in distribution of labor income by age and generation

**Inequality in distribution of total labour income by generations**

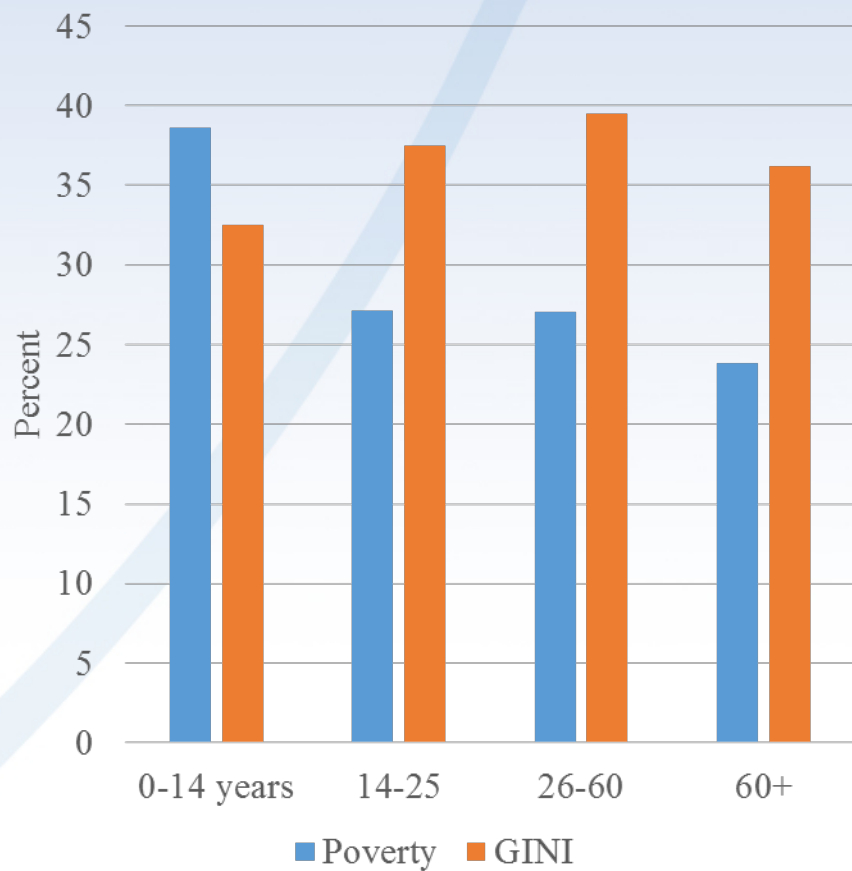


**Figure: Inequality in distribution of total labour income by age**

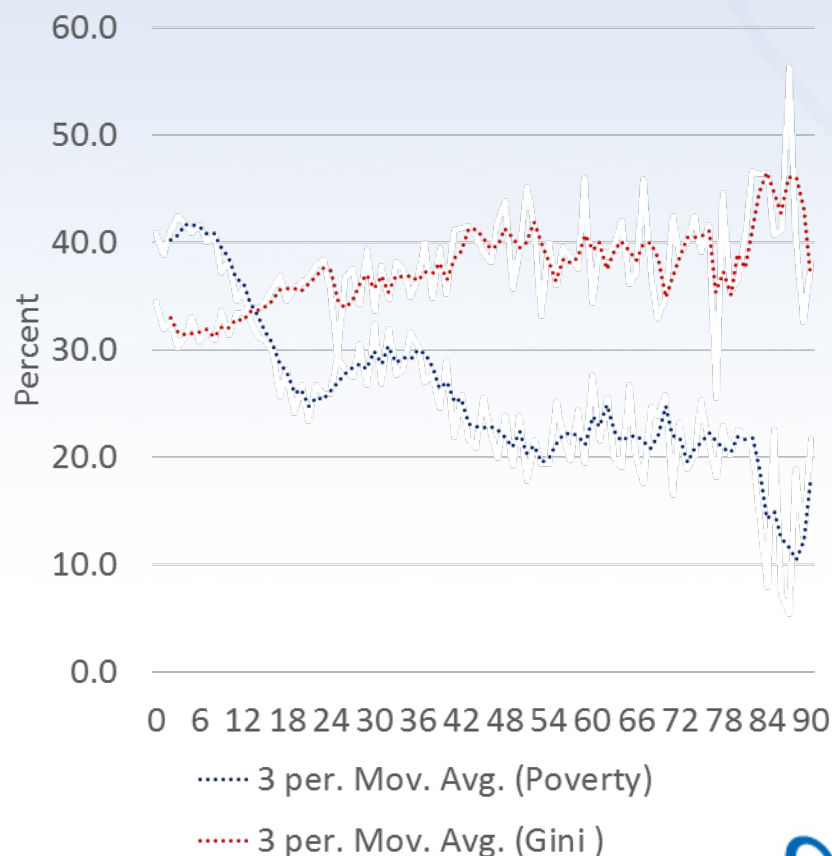


# Consumption poverty and inequality by age and generation (URP data)

Consumption (URP based) poverty and inequality by generations, India



Consumption (URP based) poverty and inequality by age, India



# Macro control and assignment problem

- You need separate macro controls by SES
  - Can still assign based on micro survey data share
- Still problem: CPI , cost of living adjustment
- Discrepancy between NTA variables (production vs. consumption)
- Public consumption!
  - Still should be per capita at national level