

# NTA work of Vietnam Team

Hua Hin, 24/12/2010

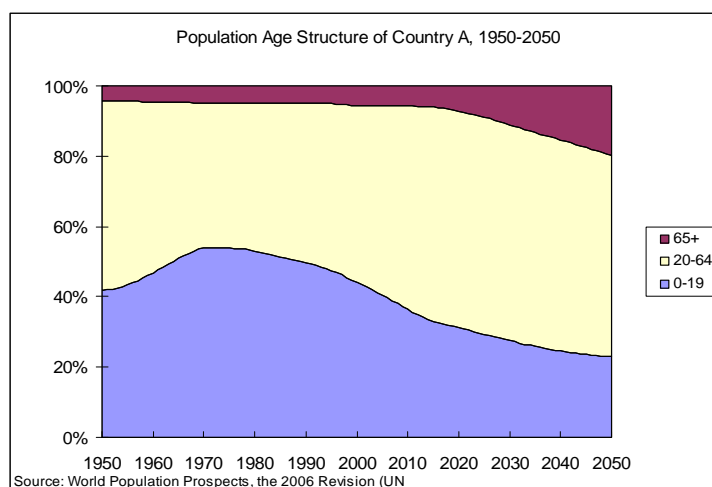
## Team Members

- **Pham Ngoc Toan**, Researcher,  
Center of Information, Strategy Analysis and Forecast  
Institute of Labor Science and Social Affairs  
Ministry of Labour, Invalids and Social Affairs
- **Hoang Thuy Yen**, Lecturer,  
Institute of Finance, Ministry of Finance
- **Bui Thi Minh Tiep**, Lecturer  
Hai Phong University
- **Pham Minh Thu**, Deputy Head  
Industrial Relation Studies Division  
Institute of Labor Science and Social Affairs  
Ministry of Labor, Invalids and Social Affairs

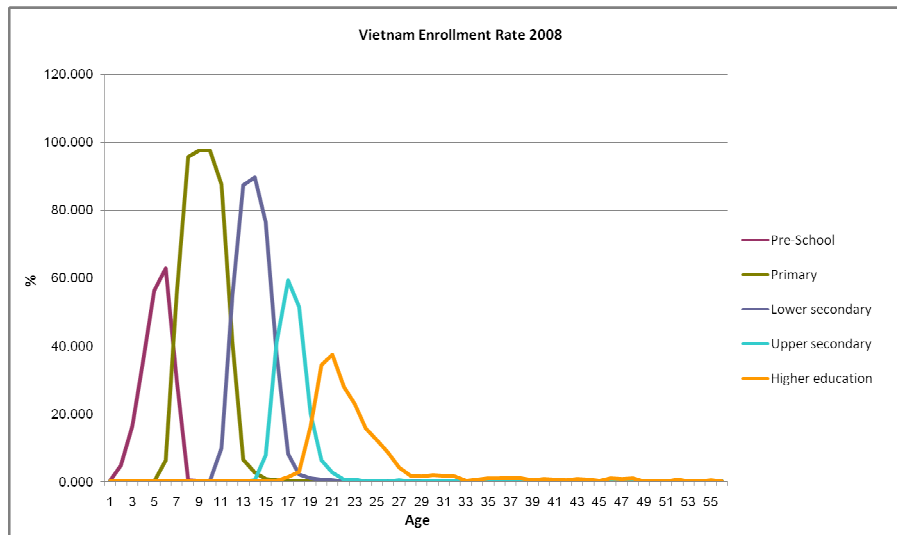
## Data Sources

- **Input/Output Table 2007**
  - Household Consumption on Education, Health care cost and other cost
  - Government Consumption on Education, Health care cost and other cost
  - Production Tax
- **Vietnam Household Living Standard Survey 2008** (two year/time)
  - Educational cost at individual level
  - Health care cost at individual level
  - Other cost at household level
- **UN population forecast 2006-2050**

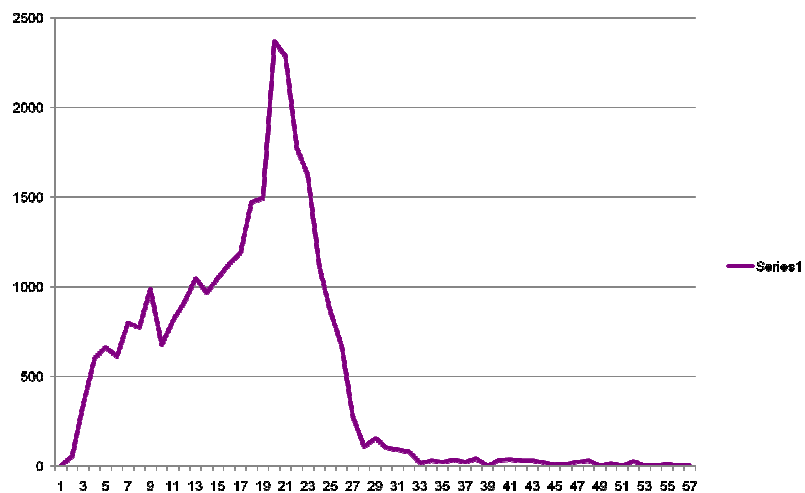
## Population Age Structure



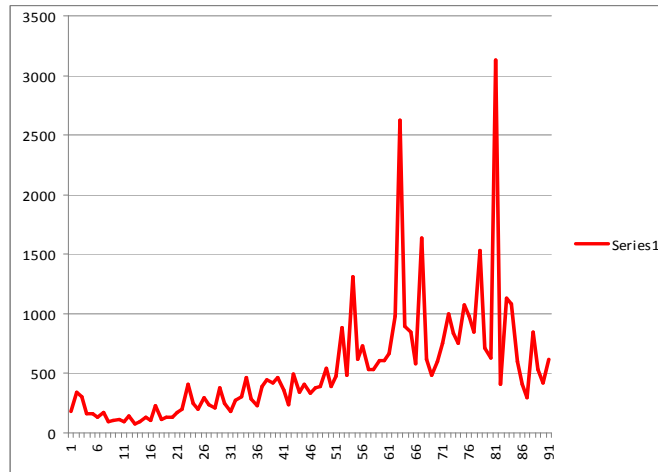
## Enrollment Rate (%)



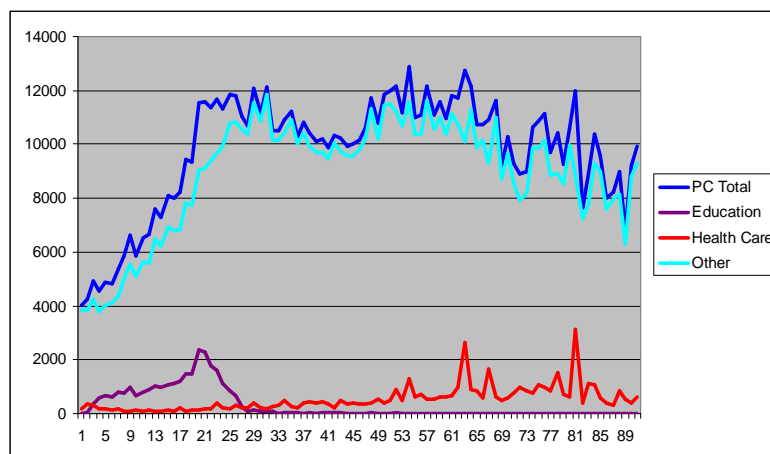
## Private Consumption (1)- Education



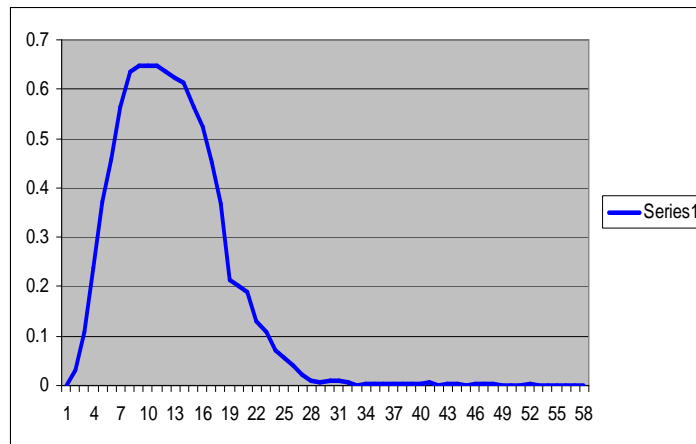
## Private Consumption (2)- Health Care



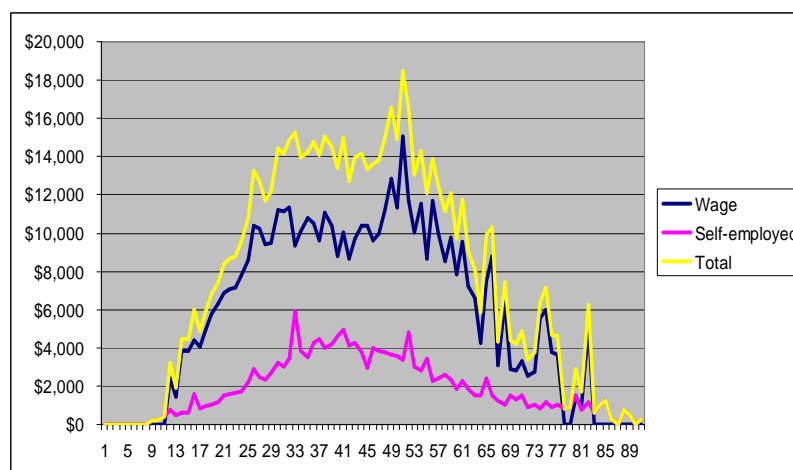
## Private Consumption (3)- Total



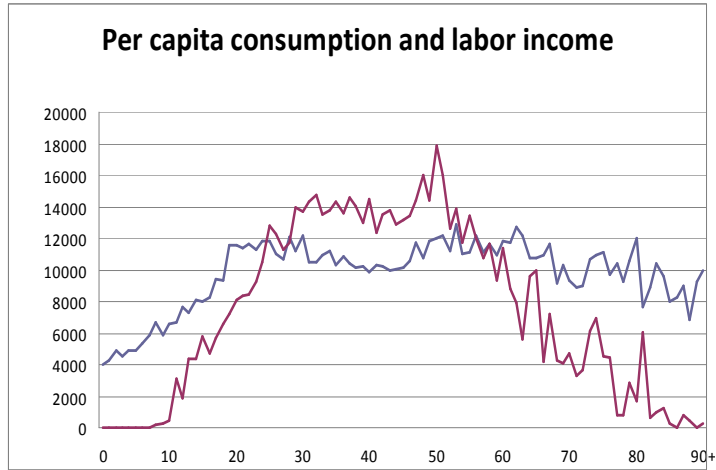
## Public Consumption (4)- Education



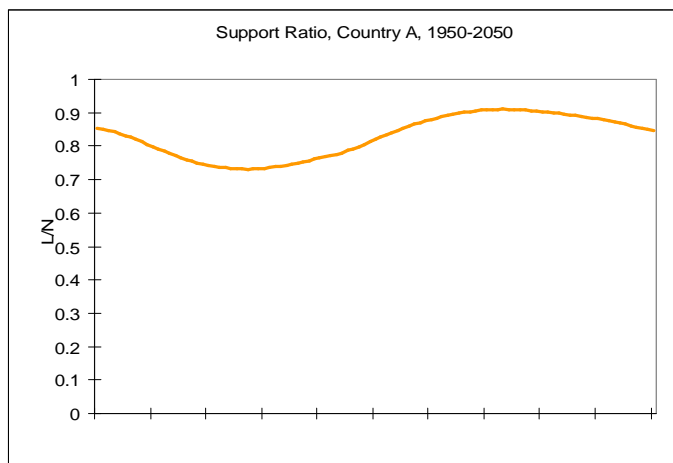
## Labor Income



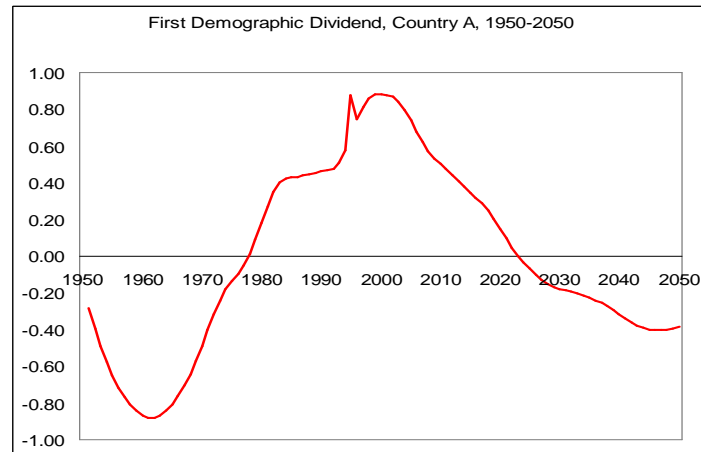
# Lifecycle



# Support Rate



## First demograph dividend



## Next to do

- Estimation the self-employment income from National Account
- Allocate Public Health Care Consumption
- Study more about NTA: asset reallocation, transfers
- Results analysis