



National Transfer Account Training **Country Report: Malaysia**

Sharifah Azizah Haron
Institute of Gerontology
Universiti Putra Malaysia

With Knowledge We Serve



Outline

- 1. Background Information**
- 2. Enrollment rate by age and level of education**
- 3. Private consumption and macro control**
- 4. Public consumption**
- 5. Labor income and macro control**
- 6. Life cycle graph**
- 7. Demographic dividend**
- 8. Limitation**

With Knowledge We Serve

Overview



With Knowledge We Serve

Overview

POPULATION SIZE AND AGE-STRUCTURE, 2000-2010 (million persons)

	2000	%	2005	%	2010	%	Average Annual Growth Rate (%)	
							8MP	9MP
Total Population	23.49		26.75		28.96		2.6	1.6
Citizens	22.08	100.0	24.36	100.0	26.79	100.0	2.0	1.9
Bumiputera	14.35	65.0	16.06	65.9	17.95	67.0	2.3	2.2
Chinese	5.76	26.1	6.15	25.3	6.52	24.3	1.3	1.2
Indian	1.70	7.7	1.83	7.5	1.97	7.4	1.6	1.4
Others	0.27	1.2	0.32	1.3	0.35	1.3	2.6	2.2
Non-Citizens ¹	1.41		2.39		2.17		11.0	-1.8
Age Structure								
0-14	8.00	34.0	8.72	32.6	9.18	31.7	1.7	1.0
15-64	14.56	62.0	16.88	63.1	18.42	63.6	3.0	1.8
65 and above	0.93	4.0	1.15	4.3	1.36	4.7	4.3	3.4
Dependency Ratio (%)	61.4		58.5		57.2			
Median Age (years)	22.4		23.3		24.2			
Total Fertility Rate	2.88		2.76		2.48			
Bumiputera	3.38		3.18		2.80			
Chinese	2.25		2.19		2.04			
Indian	2.46		2.34		2.15			
Urban (%)	62.0		63.0		63.8			
Rural (%)	38.0		37.0		36.2			

Source: Department of Statistics and Economic Planning Unit

Notes: ¹ This includes permanent residents, foreign workers with work permits, expatriates and foreign students.

With Knowledge We Serve

Overview

TABLE A-1

FEDERAL GOVERNMENT DEVELOPMENT ALLOCATION AND EXPENDITURE BY SECTOR, 2001-2010 (RM million)

Sector	8 MP		9MP				
	Expenditure	%	Development Allocation	%	Private Finance Initiatives	TOTAL	%
Social	69,377	40.8	74,954	37.5	11,915	86,869	39.5
Education & Training	43,729	25.7	41,114	20.6	9,472	50,586	23.0
Health	9,506	5.6	10,710	5.4	878	11,588	5.3
Information & Broadcasting	450	0.3	450	0.2	0	450	0.2
Housing	6,972	4.1	9,947	5.0	1,565	11,512	5.2
Culture, Youth & Sports	1,113	0.7	1,394	0.7	0	1,394	0.6
Local Authorities & Welfare Services	5,942	3.5	9,121	4.6	0	9,121	4.1
Village & Community Development	1,665	1.0	2,218	1.1	0	2,218	1.0

With Knowledge We Serve

Overview

TABLE 11-8

DEVELOPMENT EXPENDITURE AND ALLOCATION FOR EDUCATION AND TRAINING, 2001-2010 (RM million)

Programme	8MP Expenditure	9MP Allocation
Education	37,922.0	40,356.5
Pre-school	215.7	807.3
Primary Education	5,369.3	4,837.3
Secondary Education	8,748.1	6,792.8
Government & Government-aided Schools (Academic)	7,931.2	5,549.1
MARA Junior Science Colleges	433.1	614.5
Government & Government-aided Schools (Technical & Vocational)	383.8	629.2
Tertiary Education	13,403.9	16,069.0
Teacher Education	1,368.1	577.7
Other Educational Support Programmes	8,816.9	11,272.4
Training	4,450.9	4,792.6
Industrial Training	3,930.6	4,103.6
Commercial Training	158.6	179.5
Management Training	361.7	509.5
Total	42,372.9	45,149.1

Source: Economic Planning Unit

With Knowledge We Serve

Background

TABLE 11-4
STUDENT ENROLMENT¹ IN PUBLIC EDUCATION
INSTITUTIONS, 2000-2010

Level of Education	Number of Students			% of Total			Increase (%)	
	2000	2005	2010	2000	2005	2010	8MP	9MP
Pre-school (4-6)	539,469	702,897	784,200	9.8	11.6	11.9	30.3	11.6
Primary	2,907,123	3,044,977	3,195,977	52.6	50.0	48.3	4.7	5.0
Lower Secondary	1,256,772	1,330,229	1,425,231	22.7	21.9	21.6	5.8	7.1
Government & Government-aided Schools	1,251,466	1,322,212	1,412,235					
MARA Junior Science Colleges	5,306	8,017	12,996					
Upper Secondary	707,835	763,618	881,247	12.8	12.6	13.3	7.9	15.4
Government & Government-aided Schools (Academic)	637,292	678,646	774,550					
MARA Junior Science Colleges	10,118	12,145	21,470					
Government & Government-aided Schools (Technical & Vocational)	60,425	72,827	85,227					
Post-secondary	94,544	199,636	277,904	1.7	3.3	4.2	111.2	39.2
Government & Government-aided Schools	48,035	144,194	202,904					
Pre-Diploma & Pre-University Courses	46,509	55,442	75,000					
Teacher Education	23,740	34,672	45,899	0.4	0.6	0.7	46.0	32.4
Total	5,529,483	6,076,029	6,610,458	100.0	100.0	100.0	9.9	8.8

Source: Ministry of Education

Notes: ¹ Enrolment refers to total student population in that particular year.

² Includes private pre-schools.

With Knowledge We Serve

Overview



The data: Household Expenditure Survey 2004

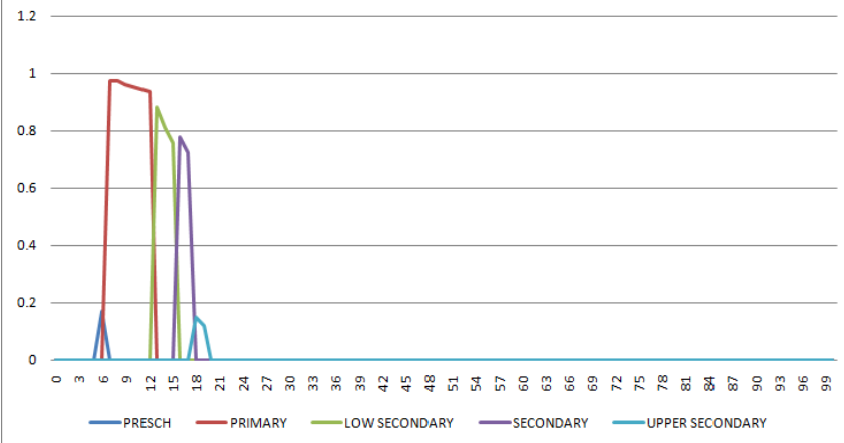
- Collected by the Dept of Statistics Malaysia every 5 years
- Objective:
 - To obtain information about the household consumption level and pattern for goods and services which will be used in calculating CPI
 - To update the CPI weight
- Data collected between June 2004 and May 2005 to capture seasonal variation
- Total number of Household surveyed : 18,218 (available for use in NTA 14,084)
- The definition of household consumption expenditure used is inline with the UN's National Account System

With Knowledge We Serve

Enrollment



Student Enrollment Rate in Malaysia -- 2004

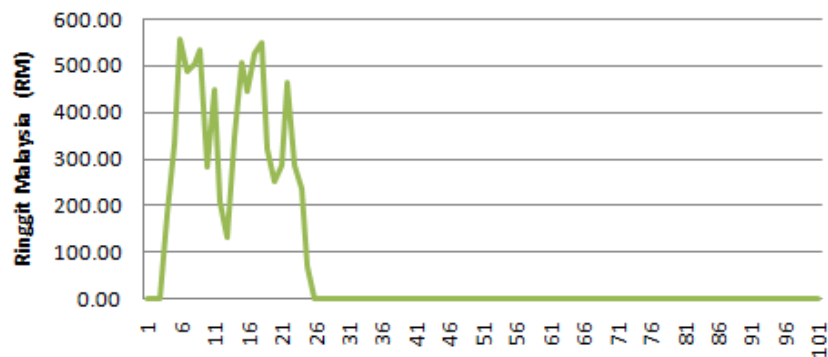


With Knowledge We Serve

Private Consumption



Malaysia: Private Consumption on Education, 2004 (Per Capita)

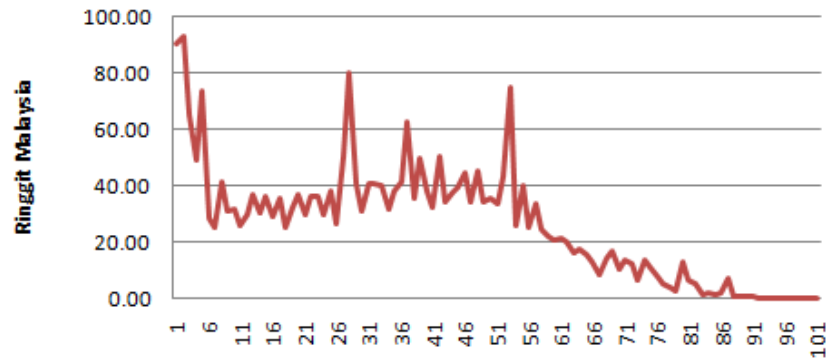


With Knowledge We Serve

Private Consumption



Malaysia: Private Consumption on Health, 2004 (Per Capita)

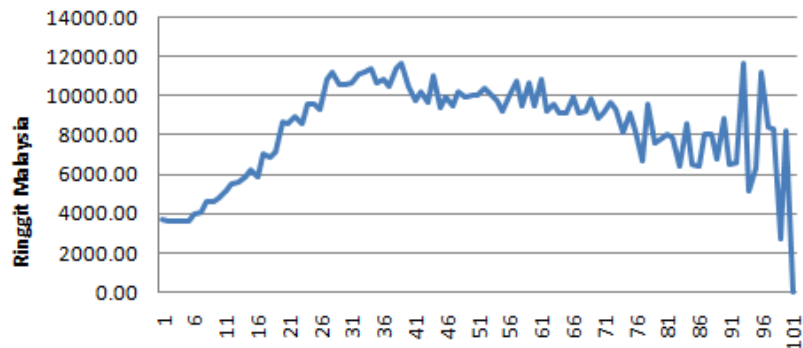


With Knowledge We Serve

Private Consumption



Malaysia: Other Private Consumption, 2004 (Per Capita)

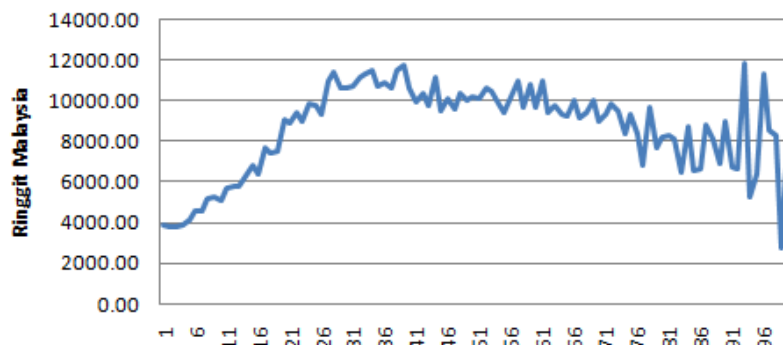


With Knowledge We Serve

Private Consumption



Malaysia: Total Consumption, 2004 (Per Capita)



With Knowledge We Serve

Macro control



Information from the National Income Account

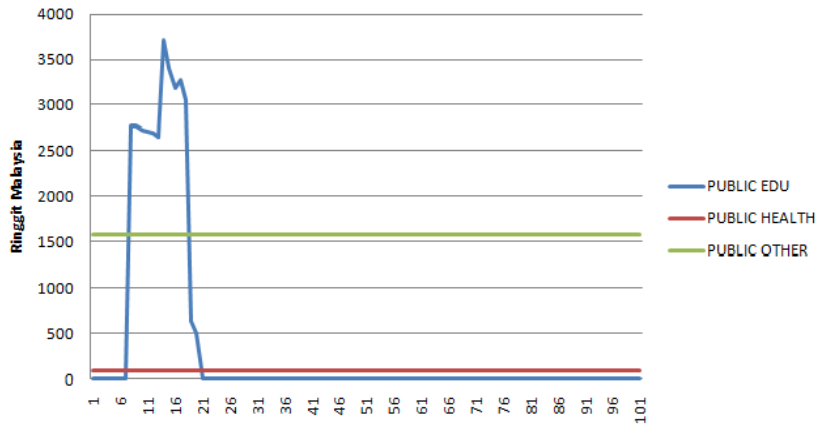
Final Consumption	268,206
Public consumption	59,635
•Public education	17,681
•Public health	2352
•Other public consumptions	39,602
Private Consumption	208,571
•Estimated from the HES 2004	

With Knowledge We Serve

Public Consumption



Malaysia: Public Consumption, 2004 (Per capita)

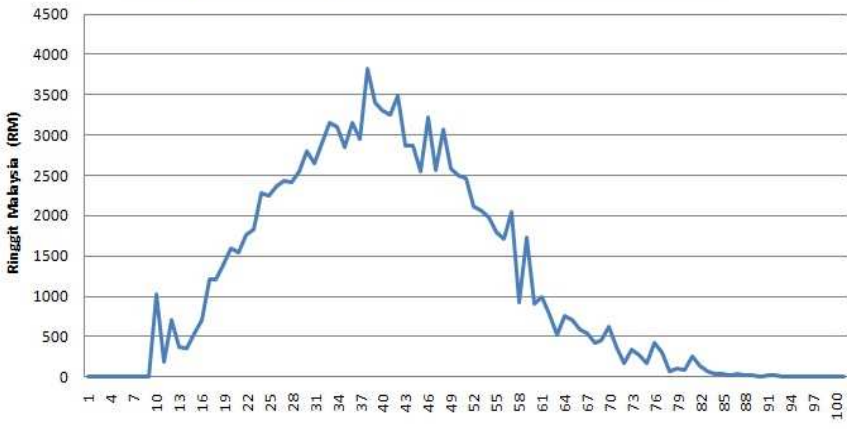


With Knowledge We Serve

Labor Income



Malaysia: Employment Wage, 2004 (Per Capita)

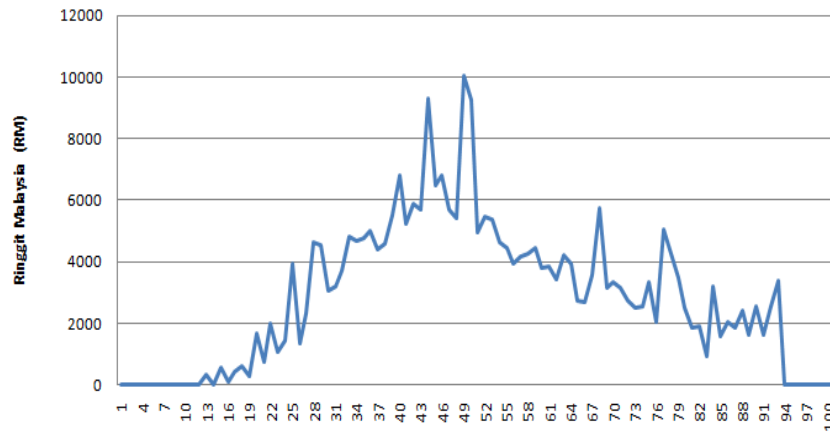


With Knowledge We Serve

Labor Income



Malaysia: Self Employment Wage, 2004 (Per Capita)

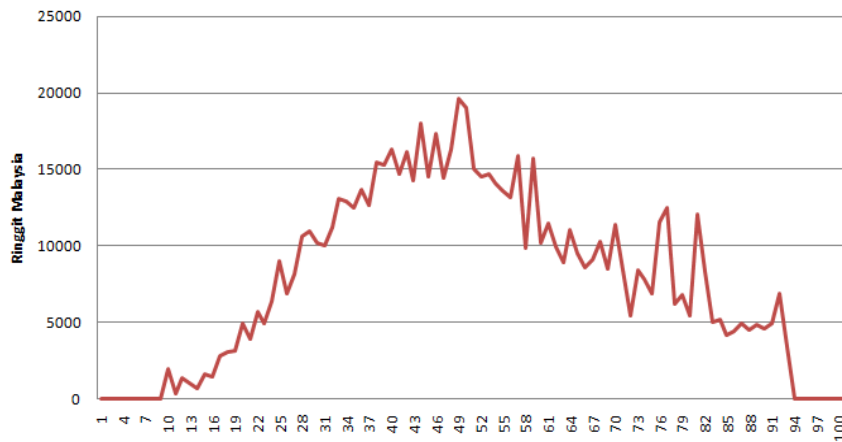


With Knowledge We Serve

Labor Income



Malaysia: Total Labor Income, 2004 (Per Capita)



With Knowledge We Serve

Macro control



Information from the National Income Account

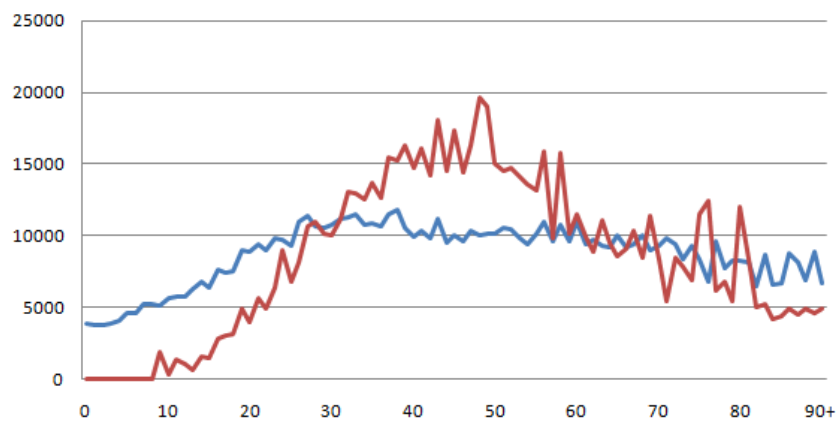
EMPLOYEE COMPENSATION	
	118,850 Million
•Non Financial Corporation	69,441 Million
•Financial Corporation	9,337 Million
•Government	36,397 Million
•Households and non profit institutions serving household	3,675
MIXED INCOME	
	43,652
2/3Mixed Income	29,101

With Knowledge We Serve

Life cycle graph

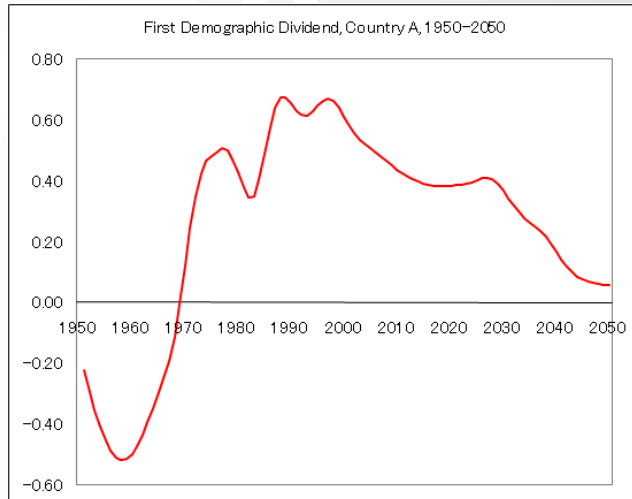


Per capita consumption and labor income



With Knowledge We Serve

Demographic Dividend



With Knowledge We Serve

Limitation & next move



1. UN Population data
2. Enrollment rates are not available by each age group and by education – will check again
3. Macro control for labor income:
 - a. Obtained by summing up all sectors – will have to check again
4. Macro control for consumption
 - a. Values on details items of government spending – i.e. education, health and total health will be verified
 - b. Detail items of total private consumption – i.e. health, education and other consumption were estimated from the HES – will check again

With Knowledge We Serve



THANK YOU

With Knowledge We Serve