

NTA Training Workshop
Hua Hin, 17-25 December 2010

Country Presentation

Cambodia Team

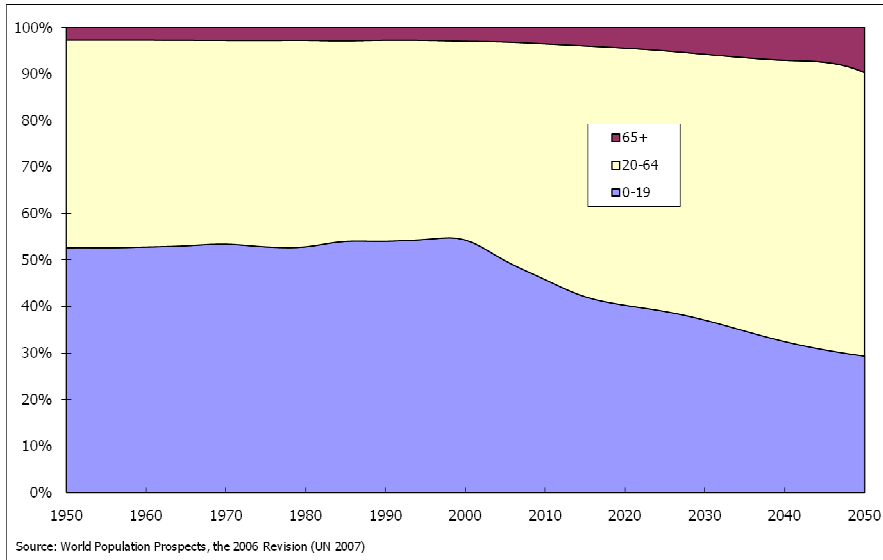
- Mr. Nor Vanndy
- Mr. Theng Pagnathun
- Mr. Poch Sovannndy
- Mr. Net Neath

25 December 2010

Background

- Population: 13.4M (Census 2008)
- Annual Growth Rate: 1.54 %
- Total Fertility Rate (per woman) 3.11
- Population Density: 75Person/Km²
- Age 0-14: 33.7%
- Age 15-64: 62.04%
- Age 65 and above: 4.27%
- Life Expectancy at birth: Male: 60; Female: 64.3

Population age structure of Cambodia, 1950-2050



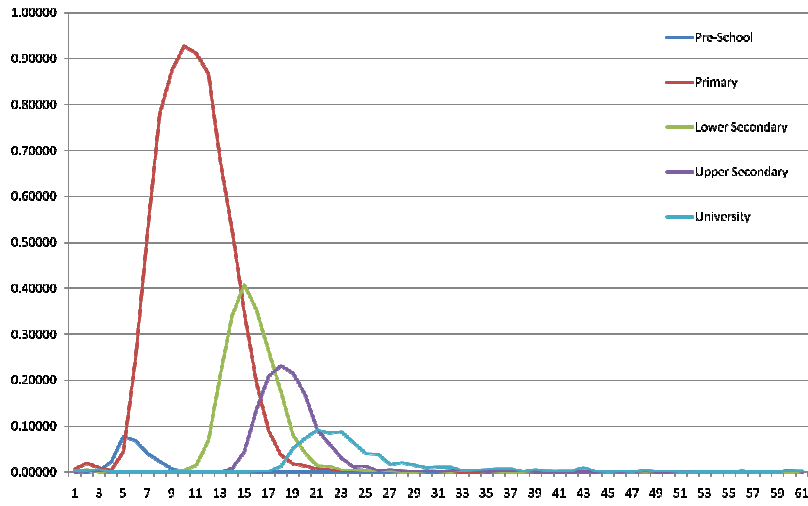
3

Sources of data

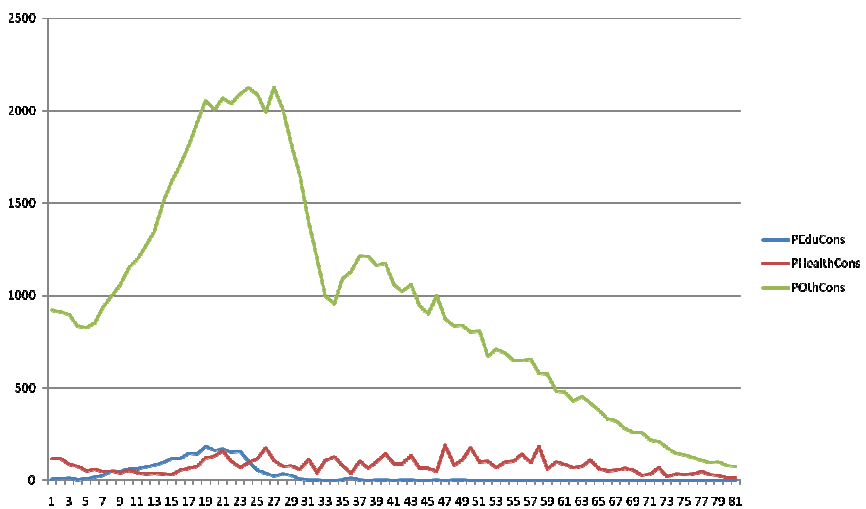
- Census 1998, 2008
- Cambodian Socio-Economic Survey (CSES) 1993/94, 1997, 1999, 2004, 2007, 2009
- Govt. Finance Statistics 2009, MEF
- MTR Report of the Education Strategic Plan and Education Sector Support Program 2006-2010 Implementation, MOEYS 2009
- System National Acct. 2008, Supply Use Table 2005

4

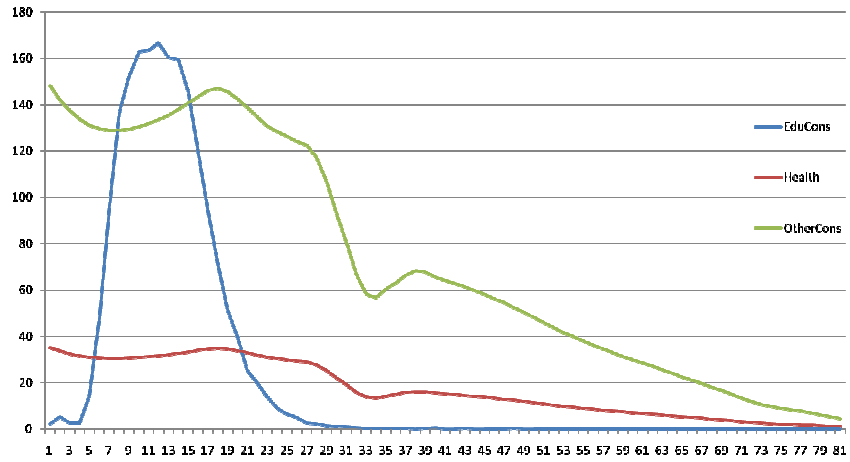
Enrollment Rate by age, levels of Education



Private Consumption Per Capita by age for Education, Health, Other (000 KHR)

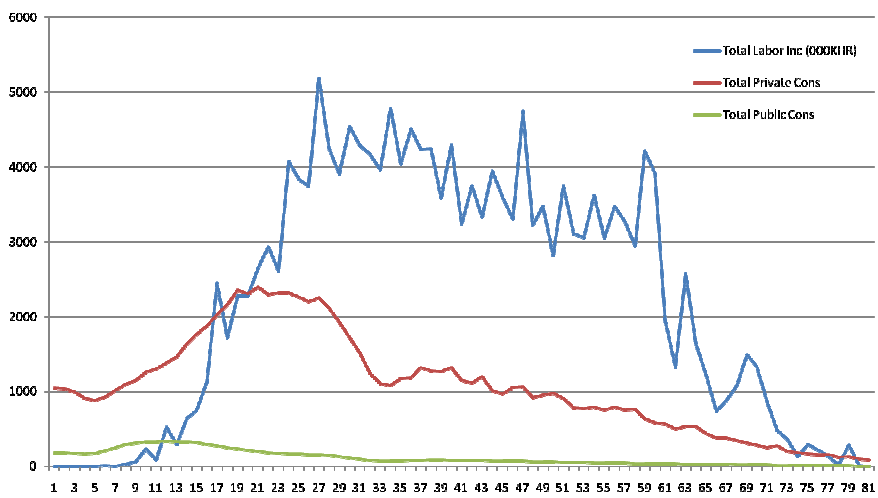


Public Consumption Per Capita by age for Education, Health, Other (in 000 KHR)



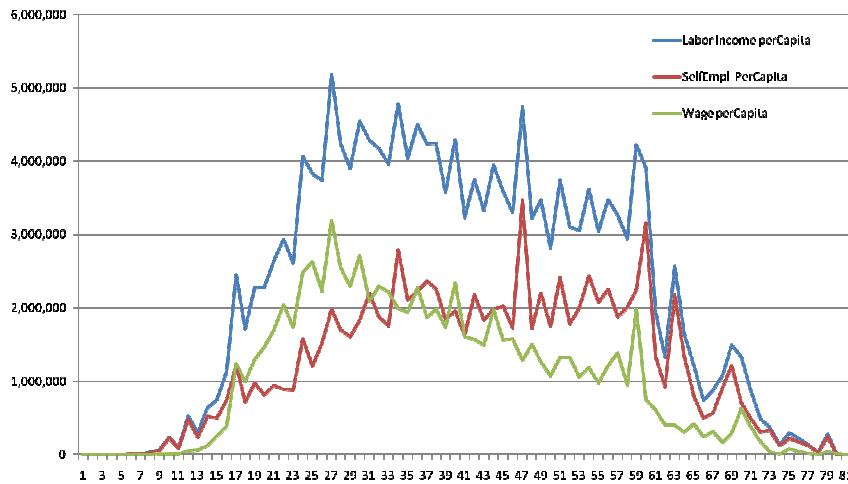
7

Labor Income, Private & Public Consumption Per Capita by age (in 000 KHR)



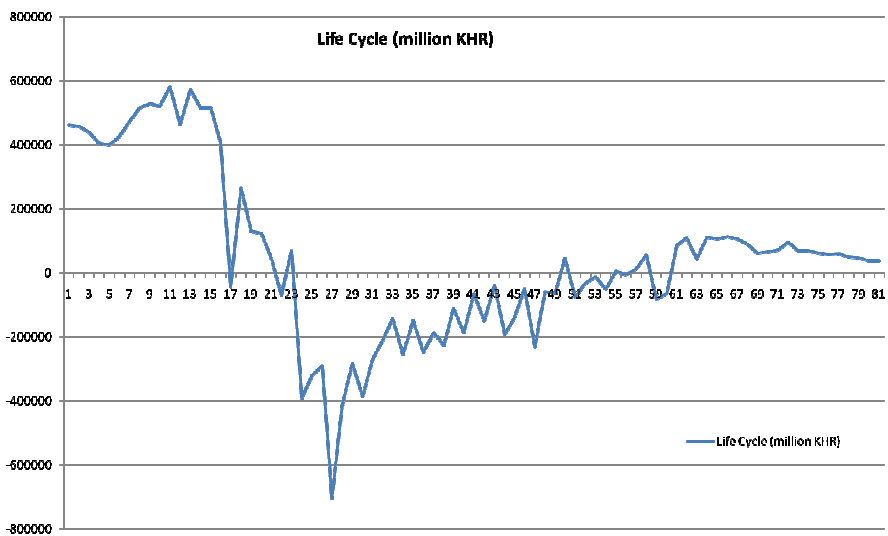
8

Labor force Incomes Per Capita (Wage, Self-employed in KHR)



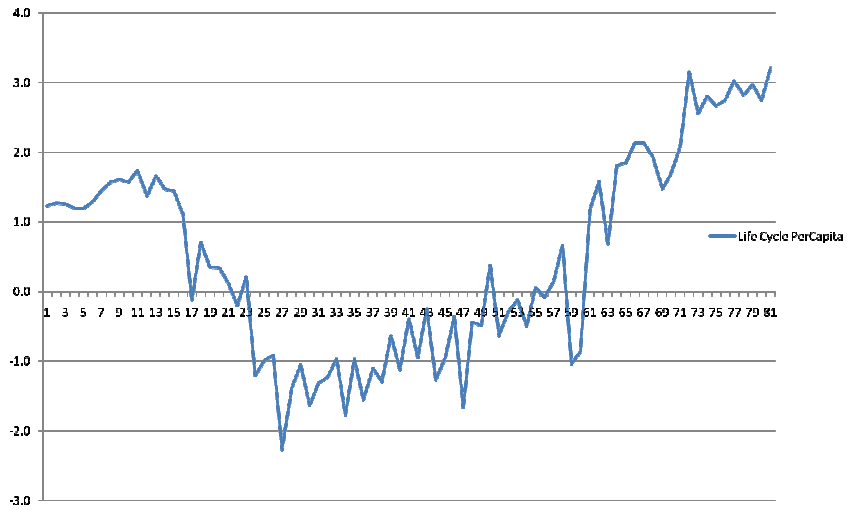
9

Life Cycle, total



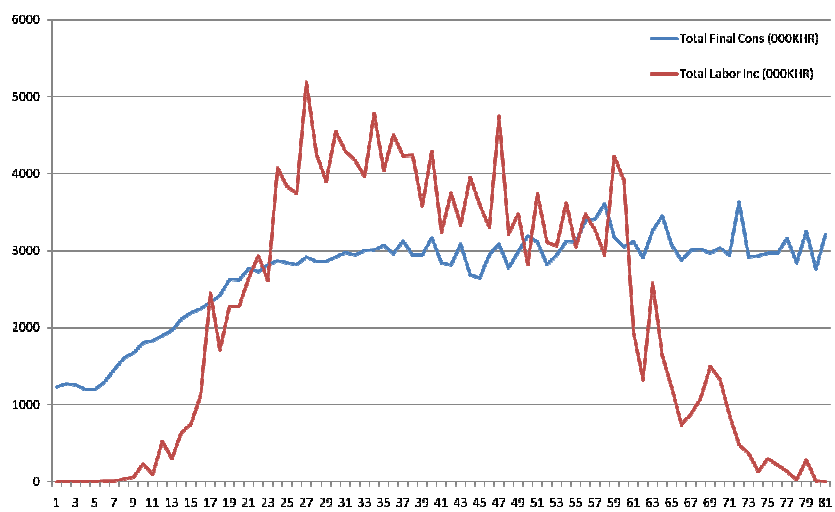
10

Life Cycle per Capita



11

Demographic dividend (Per capita consumption and labor income)



12

Policy Response

- Demographic changes make economic growth in Cambodia due to the proportion of working age group increase.
- However, the labor income in Cambodia is still quite low.
- The increasing productivity through human capital investment is very importance.
- Encourage capital accumulation during working ages to support retirement consumption.

13

Thank you !

14