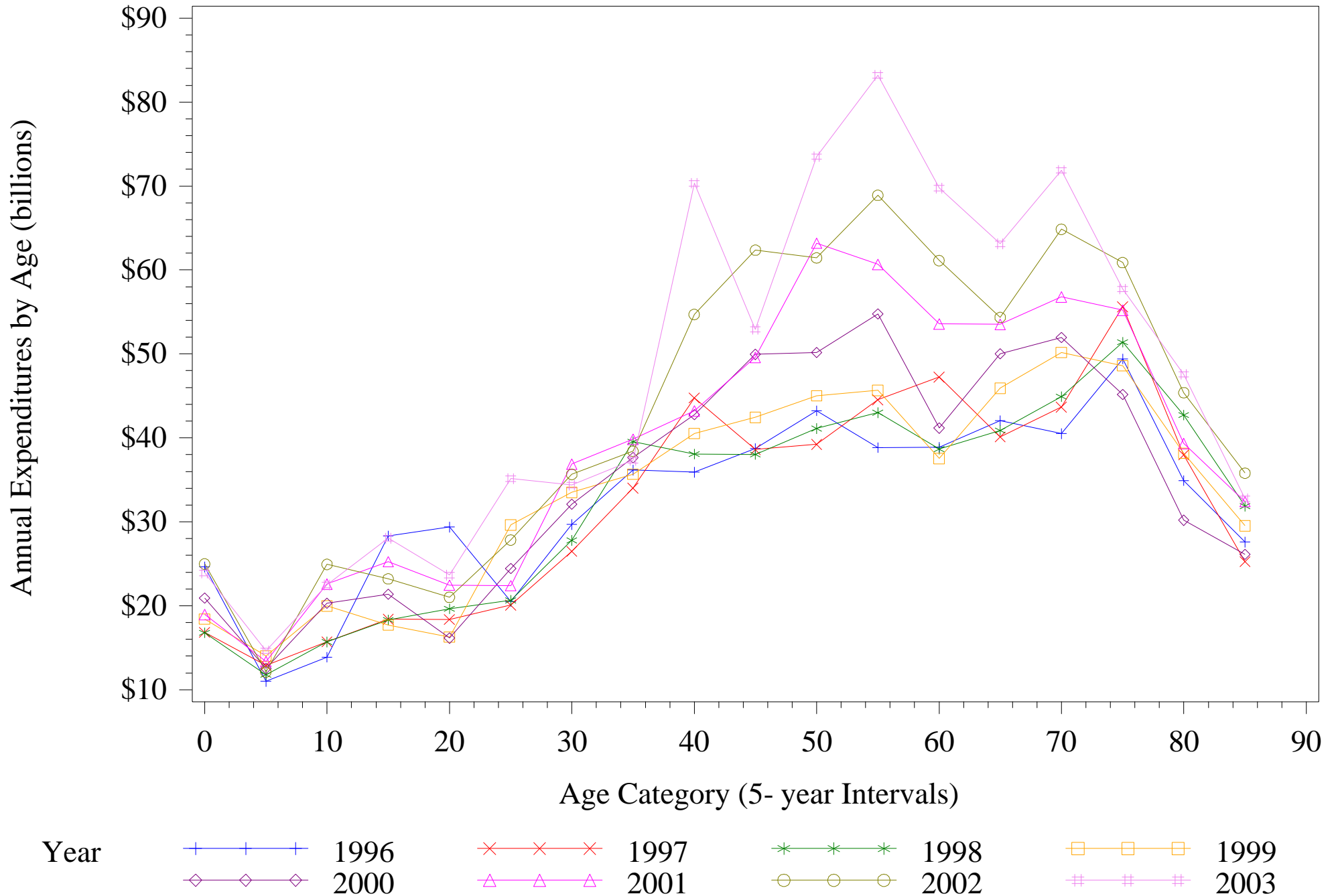
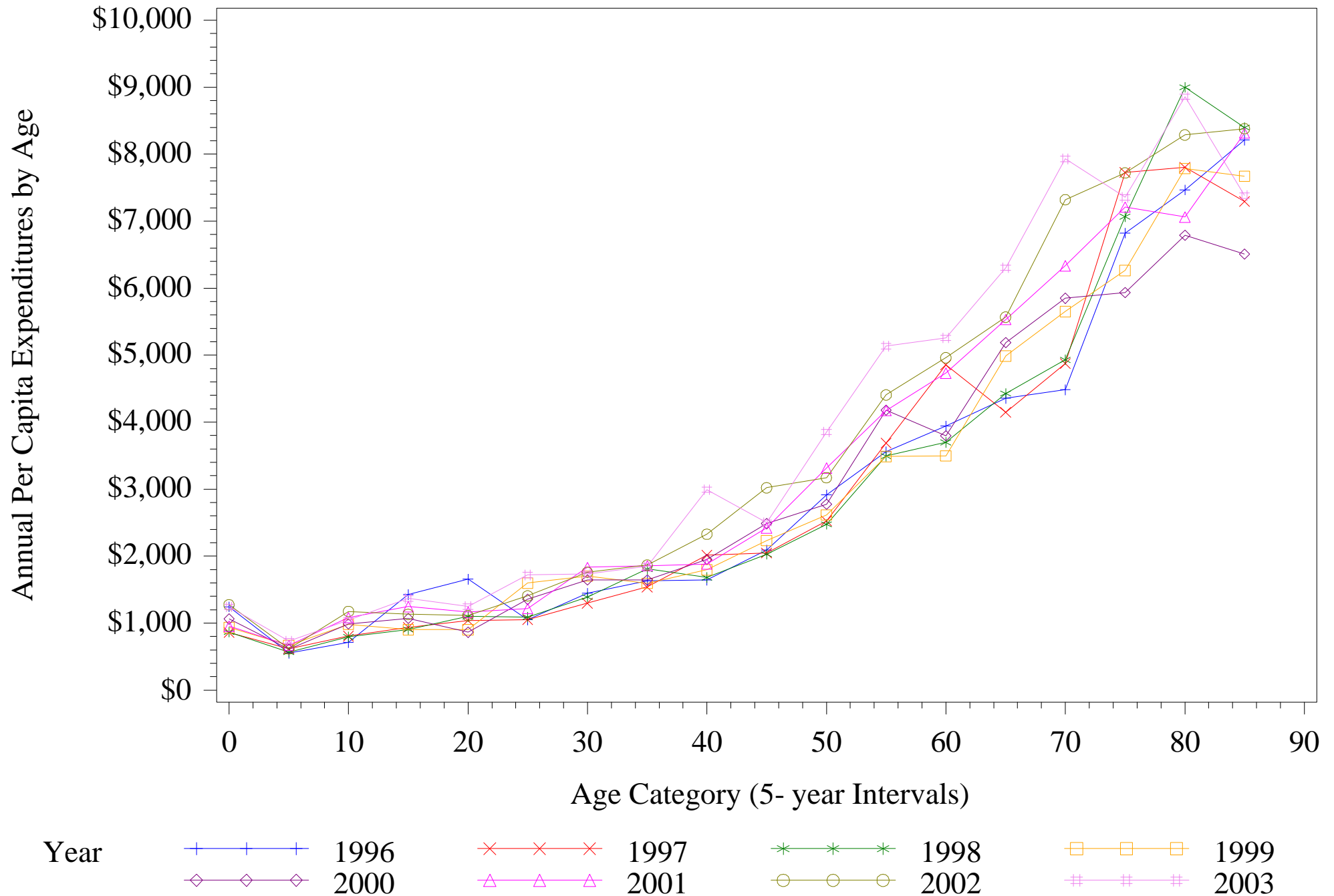


# Annual PHC Expenditures by Age: 1996-2003



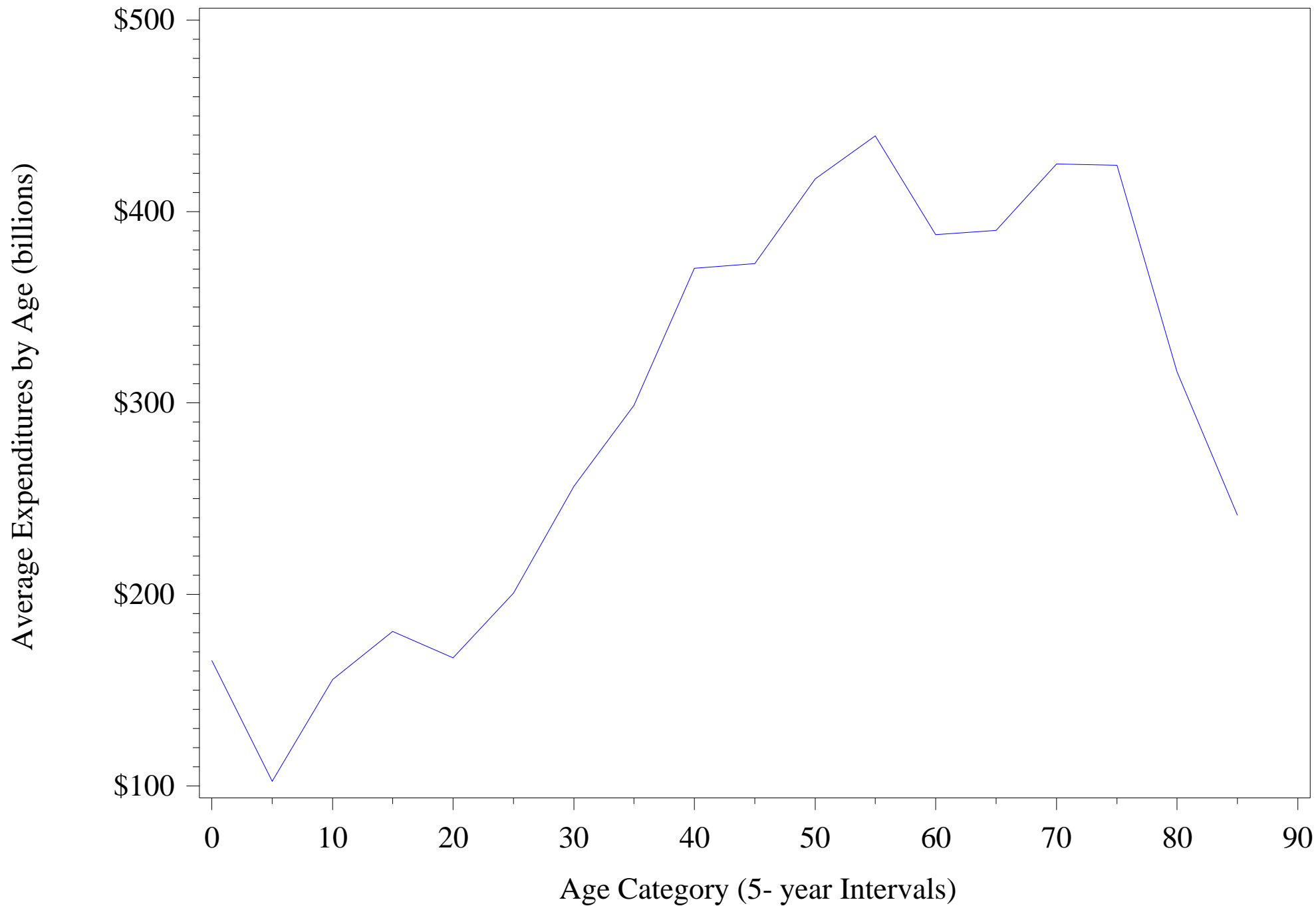
## Per Capita PHC Expenditures by Age: 1996-2003



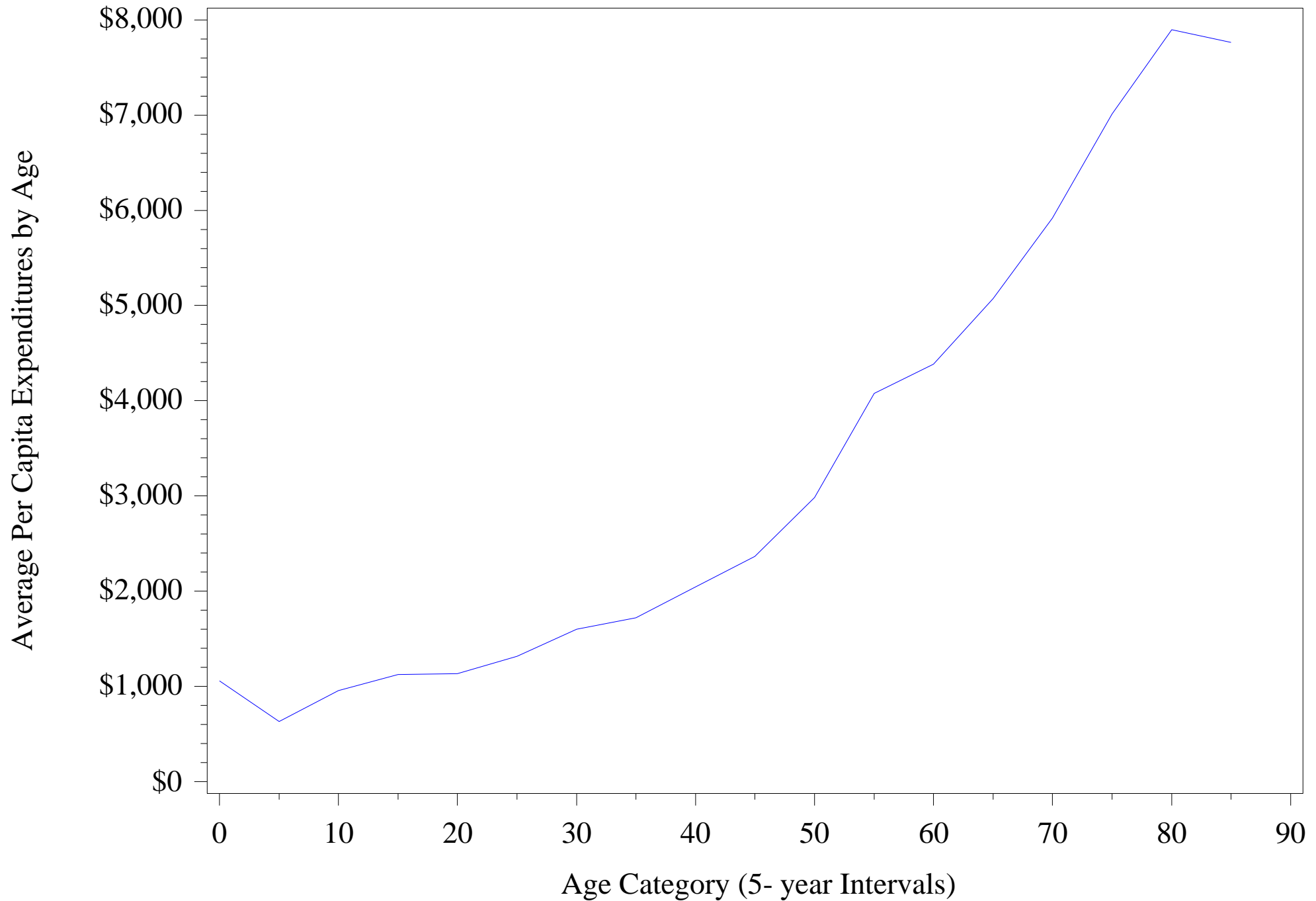
Source: MEPS (2000 dollars)

## Preliminary

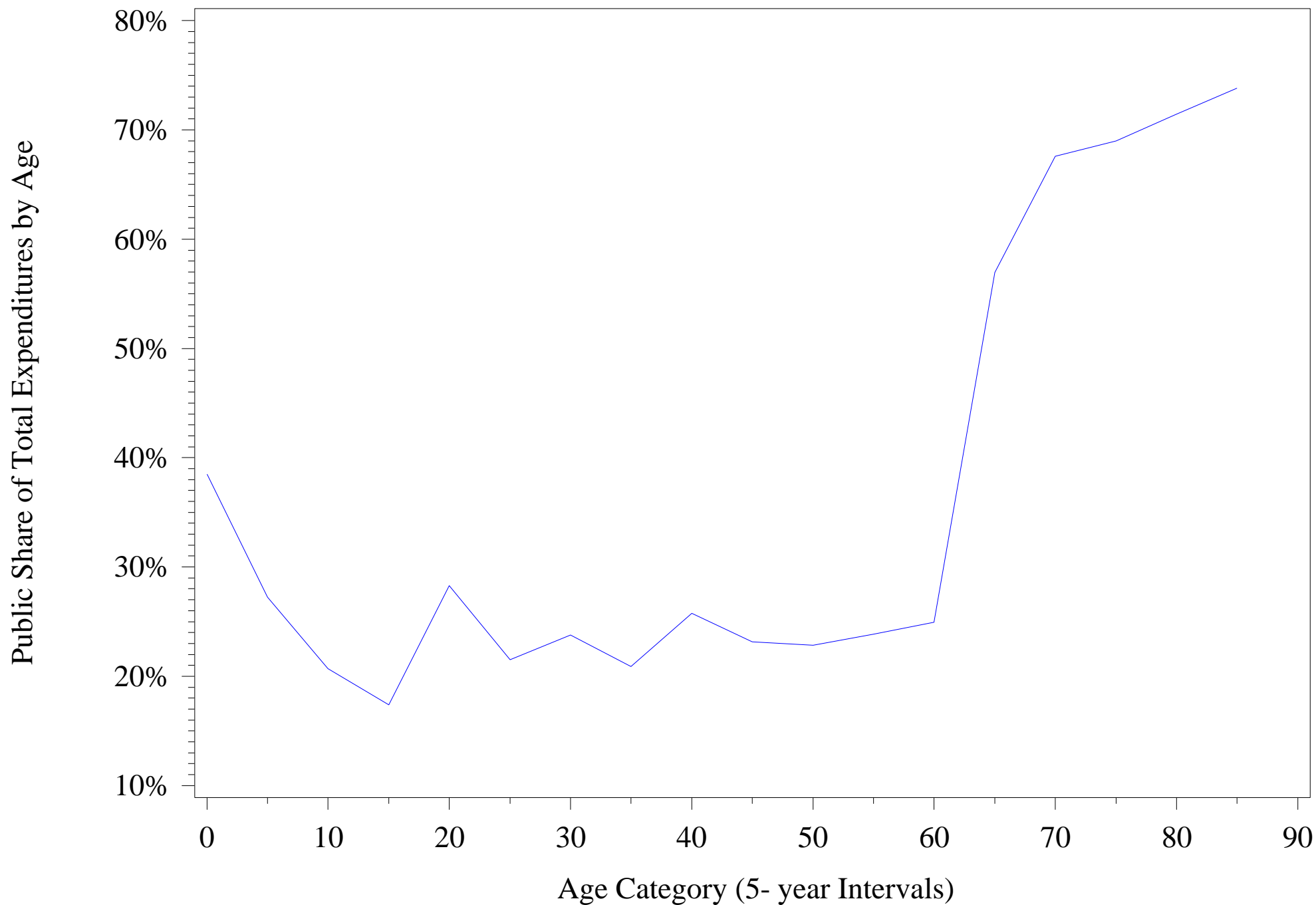
# Average Annual PHC Expenditures by Age: 1996-2003



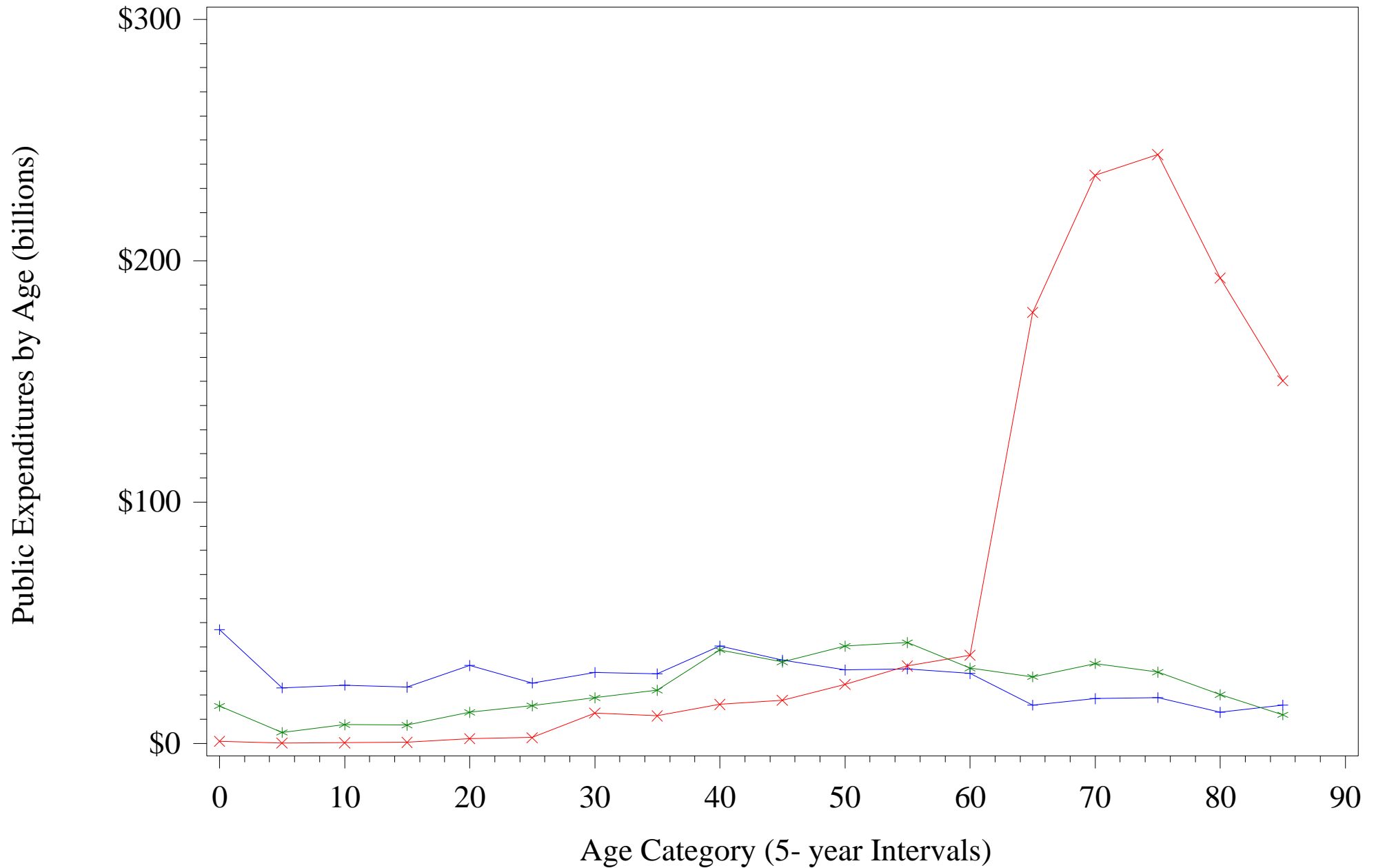
# Average Per Capita PHC Expenditures by Age: 1996-2003



# Public Share of Total PHC Expenditures by Age: 1996-2003

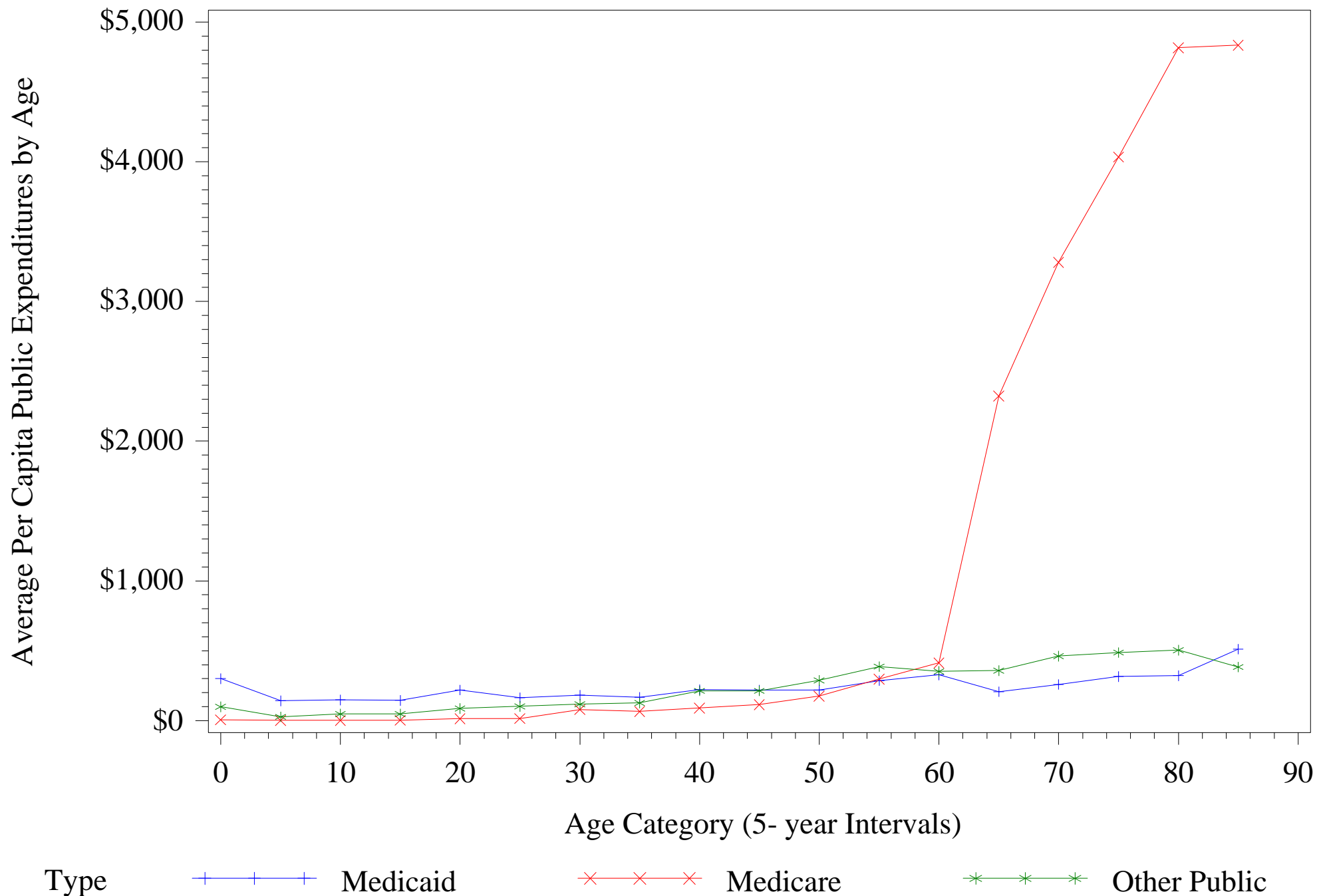


# Public PHC Expenditures by Age: 1996-2003

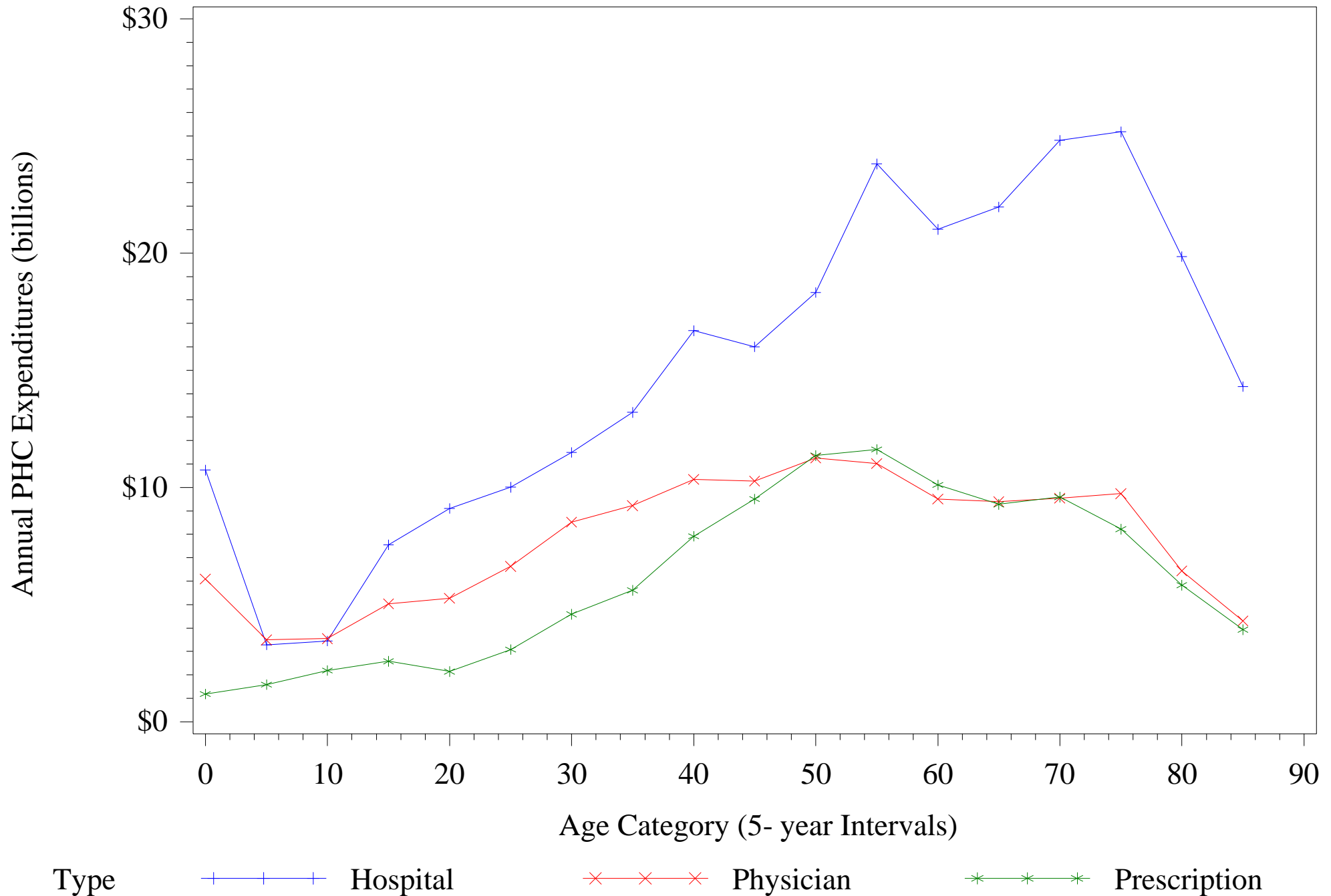


Type      +-----+      Medicaid      x-----x      Medicare      \*-----\*      Other Public

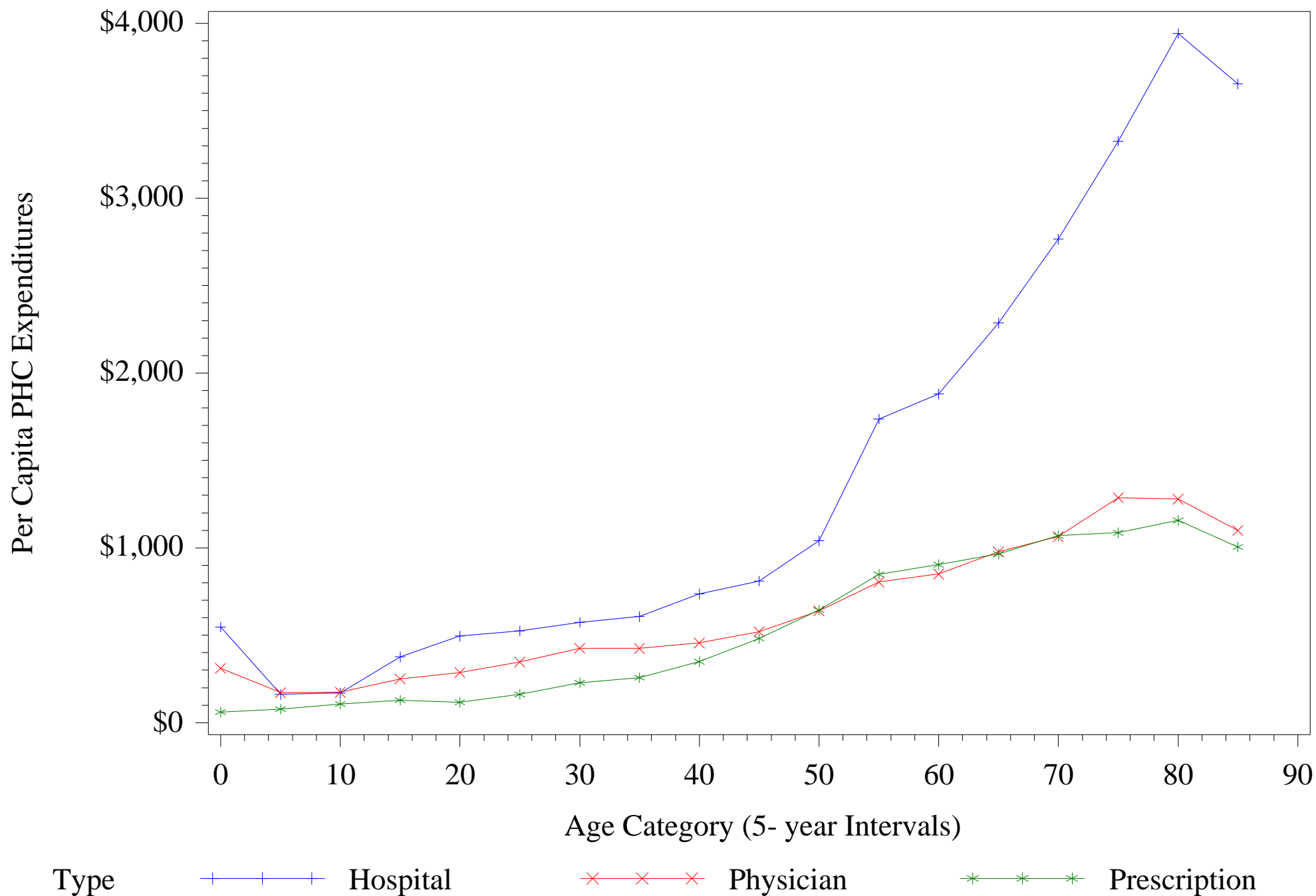
# Average Per Capita Public PHC Expenditures by Age: 1996-2003



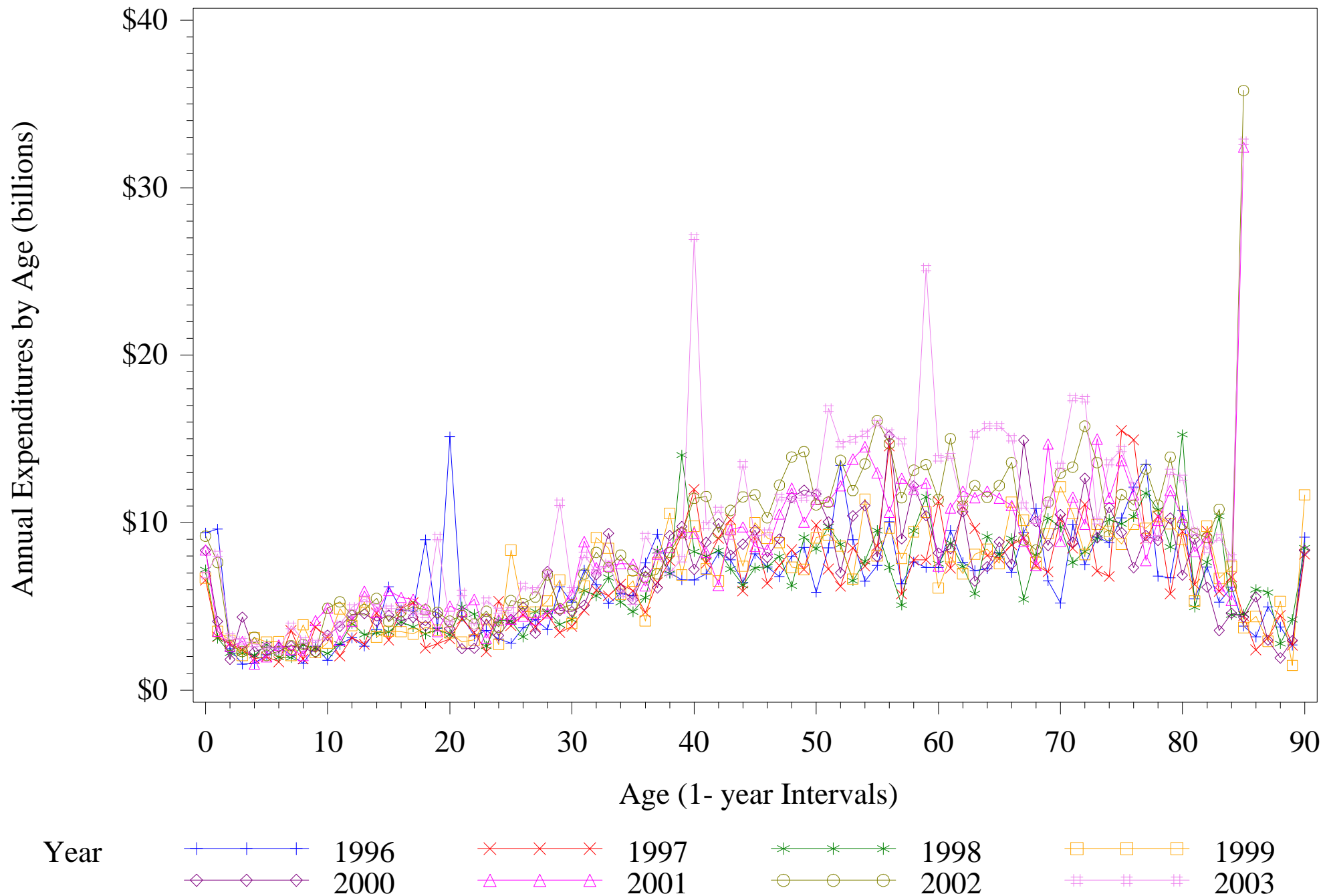
# Average Annual PHC Expenditures by Type of Service by Age: 1996-2003



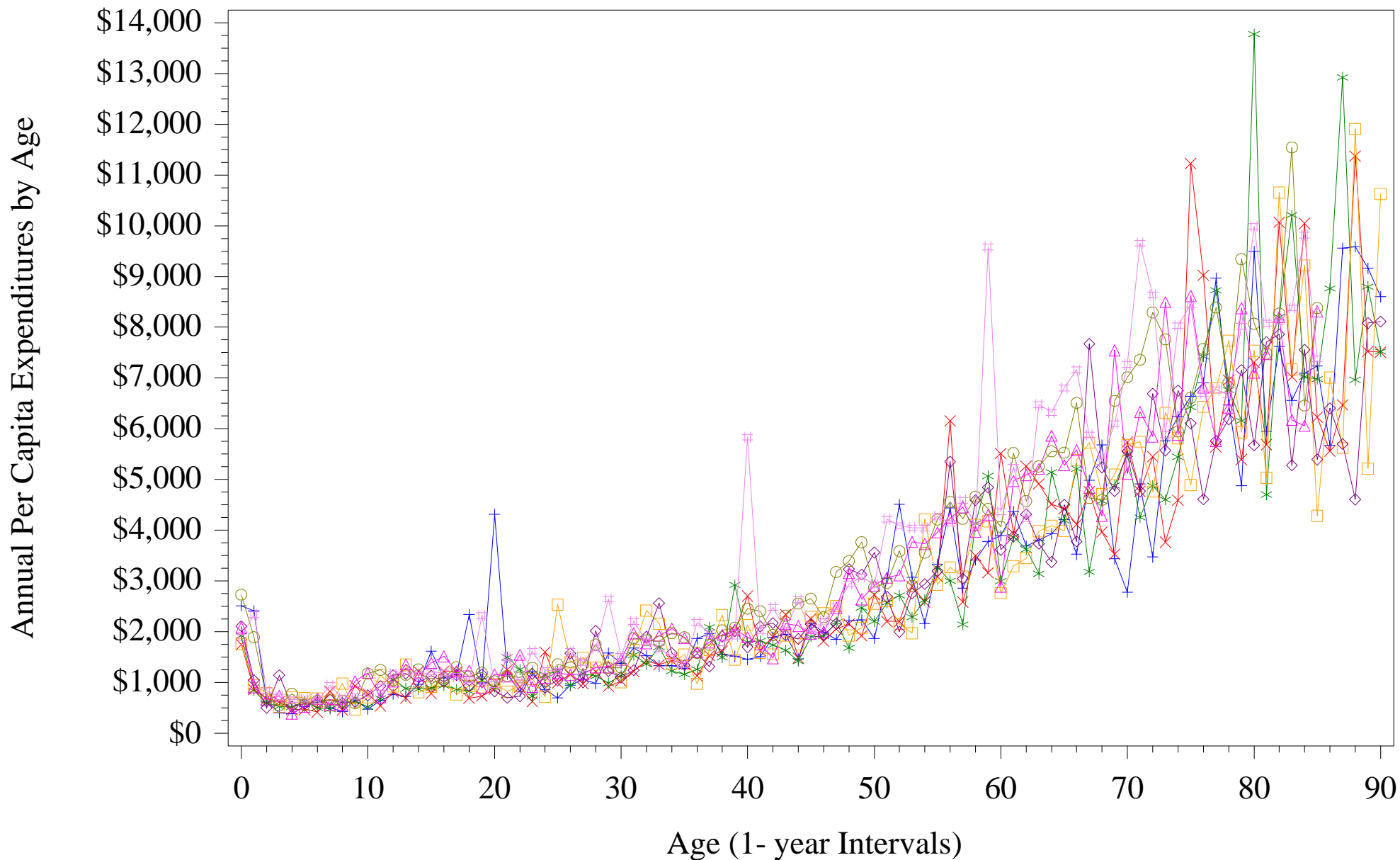
# Average Per Capita PHC Expenditures by Type of Service by Age: 1996-2003



# Annual PHC Expenditures by Age: 1996-2003

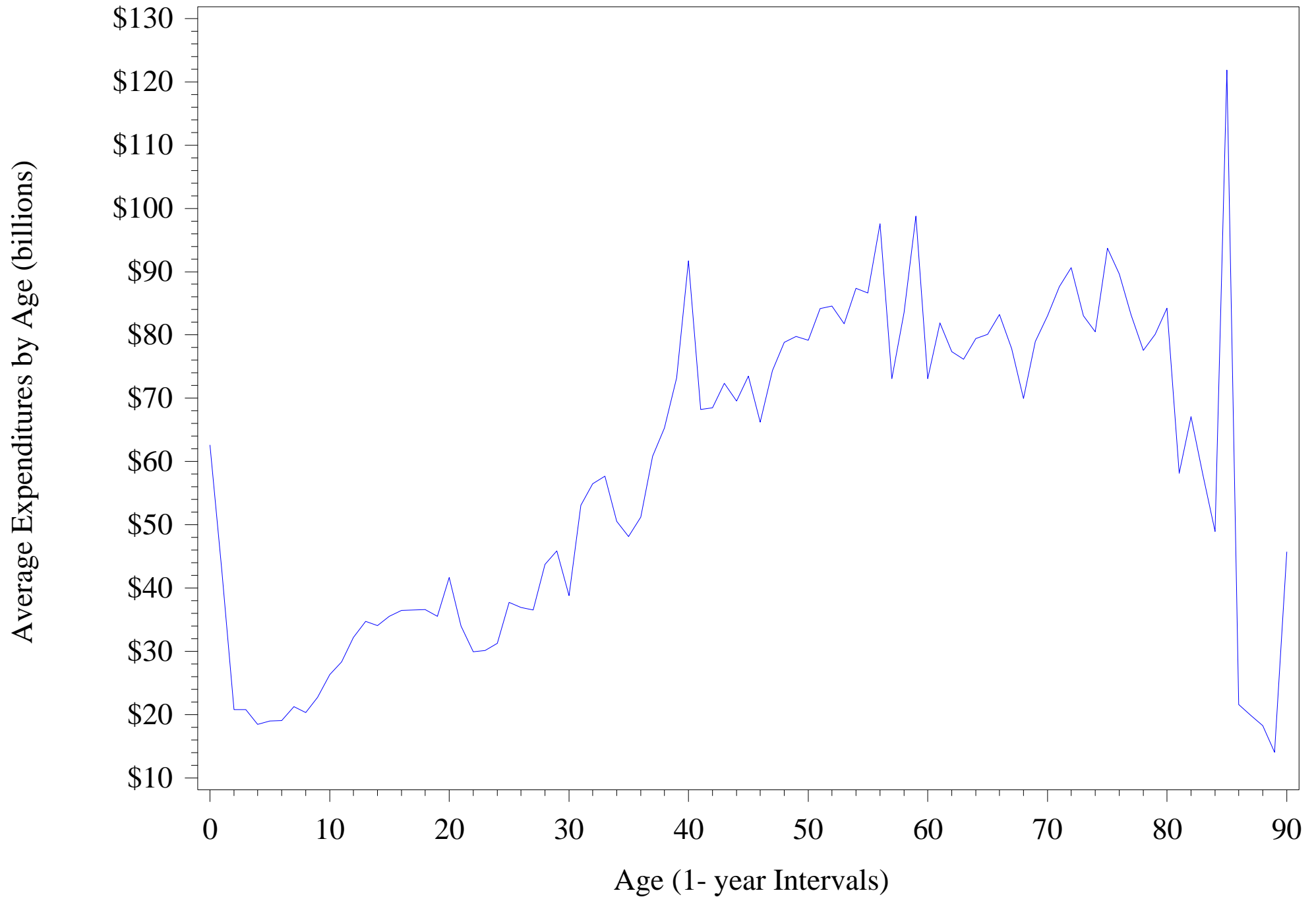


# Per Capita PHC Expenditures by Age: 1996-2003

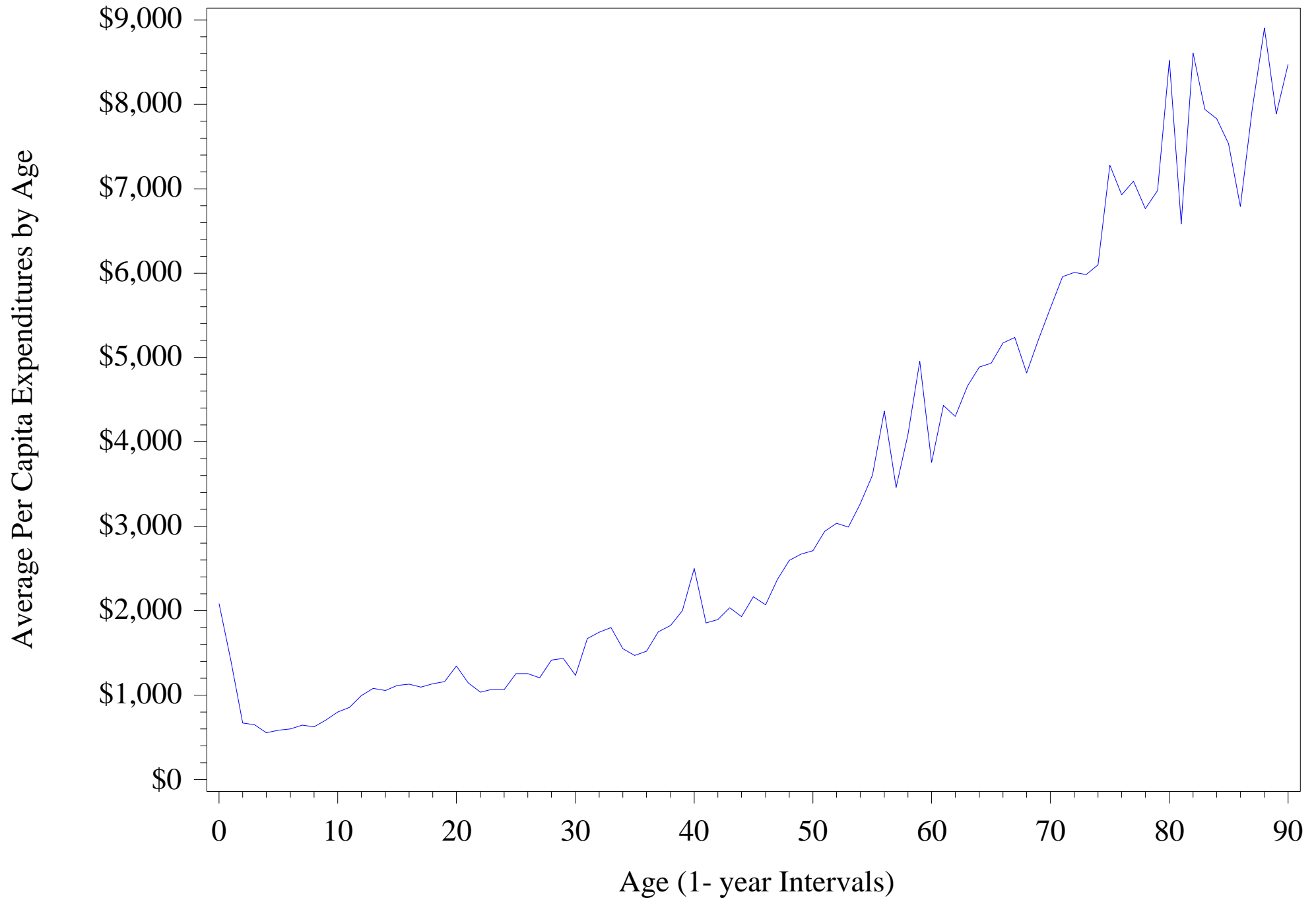


Year	1996	1997	1998	1999
	2000	2001	2002	2003

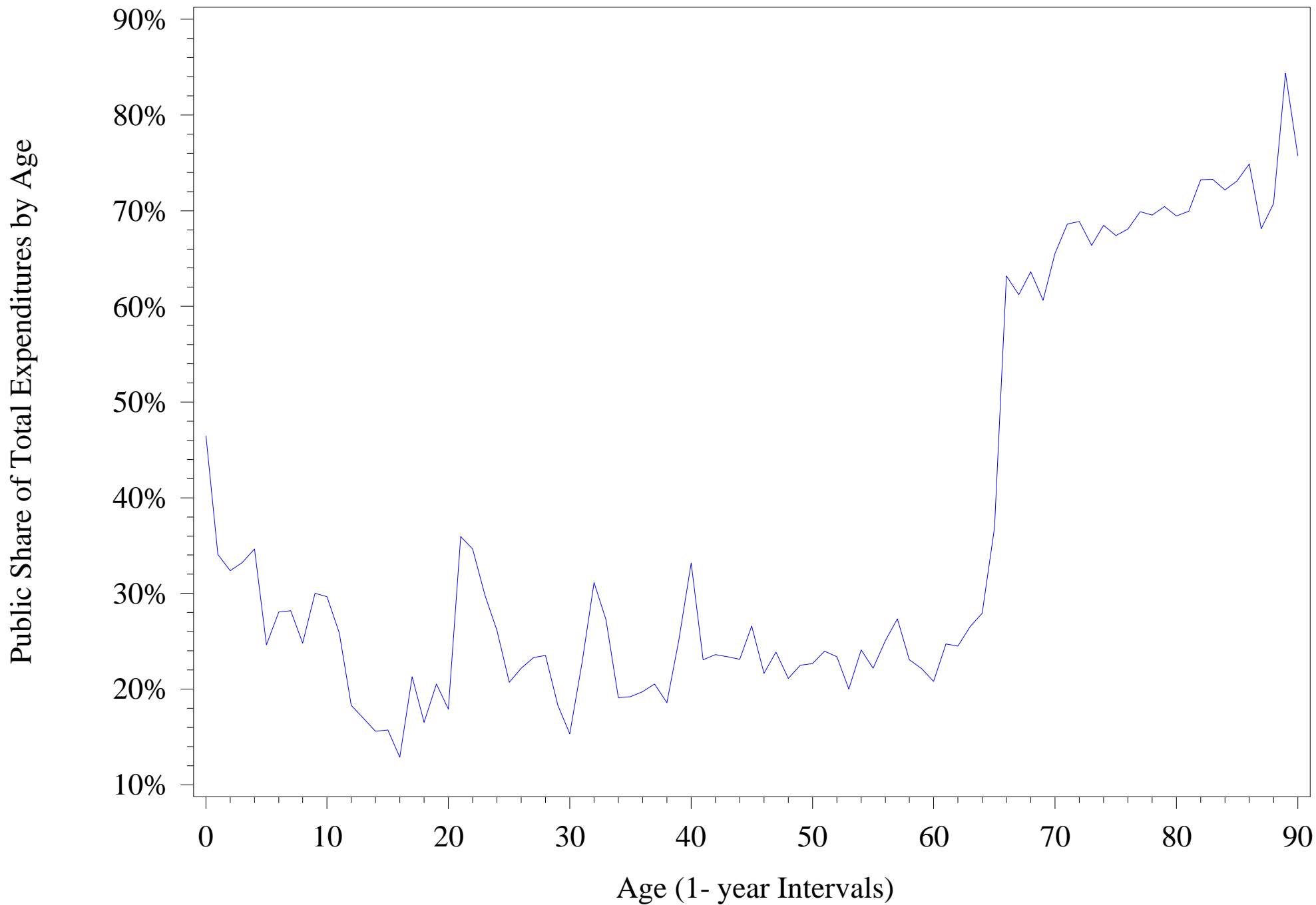
# Average Annual PHC Expenditures by Age: 1996-2003



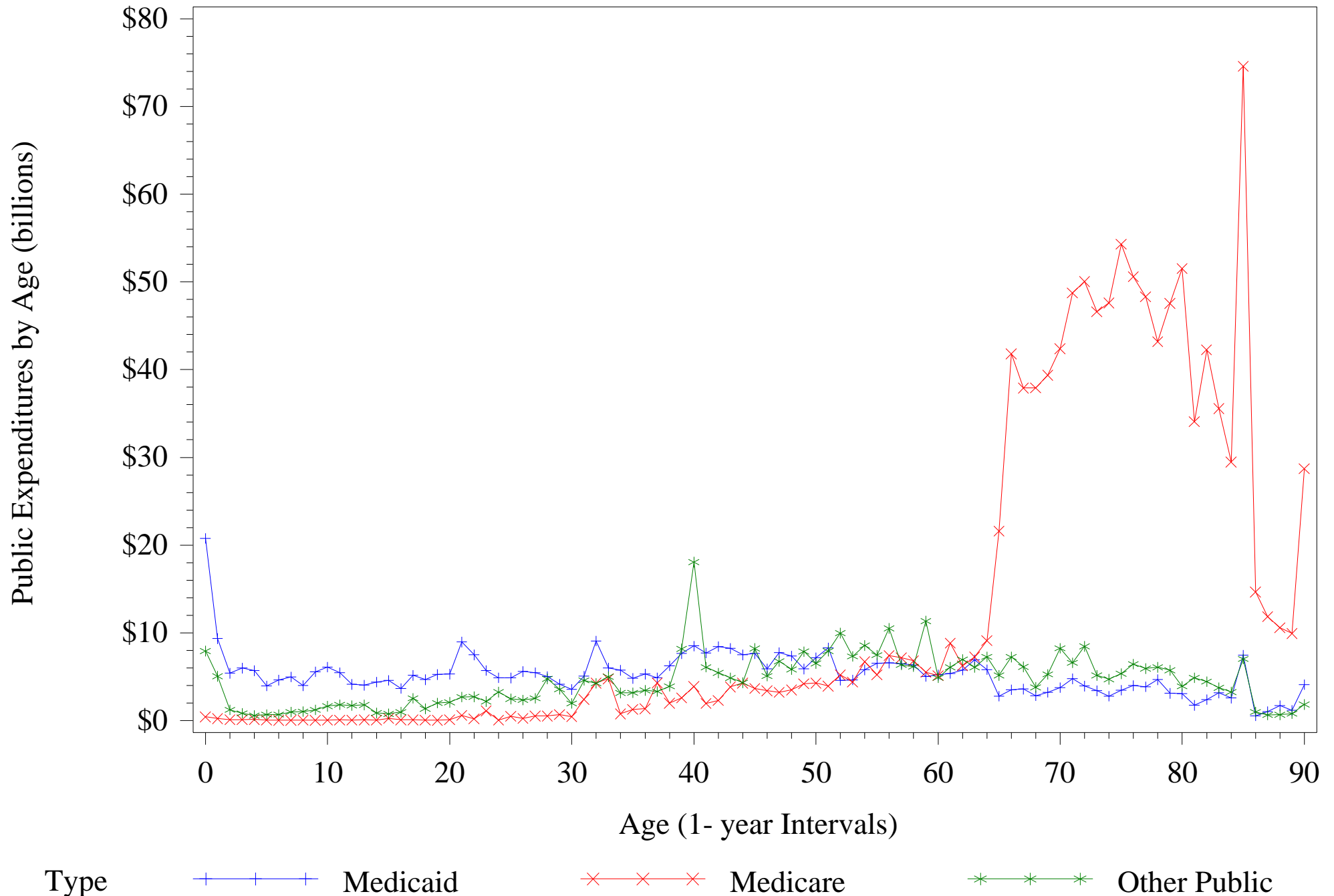
# Average Per Capita PHC Expenditures by Age: 1996-2003



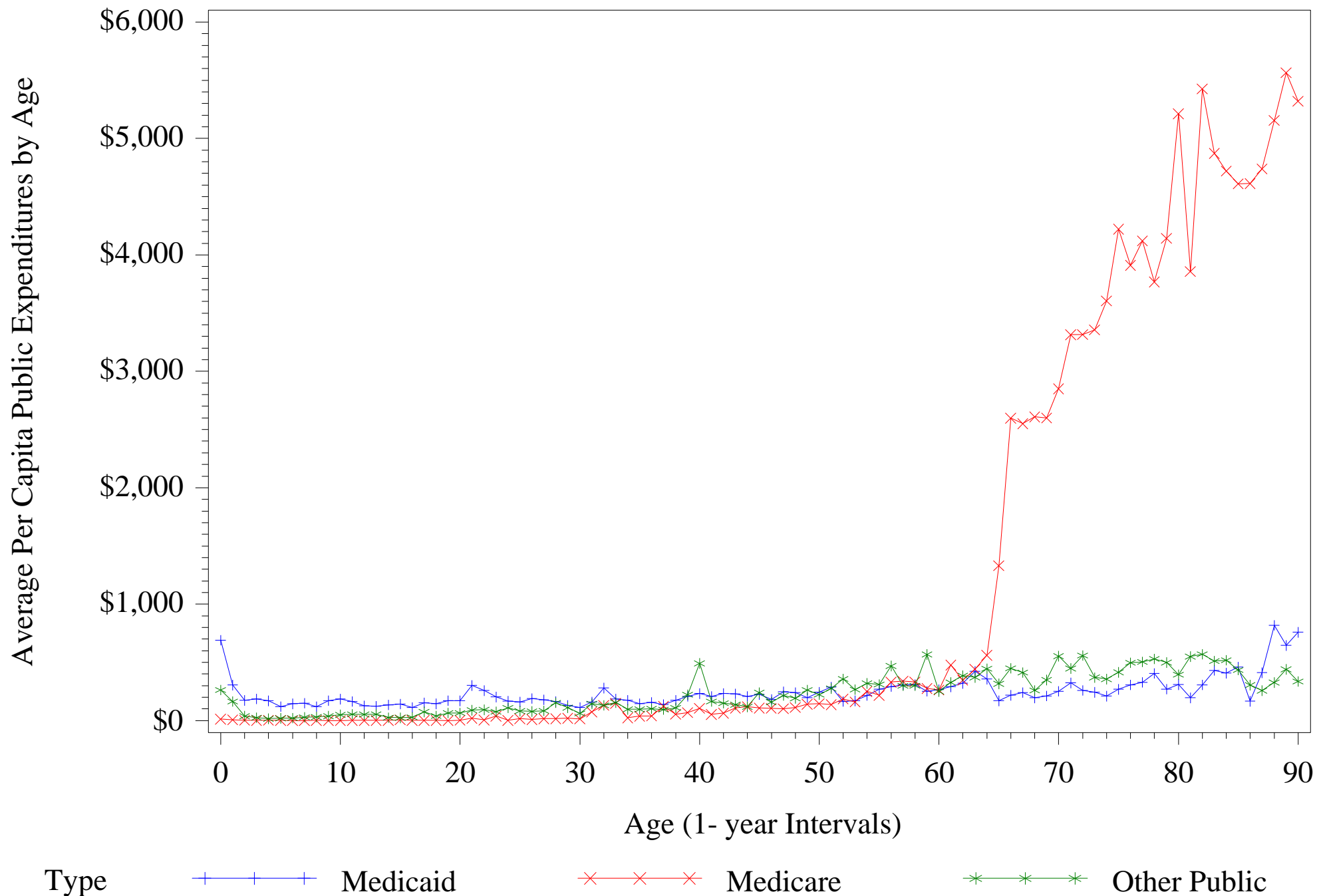
# Public Share of Total PHC Expenditures by Age: 1996-2003



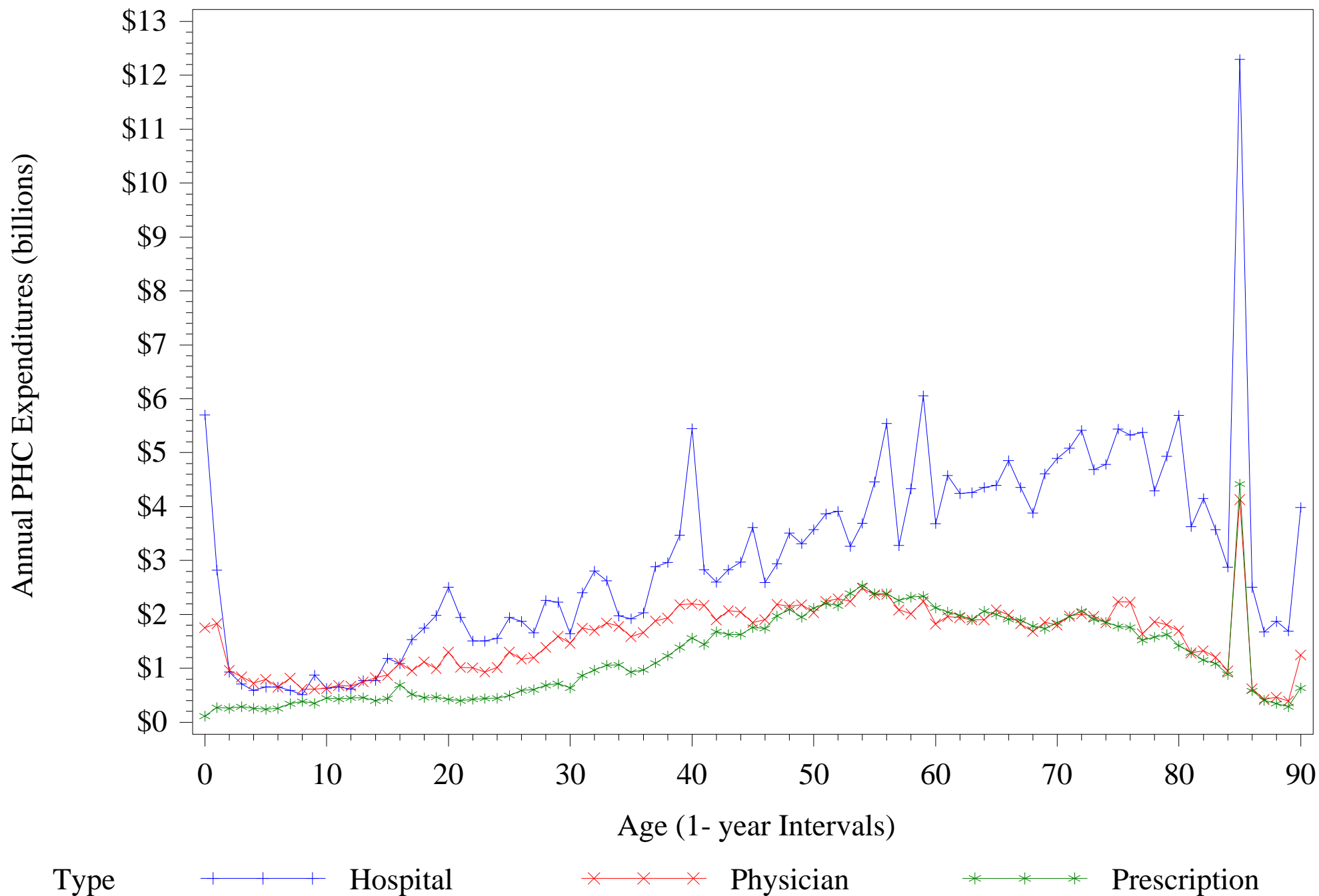
# Public PHC Expenditures by Age: 1996-2003



# Average Per Capita Public PHC Expenditures by Age: 1996-2003



# Average Annual PHC Expenditures by Type of Service by Age: 1996-2003



# Average Per Capita PHC Expenditures by Type of Service by Age: 1996-2003

