

# Tenth Meeting of Working Group on Macroeconomic Aspects of Intergenerational Transfer

National School of Development, Peking University, Beijing, China  
10-14 November 2014

## Can We Measure Time Consumption? An Analysis for European Countries

**Marina Zannella**

Wittgenstein Centre for Demography and Human Capital  
(IIASA, VID/OAW, WU), Vienna Institute of Demography

**agenta**

Ageing Europe – An Application of  
National Transfer Accounts for Explaining  
and Projecting Trends in Public Finances





# NTTA Research So Far...

- A. **Equal shares:** time consumption is independent by age
- B. **Regression:** time consumption for household  $j$  ( $C_j$ ) is a linear function of the number of its components ( $N_j$ ) by age  $x$



keep in mind the nature of the activity:

$$C_j = \sum_{x=a}^b \beta(x) \cdot N_j(x)$$

C. ?

...Does Time Consumption Loose its Invisible Powers in Some Cases?



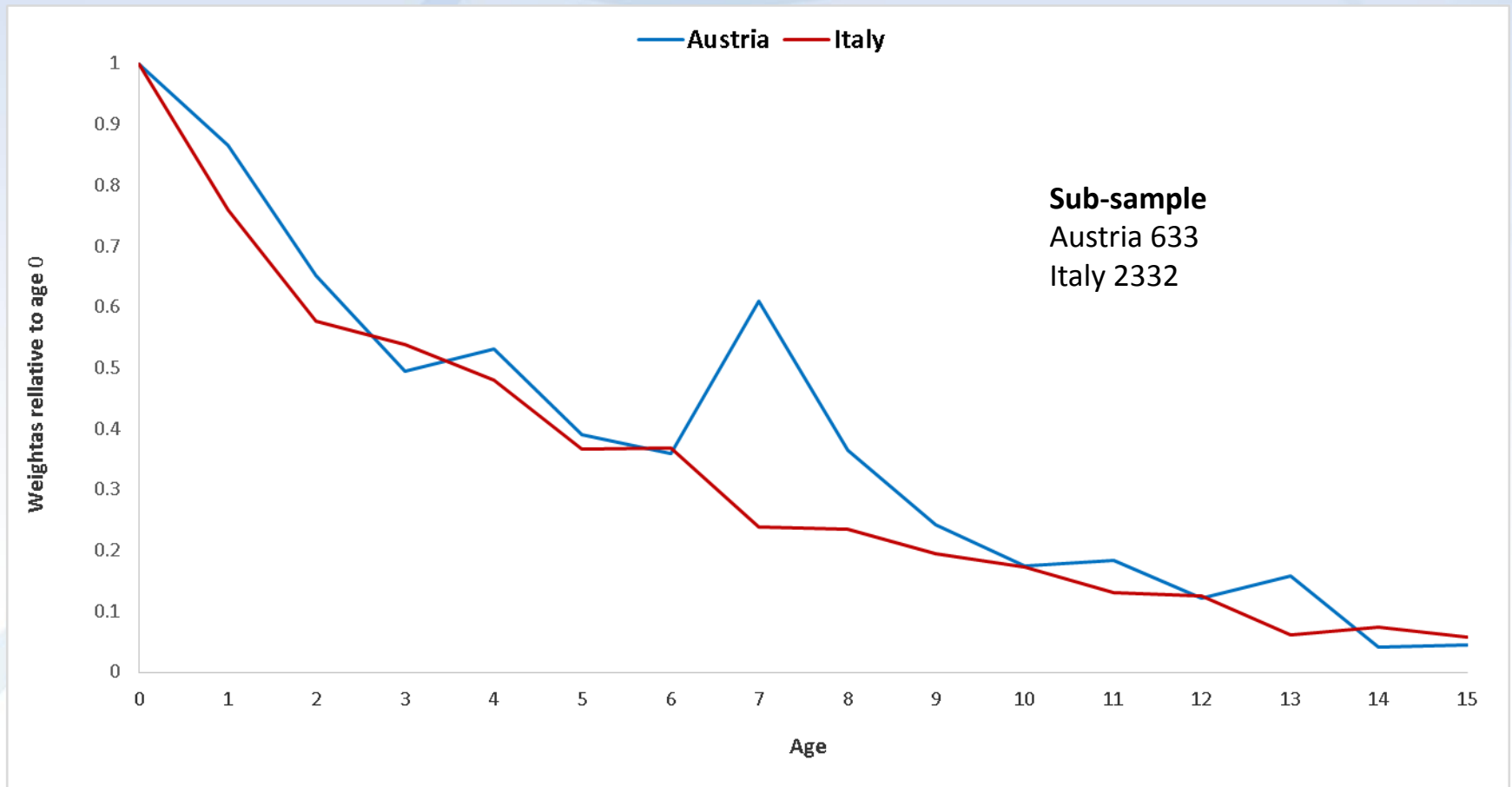
# Recent Developments

- Childcare (C.C.) e.s. based on the observation of the mean time devoted to C.C. activities by age of the receiver in **single-child households** (Hammer, 2014; Sambt, Hammer, Zannella and Furnkranz Prskawetz, 2014)
- Adultcare (A.C.) based on the observation of the mean time devoted to A.C. activities by age of the receiver in **two-adults households** (Zannella, 2014)

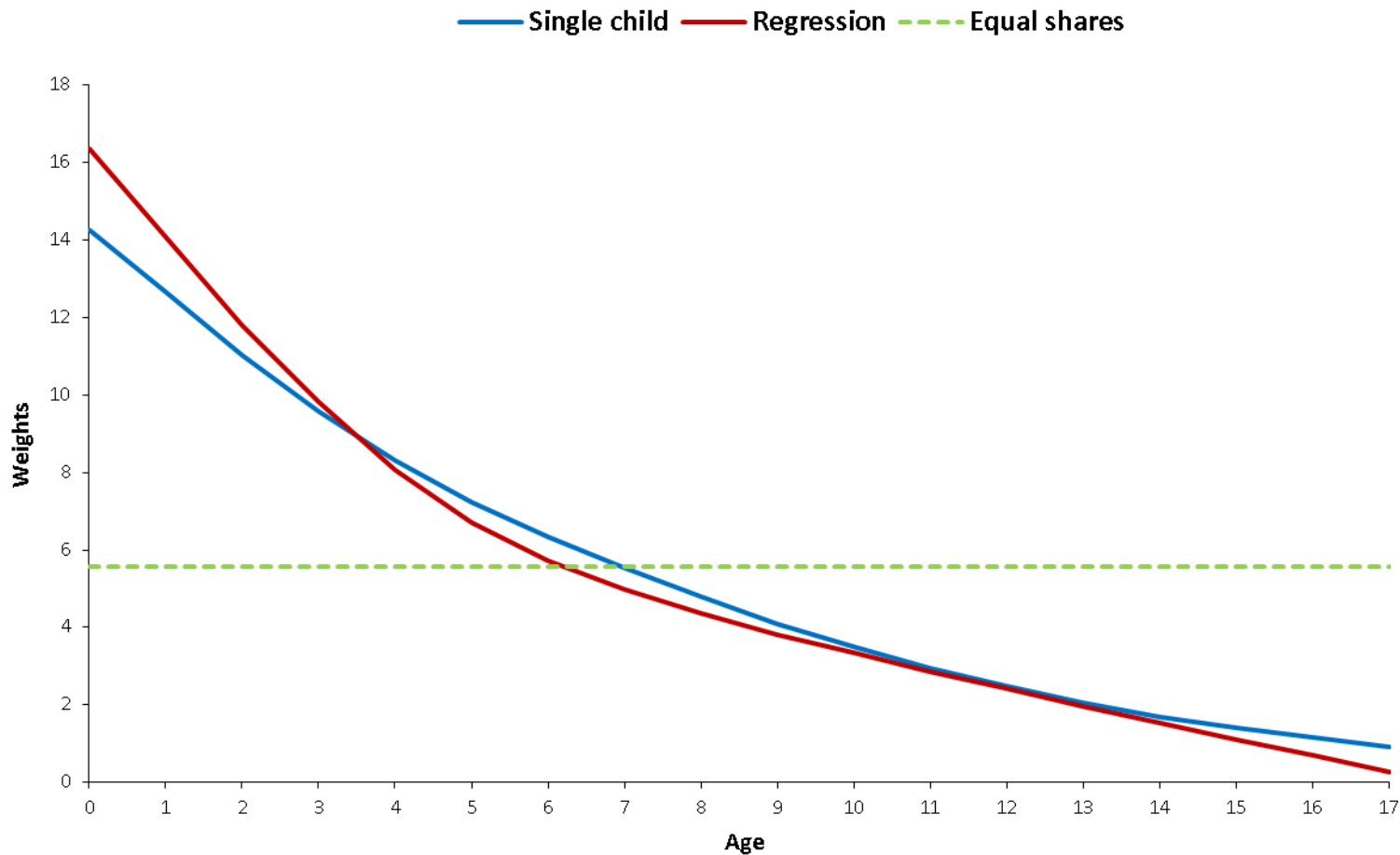
# Childcare



# Calculation of the Single-Child Equivalence Scale (Unsmoothed Values) – Italy and Austria (2008)



# Comparison of Childcare Equivalence Scales (Smoothed Values) – Italy, 2008



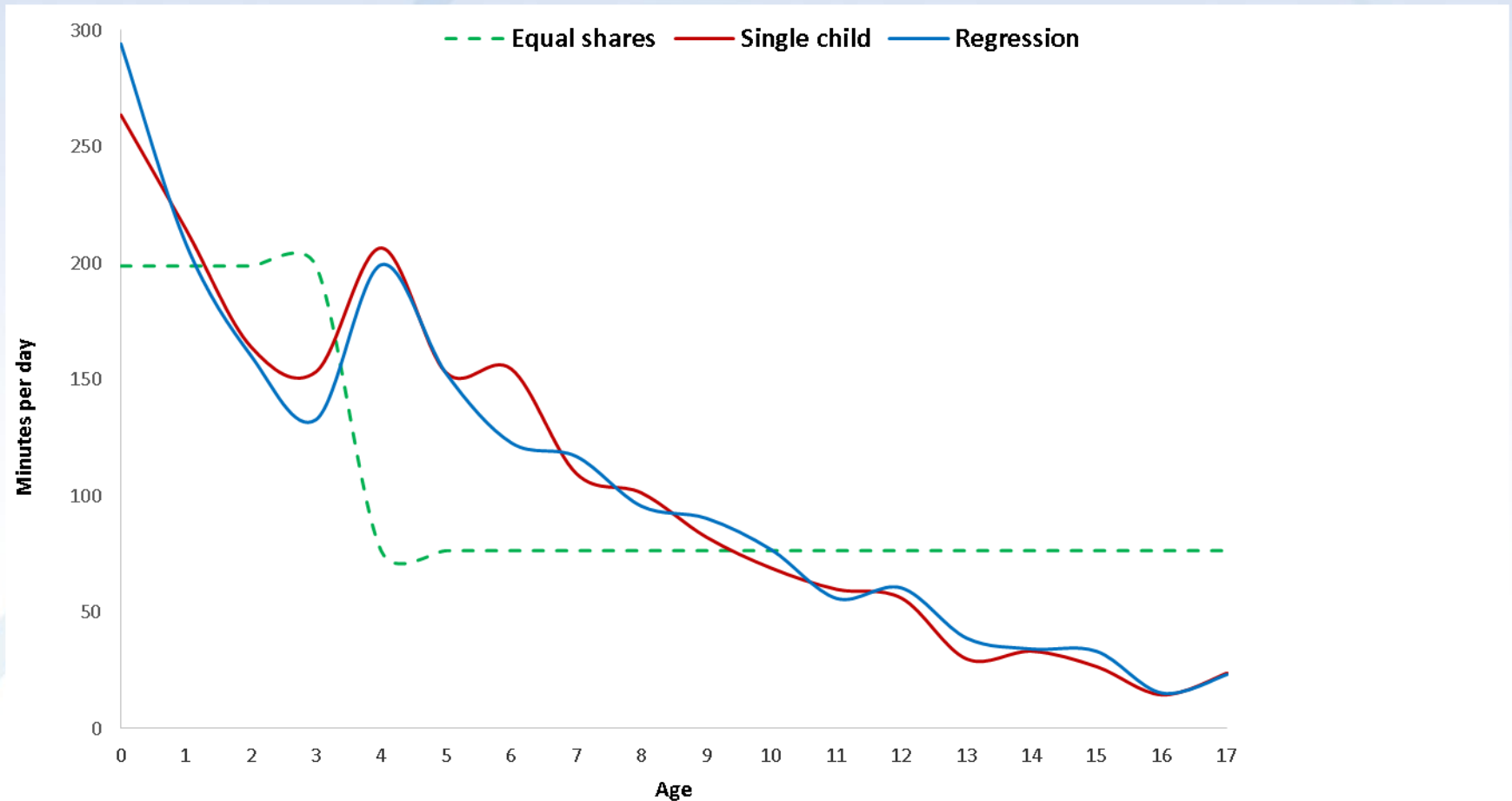


# Original TUS Data on Childcare - Hungary, 2000

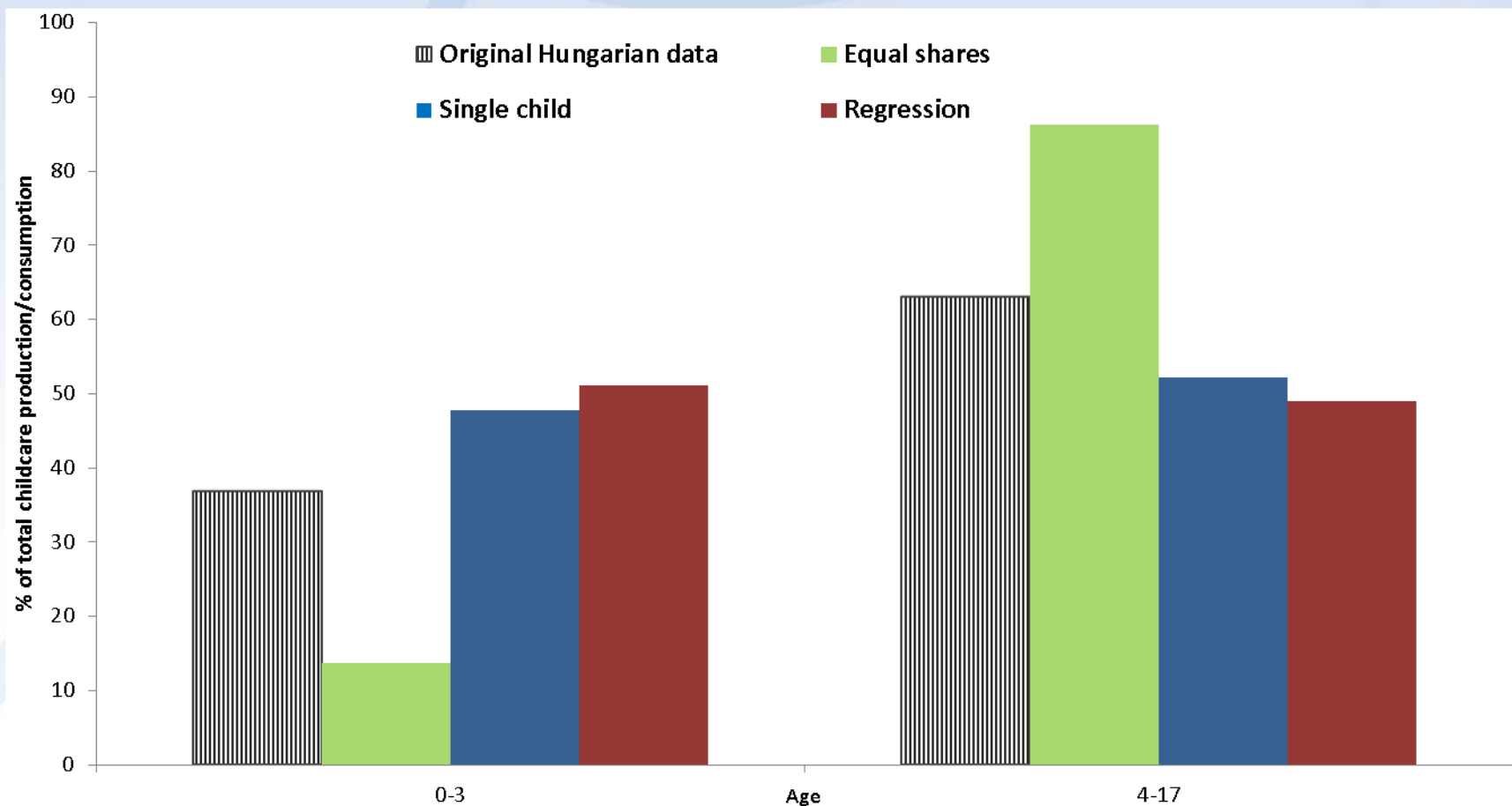
Age	Population	Aggregate Production/ Consumption	% Aggregate Production/ Consumption
0-3	284,938	76,074,039	37
4-17	1,797,831	129,934,028	63
<b>Total</b>	<b>2,082,769</b>	<b>206,008,067</b>	<b>100</b>

Source: Varga and Gal on Hungarian TUS (2000)

# Age Profiles of Childcare Consumption Using Different E.S. – Hungary, 2000



# Robustness Test for Childcare E.S. – Hungary, 2000

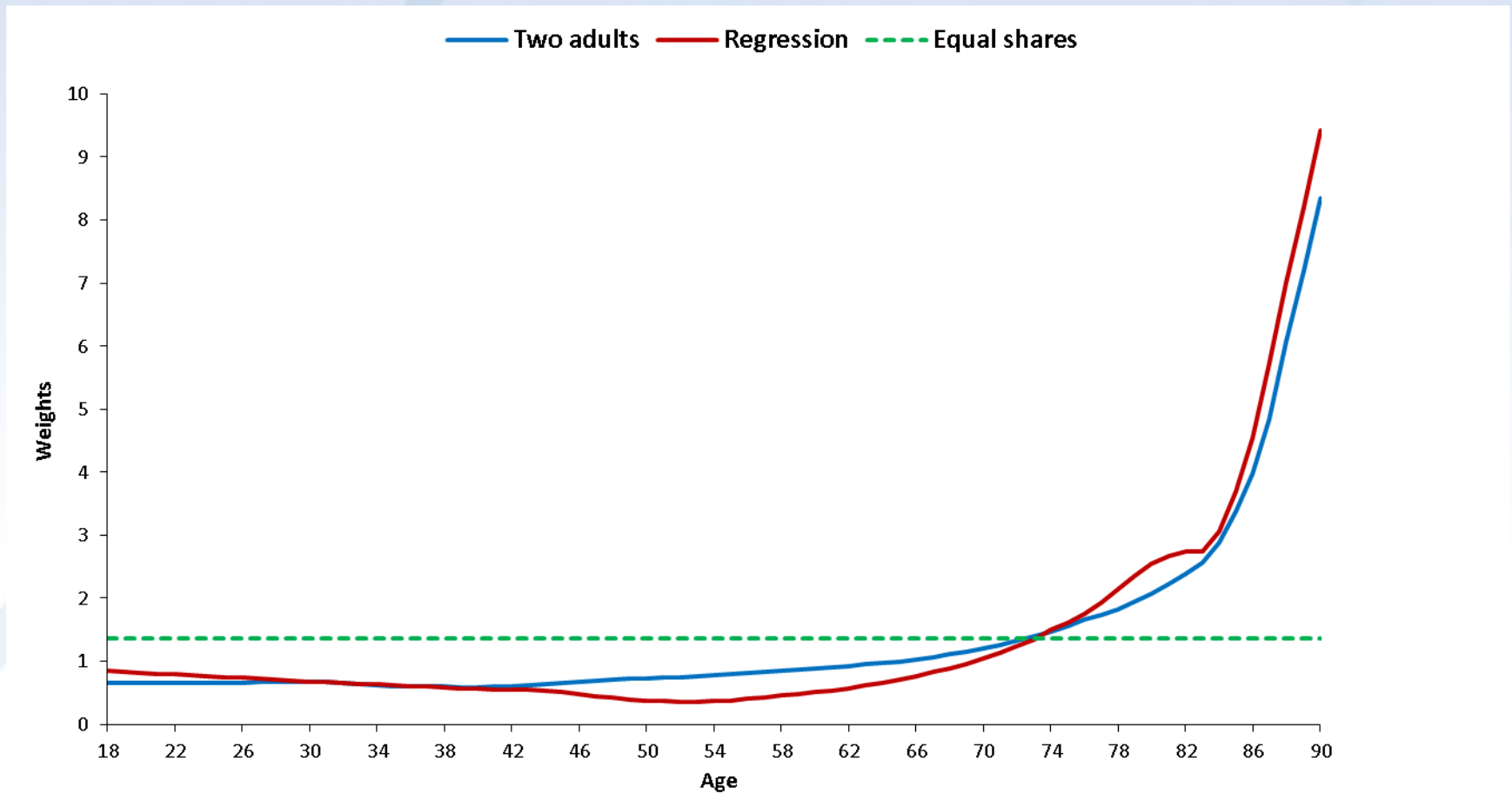


Source: Zannella on Italian (2008) and Hungarian TUS (2000)

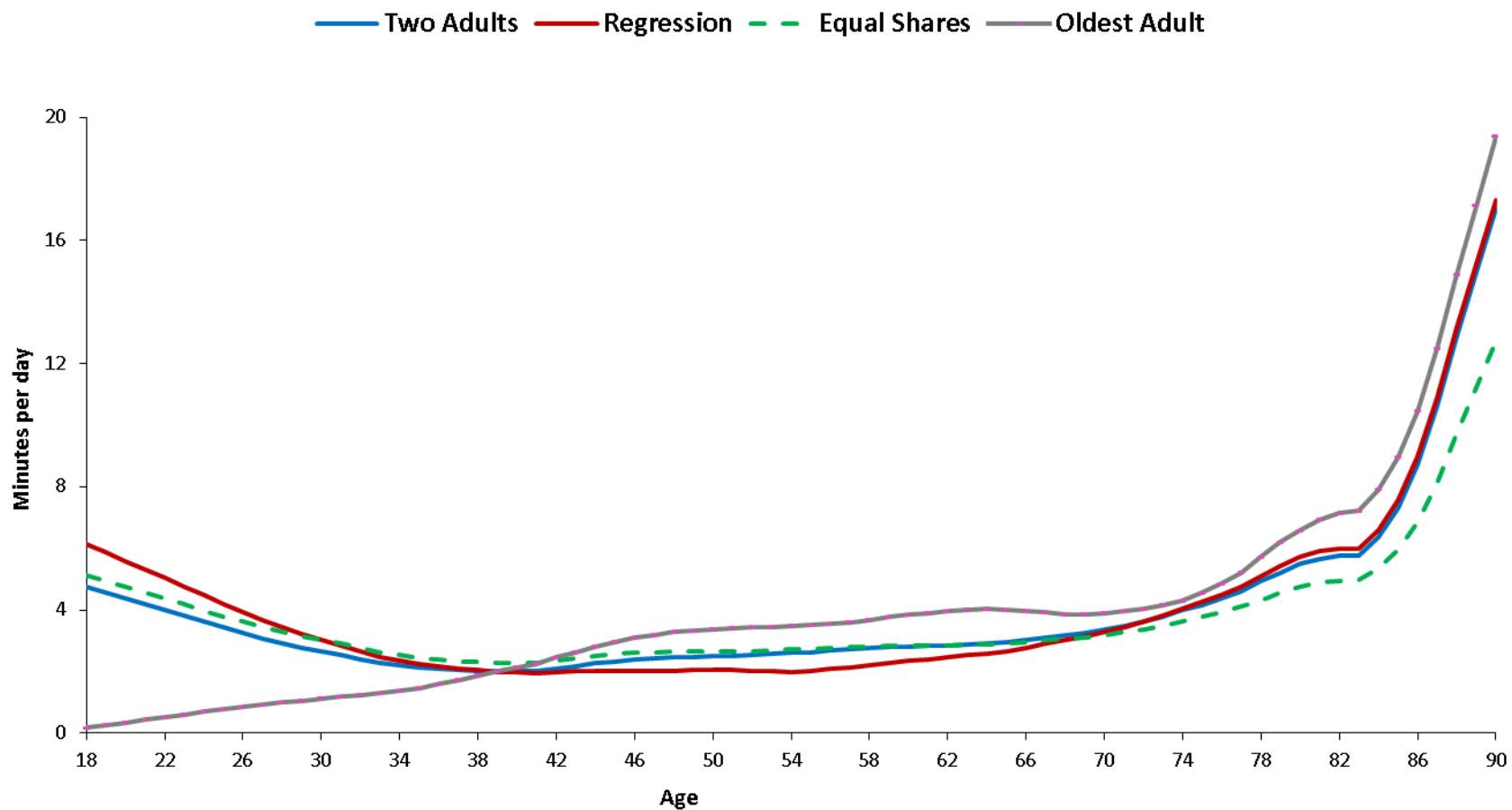
# Adultcare



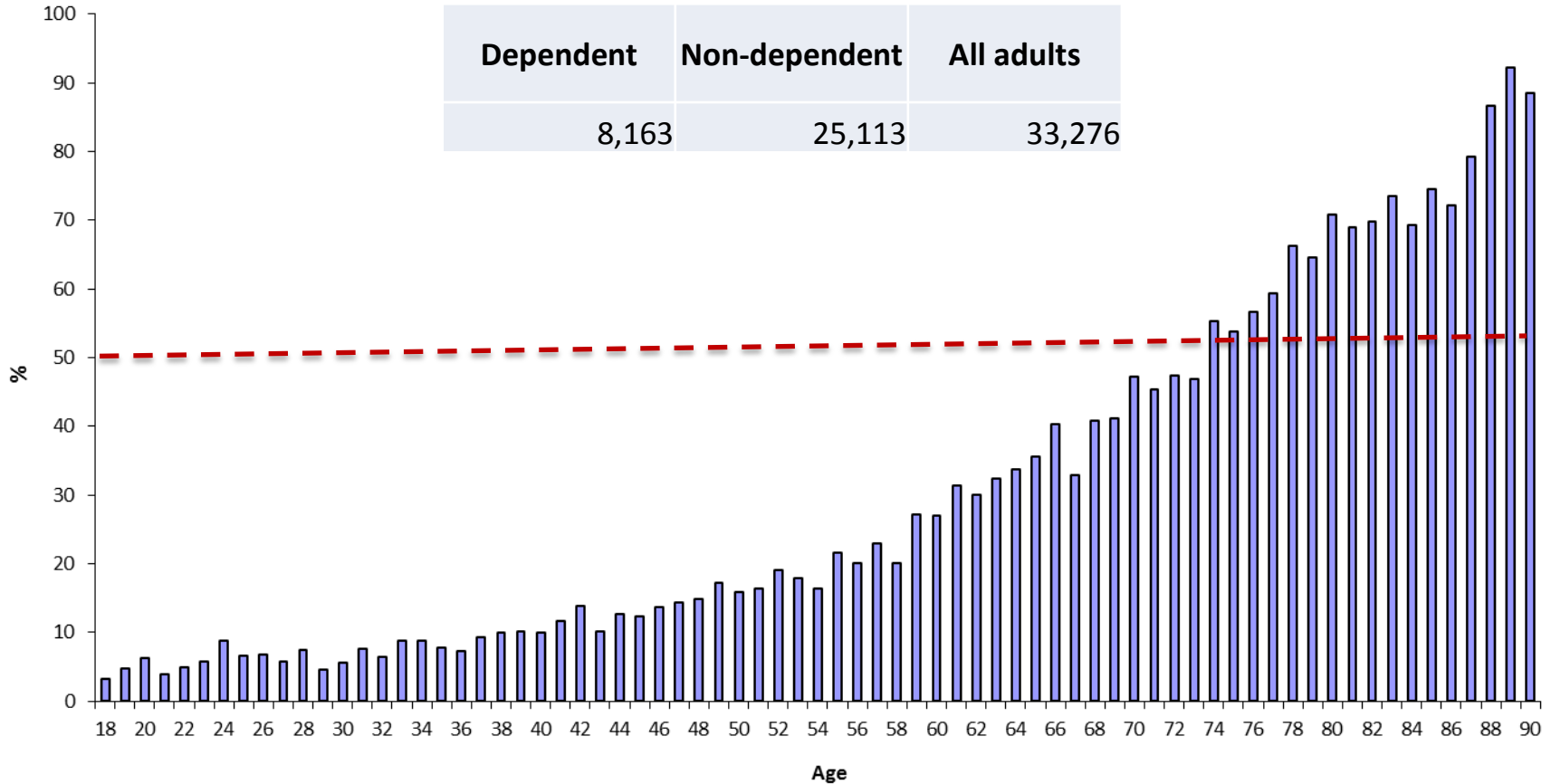
# Comparison of E.S. For Consumption of Adultcare (Smoothed Values) - Italy 2008



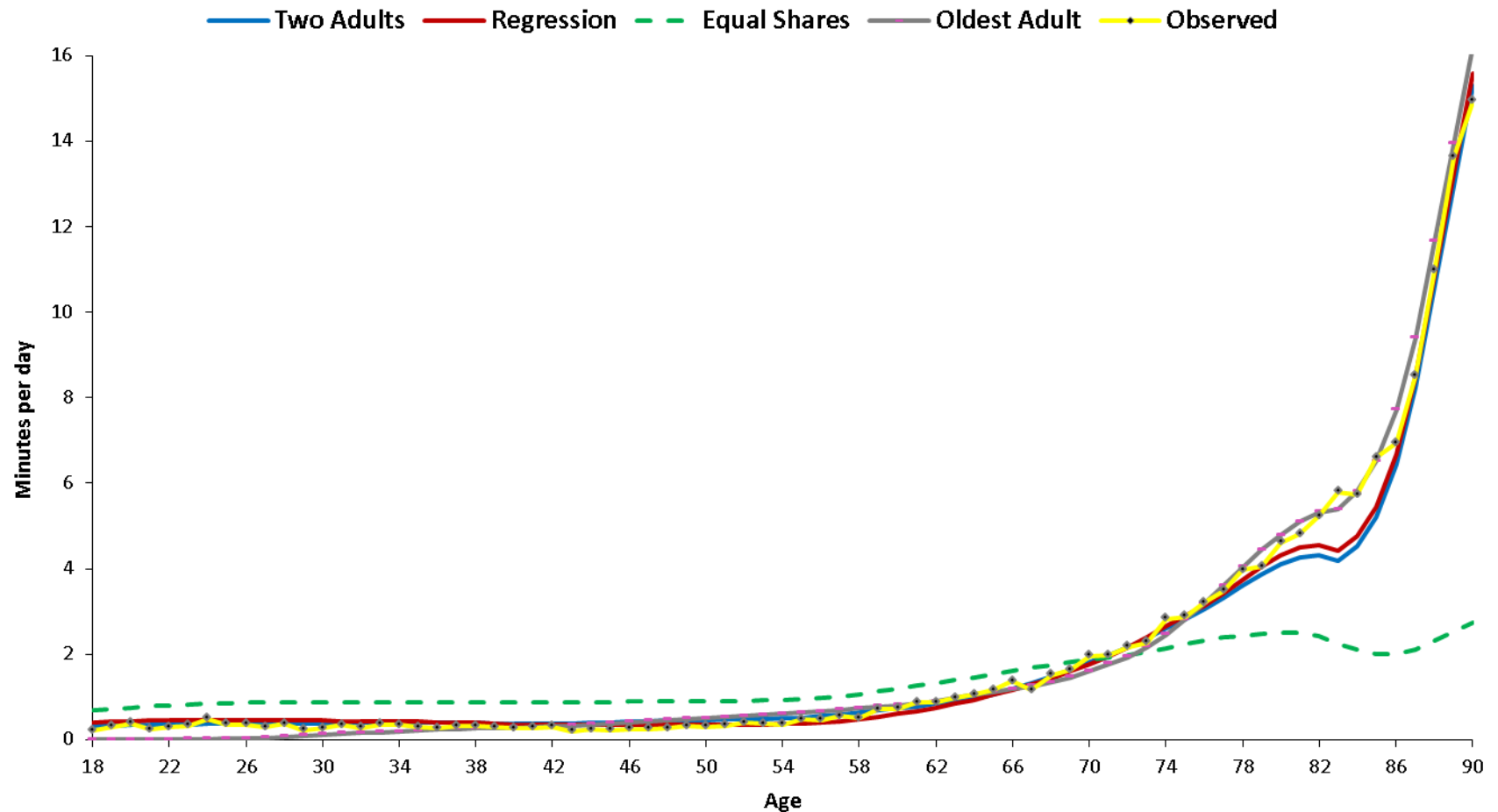
# Age Profiles of Consumption of Adultcare Using Different E.S. - Italy 2008



# Sample Size of **Dependent** Adults as a Share of Total Adults by Age – Italy, 2008

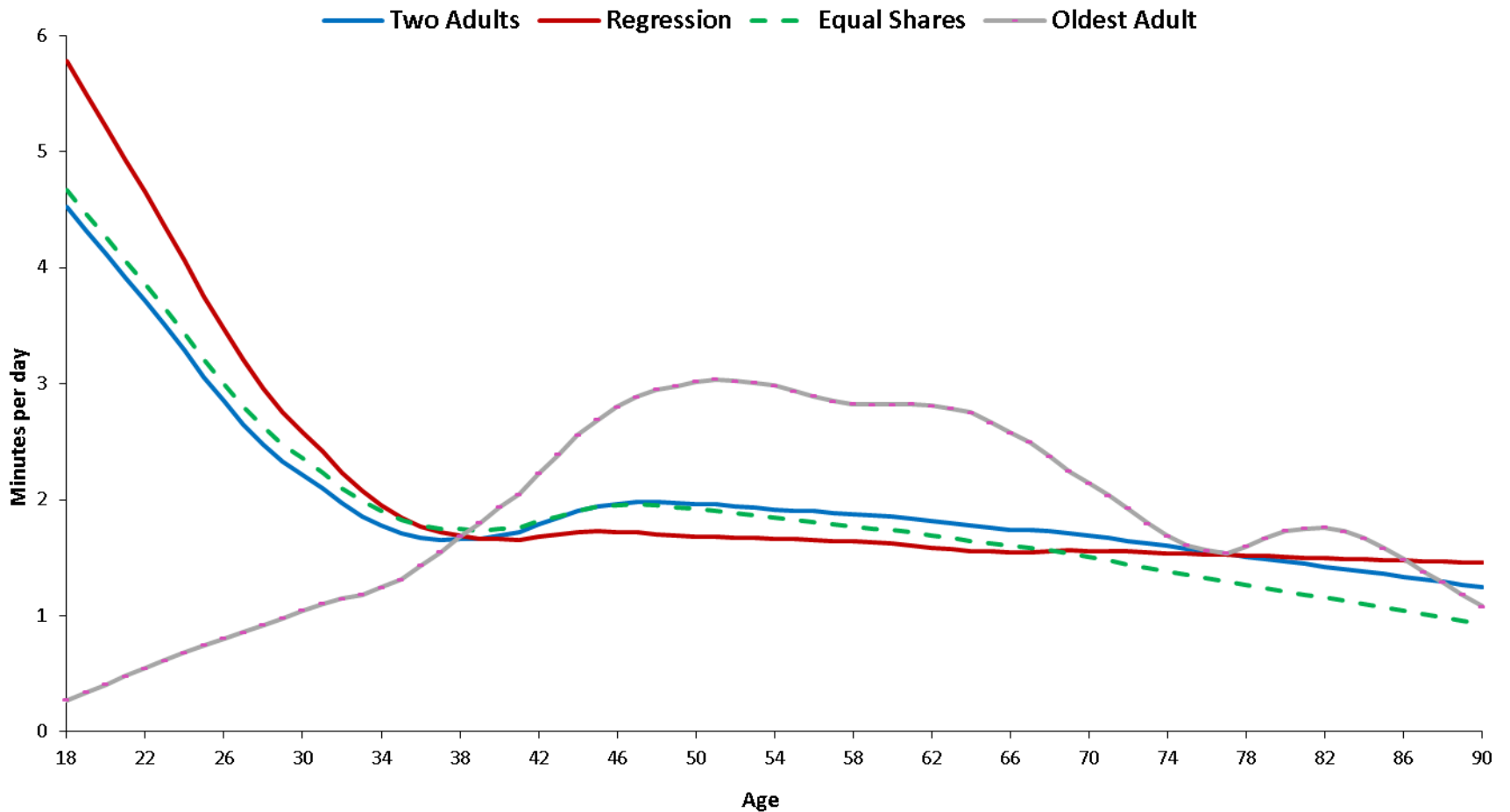


# Age Profiles of Adultcare for **Dependent** Adults Using Different E.S. – Italy, 2008





# Age Profiles of Adultcare for **Non-Dependent** Adults Using Different E.S.



# Conclusions

**...future collaborations ?**

marina.zannella@oeaw.ac.at



# Acknowledgments

- ❖ This project has received funding from the European Union's Seventh Framework Programme for research, technological development and demonstration under grant agreement no. 613247
- ❖ I am grateful to the East West Center's Research Program for supporting my participation in the Tenth Meeting of Working Group on Macroeconomic Aspects of Intergenerational Transfer: International Symposium on Demographic Change and Policy Response