

Macroeconomic adjustment, Mexico 2004: SNA-1993 vs. SNA-2008

IMG

May 13, 2010

Available macro controls and micro data in Mexico

[illegible]

Three Main Differences between UN SNA-1993 and UN SNA-1993:

- ▶ New base year: 2003 (before it was 1993)
- ▶ New input-output matrix: 2003 (before, input-output matrix 1993)
- I.
 - ▶ Inclusion of imputed social contributions into compensation of employees
 - ▶ New treatment for the rights of extraction for PEMEX: a) before: as taxes on products, b) now: as other taxes on production
 - ▶ Distribution of expenditures from auxiliary units among producing establishments
 - ▶ Broadening of the non-financial corporations sector by the inclusion of non-regulated corporations
 - ▶ Application of last international recommendations for the identification of the production from the Central Bank: as market and non-market production
 - ▶ Identification of market secondary production for some economic units from the general government; e.g., recreation services from IMSS (the main public enterprise for social

Three major changes

- II. Inclusion of transactions not able to measure before and conceptual revision for others.
 - ▶ Desagregation of compensation of employees
 - ▶ Better precision and coverage in the measurement of social security contributions and benefits
 - ▶ Detail current transfers for the non-profit institutions serving households sector (NPISH), household sector (residents and non-residents) and diverse transfers.
 - ▶ Detection that NPISH are selling at economic significant prices, considering this activity as market production.
 - ▶ Explicit report for inkind social transfers of the NPISH which is added to Household final consumption expenditure.
 - ▶ Better desagregation on the capital account.
 - ▶ The benefits that produce the household imputed rent is not considered like an extraction of the “quasi-corporations” income anymore.

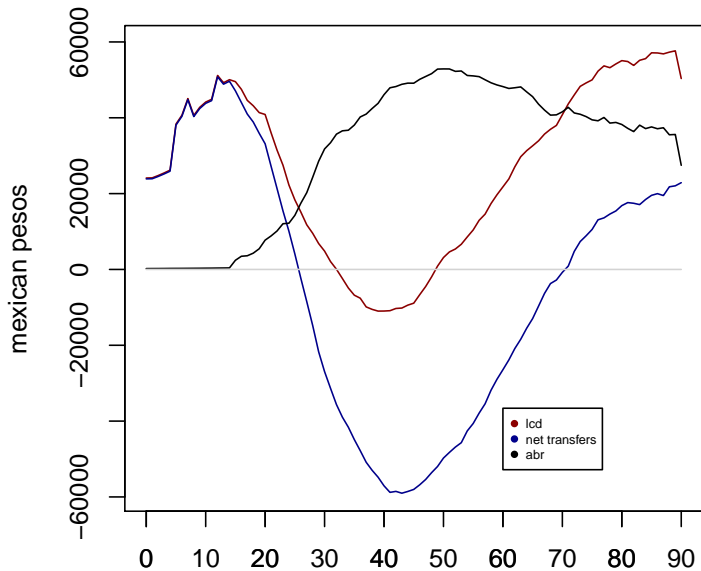
Three major changes

- III. Method's Manual: recommendations and actualization of the SNA 1993.
 - ▶ Revision of concepts and amplitude of assets
 - ▶ Financial sector evolution
 - ▶ Globalization effects on the economies, and practical and conceptual delimitation of the general government and the public sector

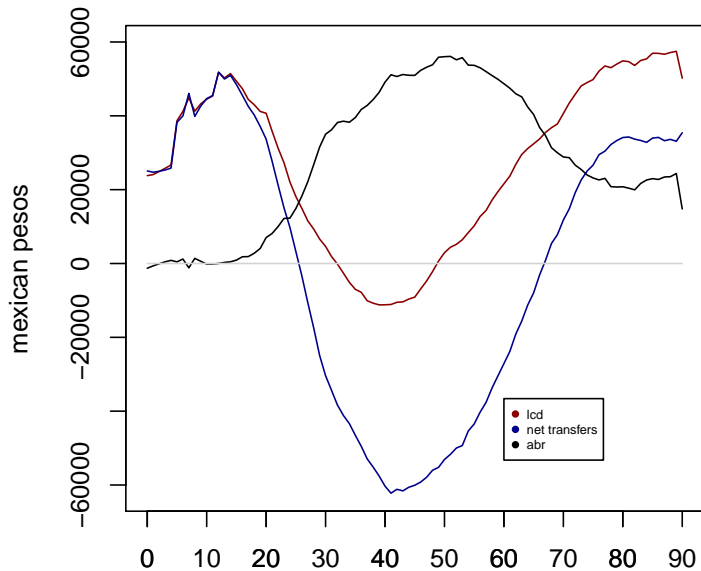
Macro control templates and UN SNA versions

- ▶ Case 1: UN SNA 1993, Taiwan macro-control template and NTA public sector spreadsheets (93p in the graphs)
- ▶ Case 2: UN SNA 1993 and Hungary macro-control template (93h in the graphs)
- ▶ Case 3: UN SNA 2008 and Hungary macro-control template (08h in the graphs)

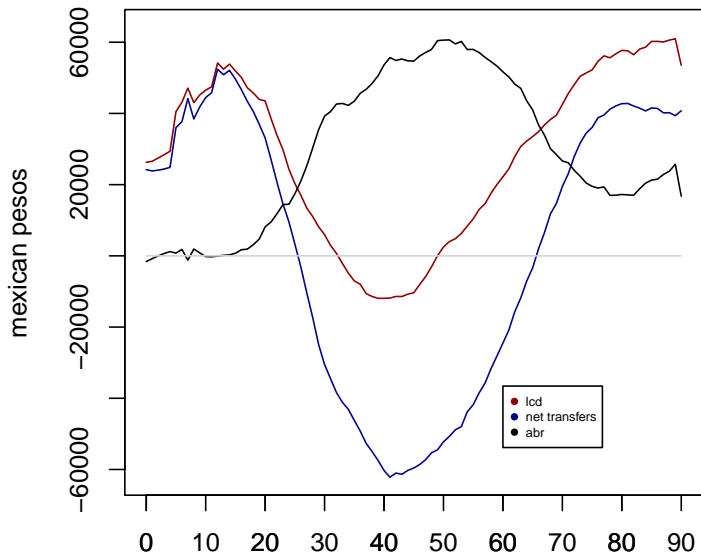
nta 2004: Mexico, sna 1993p



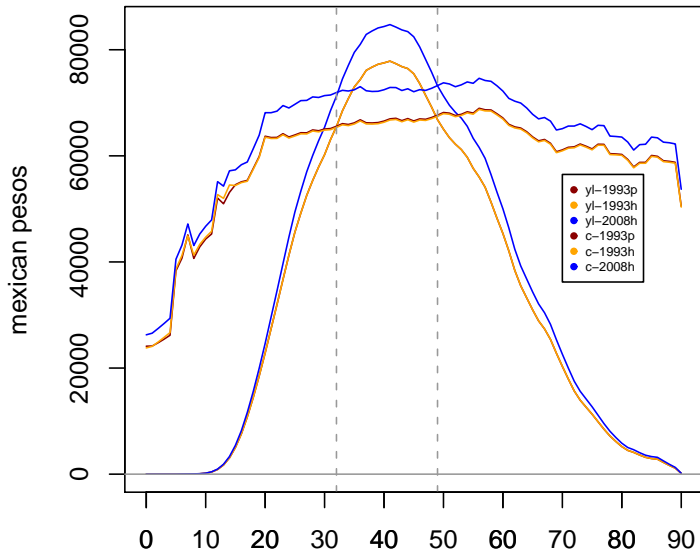
nta 2004: Mexico, sna 1993h



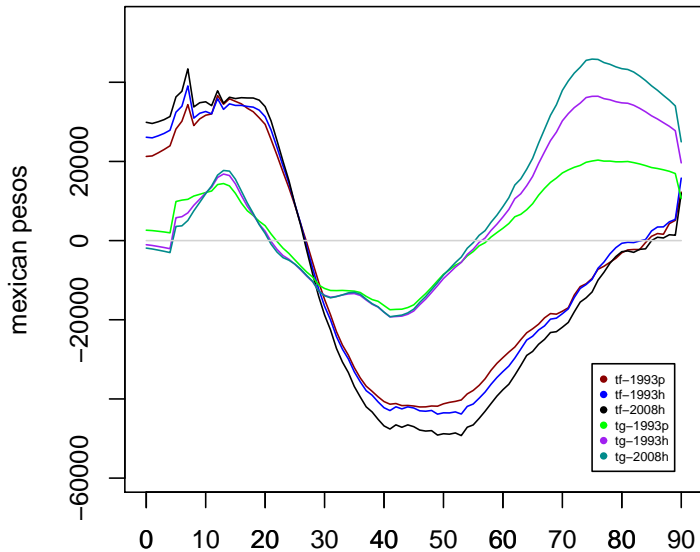
nta 2004: Mexico, sna 2008h



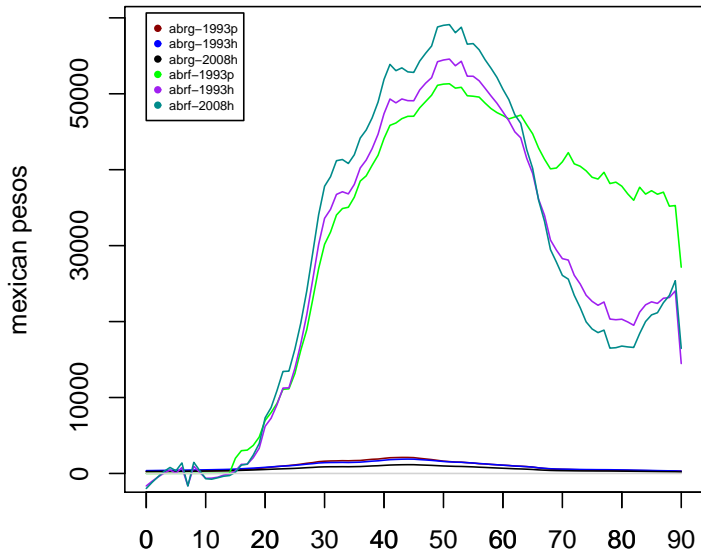
labor income and consumption 2004



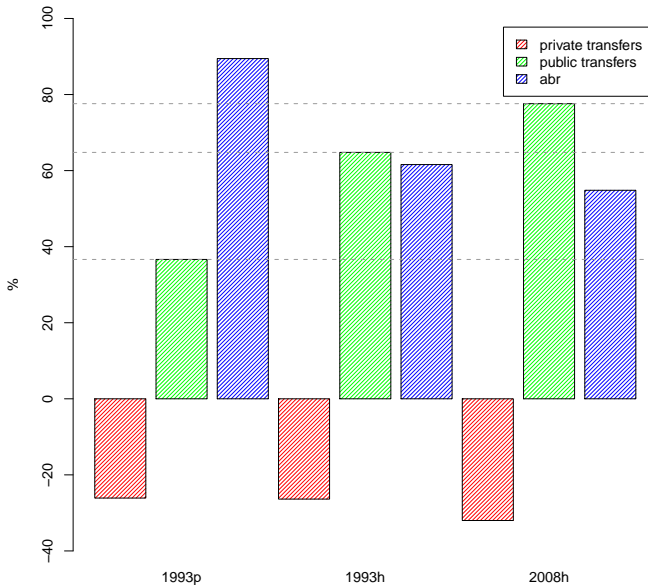
net transfers 2004



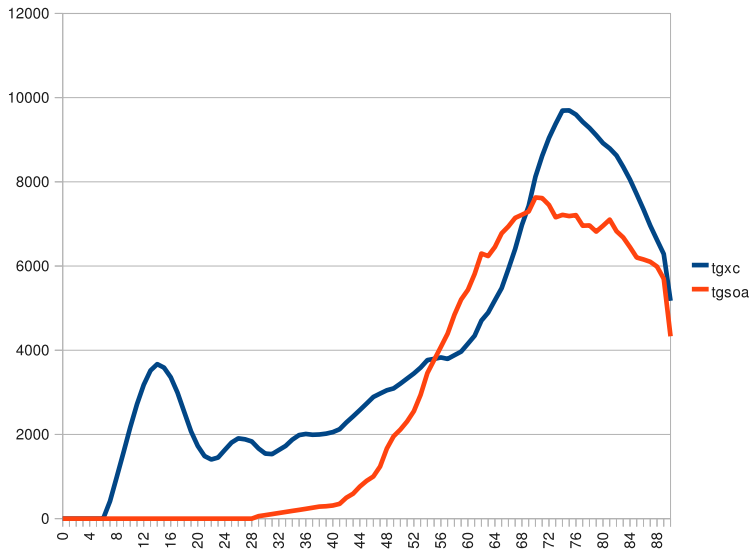
public and private abr 2004



financing lcd for 65+ (triangle graph)



Public inflows: cash and pensions



Taiwan mc template

Lifecycle Deficit	2,350,155,517	Lifecycle Reallocation	2,350,155,517
Consumption	5,761,300,437	Asset-based Reallocation	2,157,437,015
Private Consumption ⁹	4,847,329,227		
Private Consumption, Education	147,081,483		
Private Consumption, Health Care	59,069,255		
Private Consumption, Housing	412,482,979		
Private Consumption, Durables	351,036,006		
Private Consumption, Tobacco	0	Net Transfers	192,718,502
Private Consumption, Alcohol	0	Net Private Transfers	193,619,862
Private Consumption, Others	3,877,659,504	Net Public Transfers	-901,360
Public Consumption	913,971,210		
Public Consumption, Education ¹⁰	332,543,770		
Public Consumption, (Public) Health ¹⁰	171,207,071		
NHI benefit	0		
Public Consumption, Others	410,220,369		
Labor Income	-3,411,144,920		
Compensation to Employees	-2,251,576,294		-59.2%
Fringe benefits	-154,481,833		
Self-employment Labor Income	-1,005,086,793		

Hungary mc template

Flow account identity	thousands
<i>Life-cycle deficit</i>	<i>2,350,155,517</i>
Consumption	5,761,300,437
private consumption	4,847,329,227
public consumption	913,971,210
Labor income	-3,411,144,920
<i>Age-reallocation</i>	<i>2,350,155,517</i>
Asset-based reallocation	2,157,437,015
private asset-based reallocation	2,057,912,280
asset income, net	2,697,106,957
less: savings	639,194,677
public asset-based reallocation	99,524,735
asset income, net	307,698,419
less: savings	208,173,684
Transfers	192,718,502
private transfer	225,955,428
interhousehold transfer, inflow	493,932,815
interhousehold transfer, outflow	267,977,387
public transfer	-33,236,926
public transfer, inflow	1,714,692,398
public transfer, outflow	1,747,929,324
check whether transfer surplus equals to RoW transfer sufficit/deficit?	yes
check whether life-cycle deficit equals age allocation?	yes

Public inflows and outflows: Hungary template

Public	1,714,692,398	1,747,929,324
D.5 taxes on income and wealth	405,613,054	405,613,054
D.61 social contributions	184,064,640	184,064,640
D.62 social benefits other than in kind	156,622,070	156,622,070
D.7 n other current transfers	968,392,634	1,001,629,560

Public income and expenditure: administrative records

Public income	1,771,314.2	-> Public income	1,771,314.2		
Federal government	1,270,211.1	Oil revenues	637,360.4	-> Oil revenues	637,360.4
Public enterprises	501,103.1	Federal government	446,588.4	Federal government	446,588.4
		PEMEX	190,772.0	rights (royalties)	354,381.8
Net total expenditure	1,802,610.2	No oil revenues	1,133,953.8	IEPS	53,334.5
"Programmable"	1,326,952.4	Federal government	823,622.7	other	38,872.1
current	1,073,695.0	Taxes	716,785.1	PEMEX	190,772.0
capital*	253,257.4	No Taxes	106,837.6	goods and services	173,795.3
No "programmable"	475,657.8	Public enterprises	310,331.1	other	16,976.7
interests, commissions, etc...	161,893.9				
banking system bailout	44,935.3				
participation to the states and municipalities	239,890.2				
ADEFAS	28,938.4				
		Complementary information:			
		Federal government	1,270,211.1		
		Taxes	769,385.7		
		No Taxes	500,825.4		
		Public enterprises	501,103.1		

* Includes: physical investment, subsidies, capital transfers and other

Source: SHCP

Public inflows: NTA spreadsheet

Mexico, 2004					
mexican pesos\$ millions					
Public Transfer Inflows Classified by Function					
Function	Total Inflows	Domestic			Rest of the World
		Total Domestic Inflows	In-kind Transfer Inflows	Cash Transfer Inflows	
Total	1,237,652	1,236,751	913,971	322,780	901
Education	332,544	332,544	332,544		
Health	171,207	171,207	171,207		
Pensions	87,866	87,866		87,866	
Other Social Protection	60,106	60,106	0	60,106	
Other	585,929	585,027	410,220	174,807	901

Public outflows: NTA spreadsheet

Mexico, 2004	mexican pesos\$ millions	
Transfer Outflows (UN SNA Classification)		PEMEX
TOTAL	-1,138,128	
Taxes on production and imports [1]	-447,545	
Taxes on products	-406,085	
Value added type taxes (VAT)	-291,147	
Taxes and duties on imports excluding VAT	-29,693	
Export Taxes	0	-110711,43
Taxes on products except VAT, import and export taxes	-85,245	
Monopoly revenues and excise and stamp taxes from tobacco and alcohol	-85,245	
Taxes on financial transactions		
Other	0	-261019,36
Other taxes on production	-41,460	-371730,79
Subsidies [1]	32,778	
Subsidies on products	32,778	
Import subsidies		
Export subsidies		
Other subsidies on products	32,778	
Other subsidies on production		
Current taxes on income, wealth, etc. [2]	-405,474	
Taxes on income	-368,013	
Individual income tax	-194,888	
Corporate income tax	-173,126	
Other current taxes	-37,461	
Taxes on asset holdings		
Other	-37,461	
Social contributions [2,3]	-175,415	
Employers' actual social contributions	-153,351	
Social contributions by self- and non-employed persons		
Imputed social contributions	-22,065	
Other current transfer outflows [2]	-142,471	
Other current transfers, domestic [4]	-141,735	
Other current transfers, rest of the world [5]	-736	

Sources:

[1] Allocation of primary income account, resources, general government.

[2] Secondary distribution of income account, resources, general government.

[3] Includes social contributions paid to social security funds, insurance enterprises, or autonomous pension funds, administering social insurance schemes to secure social benefits for employees. Thus, all sectors are included.

[4] Includes other current transfers, uses, for general government except current transfer with in general government and current international cooperation.

[5] Current international cooperation.

Public abr: NTA spreadsheet

Mexico, 2004	mexican pesos	millions
Public Asset Income		
Asset Income (total)	307,698	
Operating surplus, net	371,731	
Property income, net	(64,032)	
Property inflows	123,623	
Property outflows	(187,656)	
Interest, net	(145,294)	
Inflows	42,355	
Outflows	(187,649)	
Distributed income of corporations, net	71,086	
Inflows	71,086	
Outflows	-	
Reinvested earnings on DFI, net	-	
Inflows	-	
Outflows	-	
Property income to insurance policyholders	320	
Inflows	320	
Outflows	-	
Rent, Net	9,856	
Inflows	9,863	
Outflows	(7)	
Source: UNSNA 1993 Allocation of primary income account (general government) p. 159.		

Public balance: NTA spreadsheet

Mexico, 2004		mexican pesos	\$ millions
Structure of Public Flow Account			
Public Transfers			
Net Public Transfers			0
Public Transfer Inflows			1,237,652
In-kind Transfer Inflows	913,971		
Cash Transfer Inflows	323,681		
Public Transfer Outflows			-1,237,652
Taxes and Grants	-1,138,128		
Transfers Surplus(+)/Deficit(-)	-99,525		
Public Asset-based Flows			
Public Asset-based Reallocations			99,525
Asset Income, net			307,698
Less: Public Saving			208,174

Checks:

Are net public transfers zero? yes

Is sum of transfer surplus and asset-based reallocations zero? yes

ABR: NTA spreadsheet

Variable	Year	Total	Private	ROW	Public
Asset income	2004	3,140,351.0	2,697,107.0	135,545.6	\$307,698
Capital income	2004	3,140,351.0	2,768,620.2	0.0	371730.79
Operating surplus, net	2004		2,283,513.5		\$0
Operating surplus of corporations and NPISHs, net	2004		1,871,030.5		
Operating surplus of households, net	2004		412,483.0		
Capital share of mixed income, net	2004		499,189.6		
Other taxes less subsidies on production	2004		-14,082.8		371730.79
Property income, net	2004	0.0	-71,513.3	135,545.6	-64,032.4
Property income, inflows	2004	2,512,012.3	2,212,108.8	176,280.1	123,623.4
Property income, outflows	2004	-2,512,012.3	-2,283,622.1	-40,734.5	-187,655.8
Interest, net	2004		41,209.0		
Inflows	2004		467,430.4	129,017.2	\$42,355
Outflows	2004		-426,221.4	-24,932.2	-\$187,649
Interest outflows, households	2004		-48,072.6		
Interest outflows, households to government	2004		-8,221.4		
Distributed income of corporations, net	2004		-91,793.0	20,706.7	71,086.3
Inflows	2004		1,686,805.5	21,727.3	\$71,086
Outflows	2004		-1,778,598.5	-1,020.6	\$0
Reinvested earnings on DFI, net	2004		-10,753.9	10,753.9	0.0
Inflows	2004		14,781.6	25,535.6	\$0
Outflows	2004		-25,535.6	-14,781.6	\$0
Property income to insurance policyholders	2004		-319.7	0.0	319.7
Inflows	2004		15,343.4	0.0	\$320
Outflows	2004		-15,663.1	0.0	\$0
Rent, Net	2004		-9,855.6	0.0	9,855.6
Inflows	2004		27,747.8	0.0	\$9,863
Outflows	2004		-37,603.5	0.0	-\$7
Saving, Net/Current external balance	2004		639,194.7	83,071	208,174
Capital transfers, net	2004		20,902.5	0.0	-20,902.5
Capital transfers, inflows	2004		38959.9	0.0	142490.7
Capital transfers, outflows	2004		-18057.4	0.0	-163393.2