

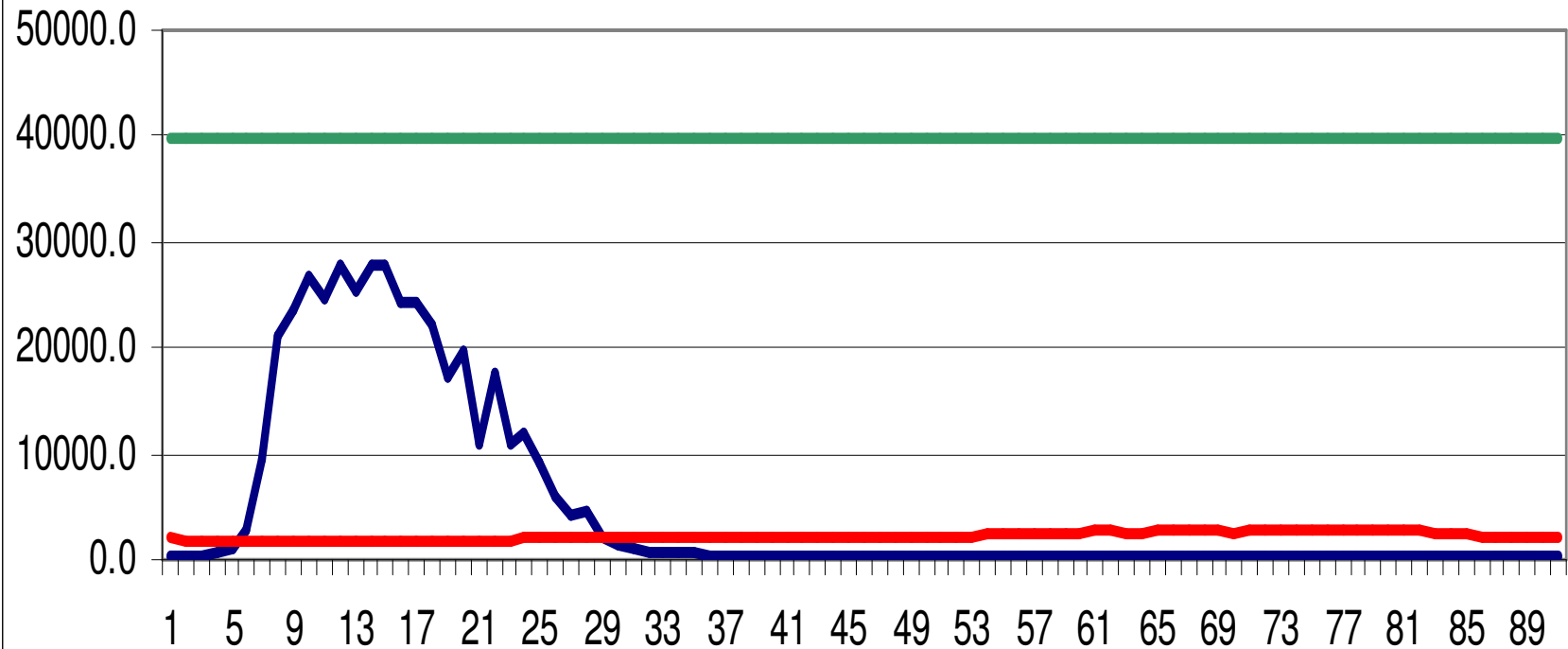
TRANSFERS AGE PROFILE FOR SENEGAL

30 april 2010, Cape Town

AGGREGATE MACRO CONTROLS

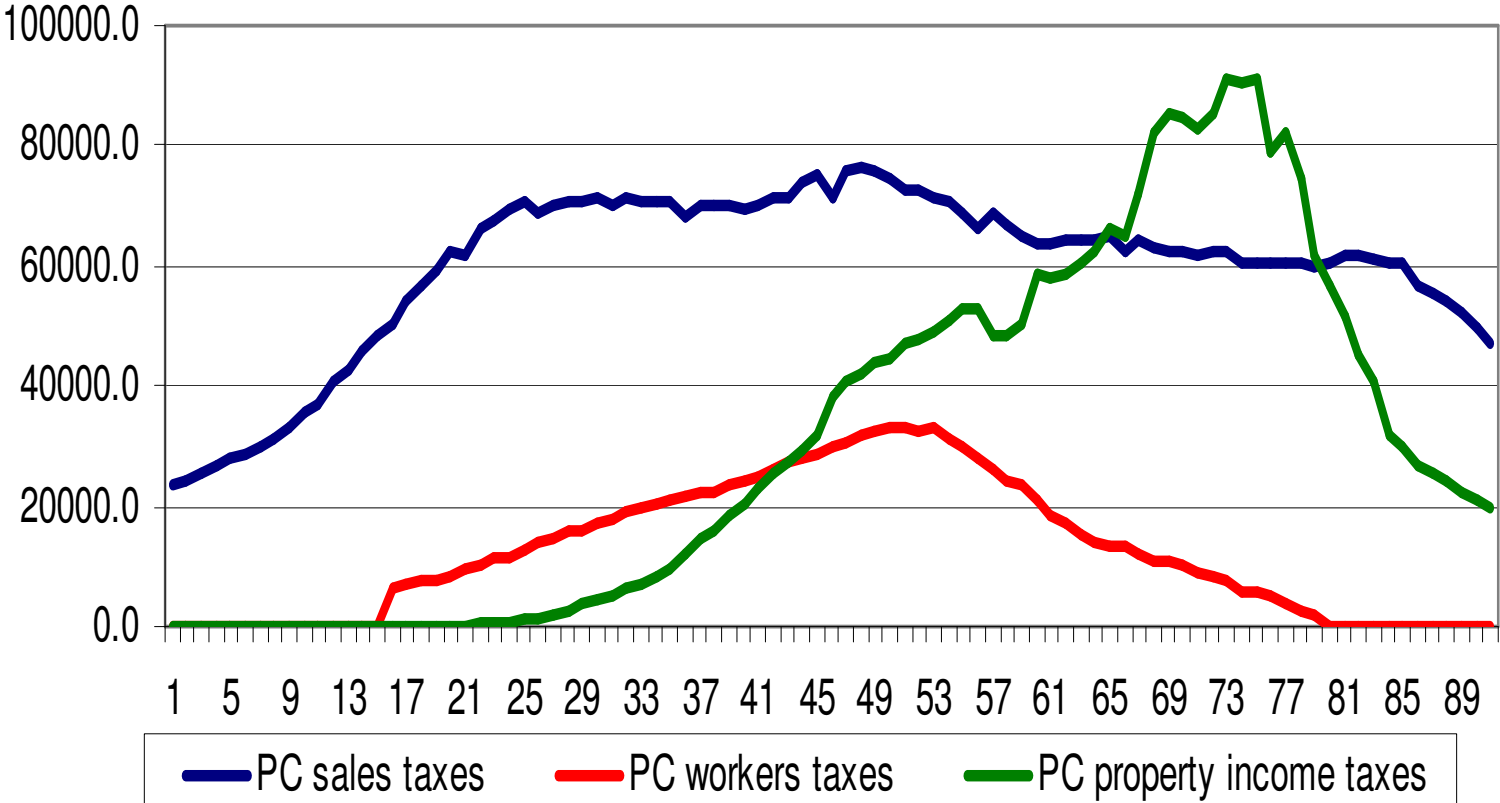
	2005	
PUBLIC TRANSFERS OUTFLOWS	639.2	
Taxes Directs	237.4	Corporate taxes
Impot sur les sociétés	102.2	
Impôt sur la propriété	23.2	Property Taxes
Impôts sur le revenu des ménages	112	Workers taxes
Indirects taxes	613.3	SALES TAXES
TVA	286.3	VAT
Commerce extérieur	327.0	IMPORT TAXES SUBSIDIES
PUBLIC TRANSFERS DEFICIT OR SURPLUS	-211.5	
PUBLIC TRANSFER INFLOWS	639.2	
INKIND TRANSFERS	605	CG
Education	113.1	CGE
Sante	22.6	CGH
Autres	469.3	CGX
CASH TRANSFERS	34.2	
Sécurité Social	9.2	cash transfer
Bourse et autres	25	GRANTS

Per capita public transfers inflow, Senegal 2005

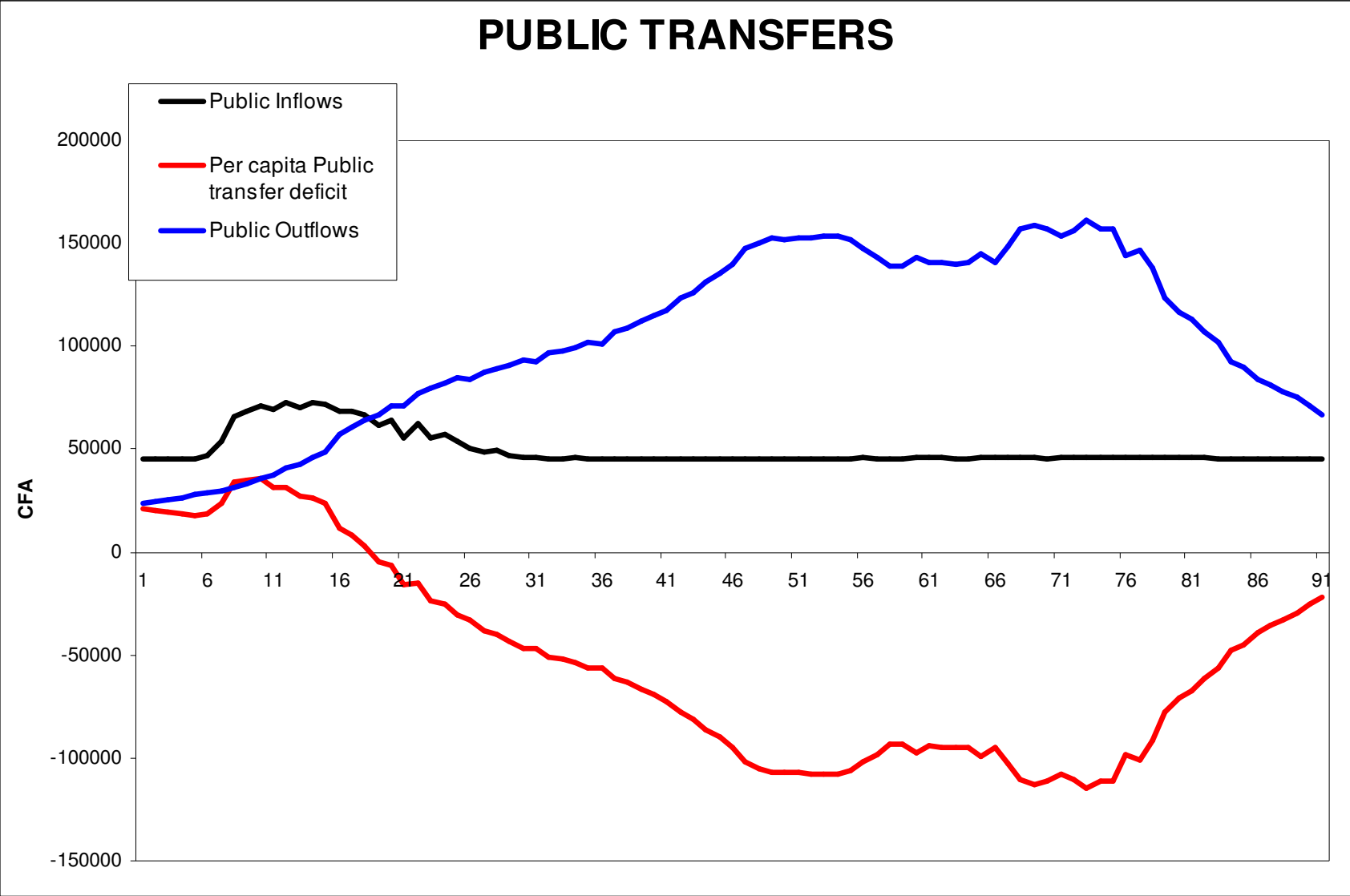


— PC education taxes — PC Health taxes — PC Others Taxes

Per capita public transfers outflow, Senegal 2005



PER CAPITA



PER CAPITA

INTERHOUSEHOLDS TRANSFERS

