

# A Tour Through Austria's NTA

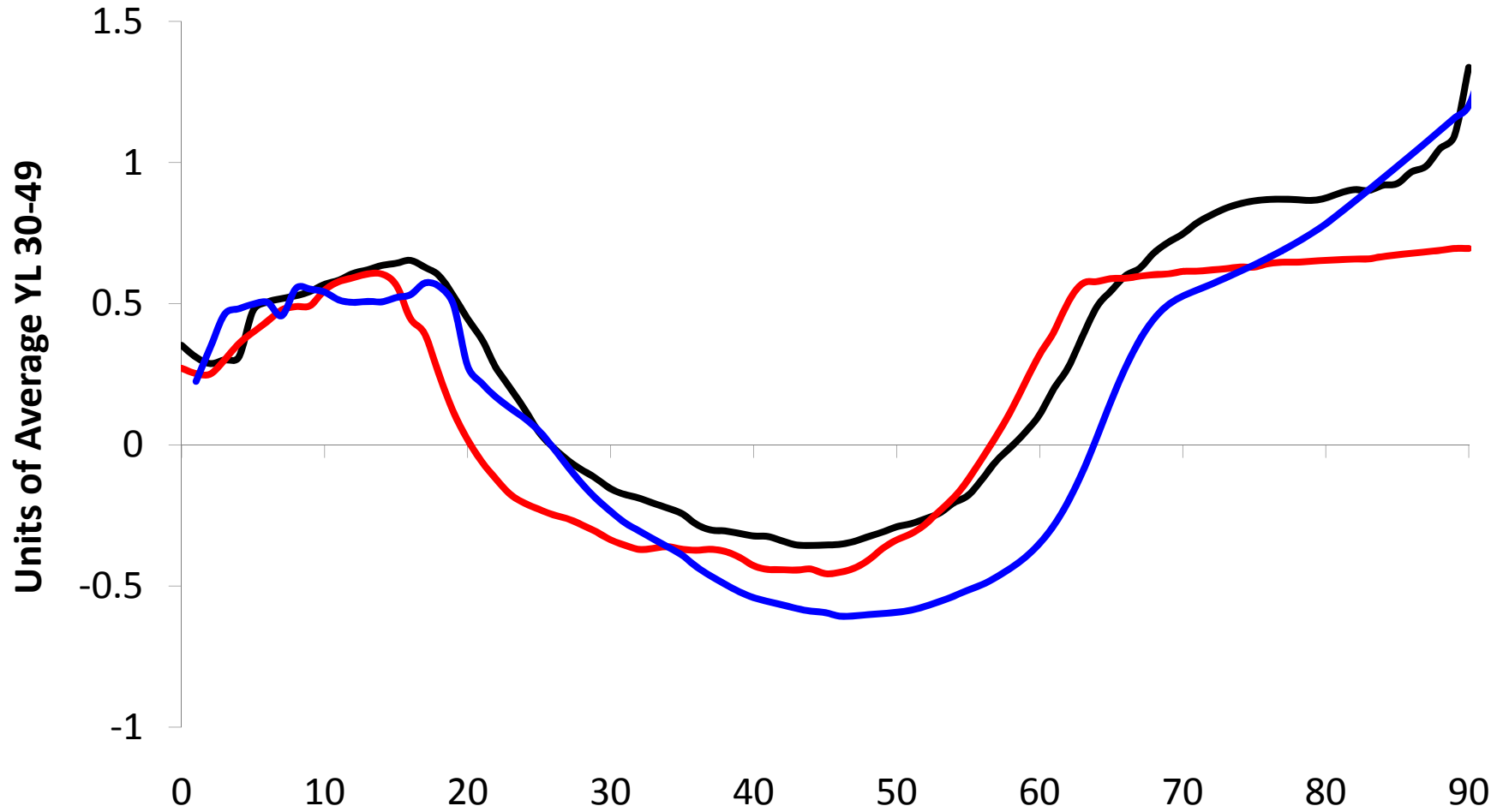
Year 2000

Upload Dated April, 2009

(US Team NTA meeting 12/1/2009)

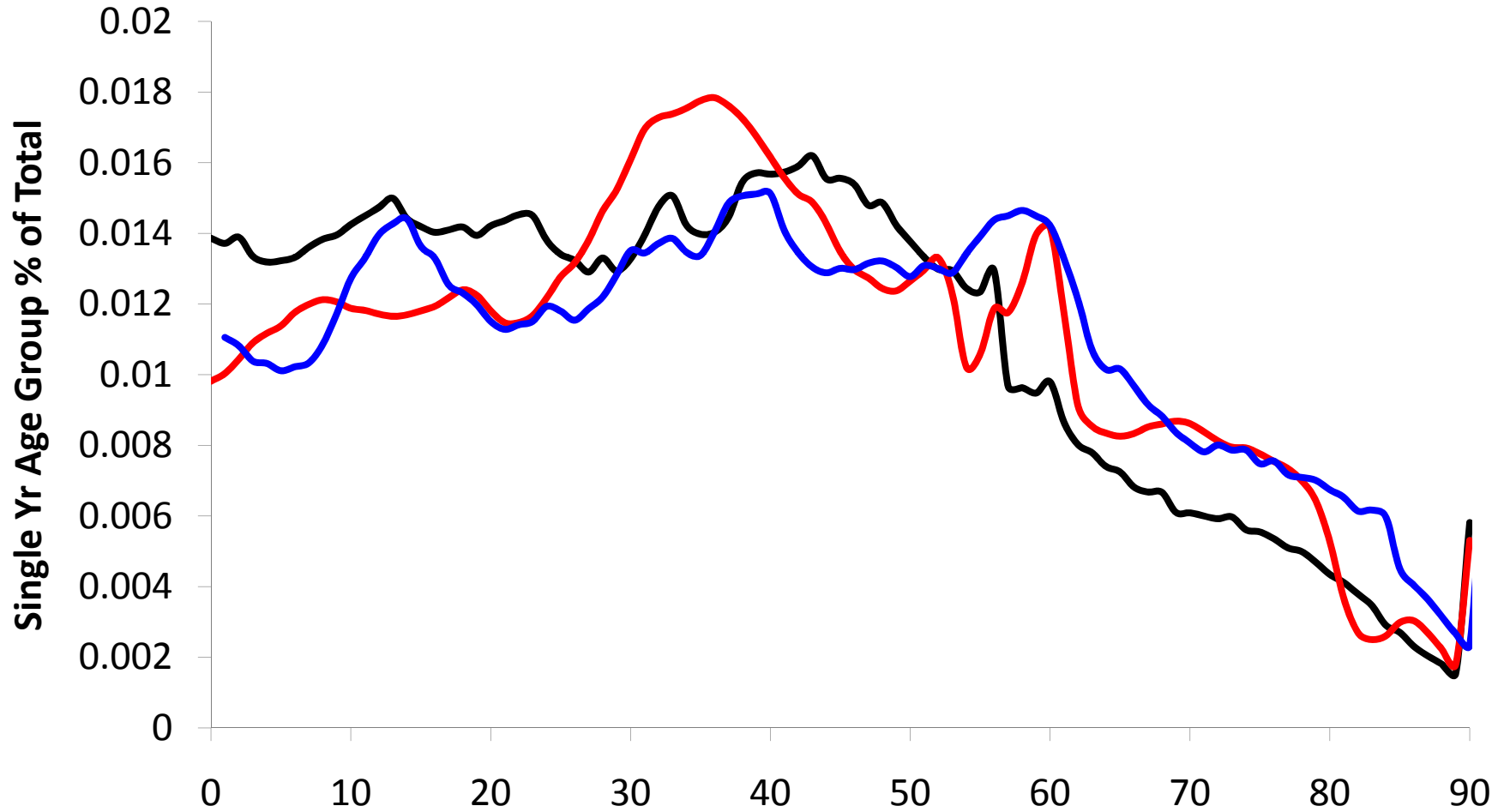
# LCD

(Red - Austria 2000; Black - US 2003; Blue - Sweden 2003)



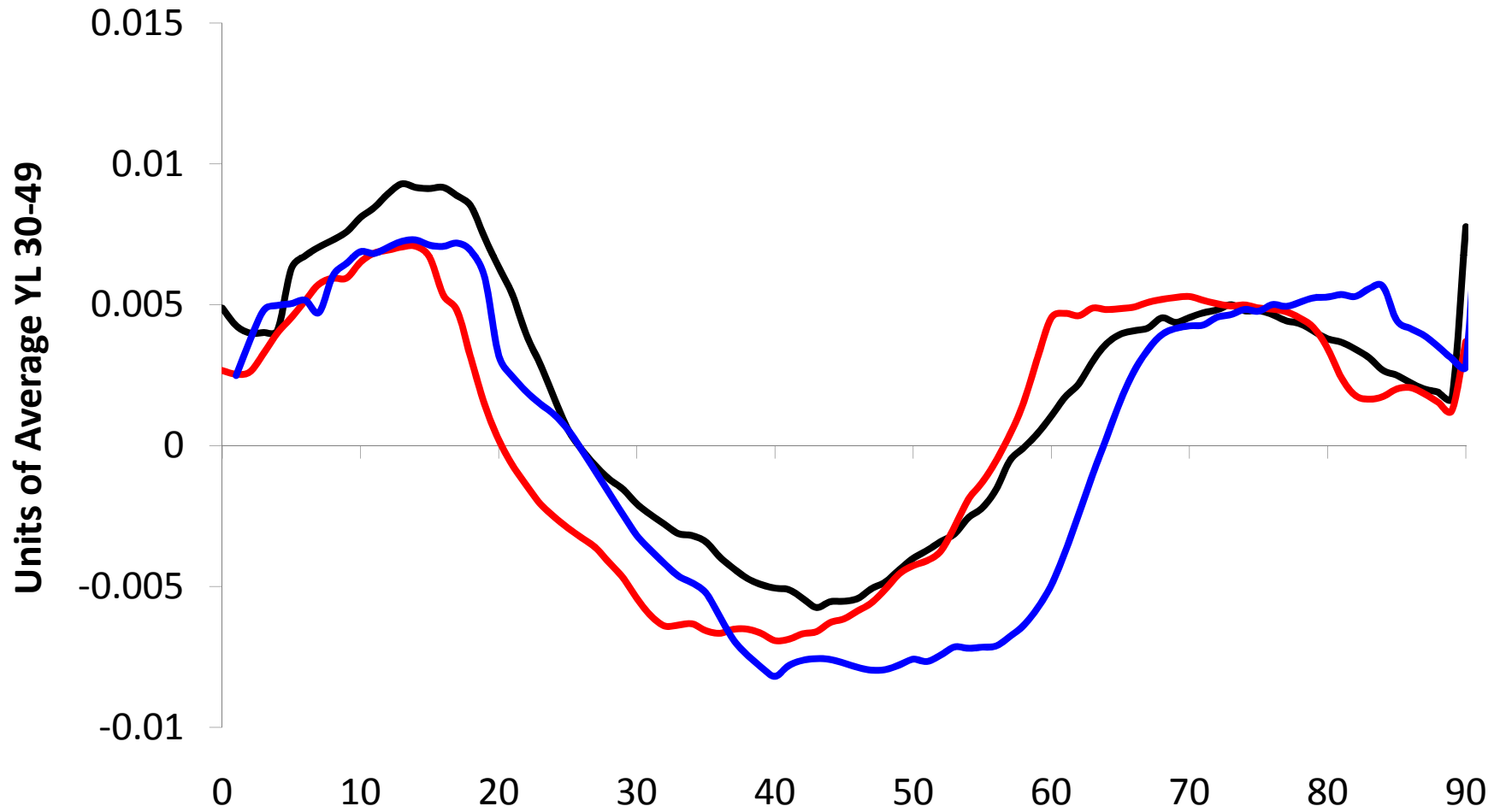
# POPULATION AGE DISTRIBUTION

(Red - Austria 2000; Black - US 2003; Blue - Sweden 2003)



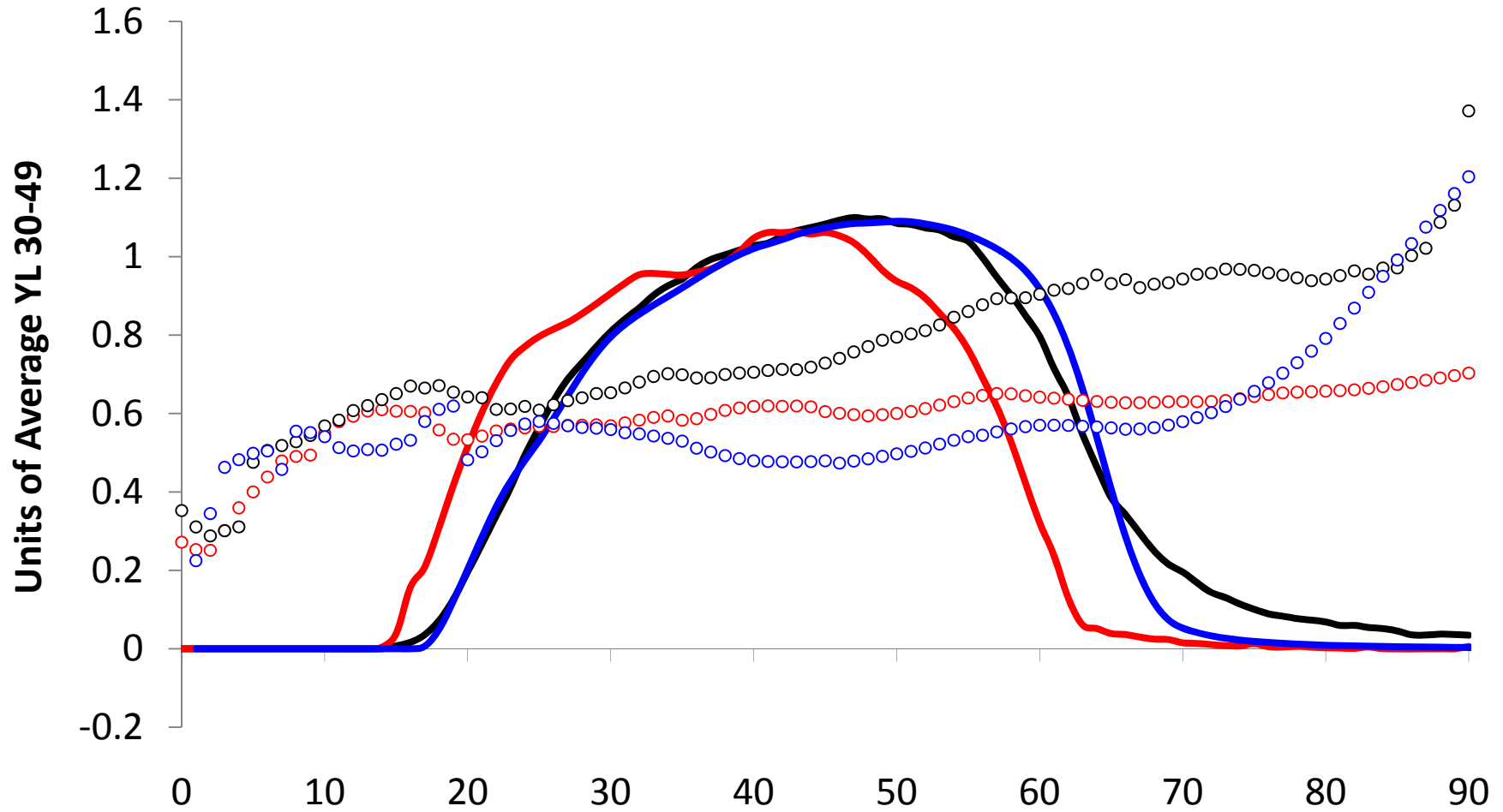
# LCD - POPULATION WEIGHTED

(Red - Austria 2000; Black - US 2003; Blue - Sweden 2003)



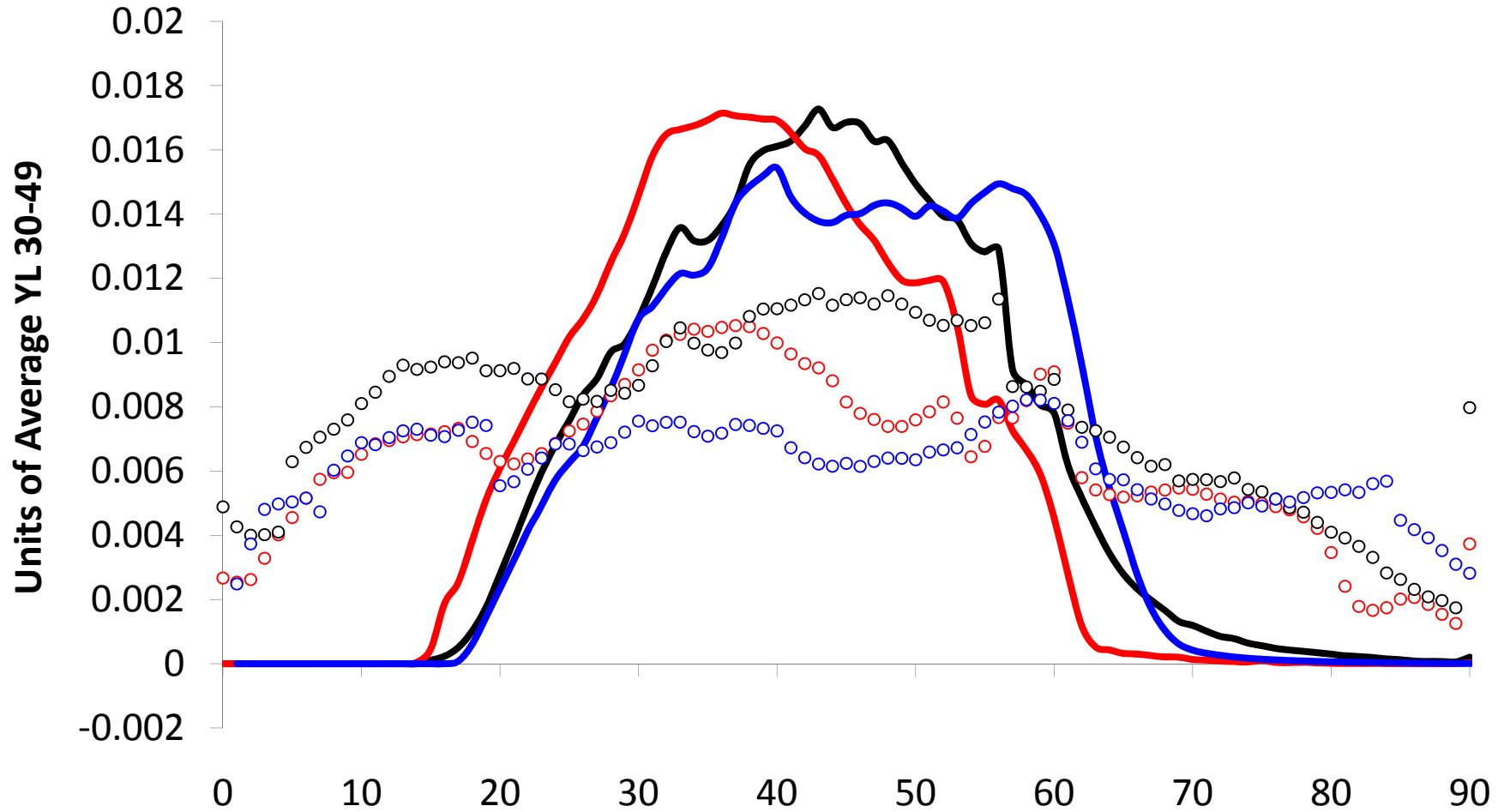
# Labor Income and Consumption

(Red - Austria 2000; Black - US 2003; Blue - Sweden 2003)

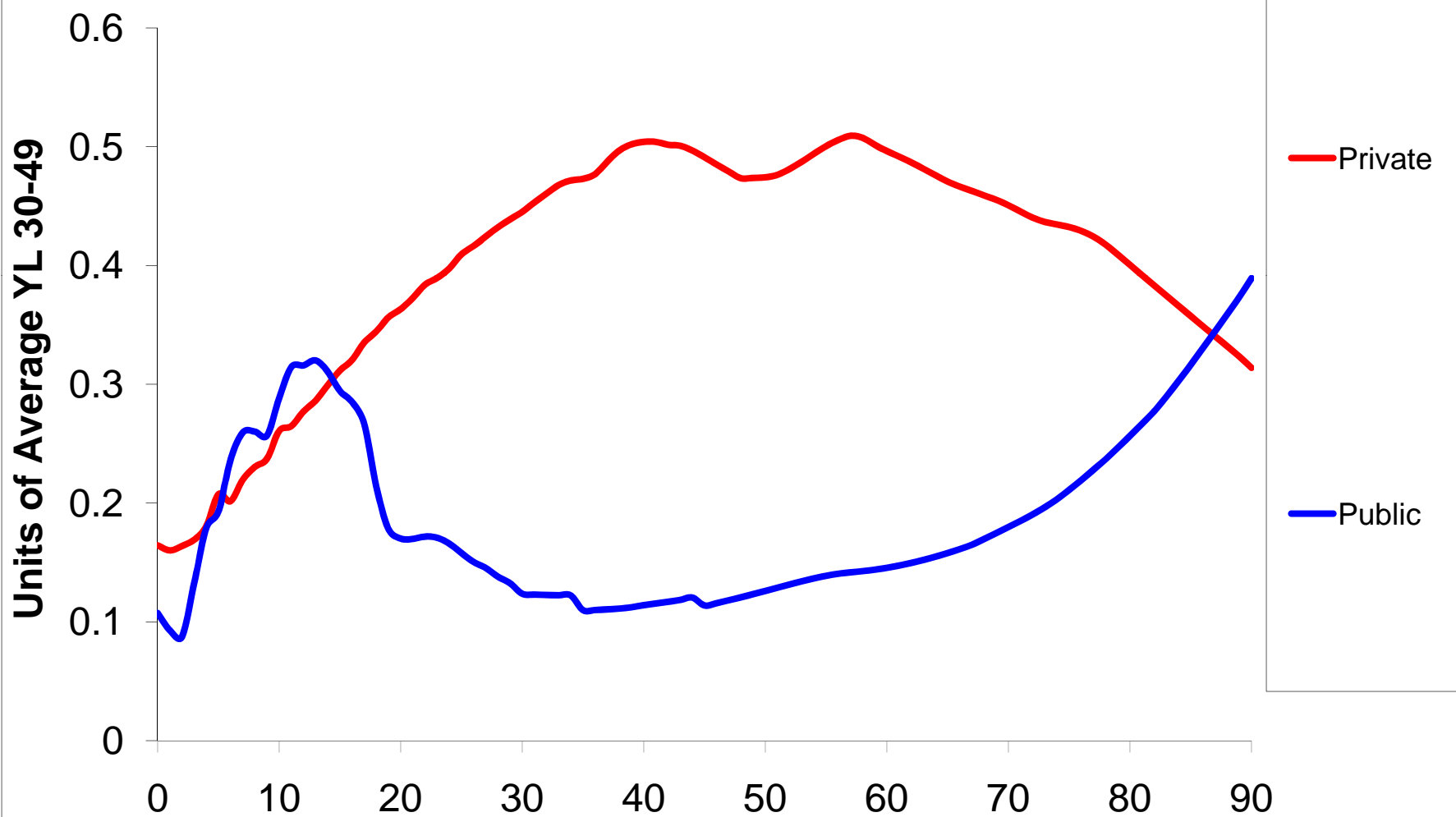


# YL & C - POPULATION WEIGHTED

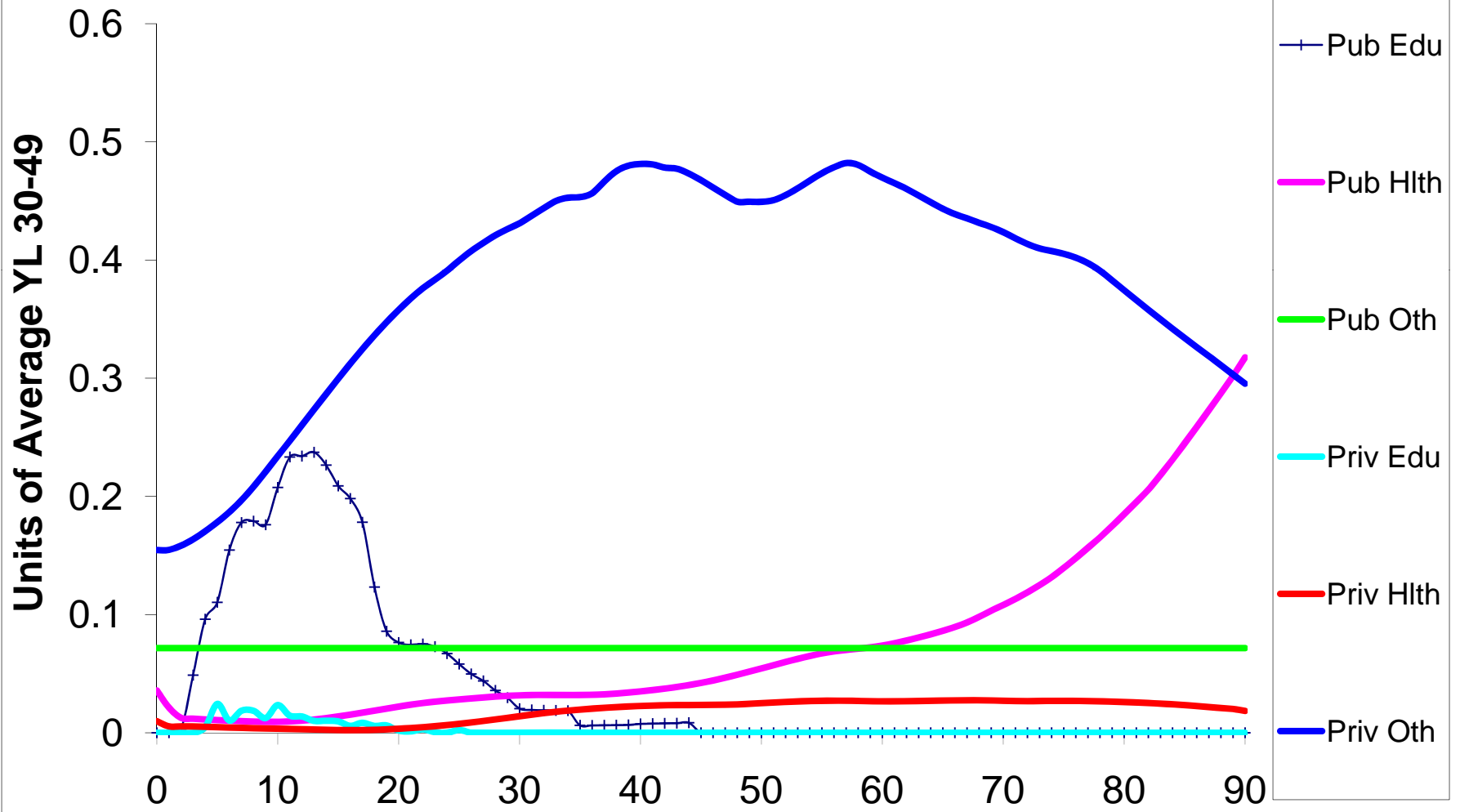
(Red - Austria 2000; Black - US 2003; Blue - Sweden 2003)



# C - Public and Private

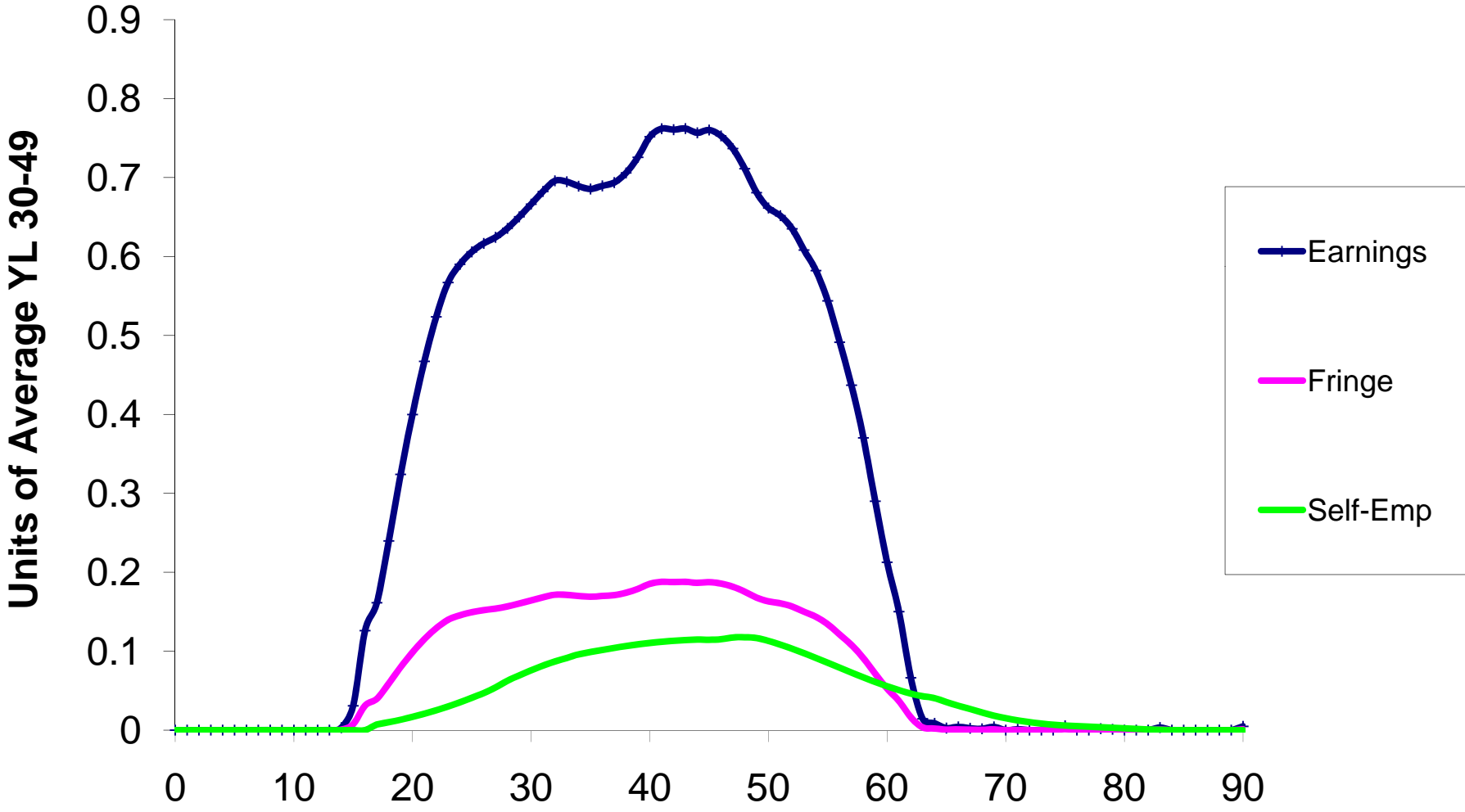


# C Components





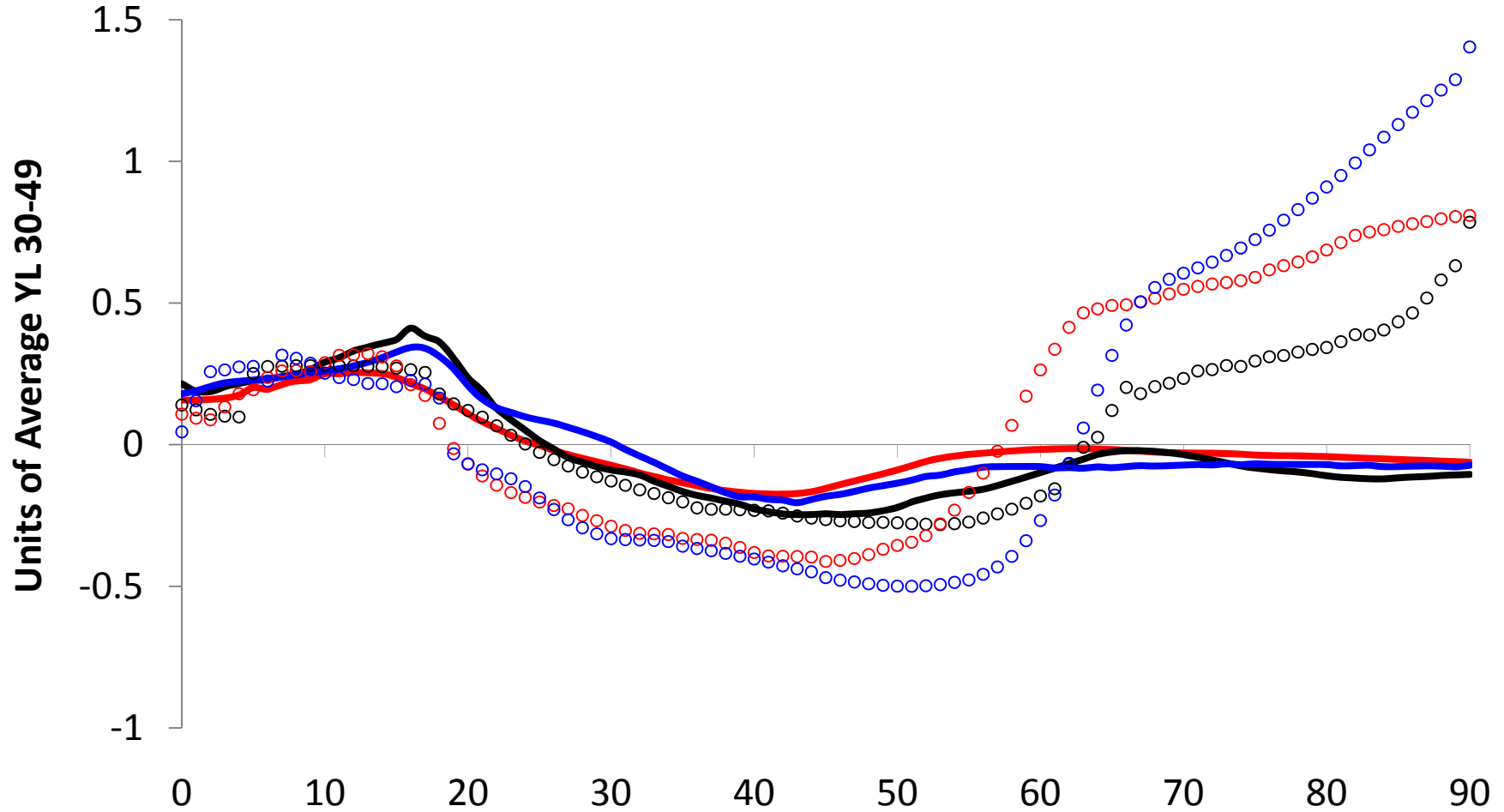
# YL Components



# Transfers

(Red - Austria; Black - US; Blue - Sweden)

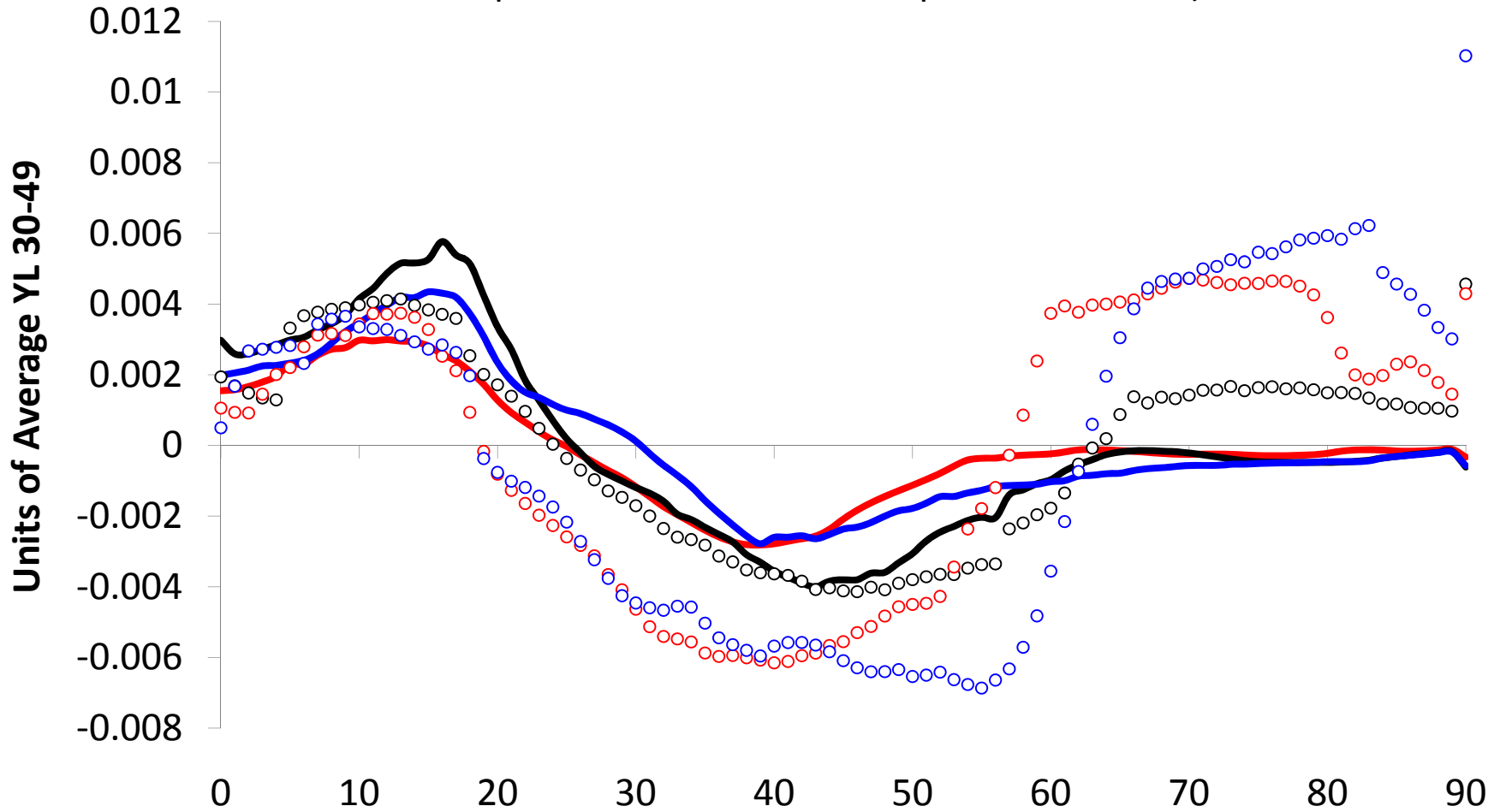
Circles are public transfers, lines are private transfers



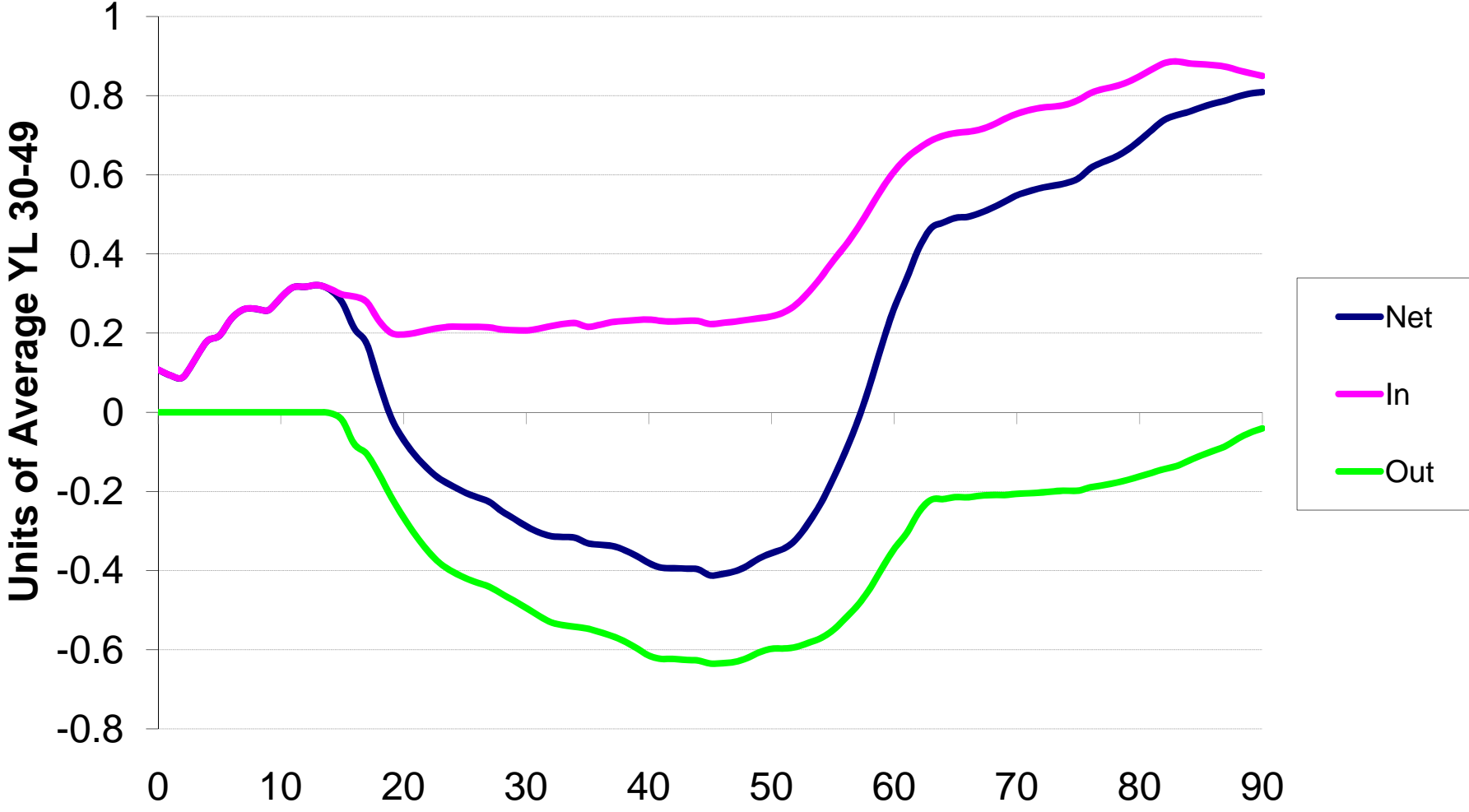
# Transfers - POPULATION WEIGHTED

(Red - Austria; Black - US; Blue - Sweden)

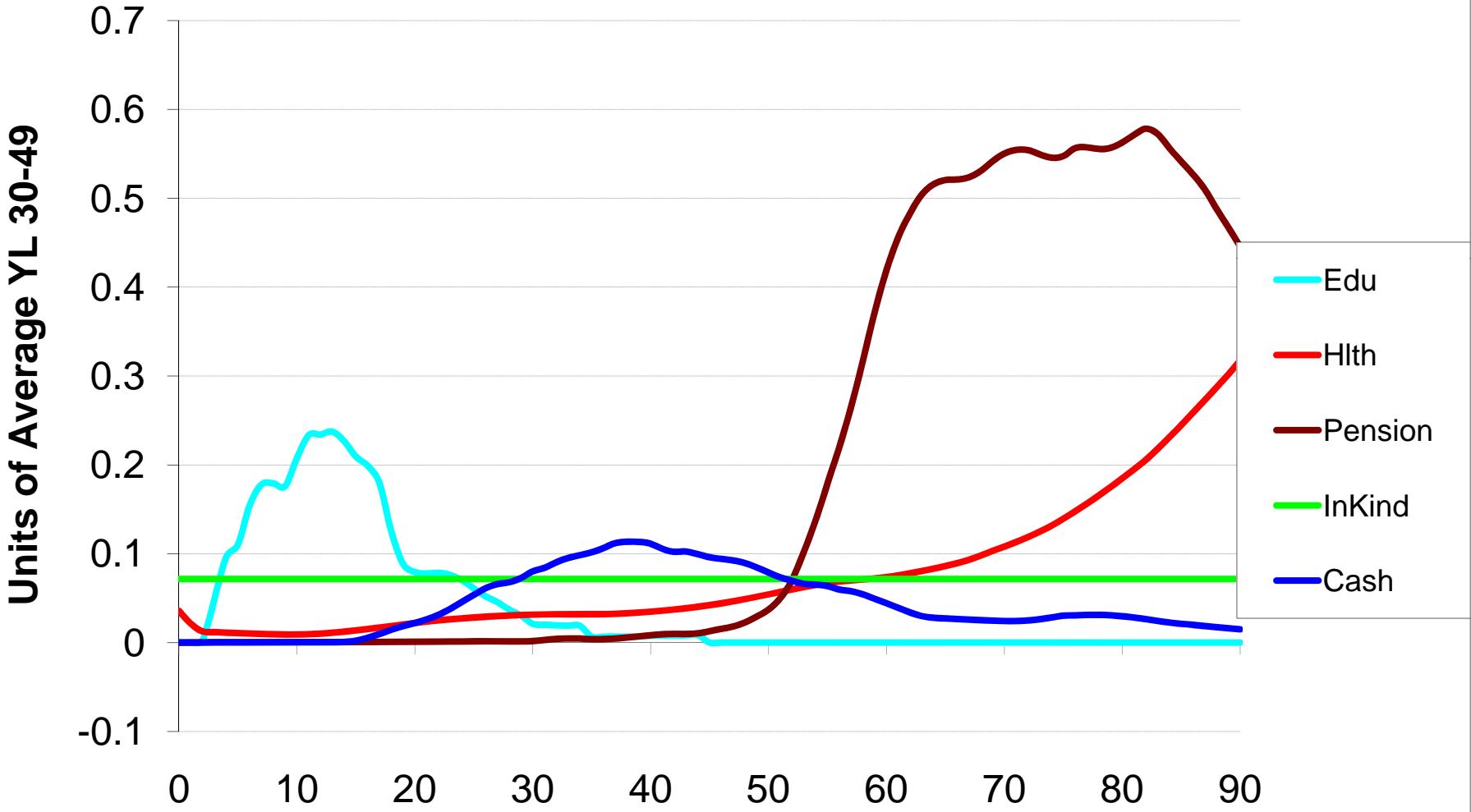
Circles are public transfers, lines are private transfers



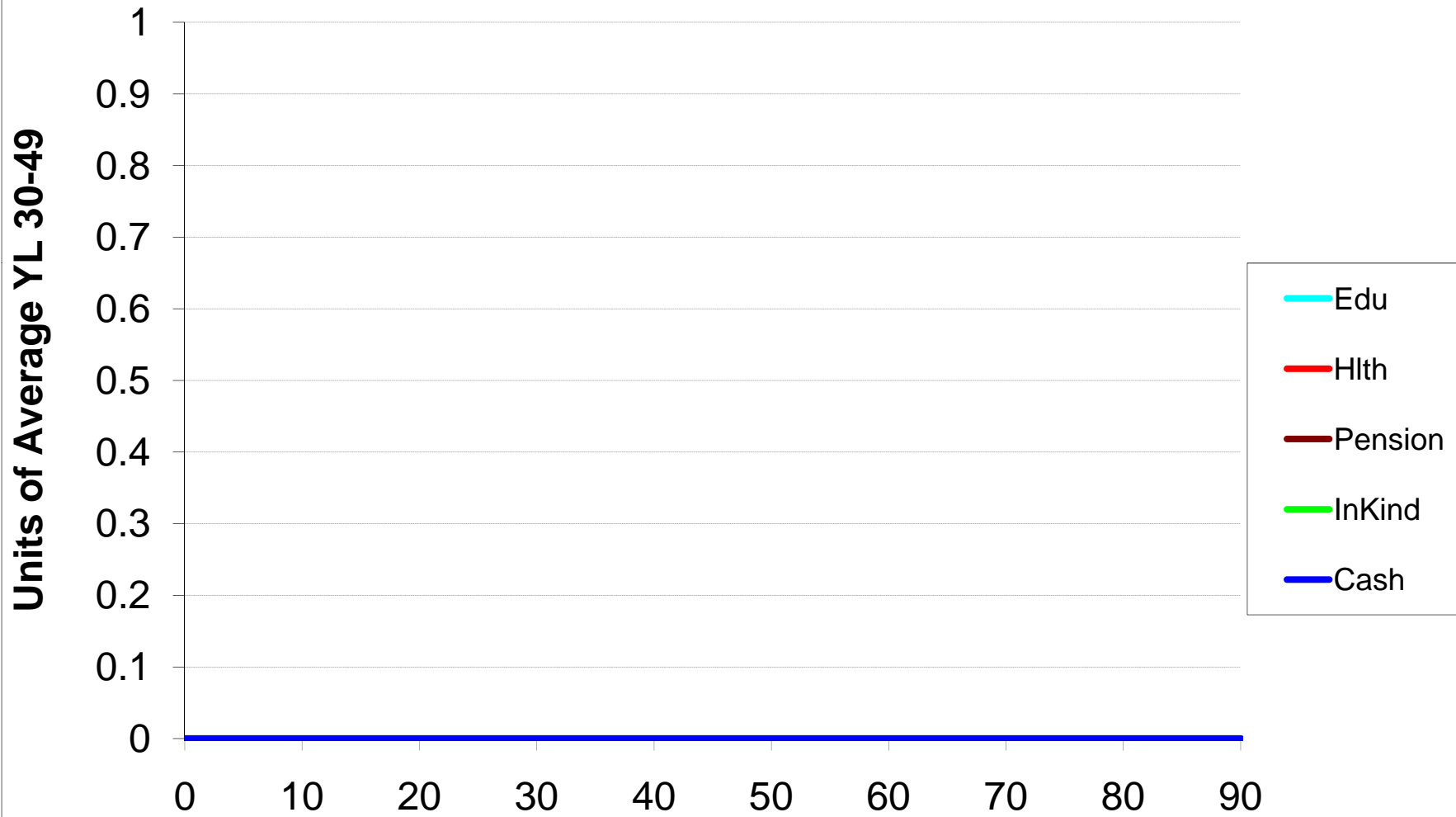
# Public Transfers



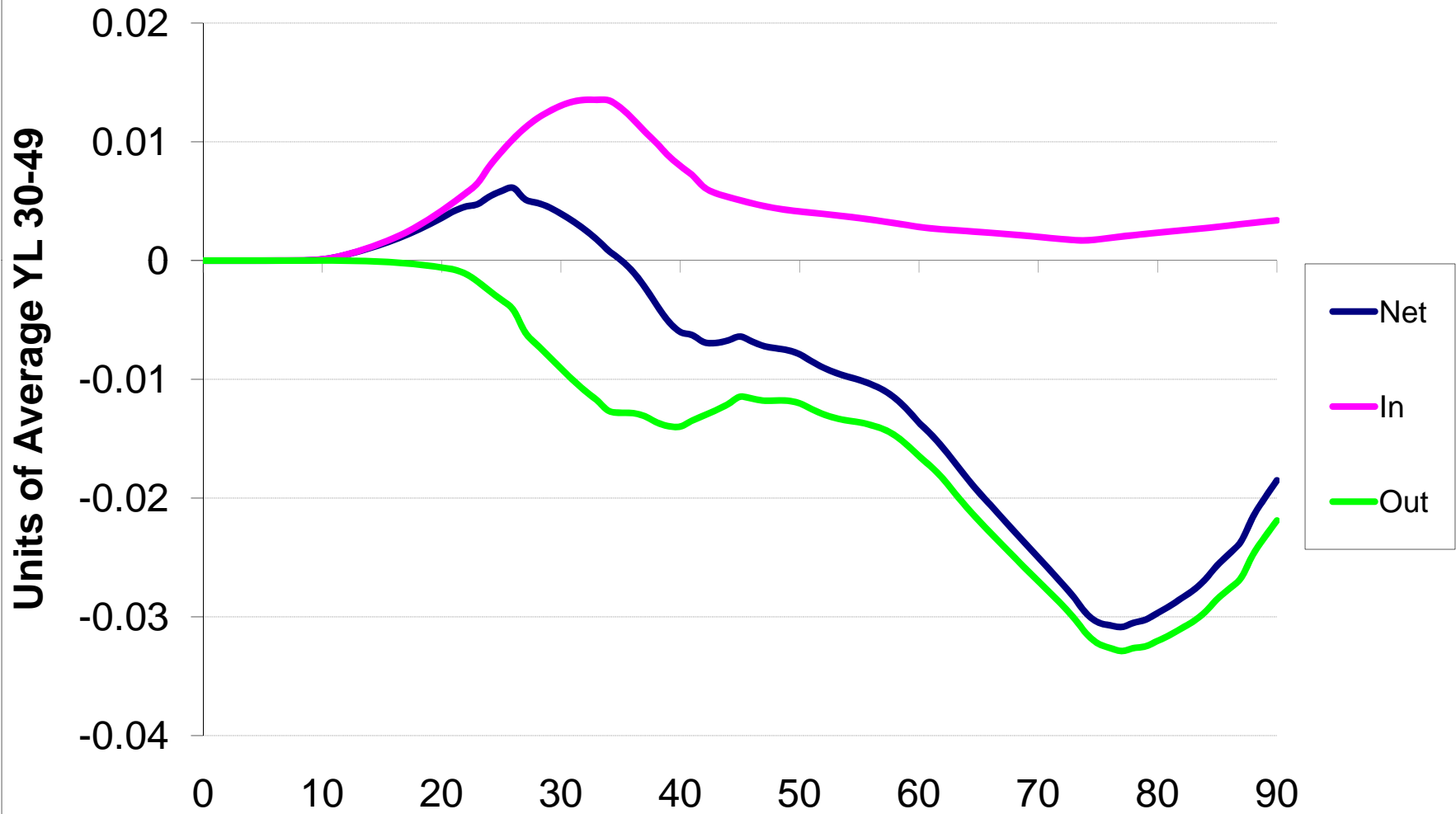
# Public Transfer Inflows Components



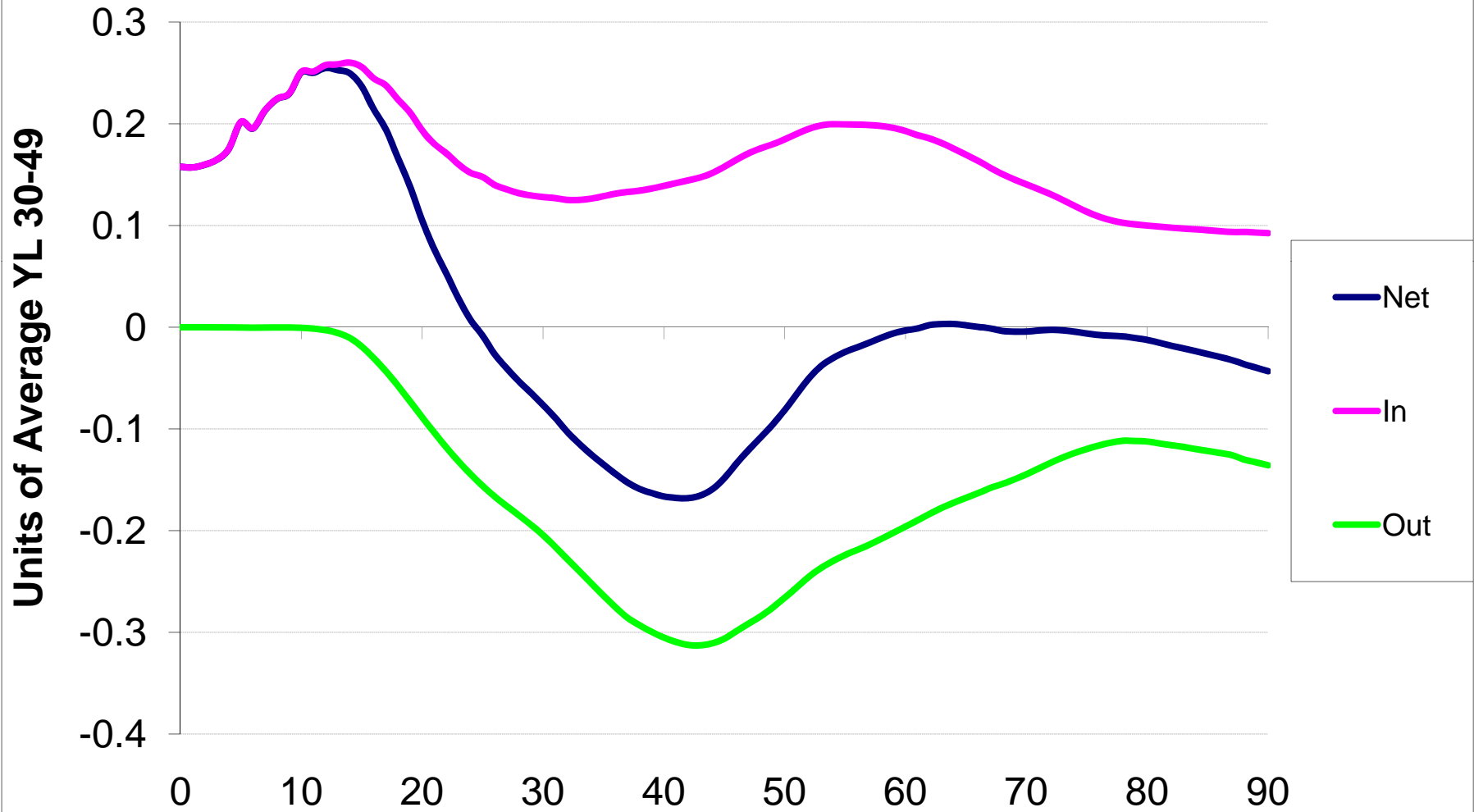
# Public Transfer Outflow Components



# Private Interhousehold Transfers

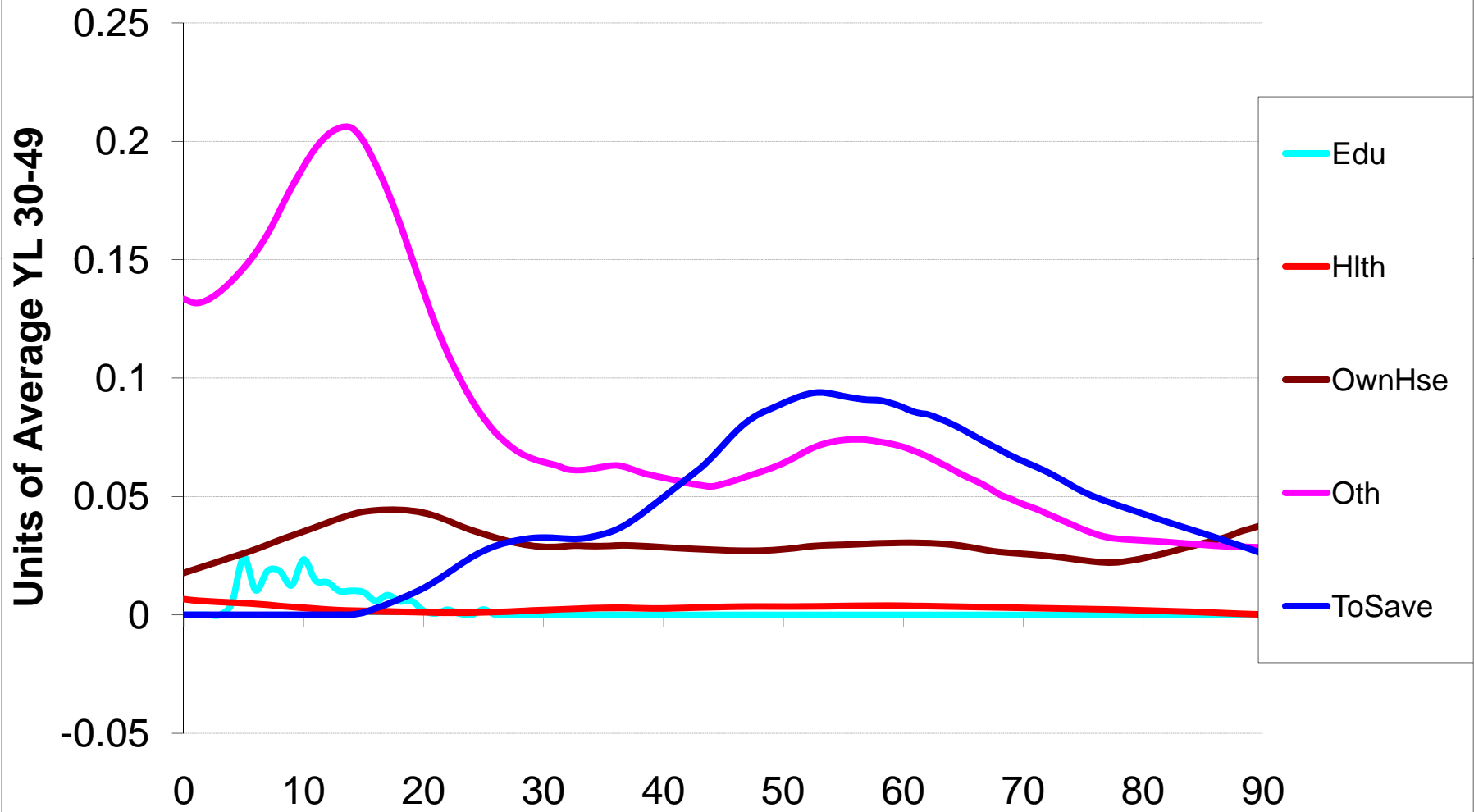


# Private Intrahousehold Transfers

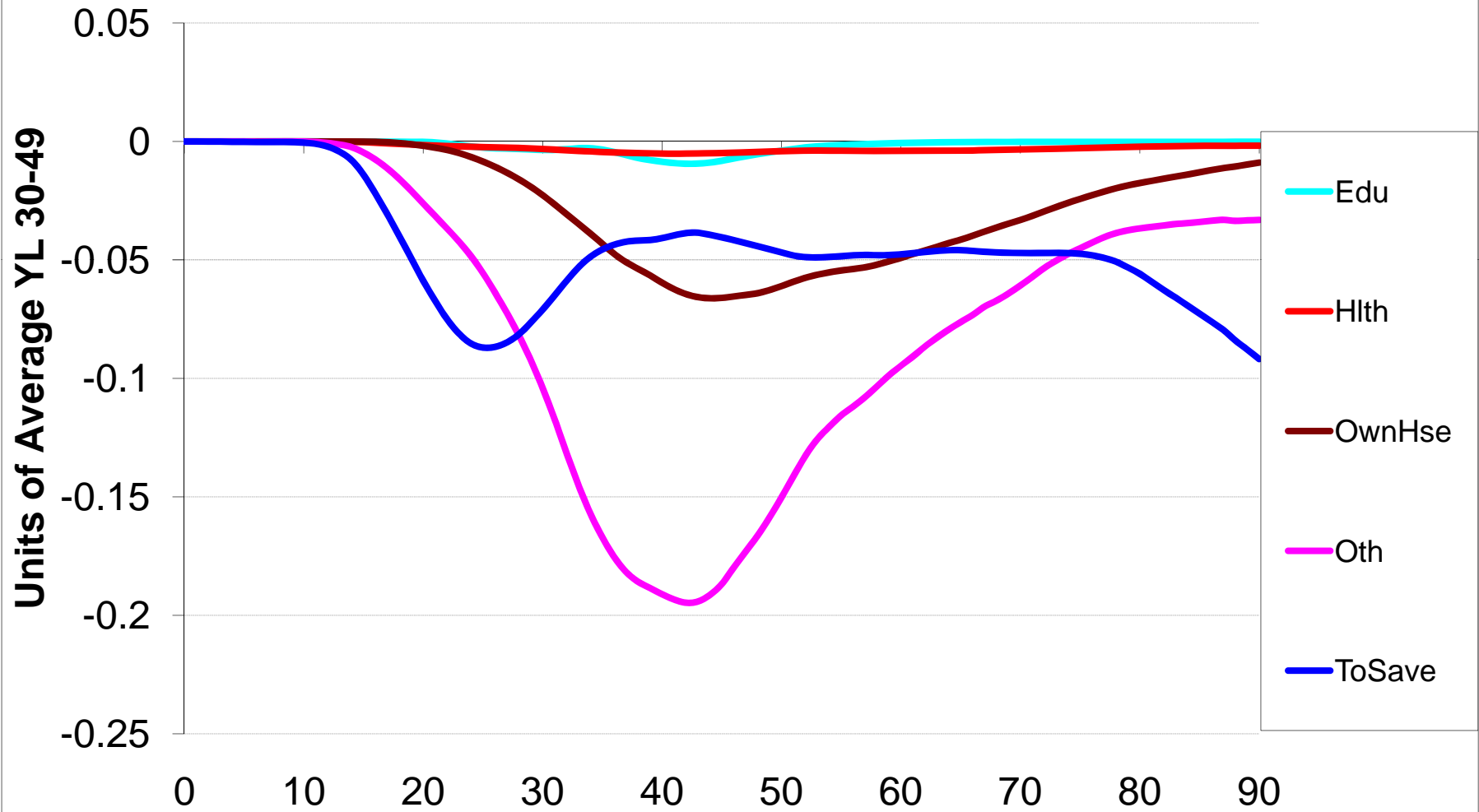




# Private Intrahousehold Inflows

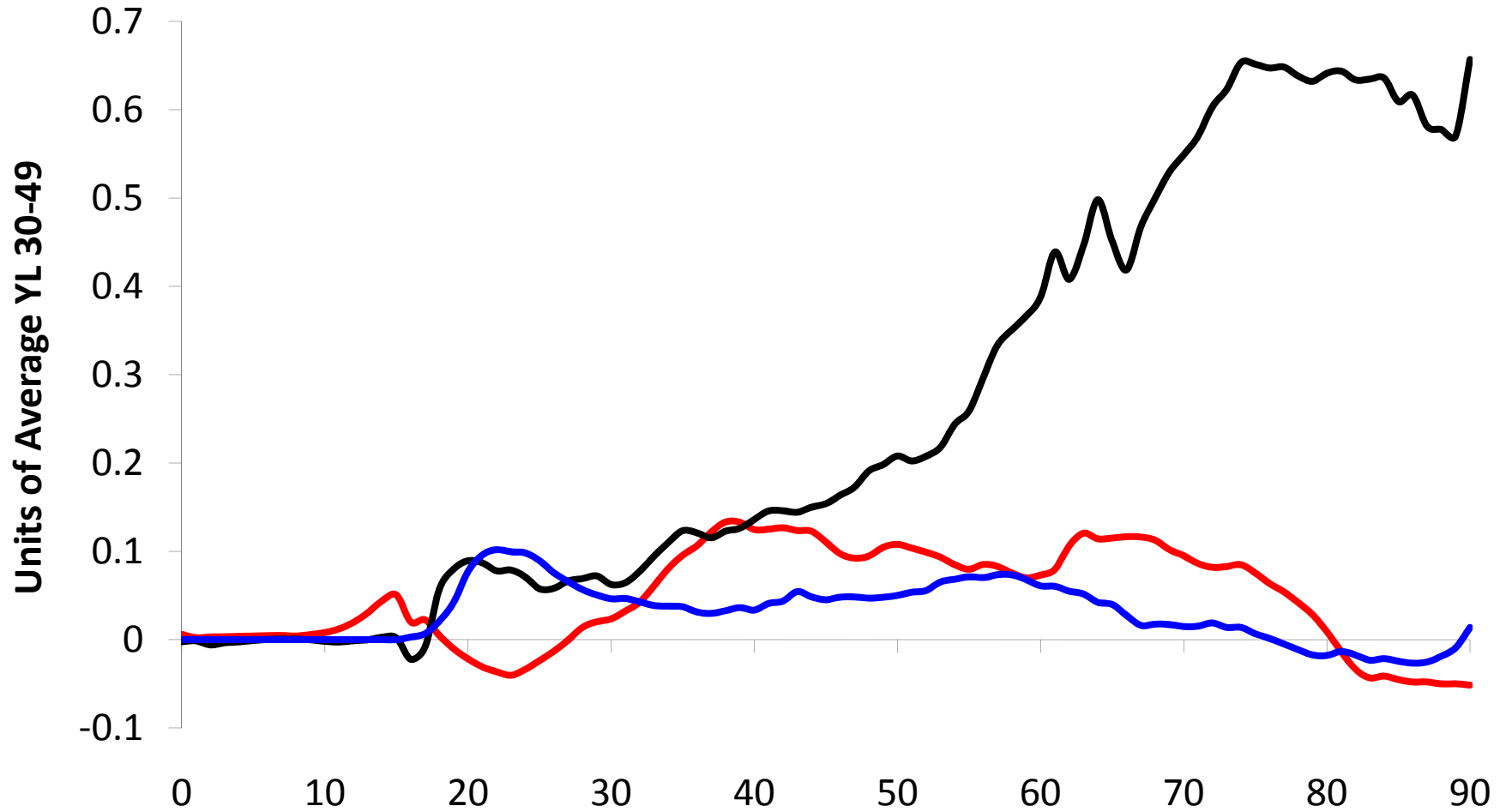


# Private Intrahousehold Outflows

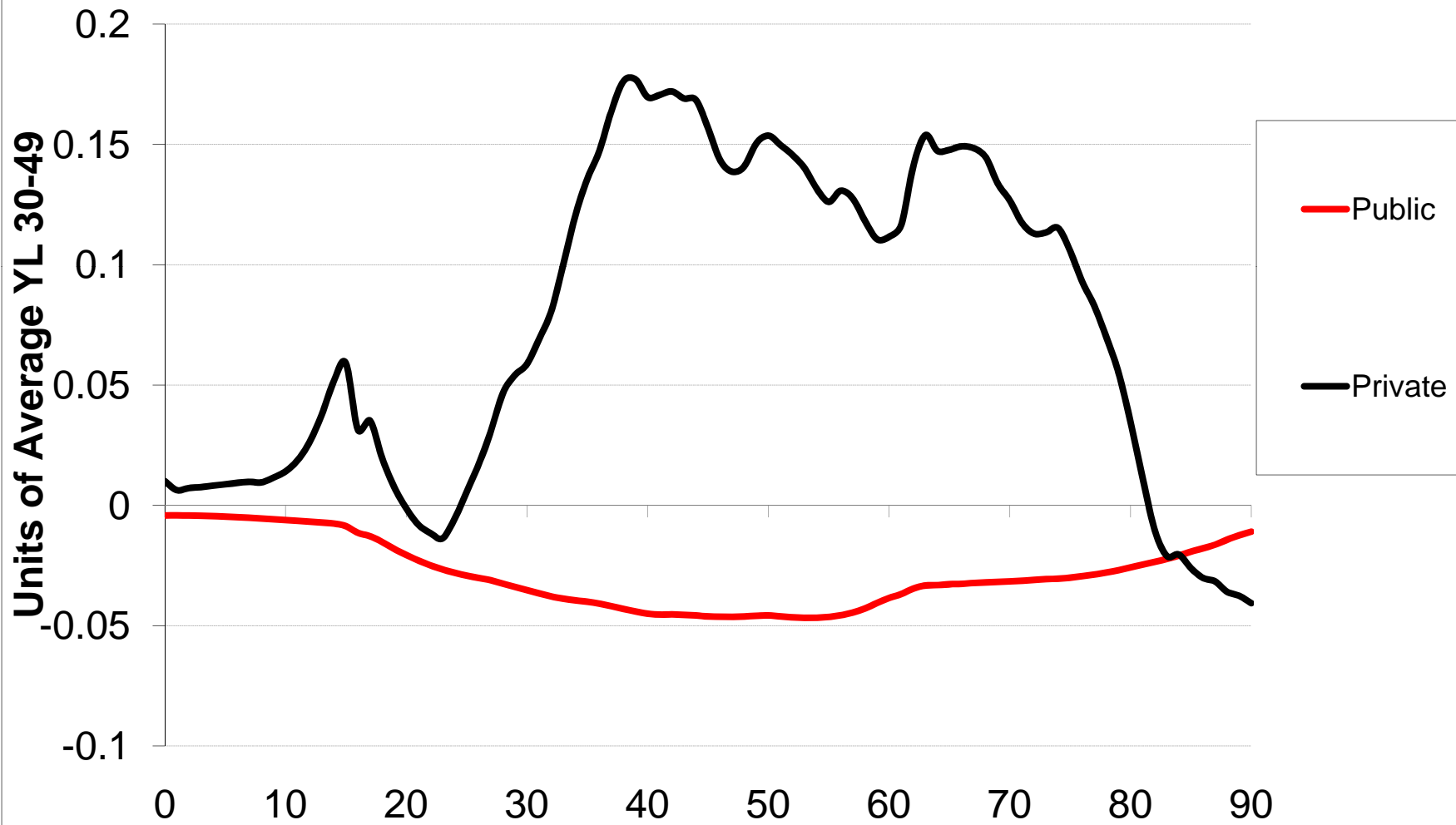


# Asset-Based Reallocations

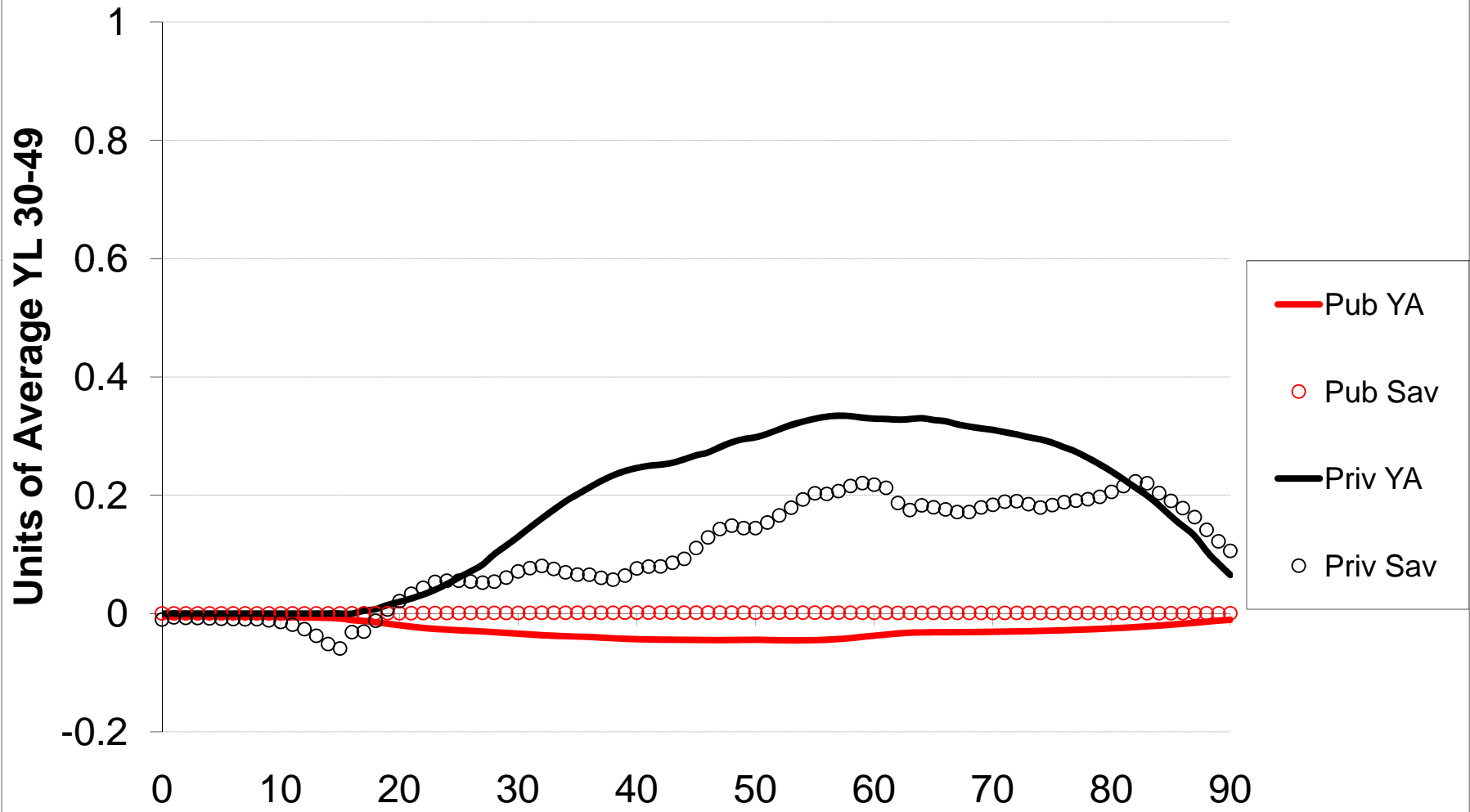
(Red - Austria; Black - US; Blue - Sweden)



# Asset-Based Reallocations, Public and Private

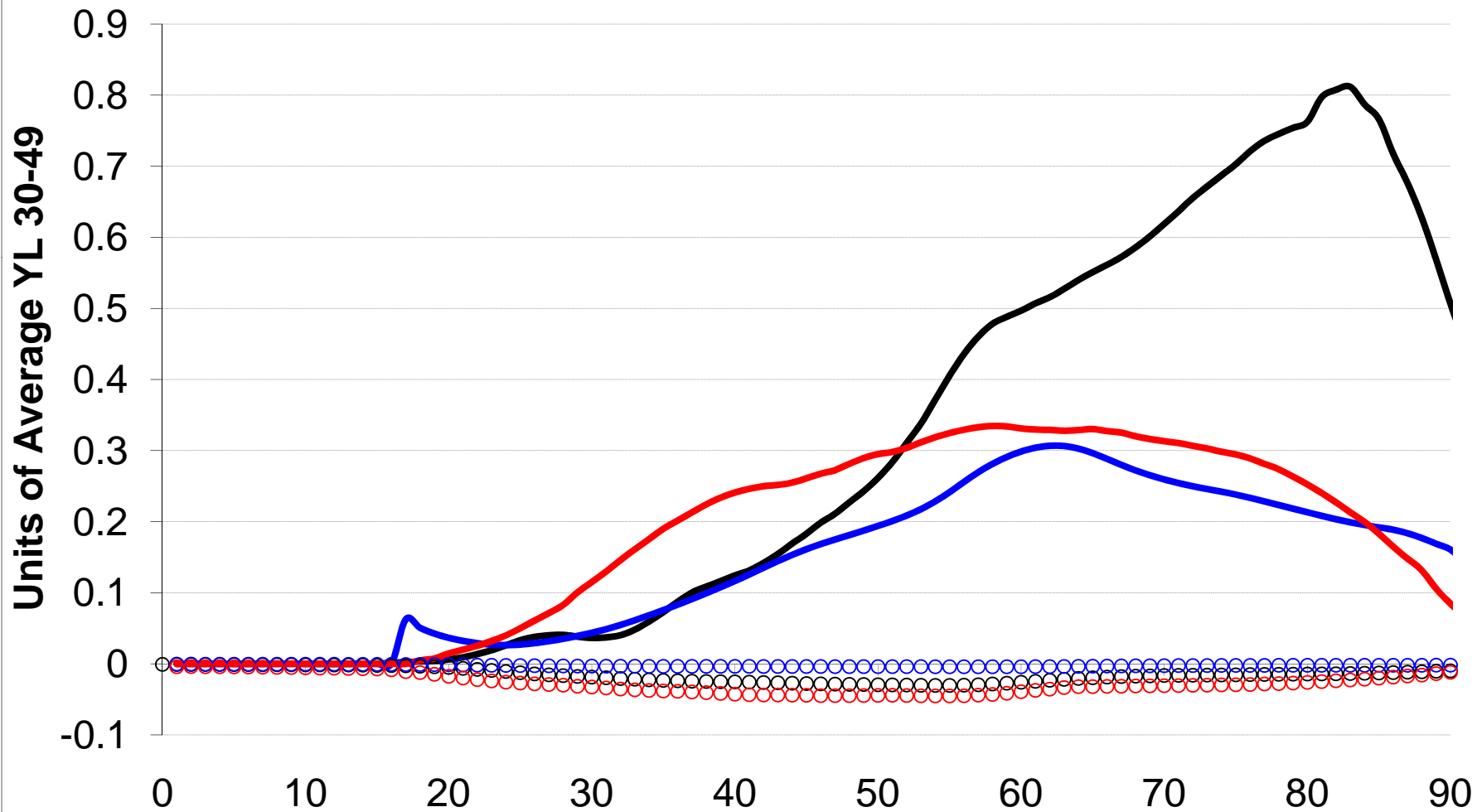


# Asset-Based Reallocations, Asset Income & Saving



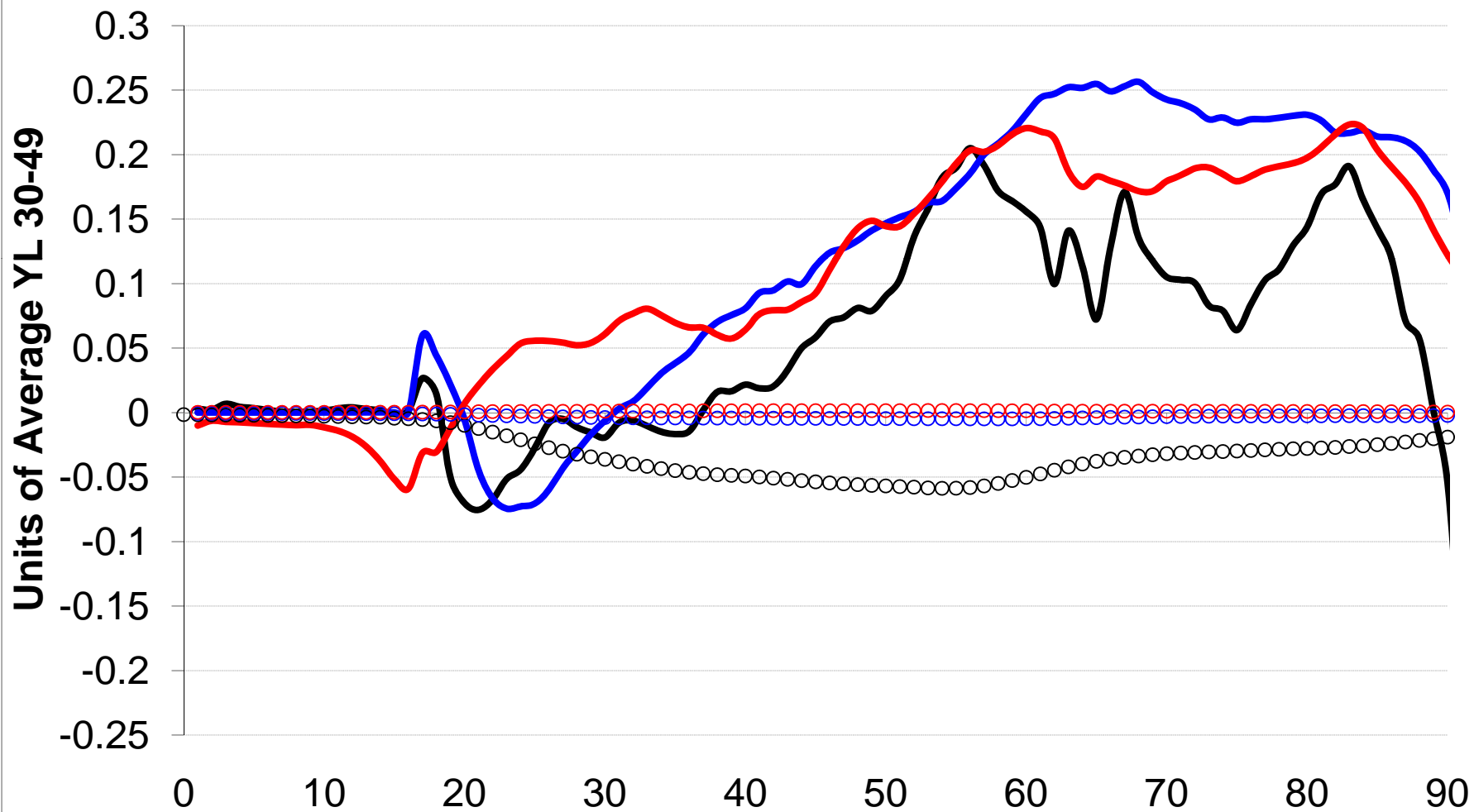
# Comparative Asset Income

(Lines Private, Circles Public; Red - AT, Black - US, Blue - SE)

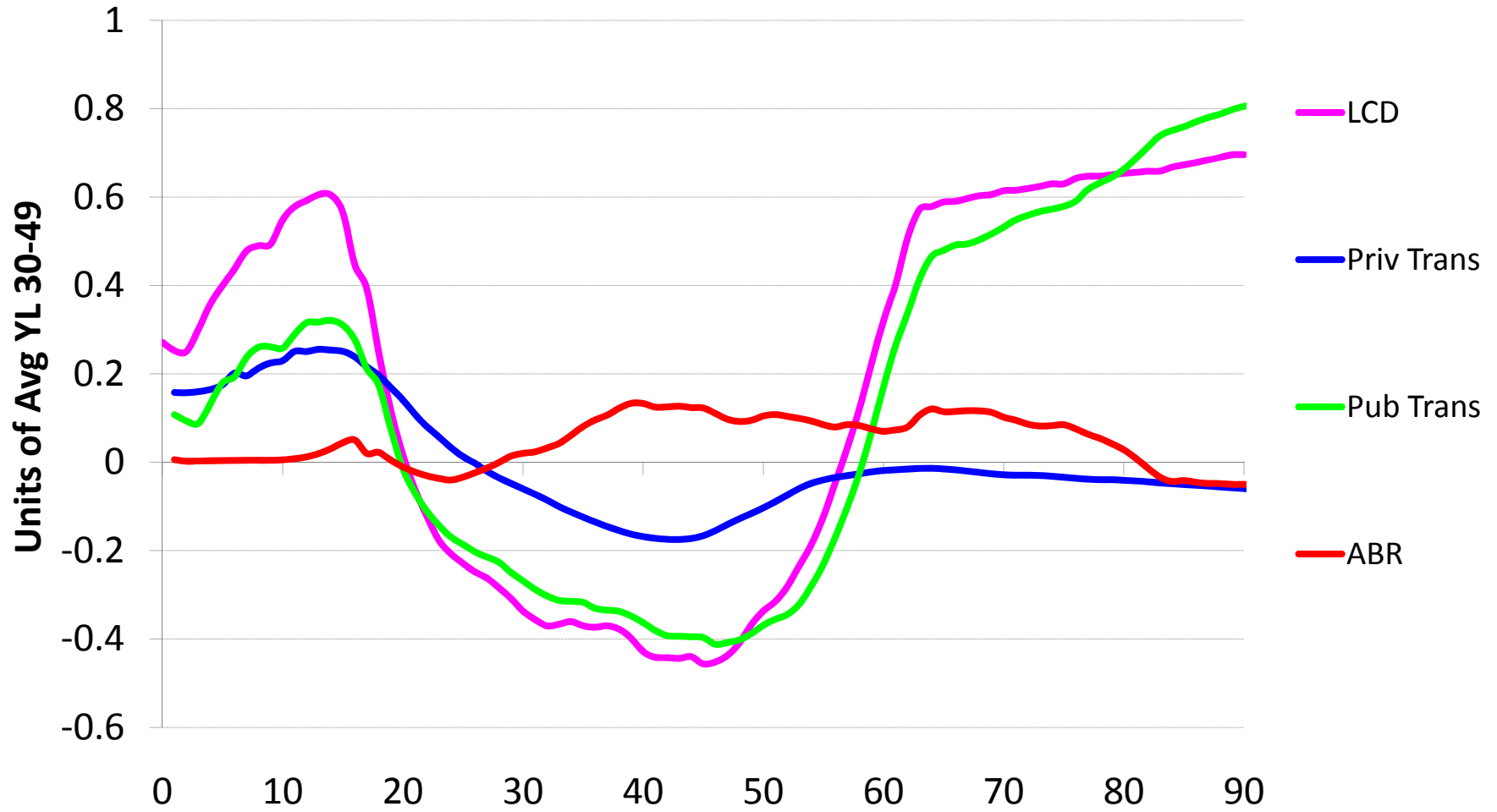


# Comparative Saving

(Lines Private, Circles Public; Red - AT, Black - US, Blue - SE)



# Financing the Lifecycle Deficit





# Financing the Lifecycle Deficit Components at Each Age

